

STATE OF KANSAS
KANSAS CORPORATION COMMISSION
CONSERVATION DIVISION
130 South Market - Room 2078
Wichita, Kansas 67202

FORM CP-1 (3/92)

WELL PLUGGING APPLICATION FORM
(PLEASE TYPE FORM and File ONE Copy)

API # 015-007-22453-01-01 (Identifier number of this well). This must be listed for wells drilled since 1967; if no API# was issued, indicate spud or completion date. 8/01

WELL OPERATOR ONEOK Resources Company KCC LICENSE # 4548
(owner/company name) (operator's)

ADDRESS PO Box 871 CITY TULSA

STATE Oklahoma ZIP CODE 74102-0871 CONTACT PHONE # (918) 588-7711

LEASE Gordon A WELL# 1-2 SEC. 2 T. 34S R. 14 (East/West)

NW - SW - NW SPOT LOCATION/ COUNTY Barber

1700 FEET (in exact footage) FROM S (N) (circle one) LINE OF SECTION (NOT Lease Line)

380 FEET (in exact footage) FROM E (W) (circle one) LINE OF SECTION (NOT Lease Line)

Check One: OIL WELL X GAS WELL D&A SWD/ENHR WELL DOCKET#

CONDUCTOR CASING SIZE 20 SET AT 50 CEMENTED WITH SACKS

SURFACE CASING SIZE 8-5/8 SET AT 463 CEMENTED WITH 315 SACKS

PRODUCTION CASING SIZE 5-1/2 SET AT 5299 CEMENTED WITH 440 SACKS

LIST (ALL) PERFORATIONS and BRIDGEPLUG SETS: SEE ATTACHED

ELEVATION 1714 / 1723 T.D. 5300 PBTD 3500 ANHYDRITE DEPTH 690
(G.L./K.B.) (Stone Corrosion Prevention)

CONDITION OF WELL: GOOD X POOR CASING LEAK JUNK IN HOLE

PROPOSED METHOD OF PLUGGING Casing will be shot off at about 3000 and pulled out. Hole will be filled and cement will be set across the bottom of the surface and at Surface.

(If additional space is needed attach separate page)

IS WELL LOG ATTACHED TO THIS APPLICATION AS REQUIRED? Y IS ACO-1 FILED? Y

If not explain why?

PLUGGING OF THIS WELL WILL BE DONE IN ACCORDANCE WITH K.S.A. 55-101 et. seq. AND THE RULES AND REGULATIONS OF THE STATE CORPORATION COMMISSION.

LIST NAME OF COMPANY REPRESENTATIVE AUTHORIZED TO BE IN CHARGE OF PLUGGING OPERATIONS:

Dennis Hertel PHONE# (316) 672-9388

ADDRESS 4033 N Highway 281 City/State Pratt, KS

PLUGGING CONTRACTOR Clarke Corporation KCC LICENSE # 5125
(company name) (contractor's)

ADDRESS 107 W. Folster, Medicine Lodge, KS, 67044 PHONE # ()

PROPOSED DATE AND HOUR OF PLUGGING (If Known?) 9-11-01 @ 3:35 pm plugged

PAYMENT OF THE PLUGGING FEE (K.A.R. 82-3-118) WILL BE GUARANTEED BY OPERATOR OR AGENT

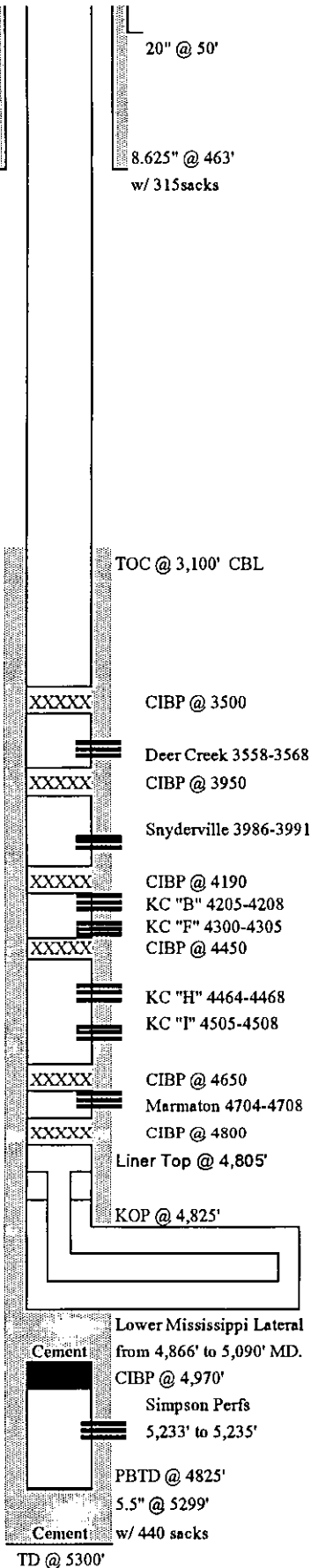
DATE: 06/08/01 AUTHORIZED OPERATOR/AGENT: Day R. [Signature]
(signature)

Formation	Top Perf	Bottom Perf
CIBP	3,500'	
Deer Creek	3,558'	3,568'
CIBP	3,950'	
Snyderville	3,986'	3,991'
CIBP	4,190'	
Kansas City B	4,205'	4,208'
Kansas City F	4,300'	4,305'
CIBP	4,450'	
Kansas City H	4,464'	4,468'
Kansas City I	4,505'	4,508'
CIBP	4,650'	
Marmaton	4,704'	4,708'
CIBP	4,800'	
Mississippi	4,866'	4,805'
CIBP	4,970'	
Simpson	5,233'	5,235'

RECEIVED
KANSAS CORPORATION COMMISSION
JUN 18 2001
CONSERVATION DIVISION

ONEOK RESOURCES

Well Name: Gordon "A" #1-2		Field: Actna		API#: 15-007-22453		AFE#:						
State: Kansas		County: Barber		Location: 1,700' FNL & 380' FWL - Sec. 2 - T34S - R14W								
Property Number: 05567		Spud Date: 9/20/94		Formation: Deer Creek								
ID: 5,300'		PBTD: 4,825'		Elevation: 1,723' KB		Zero Datum: 9 Ft. Above GL						
Pipe Record								Cement & Hole Data				
Csg	OD	Grade	THD	Wt/Ft	Top	Btm	# Jts	Bit	Depth	Sacks	Wt.	TopCmt
Conductor	20				0'	50'		24	50'	0		Surface
Surface	8 5/8	K55	STC	24.00#	0'	463'		12 1/4	463'	315		Surface
Production	5 1/2	K55	STC	14.00#	0'	5,299'		7 7/8	5,300'	440		3,100' CBI
Liner	2 3/8	J55			4,805'	5,090'			4,970'	55	Plug	4,866'
Liner Pre-perforated with 4 - 1/2" holes per foot.												
Remarks: Drill Stem Tested Upper Mississippi from 4,795 ft. to 4,830 ft. Drill Stem Tested Lower Mississippi from 4,840 ft. to 4,885 ft. 10/95 Perforated & Tested Simpson Sand from 5,233 ft. to 5,235 ft. 11/95 Set CIBP @ 4,970 ft. Milled casing window from 4,820 ft. to 4,846 ft. 12/95 Drilled Laterally through Lower Mississippi from 4,866 ft. to 5,090 ft. Ran pre-perforated liner across lateral open hole section. Pump tested 3 BOPD & 3 BWPD. 1/96 Stimulated Mississippi with 6,000 gal. 28% NE acid in three 2,000 gal. stages. 2/96 Pump tested 5 BOPD & 8 BWPD. 5/96 Pump tested 2 BOPD & 2 BWPD. 4/99 Temporarily Abandoned Well. 5/01 Test Marmaton 4704-4708. Set CIBP 4800'. Az'd & Swab dry. Set CIBP 4650. Test KC "T" zone 4505-4508 and "H" zone 4464-4468. Az each separately. Swab dry. Set CIBP 4450. Test KC "F" 4300-4305 and KC "B" 4205-4208. Az each separately. Swab dry. Set CIBP 4190. Test Deer Creek 3558-3568. Az and swab 23 BWPH. Test Snyderville 3986-3991. BD and swab dry. Will set CIBP's at 3950 and 3500 Original Operator: OXY USA, Inc. WI%: 100.000% NRI%: 81.000%												
								Capacities: (Bbl/Ft)				
								Tbg: .00387				
								Csg: .0244				
								Csg:				
								Csg:				
								Liner:				
								Volume Between: (Bbl/Ft)				
								Tbg x Csg: .0189				
								Tbg x Csg:				
								Tbg x Csg:				
								Tbg x Liner:				
								Csg x OH:				
								Liner x OH:				
Perforation Record												
		Date	Top	Btm	Status							
		10/25/95	5,233'	5,235'	Below Cement Plug							
		12/1/95	4,866'	4,805'	TA'd Pay Zone							
		5/22/2001	4,704'	4,708'	Swb dry, PB							
		5/25/2001	4,505'	4,508'	Swb dry, PB							
		5/25/2001	4,464'	4,468'	Swb dry, PB							
		5/31/2001	4,300'	4,305'	Swb dry, PB							
		5/31/2001	4,205'	4,208'	Swb dry, PB							
WHSIP:		BHP:										
Logs: CNL-LDT, DIFL, Micro, GR, SP, PE, & CBL/CLL/GR.												
Landman: Jim Leonard				Engineer: Daryl Duvall				Geologist: Bill Keller				



Status: Temporarily Abandoned
Objective:

RECEIVED
 KANSAS CORPORATION COMMISSION

JUN 18 2001

TUBULAR GOODS PERFORMANCE

Material	Tensile*	Burst*	Collapse*	ID CONSERVATION DIVISION	
	(lbs)	(lbs)	(lbs)	(in)	(in)
20" Non API Conductor Pipe					
8.625" 24# K55 STC	263,000	2,950	1,370	8.097	7.972
5.5" 14# K55 STC	189,000	4,270	3,120	5.012	4.887

* Safety Factor Not Included

Prepared By: Ed Chesny-Consulting Engineer **Office:** (918) 588-7787
Date: 4/10/01 **Home:**
Updated: 6/8/01

Fax: (918) 588-7773
Fax:

MCGINNESS & MCGINNESS
CONSULTING GEOLOGISTS
1026 UNION CENTER BLDG.
WICHITA, KANSAS 67202
(316) 267-6065

October 3, 1994

Mr. Tim Voss
OXY USA, Inc.
110 South Main, Suite 800
Wichita, Kansas 67202

WELL FILE

RE: OXY USA, Inc.
#1-A Gordon
Approx. NW SW NW
Section 2-34S-14W
Barber County, Kansas

GEOLOGICAL REPORT

Operator: OXY USA, Inc.
Contractor: Duke Drilling Company - Rig #5
Commencement: September 20, 1994
Completion: October 1, 1994
Conductor Casing: 20" set at 40' with RD Ratholer
Surface Casing: 8-5/8" set at 463' with 315 sxs
Production Casing: 5-1/2" set at 5299' with 440 sxs
Elevations: 1714' GL, 1723' KB
Total Depth: 5300' RTD, 5299' LTD
DSTs: 2 - Western Testing
Well Logs: ATLAS - Dual Ind. w/GR & SP, COMP Neutron-Litho
w/GR & Caliper, Microlog & CIBL
Reference Well: OXY USA, #1 Sooter, SW SE NE of 2-34S-14W,
Barber County, Kansas

RECEIVED
KANSAS CORPORATION COMMISSION

JUN 18 2001

CONSERVATION DIVISION

All tops and zones of porosity with staining were measured from rotary bushing, 1723' R.B. elevation. A Payne portable gas detector unit was in service from 3350' to RTD. The samples were delivered to the Kansas Geological Survey Library in Wichita, Kansas. Drilling was geologically supervised from 3500' to RTD. There was a noticeable stretch to the electric log when compared to the drilling time log.

FORMATION TOPS

<u>Formation</u>	<u>El Log (Datum)</u>	<u>Sample (Datum)</u>	<u>S.C.</u>
Heebner	3980 (-2257)	3969 (-2246)	-1'
Lansing/Kansas City	4159 (-2436)	4163 (-2440)	+2'
Kansas City	4405 (-2682)	4414 (-2691)	+8'
Base/Kansas City	4643 (-2920)	4648 (-2925)	+7'
Mississippi	4731 (-3008)	4728 (-3005)	-4'
Kinderhook	5001 (-3278)	4970 (-3247)	---
Chattanooga	5024 (-3301)	5026 (-3303)	---
Chattanooga Sand Zone	5034 (-3311)	5040 (-3317)	---
Viola	5073 (-3350)	5069 (-3346)	---
Simpson Sand	5242 (-3519)	5243 (-3520)	---
Total Depth	5299 (-3576)	5300 (-3577)	---

RECEIVED
 KANSAS CORPORATION COMMISSION
 JUN 18 2001
 CONSERVATION DIVISION

DESCRIPTION OF ZONES OF INTEREST

DST #1: Mississippi - 4795' to 4830', 30-30-30-120, weak blow for 2 minutes, recovered 15' mud, ISIP 68 psi, IFP 113-68, FFP 68-79, FSIP 93 psi, HP 2364-2299.

DST #2: Mississippi - 4840' to 4885', 45-60-60-120, fair to weak blow, 370' GIP, recovered 50' SO & GCM (2% oil & 2% gas), ISIP 204 psi, IFP 90-68, FFP 90-90, FSIP 845 psi (still building), HP 2441-2331.

REMARKS & RECOMMENDATIONS

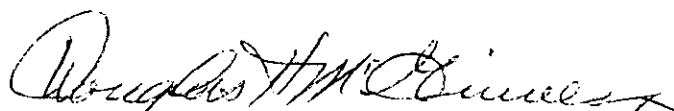
There were no shows of hydrocarbons detected in the samples above the Mississippian. The upper portion of the Mississippi section that is gas productive in the Oxy #1 Sooter (SW SE NE of Section 2-34S-14W) was not developed. DST #1 covered the oil zone perforated in the #1 Sooter and merits no further testing. DST #2 covered a Basal Mississippi zone structurally 10' lower to the TXO #3 Ellis (SW NE SW of Section 35-33S-14W) which was completed for 43 BO + 32 BW + 500 MCFGPD in August, 1991.

The Chattanooga was encountered with a sandy phase, some dirty sand, some clean sand, which was fine grained, subangular and when broke yielded good gas bubble and pale gold oil film in the wet samples, fluorescence, black to gilsonite stain. This zone merits further testing. The Viola and Simpson formations did not reveal evidence of hydrocarbons on sample examination.

Geological Report (Cont.)
#1-A Gordon
Barber County, Kansas
Page 3

It is recommended that the Mississippi zone, 4844' to 4876', and the Chattanooga Zone, 5030' to 5059', be perforated and stimulated with acid as necessary to obtain commercial production.

Respectfully submitted,


Douglas H. McGinness
Consulting Petroleum Geologist

DHM/drk

RECEIVED
KANSAS CORPORATION COMMISSION
JUN 18 2001
CONSERVATION DIVISION