

To: STATE CORPORATION COMMISSION
CONSERVATION DIVISION - PLUGGING SECTION
200 COLORADO DERBY BUILDING
WICHITA, KANSAS 67202

API NUMBER 15-007-2,125-0000
C-SW-SW, Sec. 31, T. 34 S, R. 12 W/B
_____ feet from N/S section line
_____ feet from W/E section line

TECHNICIAN'S PLUGGING REPORT

Operator License 05729

Lease Name Raging Bull Well 01

Operator: Dynamon Energy Inc.
Name &
Address 4005 E. Kellogg Wichita Kansas
67218

County Barber

Well Total Depth 4930 feet

Conductor Pipe: Size _____ feet

Surface Casing: Size 8 1/8" feet 416

Abandoned Oil Well Gas Well _____ Input Well _____ SWD Well _____ D&A _____

Other well as hereinafter indicated _____

Plugging Contractor Clark Corporation License Number 5105

Address 107 W. Fowler Medicine Lodge Kansas 67104

Company to plug at: Hour: 9:00 AM Day: 12 Month: January Year: 1983

VERBAL PLUGGING ORDERS GIVEN TO Elmo Morganstein

(company name) Clark Corporation (phone) 316-586-5665

were: 1st sanded bottom back to 4060' dumped 5 bbls cement on top of sand through bailer and plug pumped through head on 8 1/8" w/ 3 bbls bulls. 50 bbls cement. 25 bbls gell. 1 bbl bulls release rubber plug. 120 bbls cement. ^{sum} cementing accomplished the plugging w/ 50/50 pass 4 1/2 gell 3% C.C.

Signed Paul A. Luthi
(TECHNICIAN)

Plugging Operations attended by Agent?: All Part _____ None _____

Operations Completed: Hour: 10:30 AM Day: 12 Month: January Year: 1983

ACTUAL PLUGGING REPORT This well was plugged as orders given in above paragraphs.

Remarks: They measured 3488' of 5 1/2" production pipe. Mr. Steve Durrman gave the orders & Mr. J. H. Metz saw the well plugged. May press 400 # Shut in 200 #

I hereby certify that the above plugging instructions were given as herein stated and that I (did / did not) observe this plugging.

RECEIVED
STATE CORPORATION COMMISSION
1-14-83
JAN 14 1983
CONSERVATION DIVISION
Wichita, Kansas

Signed Paul A. Luthi
(TECHNICIAN)

FORM CP-2/3
Rev. 9-82

INVOICED

DATE 2-7-83

INV. NO. 2347-W

COUNTY BARBER 15-007-2125-0000
 FIELD or LOCATION SEC. 31-34S-12W
 WELL RAGING BULL NO. 1
 WILD BOYS LAND, CATTLE, & OIL &
 COMPANY THE SILVER BULLET OIL COMPANY

COMPANY WILD BOYS LAND, CATTLE, & OIL COMPANY
 LTD. & THE SILVER BULLET OIL COMPANY
 WELL RAGING BULL NO. 1
 FIELD
 COUNTY BARBER STATE KANSAS
 API Serial No. C-SW-SW
 Location: C-SW-SW
 Sec. 31 Twp. 34S Rge. 12W
 Other Services: D11-CR CNI/FDC-CR
 Permanent Datum: GROUND LEVEL; Elev.: 1438
 Log Measured From K.B.; 15 Ft. Above Perm. Datum Elev.: K.B. 1454
 Drilling Measured From K.B. D.F. G.L. 1438

Date	5-6-81		
Run No.	ONE	RECEIVED	
Depth-Driller	4930	STATE OPERATIONAL DIVISION	
Depth-Logger (Schl.)	4926		
Bim. Log Interval	4924		
Top Log Interval	2500		
Casing-Driller	8 5/8 @ 419	@ CONSERVATION DIVISION	@
Casing-Logger	419	Wichita Kansas	
Bit Size	7 7/8		
Type Fluid in Hole	FCM		
Dens. Visc.	9.0 43		
pH Fluid Loss	10.0 9.6 ml		
Source of Sample	CIRCULATED		
Rm @ Meas. Temp.	493 @ 73 °F	.315 @ 114 °F	@ °F
Rmf @ Meas. Temp.	323 @ 72 °F	.204 @ 114 °F	@ °F
Rmc @ Meas. Temp.	@ °F	@ °F	@ °F
Source: Rmf Rmc	M		
Rm @ BHT	.315 @ 114 °F	@ °F	@ °F
Circulation Stopped	1430		
Logger on Bottom	1830		
Max. Rec. Temp.	114 °F		
Equip. Location	7714 GREAT BEND		
Recorded By	INGRAHAM		
Witnessed By			

OLD HERE The well name, location and borehole reference data were furnished by the customer.

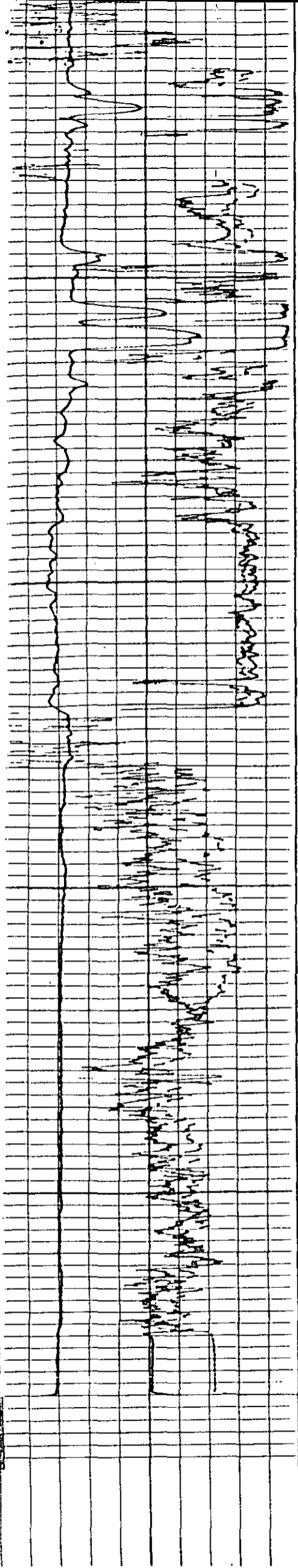
UN NO.	ONE	SCALE CHANGES			
Service Order No.	226362	Typé Log	Depth	Scale Up Hole	Scale D
Fluid Level	FULL				
Salinity-PPM CL	17,000				

EQUIPMENT DATA		REMARKS:			
Panel (MPP)	233				
Cartridge (MPC)	194				
Probe (MPS)	135				
Probe Recorder (TTR)					
Depth Encoder (DRE)					
Pressure Wheel (CPW)					
BOTTOM HOLE TEMPERATURE					
Thermometer #1	°F	°F	°F	°F	
Thermometer #2	°F	°F	°F	°F	
Thermometer #3	°F	°F	°F	°F	

All interpretations are opinions based on inferences from electrical or other measurements and we cannot, and do not guarantee the accuracy or correctness of any interpretations, and we shall not, except in the case of gross or willful negligence on our part, be liable or responsible for any loss, costs, damages or expenses incurred or sustained by anyone resulting from any interpretation made by any of our officers, agents or employees. These interpretations are also subject to Clause 7 of our General Terms and Conditions as set out in our current Price Schedule.

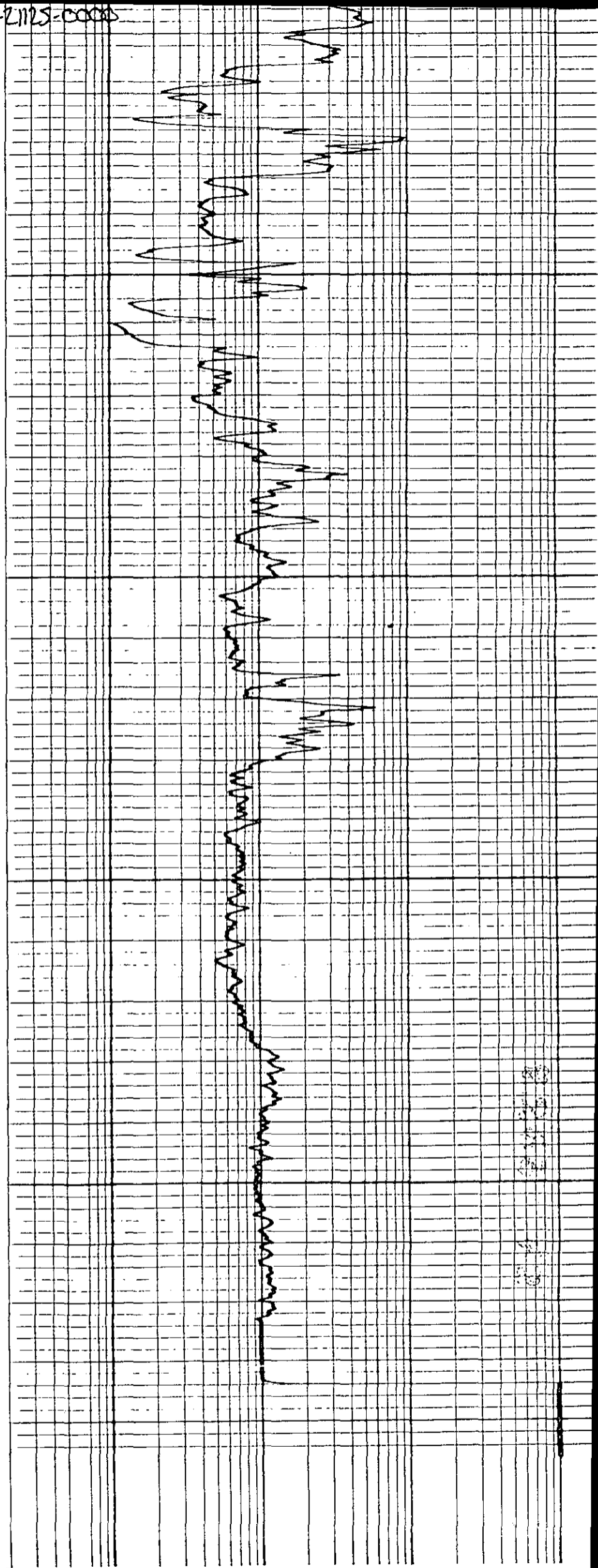
CALIPER DIAM. IN INCHES	DEPTH	RESISTIVITY OHMS. M ² /M PROXIMITY LOG			
		.2	1.0	10	100
6" 16"					
RESISTIVITY OHMS. M ² /M MICRO INVERSE 1" X 1"					
20 0					
MICRO NORMAL 2"					
20 0					

15-007-21125-00005



4800

4900



RESISTIVITY OHMS M²/M
 MICRO INVERSE 1" X 1"