

Conservation Division Form C-5 Revised

TYPE TEST: Initial Annual Workover Reclassification TEST DATE: 1-27-86

Company: Anadarko Petroleum Corp. Lease: Martin A Well No.: 1

County: Harper Location: 1980' From S & E lines Section: 11 Township: 34S Range: 9W Acres: 1

Field: Hibbord Reservoir: Mississippi Pipeline Connection: Groendyke

Completion Date: 6-22-74 Type Completion(Describe): Single Oil Plug Back T.D.: 4580' Packer Set At:

Production Method: Type Fluid Production: API Gravity of Liquid/Oil:

Flowing	Pumping X	Gas Lift				
Casing Size	Weight	I.D.	Set At	Perforations	To	
4-1/2"	10.5#	4.052"	4590'		4545'	4578
Tubing Size	Weight	I.D.	Set At	Perforations	To	
2-3/8"	4.7#	1.995"	4579'			

Pretest: Starting Date: 1-27-86 Time: -- Ending Date: -- Time: -- Duration Hrs.: 24

OIL PRODUCTION OBSERVED DATA

Producing Wellhead Pressure			Separator Pressure			Choke Size			
Casing:	20	Tubing:	20	18		Pumping			
Bbls./In.	Tank		Starting Gauge			Ending Gauge		Net Prod. Bbls.	
1.67	Size	Number	Feet	Inches	Barrels	Feet	Inches	Barrels	Water Oil
Pretest:									
Test:	189	300	3	4	66.80	3	6	70.14	3.34
Test:									

GAS PRODUCTION OBSERVED DATA

Orifice Meter Connections			Orifice Meter Range					
Pipe Taps:	Flange Taps:	Differential:	Static Pressure:					
Measuring Device	Run-Prover-Tester Size	Orifice Size	Meter-Prover-Tester Pressure		Diff. Press.	Gravity	Flowing	
Orifice Meter			In.Water	In.Merc.	Psig or (Pd)	(hw) or (hd)	Gas (Gg)	Temp. (t)
Critical Flow Prover								
Orifice Well Tester	2"	.250	24"				.700	60

GAS FLOW RATE CALCULATIONS (R)

Coeff. (Fb)(Fp)(OWTC)	Meter-Prover Press.(Psia)(Pm)	Extension $\sqrt{hw \times Pm}$	Gravity Factor (Fg)	Flowing Temp. Factor (Ft)	Deviation Factor (Fpv)	Chart Factor (Fd)
8.22			.9258	1.0	--	--

Gas Prod. MCFD: 7.6 Oil Prod. Bbls./Day: 3 Gas/Oil Ratio (GOR) = 2533 Cubic Ft. per Bbl.

The undersigned authority, on behalf of the Company, states that he is duly authorized to make the above report and that he has knowledge of the facts stated therein, and that said report is true and correct. Executed this the 27 day of 19 86

For Offset Operator

For State

For Company

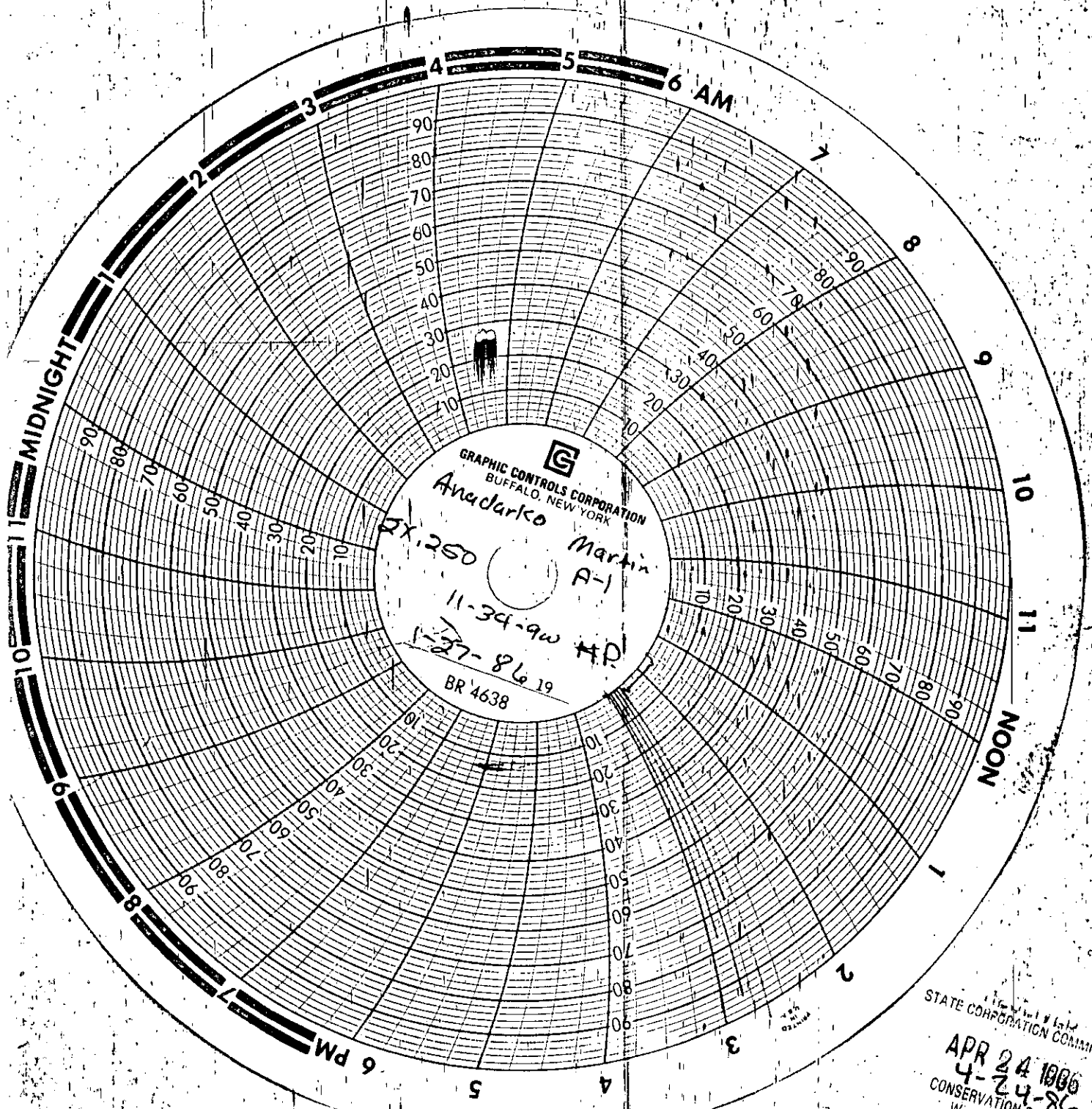
STATE CORPORATION COMMISSION

Handwritten signature

APR 24 1986
 4-24-86
 CONSERVATION DIVISION
 Wichita, Kansas

15-577-2042-0000

Hubbard



STATE CORPORATION COMMISSION
APR 24 1986
4-24-86
CONSERVATION DIVISION
Wichita, Kansas