

JAN 2 1968

STATE OF KANSAS
STATE CORPORATION COMMISSION

Form CP-4

Give All Information Completely
Make Required Affidavit
Mail or Deliver Report to:
Conservation Division
State Corporation Commission
212 No. Market
Wichita, Kansas

WELL PLUGGING RECORD

Comanche County. Sec. 24 Twp. 31s Rge. 16 (W) (W)

Location as "NE/CNW&SW&" or footage from lines W/2 NE

Lease Owner Petroleum Inc.,

Lease Name Robbins Unit Well No. B # 1

Office Address R.R. # 2, Great Bend, Kansas 67530

Character of Well (completed as Oil, Gas or Dry Hole) Dry Hole

Date well completed December 13 19 67

Application for plugging filed December 13 19 67

Application for plugging approved December 13 19 67

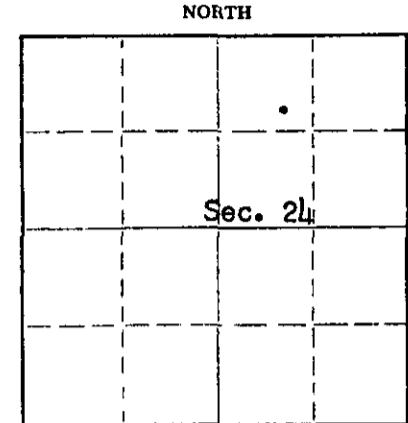
Plugging commenced December 13 19 67

Plugging completed December 13 19 67

Reason for abandonment of well or producing formation No producible zone.

If a producing well is abandoned, date of last production None 19

Was permission obtained from the Conservation Division or its agents before plugging was commenced? Yes



Locate well correctly on above Section Plat

Name of Conservation Agent who supervised plugging of this well Archie Elving

Producing formation Depth to top Bottom Total Depth of Well 4911 Feet

Show depth and thickness of all water, oil and gas formations.

OIL, GAS OR WATER RECORDS

CASING RECORD

FORMATION	CONTENT	FROM	TO	SIZE	PUT IN	PULLED OUT
				8-5/8"	511'	None

Describe in detail the manner in which the well was plugged, indicating where the mud fluid was placed and the method or methods used in introducing it into the hole. If cement or other plugs were used, state the character of same and depth placed, from feet to feet for each plug set.

Mud to 500', 25 sacks cement, 1 sack hulls, wooden plug, placed 23 sacks cement on top of plug. Mud to 40'. 1 sack dry cement, 1 sack hulls, wooden plug. Placed 9 sacks cement on top of plug to base of well cellar.

(If additional description is necessary, use BACK of this sheet)

Name of Plugging Contractor Garvey Drilling Co.

Address R.R. # 2, Great Bend, Kansas 67530

STATE OF Kansas COUNTY OF Barton ss.

Monte Chadd (employee of owner) or (~~owner~~) of the above-described

well, being first duly sworn on oath, says: That I have knowledge of the facts, statements, and matters herein contained and the log of the above-described well as filed and that the same are true and correct. So help me God. Monte Chadd Dist, Prod. Supt.

(Signature) Monte Chadd

R.R. # 2, Great Bend, Kansas 67530

(Address)

SUBSCRIBED AND SWORN TO before me this 29 th day of December, 19 67

Arthur J. Smith
Notary Public.

My commission expires April 11, 1971

WELL LOG

COMPANY Petroleum, Inc.

SEC. 24 T. 31S R. 16W

FARM Robbins Unit

NO. B-1

LOC. W/2 NE

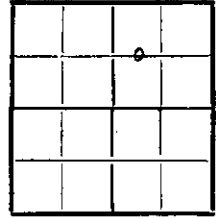
TOTAL DEPTH 4911'

COUNTY Comanche

COMM. 11-30-67

COMP. 12-13-67

CONTRACTOR Garvey Drilling Company



CASING 8 5/8" @ 511' w/350 SX

ELEVATION 1972' DF

PRODUCTION D & A

FIGURES INDICATE BOTTOM OF FORMATIONS

492' Sand, Gravel and Red Bed
965' Red Bed and Shale
1140' Lime and Shale
1710' Red Bed, Shale and Lime
1950' Shale
2420' Lime and Shale
2610' Lime
3355' Lime and Shale
3490' Shale and Lime
3860' Lime and Shale
3939' Lime
4125' Lime and Shale
4190' Shale
4295' Lime and Shale
4565' Lime
4690' Lime and Shale
4740' Lime
4798' Lime and Shale
4911' Lime
4911' RTD

JAN 2 1967

State of Kansas
County of Barton } ss

I, Sam N. Stephens of Garvey Drilling Company

upon oath state the above and foregoing is a true and correct copy of the log of the Robbins Unit B-1 well.

Sam N. Stephens

Subscribed and sworn to before me this 27th day of December 1967

My Commission Expires: November 5th, 1969

Richard A. Boyd
NOTARY PUBLIC