

TYPE

# NOTICE OF INTENTION TO DRILL

C-1

TO BE FILED WITH THE STATE CORPORATION COMMISSION  
PRIOR TO COMMENCEMENT OF WELL

API Number 15-135-21-107 00-00  
(For office use only)

1. Operator Cameron K. Reed

Starting Date Nov. 7, 1975

Address 11 1/2 E. Main, Chanute, Kansas 66720

County Ness

2. Contractor Strata Drilling Company

Sec 34 Twp 17 S Rge 25 W

Address Great Bend, Kansas

Spot Location NW NW SW

3. Type of Equipment: Rotary X Cable Tool \_\_\_\_\_

Nearest Lease Line 330 ft.

4. Well to be Drilled for: Oil X Gas \_\_\_\_\_

Lease Name Reed

Disposal \_\_\_\_\_ Input \_\_\_\_\_ Other \_\_\_\_\_

5. Depth of Deepest Fresh Water within 1 mile 100 ft.

6. Depth of Municipal Water Well within 3 miles None ft.

Well No. 1

7. Depth to Protect all Fresh Water 250 ft.

8. Amount of Surface Casing to be set 325 ft.

Est. Total Depth 4300 ft.

9. Alternate No. 1 X No. 2 X

REMARKS:

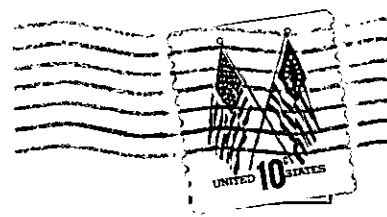
OPERATOR STATES THAT HE WILL COMPLY WITH K. S. A. 55-128

Signature of Operator *Cameron K. Reed*

Production Supt.



*OK/BSU*



**State Corporation Commission of Kansas**  
**Conservation Division**  
**P. O. Box 17027**  
**Wichita, Kansas 67217**

RECEIVED  
 STATE CORPORATION COMMISSION

OCT 16 1975

CONSERVATION DIVISION  
 Wichita, Kansas

(IF PREFERRED, MAIL IN ENVELOPE)