

STATE OF KANSAS
STATE CORPORATION COMMISSION

Form CP-4

Give All Information Completely
Make Required Affidavit
Mail or Deliver Report to:
Conservation Division
State Corporation Commission
212 No. Market
Wichita, Kansas

WELL PLUGGING RECORD

COMANCHE County, Sec. 12 Twp. 31s. Rge. 17 (E) (W)

Location as "NE/CNW%SW%" or footage from lines APP. NE

Lease Owner PETROLEUM, INC.

Lease Name TRUMMEL UNIT 'B' Well No. 1

Office Address R.R. #2, GREAT BEND, KANSAS

Character of Well (completed as Oil, Gas or Dry Hole) DRY HOLE

Date well completed DECEMBER 1 19 66

Application for plugging filed DECEMBER 1 19 66

Application for plugging approved DECEMBER 1 19 66

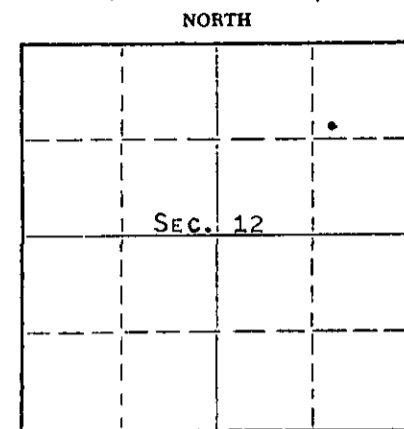
Plugging commenced DECEMBER 1 19 66

Plugging completed DECEMBER 1 19 66

Reason for abandonment of well or producing formation NO PRODUCIBLE ZONE

If a producing well is abandoned, date of last production NONE 19

Was permission obtained from the Conservation Division or its agents before plugging was commenced? YES



Locate well correctly on above Section Plat

Name of Conservation Agent who supervised plugging of this well S ARCHIE ELVING

Producing formation Depth to top Bottom Total Depth of Well 5009 Feet

Show depth and thickness of all water, oil and gas formations.

OIL, GAS OR WATER RECORDS

CASING RECORD

FORMATION	CONTENT	FROM	TO	SIZE	PUT IN	PULLED OUT
				8-5/8"	530'	NONE

Describe in detail the manner in which the well was plugged, indicating where the mud fluid was placed and the method or methods used in introducing it into the hole. If cement or other plugs were used, state the character of same and depth placed, from feet to feet for each plug set.

MUD TO 500', 1 SACK DRY CEMENT, 1/2 SACK HULLS, FOLLOWED BY WOODEN PLUG, PLACED 24 SACKS CEMENT ON TOP OF PLUG. MUD TO 40', W/1 SACK DRY CEMENT, 1/2 SACK HULLS, FOLLOWED BY WOODEN PLUG, PLACED 9 SACKS CEMENT ON TOP OF PLUG TO BASE OF WELL CELLAR.

RECEIVED
STATE CORPORATION COMMISSION

DEC 8 1966

CONSERVATION DIVISION
Wichita, Kansas

(If additional description is necessary, use BACK of this sheet)

Name of Plugging Contractor GARVEY DRILLING COMPANY
Address R.R. #2, GREAT BEND, KANSAS

STATE OF KANSAS, COUNTY OF BARTON, ss.

MONTE CHADD (employee of owner) or (owner or operator) of the above-described well, being first duly sworn on oath, says: That I have knowledge of the facts, statements, and matters herein contained and the log of the above-described well as filed and that the same are true and correct. So help me God.

(Signature) MONTE CHADD, DIST. PROD. SUPT.
R.R. #2, GREAT BEND, KANSAS (Address)

SUBSCRIBED AND SWORN to before me this 7 day of DECEMBER, 19 66

Richard W. Dumble
Notary Public.

My commission expires MAY 28, 1969

WELL LOG

COMPANY Petroleum, Incorporated
FARM Trummel Unit NO. B-1
TOTAL DEPTH 5009'
COMM. 11-18-66 COMP. 12-1-66
CONTRACTOR Garvey Drilling Company
CASING 8 5/8" @ 530' w/350 sx

SEC. 12 T. 31S R. 17W
LOC. App NE

COUNTY Comanche



ELEVATION 2080' KB

PRODUCTION D & A

FIGURES INDICATE BOTTOM OF FORMATIONS

- 40' Clay and Sand
- 310' Shale
- 320' Anhydrite
- 508' Shale
- 1020' Anhydrite
- 2080' Shale and Red Bed
- 2320' Shale and Lime
- 2710' Lime
- 3680' Lime and Shale
- 3785' Lime
- 4018' Lime and Shale
- 4125' Lime
- 4275' Lime and Shale
- 4982' Lime
- 5009' Lime and Chert
- 5009' RTD

RECEIVED
STATE CORPORATION COMMISSION
DEC 8 1966
CONSERVATION DIVISION
Wichita, Kansas

State of Kansas }
County of Barton } 88

I, Sam N. Stephens of Garvey Drilling Company

upon oath state the above and foregoing is a true and correct copy of the log of the Trummel Unit B-1 well.

Sam N. Stephens

Subscribed and sworn to before me this 6th day of December 1966

My Commission Expires: November 5th, 1969

Richard Boy
NOTARY PUBLIC