

KANSAS CORPORATION COMMISSION
OIL & GAS CONSERVATION DIVISION

WELL PLUGGING APPLICATION

Please TYPE Form and File ONE Copy

Form CP-1
September 2003
This Form must be Typed
Form must be Signed
All blanks must be Filled

API # 15 - 035-²⁰⁰¹⁵30328-00-00 (Identifier Number of this well). This must be listed for wells drilled since 1967; if no API # was issued,

indicate original spud or completion date spud date 03-07-67

Well Operator: Gen-Dor Oil Company KCC License #: 9576
(Owner / Company Name) (Operator's)

Address: 8135 281st rd City: Cambridge

State: Kansas Zip Code: 67023 Contact Phone: (620) 467 - 2615

Lease: Hann Well #: 1 Sec. 10 Twp. 31 S. R. 3 East West

SE NE SW Spot Location / QQQQ County: Cowley

1650 1649 Feet (in exact footage) From North / South (from nearest outside section corner) Line of Section (Not Lease Line)

2340 2944 Feet (in exact footage) From East / West (from nearest outside section corner) Line of Section (Not Lease Line)

Check One: Oil Well Gas Well D&A Cathodic Water Supply Well

SWD Docket # _____ ENHR Docket # _____ Other: _____

Conductor Casing Size: none Set at: _____ Cemented with: _____ Sacks

Surface Casing Size: 8 5/8 Set at: 214 Cemented with: 150 Sacks

Production Casing Size: 5 1/2 Set at: 3120 Cemented with: 75 Sacks

List (ALL) Perforations and Bridgeplug Sets: perfs are estimated to be from 3071 to 3077, this information is from the core analysis and geologist report

Elevation: 1260 (G.L. / K.B.) T.D.: 3120 PBTD: 3109 Anhydrite Depth: unknown
(Stone Corral Formation)

Condition of Well: Good Poor Casing Leak Junk in Hole

Proposed Method of Plugging (attach a separate page if additional space is needed): fill bottom of well with gravel to 50 feet above the perfs and dump bael 6sx of cement on top of the gravel, shoot off casing and pull it out of the well bore and circulate cement from a depth to surface as required by the Kansas Corporation Commission

Is Well Log attached to this application as required? Yes No Is ACO-1 filed? Yes No

If not explain why? we did not get an E-log with the files, I am sending copies of the core analysis and the geologist log and report

Plugging of this Well will be done in accordance with K.S.A. 55-101 et. seq. and the Rules and Regulations of the State Corporation Commission.

List Name of Company Representative authorized to be in charge of plugging operations: (Ron Whiteman cell # 620-222-4316)

Brent Whiteman (home # 620-394-2841) cell # >>>> Phone: (620) 222 - 7808

Address: 3777 251st rd City / State: Atlanta, Kansas 67008

Plugging Contractor: Gen-Dor Oil Company KCC License #: 9576
(Company Name) (Contractor's)

Address: 8135 281st rd, Cambridge Kansas 67023 Phone: (620) 467 - 2615

Proposed Date and Hour of Plugging (if known?): someone will call in when we are ready to commence plugging of the well

Payment of the Plugging Fee (K.A.R. 82-3-118) will be guaranteed by Operator or Agent

Date: Feb 21st 2006 Authorized Operator / Agent: Brent Whiteman (owner)
(Signature)

Mail to: KCC - Conservation Division, 130 S. Market - Room 2078, Wichita, Kansas 67202

RECEIVED
FEB 22 2006
KCC WICHITA

Kansas Cores

15-035-30328-00-00

PETROLEUM RESERVOIR ENGINEERING

CORE ANALYSIS

Mar. 12, 1967

1026 NORTH LIGHTNER
WICHITA, KANSAS 67208

Re: CORE ANALYSIS REPORT
Brunsen-Spines
Hann #1
Cowley County
Kansas

Brunsen-Spines
Wichita Plaza Bldg.
Wichita, Kansas

Gentlemen:

The cores from your well, Hann #1, Cowley County, Kansas have been analysed for permeability and porosity. The data will be found tabulated on the following pages and indicated on the coregraph. The residual fluids were not measured so they are not included in this report.

The following is a short discussion of the section cored and analysed.

3063' to 3076'

The Bartlesville sand encountered at this depth was somewhat cleaner and more friable than that to the east, and also a little thinner section. The permeabilities and porosities were both higher than those to the east, and good bleeding oil was noted. This section was only slightly quartzitic toward the bottom, and retained the higher permeabilities throughout.

Yours very truly,

KANSAS CORES

Ivan L. Stuber
Ivan L. Stuber

Attachments

cc: 3 copies to Brunsen-Spines, Wichita, Kansas

RECEIVED
FEB 22 2006
KCC WICHITA

Kansas Cores

PETROLEUM RESERVOIR ENGINEERING WICHITA, KANSAS

COMPANY Brunsen-Spines DATE 3-12-67
 WELL Hann #1 ANALYST IS
 FIELD _____
 COUNTY Cowley STATE Kansas

The analyses and interpretations are based on material brought to Kansas Cores by the client, and such data and interpretations are accessible only to that company which the client represents. Kansas Cores makes no warranty and makes no guarantee for the interpretations and opinions of the data. Our opinions of an analysis are placed at the discretion of the operator.

PERMEABILITY MILLIDARCYS ~~0-100~~

200 150 100 50 0

POROSITY-% ~~X-20~~

20 10 0

CONNATE WATER % SATURATION

0

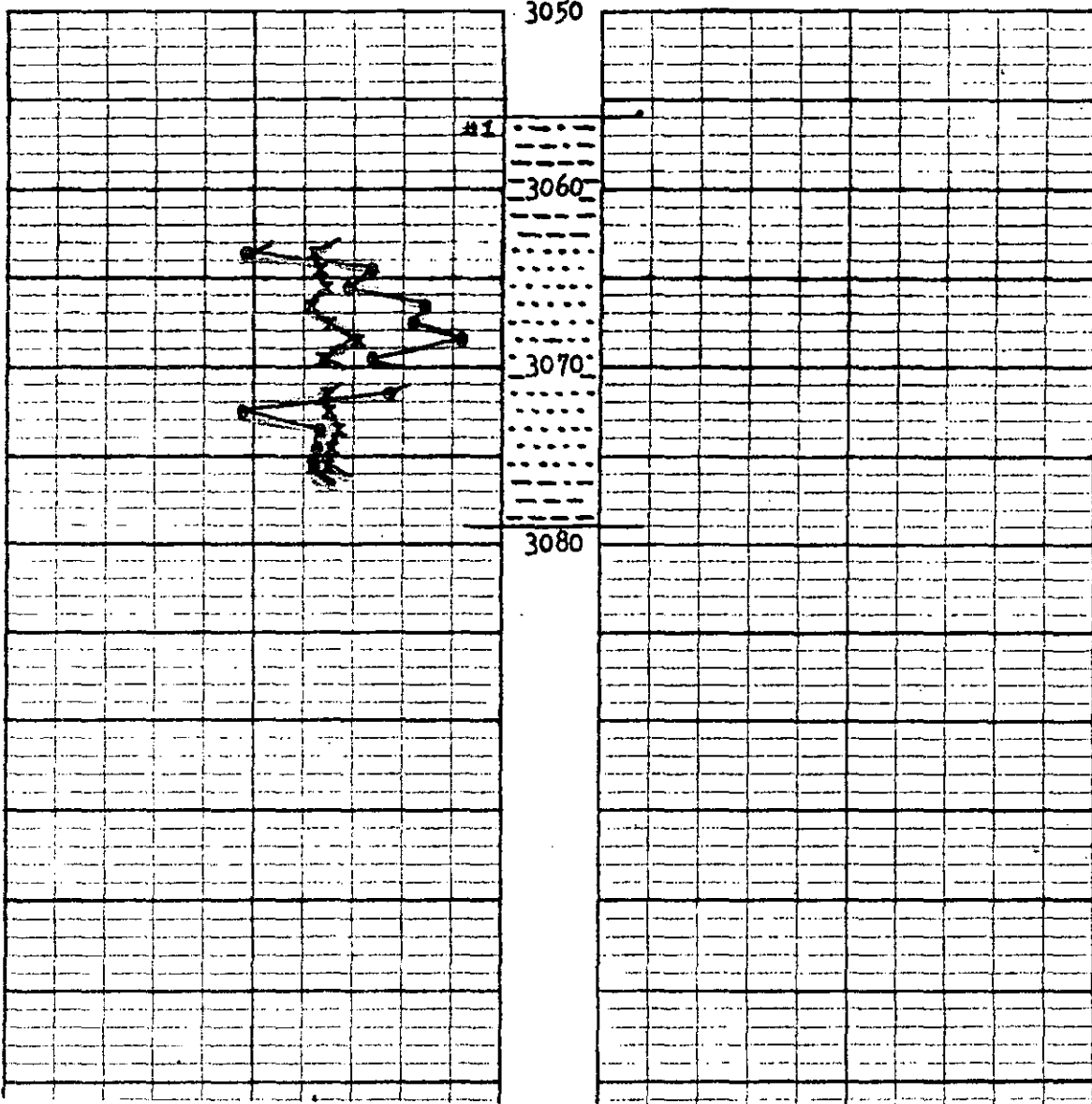
OIL % PORE SATURATION ~~X-20~~

0

RECEIVED

FEB 22 2006

KCC WICHITA



Re: CORE DESCRIPTION
Brunson-Spines
Hann #1
Cewley County
Kansas

| <u>CORE #1</u> | <u>3056' to 3079'</u> | <u>Cut 23'</u> | <u>Rec. 23'</u> |
|-------------------------|---|----------------|-----------------|
| 3056--57 $\frac{1}{2}$ | Fine grained slightly shaley brown friable sand with numerous thin black shale laminations and streaks: Good stain and odor, some bleeding oil | | |
| 3057 $\frac{1}{2}$ --58 | Silty very fine grained sand and shaley sand with few thin streaks clean sand: Fair stain, streaked | | |
| 3058--63 | Hard black shale | | |
| 3063--64 | Soft fine to medium grained friable brown clean sand: Good stain and odor, bleeding oil | | |
| 3064--69 | Same as above, trace black micaceous shaley partings bottem: Bleeding oil | | |
| 3069--70 | Same as above with 2" black shale middle: Bleeding oil | | |
| 3070--71 | Good sand top 4", rest hard black shale | | |
| 3071--74 | Fine to medium grained brown friable sand, few green shale inclusions top and some fine clear blue rounded quartz grains bottem 2': Good stain and odor, bleeding oil | | |
| 3074--76 $\frac{1}{2}$ | Soft dark brown friable medium grained sand, trace black micaceous shale partings: Good stain and odor, bleeding oil | | |
| 3076 $\frac{1}{2}$ --79 | Hard black shale | | |

RECEIVED
FEB 22 2006
KCC WICHITA

Kansas Cores

PETROLEUM RESERVOIR ENGINEERING
WICHITA, KANSAS 67208

WELL Hann #1 COUNTY Cowley STATE Kansas
COMPANY Brunsen-Spines DATE 3-12-67 FILE No. S-720
FIELD _____ TYPE CORES Diamond ANALYST IS

ANALYSIS DATA AND INTERPRETATIONS

| SAMPLE No. | DEPTH | PERMEABILITY MILLIDARCYS | | POROSITY % | SATURATION WATER % PORE SPACE | SATURATION OIL % PORE SPACE | PROBABLE PRODUCTION | REMARKS |
|------------|------------|--------------------------|----------|------------|-------------------------------|-----------------------------|---------------------|---------|
| | | HORIZONTAL | VERTICAL | | | | | |
| 1 | 3063 64 | 130 | 92.0 | 19.4 | | | | |
| 2 | 3064 65 | 69.2 | 43.7 | 18.7 | | | | |
| 3 | 3065 66 | 77.3 | 82.6 | 18.0 | | | | |
| 4 | 3066 67 | 41.6 | 35.9 | 19.3 | | | | |
| 5 | 3067 68 | 48.7 | 28.3 | 17.9 | | | | |
| 6 | 3068 69 | 23.6 | 0.0 | 14.7 | | | | |
| 7 | 3069 70 | 69.6 | 36.5 | 18.5 | | | | |
| 8 | 3071 72 | 57.2 | 52.6 | 18.1 | | | | |
| 9 | 3072 73 | 130 | 110 | 17.5 | | | | |
| 10 | 3073 74 | 93.1 | 92.0 | 16.6 | | | | |
| 11 | 3074 75 | 85.0 | 24.3 | 18.4 | | | | |
| 12 | 3075 76 | 91.7 | 81.5 | 18.7 | | | | |

RECEIVED
FEB 22 2006
KCC WICHITA

SING RECORD

8 5/8 214' Cemented
w/150 sacks

5 1/2 3120' Cemented
w/75 sacks

T.D. 3120'

Location: SE NE SWAR 22 1967
Section: 10-31S-3E
Cowley County, Kansas
Farm: Hann #1
Well Owner: Brunson & Spines
Contractor: WHITE & ELLIS
DRILLING, INC.
Commenced: 3-7-67
Completed: 3-12-67

KELLY BUSHING MEASUREMENT 5' ABOVE GROUND LEVEL.

| <u>FORMATION</u> | <u>DEPTH</u> |
|----------------------|--------------|
| Cellar | 0-8 |
| Soil & Clay | 30 |
| Lime | 75 |
| Lime & Shale | 240 |
| Lime w/Shale stks. | 500 |
| Shale & Lime | 865 |
| Shale & Shells | 1120 |
| Lime & Shale (stks.) | 1349 |
| Shale & Lime | 1635 |
| Lime & Shale | 1900 |
| Shale & Lime | 2020 |
| Sdy. Shale | 2130 |
| Sand | 2290 |
| Shale | 2528 |
| Lime | 2767 |
| Shale | 2770 |
| Shale w/Lime stks. | 2884 |
| Lime | 2970 |
| Lime & Shales | 3079 |
| Sdy. Shale | 3095 |
| Shale & Lime | 3120 |

TOP

Kansas City 2528

Core #1 3056 - 3079

RECEIVED
FEB 22 2006
KCC WICHITA

T. G. WRIGHT
CONSULTING GEOLOGIST
805 WICHITA PLAZA
WICHITA, KANSAS 67202

March 14, 1967

GEOLOGICAL WELL REPORT

Brunson-Spines #1 Hann,
SE NE SW Section 10-T31S-R3E
Mowder Waterflood, Cowley County,
Kansas

Contractor: White & Ellis Drilling, Inc
Spud: March 7, 1967
Surface Casing: 8 5/8" @ 214
Production Casing: 5 1/2" @ 3110
Rotary Completion: March 12, 1967
Total Depth: 3120'

Brunson-Spines
800 Wichita Plaza
Wichita, Kansas

Gentlemen:

Listed below are the pertinent geological tops, an evaluation of the porosities encountered and a description of Bartlesville Sand core. The hole was not logged electrically before being cased and no drill stem tests were taken.

I arrived at the location at a depth of 2970 and witnessed the drilling to TD 3110'. Samples were examined from 2700-3110 TD.

Enclosed herewith is a copy of the plotted drilling time log which also includes lithology, geological tops and other pertinent data.

GEOLOGICAL TOPS

| | |
|---------------------|--------------|
| ELEVATION: | 1260 KB |
| KANSAS CITY | 2527 (-1267) |
| BASE OF KANSAS CITY | 2763 (-1503) |
| BARTLESVILLE SAND | 3055 (-1795) |

RECEIVED
FEB 22 2006
KCC WICHITA

| | |
|-----------------|---|
| BASE OF SAND | 3077 (-1817) |
| TOTAL DEPTH | 3120 |
| DIAMOND CORE #1 | 3056-79 Full recovery |
| 3056-57 | Fine, micaceous, dirty, sandstone, poor porosity, bleeding oil in streaks. |
| 3057-58 | As above with thin gray shale laminations, bleeding oil. |
| 3058-59 | Hard, dense, sandy limestone, gray with thin shale partings. |
| 3059-61 | Compact, gray shale |
| 3061-63 | Gray, laminated silty shale, oil stained. |
| 3063-66 | Sandstone, medium grained, somewhat dirty, fair porosity and staining, not bleeding oil. |
| 3066-68 | Sandstone, finer than above and not as clean. Fair porosity, bleeding oil. |
| 3068-69 | Sandstone, fine, dirty, micaceous laminations, poor porosity, bleeding oil. |
| 3069-70 | Laminated dark shale and fine, dirty sandstone, slight bleeding. |
| 3070-71 | Fine, dirty oil-stained sandstone. |
| 3071-77 | Sandstone, medium grained, slightly micaceous, cleaner than above, fair porosity, bleeding oil, well oil stained. |
| 3077-78 | Black shale |
| 3078-79 | Dark compact shale. |
| BEST SAND ZONE | 3071-77 |

RECEIVED
FEB 22 2006
KCC WICHITA