

15-071-20286-0001

STATE CORPORATION COMMISSION OF KANSAS  
OIL & GAS CONSERVATION DIVISION  
WELL COMPLETION OR RECOMPLETION FORM  
ACO-1 WELL HISTORY

DESCRIPTION OF WELL AND LEASE

Operator: license # 8076  
name Gamma Resources, Inc.  
address P. O. Box 6  
City/State/Zip Liberal, KS 67901

Operator Contact Person R. L. Higginbottom  
Phone (316) 624-3767

Contractor: license # N/A  
name Halliburton

Wellsite Geologist  
Phone  
PURCHASER

Designate Type of Completion  
 New Well  Re-Entry  Workover

Oil  SWD  Temp Abd  
 Gas  Inj  Delayed Comp.  
 Dry  Other (Core, Water Supply etc.)

If OWWO: old well info as follows:  
Operator Pylon Oil & Gas  
Well Name Claypool #1-10  
Comp. Date 4-83 Old Total Depth 3040'

WELL HISTORY

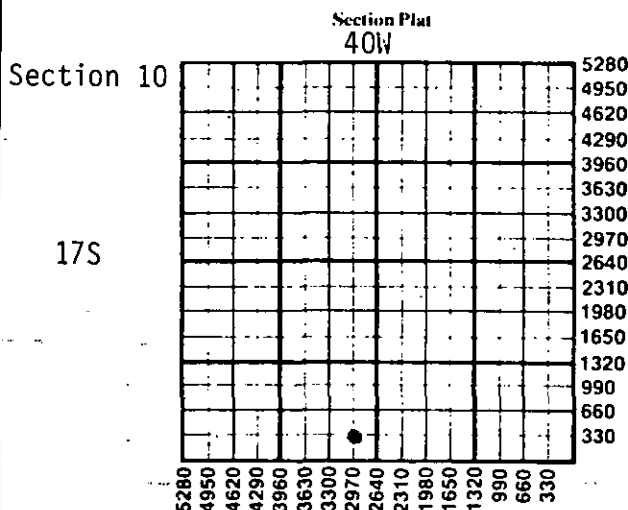
Drilling Method:  Mud Rotary  Air Rotary  Cable  
3-30-83 4-2-83 4-16-86  
Spud Date Date Reached TD Completion Date  
3040' 2900'  
Total Depth PBDT

Amount of Surface Pipe Set and Cemented at 282' feet  
Multiple Stage Cementing Collar Used?  Yes  No  
If Yes, Show Depth Set feet

If alternate 2 completion, cement circulated  
from 3030 feet depth to surface w/ 600 SX cmt

API NO. 15- 071-20,286  
County Greeley  
SE SE SW Sec 10 Twp 17S Rge 40  
330 Ft North from Southeast Corner of Section  
2970 Ft West from Southeast Corner of Section  
(Note: locate well in section plat below)

Lease Name Claypool Well# 1-10 (SWD)  
Field Name North Bradshaw  
Producing Formation Chase  
Elevation: Ground 3615' KB 3620'



WATER SUPPLY INFORMATION

Source of Water:  
Division of Water Resources Permit # D - 24,590  
 Groundwater 1320 Ft North From Southeast Corner and (Well) 1320 Ft. West From Southeast Corner of Sec 11 Twp 17S Rge 40  East  West  
 Surface Water None Ft North From Southeast Corner and (Stream, Pond etc.) Ft West From Southeast Corner Sec Twp Rge  East  West  
 Other (explain)  
(purchased from city, R.W.D.#)

Disposition of Produced Water:  Disposal  Repressuring  
Docket #: D - 24,590

INSTRUCTIONS: This form shall be completed in duplicate and filed with the Kansas Corporation Commission, 200 Colorado Derby Building, Wichita, Kansas 67202, within 90 days after completion or recompletion of any well. Rules 82-3-130 and 82-3-107 apply.

Information on side two of this form will be held confidential for a period of 12 months if requested in writing and submitted with the form. See rule 82-3-107 for confidentiality in excess of 12 months.

One copy of all wireline logs and drillers time log shall be attached with this form. Submit CP-4 form with all plugged wells. Submit CP-111 form with all temporarily abandoned wells.

All requirements of the statutes, rules, and regulations promulgated to regulate the oil and gas industry have been fully complied with and the statements herein are complete and correct to the best of my knowledge.

Signature Terry W Maxwell  
Title Secretary-Treasurer  
Date 4-17-86

Subscribed and sworn to before me this 17th day of April 19 86

Notary Public Edna M. Parish  
Date Commission Expires 2-19-89

EDNA M. PARISH  
NOTARY PUBLIC  
STATE OF KANSAS  
MY APPT. EXPIRES 2-19-89  
APR 18 1986  
STATE CORPORATION COMMISSION

K.C.C. OFFICE USE ONLY  
F  Letter of Confidentiality Attached  
C  Wireline Log Received  
C  Drillers Timelog Received  
Distribution  
 KCC  SWD/Rep  NGPA  
 KGS  Plug  Other (Specify)

Sec. 19 and 17 Rge. 40W

Operator Name Gamma Resources, Inc. Lease Name Claypool Well# 1-10 (SWD) SEC 10 TWP. 17S RGE. 40  East  West

**WELL LOG**

**INSTRUCTIONS:** Show important tops and base of formations penetrated. Detail all cores. Report all drill stem tests giving interval tested, time tool open and closed, flowing and shut-in pressures, whether shut-in pressure reached static level, hydrostatic pressures, bottom hole temperature, fluid recovery, and flow rates if gas to surface during test. Attach extra sheet if more space is needed. Attach copy of log.

Drill Stem Tests Taken  Yes  No  
 Samples Sent to Geological Survey  Yes  No  
 Cores Taken  Yes  No

Formation Description  
 Log  Sample

Name	Top	Bottom
Whitehorse	1708 -	1950'
Anhydrite	2614 -	2636'
U. Winfield	2932 -	2955'
U. Ft. Riley	2990 -	3010'

**CASING RECORD**  new  used

Report all strings set - conductor, surface, intermediate, production, etc.

Purpose of string	size hole drilled	size casing set (in O.D.)	weight lbs/ft.	setting depth	type of cement	# sacks used	type and percent additives
Surface	12 1/4"	8 5/8"	23#	282'			
Production	7 7/8"	4 1/2"	10.50#	3030'	Class H	450	
				3030'	50/50 Poz	150	10% salt

**PERFORATION RECORD**

**Acid, Fracture, Shot, Cement Squeeze Record**

shots per foot	specify footage of each interval perforated	(amount and kind of material used)	Depth
2	1760-1780'	2000 gallons 28% HCL	1760-1900'
2	1812-1836'		
2	1886-1900'		

**TUBING RECORD** size 2 3/8" set at 1708' packer at 1710' Liner Run  Yes  No

Date of First Production N/A Producing method  flowing  pumping  gas lift  Other (explain) \_\_\_\_\_

Estimated Production Per 24 Hours	Oil	Gas	Water	Gas-Oil Ratio	Gravity
	--- Bbls	--- MCF	--- Bbls	--- CFPB	---

**METHOD OF COMPLETION**

**Injection PRODUCTION INTERVAL**

Disposition of gas:  vented  sold  used on lease  
 open hole  perforation  other (specify) \_\_\_\_\_  
 None  Dually Completed.  Commingled  
 Injection PRODUCTION INTERVAL 1760-1900'