

KANSAS CORPORATION COMMISSION
OIL & GAS CONSERVATION DIVISION
WELL PLUGGING APPLICATION

Form CP-1
September 2003
This Form must be Typed
Form must be Signed
All blanks must be Filled

15-015-19732-00-00

Please TYPE Form and File ONE Copy

API # 15 - Drilled 1952 (Identifier Number of this well). This must be listed for wells drilled since 1967; if no API # was issued,

indicate original spud or completion date 4-8-52

Well Operator: DUNNE INVESTMENTS OPERATING, INC. KCC License #: 32979

Address: 8100 E. 22ND STREET NORTH, BUILDING 1100 City: WICHITA, KS 67226-2311

State: KANSAS Zip Code: 67226-2311 Contact Phone: (316) 684 - 6508

Lease: Koogler Well #: 93 Sec. 21 Twp. 26 S. R. 5 East West

NE - SW - NW Spot Location / QQQQ County: Butler

996 4291 Feet (in exact footage) From North / South (from nearest outside section corner) Line of Section (Not Lease Line)

1850 4413 Feet (in exact footage) From East / West (from nearest outside section corner) Line of Section (Not Lease Line)

Check One: Oil Well Gas Well D&A Cathodic Water Supply Well
 SWD Docket # _____ ENHR Docket # _____ Other: _____

Conductor Casing Size: _____ Set at: _____ Cemented with: _____ Sacks

Surface Casing Size: 8 5/8 Set at: 103 Cemented with: 85 Sacks

Production Casing Size: 5 1/2 Set at: 2513 Cemented with: 100 Sacks

List (ALL) Perforations and Bridgeplug Sets: 2482-2508, 2517-38, 2589-2628 Bridge Plug 2510

Elevation: 1299 (G.L. / K.B.) T.D.: 2556 P.B.T.D.: _____ Anhydrite Depth: _____
(Stone Corral Formation)

Condition of Well: Good Poor Casing Leak Junk in Hole

Proposed Method of Plugging (attach a separate page if additional space is needed): Per KCC Regulations

Is Well Log attached to this application as required? Yes No Is ACO-1 filed? Yes No

If not explain why? Drillers Log attached

Plugging of this Well will be done in accordance with K.S.A. 55-101 et. seq. and the Rules and Regulations of the State Corporation Commission.

List Name of Company Representative authorized to be in charge of plugging operations: Gary LaRue

Phone: (316) 651 - 6023

Address: P O BOX 232 City / State: EL DORADO, KS 67042

Plugging Contractor: PHILLIPS WELL SVC, INC. KCC License #: 5890

Address: P O BOX 1263, EL DORADO, KS 67042 Phone: (316) 321 - 6650

Proposed Date and Hour of Plugging (if known?): ASAP

Payment of the Plugging Fee (K.A.R. 82-3-118) will be guaranteed by Operator or Agent

Date: 12-27-06 Authorized Operator / Agent: [Signature]

Mail to: KCC - Conservation Division, 130 S. Market - Room 2078, Wichita, Kansas 67202

RECEIVED
KANSAS CORPORATION COMMISSION
DEC 28 2006
CONSERVATION DIVISION
WICHITA, KS

WELL RECORD

Total Depth Drilled 2550' Permit No. _____ Lease Name H.A. Koogler
 Oil String Set @ 2517' Serial No. _____ Well No. 93
 Plug Back Depth None Field KI Dorado
 Vertical or Directional Hole Vertical District KI Dorado
 County Butler State Kansas State Reg. District _____
 Section 21 Township 26S Range 5E Distance From Nearest Town (9) Nine Miles - KI Dorado
 Location of Well: 990' FWL, 1650' FWL, 187 1/4' KANSAS

DATE SUMMARY	Date	Work Performed By	Remarks
Location Staked	4-8-52	Civil Engineering Dept.	
Dig Pits	4-10-52	Bud Edwards Drig. Co., Wichita, Kans.	
Commenced Erecting Derrick			Portable RIG
Completed Erecting Derrick			Portable RIG
Commenced Raising Up	4-16-52	Bud Edwards Drig. Co., Wichita, Kans.	Port. Drig. RIG
Initial Raising Up Completed	4-16-52		
Commenced Drilling (Spud Date)	4-10-52		
Completed Drilling (Total Depth)	4-25-52		
Moved in Cable Tools	4-29-52		
Oil String Casing Set	4-27-52		
Plug Back (Final)	None		
Perforations (Final)	5-7-52	Lane Wells Co. KI Dorado, Kansas	
Completed Subsurface Installations (Final)	5-10-52	Bud Edwards Drig. Co., Wichita, Kans.	
Completed Well Head Installations (Final)	5-10-52		
Commenced Bringing in (Final)	4-30-52		
Well Cleaned (Final)	5-10-52		
Commenced Abandonment			
Completed Abandonment			

* Insert the first work started, as; Build Road, Build Board Road and Turn around, Dig Canal, Clear and/or Grade Location, Lay fuel and Water L. Dig Slush Pit, Build Rig Foundation, or, Install Drilling Foundation.

NO. DAYS WATER USED None SOURCE Furnished by Contractor.
 NO. DAYS FUEL USED None KIND _____ SOURCE Furnished by Contractor.
 Measuring Point Will Be Ground Kelly Bushing _____ Kelly Bushing to _____ Surface Csg. None
 Kelly Drive Bushing 6277' - 6343' Elevation 1299' To Gr. Elev. 4' Surface Csg. Flg. None Flange Elev. None

Transfer No. In: 6406 - 6432 CASING, TUBING, & * CEMENTING RECORD Transfer No. Out _____

Size	Weight	Collars & Threads	Kind	Rgs	Jts.	Total Feet Less Threads			Total No. Scratches and Where Placed	Total No. Centralizers and Where Placed
						Put In	Pulled	Left In		
8-5/8"	32#	6 1/2" BV	L.W.	1	1	103'			None	None
8-5/8"	24#	6 1/2" BV	L.W.	1	4					
8-5/8" Casing set at 103', cemented w/85 sacks Regular Portland Cement w/1 sack Calcium Chloride added, 1 1/2" Slurry. Circulated from bottom to top. W.O.C. 2 1/2 hours.										
5-1/2"	15.5#	6-3/4" 8 Rnd.	J-55	2	82	2513'			None	2 - 2319' - 245
5-1/2" Casing set at 2517', cemented w/100 sacks Regular Portland Cement, 1 1/2" Slurry, under 100# pressure. Top of cement not known. W.O.C. 4 1/2 hours.										
2"	4.7#	5" 8 Rnd.	J-55	2	82	2556'				
J-55 88 Tubing										

* Following each string of casing, and using the full width of the sheet, give complete cementing record as follows: Where landed, Amount and kind of cement, Amount and kind of Additives, Stages of Cementing, Cement Tops, Slurry weight per Gal. and WOC Hours.

Give the balance of Well Record by Sections, in the order listed below, carefully following instructions in the Field Manual for each section. Use the reverse side of this sheet and subsequent sheets on Form X-6727. As needed.

- Section 1- Production Tests and Potential Test Date
- Section 2- Formation Summary
- Section 3- Depth Measurements
- Section 4- Drill Stem Tests
- Section 5- Perforating and Squeeze Record
- Section 6- Surveys Performed
- Section 7- Core Record
- Section 8- Bit Record
- Section 9- Acidizing or Other Completion Operation
- Section 10- Summary of Operations
- Section 11- Formation Record
- Section 12- Plugging & Abandonment Record

Lease Name H.A. Koogler Well No. 93 Sheet No. 2 of 4 Sheets

885
 5 1/2 @ 2612 with 100 sacks
 Under Pump @ 2482 - 2508
 Run from Open Hole 2517-88
 Run Open Hole 2589-2628
 Check 2435-45 Sand Road Samples
 Set 5 1/2 Plug @ 2510 (4/22/80)

Get Else bags

RECEIVED
 KANSAS CORPORATION COMMISSION
 DEC 28 2006
 CONSERVATION DIVISION
 WICHITA, KS

SECTION NO. 1 - PRODUCTION DATA:

Single Oil Well Completion - Pumping.

Production test completed on May 15, 1952, in the Viola Limestone and Simpson Sand Formations; Viola Limestone Formation, top - 2483', bottom 2516'; Simpson Sand Formation, top - 2516', bottom - 2545'. Perforated 5-1/2" casing in Viola Limestone formation from 2482' to 2508' w/105 15/32" bullets. Open hole, Simpson Sand Formation, from 2517' to 2558'. Well pumped on 24 hour test at the rate of 35 barrels oil, 3 barrels water, per day. Pump set at 2552' w/1-1/2" Plunger, 2" Tubing, 3/4" Rods. 24" Stroke, 12 s.p.m. Test after acidizing Viola Limestone w/1000 gallons 5% acid. Gravity 32.2 @ 64°. Allowable 100%.

SECTION NO. 2 - FORMATION SUMMARY:

Formation	From	To	Core No.	Ind. & Sp. Log Run No.	Micro Log Run No.	Latero-Log Gamma-Ray & Sp.	Remarks
Viola Limestone	2483'	2516'	1	1	1	1	
Simpson Sand	2516'	2545'	1 & 2	1	1	1	
Shale & Sand	2545'	2548'	2	1	1	1	
Shale, Gray to Green	2548'	2549'	2	1	1	1	
Colomite, Sandy	2549'	2551'	2	1	1	1	
Shale, Sandy, Gray to Green	2551'	2552'	2	1	1	1	
Sand	2552'	2556'	2	1	1	1	
Lost Core	2556'	2558'	2				

SECTION NO. 3 - DEPTH MEASUREMENTS:

	Drillers	Steel Line	Micro Log	Latero-Log Gamma-Ray	Ind. Log	Perf. Line	Pt. Plus or Minus	K.B. to O.L.	Surface Depth
Drilling Depth	2558'		2558'	2558'	2558'			4'	2554'
Casing Seat	2517'							4'	2513'
Total Depth	2558'	2558'						4'	2554'
Wells T.D.						2558'		4'	2554'

SECTION NO. 5 - PERFORATING RECORD:

Formation	Perforations			Size	Kind	Tool Set #
	From	To	No.			
Viola Limestone	2482'	2508'	105	15/32"	Bullets	2508'

SECTION NO. 6 - SURVEYS PERFORMED:

No.	Kind	From	To
1	Schlumberger Micro-Log	1500'	2553'
1	Schlumberger Latero-Log, Gamma-Ray & Sp.	105'	2554'
1	Schlumberger Induction Log & Sp.	1500'	2554'

Mercury-Sun Deviation Surveys:

No.	Depth	Deg. off Vertical
1	500'	1-1/2°
2	1000'	1-1/2°
3	1500'	1°
4	2000'	1-1/4°

SECTION NO. 1 - CORE RECORD:

No.	From	To	Recovered	Description
1	2485'	2525'	40'	Dolomite, with saturation and staining.
	2485'	2505'		Dolomite, with spotted staining.
	2505'	2508'		Dolomite, with saturation and staining.
	2508'	2510'		Dolomite, Sandy, with spotted staining.
	2510'	2515'		Dolomite, Sandy, good stain.
	2515'	2516'		Sand with saturation and staining of oil.
2	2525'	2558'	31'	Sand, with saturation and staining of oil.
	2525'	2529'		Sand, White to Green w/spotted staining of oil.
	2529'	2530'		Sand, with saturation and staining of oil.
	2530'	2536'		Sand, White to Green w/spotted staining of oil.
	2536'	2537'		Siltstone
	2537'	2539'		Shale, Brown, Sandy.
	2539'	2540'		Shale, Sandy, Gray-Green.
	2540'	2544'		Sand, Shaley, Gray to Green.
	2544'	2545'		Shale and Sand.
	2545'	2548'		Shale, Gray to Green.
	2548'	2549'		Dolomite, Sandy.
	2549'	2551'		Shale, Sandy, Gray to Green.
	2551'	2552'		Sand.
	2552'	2556'		Lost Core.
	2556'	2558'		

SECTION NO. 8 - BIT RECORD:

No. Used	Size	Drag or Rock	From	To	No. Ft. Drid.
1	7-7/8"	Rock	105'	720'	615'
2	"	"	720'	1593'	873'
3	"	"	1593'	1905'	312'
4	"	"	1905'	2222'	317'
5	"	"	2222'	2525'	303'
6	"	"	2525'	2558'	33'

SECTION NO. 9 - ACIDIZING AND OTHER COMPLETION OPERATIONS:

Strato-Frac - Simpson Sand Formation - 5-4-52.

Ran 2" U.R. tubing w/Baker Packer set at 2494'. Pumped in 18 barrels oil, pressure up to 1300#, broke down to 900#. Pumping at rate of 1/4 barrels per minute. Pumped in 1500 gallons of Dowell X-500 with 3/4# sand per gallon (1125# sand), pressure 1200#, broke down to 900#. Pumped at rate of 2-1/4 barrels per minute. Flushed with 36 barrels oil, pressure dropped off to vacuum in 1-3/4 minutes after pump shut down. 2 1/2 hour bailing test in Simpson Sand Formation after Strato-Frac, made 2 1/2 bbls. oil, 5 bbls. water. Bailed 36 barrels load oil back.

Acidized - Viola Lime Formation - 5-8-52.

Acidized Viola Lime Formation from 2482' to 2508' thru 105 - 15/32" perforations with 1,000 gallons 15% acid with surface tension reducing agent added, 53 barrels water load, under vacuum. 10 hour bailing test made 2 1/2 gallons fluid per hour, 50% water.

SECTION NO. 10 - SUMMARY OF OPERATIONS:

1. Drilling and Exploratory Operations Performed;

- 4-25-52 Core No. 1
- 4-26-52 Core No. 2
- 4-26-52 Schlumberger Induction and Sp. Log No. 1
- 4-26-52 Schlumberger Latero-Log - Gamma-Ray and Sp. Log No. 1
- 4-26-52-4-27-52 Schlumberger Micro-Log No. 1

SECTION NO. 10 - SUMMARY OF OPERATIONS (CONTINUED):

2. Completion Operations Performed:

4-29-52 - 5-10-52, incl.

Moved in Cable Tools. Moved in, rigged up, bailed hole, drilled out plug, cement to 2517' and cleaned out to bottom at 2558'. Washed hole with 100 gallons acid. 2 1/2 hour bailing test made 90 gallons oil, 30 gallons water. Strato-Praced Simpson Sand Formation as follows; Ran 2" tubing with Baker Packer set at 2494'. Pumped in 18 barrels oil, under 1300# pressure, broke down to 900#. Pumped at rate of 4 barrels per minute. Pumped in 1500 gallons Dowell X-500 with 3/4# sand per gallon (1125# Sand), under 1200# pressure, broke down to 900#. Pumped at rate of 2-1/4 barrels per minute. Flushed with 36 barrels oil, pressure dropped off to vacuum in 1-3/4 minutes after pump shut down. 2 1/2 hour bailing test made 2 1/2 barrels oil, 5 barrels water. Set Lane Wells bridge plug at 2512', perforated 5-1/2" casing from 2482' to 2508' with 105 - 15/32" bullets. 12 hour bailing test in Viola Lime Formation after perforating made 1 1/2 barrels oil. Acidized Viola Lime Formation from 2482' to 2508' with 1000 gallons 15% acid with surface tension reducing agent added and 53 barrels load water, under vacuum, thru 105 - 15/32" perforations. 10 hour bailing test made 2 1/2 gallons fluid per hour, 50% water. Bailed back load water, drilled out plug and cleaned out to bottom. Ran tubing and rods.

SECTION NO. 11 - FORMATION RECORD:

Formation	From	To	Remarks
Surface Hole	0'	105'	
Lime	105'	115'	
Lime and Shale Streaks	115'	110'	
Lime and Shale	110'	525'	
Lime	525'	565'	
Shale	565'	660'	
Shale and Lime Shells	660'	880'	
Shale and Lime	880'	1145'	
Lime and Shale Streaks	1145'	1450'	
Shale and Lime	1450'	1590'	
Lime, Cherty	1590'	1650'	
Lime	1650'	1850'	
Lime and Chert	1850'	1930'	
Shale, Lime Streaks	1930'	1985'	
Lime	1985'	2170'	
Lime, Shale Streaks	2170'	2290'	
Lime	2290'	2485'	Top of Viola Lime @ 2483'
Cored	2485'	2525'	
Dolomite, W/saturation and staining	2485'	2505'	Core No. 1 from 2485' to 2525'.
Dolomite, W/spotted staining	2505'	2508'	
Dolomite, W/saturation and staining	2508'	2510'	
Dolomite, Sandy W/spotted staining	2510'	2515'	
Dolomite, Sandy, good stain	2515'	2516'	Top of Simpson Sand @ 2516'.
Sand W/saturation and staining of oil	2516'	2525'	
Sand W/saturation and staining of oil	2525'	2529'	Core No. 2 from 2525' to 2558'.
Sand, White to Green W/spotted staining of oil	2529'	2530'	
Sand, W/saturation and staining of oil	2530'	2536'	
Sand, White to Green W/spotted staining of oil	2536'	2537'	
Siltstone	2537'	2539'	
Shale, Brown, Sandy	2539'	2540'	
Shale, Sandy Gray, Green	2540'	2544'	
Sand, Shaley, Gray to Green	2544'	2545'	
Shale and Sand	2545'	2548'	
Shale, Gray to Green	2548'	2549'	
Dolomite, Sandy	2549'	2551'	
Shale, Sandy, Gray to Green	2551'	2552'	
Sand	2552'	2556'	
Lost Core	2556'	2558'	
Total Depth	2558'		

RECEIVED
 KANSAS CORPORATION COMMISSION
 DEC 28 2006
 CONSERVATION DIVISION
 WICHITA, KS

CORE DESCRIPTION

Magnolia #93 M. A. Koogler
NE SW NW Section 21-26S-5E

By Owen E. Homeister

Core #1 2485-2525, full recovery

2485-86, dolo., f. sucrose, sat. stn.
86-87, same w/some white chert
87-88, dolo. f. sucrose, sat. stn.
88-89, same
89-90, as above w/consid. white cx., (50%),
sat. stn.
90-91, dolo. as above, some grn argill. mat.
& cx.
91-92, dolo., few small vugs.
92-93, cx., wht, tr. dolo & stn.
93-94, dolo., f. suc., sat. stn, some cx.
94-95, dolo., f. suc., sat. stn, consid.
cx. (50%)
95-96, dolo., f. suc., sat. stn, some cx.
96-97, same
97-98, same w/few small vugs.
98-99, same
99-2500, same w/inc. vug. poros.
2500-01, same
01-02, same w/ex. vug. por.
02-03, same
03-04, same
04-05, same
05-06, dolo., f. suc, vug. por. w/sp. stn
06-07, same
07-08, dolo., f. sucrose, sp. stn, some cx (10%)
08-09, dolo, f. to v. large, v. ex. vug. poros.
w/sat. stn.
09-10, dolo., dense, f. xlyn, no stn, few
sand grns, ss. m. gran, sat. stn.
10-11, sandy dolo., sp. stn.
11-12, same
12-13, same
13-14, same
14-15, same w/inc. stn.
15-16, dolo. ss. good stn.
16-17, ss., sat. stn oil
17-18, same
18-19, ss. some dolo. cem., sat. stn
19-20, same
20-21, same
21-22, ss. w/sat. stn
22-23, same
23-24, same
24-25, same

Core #2, 2525-60, rec. 31'

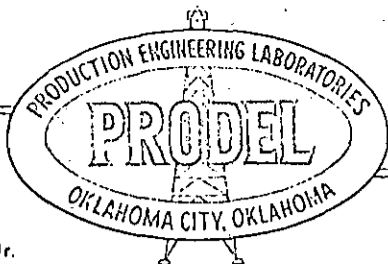
2525-26, ss., f. to m. gran w/sat stn oil.,
grains rounded to subang., friable.
26-27, same
27-28, same
28-29, same
29-30, ss., wht to grn, argill., w/sp. stn
oil.
30-31, ss., med. gran w/sat. stn oil.
31-32, ss., f. gran w/sp. sat. stn oil
32-33, same
33-34, ss., f. to m. gran w/sat. stn oil,
friable.
34-35, same
35-36, same
36-37, ss., wh. to grn, argill., w/sp. stn
37-38, siltstone, glauc. no stn.
38-39, same w/some pyrite
39-40, sandy brn ls. w/glauc. & some sh.
pebbles, Conglomeritic.
40-41, sandy gry-grn waxy shale.
41-42, sh., gry to grn w/abundant red disc
shaped hematite nod. s.
42-43, sh., gry-grn w/abund. yellow to brn
hem. nod. s.
43-44, same
44-45, ss., gry to grn, argill. shaley
45-46, shale & sand
46-47, same
47-48, same
48-49, sh., gry to gry-grn w/phos. pebbles
49-50, sandy dolo., f. xlyn, v. dense
50-51, dolo., gry, f. xlyn w/few scattered
sand grains.
51-52, sandy gry to gry-grn sh.
52-53, ss., f. to m. gran. argill.
53-54, sand, w.some grn sh.
54-55, same
55-56, same

Assumed last 4' lost.

RECEIVED
KANSAS CORPORATION COMMISSION

DEC 28 2006

CONSERVATION DIVISION
WICHITA, KS



Production Engineering Laboratories

815 BRANIFF BLDG., OKLAHOMA CITY, OKLAHOMA
200 N. W. 20th St.

A. ARMSTRONG, Jr.
WARD M. EDINGER

May 14, 1952

File: 03-2750

Re: Core Analysis
Magnolia Petroleum Company
H. A. Koogler #93
El Dorado Field
Butler County, Kansas

Magnolia Petroleum Company
917 First National Building
Wichita, Kansas

Attention: J. R. Puckett

Gentlemen:

The Simpson sand is oil productive where permeable, from 2814 to 2836 feet. This section is summarized at the base of the coregraph with unit recoveries given.

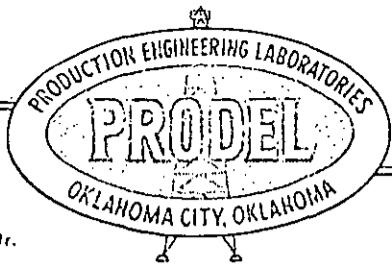
Very truly yours,

PRODUCTION ENGINEERING LABORATORIES, INC.

Ward M. Edinger (ca)
Ward M. Edinger

WME:bc

RECEIVED
KANSAS CORPORATION COMMISSION
DEC 28 2006
CONSERVATION DIVISION
WICHITA, KS



Production Engineering Laboratories

R. A. ARMSTRONG, Jr.
WARD M. EDINGER

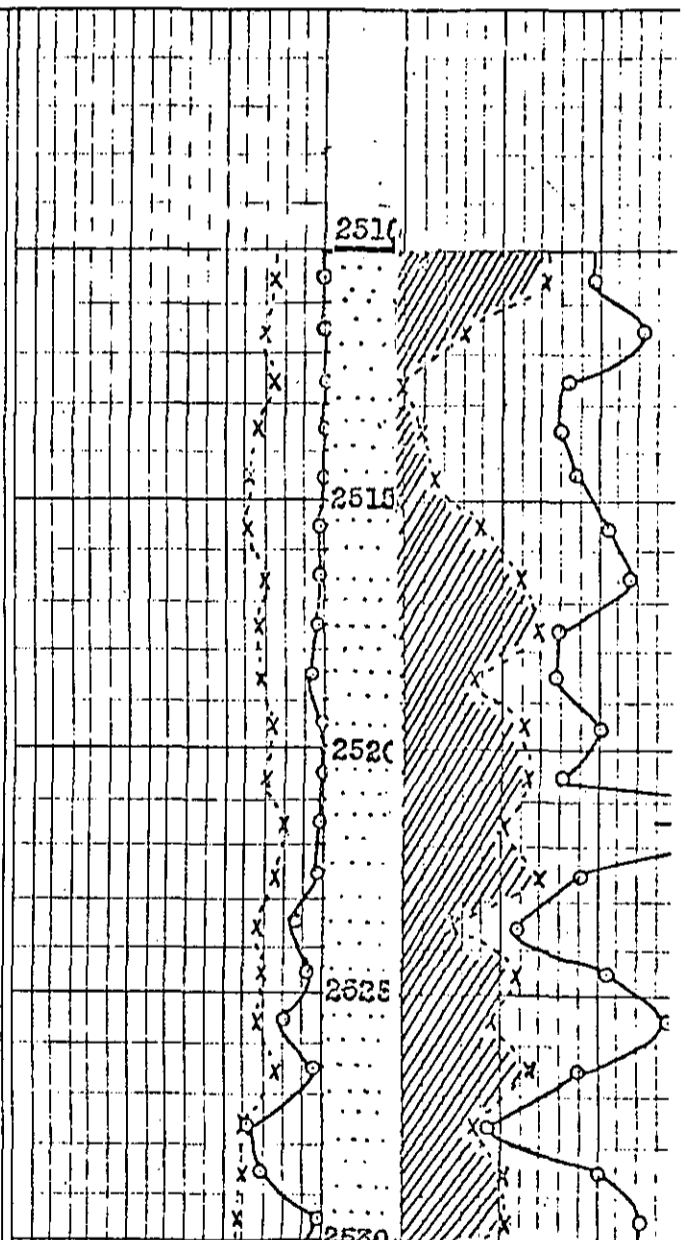
1720 S. W. 30th Avenue... OKLAHOMA CITY 6, OKLAHOMA
209 N. W. 4th St. May 13, 1952

CORE ANALYSIS REPORT

Company Magnolia Petroleum Company Location.....Sec.....Twp.....Rge.....File OC-2750
Well M. A. Koogler #93 Elevation.....Remarks:.....
Field El Dorado Engineers Prodel
County Butler State Kansas Type Core Barrel.....

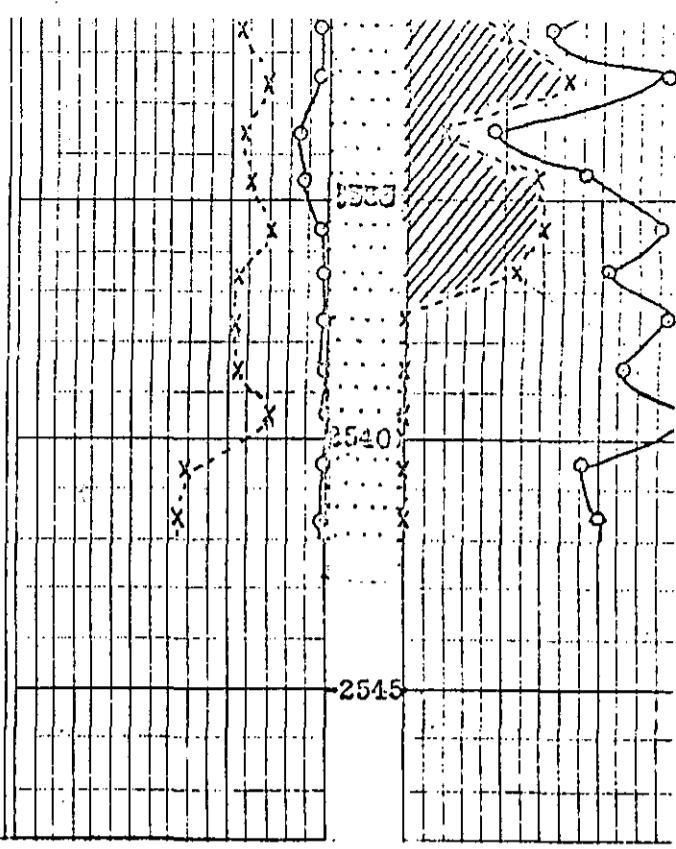
Sample Number	Depth Feet	Permeability Millidarcys	Porosity Percent	Residual Saturation Percent Pore Space		Probable Production	Permeability				Water saturation			Oil saturation		
				Oil	Water		75	50	25	0	0	25	50	0	25	50

Sample Number	Depth Feet	Permeability Millidarcys	Porosity Percent	Residual Saturation Percent Pore Space Oil	Residual Saturation Percent Pore Space Water	Probable Production
Simpson Sand						
1	2510.5	0.0	0.0	10.4	36.5	48.1
2	2511.5	0.0	0.0	12.1	15.7	61.9
3	2512.5	0.0	0.0	10.7	0.0	42.1
4	2513.5	0.0	0.0	13.5	4.4	40.0
5	2514.5	0.5	0.3	14.8	8.1	43.9
6	2515.5	1.0	1.5	15.7	19.1	52.2
7	2516.5	1.3	3.7	12.8	30.5	58.6
8	2517.5	1.8	2.9	13.9	34.5	40.3
9	2518.5	2.6	2.6	12.9	17.8	39.5
10	2519.5	0.9	1.0	10.5	31.4	51.4
11	2520.5	0.7	0.5	11.9	31.9	40.3
12	2521.5	0.4	0.3	8.1	25.0	76.5
13	2522.5	1.0	0.1	9.8	31.7	44.9
14	2523.5	7.8	12.0	13.5	11.9	28.1
15	2524.5	3.3	2.9	12.5	29.6	52.0
16	2525.5	9.0	2.8	12.8	23.4	67.9
17	2526.5	1.6	3.7	9.8	32.7	44.9
18	2527.5	19.	15.	16.5	18.2	21.8
19	2528.5	16.	16.	15.9	25.2	50.0
20	2529.5	1.0	11.	17.1	26.9	60.8



RECEIVED
KANSAS CORPORATION COMMISSION
DEC 28 2006
CONSERVATION DIVISION
WICHITA, KS

22	2531.5	2.6	6.0	18.4	25.5	37.5	Oil
23	2532.5	1.9	5.1	12.1	41.3	66.9	Oil
24	2533.5	7.8	15.0	10.6	9.0	22.9	Oil
25	2534.5	5.9	2.9	16.1	32.9	45.3	Oil
26	2535.5	1.7	5.1	12.3	35.8	65.9	Oil
27	2536.5	0.3	0.7	17.6	27.3	51.1	(2)
28	2537.5	0.1	0.1	18.4	0.0	66.8	None
29	2538.5	0.0	0.0	17.6	0.0	56.8	None
30	2539.5	0.0	0.0	11.9	0.0	72.3	None
31	2540.5	0.5		30.8	0.0	45.1	None
32	2541.5	1.3		32.5	0.0	50.5	None



- (1) See Letter
- (2) Low permeability—non pay

- (3) Transition zone (a) Oil to water
(b) Gas to oil (c) Gas to water
- (4) Oil—not commercially productive

SUMMARY

Formation Name Simpson Depth 2510 to 2541.5 feet Core Recovery _____ Percent
 Productive formation recovered 21 feet Possible productive formation _____ feet

Average of determined values:
 Permeability 10.5 mdcs.
 Porosity 14.0 percent
 Oil saturation 25.4 percent
 Water saturation 47.9 percent
 Connate water 35 percent
 Gravity produced oil _____ °API

Estimated or measured reservoir data used:
 Original solution gas/oil ratio 180 cu. ft./bbl.
 Original formation volume factor 1.15 bbl./bbl.
 Original saturation pressure 700 PSI
 Original bottom hole pressure 1080 PSI

Predicted unit recoverable oil in bbls. per acre foot
 By gas expansion to zero PSI 107
 By complete water drive, pressure maintained 313
 By pattern flooding to 95% water cut _____

- (A) By capillary pressure
- (B) Empirical
- (C) Oil coring data

- (D) From fluid behavior analysis
- (E) Field measurement

- (F) From electric log
- (G) From drilling time
- (H) From production data

Permeability Distribution
 Factor _____
 (Perfect distribution — 1.0)

RECEIVED
 KANSAS CORPORATION COMMISSION
 DEC 28 2006
 CONSERVATION DIVISION
 WICHITA, KS

1301 D.F.
ELEVATION— 1303 N.D.

OPERATOR— Magnolia Petroleum Co
FARM— H.A. Koogler NO. 99
LOCATION— NE SW NW
FOOTAGE
S. T. R. (BUR.) Sec. 21-26S-5E
CO.-PA. Butler
STATE Kansas
AREA El Dorado Field

FORMATION	DEPTH	SUB-SEA	THICK	SOURCE
Lansing	1649	- 346		Schlue. Oil Samples
Kansas City	1983	- 683		"
Skinner sand	2433	-1133		"
No Mississippian rocks apparent				
Viola	2482	-1179		"
Simpson	2516	-1213		"
Total Depth (corrected)	2558	-1255		Drlr.

CASING RECORD—
3 5/8" cas @ 103'
5 1/2" cas @ 2517'
DATE COMMENCED— 4/11/52
DATE COMPLETED— 5/16/52
PRODUCTION FORMATION—
Viola and Simpson
INITIAL PRODUCTION—
P 35 BO & 3 BW, 24 hours.
Gr. 32'

REMARKS—

Top Lansing 1649 -346
Top Kansas City 1983 -683
Top Skinner sd. 2433 -1133

Sp. sat. stn in samples from 2435-45. Recommnd testing before abandoning hole.

No rocks of Mississippian age were recognized in samples.

Top Viola 2482 -1179.

Drilled to 2485, circ. samples showed cherty dolomite w/sat. stn oil.

*Cored 2485-2525, full recovery. 2485-2510, dolo. w/sat. stn oil, 2510-16 sandy dolo w/sp stn of oil, 2516-2525, sandstone w/sat. stn oil.

Top Simpson 2516 -1213

*Cored 2525-60, rec. 31', 2525-40 sandstone w/sat. to sp. sat. stn oil, 2540-50 shale & sandstone, hematite nod. from 2541-42 (Red Rock) 2550-56 shale & ss. w/1' sandy dolo.

Total Depth 2560 = 2558 corrected.

Ran Schlumberger laterolog and Microlog.

5 1/2" cas @ 2517' & cem. w/100 necks

CO to bottom, washed w/100 gals. mud acid. Bailed 4 CO & 1 1/2 GWFH, 2 hours.

Stratafrac w/phr @ 2494, 1500 gals., 1125# sand; broke 1300#, 1200#, 900#, then to vac., flushed w/54 BW. Bailed 36 BLO, short 18 BLO

Bailed 20 BO & 1 BW, 24 hours, inc. 2 bbls. new oil; last 4 hrs. 34 GWFH, no water.

Set plug 2512, perf. 2482-2508 w/105 sh., bailed 24 GWFH, no water, 12 hours.

acidized w/1000 gals., 53 BLW on vac., bailed 24 GWFH, 10 hrs., 50% LW.

Bailed 24 CO & 10 BLWPH, 24 hrs. est 14 BOPD. P 35 BO & 3 BW, 24 hrs. 12 - 24" SPH, gr. 32

RECEIVED
KANSAS CORPORATION COMMISSION

DEC 28 2006

CONSERVATION DIVISION
WICHITA, KS

Lease and Well No. A. S. Hoopler Number 93 Date: 2-1-55

General Product Characteristics

Oil Production 100.0 Bbls/Day
 Water Production 110.0 Bbls/Day
 Pumping Time 25.0 Hrs/Day

Inhibitor Treatment History

Chemical	Date Started	Type of Inhibitor (Batch or Continuous)	Dosage Rate	
			Gals/Day	PPM
<u>Visco 987</u>	<u>6-1-54</u>	<u>Batch</u>	<u>1</u>	

Corrosion Test Coupon Data - Inches Per Year

	<u>Before Treatment</u>	<u>With Present Treatment</u>
Avg. Penetration Rate	<u>N/A</u>	
Pitting Rate		

Cost Data - Dollars

	<u>Before Treatment</u>	<u>After Treatment</u>
Labor & Pulling Machine Expense	<u>60.00</u>	<u>237.00</u>
Rods		<u>1.00</u>
Coupling		
Tubing		
Pump	<u>15.00</u>	<u>20.00</u>
Miscellaneous		
Inhibitor		<u>67.00</u>
Totals	<u>100.00</u>	<u>325.00</u>

Time Interval: From 6-1-53 To 6-1-54 From 6-1-54 To 1-1-55

Cost Per Year 100.00 325.00
 Jobs Per Year 3 5
 Days Off Per Year for Repairs .25 1.4

Estimated Profit or Loss from Inhibitor Treatment, \$/Yr. 110.00 *

REMARKS: * Yearly inhibitor cost only

RECEIVED
 KANSAS CORPORATION COMMISSION
 DEC 28 2006
 CONSERVATION DIVISION
 WICHITA, KS

ACIDIZING RECORDS:

Acidized on March 17, 1955 w/1000 gals 15% acid by Halliburton. Well took acid on vacuum. Flushed w/25 barrels water.

REMEDIAL WORK REPORT

WORK PERFORMED Cleaned Out
BY J. H. Wagner - El Dorado, Kansas
WORK COMMENCED July 30, 1955
WORK COMPLETED August 1, 1955
TOTAL DEPTH 2558'
Measuring PT. Kelly Bushing
ELEVATION 1299'

REMARKS:

Moved in contract cable tools to clean out. Moved in, rigged up, pulled rods and tubing. Tools strung in to 2523'. Washed hole and cleaned out to 2557'. One (1') foot of iron in bottom of hole. Run tubing, rods and put well to pumping. Well Complete.

NOTE: ALL MEASUREMENTS ARE KELLY BUSHING MEASUREMENTS - 2558' K.B.M. equals 2554' G.L.M.

PRODUCTION DATA

Production before cleaning out; 48 barrels oil, 100 barrels water.

Pumping test after cleaning out, completed on August 4, 1955 in the Viola Lime and Simpson Sand Formations: Viola Lime; top, 2483'; bottom, 2516'; Simpson Sand; top, 2516'; bottom, 2545'. Perforations in 5-1/2" casing, in Viola Lime formation, from 2482' to 2508', open hole, Simpson Sand formation from 2517' to 2557'. Well pumped on 24 hour test; rate 56 barrels oil; 84 barrels water. Pump set at 2545' with 1-1/2" plunger, 2" tubing 3/4" rods, 48" stroke, 20 S.P.M. Allowable 100%. Gravity 34.

Contractor's Statement

54 Hrs.	@	9.375	\$506.25
Moving In			133.80
Extra Labor			68.40
			<u>\$708.45</u>

ACIDIZING REPORT

Acidized on December 13, 1955 with 500 gallons 15% acid, through 2" tubing, under vacuum. Tubing flushed with 12 barrels water, casing flushed with 20 barrels water.

Sheet No. 5 of 6 Sheets

Lease Name M. A. KOOGLER Well No. #93

RECEIVED
 KANSAS CORPORATION COMMISSION
 DEC 28 2006
 CONSERVATION DIVISION
 WICHITA, KS

INTEROFFICE CORRESPONDENCE

FROM J.C. Robinson - 11 Feb 55

DATE March 31, 1955

TO Mr. Powell & Nichols, Kansas

SUBJECT: ACIDIZING REPORT - ED FERRARO WELL NO. 93

Dear Sir:

This is to advise that the well listed below was acidized during the month of March 1955.

M.A. KOGLER WELL NO. 93

Acidized on March 17, 1955 with 1000 gallons, 15% acid, by Halliburton. Well took acid on vacuum. Flushed with 25 barrels water.

Yours very truly,

JCR:LMF

DEAL WITH ONLY ONE SUBJECT IN EACH LETTER - WRITE - DO NOT TELEGRAPH OR TELEPHONE EXCEPT IN EMERGENCY

RECEIVED
KANSAS CORPORATION COMMISSION

DEC 28 2006

CONSERVATION DIVISION
WICHITA, KS.

PERFORMANCE REPORT

LEASE NAME

WELL NO.

LOCATION

H.A. Koogler

93

920' FNL, 1650' FNL, NW/4
Section 21, 26S, 5E,
Butler County, Kansas

WORK PERFORMED

BY

WORK COMMENCED

DATE

WORK COMPLET

Cleaned Out

J.H. Wagner
El Dorado, Kansas

July 30, 1955

August 1, 1955

TOTAL DEPTH

MEASURING POINT

ELEVATI

2558'

Kelly Dishing

1299'

REMARKS:

Moved in contract cable tools to clean out. Moved in, rigged up, pulled rods and tubing. Tool strung in to 2523'. Washed hole and cleaned out to 2557'. One (1') foot of iron in bottom of hole. Run tubing, rods and put well to pumping. Well Complete.

NOTE: ALL MEASUREMENTS ARE KELLY PUSHING MEASUREMENTS - 2558' K.B.M. equals 2554' G.L.M.

PRODUCTION DATA

Production before cleaning out; 48 barrels oil, 100 barrels water.

Pumping test after cleaning out, completed on August 4, 1955 in the Viola Lime and Simpson Sand Formations: Viola Lime; top, 2483'; bottom, 2515'; Simpson Sand; top, 2516'; bottom, 2545'. Perforations in 5-1/2" casing, in Viola Lime formation, from 2482' to 2508, open hole, Simpson Sand formation from 2517' to 2557'. Well pumped on 24 hour test; rate 56 barrels oil; 64 barrels water. Pump set at 2545' with 1-1/2" plunger, 2" tubing, 3/4" rods, 48" stroke, 20 S.P.M. Allowable 100%. Gravity 34.

RECEIVED
KANSAS CORPORATION COMMISSION

DEC 28 2006

CONSERVATION DIVISION
WICHITA, KS

C O P Y

January 5, 1956

J.T. Rosenberger - El Dorado, Kansas

W.B. Powers - Wichita, Kansas

ACIDIZING REPORT - EL DORADO DISTRICT

Dear Sir:

This is to advise that the well listed below was acidized during the month of December 1955.

M.A. KOGLER WELL NO. 93

Acidized on December 13, 1955 with 500 gallons 15% acid, through 2" tubing, under vacuum. Tubing flushed with 12 barrels water, casing flushed with 20 barrels water.

Yours very truly,

LW:

②

RECEIVED
KANSAS CORPORATION COMMISSION

DEC 28 2006

CONSERVATION DIVISION
WICHITA, KS

CLASSIFIED AS TIGHT HOLE 4-26-63

cc: 28 Pa... (11-59) Wal...
E.S. Wal...
V.C. Kipatuck

Mobil Oil Company
SUPPLEMENT TO WELL RECORD

X-5070 DATE 5-6-63
LEASE M.A. KOOLER WELL NO. K DISTRICT WICHITA DIVISION DENVER

STATE KANSAS COUNTY OR PARISH BUTLER

REASON FOR WORK DRILL DEEPER TO DEVELOP ARBUCKLE

- WORK OVER
- CLEAN OUT
- RECOMPLETION
- DRILL DEEPER
- REDRILL
- ABANDONMENT

APPROPRIATION NO. DV # 2033 AMOUNT REQUESTED \$ 1000 APPROXIMATE EXPENDITURE \$ 500 ESTIMATED MONTHS TO PAY OUT PRESENT COMPLETION WILL NOT PAY OUT

WORK PERFORMED BY WHITE AND ELLIS DRIG DATE WORK COMMENCED 4-23-63 DATE COMPLETED 4-27-63

PRODUCTION BEFORE 25 BOPD AND 483 BWPD

POTENTIAL TEST AFTER 23 BOPD AND 506 BWPD - NOTE: VIOLA-SIMPSON PRODUCTION

AND CAUSING OF OPEN HOLE RESULTED IN INCONCLUSIVE ARBUCKLE TEST.

PREVIOUS T.D. 2558 P.B.T.D. 2557 MEASURING POINT KELLY BUSHING TO GL-4'

PRESENT T.D. 2593 P.B.T.D. 2593 MEASURING POINT KELLY BUSHING TO GL-4'

PREVIOUS PRODUCING FORMATION (S) AND DEPTH (S) VIOLA PERF. 2482-2508 SIMPSON OPEN HOLE 2517-2538 PRESENT PRODUCING FORMATION (S) AND DEPTH (S) VIOLA PERF. 2482-2508 SIMPSON OPEN HOLE 2517-2538

CHANGE (S) IN CASING RECORD ARBUCKLE OPEN HOLE 2589-2593

SUMMARY OF OPERATIONS

Moved in cable tools and sealed casing. Cleaned out to 2557 KB and drilled deeper to TD 2593 KB. Encountered iron at 2557 and considerable caving of Simpson shale. Top Arbuckle by samples 2589 KB (-1286). Dumped 55 gal 15% acid with 10N de-emulsifying additive opposite. Arbuckle open hole with bailer. Ran rods and tubing and resumed production.

WGIA

Vernon C. Kipatuck

USE REVERSE SIDE IF ADDITIONAL SPACE IS NEEDED

X-5111 made

RECEIVED
KANSAS CORPORATION COMMISSION
DEC 28 2006
CONSERVATION DIVISION
WICHITA, KS

Mobil Oil Company
SUPPLEMENT TO WELL RECORD

X-5070

DATE 11-18-63

LEASE M. A. Koehler	WELL NO. 93	DISTRICT Wichita	DIVISION Denver
------------------------	----------------	---------------------	--------------------

STATE Kansas	COUNTY OR PARISH Butler	<input type="checkbox"/> WORK OVER
-----------------	----------------------------	------------------------------------

REASON FOR WORK Increase Arbuckle production.	<input type="checkbox"/> CLEAN OUT
	<input type="checkbox"/> RECOMPLETION
	<input checked="" type="checkbox"/> DRILL DEEPER
	<input type="checkbox"/> REDRILL
	<input type="checkbox"/> ABANDONMENT

APPROPRIATION NO. DV 2033A	AMOUNT REQUESTED \$ 4,000	APPROXIMATE EXPENDITURE \$ 3,000	ESTIMATED MONTHS TO PAY OUT 5
-------------------------------	------------------------------	-------------------------------------	----------------------------------

WORK PERFORMED BY White & Ellis Drilling Co.	DATE WORK COMMENCED 6-17-63	DATE COMPLETED 6-23-63
---	--------------------------------	---------------------------

PRODUCTION BEFORE
23 B.O.P.D. & 403 B.W.P.D.

POTENTIAL TEST AFTER
30 B.O.P.D. & 381 B.W.P.D.

PREVIOUS T.D. 2593'	P.B.T.D. 2593' NONE	MEASURING POINT (KB) - 4' to 6'
------------------------	------------------------	------------------------------------

PRESENT T.D. 2628'	P.B.T.D. 2628' NONE	MEASURING POINT (KB) - 4' to 6'
-----------------------	------------------------	------------------------------------

PREVIOUS PRODUCING FORMATION(S) AND DEPTH(S) Simp. H. 2517-38', Arb. 2589-2628'	PRESENT PRODUCING FORMATION(S) AND DEPTH(S) V. 1012 2402-2508', Simp. O.H. 2517-38', Arb. O.H. 2589-2628'
--	--

CHANGE(S) IN CASING RECORD
None

SUMMARY OF OPERATIONS
 Moved in cable tools. Cleaned out 2580-93'. Drilled new hole 2593 - 2628', encountered caving and apparently some iron, approx 1050' fluid in hole. Ran Lane Wells, Gamma Ray & Neutron logs. Ran Haliburton 4 1/4" Open Hole packer on 27/8" C) Tub. set @ 2592' w/ perf. @ 2598 & 2603' anchor on Bottom. safety jt. on top of pkr. & Cast Iron Disc on top of 4' handling sub. Spotted 500gal. NE Acid to Bottom of Tub. Broke cast iron disc @ 1100# & treated Arb. zones. Fluid communicated around pkr. w/csg loaded pumped 1/4 Ebl per min. @ 200#. Flushed w/16 Ebl. lease oil. Load 16 Ebl. oil Plus 12 Ebls. acid water. Swabbed 14 Bbls load Oil & 12 Bbls acid Wtr. & 58 Bbls S.W. in 6 1/2 Hrs. Pulled Tub. & pkr. ran tub. & rods P O P.

RECEIVED
KANSAS CORPORATION COMMISSION
DEC 28 2006
CONSERVATION DIVISION
WICHITA, KS