

STATE CORPORATION COMMISSION OF KANSAS
OIL & GAS CONSERVATION DIVISION

WELL COMPLETION OR RECOMPLETION FORM
ACO-1 WELL HISTORY

DESCRIPTION OF WELL AND LEASE

Operator: License # 5050
Name Hummon Corporation
Address 400 One Main Place
City/State/Zip Wichita, Ks. 67202

Purchaser Koch Oil Company
Wichita, KS

Operator Contact Person Wilber Berg
Phone 316/263-8521

Contractor: License # 5148
Name Big-H Drilling, Inc.

Wellsite Geologist Tim Pierce
Phone 316/263-8521

Designate Type of Completion
 New Well Re-Entry Workover
 Oil SWD Temp Abd
 Gas Inj Delayed Comp.
 Dry Other (Core, Water Supply etc.)

If OWWO: old well info as follows:
Operator
Well Name
Comp. Date Old Total Depth

WELL HISTORY

Drilling Method:
 Mud Rotary Air Rotary Cable
8/26/85 9/5/85 9/5/85
Spud Date Date Reached TD Completion Date
5176 5140'
Total Depth PBTD

Amount of Surface Pipe Set and Cemented at 250 feet
Multiple Stage Cementing Collar Used? Yes No
If yes, show depth set...feet
If alternate 2 completion, cement circulated from...feet depth to...w/...SX cmt

API NO. 15-033-20-681-0000

County Comanche

..... NW .. SW .. Sec. 9 .. Twp. 31 S Rge. 18 W East West

..... 1980 Ft North from Southeast Corner of Section
..... 4620 Ft West from Southeast Corner of Section
(Note: Locate well in section plat below)

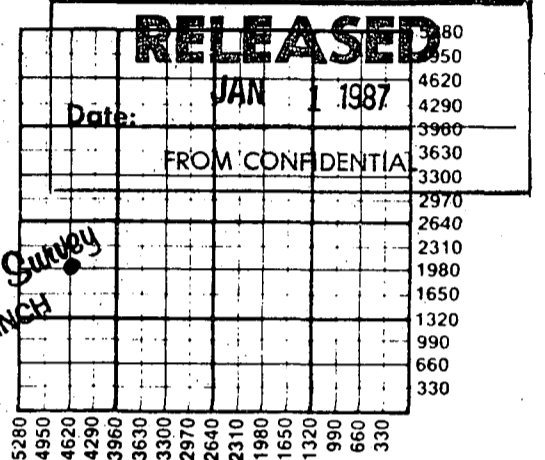
Lease Name Swarner Well # 1

Field Name Wildcat AIFORD

Producing Formation Mississippi

Elevation: Ground 2156 KB 2169

Section Plat



WATER SUPPLY INFORMATION

Disposition of Produced Water: Disposal Repressuring
Docket # CD-98329

Questions on this portion of the ACO-1 call:

Water Resources Board (913) 296-3717
Source of Water:
Division of Water Resources Permit #.....
 Groundwater.....Ft North from Southeast Corner (Well)Ft West from Southeast Corner of Sec Twp Rge East West
 Surface Water.....Ft North from Southeast Corner (Stream, pond etc).....Ft West from Southeast Corner Sec Twp Rge East West
 Other (explain) J & M Water Hauling..... (purchased from city, R.W.D. #)

INSTRUCTIONS: This form shall be completed in duplicate and filed with the Kansas Corporation Commission, 200 Colorado Derby Building, Wichita, Kansas 67202, within 90 days after completion or recompletion of any well. Rule 82-3-130 and 82-3-107 apply.
Information on side two of this form will be held confidential for a period of 12 months if requested in writing and submitted with the form. See rule 82-3-107 for confidentiality in excess of 12 months.
One copy of all wireline logs and drillers time log shall be attached with this form. Submit CP-4 form with all plugged wells. Submit CP-111 form with all temporarily abandoned wells.

All requirements of the statutes, rules and regulations promulgated to regulate the oil and gas industry have been fully complied with and the statements herein are complete and correct to the best of my knowledge.

Signature Wilber D. Berg
Title Wilber D. Berg, Production Supt. Date 10/7/85
Subscribed and sworn to before me this 7th day of October 1985
Notary Public Sandra L. Mendoza
Date Commission Expires February 13, 1986

K.C.C. OFFICE USE ONLY
F Letter of Confidentiality Attached
C Wireline Log Received
C Drillers Time Log Received
Distribution
 KCC SWD/Rep NGPA
 KGS Plug Other (Specify)
RECEIVED
STATE CORPORATION COMMISSION
Form ACO-1 (7-84)

SANDRA L. MENDOZA
FAL. NOTARY PUBLIC
SEDGWICK COUNTY, KANSAS
MY APPT. EXP.

OCT 22 1985
10-22-85
CONSERVATION DIVISION
Wichita, Kansas

Sec. 9
Twp. 31 S
Rge. 18 W

SIDE TWO

Operator Name Hummon Corporation Lease Name Swanier Well # 1

Sec. 9 Twp. 31W Rge. 18 East West County Comanche

WELL LOG

INSTRUCTIONS: Show important tops and base of formations penetrated. Detail all cores. Report all drill stem tests giving interval tested, time tool open and closed, flowing and shut-in pressures, whether shut-in pressure reached static level, hydrostatic pressures, bottom hole temperature, fluid recovery, and flow rates if gas to surface during test. Attach extra sheet if more space is needed. Attach copy of log.

Drill Stem Tests Taken Yes No
 Samples Sent to Geological Survey Yes No
 Cores Taken Yes No

Formation Description
 Log Sample

DST #1: 4930-4935
45/60/45/60 SIP 1695/1663
GTS/15" FP 156/291
 1st open gauged: 385/468
 20" - 29,400 CFG HP 2531/2344
 30" - 35,500 CFG BHT 124°
 40" - 38,600 CFG Chlorides:
 45" - 38,600 CFG 120,000 PPM
 2nd Open gauged:
 10" - 41,600 CFG
 20" - 39,600 CFG
 30" - 33,200 CFG
 40" - 28,000 CFG
 45" - 26,600 CFG
 Rec. 62' G&OCM & 868' Saltwater
 (10% Oil, 30% G, 50% M)
 188' HG&OCWM
 (10% Oil, 50% G, 20% M, 20% W)
 62' HG&OCMW
 (15% Oil, 20% G, 20% M, 45% W)

Name	Top	Bottom
Heebner	4247	-2078
Lansing	4436	-2267
BKC	4863	-2694
Cherokee Sh	5006	-2837
Mississippi	5070	-2901
LTD	5174	

CONFIDENTIAL

CASING RECORD New Used
 Report all strings set-conductor, surface, intermediate, production, etc.

Purpose of String	Size Hole Drilled	Size Casing Set (in O.D.)	Weight Lbs/Ft.	Setting Depth	Type of Cement	#Sacks Used	Type and Percent Additives
surface	17-1/4	13-3/8	54#	250'	common	200	2% gel, 3% CC
production	7-7/8	5-1/2	14#	5175	60/40Poz	100	10% salt, 3/4 of 1% D-31 5# gilsonite

Shots Per Foot	Specify Footage of Each Interval Perforated	Acid, Fracture, Shot, Cement Squeeze Record (Amount and Kind of Material Used)	Depth
4 shots/ft.	5076 - 5088	1000 gals. 15% EE acid	5076-88
		5000 gals. Mod-202, open flush	5076-88
		1000 gals. 50 perf. balls & friction reducer	

TUBING RECORD	Size	Set At	Packer at	Liner Run	<input type="checkbox"/> Yes <input checked="" type="checkbox"/> No
	2-3/8"	5128'	NONE		

Date of First Production: 10/3/85 Producing Method: Flowing Pumping Gas Lift Other (explain).....

Estimated Production Per 24 Hours	Oil	Gas	Water	Gas-Oil Ratio	Gravity
	60 Bbls	MCF	60 Bbls		CFPB

RELEASED
 JAN 22 1987

FROM CONFIDENTIAL

METHOD OF COMPLETION

Production Interval

Disposition of gas: Vented Open Hole Perforation
 Sold Other (Specify) 5076 - 5088'
 Used on Lease Dually Completed
 Commingled

-continued-

DST #2: 5075-5090

45/60/60/120

GTS/ 6"

1st open gauged:

10" - 86,300 CFG

20" - 86,300 CFG

30" - 86,300 CFG

40" - 86,300 CFG

45" - 86,300 CFG

2nd open gauged:

10" - 125,000 CFG

20" - 101,000 CFG

30" - 86,300 CFG

40" - 81,800 CFG

50" - 81,800 CFG

60" - 81,800 CFG

Rec 200' free oil, 125' froggy oil

Sip 1433/1454
FP 104/104 104/104
HP 2586/2554
BHT 122°

CONFIDENTIAL

DST #3: 5101-5123

30/45/15/30

WB throughout

Rec. 30' SO spotted mud

65' MW

CHL 110,000 PPM

SIP 1246/935
FP 83/72 83/83
HP 2628/2502
BHT 120°

DST #4: 5126-5140

60/60/30/60

Rec 125' SOCM

(5% Oil)

250' Water

CHL 93,000 PPM

SIP 1433/1433
FP 83/104 187/187
HP 2628/2554
BHT 124°

NOV 26 1985

State Geological Survey
WICHITA BRANCH

RECEIVED
STATE CORPORATION COMMISSION

OCT 22 1985
10-22-85
CONSERVATION DIVISION
Wichita, Kansas

RELEASED

JAN 22 1987

FROM CONFIDENTIAL