

AFFIDAVIT AND COMPLETION FORM

ACO-1

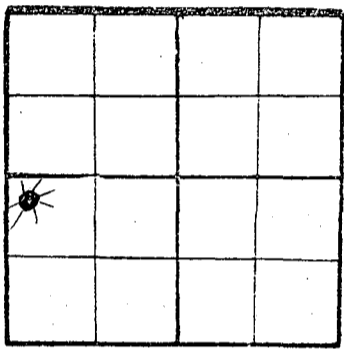
This form must be filed in triplicate with the Kansas Corporation Commission, 200 Colorado Derby Building, Wichita, Kansas 67202, within five days after the completion of the well, regardless of how the well was completed. Circle one: Oil, gas, dry, SWD, OWWO, injection. Please type. Complete ALL sections. Applications must be filed for dual completion, commingling, salt water disposal and injection. Attach wireline logs (i.e. electrical log, sonic log, gamma ray neutron log, etc.) KCC#-(316) 263-3238.

OPERATOR TXO Production Corp. API NO. 15-007-21,151-0000
 ADDRESS 200 W. Douglas, Ste. 300, Wichita, KS COUNTY Barber County
 FIELD Aetna
 **CONTACT PERSON Harold R. Trapp LEASE Z-Bar Cattle Co.
 PHONE 265-9441

PURCHASER Delhi WELL NO. Z-Bar Cattle Co. "B" #1
 ADDRESS 2150 Fidelity Union Tower WELL LOCATION _____
Dallas, TX 75201 2310 Ft. from South Line and
 330 Ft. from West Line of
 the 2 SEC. 35S TWP. 15W RGE.

DRILLING CONTRACTOR Freeman, Rig #1
 ADDRESS 251 N. Water
Wichita, KS 67202

PLUGGING CONTRACTOR N/A
 ADDRESS N/A
 TOTAL DEPTH 4970 PBTD 4947
 SPUD DATE 5-1-81 DATE COMPLETED 10-28-81
 ELEV: GR 1538 DF KB 1550



WELL PLAT
 (XXXXX)
 or (Full)
 Section -
 Please
 indicate.

KCC ✓
 KGS ✓
 PLUG ✓

DRILLED WITH (CABLE) (ROTARY) (AIR) TOOLS
 Report of all strings set - surface, intermediate, production, etc. (New)/(Used) casing.

Purpose of string	Size hole drilled	Size casing set (in O.D.)	Weight lbs./ft.	Setting depth	Type cement	Sacks	Type and percent additives
Conductor		16"		60'			
Surface		8-5/8"	24#	416'		250	
Production		4-1/2"	10.5#	4972'		200	Class "H"

LINER RECORD			PERFORATION RECORD		
Top, ft.	Bottom, ft.	Sacks cement	Shots per ft.	Size & type	Depth interval
N/A	N/A	N/A	2 JSPF (17 h.)		4910-18'
TUBING RECORD			2 JSPF (13 h.)		4902-08'
Size	Setting depth	Packer set at			
2-3/8"	4881	4860			

ACID, FRACTURE, SHOT, CEMENT SQUEEZE RECORD	
Amount and kind of material used	Depth interval treated
Treated w/1800 gals 15% DeMud	4910-18, 4902-08
Fraced w/250 sxs 20-40 sd + 150 sxs 10-20 sd in 70-qual. N2 foam	

RECEIVED
 STATE CORPORATION COMMISSION
 11-17-81
 NOV 17 1981

TEST DATE: <u>6-12-81</u>	PRODUCTION FORMATION: <u>Mississippi</u>
Date of first production	Producing method (flowing, pumping, gas lift, etc.)
<u>6-12-81</u>	<u>flowing</u>
RATE OF PRODUCTION PER 24 HOURS	Gas-oil ratio
Oil <u>95.19</u> bbls. Gas <u>18.0</u> MCF Water <u>33</u> BW	<u>N/A</u> Gravity
Disposition of gas (vented, used on lease or sold)	Producing interval(s)
<u>gas well sold</u>	<u>4910-18, 4902-08</u>

** The person who can be reached by phone regarding any questions concerning this information.
 A witnessed initial test by the Commission is required if the well produces more than 25 BOPD or is located in a Basic Order Pool.

FIELD: Aetna

Name of lowest fresh water producing stratum Unknown Depth N/
 Estimated height of cement behind pipe Circulated to surface

WELL LOG

Show all important zones of porosity and contents thereof; cored intervals, and all drill-stem tests, including depth interval tested, cushion used, time tool open, flowing and shut-in pressures, and recoveries.

SHOW GEOLOGICAL MARKERS, LOGS RUN, OR OTHER DESCRIPTIVE INFORMATION.

FORMATION DESCRIPTION, CONTENTS, ETC.	TOP	BOTTOM	NAME	DEPTH
<u>LOG TOPS</u>				
Herington	2097	-547		
Towanda	2168	-618		
Florence	2274	-724		
Cottonwood	2666	-1116		
Onaga Sh	2976	-1426		
Wabaunsee	3030	-1480		
Topeka	3366	-1816		
Heebner	3985	-2435		
Douglas	4016	-2466		
Lansing	4168	-2818		
Hertha	4662	-3112		
B/Kansas City	4688	-3138		
Marm.	4729	-3179		
Pawnee	4777	-3227		
Cherokee	4834	-3288		
Miss.	4902	-3352		
RTD	4970			
LTD	4973			
PBD	4947			
Ran O.H. Logs				
No DSTs.				

USE ADDITIONAL SHEETS, IF NECESSARY, TO COMPLETE WELL RECORD.

A F F I D A V I T

STATE OF KANSAS, COUNTY OF SEDGWICK SS,

Harold R. Trapp OF LAWFUL AGE, BEING FIRST DULY SWORN UPON HIS OATH, DEPOSES AND SAYS:

THAT HE IS District Geologist FOR TXO PRODUCTION CORP. OPERATOR OF THE Z-Bar Cattle Co. "B" #1 LEASE, AND IS DULY AUTHORIZED TO MAKE THIS AFFIDAVIT FOR AND ON BEHALF OF SAID OPERATOR, THAT WELL NO. "B" #1 ON SAID LEASE HAS BEEN COMPLETED AS OF THE 28th DAY OF October 19 81, AND THAT ALL INFORMATION ENTERED HEREIN WITH RESPECT TO SAID WELL IS TRUE AND CORRECT.

FURTHER AFFIANT SAITH NOT.

(S) Harold R. Trapp

SUBSCRIBED AND SWORN TO BEFORE ME THIS 10th DAY OF November 1981

PAMELA S. JOLLIFF

STATEWIDE
 NOTARY PUBLIC
 Harvey County, Ks.

My Appt. Expires 9/14/83

MY COMMISSION EXPIRES: 9/14/83

Pamela S. Joliff
 NOTARY PUBLIC