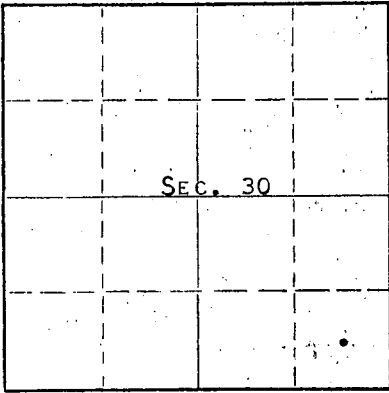


WELL PLUGGING RECORD

Give All Information Completely
Make Required Affidavit
Mail or Deliver Report to:
Conservation Division
State Corporation Commission
211 No. Broadway
Wichita, Kansas

NORTH



Locate well correctly on above Section Plat

RICE County, Sec. 30 Twp. 19s Rge. 8w ~~XE~~ (W)
Location as "NE/CNW/SW" or footage from lines APP. C SE NE
Lease Owner PETROLEUM, INC.,
Lease Name WHARTON Well No. 1
Office Address ROUTE 2, GREAT BEND, KANSAS
Character of Well (completed as Oil, Gas or Dry Hole) DRY HOLE
Date well completed AUGUST 16, 19 63
Application for plugging filed AUGUST 16, 19 63
Application for plugging approved AUGUST 16, 19 63
Plugging commenced AUGUST 16, 19 63
Plugging completed AUGUST 16, 19 63
Reason for abandonment of well or producing formation NO PRODUCIBLE FORMATIONS

If a producing well is abandoned, date of last production NONE 19
Was permission obtained from the Conservation Division or its agents before plugging was commenced? YES

Name of Conservation Agent who supervised plugging of this well GILBERT TOMAN
Producing formation - - Depth to top - - Bottom - - Total Depth of Well 3452 Feet
Show depth and thickness of all water, oil and gas formations.

OIL, GAS OR WATER RECORDS

CASING RECORD

FORMATION	CONTENT	FROM	TO	SIZE	PUT IN	PULLED OUT
				8-5/8"	217'	NONE

Describe in detail the manner in which the well was plugged, indicating where the mud fluid was placed and the method or methods used in introducing it into the hole. If cement or other plugs were used, state the character of same and depth placed, from _____ feet to _____ feet for each plug set.

MUDDED UP WITH HEAVY MUD TO 210', FOLLOWED BY WOODEN PLUG AND 1/4 SACK HULLS. PLACED 20 SACKS CEMENT THROUGH DRILL PIPE ONTO HULLS. MUDDED UP WITH HEAVY MUD TO 40', FOLLOWED BY WOODEN PLUG, 1/4 SACK HULLS AND 10 SACKS CEMENT TO BASE OF WELL CELLAR. PLACED 2 SACKS CEMENT IN RAT HOLE.

RECEIVED
STATE CORPORATION COMMISSION

AUG 23 1963

CONSERVATION DIVISION
Wichita, Kansas

(If additional description is necessary, use BACK of this sheet)

Name of Plugging Contractor GARVEY DRILLING COMPANY
Address ROUTE 2, GREAT BEND, KANSAS

STATE OF KANSAS, COUNTY OF BARTON, ss.
DON SEARLE (employee of owner) or (owner or operator) of the above-described well, being first duly sworn on oath, says: That I have knowledge of the facts, statements, and matters herein contained and the log of the above-described well as filed and that the same are true and correct. So help me God. DON SEARLE, DIST. PROD. SUPT.

(Signature) *Don Searle*
ROUTE 2, GREAT BEND, KANSAS
(Address)

SUBSCRIBED AND SWORN TO before me this 21ST day of AUGUST, 19 63

My commission expires APRIL 14, 1967

Arthur J. Wiles
Notary Public.

WELL LOG

COMPANY Petroleum Inc.

SEC. 30 T. 19S R. 8W

FARM Wharton

NO. 1

LOC. App. SE NE

TOTAL DEPTH 3452'

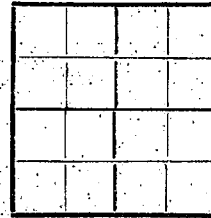
COUNTY Rice

COMM. 8-9-63

COMP. 8-16-63

CONTRACTOR Garvey Drilling Company

CASING 8 5/8" @ 217' w/ 190 sx



ELEVATION 1682' D.F.

PRODUCTION D & A

FIGURES INDICATE BOTTOM OF FORMATIONS

- 100' Clay and Sand
- 217' Shale and Clay
- 730' Red Bed and Shale
- 750' Anhydrite
- 1375' Shale and Shells
- 1630' Lime and Shale
- 1870' Lime and Shale Streaks
- 2220' Shale and Shells
- 2500' Shale and Lime
- 2740' Lime
- 2877' Lime and Shale
- 3180' Lime
- 3250' Lime and Shale
- 3321' Kinderhook
- 3333' Viola Lime
- 3383' Lime
- 3440' Sand and Shale
- 3452' Arbuckle Lime
- 3452' RTD

RECEIVED
STATE CORPORATION COMMISSION

AUG 23 1963

CONSERVATION DIVISION
Wichita, Kansas

State of Kansas } ss

County of Barton }

I, Sam N. Stephens of Garvey Drilling Company

upon oath state the above and foregoing is a true and correct copy of the log of the Wharton #1 well.

Subscribed and sworn to before me this 20th day of August 19 63

My Commission Expires: April 14th, 1967

NOTARY PUBLIC