

TYPE

NOTICE OF INTENTION TO DRILL

C-1

TO BE FILED WITH THE STATE CORPORATION COMMISSION
PRIOR TO COMMENCEMENT OF WELL

API Number 15-135-21, 1080000
(For office use only)

1. Operator Cameron K. Reed

Starting Date Nov. 17, 1975

Address 11 1/2 E. Main, Chanute, Kansas 66720

County Ness

2. Contractor Strata Drilling Co.

Sec 34 Twp 17 S Rge 25 ^W

Address Great Bend, Kansas

Spot Location NW SW NW

3. Type of Equipment: Rotary X Cable Tool _____

Nearest Lease Line 330 ft.

4. Well to be Drilled for: Oil X Gas _____

Lease Name Reed

Disposal _____ Input _____ Other _____

5. Depth of Deepest Fresh Water within 1 mile 100 ft.

Well No. 2

6. Depth of Municipal Water Well within 3 miles None ft.

7. Depth to Protect all Fresh Water 250 ft.

Est. Total Depth 14300 ft.

8. Amount of Surface Casing to be set 325 ft.

9. Alternate No. 1 X No. 2 X

REMARKS:

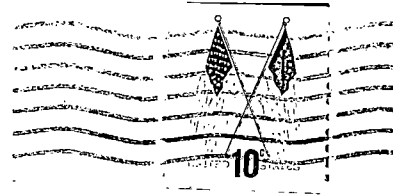
OPERATOR STATES THAT HE WILL COMPLY WITH K. S. A. 55-128

Signature of Operator *Cameron K. Reed*

Production Supt.

CK/BSW





State Corporation Commission of Kansas
Conservation Division
P. O. Box 17027
Wichita, Kansas 67217

RECEIVED
STATE CORPORATION COMMISSION

OCT 16 1975
10-16-75
CONSERVATION DIVISION
WICHITA, KANSAS

(IF PREFERRED, MAIL IN ENVELOPE)