

ORIGINAL

STATE CORPORATION COMMISSION OF KANSAS  
OIL & GAS CONSERVATION DIVISION  
WELL COMPLETION FORM  
ACO-1 WELL HISTORY  
DESCRIPTION OF WELL AND LEASE

API No. 15- 033-20966-0000

County COMANCHE

- NW - SE - SE Sec. 36 Twp. 32S Rge. 19 X W

Operator: License # 3882

Name: SAMUEL GARY JR. & ASSOCIATES, INC.

Address 1670 BROADWAY

SUITE 3300

City/State/Zip DENVER, CO 80202-4838

Purchaser: KGS

Operator Contact Person: TOM FERTAL

Phone (303) 831-4673

Contractor: Name: DUKE DRILLING CO., INC.

License: 5929

Wellsite Geologist: DALE PADGETT

Designate Type of Completion  
 New Well  Re-Entry  Workover

Oil  SWD  SLOW  Temp. Abd.  
 Gas  ENHR  SIGW  
 Dry  Other (Core, WSW, Expl., Cathodic, etc.)

If Workover/Re-Entry: Oil well info as follows:

Operator: \_\_\_\_\_

Well Name: \_\_\_\_\_

Comp. Date \_\_\_\_\_ Old Total Depth \_\_\_\_\_

Deepening  Re-Perf.  Conv. To Inj/SWD  
 Plug Back  PBTB  
 Commingled  Docket No. \_\_\_\_\_  
 Dual Completion  Docket No. \_\_\_\_\_  
 Other (SWD or Inj?)  Docket No. \_\_\_\_\_

7/29/98 8/11/98 8/27/98  
Spud Date Date Reached TD Completion Date

CONFIDENTIAL

STATE CORPORATION COMMISSION  
OIL & GAS CONSERVATION DIVISION  
Wichita, Kansas  
RECEIVED  
11-23-98  
NOV 23 1998

KCC

NOV 18 1998  
CONFIDENTIAL

1100 Feet from South Line of Section

1150 Feet from East Line of Section

Footages calculated from nearest outside section corner: SE

Lease Name CARY Well # 36-16

Field Name Colter

Producing Formation MARMATON (FT SCOTT & PAWNEE)

Elevation: Ground 2063 KB 2076

Total Depth 5940 PBTB 5896

Amount of Surface Pipe Set and Cemented at 619 Feet

Multiple Stage Cementing Collar Used?  Yes  No

If yes, show depth set \_\_\_\_\_ Feet

If Alternate II completion, cement circulated from \_\_\_\_\_

feet depth to \_\_\_\_\_ w/ \_\_\_\_\_ sx cmt.

Drilling Fluid Management Plan Alt 1, 1-6-99 U.C.  
(Data must be collected from the Reserve Pit)

Chloride content 6000 ppm Fluid Volume 4800 bbls

Dewatering method used HAULED FREE WATER TO DISPOSAL

Location of fluid disposal if hauled offsite: UNKNOWN

Operator Name DELCO FLUID SERVICE

Lease Name \_\_\_\_\_

\_\_\_\_\_ Quarter Sec. \_\_\_\_\_ Twp. \_\_\_\_\_ Rng. \_\_\_\_\_ W

County \_\_\_\_\_ Docket No. \_\_\_\_\_

INSTRUCTIONS: An original and two copies of this information shall be filed with the Kansas Corporation Commission, 130 South Market, Room 2078, Wichita, Kansas 67202, within 120 days of the spud date, recompletion, workover or conversion of a well. Rule 82-3-130, 82-3-196 and 82-3-107 apply. Information on side two of this form will be held confidential for a period of 12 months if requested in writing and submitted with the form (see rule 82-3-107 for confidentiality in excess of 12 months). One copy of all wireline logs and geological well report shall be attached with this form. ALL CEMENTING TICKETS MUST BE ATTACHED. Submit CP-4 with all plugged wells. Submit CP-111 form with all temporarily abandoned wells.

All requirements of the statutes, rules and regulations promulgated to regulate the oil and gas industry have been fully complied with an the statements herein are complete and correct to the best of my knowledge.

Signature Thomas J Fertal

Title Sr. Geologist Date Nov. 18, 1998

Subscribed and sworn to before me this 18th day of November 1998.

Notary Public Clemis & Shea

Date Commission Expires 3-24-2002

K.C.C. OFFICE USE ONLY  
F  Letter of Confidentiality Attached  
C  Wireline Log Received  
C  Geologist Report Received  
Distribution  
KCC SWD/Rep NGPA  
KGS Plug Other (Specify)  
RELEASED  
MAY 08 2001

15-033-20966-0000

ORIGINAL

Operator Name SAMUEL GARY JR. & ASSOCIATES, INC.

Lease Name CARY

Well# 36-16

Sec. 36 Twp. 32S Rge. 19  East  West

County COMANCHE

Instructions: Show important tops and base of formation penetrated. Detail all cores. Report all drill stem tests giving interval tested, time tool open and closed, flowing and shut-in pressures, whether shut-in pressure reached static level, hydrostatic pressures, bottom hole temperature, fluid recovery, and flow rates if gas to surface during test. Attach extra sheet if more space is needed. Attach copy of log.

Drill Stem Tests Taken (Attach Additional Sheets.)	<input checked="" type="checkbox"/> Yes	<input type="checkbox"/> No	<input checked="" type="checkbox"/> Log	Formation (Top), Depth and Datum	<input type="checkbox"/> Sample Datum
Sample Sent to Geological Survey	<input checked="" type="checkbox"/> Yes	<input type="checkbox"/> No		Name	Top
Cores Taken	<input type="checkbox"/> Yes	<input checked="" type="checkbox"/> No		STONE CORRAL	1050
Electric Log Run (Submit Copy.)	<input checked="" type="checkbox"/> Yes	<input type="checkbox"/> No		WABAUNSEE	3456
List all E. Logs Run:	DUAL INDUCTION			BASE HEEBNER SHALE	4321
	COMP NEUTRON DENSITY			LANSING	4500
	SONIC LOG			MARMATON	5038
	MICRO LOG			CHEROKEE SHAL	5136
				TOP MISSISSIPPI	5203
				OSAGE	5457
				VIOLA	5858
				TD	5944

RECEIVED  
STATE CORPORATION COMMISSION  
NOV 23 1998  
11-23-98  
CONSERVATION DIVISION  
L.H. Smith, Kansas

CONFIDENTIAL

KCC

CASING RECORD  New  Used

NOV 18 1998

Report all strings set - conductor, surface, intermediate, production, etc.

CONFIDENTIAL

Purpose of string	Size Hole Drilled	Size Casing Set (in O.D.)	Weight Lbs./Ft.	Setting Depth	Type of Cement	# Sacks Used	Type and Percent Additives
CONDUCTOR		20"		54	GROUT	5-1/2 YD	
SURFACE	12-1/4	8-5/8	24	619	CLASS A & MIDCON II	470	3% CC, 1/4#/SK FLOCELE
PRODUCTION	7-7/8	5-1/2	15.5	5941	MIDCON II	195	2% CC, 5#/SK GILSONITE

ADDITIONAL CEMENTING/SQUEEZE RECORD

Purpose:	Depth		Type of Cement	# Sacks Used	Type and Percent Additives
	Top	Bottom			
<input type="checkbox"/> Perforate					
<input type="checkbox"/> Protect Casing					
<input type="checkbox"/> Plug Back TD					
<input type="checkbox"/> Plug Off Zone					

Shots per Foot	PERFORATION RECORD - Bridge Plugs Set/Type Specify Footage of Each Interval Perforated	Acid. Fracture, Shot, Cement, Squeeze Record (Amount and Kind of Material Used)	
		Amount and Kind of Material Used	Depth
4	5132-35, 5102-14	1500 GAL 15% MCA	

TUBING RECORD		Size	Set At	Packer At	Liner Run			
		2-3/8	5130		<input type="checkbox"/> Yes <input checked="" type="checkbox"/> No			
Date of First, Resumed Production, SWD or Inj.		Producing Method						
9/29/98		<input checked="" type="checkbox"/> Flowing <input type="checkbox"/> Pumping <input type="checkbox"/> Gas Lift <input type="checkbox"/> Other (Explain)						
Estimated Production Per 24 Hours	Oil	Bbls.	Gas	Mcf	Water	Bbls.	Gas-Oil Ratio	Gravity
	TRACE		200		1			

Disposition of Gas:  Vented  Sold  Used on Lease (If vented, submit ACO-18).

METHOD OF COMPLETION:  Open Hole  Perf.  Dually Comp.  Commingled

Production Interval: 5132-35 to 5102-14

RELEASED

MAY 08 2001

FROM CONFIDENTIAL

CONFIDENTIAL

ORIGINAL

TRILOBITE TESTING L.L.C.

OPERATOR : Samuel Gary DATE 8-6-98  
 WELL NAME: Cary "36-16" KB 2076.00 ft TICKET NO: 10764 DST #1  
 LOCATION : 36-32S-19W Comanche co KS GR 2063.00 ft FORMATION: Fort Scott  
 INTERVAL : 5097.00 To 5135.00 ft TD 5135.00 ft TEST TYPE: CONVENTIONAL

RECORDER DATA

Mins	Field	1	2	3	4	TIME DATA-----
PF 10 Rec.	13630	13630	Alpine			PF Fr. 2200 to 2210 hr
SI 90 Range(Psi )	4625.0	4625.0	5000.0	0.0	0.0	IS Fr. 2210 to 2340 hr
SF 90 Clock(hrs)	12 HR	12 HR	12 HR			SF Fr. 2340 to 0110 hr
FS 180 Depth(ft )	5132.0	5132.0	5099.0	0.0	0.0	FS Fr. 0110 to 0410 hr

	Field	1	2	3	4	
A. Init Hydro	2460.0	2477.0	2404.0	0.0	0.0	T STARTED 2015 hr
B. First Flow	176.0	185.0	22.0	0.0	0.0	T ON BOTM 2156 hr
B1. Final Flow	165.0	161.0	27.0	0.0	0.0	T OPEN 2200 hr
C. In Shut-in	1717.0	1714.0	1690.0	0.0	0.0	T PULLED 0410 hr
D. Init Flow	142.0	139.0	24.0	0.0	0.0	T OUT 0730 hr
E. Final Flow	126.0	126.0	38.0	0.0	0.0	
F. Fl Shut-in	1713.0	1706.0	1680.0	0.0	0.0	TOOL DATA-----
G. Final Hydro	2389.0	2392.0	2364.0	0.0	0.0	Tool Wt. 1800:00 lbs
Inside/Outside	I	I	O			Wt Set On Packer 22000.00 lbs

RECOVERY

Tot Fluid 60.00 ft of 60.00 ft in DC and 0.00 ft in DP  
 5026.00 ft of Gas in pipe  
 60.00 ft of Mud 100% mud  
 0.00 ft of  
 0.00 ft of  
 0.00 ft of  
 0.00 ft of  
 0.00 ft of  
 0.00 ft of  
 SALINITY 11000.00 P.P.M. A.P.I. Gravity 0.00

RECEIVED  
 STAFF COORDINATION COMMISSION  
 NOV 23 1998  
 CONSERVATION DIVISION  
 Wichita, Kansas

TOOL DATA-----  
 Tool Wt. 1800:00 lbs  
 Wt Set On Packer 22000.00 lbs  
 Wt Pulled Loose 15000.00 lbs  
 Initial Str Wt 90000.00 lbs  
 Unseated Str Wt 90000.00 lbs  
 Bot Choke 0.75 in  
 Hole Size 7.78 in  
 D Col. ID 2.25 in  
 D. Pipe ID 3.80 in  
 D.C. Length 350.00 ft  
 D.P. Length 4736.00 ft

BLOW DESCRIPTION

Initial Flow:  
 Strong, off bottom of bucket in 45 secs  
 cracked 2" slightly  
 Initial Shut-in:  
 No blow-back.  
 Final Flow:  
 Strong, off bottom of bucket  
 immediately Gas to surface in 13 mins.  
 Final Shut-in:  
 No blow-back.

KCC  
 NOV 18 1998  
 CONFIDENTIAL

MUD DATA-----  
 Mud Type Chemical  
 Weight 9.20 lb/cf  
 Vis. 50.00 S/L  
 W.L. 9.00 in3  
 F.C. 0.00 in  
 Mud Drop Y 10.0 ft  
 Amt. of fill 0.00 ft  
 Btm. H. Temp. 118.00 F  
 Hole Condition Good  
 % Porosity 6.00  
 Packer Size 6.75 in  
 No. of Packers 2  
 Cushion Amt. 0.00  
 Cushion Type  
 Reversed Out N.  
 Tool Chased N  
 Tester Lanny Saloga  
 Co. Rep. Dale Padgett  
 Contr. Duke  
 Rig # 7  
 Unit #  
 Pump #

Test Successful: Y

RELEASED

MAY 08 2001  
 FROM CONFIDENTIAL

GAS RECOVERY

ORIGINAL

CONFIDENTIAL

COMPANY: Samuel Gary DATE: 8-6-98  
WELL NAME: Cary "36-16" KB Elev: 2076.00 ft TICKET #10764 DST #1  
WELL LOCATION: 36-32S-19W Comanche co KS GR Elev: 2063.00 ft FORMATION: Fort. Scott  
INTERVAL Fr.: 5097.00 To 5135.00 T.D.: 5135.00 ft TEST TYPE: CONVENTIONAL

GAS RECOVERY MEASURED WITH Merla Orifice

\*\*\*\*\* GAS RATES FOR FLOW #2

Time (min)	Orifice (in)	Pressure (Psi)	H2O (in)	Rate (cf/d)
15	0.50	0	9	18800.0
20	0.50	0	12	21900.0
30	0.50	0	17	25800.0
40	0.50	0	22	29400.0
50	0.50	0	26	31900.0
60	0.50	0	30	34300.0
70	0.50	0	34	36500.0
80	0.50	0	38	38600.0
90	0.75	0	9	42500.0

KCC  
NOV 18 1993  
CONFIDENTIAL

CONSERVATION DIVISION  
Wichita, Kansas

NOV 23 1993

STATE OPERATIONAL CONSERVATION  
RECEIVED

RELEASED  
MAY 08 2001  
FROM CONFIDENTIAL

ORIGINAL

CONFIDENTIAL

NATURAL GAS ANALYSIS REPORT

Sampled by:  
 Trilobite Testing, L. L. C.  
 Hays, Kansas  
 Scott City, Kansas  
 Phone: 800-728-5369  
 Fax: 913-625-5620

Analyzed by:  
 Caraway Analytical, Inc  
 P. O. Box 2137  
 Liberal, Kansas 67905  
 Phone: 316-624-5389  
 Fax: 316-626-7108

Lab Number:	983014	Analyzed:	08/09/98
Sample From:	Cary 36-16 DST 1	Pressure:	
Producer:	Samuel Gary Jr. & Assoc	Temperature:	
Date:		Location:	36-32-19
Time:		County:	Comanche
Sampler:		State:	Kansas
Source:		Formation:	Ft. Scott

		Mole %	GPM
Helium	He:	0.118	0.000
Hydrogen	H2:	0.007	0.000
Oxygen	O2:	0.000	0.000
Nitrogen	N2:	2.590	0.000
Carbon Dioxide	CO2:	0.043	0.000
Methane	C1:	86.721	0.000
Ethane	C2:	4.251	1.137
Propane	C3:	3.164	0.872
Iso Butane	iC4:	0.404	0.132
Normal Butane	nC4:	1.152	0.363
Iso Pentane	iC5:	0.275	0.101
Normal Pentane	nC5:	0.343	0.124
Hexanes Plus	C6+:	0.932	0.407
TOTAL:		100.000	3.136
Z Fact:		0.9972	
SP.GR.:		0.6773	
BTU (SAT):		1139.8 @ 14.73 psia	
BTU (DRY):		1160.0 @ 14.73 psia	
OCTANE RATING:		122.2	

RECEIVED  
 STATE COMMISSION  
 NOV 2 5 1998  
 CONSERVATION DIVISION  
 Wichita, Kansas

COMMENTS: 0.000

KCC  
 NOV 18 1998  
 CONFIDENTIAL

RELEASED  
 MAY 08 2001  
 FROM CONFIDENTIAL

ORIGINAL

\*\*\* TOOL DIAGRAM \*\*\* CONVENTIONAL

CONFIDENTIAL

WELL NAME: Cary "36-16"

LOCATION : 36-32S-19W Comanche co KS

TICKET No. 10764 D.S.T. No. 1 DATE 8-6-98

TOTAL TOOL TO BOTTOM OF TOP PACKERS ..... 30

INTERVAL TOOL .....

BOTTOM PACKERS AND ANCHOR ..... 38

TOTAL TOOL ..... 68

DRILL COLLAR ANCHOR IN INTERVAL .....

D.C. ANCHOR STND.Stands Single Total

D.P. ANCHOR STND.Stands Single Total

TOTAL ASSEMBLY .....

D.C. ABOVE TOOLS.Stands 6 Single Total 350

D.P. ABOVE TOOLS.Stands 76 Single Total 4736

TOTAL DRILL COLLARS DRILL PIPE & TOOLS .. 5154

TOTAL DEPTH ..... 5135

TOTAL DRILL PIPE ABOVE K.B. .... 19

REMARKS:

FLUID SAMPLER DATA

Total Vol. 5000 ML.
Total Vol. Rec. 800 ML.
Oil 0 ML.
Mud 640 ML.
Wtr. 160 ML.
Gas 21.4 CF.
Psi. 1450
Bht. 118 F.
Pit RW. 1.1 Ohms at 65 F. 6,000 PPM.
Rec RW. 0.69 Ohms at 57 F. 11,000 PPM.
Gravity --- at -- F.

KCC

NOV 18 1993

CONFIDENTIAL

RELEASED

MAY 08 2001

FROM CONFIDENTIAL

Table with 2 columns: Tool Name and Depth. Includes items like P.O. SUB Cir. sub (5007), S.I. TOOL H&T (5073), SAMPLER (5076), HMV Sterling (5081), JARS Sterling (5086), SAFETY JOINT Bowen (5088), PACKER Sparton (5093), PACKER Sparton (5097), DEPTH (5099), STUBB Rec. sub (5099), ANCHOR Alpine (5099), T.C. DEPTH, Pu. sub (5104), AK-1 (5132), 29 ft. perfs (5133), BULLNOSE 2 ft. perf (5135), T.D. (5135).

STATE OF KANSAS RECEIVED NOV 23 1993

# TEST HISTORY

10764 D.S.T.#1 Cary "36-16" Samuel Gary

RECEIVED  
STATE CORPORATION COMMISSION

NOV 23 1998

CONSERVATION DIVISION  
Wichita, Kansas

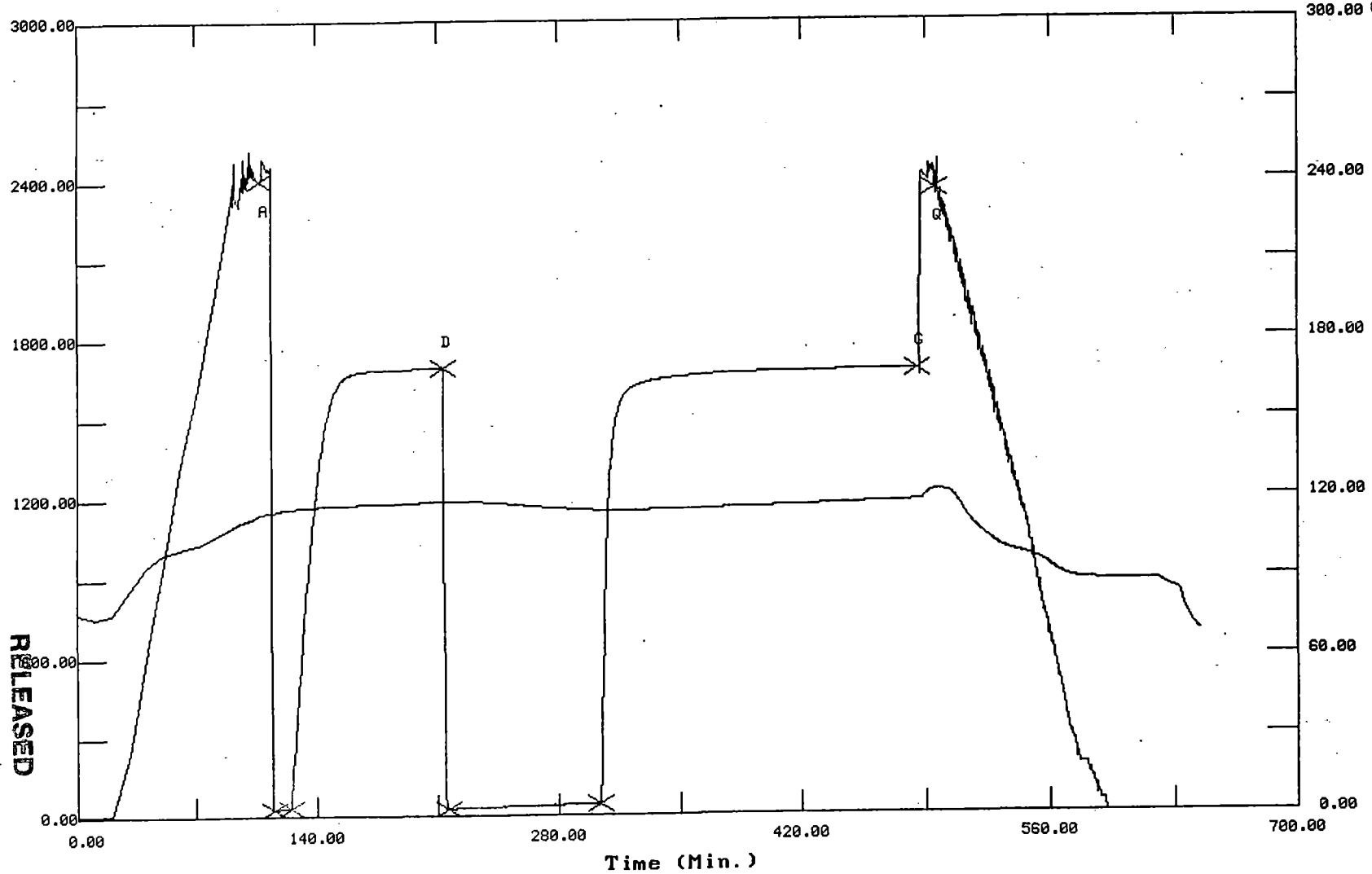
Flag Points  
t(Min.) P(PSig)

A:	0.00	2404.63
B:	0.00	22.37
C:	9.50	27.56
D:	89.00	1690.22
E:	0.00	24.42
F:	88.00	38.52
G:	180.50	1680.25
Q:	0.00	2364.30

CONFIDENTIAL

NOV 18 1998

KGCC



CONFIDENTIAL

Temperature (DEG F)

ORIGINAL

Pressure ( PSig )

FROM CONFIDENTIAL

MAY 08 2001

RELEASED

Time (Min.)

ORIGINAL

TRILOBITE TESTING L.L.C.

CONFIDENTIAL

OPERATOR : Samuel Gary
WELL NAME: Cary "36-16"
LOCATION : 36-32S-19W Comanche co KS
INTERVAL : 5133.00 To 5235.00 ft

DATE 8-7-98
KB 2076.00 ft
GR 2063.00 ft
TD 5235.00 ft
TICKET NO: 10765
DST #2
FORMATION: Top Miss.
TEST TYPE: CONVENTIONAL

RECORDER DATA

Table with columns: Mins, Field, 1, 2, 3, 4, TIME DATA. Rows include PF, SI, SF, FS with various measurements and time ranges.

Table with columns: Field, 1, 2, 3, 4. Rows include A through G with measurements for Init Hydro, First Flow, Final Flow, In Shut-in, Init Flow, Final Flow, Fl Shut-in, Final Hydro, and Inside/Outside.

T STARTED 2030 hr
T ON BOTM 2211 hr
T OPEN 2215 hr
T PULLED 0330 hr
T OUT 0730 hr

TOOL DATA-----
Tool Wt. 2800.00 lbs
Wt Set On Packer 22000.00 lbs
Wt Pulled Loose 100000.00 lbs
Initial Str Wt 92000.00 lbs
Unseated Str Wt 94000.00 lbs
Bot Choke 0.75 in
Hole Size 7.78 in
D Col. ID 2.25 in
D. Pipe ID 3.80 in
D.C. Length 350.00 ft
D.P. Length 4769.00 ft

RECOVERY

Tot Fluid 350.00 ft of 350.00 ft in DC and 0.00 ft in DP
4769.00 ft of Gas in pipe
350.00 ft of Thin Mud 100% mud
0.00 ft of
0.00 ft of
0.00 ft of
0.00 ft of
0.00 ft of
0.00 ft of

SALINITY 6600.00 P.P.M. A.P.I. Gravity

BLOW DESCRIPTION

Initial Flow:
Strong, off bottom of bucket in 30 sec.
Gas to surface in 4 mins.
Initial Shut-in:
No blow-back.
Final Flow:
Strong immediatly
Final Shut-in:
No blow back

Remark: Jarred several times to get loose. Tool came loose jarring 100,000 over string wt.

SAMPLES: One
SENT TO: Caraway

Test Successful: Y

RECEIVED
NOV 23 1998
CONSERVATION DIVISION
Wichita, Kansas
NOV 18 1998
CONFIDENTIAL

MUD DATA-----
Mud Type Chemical
Weight 9.20 lb/cf
Vis. 51.00 S/L
W.L. 12.00 in3
F.C. 0.00 in
Mud Drop Y 10.0 ft
Amt. of fill 0.00 ft
Btm. H. Temp. 117.00 F
Hole Condition Good
% Porosity 12.00
Packer Size 6.75 in
No. of Packers 2
Cushion Amt. 0.00
Cushion Type
Reversed Out N
Tool Chased N
Tester Lanny Saloga
Co. Rep. Dale Padgett
Contr. Duke
Rig # 7
Unit #
Pump T.

RELEASED

MAY 08 2001

FROM CONFIDENTIAL



GAS RECOVERY

CONFIDENTIAL ORIGINAL

COMPANY: Samuel Gary DATE: 8-7-98  
WELL NAME: Cary "36-16" KB Elev: 2076.00 ft TICKET #10765 DST #2  
WELL LOCATION: 36-32S-19W Comanche co KS GR Elev: 2063.00 ft FORMATION: Top Miss.  
INTERVAL Fr.: 5133.00 To 5235.00 T.D.: 5235.00 ft TEST TYPE: CONVENTIONAL

AS RECOVERY MEASURED WITH Merla Orifice

\*\*\*\* GAS RATES FOR FLOW #2

Time (min)	Orifice (in)	Pressure (Psi)	H2O (in)	Rate (cf/d)
10	0.75	23	0	436000.0
20	0.75	20	0	398000.0
30	0.75	18	0	370000.0
40	0.75	17	0	357000.0
50	0.75	16	0	344000.0
60	0.75	15	0	331000.0
70	0.75	14	0	317000.0

NOV 28 1998  
CONFIDENTIAL

RECEIVED  
STATE SUPERVISION COMMISSION  
CONVENTIONAL DIVISION  
1001 W. 12TH AVENUE  
DENVER, COLORADO 80202

RELEASED  
MAY 08 2001

FROM CONFIDENTIAL

CONFIDENTIAL

ORIGINAL

NATURAL GAS ANALYSIS REPORT

Sampled by:  
 Trilobite Testing, L. L. C.  
 Hays, Kansas  
 Scott City, Kansas  
 Phone: 800-728-5369  
 Fax: 913-625-5620

Analyzed by:  
 Caraway Analytical, Inc  
 P. O. Box 2137  
 Liberal, Kansas 67905  
 Phone: 316-624-5389  
 Fax: 316-626-7108

Lab Number:	983015	Analyzed:	08/09/98
Sample From:	Cary 36-16 DST 2	Pressure:	
Producer:	Samuel Gary Jr. & Assoc	Temperature:	
Date:		Location:	36-32-19
Time:		County:	Comanche
Sampler:		State:	Kansas
Source:		Formation:	Top Miss

KCC  
 NOV 18 1998  
 CONFIDENTIAL

	Mole %	GPM
Helium	He: 0.109	0.000
Hydrogen	H2: 0.007	0.000
Oxygen	O2: 0.000	0.000
Nitrogen	N2: 1.702	0.000
Carbon Dioxide	CO2: 0.197	0.000
Methane	C1: 92.670	0.000
Ethane	C2: 2.978	0.796
Propane	C3: 0.657	0.181
Iso Butane	iC4: 0.204	0.067
Normal Butane	nC4: 0.382	0.120
Iso Pentane	iC5: 0.139	0.051
Normal Pentane	nC5: 0.141	0.051
Hexanes Plus	C6+: 0.814	0.355
TOTAL:	100.000	1.622
Z Fact:	0.9977	
SP.GR.:	0.6205	
BTU (SAT):	1063.5 @	14.73 psia
BTU (DRY):	1082.3 @	14.73 psia
OCTANE RATING:	125.0	

CONSERVATION DIVISION  
 Wichita, Kansas

NOV 23 1998

RECEIVED  
 STATE CORPORATION COMMISSION

COMMENTS:

0.000

RELEASED

MAY 08 2001

FROM CONFIDENTIAL

ORIGINAL

\*\*\* TOOL DIAGRAM \*\*\* CONVENTIONAL

CONFIDENTIAL

WELL NAME: Cary "36-16"

LOCATION : 36-32S-19W Comanche co KS

TICKET No. 10765 D.S.T. No. 2 DATE 8-7-98

TOTAL TOOL TO BOTTOM OF TOP PACKERS ..... 30

INTERVAL TOOL .....

BOTTOM PACKERS AND ANCHOR ..... 39

TOTAL TOOL ..... 69

DRILL COLLAR ANCHOR IN INTERVAL .....

D.C. ANCHOR STND.Stands Single Total

D.P. ANCHOR STND.Stands 1 Single Total 63

TOTAL ASSEMBLY ..... 132

D.C. ABOVE TOOLS.Stands 6 Single Total 350

D.P. ABOVE TOOLS.Stands 76 Single 1 Total 4769

TOTAL DRILL COLLARS DRILL PIPE & TOOLS .. 5251

TOTAL DEPTH ..... 5235

TOTAL DRILL PIPE ABOVE K.B. .... 16

REMARKS:

FLUID SAMPLER DATA

Total Vol. 5000 ML.
Total Vol. Rec. 0 ML.
Oil 0 ML.
Mud 0 ML.
Wtr. 0 ML.
Gas 22.5 CF.
Psi. 1520
Bht. 117 F.
Pit RW. 0.60 Ohms at 72 F. 10,000 PPM.
Rec RW. 1.11 Ohms at 64 F. 6,600 PPM.
Gravity --- at -- F.
Rec. RW. was bottom sample, on top of tool.

KCC
NOV 18 1998
CONFIDENTIAL

Table with 2 columns: Description and Number. Includes items like P.O. SUB Cir. sub (5043), C.O. SUB Top of tool (5103), Sampler (5112), HMV Sterling (5117), JARS Sterling (5122), SAFETY JOINT Bowen (5124), PACKER Sparton (5129), DEPTH (5133), STUBB 3 ft. perms (5137), ANCHOR Co. sub (5138), 1 std. DP (5201), Co. sub (5202), Alpine (5202), T.C. DEPTH, Pu. sub (5207), AK-1 (5232), 26 ft. perms (5233), BULLNOSE 2 ft.perf (5235), T.D. (5235).

RECEIVED
STAFF OPERATIONAL INFORMATION
NOV 23 1998
CONSERVATION DIVISION
Michigan, Kansas

RELEASED

MAY 08 2001

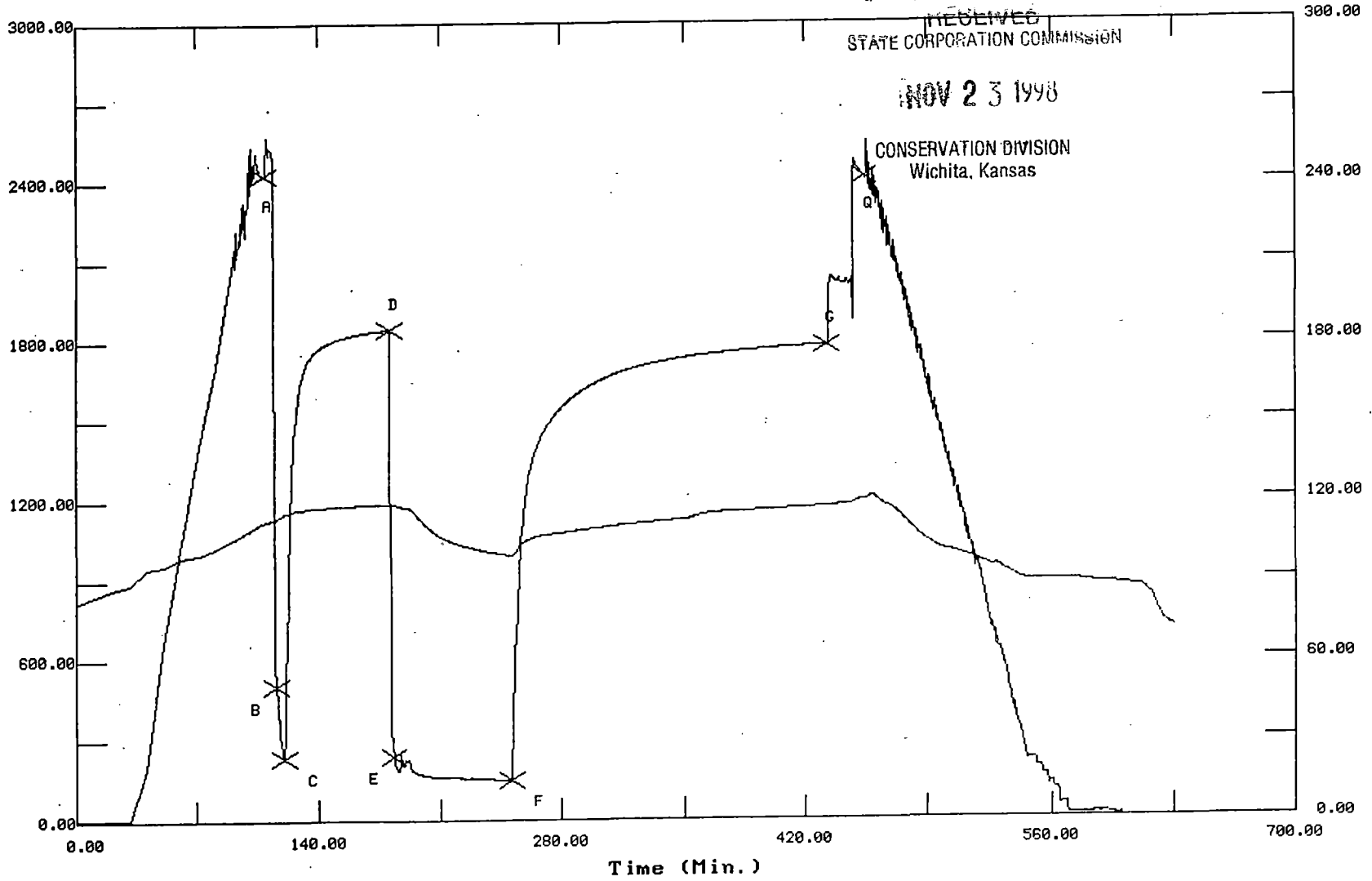
FROM CONFIDENTIAL

# TEST HISTORY

10765 D.S.T.#2 Cary "36-16" Samuel Gary

KGC  
 NOV 18 1993  
 CONFIDENTIAL

Flag Points		
t (Min.)	P (PSig)	
A:	0.00	2430.37
B:	0.00	500.83
C:	5.00	232.18
D:	60.50	1847.92
E:	0.00	236.57
F:	68.50	147.91
G:	180.50	1784.01
Q:	0.00	2418.11



CONFIDENTIAL

Temperature (DEG F)

ORIGINAL

Pressure ( PSig )

RELEASED

MAY 08 2001

FROM CONFIDENTIAL

Time (Min.)

ORIGINAL

TRILOBITE TESTING L.L.C.

OPERATOR : Samuel Gary **CONFIDENTIAL** DATE 8-10-98  
 WELL NAME: Cary "36-16" KB 2076.00 ft TICKET NO: 10766 DST #3  
 LOCATION : 36-32S-19W Comanche co KS GR 2063.00 ft FORMATION: Viola  
 INTERVAL : 5858.00 To 5870.00 ft TD 5870.00 ft TEST TYPE: CONVENTIONAL

RECORDER DATA

Mins	Field	1	2	3	4	TIME DATA-----
PF 10 Rec.	13630	13630	Alpine			PF Fr. 1335 to 1345 hr
SI 90 Range(Psi )	4625.0	4625.0	5000.0	0.0	0.0	IS Fr. 1345 to 1515 hr
SF 30 Clock(hrs)	12 HR	12 HR	12 HR			SF Fr. 1515 to 1545 hr
FS 90 Depth(ft )	5867.0	5867.0	5860.0	0.0	0.0	FS Fr. 1545 to 1715 hr

	Field	1	2	3	4	
A. Init Hydro	2796.0	2757.0	2814.0	0.0	0.0	T STARTED 1200 hr
B. First Flow	741.0	771.0	743.0	0.0	0.0	T ON BOTM 1332 hr
B1. Final Flow	735.0	763.0	780.0	0.0	0.0	T OPEN 1335 hr
C. In Shut-in	1431.0	1461.0	1470.0	0.0	0.0	T PULLED 1715 hr
D. Init Flow	819.0	851.0	786.0	0.0	0.0	T OUT 2145 hr
E. Final Flow	1078.0	117.0	1134.0	0.0	0.0	
F. Fl Shut-in	1431.0	1470.0	1455.0	0.0	0.0	TOOL DATA-----
G. Final Hydro	2731.0	2740.0	2793.0	0.0	0.0	Tool Wt. 1800.00 lbs
Inside/Outside	I	I	O			Wt Set On Packer 25000.00 lbs
						Wt Pulled Loose 15000.00 lbs
						Initial Str Wt 95000.00 lbs
						Unseated Str Wt 99000.00 lbs
						Bot Choke 0.75 in
						Hole Size 7.78 in
						D Col. ID 2.25 in
						D. Pipe ID 3.80 in
						D.C. Length 350.00 ft
						D.P. Length 5509.00 ft

RECOVERY

Tot Fluid 5859.00 ft of 350.00 ft in DC and 5509.00 ft in DP  
 5359.00 ft of Clean gassy oil with pockets of Gas  
 0.00 ft of 50% gas 50% oil  
 500.00 ft of Water  
 0.00 ft of  
 0.00 ft of  
 0.00 ft of  
 0.00 ft of  
 0.00 ft of

SALINITY 36000.00 P.P.M. A.P.I. Gravity 36.00

BLOW DESCRIPTION

Initial Flow:  
 Strong immediatly GTS in 3 min. Guaged  
 424,000 CFPD.  
 Initial Shut-in:  
 Off bottom of bucket blow-back.  
 Final Flow:  
 Guaged 227,000 CFPD in 10 min. Flowing  
 oil 17 min. into  
 Final Shut-in:  
 Blew oil & gas throughout

Remark: Pulled 6 stds DP. Reversed out to reserve pit. Large pockets of gas.

SAMPLES: One  
SENT TO:Caraway

Test Successful: Y

**KCC**  
**NOV 18 1998**  
**CONFIDENTIAL**

RECEIVED  
 NOV 9 1998  
 SEPT 2000  
 RECEIVED  
 DIVISION COMMISSION  
 WICHITA, KANSAS

MUD DATA-----

Mud Type	Chemical
Weight	9.20 lb/c
Vis.	53.00 S/L
W.L.	8.80 in3
F.C.	0.00 in
Mud Drop Y	30.0 ft
Amt. of fill	0.00 ft
Btm. H. Temp.	140.00 F
Hole Condition	Good
% Porosity	12.00
Packer Size	6.75 in
No. of Packers	2
Cushion Amt.	0.00
Cushion Type	
Reversed Out Y	
Tool Chased N	
Tester	Lanny Saloga
Co. Rep.	Dale Padgett
Contr.	Duke
Rig #	7
Unit #	
Pump T.	

RELEASED

MAY 08 2001

FROM CONFIDENTIAL

GAS RECOVERY

ORIGINAL

CONFIDENTIAL

COMPANY: Samuel Gary DATE: 8-10-98  
WELL NAME: Cary "36-16" KB Elev: 2076.00 ft TICKET #10766 DST #3  
WELL LOCATION: 36-32S-19W Comanche co KS GR Elev: 2063.00 ft FORMATION: Viola  
INTERVAL Fr.: 5858.00 To 5870.00 T.D.: 5870.00 ft TEST TYPE: CONVENTIONAL

GAS RECOVERY MEASURED WITH Merla Orifice

\*\*\*\* GAS RATES FOR FLOW #1

Time (min)	Orifice (in)	Pressure (Psi)	H2O (in)	Rate (cf/d)
5	0.75	18	0	370000.0
10	0.75	22	0	424000.0

1600  
NOV 13 1998  
CONFIDENTIAL

\*\*\*\* GAS RATES FOR FLOW #2

Time (min)	Orifice (in)	Pressure (Psi)	H2O (in)	Rate (cf/d)
10	0.75	8	0	227000.0

CONFIDENTIAL

RELEASED  
MAY 08 2001  
FROM CONFIDENTIAL

CONFIDENTIAL

ORIGINAL

NATURAL GAS ANALYSIS REPORT

Sampled by:  
 Trilobite Testing, L. L. C.  
 Hays, Kansas  
 Scott City, Kansas  
 Phone: 800-728-5369  
 Fax: 913-625-5620

Analyzed by:  
 Caraway Analytical, Inc  
 P. O. Box 2137  
 Liberal, Kansas 67905  
 Phone: 316-624-5389  
 Fax: 316-626-7108

Lab Number:	983022	Analyzed:	08/11/98
Sample From:	Cary 36-16 DST 3	Pressure:	08/10/98
Producer:	Samuel Gary Jr. & Assoc	Temperature:	
Date:		Location:	36-32-19
Time:		County:	Comanche
Sampler:		State:	Kansas
Source:		Formation:	Viola

KCC  
 NOV 18 1998  
 CONFIDENTIAL

	Mole %	GPM
Helium	He: 0.161	0.000
Hydrogen	H2: 0.002	0.000
Oxygen	O2: 0.000	0.000
Nitrogen	N2: 4.736	0.000
Carbon Dioxide	CO2: 0.173	0.000
Methane	C1: 82.008	0.000
Ethane	C2: 6.561	1.755
Propane	C3: 2.995	0.825
Iso Butane	iC4: 0.467	0.153
Normal Butane	nC4: 1.200	0.378
Iso Pentane	iC5: 0.330	0.121
Normal Pentane	nC5: 0.456	0.165
Hexanes Plus	C6+: 0.911	0.397
TOTAL:	100.000	3.794
Z Fact:	0.9971	
SP.GR.:	0.7013	
BTU (SAT):	1138.2	@ 14.73 psia
BTU (DRY):	1158.3	@ 14.73 psia
OCTANE RATING:	118.5	

CONSERVATION DIVISION  
 Wichita, Kansas

NOV 23 1998

RECEIVED  
 STATE PRODUCTION COMMISSION

COMMENTS:

0.000

RELEASED

MAY 08 2001

FROM CONFIDENTIAL

ORIGINAL

\*\*\* TOOL DIAGRAM \*\*\* CONVENTIONAL

CONFIDENTIAL

ELL NAME: Cary "36-16"

LOCATION : 36-32S-19W Comanche co KS

TICKET No. 10766 D.S.T. No. 3 DATE 8-10-98

TOTAL TOOL TO BOTTOM OF TOP PACKERS ..... 30

INTERVAL TOOL .....

TOTAL PACKERS AND ANCHOR ..... 12

TOTAL TOOL ..... 42

RILL COLLAR ANCHOR IN INTERVAL .....

.C. ANCHOR STND.Stands Single Total

.P. ANCHOR STND.Stands Single Total

TOTAL ASSEMBLY .....

.C. ABOVE TOOLS.Stands 6 Single Total 350

.P. ABOVE TOOLS.Stands 88 Single 1 Total 5509

TOTAL DRILL COLLARS DRILL PIPE & TOOLS .. 5901

TOTAL DEPTH ..... 5870

TOTAL DRILL PIPE ABOVE K.B. .... 31

REMARKS:

FLUID SAMPLER DATA

Total Vol. 5000 ML.
Total Vol. Rec. 1400 ML.
Oil 1400 ML.
Mud 0 ML.
Wtr. 0 ML.
Gas 18.9 CF.
Psi. 1,280
Bht. 140 F.
Pit RW. 0.75 Ohms at 72 F. 8,100 PPM.
Rec RW. 0.18 Ohms at 77 F. 36,000 PPM.
Gravity 36 at 60 F.
Rec. RW came from bottom sample on top tool.

Table with 2 columns: Description and Number. Includes items like P.O. SUB Cir. sub (5768), C.O. SUB Top of tool (5828), Double pin (5829), S.I. TOOL H&T (5834), Sampler (5837), HMV Sterling (5842), JARS Sterling (5847), SAFETY JOINT Bowen (5849), PACKER Sparton (5854), PACKER Sparton DEPTH (5858), STUBB Rec. sub (5860), ANCHOR Alpine (5860), Pu. sub (5865), AK-1 (5867), 3 ft. perf (5868), BULLNOSE 2 ft. perf (5870), T.D. (5870).

KCC
NOV 18 1998
CONFIDENTIAL

RECEIVED
STATE CORPORATION COMMISSION
NOV 23 1998
CONSERVATION DIVISION
Wichita, Kansas

T.C. DEPTH

RELEASED

MAY 08 2001

FROM CONFIDENTIAL

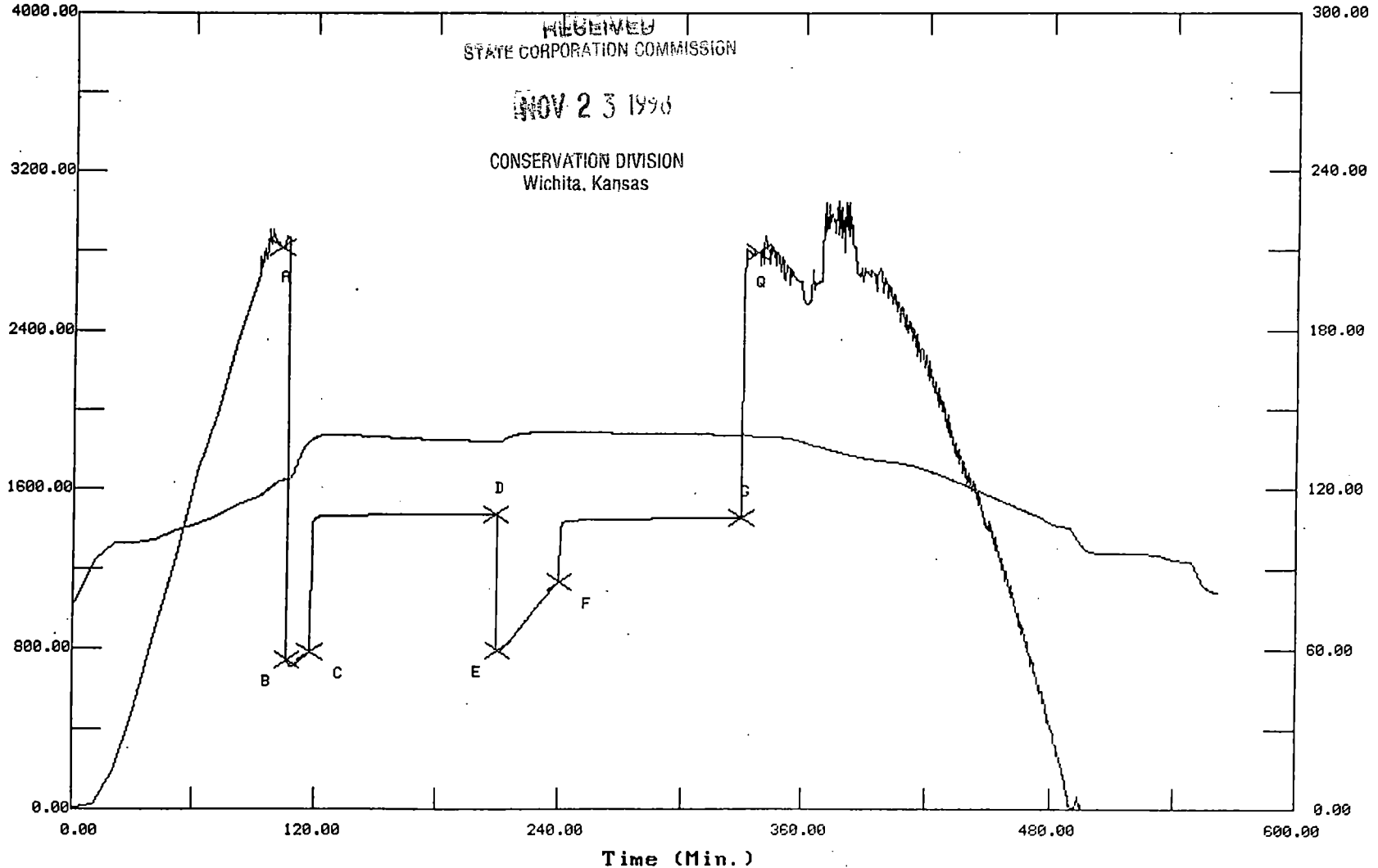


# TEST HISTORY

10766 D.S.T.#3 Cary "36-16" Samuel Gary

KGC  
 NOV 18 1993  
 CONFIDENTIAL

Flag Points		
t (Min.)	P (PSIg)	
R:	0.00	2814.25
B:	0.00	743.40
C:	11.00	780.81
D:	91.50	1470.11
E:	0.00	786.07
F:	30.00	1134.59
G:	89.00	1455.36
Q:	0.00	2793.74



CONFIDENTIAL

Temperature (DEG F)

ORIGINAL

Pressure (PSIg)

MAY 08 2001

RELEASED

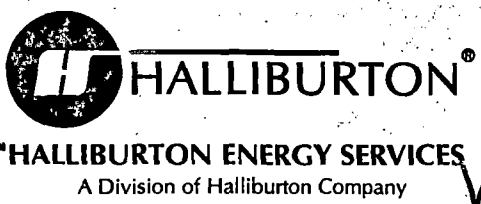
FROM CONFIDENTIAL

Time (Min.)

REMIT TO:  
 P.O. BOX 951046  
 DALLAS, TX 75395-1046  
 Corporate FIN 73-0271280

ORIGINAL  
 INVOICE

ORIGINAL



15148

INVOICE NO.	DATE
394749	07/30/1998

WELL LEASE NO./PROJECT	WELL/PROJECT LOCATION	STATE	OWNER
CARY 36-16	COMANCHE	KS	SAME

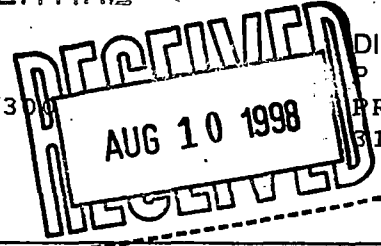
SERVICE LOCATION	CONTRACTOR	JOB PURPOSE	TICKET DATE
PRATT	DUKE DRILLING #7	SHOWN BELOW	07/30/1998

ACCT. NO.	CUSTOMER AGENT	VENDOR NO.	CUSTOMER P.O. NUMBER	SHIPPED VIA	FILE NO.
315450	KENNETH MCGUIRE			COMPANY TRUCK	4460

CONFIDENTIAL

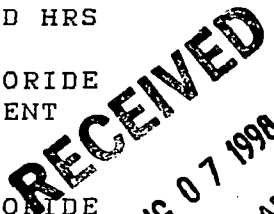
SAM GARY JR. & ASSOC.  
 1670 BROADWAY, SUITE 3300  
 DENVER, CO 80202-4838



DIRECT CORRESPONDENCE TO:  
 P O BOX 963  
 PRATT KS 67124  
 316-672-5593

KCC  
 NOV 18 1998

REFERENCE NO.	DESCRIPTION	QUANTITY	UM	UNIT PRICE	AMOUNT
PRICING AREA - MID CONTINENT					
JOB PURPOSE - CEMENT SURFACE CASING					
000-117	MILEAGE CEMENTING ROUND TRIP	68	MI	3.65	248.20
		1	UNT		
001-016	CEMENTING CASING	619	FT	1,630.00	1,630.00
		1	UNT		
030-016	CEMENTING PLUG 5W ALUM TOP	8	5/8 IN	132.00	132.00
		1	EA		
24A	INSERT FLOAT VALVE - 8 5/8"	1	EA	207.00	207.00
815.19502					
27	FILL-UP UNIT 7"- 8 5/8"	1	EA	81.00	81.00
815.19415					
320	BASKET-CMT-8 5/8 CSG X 21"	1	EA	146.00	146.00
806.71460					
40	CENTRALIZER-8-5/8 X 12-1/4	2	EA	95.00	190.00
806.60059					
019-200	PIPE 1"	100	FT	2.00	N/C
001-018	CEMENTING CASING - ADD HRS	2	HR	376.00	752.00
		1	UNT		
001-018	CEMENTING CASING - ADD HRS	6	HR	376.00	N/C
		1	UNT		
509-406	ANHYDROUS CALCIUM CHLORIDE	1	SK	46.90	46.90
504-280	MIDCON-2 STANDARD CEMENT	130	SK	14.17	1,842.10
504-308	CEMENT - STANDARD	115	SK	12.13	1,394.95
507-210	FLOCELE		LB	2.09	196.46
509-406	ANHYDROUS CALCIUM CHLORIDE	7	SK	46.90	328.30
500-207	BULK SERVICE CHARGE	273	CFT	1.66	453.18
500-306	MILEAGE CMTG MAT DEL OR RETURN	821.68	TMI	1.25	1,027.10
504-308	CEMENT - STANDARD	225	SK	12.13	2,729.25
507-277	HALLIBURTON-GEL BENTONITE	6	SK	22.90	137.40
507-210	FLOCELE	25	LB	2.09	52.25
508-127	CAL SEAL 60	10	SK	28.00	280.00
509-406	ANHYDROUS CALCIUM CHLORIDE	4	SK	46.90	187.60



SAMUEL GARY JR.  
 & ASSOCIATES INC.

STATE PRODUCTION COMMISSION

NOV 27 1998

CONSERVATION DIVISION  
 Wichita, Kansas

\*\*\*\*\* CONTINUED ON NEXT PAGE \*\*\*\*\*

RELEASED

ORDER NO. 10900

TERMS: If Customer does not have an approved open account with Halliburton, all sums due are payable in cash at the time of performance of services or delivery of equipment, products or materials. If customer has an approved open account, invoices are payable on the twentieth day after date of invoice. Customer agrees to pay interest of any unpaid balance from the date payable until paid at the highest lawful contract rate applicable, but never to exceed 18% per annum. In the event Halliburton employs an attorney for collection of any account, Customer agrees to pay attorney fees of 20% of the unpaid account, plus all collection and court costs.

MAY 08 2001

FROM CONFIDENTIAL

ORIGINAL  
INVOICE



**ORIGINAL HALLIBURTON ENERGY SERVICES**  
A Division of Halliburton Company

REMIT TO:  
P.O. BOX 951046  
DALLAS, TX 75395-1046  
Corporate FIN 73-0271280

INVOICE NO.	DATE
394749	07/30/1990

WELL LEASE NO./PROJECT	WELL/PROJECT LOCATION	STATE	OWNER		
CARY 36-16	COMANCHE	KS	SAME		
SERVICE LOCATION	CONTRACTOR	JOB PURPOSE	TICKET DATE		
PRATT	DUKE DRILLING #7	SHOWN BELOW	07/30/1990		
ACCT. NO.	CUSTOMER AGENT	VENDOR NO.	CUSTOMER P.O. NUMBER	SHIPPED VIA	FILE NO.
315450	KENNETH MCGUIRE			COMPANY TRUCK	4460

**CONFIDENTIAL**

SAM GARY JR. & ASSOC.  
1670 BROADWAY, SUITE 3300  
DENVER, CO 80202-4838

DIRECT CORRESPONDENCE TO:  
P O BOX 963  
PRATT KS 67124  
316-672-5593

KCC  
NOV 18 1990  
**CONFIDENTIAL**

REFERENCE NO.	DESCRIPTION	QUANTITY	UM	UNIT PRICE	AMOUNT
500-207	BULK SERVICE CHARGE	386	CFT	1.66	640.76
500-306	MILEAGE CMTG MAT DEL OR RETURN	1164.16	TMI	1.25	1,455.20
JOB PURPOSE SUBTOTAL					14,157.65
INVOICE SUBTOTAL					14,157.65
DISCOUNT-(BID)					7,786.65-
INVOICE BID AMOUNT					6,371.00
*- KANSAS STATE SALES TAX					254.18-
*- PRATT COUNTY SALES TAX					51.87

RECEIVED  
 STATE COMMODITY COMMISSION  
 NOV 23 1990  
 CONSERVATION DIVISION  
 Wichita, Kansas

RELEASED  
MAY 08 2001  
FROM CONFIDENTIAL

DRG. <input checked="" type="checkbox"/>	COMPL. <input type="checkbox"/>	PROD. <input type="checkbox"/>
AFE NO. 3616		
CHARGE CODE 720/60		
D. Putnam		

INVOICE TOTAL - PLEASE PAY THIS AMOUNT =====> \$6,677.05

TERMS: If Customer does not have an approved open account with Halliburton, all sums due are payable in cash at the time of performance of services or delivery of equipment, products or materials. If customer has an approved open account, invoices are payable on the twentieth day after date of invoice. Customer agrees to pay interest of any unpaid balance from the date payable until paid at the highest lawful contract rate applicable, but never to exceed 18% per annum. In the event Halliburton employs an attorney for collection of any account, Customer agrees to pay attorney fees of 20% of the unpaid account, plus all collection and court costs.



CHARGE TO: **Sam Gary Jr & Associates**  
 ADDRESS: **1670 Broadway Suite 3300**  
 CITY, STATE, ZIP CODE: **Denver Co 80202-4838**

CUSTOMER NO. **394749-3**  
 No. **ORIGINAL**  
 PAGE 1 OF 2

1906-Q  
 SERVICE LOCATIONS: **PRAT 25555**  
 WELL/PROJECT NO.: **36-16**  
 LEASE: **Cary**  
 COUNTY/PARISH: **Comanche**  
 STATE: **KS**  
 CITY/OFFSHORE LOCATION: **7-30-98**  
 DATE: **7-30-98**  
 OWNER: **Same**  
 TICKET TYPE:  SERVICE  SALES  
 NITROGEN JOB?  YES  NO  
 CONTRACTOR: **Duke Prtg**  
 RIG NAME/NO.: **# 7**  
 SHIPPED VIA: **CT Location**  
 ORDER NO.:  
 WELL TYPE: **0.1**  
 WELL CATEGORY: **Dev**  
 JOB PURPOSE: **0.1 Surface Pipe**  
 WELL PERMIT NO.: **010 15-033 20966000**  
 WELL LOCATION: **Land 36-32s-19**  
 REFERRAL LOCATION:  
 INVOICE INSTRUCTIONS:

JOB PURPOSE	PRICE REFERENCE	SECONDARY REFERENCE/ PART NUMBER	ACCOUNTING			DESCRIPTION	QTY.		UNIT PRICE		AMOUNT
			LOC	ACCT	DF		QTY.	UM	QTY.	UM	
010	000-117		1			MILEAGE	68 mi	1	3.65		248.20
	001-016		1			Pump Charge	619 Ft	4 hrs			1630.00
	030-016		1			5W Plug AL	1 ea	8 5/8 in			132.00
	24A	815-19502	1			Insert Float Valve	1 ea	8 5/8 in			207.00
	27	815-19415	1			Auto Fillup Tube 1.5"	1 ea	8 5/8 in			81.00
	320	806-71460	1			*Basket	1 ea	8 5/8 in			146.00
	40	806-60059	1			Centralizers	2 ea	8 5/8 in	95.00		190.00
	019-200	019-200	1			1" pipe 100'					NK
	601-018		1			Additional hrs	2 hrs		376.00		752.00
	001-018					Additional hrs	6 hrs		376.00		NK
	509-406					Calcium Chloride	1 sk				46.90

LEGAL TERMS: Customer hereby acknowledges and agrees to the terms and conditions on the reverse side hereof which include, but are not limited to, PAYMENT, RELEASE, INDEMNITY, and LIMITED WARRANTY provisions.

DATE SIGNED: **7-30-98**  
 TIME SIGNED: **00:30**  
 do not require IPC (Instrument Protection)  Not offered

TYPE LOCK \_\_\_\_\_ SUB SURFACE SAFETY VALVE WAS:  
 PULLED & RETURN  PULLED  RUN  
 BEAN SIZE \_\_\_\_\_ TYPE OF EQUALIZING SUB. \_\_\_\_\_ CASING PRESSURE \_\_\_\_\_  
 DEPTH \_\_\_\_\_ TUBING SIZE \_\_\_\_\_ TUBING PRESSURE \_\_\_\_\_ WELL DEPTH \_\_\_\_\_  
 SPACERS \_\_\_\_\_ TREE CONNECTION \_\_\_\_\_ TYPE VALVE \_\_\_\_\_

PAGE TOTAL: **3388.20**  
 FROM CONTINUATION PAGE(S): **11007241**  
 SUB-TOTAL APPLICABLE TAXES WILL BE ADDED ON INVOICE: **11411.97**

CUSTOMER ACCEPTANCE OF MATERIALS AND SERVICES The customer hereby acknowledges receipt of the materials and services listed on this ticket.

CUSTOMER OR CUSTOMER'S AGENT (PLEASE PRINT): **Sam Gary Jr**  
 CUSTOMER OR CUSTOMER'S AGENT (SIGNATURE): *[Signature]*  
 HALLIBURTON OPERATOR/ENGINEER: **Blair Byrd**  
 EMP #: **85826**  
 HALLIBURTON APPROVAL: \_\_\_\_\_

FROM CONFIDENTIAL  
 MAY 08 2001  
 RELEASED  
 NOV 18 2001  
 CONFIDENTIAL

RECEIVED  
 NOV 23 1998  
 CONSERVATION DIVISION  
 Wichita, Kansas  
 CONFIDENTIAL



ORIGINAL

Halliburton Energy Services

CONFIDENTIAL

DATE: 07-29-1998      TIME: 17:16:42      SERVICE TICKET: 394749  
 PRATT-25555      BULK TICKET ONLY: 100361  
 JOB PURPOSE: SURFACE      COMPANY TRUCK: :5621      DRIVER: D. Peterson      KCC

CUSTOMER: SAM GARY JR & ASSOCIATES INC.      NOV 18 1998  
 LEASE & WELL#: CARY 36-16      CONFIDENTIAL

504-280	MIDCON CEMENT	STANDARD	130	SKS.	14.17	1842.10
504-308	STANDARD CEMENT		115	SKS.	12.13	1394.95
507-210	FLOCELE		94	LBS.	2.09	196.46
509-406	CALCIUM CHLORIDE		7	SKS.	46.90	328.30
500-207	SERVICE CHARGES		273	CU FT	1.66	453.18
						TOTAL 4214.99
500-306	WEIGHT: 24167	MILES: 68	TON MILES: 821.68	1.25		1027.10
						TOTAL BOOK PRICE OF BULK TICKET: \$ 5242.09

500-225 RETURN SERVICE CHARGES \_\_\_\_\_ CU FT 1.66 \_\_\_\_\_  
 500-306 WEIGHT: \_\_\_\_\_ RETURN MILES: 68 TON MILES: \_\_\_\_\_ 1.25 \_\_\_\_\_

RELEASED  
 MAY 08 2001  
 FROM CONFIDENTIAL

RECEIVED  
 STATE PRODDING COMMISSION  
 NOV 23 1998  
 CONSERVATION DIVISION  
 Wichita, Kansas



ORIGINAL

Halliburton Energy Services

KCC

CONFIDENTIAL

NOV 18 1999

CONFIDENTIAL

DATE: 07-30-1998

TIME: 07:15:17

SERVICE TICKET: 394749

PRATT-25555

BULK TICKET ONLY: 100364

JOB PURPOSE: SURFACE COMPANY TRUCK: :7488 DRIVER: T.DOMANN

CUSTOMER: SAM GARY JR & ASSOCIATES INC

LEASE & WELL#: CARY 36-16

504-308	STANDARD CEMENT	<del>350</del> <sup>225</sup>	SKS.	12.13	<del>3032.50</del> <sup>2729.25</sup>
507-277	6 % ADDED GEL	6	SKS.	22.90	137.40
507-210	FLOCELE	25	LBS.	2.09	52.25
508-127	EA-2	10	SKS.	28.00	280.00
509-406	CALCIUM CHLORIDE	4	SKS.	46.90	187.60
500-207	SERVICE CHARGES	386	CU FT	1.66	640.76
					TOTAL <del>4164.51</del> <sup>5343.66</sup>
500-306	WEIGHT: <del>24833</del> <sup>34,233</sup>	MILES: 68	TON MILES: <del>844.32</del> <sup>1164.16</sup>	1.25	1455.20
					1055.40
					\$ 5219.91
					<del>5998.86</del>

5482.57  
46

500-225 RETURN SERVICE CHARGES \_\_\_\_\_ CU FT 1.66

500-306 WEIGHT: \_\_\_\_\_ RETURN MILES: 68 TON MILES: \_\_\_\_\_ 1.25

RELEASED  
MAY 08 2001  
FROM CONFIDENTIAL

RESERVATION DIVISION  
Wichita, Kansas  
NOV 23 1999  
RECEIVED  
RESERVATION DIVISION

**ORIGINAL**

TICKET #	314719	TICKET DATE	11-23-98
REGION	North America	BDA / STATE	MO
MBU/D / EMP #		PSL DEPARTMENT	22
LOCATION		CUSTOMER REP / PHONE	
TICKET AMOUNT		API / UWI #	
WELL LOCATION		JOB PURPOSE CODE	
LEASE / WELL #	2070	SEC / TWP / RNG	36-3-2 12-20

**CONFIDENTIAL**

HES EMP NAME/EMP#/(EXPOSURE HOURS)	HRS	HES EMP NAME/EMP#/(EXPOSURE HOURS)	HRS	HES EMP NAME/EMP#/(EXPOSURE HOURS)	HRS	HES EMP NAME/EMP#/(EXPOSURE HOURS)	HRS

CHART NO.	TIME	RATE (BPM)	VOLUME (BBL)(GAL)	PUMPS		PRESS. (psi)		JOB DESCRIPTION / REMARKS
				AT	.C.	Tbg	Csg	
	20:00							Called out
	23:30							On Location (Rig Dry Prlg Lost Circ)
								Run FLOAT Equipment
	01:30							Casing on bottom
	02:05	3	5					BREAK Circulation
	02:10	5	0			40		START MIXING MID CON II 11.4# 100SK
	02:20	5	52.3			40		START MIXING STANDARD 15.6#
	02:33	5	83.8			40		Finish Mixing
	02:34							Release Plug
	02:35	6	0			0		START Displacement
	02:45	2	370			80		Plug Down. (No Returns)
	02:47							Release PRESSURE FLOAT Held.
	02:50							RUN 1" To 100'
	03:00	2				100		START MIXING MID CON II 30 SKS
	03:20	2				100		START MIXING STANDARD 15 SKS
	03:30							FLUSH LINES No Circulation
	03:45							Wash up TRUCK (Pull 1" out of Hole)
								WOC
			10.5					Dump 8 SKS Hulls Down hole
								Pump 50 SKS Standard.
								No Circulation
	05:30							ORDER MORE Cement 100 SKS Thixotropic 150 SK
	08:45							Cmt on Location
	09:15		22					Mix 25 SKS 25std 50 Thixotropic
	11:00		8					Mix 25 SKS Thixotropic Cmt To Surface.
								Falling Back Slow WOC
	11:30							Fill BACK UP 25 SKS
	12:10							Cmt Staying
	12:15							Wash up
	13:00							Job Complete
								Thanks
								Glen - Chad

KCC  
NOV 10 1998  
CONFIDENTIAL

RECEIVED  
STATE CORPORATION COMMISSION  
NOV 23 1998  
CONSERVATION DIVISION  
Michigan, Kansas

RELEASED  
MAY 08 2001  
FROM CONFIDENTIAL

ORIGINAL  
INVOICE

**CONFIDENTIAL**  
AUG 20 1998



**HALLIBURTON**

HALLIBURTON ENERGY SERVICES  
A Division of Halliburton Company

REMIT TO:  
P.O. BOX 951046  
DALLAS, TX 75395-1046  
Corporate FIN 73-0271280

**ORIGINAL**

INVOICE NO.	DATE
395076	08/12/1998

WELL LEASE NO./PROJECT		WELL/PROJECT LOCATION		STATE	OWNER
GARY 36-16		COMANCHE		KS	SAME
SERVICE LOCATION	CONTRACTOR	JOB PURPOSE			TICKET DATE
PRATT	DUKE DRILLING ?	SHOWN BELOW			08/12/1998
ACCT. NO.	CUSTOMER AGENT	VENDOR NO.	CUSTOMER P.O. NUMBER	SHIPPED VIA	FILE NO.
315450	TED J FUCHS			COMPANY TRUCK	451

**CONFIDENTIAL RECEIVED**

DIRECT CORRESPONDENCE TO:

SAM GARY JR. & ASSOC.  
1670 BROADWAY, SUITE 3300  
DENVER, CO 80202-4838

AUG 20 1998 P O BOX 963  
PRATT KS 67124  
SAMUEL GARY JR 316-672-5593  
& ASSOCIATES INC.

V15836

REFERENCE NO.	DESCRIPTION	QUANTITY	UM	UNIT PRICE	AMOUNT
PRICING AREA - MID CONTINENT					
JOB PURPOSE - CEMENT PRODUCTION CASING					
000-117	MILEAGE CEMENTING ROUND TRIP	75	MI	3.65	273.75
		1	UNT		
000-119	MILEAGE FOR CREW	75	MI	2.15	N/C
		1	UNT		
001-016	CEMENTING CASING	5944	FT	2,422.00	2,422.00
		1	UNT		
030-016	CEMENTING PLUG 5W ALUM TOP	5.5	IN	66.00	66.00
		1	EA		
018-315	MUD FLUSH	500	GAL	.80	400.00
018-303	CLAYFIX II, PER GAL	2	GAL	33.95	67.90
019-241	CASING SWIVEL W/O WALL CLEANER	1	JOB	310.00	N/C
504-280	MIDCON-2 STANDARD CEMENT	220	SK	14.17	3,117.40
507-210	FLOCELE	55	LB	2.09	114.95
508-291	GILSONITE BULK	1100	LB	.58	638.00
509-406	ANHYDROUS CALCIUM CHLORIDE	5	SK	46.90	234.50
500-207	BULK SERVICE CHARGE	267	CFT	1.66	443.22
500-306	MILEAGE CMTG MAT DEL OR RETURN	862.28	TMI	1.25	1,077.85
JOB PURPOSE SUBTOTAL					8,855.57
INVOICE SUBTOTAL					8,855.57
DISCOUNT-(BID)					3,984.97
INVOICE BID AMOUNT					4,870.60
*- KANSAS STATE SALES TAX					153.40
*- PRATT COUNTY SALES TAX					31.31
<b>INVOICE TOTAL - PLEASE PAY THIS AMOUNT</b>					<b>\$5,055.31</b>

KCC  
NOV 18 1998  
CONFIDENTIAL

RECEIVED  
STATE CORPORATION COMMISSION  
NOV 25 1998  
CONSERVATION DIVISION  
Wichita, Kansas

3616

750/32

T.C. Jones

RELEASED  
MAY 08 2001

FROM CONFIDENTIAL

TERMS: If Customer does not have an approved open account with Halliburton, all services are payable in cash at the time of performance of services or delivery of equipment, products or materials. If customer has an approved open account, invoices are payable on the twentieth day after date of invoice. Customer agrees to pay interest on any unpaid balance from the date payable until paid at the highest lawful contract rate applicable, but never to exceed 18% per annum. In the event that customer employs an attorney for collection of any amount, Customer agrees to pay attorney fees of 30% of the unpaid account, plus all collection and court costs.





HALLIBURTON®

HALLIBURTON ENERGY SERVICES

1906-Q

Sam Gary JR & Associates, Inc.

ADDRESS

1670 Broadway, Suite 3300

CITY, STATE, ZIP CODE

45 Denver Co 80202-4838

No.

395076 - 0

ORIGINAL

PAGE 1 OF 2

1. SERVICE LOCATIONS Pratt KS	WELL/PROJECT NO. 36-16	LEASE Gary	COUNTY/PARISH Comanche	STATE KS	CITY/OFFSHORE LOCATION	DATE 8/12/98	OWNER Same
2. TICKET TYPE <input checked="" type="checkbox"/> SERVICE <input type="checkbox"/> SALES	NITROGEN JOB? <input type="checkbox"/> YES <input checked="" type="checkbox"/> NO	CONTRACTOR Duke Drlg	RIG NAME/NO. #7	SHIPPED VIA Haver	DELIVERED TO Loc	ORDER NO.	
3. WELL TYPE	WELL CATEGORY 01	JOB PURPOSE 035	WELL PERMIT NO.	WELL LOCATION Land			
4. REFERRAL LOCATION	INVOICE INSTRUCTIONS API# 15033209660000						

JOB PURPOSE	PRICE REFERENCE	SECONDARY REFERENCE/ PART NUMBER	ACCOUNTING			DESCRIPTION	QTY.		UNIT PRICE	AMOUNT
			LOC	ACCT	DF		QTY.	U/M		
035	000-117		1			MILEAGE 53387# RDTP	75	mi	3 65	273 15
	000-119		1			Crew mileage 421269# RDTP	75	mi	2 15	NIC
	001-016		1			Pump Charge 1 Trk	5999	ft	4 hrs	2422 -
	030-016		1			Top Swiper Plug	1	ea	5.5 in	66 -
	018-315		1			mud Flush	500	gal		80
	018-303		1			Clay-Fix II	2	gal		3395
	019-241		1			1sq Swivel	1	ea	5.5 in	310 -
			1			Bulk Trk #100380			5625 92	5625 92

CONFIDENTIAL

FROM CONFIDENTIAL  
MAY 08 2001  
RELEASED

KCC  
NOV 18 1993  
CONFIDENTIAL

RECEIVED  
STATE CORPORATION COMMISSION  
NOV 23 1998  
CONSERVATION DIVISION  
Wichita, Kansas

LEGAL TERMS: Customer hereby acknowledges and agrees to the terms and conditions on the reverse side hereof which include, but are not limited to, PAYMENT, RELEASE, INDEMNITY and LIMITED WARRANTY provisions.

X. DATE SIGNED: 8/12/98 TIME SIGNED: 0630

A.M.  P.M.

do not require IPC (Instrument Protection)  Not offered

TYPE LOCK	SUB SURFACE SAFETY VALVE WAS: <input type="checkbox"/> PULLED & RETURN <input type="checkbox"/> PULLED <input type="checkbox"/> RUN			PAGE TOTAL 8855 57
BEAN SIZE	TYPE OF EQUALIZING SUB.	CASING PRESSURE		FROM CONTINUATION PAGE(S)
DEPTH	TUBING SIZE	TUBING PRESSURE	WELL DEPTH	
SPACERS	TREE CONNECTION	TYPE VALVE		SUB-TOTAL APPLICABLE TAXES WILL BE ADDED ON INVOICE

CUSTOMER ACCEPTANCE OF MATERIALS AND SERVICES The customer hereby acknowledges receipt of the materials and services listed on this ticket.

CUSTOMER OR CUSTOMER'S AGENT (PLEASE PRINT) Ted J. Fuchs	CUSTOMER OR CUSTOMER'S AGENT (SIGNATURE) X [Signature]	HALLIBURTON OPERATOR/ENGINEER David L Scott	EMP # B9425	HALLIBURTON APPROVAL DL Scott
---	---	--	----------------	----------------------------------

ORIGINAL



Halliburton Energy Services

KCC

NOV 18 1998

CONFIDENTIAL

CONFIDENTIAL

DATE: 08-12-1998

TIME: 03:09:23

SERVICE TICKET: 395076

PRATT-25555

BULK TICKET ONLY: 100380

JOB PURPOSE: LONG STRING

COMPANY TRUCK: :7468 DRIVER: O.MUNZ

CUSTOMER: SAM GARY JR & ASSOCIATES LEASE & WELL#: GARY 36-16

504-280	MIDCON CEMENT	STANDARD	220	SKS.	14.17	3117.40
507-210	FLOCELE		55	LBS.	2.09	114.95
508-291	GILSONITE		1100	LBS.	0.58	638.00
509-406	CALCIUM CHLORIDE		5	SKS.	46.90	234.50
500-207	SERVICE CHARGES		267	CU FT	1.66	443.22
						TOTAL 4548.07
500-306	WEIGHT: 22994	MILES: 75	TON MILES: 862.28	1.25		1077.85
						TOTAL BOOK PRICE OF BULK TICKET: 5 5625.92

500-225 RETURN SERVICE CHARGES \_\_\_\_\_ CU FT 1.66

500-306 WEIGHT: \_\_\_\_\_ RETURN MILES: \_\_\_\_\_ TON MILES: \_\_\_\_\_ 1.25

CONSERVATION DIVISION  
Wichita, Kansas

NOV 23 1998

RECEIVED  
STATE CORPORATION COMMISSION

RELEASED

MAY 08 2001

FROM CONFIDENTIAL

TICKET #	TICKET DATE
BDA / STATE	COUNTY
PSL DEPARTMENT	
CUSTOMER REP / PHONE	
API / UWI #	
JOB PURPOSE CODE	

**ORIGINAL**

REGION North America	NWA/COUNTRY
MBU ID / EMP #	EMPLOYEE NAME
LOCATION	COMPANY
TICKET AMOUNT 555.57	WELL TYPE
WELL LOCATION	DEPARTMENT
LEASE / WELL # Gary	SEC / TWP / RNG

**CONFIDENTIAL**

HES EMP NAME/EMP#/(EXPOSURE HOURS)   HRS	HES EMP NAME/EMP#/(EXPOSURE HOURS)   HRS	HES EMP NAME/EMP#/(EXPOSURE HOURS)   HRS	HES EMP NAME/EMP#/(EXPOSURE HOURS)   HRS

CHART NO.	TIME	RATE (BPM)	VOLUME (BBL/GAL)	PUMPS		PRESS. (psi)		JOB DESCRIPTION / REMARKS
				T	C	Tbg	Csg	
1	0200							Called Out
	0500							On Loc w/Trks Safety Mtg T.I.H. w/Csg Comp F.E. Csg on Bottom Circ w/Rig 1 1/2 hrs Rig up Howco
	0900	6	20	✓		200		St 2% Clay-Fix II Flush
	0935	6	12	✓		200		St mud Flush
	0937	6	2	✓		210		Fresh H2O Spacer
	0945	6.2		✓		300		St Mixing Lead Cmt @ 12.8 ppg 125 sks
	0951	6.2	49.9	✓		250		St Mixing Tail Cmt @ 13.5 ppg 70 sks
	0955		21.8	✓				Finish mixing Cmt
			66.7					Total SL
	0958	6	10	✓				Close In + wash pump + line
				✓				Release Top Swiper Plug
	1000	7		✓		100		St Disp w/H2O
	1010	4	66	✓		50		St Disp w/H2O + Increase Rate
	1015	6	90	✓		200		70 bbls Disp out Required full line Increase Rate
	1017	6.0	140.4	✓		150		Plug Down + psi Test Csg
	1020			✓				Release psg
								Pl. R.I.H. + M.H. w/25 sks Cmt Lead SL

NOV 18 1999  
**CONFIDENTIAL**

**RELEASED**  
**MAY 08 2001**

FROM CONFIDENTIAL

CONSERVATION DIVISION  
 10112-1113  
 NOV 23 1999  
 MEDICAL  
 10112-1113

Job Complete  
Thank you Scotty