

STATE OF KANSAS
 STATE CORPORATION COMMISSION
 200 Colorado Derby Building
 Wichita, Kansas 67202

WELL PLUGGING RECORD
 K.A.R.-82-3-117

15-151-10756-00-00

API NUMBER N/A

LEASE NAME Knopp

WELL NUMBER B-2

 Ft. from S Section Line

 Ft. from E Section Line

SEC. 25 TWP. 26 RGE. 13W (E) or (W)

COUNTY Pratt

Date Well Completed

Plugging Commenced 8-3-92

Plugging Completed 8-6-92

TYPE OR PRINT
 NOTICE: Fill out completely
 and return to Cons. Div.
 office within 30 days.

LEASE OPERATOR T G T Petroleum Corp.

ADDRESS 209 E. Williams #615 Wichita, Kansas 67202

PHONE#(316) 262-6489 OPERATORS LICENSE NO. 5118

Character of Well Oil

(Oil, Gas, D&A, SWD, Input, Water Supply Well)

The plugging proposal was approved on (date)

by Duane Rankin (KCC District Agent's Name).

Is ACO-1 filled? If not, Is well log attached?

Producing Formation Depth to Top Bottom T.D. 4314'

Show depth and thickness of all water, oil and gas formations.

OIL, GAS OR WATER RECORDS | CASING RECORD

| Formation | Content | From | To | Size | Put in | Pulled out |
|-----------|---------|------|----|--------|--------|------------|
| | | | | 8 5/8" | 346' | none |
| | | | | 5 1/2" | 4313' | 1735' |
| | | | | | | |
| | | | | | | |

Describe in detail the manner in which the well was plugged, indicating where the mud fluid was placed and the method or methods used in introducing it into the hole. If cement or other plugs were used, state the character of same and depth placed, from feet to feet each set.
Sanded bottom to 3530' ran 5 sacks cement. Shot pipe @2000', 1735'.
Pumped 300# hulls, 10 gel, 50 sacks cement, 10 gel, 100# hulls, 8 5/8"
wiper plug 100 sacks 60/40 poz 6% gel.

(If additional description is necessary, use BACK of this form.)

Name of Plugging Contractor KELSO CASING PULLING, INC. License No. 6050

Address P.O. Box 347 Chase, Kansas 67524

RECEIVED
 STATE CORPORATION COMMISSION

NAME OF PARTY RESPONSIBLE FOR PLUGGING FEES: T G T Petroleum Corp.

STATE OF Kansas COUNTY OF Rice, ss.

AUG 20 1992
 8-20-92

R. Darrell Kelso (Employee of Operator CONSERVATION DIVISION) of above-described well, being first duly sworn on oath, says: That I have knowledge of the facts, statements, and matters herein contained and the log of the above-described well as filed that the same are true and correct, so help me God.

(Signature) R. Darrell Kelso

(Address) P.O. Box 347 Chase, KS. 67524

SUBSCRIBED AND SWORN TO before me this 19 day of August, 19 92

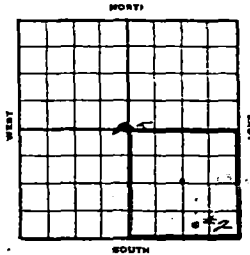
Irene Herzberg Notary Public

My Commission Expires:



15-151-10756-00-00

SKELLY OIL COMPANY



Well Record

Lease Name and No. Knop "B" #23494 Well No. 2 Elev. 1927'
 Lease Description Southeast Quarter (SE $\frac{1}{4}$) Section 25-26S-13W,
Pratt County, Kansas
 Location made February 9 1943 by Floyd Kent
330 feet from North line 990 feet from East line SE $\frac{1}{4}$
330 feet from South line _____ feet from West line of Sec. 25-26S-13W

EXHIBIT "B"
BID INVITATION
NO. 368

Work com'd Feb. 10 1943 Rig com'd Feb. 14 1943 Drig. com'd Feb. 15 1943 Drig. comp'd Mar. 12 1943
 Rig Contractor Ruso Drilling Company
 Drilling Contractor Ruso Drilling Company, Tulsa, Oklahoma
 Rotary Drilling from TOP to 4317' Cable Tool Drilling from 4317' to 4329'

Commenced Producing March 18 1943 Initial Prod. before shot or acid 1100' CIH in 4 hrs. 28K
 Initial Prod. after shot or acid 6195 bbls. (Ind. Productivity
 by bomb SHP test) established 24 hr. max. 800 c
 Volume prod. of 3000 bbls. Cu. ft.

Dry Gas Well Press _____ Volume _____ Cu. ft.
 Casing Head Gas Pressure _____ Volume _____ Cu. ft.
 Braden Head (8-5/8" 25-1/2" OD) Gas Pressure _____ Volume _____ Cu. ft.
 Braden Head (_____) Gas Pressure _____ Volume _____ Cu. ft.
 PRODUCING FORMATION Arbuckle Lime Top 4313' Bottom 4329' TOTAL DEPTH 4329'
 (Name) (PBD 4320' PBD 4200' PBD 4329')

CASING RECORD

| Size | Wt. | Thds. | Where Set | PULLED OUT | | | LEFT IN | | | KIND | Cond'n | CEMENTING | |
|---------------|-----|-------|--|------------|------|------|---------|------|----------|------|--------|-------------|-----------------|
| | | | | Ins. | Feet | Ins. | Ins. | Feet | Ins. | | | Sacks Used | Method Employed |
| 8-5/8" OD | 28# | 8R | 346' | | | 12 | 342 | .7 | Lapweld | "A" | 150 | Halliburton | |
| 8-5/8" casing | | | Grade 7, Range 2 | | | | | | | | | | |
| 5-1/2" OD | 14# | 8R | 4313' | | | 131 | 4346 | 9 | Seamless | "A" | 250 | Halliburton | |
| 5-1/2" casing | | | Grade H-40, Range 2 | | | | | | | | | | |
| | | | (5-1/2" casing cased to derrick floor and 8-5/8" casing set 6 ft. in cellar) | | | | | | | | | | |
| | | | (5-1/2" casing perforated 426' to 431' with 30 holes) | | | | | | | | | | |
| | | | (Used 1 + Baker Combination Guide and Float Shoe) | | | | | | | | | | |

Liner Set at _____ Length _____ Perforated at _____
 Packer Set at _____ Size and Kind _____
 Packer Set at _____ Size and Kind _____

SHOT OR ACID TREATMENT RECORD

| Date | FIRST | | SECOND | | THIRD | | FOURTH | |
|--|-------------------------------------|---------------|-----------------|-------------------------------------|---------------|---------------|--------------------------------------|-------------------------|
| | Shot Between | Size of Shell | Shot Between | Size of Shell | Shot Between | Size of Shell | Shot Between | Size of Shell |
| March 14, 1943 | 4313 $\frac{1}{2}$ Ft. and 4329 Ft. | 750 | March 15, 1943 | 4313 $\frac{1}{2}$ Ft. and 4329 Ft. | 2000 | JAN. 31, 1954 | 4229' Ft. and 4239 $\frac{1}{2}$ Ft. | 4216' Ft. and 4222' Ft. |
| Acid Used | 750 | Gal. | 2000 | Gal. | Sand-Oil-Frac | Gal. | Sand-Oil-Frac | Gal. |
| Put in by (Co.) | Morgan Acid Co. | | Morgan Acid Co. | | Halliburton | | Halliburton | |
| Length anchor | | | | | | | | |
| Distance below Casing or Casing Shoulder | None | | None | | | | | |

SIGNIFICANT GEOLOGICAL FORMATIONS

| NAME | Top | Bottom | GAS | | OIL | | REMARKS |
|------------------|-------|--------|------|----|--------------------|------|------------------------|
| | | | From | To | From | To | |
| Lansing Lime | 3721' | | | | 3868 | 3872 | Porous and saturated |
| Viola Lime | 4107' | ✓ | | | | | |
| Simpson Shale | 4195' | ✓ | | | | | |
| Simpson Dolomite | 4205' | ✓ | | | | | |
| Simpson Sand | 4228' | ✓ | | | 4228 | 4240 | Good Stain |
| Arbuckle Lime | 4313' | ✓ | | | | | Pay Formation |
| | | | | | 4317 $\frac{1}{2}$ | 4324 | Porous & saturated |
| | | | | | 4324 | 4329 | Sli. por. & saturation |

CLEANING OUT RECORDS

| | DATE COMMENCED | DATE COMPLETED | PROD. BEFORE | PROD. AFTER | REMARKS |
|-----|----------------|----------------|--------------|-------------|--------------------------------|
| 1st | | | | | See Reverse for other details. |
| 2nd | | | | | " " " " " |
| 3rd | | | | | " " " " " |
| 4th | | | | | " " " " " |

PLUGGING BACK AND DEEPENING RECORDS

| | Date Commenced | Date Completed | No. Feet Plugged Back or Deepened | Prod. Before | Prod. After | REMARKS |
|-----|----------------|----------------|-----------------------------------|----------------|--------------|--------------------------------|
| 1st | P.B. 12-17-45 | 4-25-46 | FB 8-1/2' | 40 oil-900 wtr | 52 oil- | See Reverse for other details. |
| 2nd | P.B. 1-25-54 | 2-18-54 | 4320' - 4277' | 4 oil-196 wtr | 208 wtr | " " " " " |
| 3rd | P.B. 7-6-55 | 9-12-55 | 4277' - 4200' | 1 oil-3 wtr | 92 oil-nowtr | " " " " " |
| 4th | | | | | | " " " " " |

(See Reverse for Record of Formation)

4106
1927
2189
4195
1927
2268
4212
1927
2787

WELL NO. 2

RECEIVED
STATE CORPORATION COMMISSION

JUL 10 1992

CONSERVATION DIVISION
Wichita, Kansas

15-151-10756-00-00

RECORD OF FORMATIONS

| FORMATION | TOP | BOTTOM | REMARKS <small>Indicate Casing Points, Describe Shows of Oil, Gas and Water, etc.</small> |
|--|-----------|-----------|---|
| Surface soil and sand | 0 | 15 | |
| Shale and sand | 15 | 60 | |
| Sand and gravel | 60 | 100 | |
| Sand, shale and lime | 100 | 348 | Set and cemented 8-5/8" OD 28# 8 Round thread, Range 2, Lapweld Steel casing at 346' with 150 sacks of cement and 6 sacks of aquagel. |
| Shale and red bed | 348 | 525 | |
| Shale | 525 | 1430 | |
| Lime | 1430 | 1470 | |
| Shale | 1470 | 1700 | |
| Lime | 1700 | 1940 | |
| Shale | 1940 | 1970 | |
| Lime | 1970 | 2005 | |
| Shale | 2005 | 2120 | |
| Lime | 2120 | 2215 | |
| Shale | 2215 | 2275 | |
| Lime | 2275 | 2280 | |
| Shale | 2280 | 2370 | |
| Broken lime | 2370 | 2480 | |
| Lime | 2480 | 2540 | |
| Shale | 2540 | 2575 | |
| Lime | 2575 | 2660 | |
| Shale | 2660 | 2990 | |
| Lime | 2990 | 3040 | |
| Broken lime | 3040 | 3110 | |
| Lime | 3110 | 3280 | |
| Shale | 3280 | 3325 | |
| Sandy lime | 3325 | 3420 | |
| Lime | 3420 | 3550 | |
| Shale | 3550 | 3630 | |
| Lime | 3630 | 3645 | |
| Shale | 3645 | 3755 | TOP LANSING LIME 3721' 3744' to 3753' Medium soft grey oolitic lime, porous and saturated - 3769' to 3774' Same and 3868' to 3872' Medium soft brown oolitic lime, porous and saturated. |
| Lime | 3755 | 4019 | |
| Shale | 4019 | 4040 | |
| Lime | 4040 | 4107 | |
| Chert | 4107 | 4130 | TOP VIOLA LIME 4107' TOP SIMPSON SHALE 4195' |
| Shale and chert | 4130 | 4195 | |
| Simpson shale | 4195 | 4205 | |
| Grey sandy dolomite | 4205 | 4217 | No saturation TOP SIMPSON DOLOMITE 4205' TOP SIMPSON SAND 4228' |
| Dark grey shale | 4217 | 4228 | |
| Grey and brown sand with medium porosity | 4228 | 4240 | Good stain |
| Dark grey shale | 4240 | 4295 | |
| Dark grey shale | 4295 | 4307 | |
| Grey shale with dolomite | 4307 | 4313 | |
| Dense grey finely crystalline dolomite | 4313 | 4317 | No porosity, slight stain TOP ARBUCKLE LIME 4313' Set and cemented 5-1/2" OD, 14#, Grade H-40, 8 Round Thread, Seamless Steel casing at 4313 1/2' with 250 sacks of cement and 5 sacks of aquagel. Finished cementing at 9:30 PM, March 5, 1943, and while shut down waiting for cement to set, moved out rotary tools and moved in and rigged up cable tools. Finished rigging up and bailed the hole down on March 11, 1943, and 5-1/2" casing tested OK. Drilled cement plug to 4296', loaded hole with 1500 feet of water then drilled bottom plug. On March 12, 1943, bailed out water used in loading hole and cement job tested OK, no steel line corrections. |
| Grey, finely crystalline dolomite | 4317 | 4317 1/2' | No porosity |
| Grey and brown coarsely crystalline dolomite | 4317 1/2' | 4324 | Porous and saturated, 500' OIH in 1 hr. |
| Brown and grey crystalline dolomite with 10% white chert | 4324 | 4329 | Slight porosity and saturation, 1100' OIH in 4 hours |
| TOTAL DEPTH | | 4329 | |

EXHIBIT "B"
BID INVITATION
NO. 368

WELL NO. 2

RECEIVED
STATE CORPORATION COMMISSION

JUL 10 1992

CONSERVATION DIVISION
Wichita, Kansas

On March 13, 1943, ran 2 1/2" tubing and on March 14, 1943, treated with 750 gallons of Morgan Acid as follows: