

STATE CORPORATION COMMISSION OF KANSAS
OIL & GAS CONSERVATION DIVISION
WELL COMPLETION FORM
ACO-1 WELL HISTORY
DESCRIPTION OF WELL AND LEASE

Operator: License # 3613

Name: HALLWOOD PETROLEUM, INC.

Address 4582 S. Ulster Street
Parkway, Suite #1700

City/State/Zip Denver, CO 80237

Purchaser: D&A

Operator Contact Person: BRUCE HOFFMAN

Phone (303) 850 6257

Contractor: Name: ALLEN DRILLING COMPANY

License: 5418

Wellsite Geologist: _____

Designate Type of Completion
 New Well Re-Entry Workover

Oil SWD SIOW Temp. Abd.
 Gas ENHR SIGW
 Dry Other (Core, MSW, Expl., Cathodic, etc)

If Workover/Re-Entry: old well info as follows:

Operator: N/A

Well Name: _____

Comp. Date _____ Old Total Depth _____

Deepening Re-perf. Conv. to Inj/SWD
 Plug Back _____ PBTB
 Commingled _____ Docket No. _____
 Dual Completion _____ Docket No. _____
 Other (SWD or Inj?) _____ Docket No. _____

9/22/93 10/07/93 10/07/93
Spud Date Date Reached TD Completion Date

API NO. 15- 033-20,874-0000

County Comanche

SE - NW - SE Sec. 19 Twp. 32 Rge. 19 ^E _W

1950 Feet from N (circle one) Line of Section

1750 Feet from E/W (circle one) Line of Section

Footages Calculated from Nearest Outside Section Corner:
NE, SE, NW or SW (circle one)

Lease Name REYNOLDS Well # 2

Field Name NA

Producing Formation D&A

Elevation: Ground _____ 5'
KB _____

Total Depth 5960' PBTB _____

Amount of Surface Pipe Set and Cemented at 720 Feet

Multiple Stage Cementing Collar Used? Yes No

If yes, show depth set _____ Feet

If Alternate II completion, cement circulated from _____

feet depth to _____ w/ _____ sx cat.

Drilling Fluid Management Plan D&A JH 4-20-94
(Data must be collected from the Reserve Pit)

Chloride content _____ ppm Fluid volume _____ bbls

Dewatering method used _____

Location of fluid disposal if hauled offsite:

RELEASED

Operator Name _____

Lease Name _____ License No. _____

Quarter FROM CONFIDENTIAL E/W _____

County _____ Docket No. _____

INSTRUCTIONS: An original and two copies of this form shall be filed with the Kansas Corporation Commission, 200 Colorado Derby Building, Wichita, Kansas 67202, within 120 days of the spud date, recompletion, workover or conversion of a well. Rule 82-3-130, 82-3-106 and 82-3-107 apply. Information on side two of this form will be held confidential for a period of 12 months if requested in writing and submitted with the form (see rule 82-3-107 for confidentiality in excess of 12 months). One copy of all wireline logs and geologist well report shall be attached with this form. ALL CEMENTING TICKETS MUST BE ATTACHED. Submit CP-4 form with all plugged wells. Submit CP-111 form with all temporarily abandoned wells.

All requirements of the statutes, rules and regulations promulgated to regulate the oil and gas industry have been fully complied with and the statements herein are complete and correct to the best of my knowledge.

Signature Bruce Hoffman

Title Engs Tech Date 1-18-94

Subscribed and sworn to before me this 18th day of January, 19 94.

Notary Public Jada M. Christian

Date Commission Expires 9/1/97

RECEIVED
STATE CORPORATION COMMISSION
1-24-94
JAN 24 1994

K.C.C. OFFICE USE ONLY

F Letter of Confidentiality Attached
C Wireline Log Received
C Geologist Report Received

Distribution

KCC SWD/Rep NGPA
 KGS Plug Other
(Specify)

Operator Name ALLEN DRILLING COMPANY

Lease Name REYNOLDS

Well # 2

Sec. 19 Twp. 32 Rge. 19

East
 West

County Comanche

INSTRUCTIONS: Show important tops and base of formations penetrated. Detail all cores. Report all drill stem tests giving interval tested, time tool open and closed, flowing and shut-in pressures, whether shut-in pressure reached static level, hydrostatic pressures, bottom hole temperature, fluid recovery, and flow rates if gas to surface during test. Attach extra sheet if more space is needed. Attach copy of log.

Drill Stem Tests Taken Yes No
(Attach Additional Sheets.)

Samples Sent to Geological Survey Yes No

Cores Taken Yes No

Electric Log Run Yes No
(Submit Copy.)

List All E.Logs Run:

Complex Lithology Analysis
Microlog
Spec. Density Dual Spaced Neutron II Log
High Res. Induction DFL Log

Log Formation (Top), Depth and Datums Sample

| Name | Top | Datum |
|----------|------|-------|
| Stotler | 3447 | -1505 |
| Tarkio | 3516 | -1574 |
| Topeka | 3708 | -1766 |
| Elgin | 4065 | -2123 |
| Heebner | 4185 | -2243 |
| Toronto | 4195 | -2253 |
| Lansing | 4378 | -2436 |
| Stark | 4714 | -2772 |
| Hush | 4766 | -2824 |
| Marmaton | 4875 | -2933 |
| Pawnee | 4957 | -3015 |

CON'T.

CASING RECORD

New Used

Report all strings set-conductor, surface, intermediate, production, etc.

| Purpose of String | Size Hole Drilled | Size Casing Set (In O.D.) | Weight Lbs./Ft. | Setting Depth | Type of Cement | # Sacks Used | Type and Percent Additives |
|-------------------|-------------------|---------------------------|-----------------|---------------|-----------------------|--------------|----------------------------|
| conductor | 17-5/8 | 13-3/4" | 48# | 108' | 40/60poz 60/40poz | 100 60 | 3%cc 2%gel 3%cc |
| surface | 12-1/4 | 8-5/8" | 25# | 720' | HowcoLite 40/60pox | 260 220 | 3%cc |

ADDITIONAL CEMENTING/SQUEEZE RECORD

| Purpose: | Depth Top Bottom | Type of Cement | #Sacks Used | Type and Percent Additives |
|---|------------------|----------------|-------------|----------------------------|
| <input type="checkbox"/> Perforate | | | | |
| <input type="checkbox"/> Protect Casing | | | | |
| <input type="checkbox"/> Plug Back TD | | | | |
| <input type="checkbox"/> Plug Off Zone | | | | |

| Shots Per Foot | PERFORATION RECORD - Bridge Plugs Set/Type | Acid, Fracture, Shot, Cement Squeeze Record |
|----------------|---|---|
| | Specify Footage of Each Interval Perforated | (Amount and Kind of Material Used) Depth |
| | | |
| | | |
| | | |

| TUBING RECORD | Size | Set At | Packer At | Liner Run |
|---------------|------|--------|-----------|--|
| | | | | <input type="checkbox"/> Yes <input type="checkbox"/> No |

Date of First Resumed Production, SWD or Inj. None; Dry Producing Method Flowing Pumping Gas Lift Other (Explain)

| Estimated Production Per 24 Hours | Oil N/A Bbls. | Gas N/A Mcf | Water N/A Bbls. | Gas-Oil Ratio | Gravity |
|-----------------------------------|---------------|-------------|-----------------|---------------|---------|
| | | | | | |

Disposition of Gas:

Vented Sold Used on Lease
(If vented, submit ACO-18.)

METHOD OF COMPLETION

Open Hole Perf. Dually Comp. Commingled
 Other (Specify)

Production Interval

Hallwood Energy Companies

4582 South Ulster Street Parkway • Stanford Place III • Suite 1700 • Post Office Box 378111
Denver, Colorado 80237 • (303) 850-7373

CONFIDENTIAL

API# 15-033-20,874

CONTINUATION OF FORMATION TOPS FOR THE REYNOLDS #2

ORIGINAL

| <u>NAME</u> | <u>TOP</u> | <u>DATUM</u> |
|-------------|------------|--------------|
| Labette | 4989 | -3047 |
| Cherokee | 5002 | -3060 |
| Miss. | 5098 | -3156 |
| Warsaw | 5382 | -3440 |
| Cowley | 5425 | -3483 |
| Chouteau | 5806 | -3864 |
| Viola | 5824 | -3882 |

RELEASED

MAR 1 4 1996

FROM CONFIDENTIAL

RECEIVED
STATE CORPORATION COMMISSION

JAN 2 4 1994

CONSERVATION DIVISION
Wichita, Kansas

TRILOBITE TESTING, L.L.C. ORIGINAL

P.O. Box 362 • Hays, Kansas 67601

CONFIDENTIAL

Drill-Stem Test Data

API # 15-033-20,874

Well Name REYNOLDS #2 Test No. 1 Date 10/1/93
 Company HALLWOOD PETROLEUM INC. Zone MARMATON
 Address P.O. BOX 378111 DENVER CO 80237-8111 Elevation 1942
 Co. Rep./Geo. JIM SPELLMAN Cont. ALLEN RIG #1 Est. Ft. of Pay _____
 Location: Sec. 19 Twp. 32S Rge. 19W Co. COMANCHE State KS

| | | | |
|---------------------|------------------|-----------------------------|--------------------------------|
| Interval Tested | <u>4858-5005</u> | Drill Pipe Size | <u>4.5" XH</u> |
| Anchor Length | <u>147</u> | Wt. Pipe I.D. - 2.7 Ft. Run | _____ |
| Top Packer Depth | <u>4853</u> | Drill Collar - 2.25 Ft. Run | _____ |
| Bottom Packer Depth | <u>4858</u> | Mud Wt. | <u>9.2</u> lb/Gal. |
| Total Depth | <u>5005</u> | Viscosity | <u>42</u> Filtrate <u>10.6</u> |

Tool Open @ _____ Initial Blow HIT BRIDGE @1175

Final Blow _____

RELEASED

Recovery - Total Feet _____ Flush Tool? NO **MAR 14 1996**

Rec. _____ Feet of _____
 Rec. _____ Feet of _____
 Rec. _____ Feet of _____
 Rec. _____ Feet of _____
 Rec. _____ Feet of _____

FROM CONFIDENTIAL

BHT 90 °F Gravity _____ °API @ _____ °F Corrected Gravity _____ °API
 RW _____ @ _____ °F Chlorides _____ ppm Recovery Chlorides 5000 ppm System

(A) Initial Hydrostatic Mud 525.1 PSI AK1 Recorder No. 13754 Range 4000

(B) First Initial Flow Pressure _____ PSI @ (depth) 4862 w / Clock No. 27501

(C) First Final Flow Pressure _____ PSI AK1 Recorder No. 7437 Range 4200

(D) Initial Shut-in Pressure _____ PSI @ (depth) 5001 w / Clock No. 27567

(E) Second Initial Flow Pressure _____ PSI AK1 Recorder No. _____ Range _____

(F) Second Final Flow Pressure _____ PSI @ (depth) _____ w / Clock No. _____

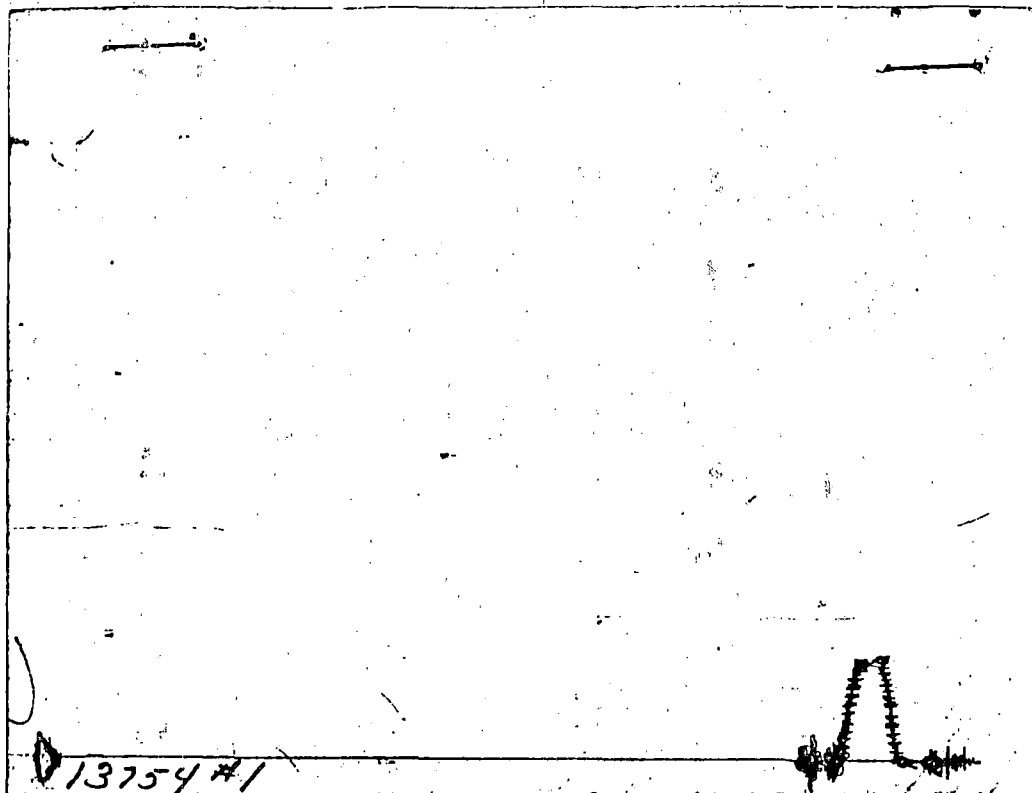
(G) Final Shut-in Pressure _____ PSI Initial Opening _____

(H) Final Hydrostatic Mud 511.4 PSI Initial Shut-in _____

Our Representative DAN BANGLE

RECEIVED
 STATE CORPORATION COMMISSION
 Final Flow **RECEIVED**
 STATE CORPORATION COMMISSION
JAN 24 1994
 CONSERVATION DIVISION
 Wichita, Kansas
 CONSERVATION DIVISION
 Wichita, Kansas

CHART PAGE



This is an actual photograph of recorder chart

ORIGINAL

RELEASED

MAR 14 1996

FROM CONFIDENTIAL

FIELD
READING

OFFICE
READING

| | | |
|----------------------------------|-----|-------|
| (A) INITIAL HYDROSTATIC MUD | 521 | 525.1 |
| (B) FIRST INITIAL FLOW PRESSURE | | |
| (C) FIRST FINAL FLOW PRESSURE | | |
| (D) INITIAL CLOSED-IN PRESSURE | | |
| (E) SECOND INITIAL FLOW PRESSURE | | |
| (F) SECOND FINAL FLOW PRESSURE | | |
| (G) FINAL CLOSED-IN PRESSURE | | |
| (H) FINAL HYDROSTATIC MUD | 501 | 511.4 |

TRILOBITE TESTING, L.L.C. ORIGINAL

P.O. Box 362 • Hays, Kansas 67601

Drill-Stem Test Data

Well Name REYNOLDS #2 Test No. 2 Date 10/1/93
 Company HALLWOOD PETROLEUM INC. Zone MARMATON
 Address P.O. BOX 378111 DENVER CO 80237-8111 Elevation 1942
 Co. Rep./Geo. JIM SPELLMAN Cont. ALLEN RIG #1 Est. Ft. of Pay _____
 Location: Sec. 19 Twp. 32S Rge. 19W Co. COMANCHE State KS

| | |
|----------------------------------|--|
| Interval Tested <u>4858-5005</u> | Drill Pipe Size <u>4.5" XH</u> |
| Anchor Length <u>147</u> | Wt. Pipe I.D. - 2.7 Ft. Run _____ |
| Top Packer Depth <u>4853</u> | Drill Collar - 2.25 Ft. Run _____ |
| Bottom Packer Depth <u>4858</u> | Mud Wt. <u>9.2</u> lb/Gal. |
| Total Depth <u>5005</u> | Viscosity <u>49</u> Filtrate <u>11.2</u> |

Tool Open @ 6:00 AM Initial Blow STRONG BLOW - BOTTOM OF BUCKET IN 6 MINUTES
 Final Blow STRONG-BOTTOM OF BUCKET IN 3 MINUTES
VERY WINDY - POSSIBLE FAINT ODOR OF GAS IN PIPE

Recovery - Total Feet 90 Flush Tool? NO

| | |
|--|---|
| Rec. <u>500</u> Feet of <u>GAS IN PIPE</u> | RELEASED MAR 14 1996 FROM CONFIDENTIAL |
| Rec. <u>90</u> Feet of <u>MUD</u> | |
| Rec. _____ Feet of _____ | |
| Rec. _____ Feet of _____ | |
| Rec. _____ Feet of _____ | |

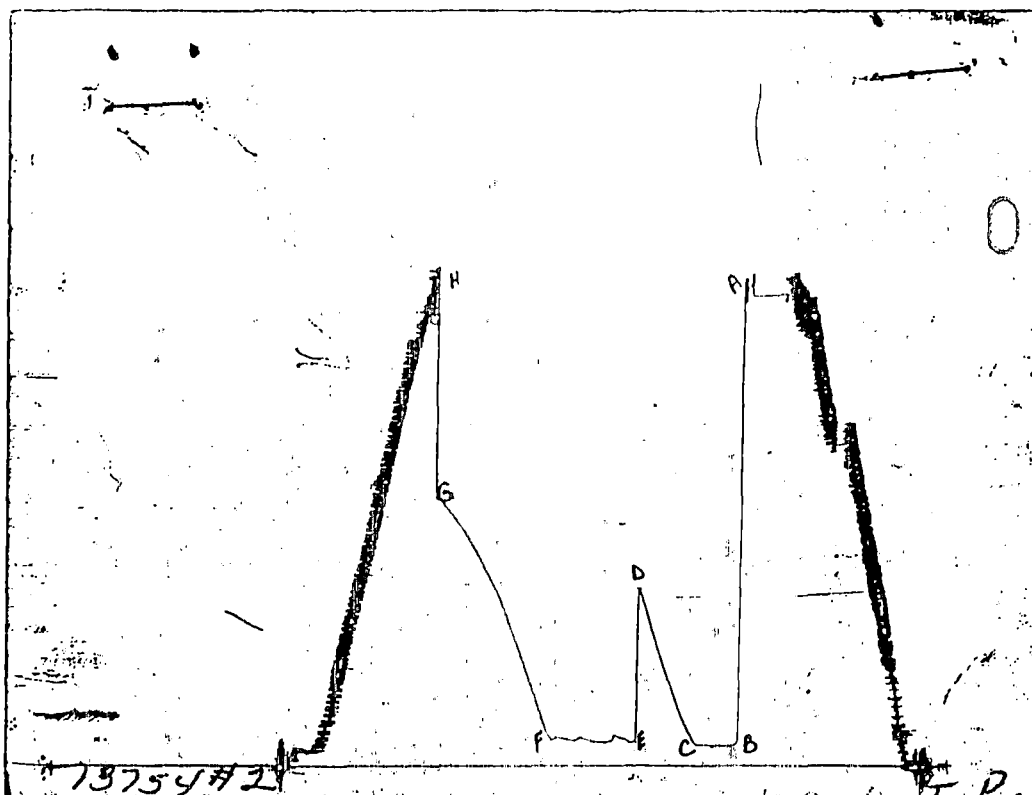
BHT 121 °F Gravity _____ °API @ _____ °F Corrected Gravity _____ °API
 RW _____ @ _____ °F Chlorides _____ ppm Recovery Chlorides 5500 ppm System

| | | |
|---|-------------------------------|----------------------------|
| (A) Initial Hydrostatic Mud <u>2396.4</u> PSI | AK1 Recorder No. <u>13754</u> | Range <u>4000</u> |
| (B) First Initial Flow Pressure <u>101.2</u> PSI | @ (depth) <u>4862</u> | w / Clock No. <u>27501</u> |
| (C) First Final Flow Pressure <u>101.2</u> PSI | AK1 Recorder No. <u>7437</u> | Range <u>4200</u> |
| (D) Initial Shut-in Pressure <u>875.2</u> PSI | @ (depth) <u>5001</u> | w / Clock No. <u>27567</u> |
| (E) Second Initial Flow Pressure <u>123.2</u> PSI | AK1 Recorder No. _____ | Range _____ |
| (F) Second Final Flow Pressure <u>131.4</u> PSI | @ (depth) _____ | w / Clock No. _____ |
| (G) Final Shut-in Pressure <u>1344.5</u> PSI | Initial Opening <u>30</u> | Final Flow <u>60</u> |
| (H) Final Hydrostatic Mud <u>2291.4</u> PSI | Initial Shut-in <u>45</u> | Final Shut-in <u>90</u> |

Our Representative DAN BANGLE

RECEIVED
 STATE CORPORATION COMMISSION
JAN 24 1994
 CONSERVATION DIVISION
 Wichita, Kansas

CHART PAGE



This is an actual photograph of recorder chart

RELEASED

MAR 1 4 1996

FROM CONFIDENTIAL

| | FIELD READING | OFFICE READING |
|----------------------------------|---------------|----------------|
| (A) INITIAL HYDROSTATIC MUD | 2390 | 2396.4 |
| (B) FIRST INITIAL FLOW PRESSURE | 98 | 101.2 |
| (C) FIRST FINAL FLOW PRESSURE | 98 | 101.2 |
| (D) INITIAL CLOSED-IN PRESSURE | 867 | 875.2 |
| (E) SECOND INITIAL FLOW PRESSURE | 118 | 123.2 |
| (F) SECOND FINAL FLOW PRESSURE | 127 | 131.4 |
| (G) FINAL CLOSED-IN PRESSURE | 1346 | 1344.5 |
| (H) FINAL HYDROSTATIC MUD | 2289 | 2291.4 |

RECEIVED
 STATE CORPORATION COMMISSION
 JAN 24 1994
 CONSERVATION DIVISION
 Wichita, Kansas

TRILOBITE TESTING, L.L.C.

P.O. Box 362 • Hays, Kansas 67601

Drill-Stem Test Data

ORIGINAL

Well Name REYNOLDS #2 Test No. 3 Date 10/2/93
Company HALLWOOD PETROLEUM Zone MISSISSIPPI
Address 45825 S ULSTER ST PARKWAY DENVER CO 80237' Elevation 1942
Co. Rep./Geo. JIM SPELLMAN Cont. ALLEN RIG #1 Est. Ft. of Pay 10
Location: Sec. 19 Twp. 32S Rge. 19W Co. COMANCHE State KS

Interval Tested 5050-5158 Drill Pipe Size 4.5" XH
Anchor Length 108 Wt. Pipe I.D. - 2.7 Ft. Run _____
Top Packer Depth 5045 Drill Collar - 2.25 Ft. Run _____
Bottom Packer Depth 5050 Mud Wt. 9.2 lb/Gal.
Total Depth 5158 Viscosity 48 Filtrate 9.2

Tool Open @ 9:45 AM Initial Blow STRONG BLOW BUILT TO BOTTOM OF BUCKET IN 4 MINUTES
ISI: BLED OFF BLOW - GAS TO SURFACE IN 2 MINUTES
Final Blow GAS TO SURFACE AS TOOL OPENED

Recovery - Total Feet 210 Flush Tool? NO
Rec. 210 Feet of GASSY MUD- 10% GAS / 90% MUD
Rec. _____ Feet of _____
Rec. _____ Feet of _____
Rec. _____ Feet of _____
Rec. _____ Feet of _____

RELEASED

MAR 14 1996

FROM CONFIDENTIAL

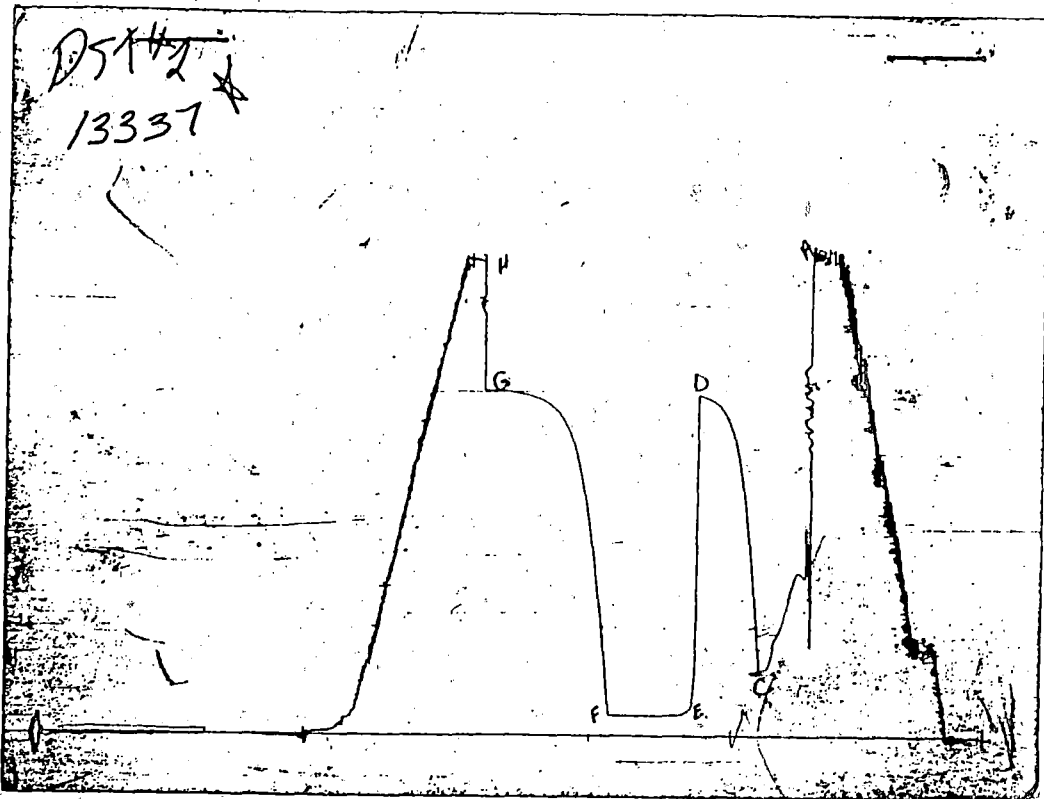
BHT 125 °F Gravity _____ °API @ _____ °F Corrected Gravity _____ °API
RW _____ @ _____ °F Chlorides _____ ppm Recovery Chlorides 6000 ppm System

(A) Initial Hydrostatic Mud 2420.1 PSI AK1 Recorder No. 13337 Range 3975
(B) First Initial Flow Pressure invalid PSI @ (depth) 5053 w/ Clock No. 31152
(C) First Final Flow Pressure 335.8 PSI AK1 Recorder No. 10333 Range 4050
(D) Initial Shut-in Pressure 1713.9 PSI @ (depth) 5155 w/ Clock No. 17640
(E) Second Initial Flow Pressure 105.7 PSI AK1 Recorder No. _____ Range _____
(F) Second Final Flow Pressure 94.6 PSI @ (depth) _____ w/ Clock No. _____
(G) Final Shut-in Pressure 1743.0 PSI Initial Opening 30 Final Flow _____
(H) Final Hydrostatic Mud 2388.4 PSI Initial Shut-in 45 Final Shut-in _____

BLP REPRESENTATIVE ROBERT COLLINS

RECEIVED
STATE COMMISSION
JAN 24 1994
CONSERVATION DIVISION
Hays, Kansas

CHART PAGE



This is an actual photograph of recorder chart

ORIGINAL

RELEASED

MAR 14 1996

FROM CONFIDENTIAL

| | FIELD READING | OFFICE READING |
|----------------------------------|---------------|----------------|
| (A) INITIAL HYDROSTATIC MUD | 2417 | 2420.1 |
| (B) FIRST INITIAL FLOW PRESSURE | invalid | invalid |
| (C) FIRST FINAL FLOW PRESSURE | 326 | 335.8 |
| (D) INITIAL CLOSED-IN PRESSURE | 1718 | 1713.9 |
| (E) SECOND INITIAL FLOW PRESSURE | 108 | 105.7 |
| (F) SECOND FINAL FLOW PRESSURE | 108 | 94.6 |
| (G) FINAL CLOSED-IN PRESSURE | 1728 | 1743 |
| (H) FINAL HYDROSTATIC MUD | 2387 | 2388.4 |

FINAL FLOW

RECORDER 13337

DST # 3

TIME(MIN) PRESSURE <> PRESSURE

| | | |
|------|-------|-------|
| 13.6 | 105.7 | 105.7 |
| 18.9 | 101.8 | -3.9 |
| 25.2 | 98.8 | -3.0 |
| 30.6 | 97.7 | -1.1 |
| 37.2 | 96.6 | -1.1 |
| 44.6 | 95.5 | -1.1 |
| 50.5 | 95.5 | 0.0 |
| 56.4 | 94.6 | -0.9 |
| 63.6 | 94.6 | 0.0 |

RELEASED

MAR 14 1996

FROM CONFIDENTIAL

ORIGINAL

RECEIVED
STATE CORPORATION COMMISSION

JAN 24 1994

CONSERVATION DIVISION
Wichita, Kansas

REYNOLDS #2
INITIAL

DST #3
SHUTIN
30 TOTAL FLOW TIME

Slope 420173.78 psi/cycle
P * 1832 psi

Log <>

| TIME(MIN) | Pws (psi) | Horn T | PRESSURE | Horn T |
|-----------|-----------|--------|----------|--------|
| 5.7 | 336.3 | 0.797 | 336.3 | 6 |
| 10 | 749.7 | 0.602 | 413.4 | 4 |
| 16.3 | 1221.3 | 0.453 | 471.6 | 3 |
| 21.7 | 1483.3 | 0.377 | 262.0 | 2 |
| 29.1 | 1608.2 | 0.308 | 124.9 | 2 |
| 33.9 | 1662.5 | 0.275 | 54.3 | 2 |
| X 40.7 | 1699.4 | 0.240 | 36.9 | 2 |
| X 47.2 | 1713.9 | 0.214 | 14.5 | 2 |

ORIGINAL

REYNOLDS #2
FINAL

DST #3
SHUTIN
90 TOTAL FLOW TIME

Slope 178287.56 psi/cycle
P * 1793 psi

Log <>

| | Pws (psi) | Horn T | PRESSURE | Horn T | |
|---|-----------|--------|----------|--------|----|
| | 9.9 | 545.8 | 1.004 | 545.8 | 10 |
| | 15.6 | 960.7 | 0.831 | 414.9 | 7 |
| | 23.5 | 1263.5 | 0.684 | 302.8 | 5 |
| | 29.4 | 1473.0 | 0.609 | 209.5 | 4 |
| | 35.6 | 1568.1 | 0.548 | 95.1 | 4 |
| | 42.9 | 1644.1 | 0.491 | 76.0 | 3 |
| | 48.1 | 1675.0 | 0.458 | 30.9 | 3 |
| | 56 | 1705.3 | 0.416 | 30.3 | 3 |
| | 61.3 | 1716.2 | 0.392 | 10.9 | 2 |
| | 67.6 | 1725.2 | 0.368 | 9.0 | 2 |
| X | 73.3 | 1734.5 | 0.348 | 9.3 | 2 |
| | 79.3 | 1741.4 | 0.329 | 6.9 | 2 |
| | 86.7 | 1742.5 | 0.309 | 1.1 | 2 |
| X | 91.4 | 1743.0 | 0.298 | 0.5 | 2 |

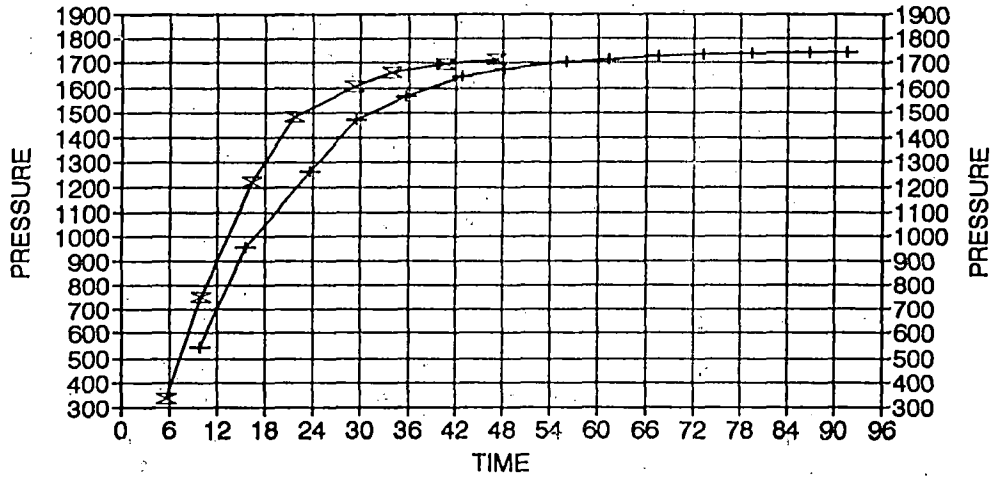
RELEASED

MAR 14 1996

FROM CONFIDENTIAL

ORIGINAL

REYNOLDS #2 / DST #3 DELTA T DELTA P



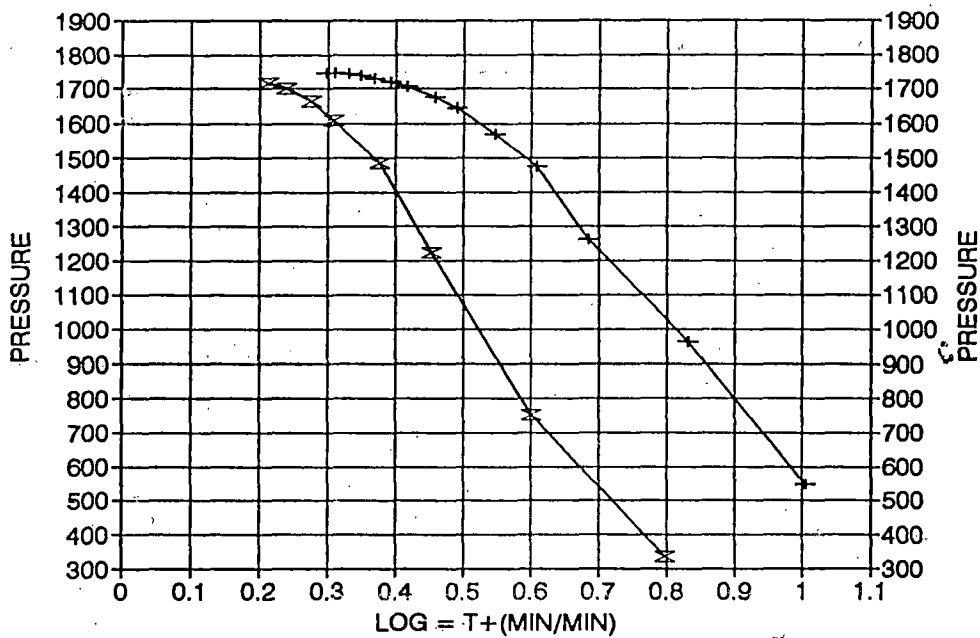
—x— INITIAL —+— FINAL

RELEASED

MAR 14 1996

FROM CONFIDENTIAL

HORNER PLOT



GAS VOLUME REPORT

ORIGINAL

HALLWOOD PETROLEUM

REYNOLDS #2

DST # 3

| MIN | PSIG | ORIFICE | MCF/D | MIN | PSIG | ORIFICE | MCF/D |
|-----|------|---------|-------|-----|------|---------|-------|
| | | | | 10 | 3 | 1 | 242 |
| | | | | 20 | 2.5 | 0.75 | 121 |
| | | | | 30 | 2.5 | 0.75 | 121 |
| | | | | 40 | 2.5 | 0.75 | 121 |
| | | | | 50 | 2 | 0.75 | 108 |
| | | | | 60 | 2 | 0.75 | 108 |

RELEASED

MAR 14 1996

FROM CONFIDENTIAL

Remarks: GAS TO SURFACE IN 2 MINUTES/GAS WILL BURN

ORIGINAL

NATURAL GAS ANALYSIS REPORT

Sampled by:
Trilobite Testing
Hays, Kansas
Scott City, Kansas
Phone: 800-728-5369
Fax: 913-625-5620

Analyzed by:
Caraway Analytical
728 North Roosevelt
Liberal, Kansas 67901
Phone: 316-324-8388
Fax: 316-626-7108

Lab Number: 93184
Sample From: Reynolds #2
Producer: Hallwood Petro
Date:
Time:
Sampler:
Source:

Analyzed: 10/08/93
Pressure:
Temperature:
Location: 19-328-19W
County: Comanche
State: Kansas
Formation: Mississippi

| | | Mole % | GFN |
|----------------|------|--------|-------|
| Helium | He: | 0.182 | 0.000 |
| Oxygen | O2: | 0.000 | 0.000 |
| Nitrogen | N2: | 1.771 | 0.000 |
| Carbon Dioxide | CO2: | 0.000 | 0.000 |
| Methane | C1: | 92.389 | 0.000 |
| Ethane | C2: | 3.143 | 0.841 |
| Propane | C3: | 1.181 | 0.325 |
| Iso Butane | iC4: | 0.155 | 0.051 |
| Normal Butane | nC4: | 0.348 | 0.110 |
| Iso Pentane | iC5: | 0.094 | 0.034 |
| Normal Pentane | nC5: | 0.115 | 0.042 |
| Hexanes Plus | C6+: | 0.622 | 0.271 |

RELEASED

MAR 14 1996

FROM CONFIDENTIAL

TOTAL: 100.000 1.674
Z Fact: 0.9977
SP.GR.: 0.6160
BTU (SAT): 1061.3 @ 14.73 psia
BTU (DRY): 1080.1 @ 14.73 psia

COMMENTS:
Test 2

TRILOBITE TESTING, L.L.C.

P.O. Box 362 • Hays, Kansas 67601

Drill-Stem Test Data

ORIGINAL

Well Name REYNOLDS #2 Test No. 4 Date 10/6/93
Company HALLWOOD PETROLEUM INC. Zone VIOLA
Address P.O. BOX 378111 DENVER CO 80237-8111 Elevation 1942
Co. Rep./Geo. JIM SPELLMAN Cont. ALLEN RIG #1 Est. Ft. of Pay _____
Location: Sec. 19 Twp. 32S Rge. 19W Co. COMANCHE State KS

Interval Tested 5796-5866 Drill Pipe Size 4.5" XH
Anchor Length 70 Wt. Pipe I.D. - 2.7 Ft. Run _____
Top Packer Depth 5791 Drill Collar - 2.25 Ft. Run _____
Bottom Packer Depth 5796 Mud Wt. 8.9 lb/Gal.
Total Depth 5866 Viscosity 48 Filtrate 8.4

Tool Open @ _____ Initial Blow HIT BRIDGE @ APPROX. 1030' - LAID TOOL DOWN
TRIPPED BACK IN HOLE WITH BIT
Final Blow _____

Recovery - Total Feet _____ Flush Tool? NO

RELEASED

Rec. _____ Feet of _____
Rec. _____ Feet of MAR 14 1996
Rec. _____ Feet of _____
Rec. _____ Feet of FROM CONFIDENTIAL
Rec. _____ Feet of _____

BHT _____ °F Gravity _____ °API @ _____ °F Corrected Gravity _____ °API
RW _____ @ _____ °F Chlorides _____ ppm Recovery Chlorides 4500 ppm System

(A) Initial Hydrostatic Mud _____ PSI AK1 Recorder No. 13337 Range 3975

(B) First Initial Flow Pressure _____ PSI @ (depth) 5800 w / Clock No. 17639

(C) First Final Flow Pressure _____ PSI AK1 Recorder No. 10333 Range 4050

(D) Initial Shut-in Pressure _____ PSI @ (depth) 5863 w / Clock No. 17640

(E) Second Initial Flow Pressure _____ PSI AK1 Recorder No. _____ Range _____

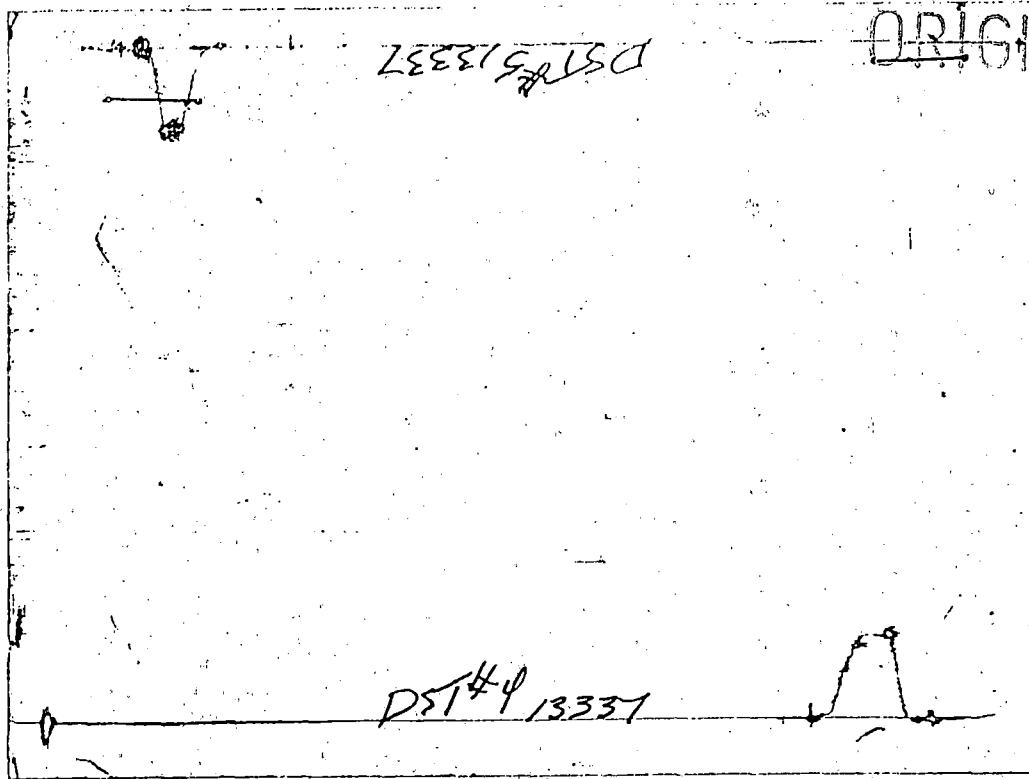
(F) Second Final Flow Pressure _____ PSI @ (depth) _____ w / Clock No. _____

(G) Final Shut-in Pressure _____ PSI Initial Opening _____ Final Flow _____

(H) Final Hydrostatic Mud _____ PSI Initial Shut-in _____ Final Shut-in _____

Our Representative ROBERT COLLINS

CHART PAGE



This is an actual photograph of recorder chart

FIELD
READING

OFFICE
READING

- (A) INITIAL HYDROSTATIC MUD
- (B) FIRST INITIAL FLOW PRESSURE
- (C) FIRST FINAL FLOW PRESSURE
- (D) INITIAL CLOSED-IN PRESSURE
- (E) SECOND INITIAL FLOW PRESSURE
- (F) SECOND FINAL FLOW PRESSURE
- (G) FINAL CLOSED-IN PRESSURE
- (H) FINAL HYDROSTATIC MUD

RELEASED

MAR 14 1996

FROM CONFIDENTIAL

TRILOBITE TESTING, L.L.C.

P.O. Box 362 • Hays, Kansas 67601

Drill-Stem Test Data

ORIGINAL

Well Name REYNOLDS #2 Test No. 5 Date 10/6/93
Company HALLWOOD PETROLEUM INC. Zone VIOLA
Address P.O. BOX 378111 DENVER CO 80237-8111 Elevation 1942
Co. Rep./Geo. JIM SPELLMAN Cont. ALLEN RIG #1 Est. Ft. of Pay _____
Location: Sec. 19 Twp. 32S Rge. 19W Co. COMANCHE State KS

Interval Tested 5796-5866 Drill Pipe Size 4.5" XH
Anchor Length 70 Wt. Pipe I.D. - 2.7 Ft. Run _____
Top Packer Depth 5791 Drill Collar - 2.25 Ft. Run 119
Bottom Packer Depth 5796 Mud Wt. 9 lb/Gal.
Total Depth 5866 Viscosity 50 Filtrate 8.8

Tool Open @ _____ Initial Blow HIT BRIDGE @ APPROX. 1030' - LAID TOOL DOWN
TRIPPED BACK IN HOLE WITH BIT

Final Blow _____

Recovery - Total Feet _____ Flush Tool? NO

Rec. _____ Feet of _____
Rec. _____ Feet of _____
Rec. _____ Feet of _____
Rec. _____ Feet of _____
Rec. _____ Feet of _____

RELEASED

MAR 14 1996

FROM CONFIDENTIAL

BHT _____ °F Gravity _____ °API @ _____ °F Corrected Gravity _____ °API
RW _____ @ _____ °F Chlorides _____ ppm Recovery Chlorides 5000 ppm System

(A) Initial Hydrostatic Mud _____ PSI AK1 Recorder No. 13337 Range 3975

(B) First Initial Flow Pressure _____ PSI @ (depth) 5800 w / Clock No. 17639

(C) First Final Flow Pressure _____ PSI AK1 Recorder No. 10333 Range 4050

(D) Initial Shut-in Pressure _____ PSI @ (depth) 5863 w / Clock No. 17640

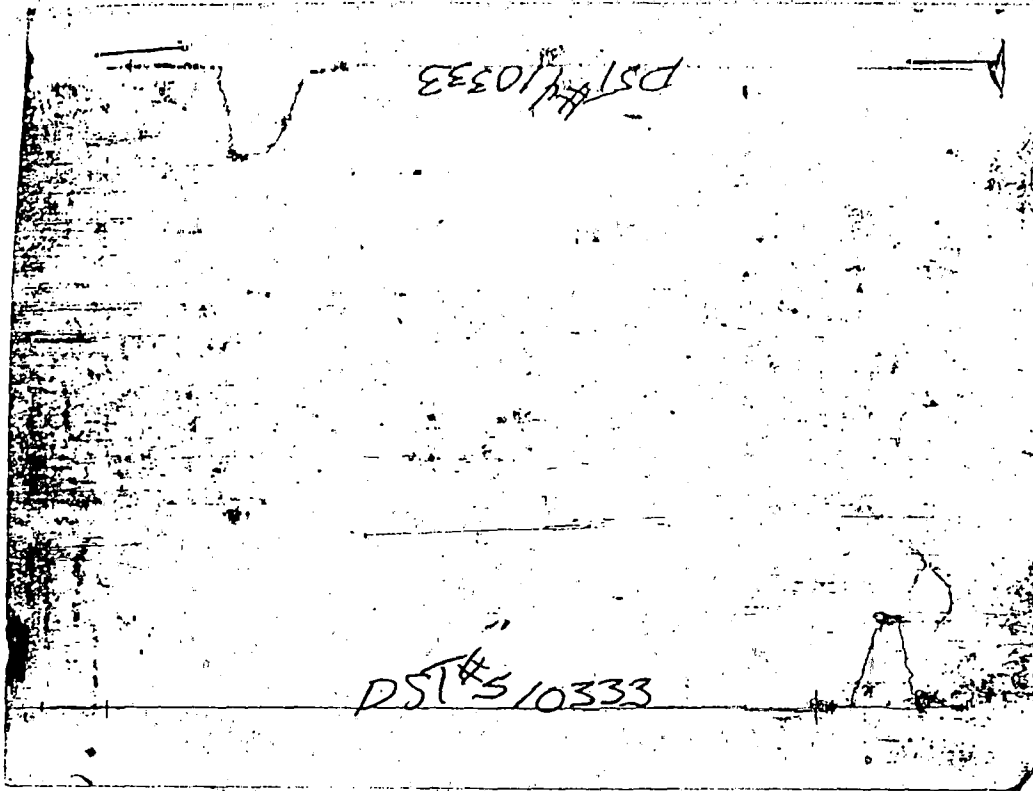
(E) Second Initial Flow Pressure _____ PSI AK1 Recorder No. _____ Range _____

(F) Second Final Flow Pressure _____ PSI @ (depth) _____ w / Clock No. _____

(G) Final Shut-in Pressure _____ PSI Initial Opening _____ Final Flow _____

(H) Final Hydrostatic Mud _____ PSI Initial Shut-in _____ Final Shut-in _____

Our Representative ROBERT COLLINS



This is an actual photograph of recorder chart

FIELD
READING

OFFICE
READING

- (A) INITIAL HYDROSTATIC MUD
- (B) FIRST INITIAL FLOW PRESSURE
- (C) FIRST FINAL FLOW PRESSURE
- (D) INITIAL CLOSED-IN PRESSURE
- (E) SECOND INITIAL FLOW PRESSURE
- (F) SECOND FINAL FLOW PRESSURE
- (G) FINAL CLOSED-IN PRESSURE
- (H) FINAL HYDROSTATIC MUD

RELEASED

MAR 14 1996

FROM CONFIDENTIAL

CUSTOMER COPY

REMIT TO: P.O. BOX 951046 *Bruce*
DALLAS, TX 75395-1046



INVOICE

ORIGINAL

| INVOICE NO. | DATE |
|-------------|------------|
| 509904 | 09/23/1993 |

| WELL LEASE NO./PROJECT | WELL/PROJECT LOCATION | STATE | OWNER | | |
|------------------------|-----------------------|-------------------------|----------------------|---------------|----------|
| REYNOLDS 2 | COMANCHE | KS | SAME | | |
| SERVICE LOCATION | CONTRACTOR | JOB PURPOSE | TICKET DATE | | |
| PRATT | ALLEN DRLG. | CEMENT CONDUCTOR CASING | 09/23/1993 | | |
| ACCT. NO. | CUSTOMER AGENT | VENDOR NO. | CUSTOMER P.O. NUMBER | SHIPPED VIA | FILE NO. |
| 355880 | GEORGE HUTTON | | | COMPANY TRUCK | 56816 |

AFE #3122003
800.040

HALLWOOD PETROLEUM, INC.
915 PATTON ROAD
GREAT BEND, KS 67530

DIRECT CORRESPONDENCE TO:
OKLAHOMA TOWER
210 WEST PARK AVENUE
SUITE 2000
OKLAHOMA CITY, OK 73102-5601

| REFERENCE NO. | DESCRIPTION | QUANTITY | UM | UNIT PRICE | AMOUNT |
|------------------------------|--------------------------------|----------|-----|------------|--------|
| PRICING AREA - MID CONTINENT | | | | | |
| 000-117 | MILEAGE | 52 | MI | 2.75 | 143.00 |
| | | 1 | UNT | | |
| 001-016 | CEMENTING CASING | 108 | FT | 575.00 | 575.00 |
| | | 1 | UNT | | |
| 030-018 | CEMENTING PLUG 5W, PLASTIC TOP | 13.375 | IN | 335.00 | 335.00 |
| | | 1 | EA | | |
| 40 | CENTRALIZER 13-3/8" X 17.5" | 2 | EA | 89.00 | 178.00 |
| 807.93079 | | | | | |
| 320 | CEMENT BASKET 13 3/8" | 1 | EA | 192.00 | 192.00 |
| 800.8894 | | | | | |
| 504-136 | CEMENT - 40/60 POZMIX STANDARD | 110 | SK | 5.68 | 624.80 |
| 504-308 | CEMENT - STANDARD | 36 | SK | 6.96 | 250.56 |
| 506-105 | POZMIX A | 1632 | LB | .055 | 89.76 |
| 509-406 | ANHYDROUS CALCIUM CHLORIDE | 5 | SK | 28.25 | 141.25 |
| 500-207 | BULK SERVICE CHARGE | 180 | CFT | 1.35 | 243.00 |
| 500-306 | MILEAGE CMTG MAT DEL OR RETURN | 384.64 | TMI | .95 | 365.41 |

INVOICE SUBTOTAL 3,137.78

DISCOUNT-(BID) 627.55-

INVOICE BID AMOUNT 2,510.23

*-KANSAS STATE SALES TAX 94.86

*-PRATT COUNTY SALES TAX 19.35

RELEASED
MAR 14 1996
FROM CONFIDENTIAL

RECEIVED
STATE CORPORATION COMMISSION
JAN 24 1994

INVOICE TOTAL - PLEASE PAY THIS AMOUNT ===== \$2,624.44

AFFIX JOB TKT

TERMS: If Customer does not have an approved open account with Halliburton, all sums due are payable in cash at the time of performance of services or delivery of equipment, products or materials. If customer has an approved open account, invoices are payable on the twentieth day after date of invoice. Customer agrees to pay interest on any unpaid balance from the date payable until paid at the highest lawful contract rate applicable, but never



CHARGE TO:
Hallwood Petroleum Inc.
 ADDRESS
 CITY, STATE, ZIP CODE

TICKET

No. 509904 - 1

PAGE 1 OF 2

FORM 1906 R-12

| | | | | | | | |
|---|--|-----------------------|---------------------------|-------------------------------|--------------------------|-----------------|---------------|
| 1. SERVICE LOCATIONS 25555 | WELL/PROJECT NO. 2 | LEASE Reynolds | COUNTY/PARISH Comanche | STATE KS | CITY/OFFSHORE LOCATION | DATE 9-22-93 | OWNER 944e |
| 2. TICKET TYPE <input checked="" type="checkbox"/> SERVICE <input type="checkbox"/> SALES | NITROGEN JOB? <input checked="" type="checkbox"/> YES <input checked="" type="checkbox"/> NO | CONTRACTOR Allen | RIG NAME/NO. Rig 1 | SHIPPED VIA CT | DELIVERED TO Location | ORDER NO. | |
| 3. WELL TYPE 0:1 | WELL CATEGORY 01 | JOB PURPOSE Dev 01 | WELL PERMIT NO. 005 | WELL LOCATION 15-033-20874 | Land | | |
| 4. REFERRAL LOCATION | INVOICE INSTRUCTIONS Set Conductor Pipe 2070 | | | | | | |

RECEIVED CORPORATION COMPTON
 JAN 24 1994
 CONSERVATION DIVISION
 Wichita, Kansas

| PRICE REFERENCE | SECONDARY REFERENCE/ PART NUMBER | ACCOUNTING | | | TIME | DESCRIPTION | QTY. | | U/M | | UNIT PRICE | STATE | AMOUNT |
|-----------------|-------------------------------------|------------|------|----|------|--------------|------|-----|--------|-----|------------|-------|--------|
| | | LOC | ACCT | DF | | | | | | | | | |
| 000-117 | | 1 | | | | MILEAGE | 52 | mi | 1 | | 2.75 | | 143.00 |
| 001-016 | | 1 | | | | Pump Charge | 8 | hrs | 108 | ft. | | | 575.00 |
| 030-018 | | 1 | | | | Plug | 1 | eq | 13 3/4 | in | | | 335.00 |
| 40 | 807.93079 | 1 | | | | Centralizers | 2 | eq | 13 3/8 | in | 89.00 | | 178.00 |
| 320 | 800.8894 | 1 | | | | Basket | 1 | eq | 13 3/8 | in | | | 192.00 |
| | | | | | | | | | | | | | |

ORIGINAL

RELEASED

MAR 14 1996

FROM CONFIDENTIAL

LEGAL TERMS: Customer hereby acknowledges and agrees to the terms and conditions on the reverse side hereof which include, but are not limited to, PAYMENT, RELEASE, INDEMNITY, and LIMITED WARRANTY provisions.

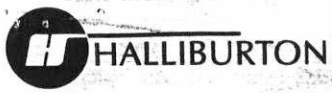
CUSTOMER OR CUSTOMER'S AGENT SIGNATURE
 X *George Hutton*
 DATE SIGNED 9-22-93 TIME SIGNED 11:00 P.M.

SUB SURFACE SAFETY VALVE WAS:
 PULLED & RETURN PULLED RUN

| | | | | | | |
|---|-----------------|---|--|------------|-----------|--|
| TYPE LOCK | DEPTH | SURVEY | AGREE | UN-DECIDED | DIS-AGREE | PAGE TOTAL 1423.00 |
| BEAN SIZE | SPACERS | | OUR EQUIPMENT PERFORMED WITHOUT BREAKDOWN? | | | |
| TYPE OF EQUALIZING SUB. | CASING PRESSURE | WE UNDERSTOOD AND MET YOUR NEEDS? | | | | |
| TUBING SIZE | TUBING PRESSURE | OUR SERVICE WAS PERFORMED WITHOUT DELAY? | | | | |
| WELL DEPTH | | WE OPERATED THE EQUIPMENT AND PERFORMED JOB CALCULATIONS SATISFACTORILY? | | | | |
| TREE CONNECTION | TYPE VALVE | ARE YOU SATISFIED WITH OUR SERVICE? <input type="checkbox"/> YES <input type="checkbox"/> NO | | | | SUB-TOTAL APPLICABLE TAXES WILL BE ADDED ON INVOICE 3137.78 |
| <input type="checkbox"/> do <input type="checkbox"/> do not require IPC (Instrument Protection). <input type="checkbox"/> Not offered | | <input type="checkbox"/> CUSTOMER DID NOT WISH TO RESPOND | | | | |

CUSTOMER ACCEPTANCE OF MATERIALS AND SERVICES The customer hereby acknowledges receipt of the materials and services listed on this ticket

| | | | | |
|---|--|--|----------------|----------------------|
| CUSTOMER OR CUSTOMER'S AGENT (PLEASE PRINT) <i>George Hutton</i> | CUSTOMER OR CUSTOMER'S AGENT (SIGNATURE) X <i>George Hutton</i> | HALLIBURTON OPERATOR/ENGINEER <i>Alan Byaly</i> | EMP # 85826 | HALLIBURTON APPROVAL |
|---|--|--|----------------|----------------------|



JOB SUMMARY

HALLIBURTON DIVISION
HALLIBURTON LOCATION

Mid Cont
Pratt

BILLED ON TICKET NO. 509904

CUSTOMER: Halliwood
LEASE: Reynolds
WELL NO.: 2
JOB TYPE: Conductor
DATE: 9-23-93

WELL DATA

FIELD _____ SEC. 19 TWP. 32S RING. 19W COUNTY Comanche STATE KS

FORMATION NAME _____ TYPE _____

FORMATION THICKNESS _____ FROM _____ TO _____

INITIAL PROD: OIL _____ BPD. WATER _____ BPD. GAS _____ MCFD

PRESENT PROD: OIL _____ BPD. WATER _____ BPD. GAS _____ MCFD

COMPLETION DATE _____ MUD TYPE _____ MUD WT. _____

PACKER TYPE _____ SET AT _____

BOTTOM HOLE TEMP. _____ PRESSURE _____

MISC. DATA _____ TOTAL DEPTH _____

| | NEW USED | WEIGHT | SIZE | FROM | TO | MAXIMUM PSI ALLOWABLE |
|--------------|----------|--------|--------|------|------|-----------------------|
| CASING | | 48 # | 13 3/8 | KB | 108' | |
| LINER | | | | | | |
| TUBING | | | | | | |
| OPEN HOLE | | | | 108 | 111 | SHOTS/FT. |
| PERFORATIONS | | | | | | |
| PERFORATIONS | | | | | | |
| PERFORATIONS | | | | | | |

ORIGINAL

JOB DATA

| CALLS OUT | ON LOCATION | JOB STARTED | JOB COMPLETED |
|------------|-------------|-------------|---------------|
| 9-22-93 | 9-22-93 | 9-22-93 | 9-23-93 |
| DATE | DATE | DATE | DATE |
| TIME 17:30 | TIME 20:00 | TIME 22:00 | TIME 03:30 |

PERSONNEL AND SERVICE UNITS

| NAME | UNIT NO. & TYPE | LOCATION |
|----------------|-----------------|----------|
| G Byrd 85864 | 52504 | Pratt |
| D Bigler 61690 | RCM | KS |
| | 4142 | " |
| B Mawie 82663 | Bulk | " |

RELEASED

MAR 14 1996

FROM CONFIDENTIAL

TOOLS AND ACCESSORIES

| TYPE AND SIZE | QTY. | MAKE |
|-------------------------|------|------|
| FLOAT COLLAR | | |
| FLOAT SHOE | | |
| GUIDE SHOE | | |
| CENTRALIZERS 5-4 13 3/8 | 2 | MES |
| BOTTOM PLUG | | |
| TOP PLUG 5W 13 3/8 | 1 | " |
| HEAD | | |
| PACKER | | |
| OTHER Basket | 1 | " |

MATERIALS

TREAT. FLUID _____ DENSITY _____ LB./GAL. °API

DISPL. FLUID _____ DENSITY _____ LB./GAL. °API

PROP. TYPE _____ SIZE _____ LB.

PROP. TYPE _____ SIZE _____ LB.

ACID TYPE _____ GAL. _____ %

ACID TYPE _____ GAL. _____ %

ACID TYPE _____ GAL. _____ %

SURFACTANT TYPE _____ GAL. _____ IN

NE AGENT TYPE _____ GAL. _____ IN

FLUID LOSS ADD. TYPE _____ GAL.-LB. _____ IN

GELLING AGENT TYPE _____ GAL.-LB. _____ IN

FRIC. RED. AGENT TYPE _____ GAL.-LB. _____ IN

BREAKER TYPE _____ GAL.-LB. _____ IN

BLOCKING AGENT TYPE _____ GAL.-LB. _____

PERFPAC BALLS TYPE _____ QTY. _____

OTHER _____

OTHER _____

DEPARTMENT _____

DESCRIPTION OF JOB
Total Pipe 112 ft

JOB DONE THRU: TUBING CASING ANNULUS TBG./ANN.

CUSTOMER REPRESENTATIVE X George Sutton

HALLIBURTON OPERATOR Tom Byrd COPIES REQUESTED _____

CEMENT DATA

| STAGE | NUMBER OF SACKS | CEMENT | BRAND | BULK SACKED | ADDITIVES | YIELD CU.FT./SK. | MIXED LBS./GAL. |
|-------|-----------------|--------|-------|-------------|--------------|------------------|-----------------|
| | 110 | 40/60 | | B | 27 6cc 37 CC | 1.3 | 14.00 |
| | 60 | 40/60 | | B | 37. CC | 1.14 | 14.65 |

PRESSURES IN PSI

CIRCULATING _____ DISPLACEMENT _____

BREAKDOWN _____ MAXIMUM _____

AVERAGE _____ FRACTURE GRADIENT _____

SHUT-IN: INSTANT _____ 5-MIN _____ 15-MIN _____

HYDRAULIC HORSEPOWER _____

ORDERED _____ AVAILABLE _____ USED _____

AVERAGE RATES IN BPM _____

TREATING _____ DISPL. _____ OVERALL _____

CEMENT LEFT IN PIPE _____

FEET 15 REASON Request

SUMMARY

VOLUMES

PRESLUSH: BBL.-GAL. _____ TYPE _____

LOAD & BKDN: BBL.-GAL. _____ PAD: BBL.-GAL. _____

TREATMENT: BBL.-GAL. _____ DISPL. BBL.-GAL. 15.2

CEMENT SLURRY: BBL.-GAL. 37.6

TOTAL VOLUME: BBL.-GAL. _____

REMARKS RECEIVED
STAT. REGULATION COMMISSION
34.7 PSI PSI
JAN 24 1994

CONSERVATION DIVISION
Wichita, Kansas

FIELD OFFICE

JOB LOG FORM 2013 R-3

| | | | | |
|-----------------------------|----------------------|--------------------------|------------------------------|-----------------------------|
| CUSTOMER Hallwood | WELL NO. Z | LEASE Reynolds | JOB TYPE Conductor | TICKET NO. 509904 |
|-----------------------------|----------------------|--------------------------|------------------------------|-----------------------------|

| CHART NO. | TIME | RATE (BPM) | VOLUME (BBL) (GAL) | PUMPS | | PRESSURE (PSI) | | DESCRIPTION OF OPERATION AND MATERIALS |
|-----------|-------|------------|--------------------|-------|---|----------------|--------|---|
| | | | | T | C | TUBING | CASING | |
| | 20:00 | | | | | | | On Location |
| | 10:10 | | | | | | | Run Float equipment ^{Curtin 1-3} _{Basket on #5} |
| | 11:00 | | | | | | | — Break Circulation ^{circulate 25+5} _{Down} |
| | 02:25 | 3 | | | | | 50 | Start Mixing |
| | 02:38 | 3 | 37.6 | | | | 50 | Finish Mixing |
| | 02:39 | | | | | | | Release Plug |
| | 02:40 | 3 | 0 | | | | 0 | Start Displacement |
| | 02:45 | 3 | 15.2 | | | | 100 | Plug Down By Wireline 100' |
| | | | | | | | | Good Returns 40' Disp |
| | 03:00 | | | | | | | Wash up |
| | 02:15 | | | | | | | Shut In |
| | 03:30 | | | | | | | Job Complete |
| | | | | | | | | Thanks |
| | | | | | | | | Glen, Doug |

ORIGINAL

RELEASED

MAR 14 1996

FROM CONFIDENTIAL

RECEIVED
STATE CORPORATION COMMISSION

JAN 24 1994

CONSERVATION DIVISION
Wichita, Kansas

ORIGINAL



REMIT TO: P.O. BOX 951046 *Bruce* DALLAS, TX 75395-1046

INVOICE RECEIVED SEP 30 1993 KANSAS DIST

| INVOICE NO. | DATE |
|-------------|------------|
| 509516 | 09/23/1993 |

| | | | | | |
|--|--|--|--|-------------------------------------|----------------------------------|
| WELL LEASE NO./PROJECT NAME REYNOLDS 2 | | WELL/PROJECT LOCATION COMANCHE | | STATE KS | OWNER SAME |
| SERVICE LOCATION PRATT | | CONTRACTOR ALLEN DRILLING | JOB PURPOSE SURFACE CEMENT INTERMEDIATE CASING | | TICKET DATE 09/23/1993 |
| ACCT. NO. 355880 | CUSTOMER AGENT GEORGE HUTTON | VENDOR NO. | CUSTOMER P.O. NUMBER | SHIPPED VIA COMPANY TRUCK | FILE NO. 56933 |

ORIGINAL

HALLWOOD PETROLEUM, INC.
915 PATTON ROAD
GREAT BEND, KS 67530

DIRECT CORRESPONDENCE TO:
OKLAHOMA TOWER
210 WEST PARK AVENUE
SUITE 2000
OKLAHOMA CITY, OK 73102-5601

| REFERENCE NO. | DESCRIPTION | QUANTITY | UM | UNIT PRICE | AMOUNT |
|------------------------------|--------------------------------|----------|-----|------------|----------|
| PRICING AREA - MID CONTINENT | | | | | |
| 000-117 | MILEAGE | 52 | MI | 2.75 | 143.00 |
| | | 1 | UNT | | |
| 001-016 | CEMENTING CASING | 720 | FT | 825.00 | 825.00 |
| | | 1 | UNT | | |
| 030-016 | CEMENTING PLUG 5W ALUM TOP | 5/8 | IN | 120.00 | 120.00 |
| 40 | CENTRALIZER 8-5/8" X 12.25" | 1 | EA | | |
| 807.93059 | | 4 | EA | 72.00 | 288.00 |
| 320 | CEMENT BASKET 8 5/8" | 2 | EA | 122.00 | 244.00 |
| 800.8888 | | | | | |
| 504-316 | CEMENT - HALL. LIGHT STANDARD | 265 | SK | 6.43 | 1,703.95 |
| 509-406 | ANHYDROUS CALCIUM CHLORIDE | 7 | SK | 28.25 | 197.75 |
| 507-210 | FLOCELE | 132 | LB | 1.40 | 184.80 |
| 504-308 | CEMENT - STANDARD | 132 | SK | 6.96 | 918.72 |
| 506-105 | POZMIX A | 5984 | LB | .055 | 329.12 |
| 509-406 | ANHYDROUS CALCIUM CHLORIDE | 6 | SK | 28.25 | 169.50 |
| 507-210 | FLOCELE | 110 | LB | 1.40 | 154.00 |
| 500-207 | BULK SERVICE CHARGE | 528 | CFT | 1.35 | 712.80 |
| 500-306 | MILEAGE CMTG MAT DEL OR RETURN | 1131.416 | TMI | .95 | 1,074.85 |

RELEASED MAR 14 1996

FROM CONFIDENTIAL

INVOICE SUBTOTAL 7,065.49

DISCOUNT - (BID PROPERTY NAME *Reynolds #2*) 1,413.09-
INVOICE BID AMOUNT 5,652.40

* - KANSAS STATE SALES TAX *1,230,400.0* 238.99
* - PRATT COUNTY SALES TAX *3122003* 48.77

ACCOUNT # *800 040*
Signature & *George Hutton*
DATE

INVOICE TOTAL - PLEASE PAY THIS AMOUNT 7,940.16

RECEIVED STATE CORPORATION COMMISSION JAN 24 1994

AFFIX JOB TKT

TERMS: If Customer does not have an approved open account with Halliburton, all sums due are payable in cash at the time of performance of services or delivery of equipment, products or materials. If customer has an approved open account, invoices are payable on the twentieth day after date of invoice. Customer agrees to pay interest on any unpaid balance from the date payable until paid at the highest lawful contract rate applicable, but never to exceed 18% per annum. In the event Halliburton employs an attorney for collection of any account, Customer

RESERVATION DIVISION Wichita, Kansas



CHARGE TO:
 HOLLAND PETROLEUM
 ADDRESS
 4582 S. USTER ST. PARKWAY SUITE 1700
 CITY, STATE, ZIP CODE
 DENVER CO 80232

COPY

TICKET

No. 509516 - 7

* SEE INVOICE INSTRUCTIONS

FORM 1906 R-12

| | | | | | | | | |
|---------------------------------------|--|---|------------------------------|--------------------------------|------------------------------|------------------|----------------------------|--|
| SERVICE LOCATIONS 1. PAT, KS 25515 | WELL/PROJECT NO. 2 | LEASE REYNOLDS | COUNTY/PARISH COMANCHE | STATE KS | CITY/OFFSHORE LOCATION | DATE 09-23-93 | OWNER HOLLAND PETROLEUM | |
| 2. | TICKET TYPE <input checked="" type="checkbox"/> SERVICE | NITROGEN JOB? <input type="checkbox"/> YES <input checked="" type="checkbox"/> NO | CONTRACTOR ALLEN DRILLING | RIG NAME/NO. ALLEN DRILLING | SHIPPED VIA 52504 WEBSITE | DELIVERED TO | ORDER NO. | |
| 3. | WELL TYPE | WELL CATEGORY | JOB PURPOSE | WELL PERMIT NO. | WELL LOCATION | 19-325-19W | | |
| 4. | REFERRAL LOCATION | INVOICE INSTRUCTIONS * SEND INVOICE TO → 915 PATTON ROAD GREAT BEND KS 67530 ATTN: MR HUTTON * | | | | | 20% | |

| PRICE REFERENCE | SECONDARY REFERENCE/ PART NUMBER | ACCOUNTING | | | TIME | DESCRIPTION | QTY. | | UNIT PRICE | AMOUNT |
|-----------------|-------------------------------------|------------|------|----|------|---------------------|------|-----|------------|--------|
| | | LOC | ACGT | DF | | | U/M | U/M | | |
| 000-117 | | 1 | | | | MILEAGE | 52 | mi | 2.75 | 143.00 |
| 001-016 | | 1 | | | | PUMP CHARGE | 6 | HR | 825.00 | 825.00 |
| 030-016 | | 1 | | | | TOP PLY 5W ALUMINUM | 1 | EA | 120.00 | 120.00 |
| 40 | 807.93059 | 1 | | | | CENTRALIZER S-4 | 4 | EA | 72.00 | 288.00 |
| 320 | 800.8888 | 1 | | | | BASKET | 2 | EA | 122.00 | 244.00 |

ORIGINAL

RELEASED

MAY 14 1996

FROM CONFIDENTIAL

LEGAL TERMS: Customer hereby acknowledges and agrees to the terms and conditions on the reverse side hereof which include, but are not limited to, PAYMENT, RELEASE, INDEMNITY, and LIMITED WARRANTY provisions.

CUSTOMER OR CUSTOMER'S AGENT SIGNATURE
 X *[Signature]*
 DATE SIGNED: 9-23-93
 TIME SIGNED: 20:00
 A.M. P.M.

SUB SURFACE SAFETY VALVE WAS:
 PULLED & RETURN PULLED RUN

| | | |
|-------------------------|-----------------|------------|
| TYPE LOCK | DEPTH | |
| BEAN SIZE | SPACERS | |
| TYPE OF EQUALIZING SUB. | CASING PRESSURE | |
| TUBING SIZE | TUBING PRESSURE | WELL DEPTH |
| TREE CONNECTION | TYPE VALVE | |

| | | | |
|--|--|------------|-----------|
| SURVEY | AGREE | UN-DECIDED | DIS-AGREE |
| OUR EQUIPMENT PERFORMED WITHOUT BREAKDOWN? | | | |
| WE UNDERSTOOD AND MET YOUR NEEDS? | | | |
| OUR SERVICE WAS PERFORMED WITHOUT DELAY? | | | |
| WE OPERATED THE EQUIPMENT AND PERFORMED JOB CALCULATIONS SATISFACTORILY? | | | |
| ARE YOU SATISFIED WITH OUR SERVICE? | <input type="checkbox"/> YES <input type="checkbox"/> NO | | |
| <input type="checkbox"/> CUSTOMER DID NOT WISH TO RESPOND | | | |

| | | |
|---|-------|-------|
| PAGE TOTAL | 16 | 20.00 |
| FROM CONTINUATION PAGE(S) | 5,453 | 96 |
| SUB-TOTAL APPLICABLE TAXES WILL BE ADDED ON INVOICE | 7,065 | 98 |

CUSTOMER ACCEPTANCE OF MATERIALS AND SERVICES The customer hereby acknowledges receipt of the materials and services listed on this ticket

| | | | | |
|--|--|--|----------------|----------------------|
| CUSTOMER OR CUSTOMER'S AGENT (PLEASE PRINT) GEORGE HUTTON | CUSTOMER OR CUSTOMER'S AGENT (SIGNATURE) X <i>[Signature]</i> | HALLIBURTON OPERATOR/ENGINEER VART HUTTON | EMP # B2663 | HALLIBURTON APPROVAL |
|--|--|--|----------------|----------------------|



HALLIBURTON
ENERGY SERVICES

TICKET CONTINUATION

ORIGINAL

TICKET No. **509576**

FORM 1911 R-8

| PRICE REFERENCE | | SECONDARY REFERENCE/ PART NUMBER | | ACCOUNTING | | | TIME | DESCRIPTION | WELL | | DATE | UNIT PRICE | AMOUNT |
|-----------------|-------------------------------------|-------------------------------------|------|------------|------|------|-------------------------------|-------------|------|------|------|------------|--------|
| PRICE REFERENCE | SECONDARY REFERENCE/ PART NUMBER | LOC | ACCT | DF | WELL | QTY. | | | U/M | QTY. | | | |
| 504-316 | | 1 | | | | | HALLIBURTON LIGHT CEMENT | 265 | sk | | | | |
| 509-406 | 890.50812 | 1 | | | | | CALCIUM CHLORIDE BLENDED 3% | 7 | sk | | | | |
| 507-210 | 890.50071 | 1 | | | | | FLOCELE BLENDED 1/2% | 132 | 1b | | | | |
| 504-308 | 516.00261 | 1 | | | | | STANDARD CEMENT BLENDED 40/60 | 132 | sk | | | | |
| 506-105 | 516.00286 | 1 | | | | | POZMIX "A" BLENDED 40% | 5884 | 1b | | | | |
| 509-406 | 890.50812 | 1 | | | | | CALCIUM CHLORIDE BLENDED 3% | 6 | sk | | | | |
| 507-210 | 890.50071 | 1 | | | | | FLOCELE BLENDED 1/2# | 110 | 1b | | | | |
| 500-207 | | | | | | | SERVICE CHARGE | | | | | | |
| 500-306 | | | | | | | MILEAGE CHARGE | | | | | | |
| | | | | | | | TOTAL WEIGHT | | | | | | |
| | | | | | | | LOADED MILES | | | | | | |
| | | | | | | | TON MILES | | | | | | |
| | | | | | | | CUBIC FEET | | | | | | |

ORIGINAL

RELEASED

MAY 4 1996

FROM CONFIDENTIAL

CONTINUATION TOTAL

5445.4

RECEIVED
 OPERATIONS DIVISION
 1996 JAN 2
 100

PAGE 2 OF 2

WELL DATA

FIELD _____ SEC 19 TWP 32S RNG. 19W COUNTY COMANCHE STATE KANSAS

FORMATION NAME _____ TYPE _____
 FORMATION THICKNESS _____ FROM _____ TO _____
 INITIAL PROD: OIL _____ BPD. WATER _____ BPD. GAS _____ MCFD _____
 PRESENT PROD: OIL _____ BPD. WATER _____ BPD. GAS _____ MCFD _____
 COMPLETION DATE _____ MUD TYPE _____ MUD WT. _____
 PACKER TYPE _____ SET/AT _____
 BOTTOM HOLE TEMP. _____ PRESSURE _____
 MISC. DATA _____ TOTAL DEPTH _____

| | NEW USED | WEIGHT | SIZE | FROM | TO | MAXIMUM PSI ALLOWABLE |
|--------------|----------|--------|--------|------|-----|-----------------------|
| CASING | | 25 | 8 5/8 | KB | 720 | |
| LINER | CD | | 13 3/4 | KB | 111 | |
| TUBING | | | | | | |
| OPEN HOLE | | | 12 1/4 | 111 | 723 | SHOTS/FT. |
| PERFORATIONS | | | | | | |
| PERFORATIONS | | | | | | |
| PERFORATIONS | | | | | | |

JOB DATA

| CALLED OUT | ON LOCATION | JOB STARTED | JOB COMPLETED |
|------------------|------------------|------------------|------------------|
| DATE <u>9-23</u> | DATE <u>9-23</u> | DATE <u>9-23</u> | DATE <u>9-23</u> |
| TIME <u>1530</u> | TIME <u>1830</u> | TIME <u>2206</u> | TIME <u>2315</u> |

TOOLS AND ACCESSORIES

| TYPE AND SIZE | QTY. | MAKE |
|------------------------|--------------|-----------------------|
| FLOAT <u>INS</u> | | |
| FLOAT SHOE | | |
| GUIDE SHOE | | |
| CENTRALIZERS <u>54</u> | <u>8 5/8</u> | <u>4</u> <u>Howco</u> |
| BOTTOM PLUG | | |
| TOP PLUG <u>5W</u> | <u>8 5/8</u> | <u>1</u> |
| HEAD <u>MANIFOLD</u> | <u>8 5/8</u> | |
| PACKER | | |
| OTHER <u>BASKET</u> | <u>8 5/8</u> | <u>2</u> |

PERSONNEL AND SERVICE UNITS

| NAME | UNIT NO. & TYPE | LOCATION |
|---------------------|---|------------------|
| <u>D. BIGLER</u> | <u>C1690</u> <u>40033</u> <u>P-U</u> | <u>PRATT, KS</u> |
| <u>B. Moxley</u> | <u>B2663</u> <u>52504</u> <u>ROM</u> | |
| <u>K. BEFERT</u> | <u>81513</u> <u>3911-7458</u> <u>BULK</u> | |
| <u>A. GINABETTI</u> | <u>C9239</u> <u>4413</u> <u>BULK</u> | |

MATERIALS
 TREAT. FLUID _____ DENSITY _____ LB./GAL. °API _____
 DISPL. FLUID _____ DENSITY _____ LB./GAL. °API _____
 PROP. TYPE _____ SIZE _____ LB. _____
 PROP. TYPE _____ SIZE _____ LB. _____
 ACID TYPE _____ GAL. _____ %
 ACID TYPE _____ GAL. _____ %
 ACID TYPE _____ GAL. _____ %
 SURFACTANT TYPE _____ GAL. _____ IN _____
 NE AGENT TYPE _____ GAL. _____ IN _____
 FLUID LOSS ADD. TYPE _____ GAL. _____ IN _____
 GELLING AGENT TYPE _____ GAL.-LB. _____ IN _____
 FRIC. RED. AGENT TYPE _____ GAL.-LB. _____ IN _____
 BREAKER TYPE _____ GAL.-LB. _____ IN _____
 BLOCKING AGENT TYPE _____ GAL.-LB. _____
 PERFPAC BALLS TYPE _____ QTY. _____
 OTHER _____
 OTHER _____

RELEASED
 MAR 14 1996
 FROM CONFIDENTIAL

ORIGINAL

DEPARTMENT CEMENT
 DESCRIPTION OF JOB SET 8 5/8 INTERMEDIATE - SEE JOB LOG
 JOB DONE THRU: TUBING CASING ANNULUS TBG./ANN.
 CUSTOMER REPRESENTATIVE X [Signature]
 HALLIBURTON OPERATOR [Signature] COPIES REQUESTED _____

CEMENT DATA

| STAGE | NUMBER OF SACKS | CEMENT | BRAND | BULK SACKED | ADDITIVES | YIELD CU.FT./SK. | MIXED LBS./GAL. |
|----------|-----------------|--------------|-------|-------------|---------------------------------|------------------|-----------------|
| <u>1</u> | <u>265</u> | <u>LIGHT</u> | | <u>B</u> | <u>3%CC 1/2lb FLOCZE</u> | <u>1.54</u> | <u>13.6</u> |
| | <u>220</u> | <u>40/60</u> | | <u>B</u> | <u>NO GEL 3%CC 1/2lb FLOCZE</u> | <u>1.04</u> | <u>15.2</u> |

PRESSURES IN PSI

SUMMARY

VOLUMES

CIRCULATING _____ DISPLACEMENT _____ PRESLUSH 3 GAL. TYPE FRESH WATER
 BREAKDOWN _____ MAXIMUM _____ LOAD & BKDN: BBL.-GAL. _____ PAD: BBL.-GAL. _____
 AVERAGE _____ FRACTURE GRADIENT _____ TREATMENT: BBL.-GAL. _____ DISPE: BBL.-GAL. 44.9
 SHUT-IN: INSTANT _____ 5-MIN _____ 15-MIN _____ CEMENT SLURRY LT 72.6 GAL. 140.7 TOTAL 113.3
 HYDRAULIC HORSEPOWER _____ TOTAL VOLUME: BBL.-GAL. _____
 ORDERED _____ AVAILABLE _____ USED _____
 AVERAGE RATES IN BPM _____
 TREATING _____ DISPL. _____ OVERALL _____
 CEMENT LEFT IN PIPE _____
 FEET 15 REASON REQUEST

RAMARKS

SPOT TOP PLUG WITH WIRELINE
 RECEIVED
 OPERATIONS COMMISSION
 1-705
 JAN 24 1994
 CONSERVATION DIVISION
 Wichita, Kansas

CUSTOMER: Halliburton Petroleum
 LEASE: K-1100005
 WELL NO: 2
 JOB TYPE: 8 5/8 INTERMEDIATE
 DATE: 9-23-95

DATE: 9-23-71
TICKET NO. 509516

CUSTOMER: *HALLWOOD PET* WELL NO.: *R* LEASE: *REYNOLDS* JOB TYPE: *8 1/8 INT.*

| CHART NO. | TIME | RATE (BPM) | VOLUME (BBL) (GAL) | PUMPS | | PRESSURE (PSI) | | DESCRIPTION OF OPERATION AND MATERIALS |
|-----------|------|------------|--------------------|-------|---|----------------|--------|--|
| | | | | T | C | TUBING | CASING | |

| | | | | | | | | |
|--|------|-----|-------|---|---|--|-----|--|
| | 1430 | | | | | | | Called to @ |
| | 1530 | | | | | | | Called out - Ready now |
| | 1830 | | | | | | | on loc - set up |
| | 1845 | | | | | | | Rig crew circulating hole - (hole is made) |
| | 1900 | | | | | | | Start out w/ drill pipe |
| | | | | | | | | Drill pipe out of hole |
| | | | | | | | | Rig up to run 8 1/8" casing |
| | 2000 | | | | | | | Start to hole w/ 8 1/8" casing |
| | 2146 | | | | | | | Casing on bottom |
| | | | | | | | | Hook to rig and pump |
| | | | | | | | | Break circulation |
| | 2200 | | | | | | | Finish circulation |
| | | | | | | | | Hook to Hawco! |
| | | | | | | | | Cement as follows: |
| | 2206 | 5.0 | 3.6 | - | - | | 250 | Pump Fresh H2O spacer |
| | 2208 | 4.0 | 0 | - | - | | 250 | Start mixing cement (HLC) |
| | 2235 | 4.0 | 113.3 | - | - | | 200 | Finish mixing cement (Puz) |
| | | | | | | | | Release Plug |
| | 2237 | 4.9 | 0 | - | - | | 200 | Start Displacement |
| | 2246 | 4.9 | 44.9 | - | - | | 500 | Plug Down |
| | | | | | | | | JOB COMPLETE |

RELEASED

MAR 14 1996

FROM CONFIDENTIAL

ORIGINAL

Thank you

Doug
Bill
K. 11/11
JRS

RECEIVED
STATE CORPORATION COMMISSION

JAN 24 1994

CONSERVATION DIVISION
Kansas

Phone 913-483-2627, Russell, Kansas
 Phone 316-793-5861, Great Bend, Kansas

Corrected Ticket

Phone Plainville 913-434-2812
 Phone Ness City 913-798-3843

ALLIED CEMENTING CO., INC.

3587

Home Office P. O. Box 31

Russell, Kansas 67665

New Well

| | | | | | | | | | | | | | | | | |
|---------------------|---|----------|-------------|----------|-----|-------|-----|--------------------------|---------|-------------|--------|---|-------------------------|--------|--------|--|
| Date | 10-7-93 | Sec. | 19 | Twp. | 32S | Range | 19W | Called Out | 11:30 A | On Location | 2:30 P | Job Start | 4:30 P | Finish | 5:30 P | |
| Lease | Reynolds | Well No. | 2 | Location | | | | Coldwater Tw-2S-1/2E-N/5 | County | COMANCHE | State | KANSAS | | | | |
| Contractor | Hallwood <i>Allen #5</i> | | | | | | | | | | | Owner | Hallwood Petroleum Inc. | | | |
| Type Job | Rotary Plug <i>Rotary Plug</i> | | | | | | | | | | | To Allied Cementing Co., Inc. You are hereby requested to rent cementing equipment and furnish cementer and helper to assist owner or contractor to do work as listed. | | | | |
| Hole Size | 7 7/8 | | T.D. 5960 | | | | | | | | | | | | | |
| Csg. | 8 5/8 24" | | Depth 723 | | | | | | | | | | | | | |
| Tbg. Size | Depth | | | | | | | | | | | | | | | |
| Drill Pipe | 4 1/2 | | Depth 1000' | | | | | | | | | | | | | |
| Tool | Depth | | | | | | | | | | | | | | | |
| Cement Left in Csg. | Shoe Joint | | | | | | | | | | | | | | | |
| Press Max. | Minimum | | | | | | | | | | | | | | | |
| Meas Line | Displace <i>8 1/2 BHS MOD</i> | | | | | | | | | | | | | | | |
| Perf. | | | | | | | | | | | | | | | | |

ORIGINAL

EQUIPMENT

| | | | | |
|-----------------|-----|----------|-----|----------------|
| Pumptrk 265 | No. | Cementer | 272 | <i>DEAL R.</i> |
| | | Helper | | <i>CARL B.</i> |
| Pumptrk | No. | Cementer | | |
| | | Helper | | |
| Bulktrk 256/250 | | Driver | | <i>MARK B.</i> |
| | | Driver | | |

DEPTH of Job *1000 FT*

| | | |
|------------|---------------------|-------------------|
| Reference: | Pump Charge | 430.00 |
| 1 | 8 5/8 Dry Hole Plug | 21.00 |
| 55 | MELAGZ | 123.75 |
| | Sub Total | 484.75 |
| | Tax | |
| | Total | 574.75 |

Remarks:
 1st Plug 1000' w/ 50 SK
 2nd Plug 750' w/ 50 SK
 3rd Plug 40' w/ WOODEN Plug & 10 SK
 RAT HOLE w/ 15 SK

Charge To *Hallwood Petroleum Inc.*
 Street *4382 S. VISIT ST. PARKWAY SUITE #1700*
 City *DENVER* State *COLORADO 80237*
 The above was done to satisfaction and supervision of owner agent or contractor.

Purchase Order No.
George Sutton

CEMENT

| | | | |
|----------------|--------------------------|-------------------------|----------------------|
| Amount Ordered | <i>125 60/40 60% GEL</i> | | |
| Consisting of | RELEASED | | |
| Common | <i>75</i> | <i>5.75</i> | <i>431.25</i> |
| Poz. Mix | <i>50</i> | <i>3.00</i> | <i>150.00</i> |
| Gel. | <i>75K</i> | <i>MAR 14 1996 7.00</i> | <i>49.00</i> |
| Chloride | | | 5.00 |
| Quickset | FROM CONFIDENTIAL | | |
| Handling | <i>125</i> | | <i>125.00</i> |
| Mileage | <i>125 X 55 X .04</i> | | <i>275.00</i> |
| | | | Total 1030.25 |

Floating Equipment

RECEIVED \$563.00
 STATE CORPORATION COMMISSION
 Total \$ *1605.00*
 Disc - *321.00* JAN 24 1991
 \$ *1284.00*



CEMENTING LOG

STAGE NO. _____

Date 10-7-93 District Med. Lodge Ks. Ticket No. 3587
 Company Hallwood Pet. Inc. Rig ALLEN #5
 Lease Keynolds Well No. 2
 County COMANCHE State KANS
 Location Coldwater 7w-2s-11e-15 Field 19-32s-19w

CEMENT DATA: **ORIGINAL**
 Spacer Type: _____
 Amt. _____ Sks Yield _____ ft³/sk Density _____ PPG

LEAD: Pump Time _____ hrs. Type 60:40:6% GEL
 Excess _____
 Amt. 125 Sks Yield 1.56 ft³/sk Density 13.4 PPG
 TAIL: Pump Time _____ hrs. Type _____
 Excess _____
 Amt. _____ Sks Yield _____ ft³/sk Density _____ PPG
 WATER: Lead 7.8 gals/sk Tail _____ gals/sk Total 23.25 Bbls.

CASING DATA: PTA Squeeze
 Surface Intermediate Production Liner
 Size _____ Type _____ Weight _____ Collar _____

Casing Depths: Top _____ Bottom 723 ft 8 5/8"

Drill Pipe: Size 4 1/2 Weight _____ Collars _____
 Open Hole: Size 7 7/8 T.D. 5960 ft. P.B. to 1000 ft.

CAPACITY FACTORS:
 Casing: Bbls/Lin. ft. 0.637 Lin. ft./Bbl. 15.7
 Open Holes: Bbls/Lin. ft. 0.602 Lin. ft./Bbl. 16.5993
 Drill Pipe: Bbls/Lin. ft. 0.142 Lin. ft./Bbl. 70.32
 Annulus: 4 1/2 x 7 7/8 Bbls/Lin. ft. 0.406 Lin. ft./Bbl. 24.6474
4 1/2 x 8 5/8 Bbls/Lin. ft. 0.440 Lin. ft./Bbl. 22.72
 Perforations: From _____ ft. to _____ ft. Amt. _____

Pump Trucks Used #265 CARL B.
 Bulk Equip. #256/250 MARK B.

RELEASED

Float Equip: Manufacturer _____ Date MAR 14 1996
 Shoe: Type _____ Depth _____
 Float: Type _____
 Centralizers: Quantity _____ Plugs Top _____ Btm. _____
 Stage Collars _____
 Special Equip. _____
 Disp. Fluid Type MUD Amt. 13.5 TOTAL Bbls. Weight _____ PPG
 Mud Type _____ Weight _____ PPG

FROM CONFIDENTIAL

COMPANY REPRESENTATIVE _____

CEMENTER NEAL Kupp

| TIME | PRESSURES PSI | | FLUID PUMPED DATA | | | REMARKS | |
|--------|---------------|-------------------|-------------------|-------------|------------------------|---------------------------------|---|
| | AM/PM | DRILL PIPE CASING | ANNULUS | TOTAL FLUID | Pumped Per Time Period | | RATE Bbls Min. |
| | | | | | | ARRIVED ON LOC. 2:30 P / RIG UP | |
| 4:30 | | 50 | | | 6 | 3.5 | RUN DRILL PIPE TO 1000' LOAD HOLE / RIG PUMP START FRESH H ₂ O PAD |
| | | 100 | | | 14 | 3.5 | H ₂ O IN START CEMENT |
| | | 150 | | | 2 | 3.5 | CEMENT IN / START FRESH H ₂ O PAD |
| 4:40 | | 0 | 30.5 | | 8.5 | | PAD IN START MUD DISP. MUD IN - Plug Down - Cement Top PIPE OUT AT 768' IN 7 7/8 HOLE |
| | | | | | | | Pull Drill Pipe to Next Plug 750 FT |
| 4:50 | | 100 | | | 6 | 3 | LOAD HOLE WITH RIG PUMP START H ₂ O PAD |
| | | 100 | | | 14 | 3 | PAD IN START CEMENT |
| | | 100 | | | 2 | 3 | CEMENT IN / START H ₂ O PAD |
| 5:00 | | 0 | 27 | | 5 | | PAD IN START MUD DISP MUD IN / Plug Down - Cement Top AT 572 FT IN 8 5/8 CASING |
| | | | | | 3.0 | 1 | POLL DRILL PIPE OUT OF HOLE Push BRIDGE PLUG 1/2 SX CSH TO 40 FT - MIX & Pump 15 SX |
| 5:30 P | | | 2.0 | | 4.0 | 1 | PUT DRILL PIPE (1ST) IN RATHOLE MIX & Pump 15 SX Job COMPLETE |