

STATE CORPORATION COMMISSION OF KANSAS
OIL & GAS CONSERVATION DIVISION
WELL COMPLETION FORK
ACO-1 WELL HISTORY
DESCRIPTION OF WELL AND LEASE

Operator: License # 31021
Name: Castelli Exploration, Inc.
Address 9500 Westgate Drive, Suite 101

City/State/zip Oklahoma City, OK 73162
Purchaser: Oneok Field Services
Operator Contact Person: Thomas P. Castelli
Phone (405) 722-5511
Contractor: Name: Val Energy
License: 5822
Wellsite Geologist: _____

Designate Type of Completion:
 New Well Re-Entry Workover

Oil SWD SLOW Temp Abd.
 Gas ENHR SIGW
 Dry Other (Core, WSW, Expl., Cathodic, etc.)

If Workover:
Operator: J.M. Huber
Well Name: #1 Einsel
Comp. Date 2-10-56 Old Total Depth 5970'

Deepening Re-perf. Conv. to Inj/SWD
 Plug Back PBT
 Commingled Docket No. _____
 Dual Completion Docket No. _____
 Other (SWD or Inj?) Docket No. _____

10-9-00 5230' 12-27-00
 Date of REENTRY Date Reached TD Completion Date

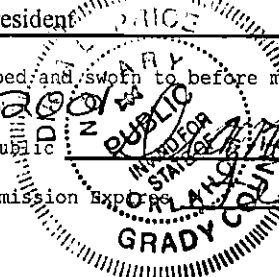
API NO. 15- 033010090001
County Comanche
-SW-NW-NW Sec. 11 Twp. 33S Rge. 17 ^E _W
660' Feet from S (circle one) Line of Section
330' Feet from E (circle one) Line of Section
Footages Calculated from Nearest Outside Section Corner:
NE, SE, NW or SW (circle one)
Lease Name Einsel "OWWO" Well # 1-11
Field Name Shimer
Producing Formation Fort Scott
Elevation: Ground 1948 KB 1960
Total Depth 5230' PBDT 5166'
Amount of Surface Pipe Set and Cemented at 300' Feet
Multiple Stage Cementing Collar Used? Yes No
If yes, show depth set _____ Feet
Alternate 11 completion, cement circulated from _____
Set depth to _____ w/ _____ sx cmt.
Operating Fluid Management Plan REENTRY 97 02/15/02
(Fluid must be collected from the Reserve Pit)
Casing content 6000 ppm Fluid volume 160 bbls
De-watering method used Hauled
Location of fluid disposal if hauled offsite:
Operator Name Oil Producers
Lease Name Watson License No. 8061
NW Quarter Sec. 2 Twp. 29S Rng. 15 ^E _W
County Pratt Docket No. D24324

STATE CORPORATION COMMISSION
RECEIVED
OPERATION DIVISION
FEB - 9 2001

INSTRUCTIONS: An original and two copies of this form shall be filed with the Kansas Corporation Commission, 130 S. Market - Room 2078 Wichita Kansas 67202 within 120 days of the spud date, recompletion, workover or conversion of a well. Rule 82-3-130, 82-3-106 and 82-3-167 apply. Information on side two of this form will be held confidential for a period of 12 months if requested in writing and submitted with the form (see rule 82-3-107 for confidentiality in excess of 12 months). One copy of all wireline Logs and geologist well report shall be attached with this form. ALL CEMENTING TICKETS MUST BE ATTACHED. Submit CP-4 form with all plugged wells. Submit CP-111 form with all temporarily abandoned wells.

ALL requirements of the statutes, rules and regulations promulgated to regulate the oil and gas industry have been fully complied with and the statements herein are complete and correct to the best of my knowledge.

Signature Thomas P. Castelli
Title President Date 01/29/01
Subscribed and sworn to before me this 29th day of January
19 2001
Notary Public Thomas P. Price
Date Commission Expires January 10, 2005



K.C.C. OFFICE USE ONLY
F Letter of Confidentiality Attached
C Wireline Log Received (NONE)
C Geologist Report Received
Distribution
 KCC SWD/Rep NGPA
 KGS Plug Other (Specify)

X

Operator Name Castelli Exploration, Inc. Lease Name Einsel Well # 1-11
 Sec. 11 Twp. 33S Rge. 17 East County Comanche
 West

INSTRUCTIONS: Show important tops and base of formations penetrated. Detail all cores. Report all drill stem tests giving interval tested, time toot open and closed, flowing and shut-in pressures, whether shut-in pressure reached static level, hydrostatic pressures, bottom hole temperature, fluid recovery, and flow rates if gas to surface during test. Attach extra sheet if more space is needed. Attach copy of log.

Drill Stem Tests Taken Yes No
 (Attach Additional Sheets.)
 Samples Sent to Geological Survey Yes No
 Cores Taken Yes No
 Electric Log Run Yes No
 (Submit Copy.)
 List All E.Logs Run: None

Log Formation (Top), Depth and Datums Sample

Name:	Top	Datum
Heebner Shale	4210	-2250
Lansing	4405	-2445
Swope	4812	-2852
Ft Scott	5029	-3069
Miss	5096	-3136
TD	5230	

CASING RECORD New Used
 Report all strings set-conductor, surface, intermediate, production, etc.

Purpose of String	Size Hole Drilled	Size Casing Set (In O.D.)	Weight Lbs./Ft.	Setting Depth	Type of Cement	# Sacks Used	Type and Percent Additives
Production String	7 7/8	4 1/2	10.5	5217	A-Con	125	Gilsonite, Floccate, 1% Defoam

ADDITIONAL CEMENTING/SQUEEZE RECORD

Purpose:	Depth Top Bottom	Type of Cement	#Sacks Used	Type and Percent Additives
<input type="checkbox"/> Perforate				
<input type="checkbox"/> Protect Casing				
<input type="checkbox"/> Plug Back TD				
<input type="checkbox"/> Plug Off Zone				

Shots Per Foot	PERFORATION RECORD - Bridge Plugs Set/Type Specify Footage of Each Interval Perforated	Acid, Fracture, Shot, Cement Squeeze Record (Amount and Kind of Material Used) Depth
4 spf	5030-5036	500 G 15% Fe, 3000 G 15% Fe + 5,000 gallons 70% N ₂ Foam + FEB - 9 2001 2,000 gallons Foam + 3000 lbs 20/40 SAND

TUBING RECORD Size 2 3/8 Set At 5036 Packer At None Yes No
 Date of First, Resumed Production, SWD or Inj. 01/02/01 Producing Method Flowing Pumping Gas Lift Other (Explain)
 Estimated Production Per 24 Hours oil 0 Bbls. Gas 85 Mcf Water 0 Bbls. Gas-Oil Ratio _____ Gravity _____

Disposition of Gas: METHOD OF COMPLETION Production Interval 5030' - 5036'
 Vented Sold Used on Lease Open Role Perf. Dually Comp. Commingled
 (If vented, submit ACO-18.) Other (Specify) _____



INVOICE NO.

FIELD ORDER

02832

Subject to Correction

Date 10-12-00	Lease Einsel	Well # 1-11	Legal 11-33-17
Customer ID	County Comanche	State KS	Station Pratt KS

CHARGE

Castelli Explor Inc

Depth	Formation	Spec Joint 42-00
Casing 4 1/2 10.5pt 5217	Casing Depth	TD 5230
Customer Representative Tom Larson	Treater D Scott	Job Type long string owwo oldwell

AFE Number PO Number

Materials Received by **X T.C. Larson**

Product Code	QUANTITY	MATERIAL, EQUIPMENT and SERVICES USED	UNIT PRICE	AMOUNT	ACCOUNTING	
					CORRECTION	AMOUNT
D200	125 sks	A-Con Cmt Blend				
D202	25 sks	60/40 po2				
C195	30 lbs	Cell Flare				
C310	252 lbs	Calcium Chloride				
C243	11 lbs	Defoamer				
C313	94 lbs	Gas Block Powder				
C322	621 lbs	Gilsonite				
C196	93 lbs	FLA-322				
C302	500 gal	mud flush				
E107	130 sks	Cmt Serv Charge				
R702	1 ea	Csg Swivel				
R701	1 ea	Cmt Head Rental				
F130	1 ea	4 1/2 Top Swiper Plug				
E100	1 ea	UNITS 1609 MILES 60				
E104	477 tm	TONS MILES 60				
R211	1 ea	EA 500'-550' PUMP CHARGE				
Discounted Amount = 5245.05						
+ Taxes						

As consideration, the Customer agrees:

- a) To pay ACID SERVICES, LLC in accord with the rates and terms stated in ACID SERVICES, LLC's current price list. Invoices are payable NET 30 after date of invoice. Upon Customers' default payment of Customer's account by the last day of the month following the month in which the invoice is dated, Customer agrees to pay interest thereon after default at the highest lawful-contract rate applicable but never to exceed 18% per annum. In the event it becomes necessary to employ attorneys to enforce collection of said account, Customer agrees to pay all collection cost and attorney fees in the amount of the unpaid account.
- b) To defend, indemnify, release and hold harmless ACID SERVICES, LLC, its divisions, subsidiaries, parent and affiliated companies and the officers, directors, employees, agents and servants of all of them from and against any claims, liability, expenses, attorney's fees, and costs of defense to the extent permitted by law for:
1. Damage to property owned by, in the possession of, or leased by Customer, and/or the well owner (if different from Customer), including, but not limited to, surface and subsurface damage. The term "well owner" shall include working and royalty interest owners.
 2. Reservoir, formation, or well loss or damage, subsurface trespass or any action in the nature thereof.
 3. Personal injury of death or property damage (including, but not limited to, damage to the reservoir, formation or well), or any damages whatsoever, growing out of or in any way connected with or resulting from pollution, subsurface pressure, losing control of the well and/or a well blowout or the use of radioactive material. The amount of this invoice is due and payable at ACID SERVICES, LLC, Dept. No. 1131, Tulsa, Oklahoma 74182. All terms of the Service Order with customer are incorporated herein and made a part hereof by reference.
- The defense, indemnity, release and hold harmless obligations of Customer provided for in this Section b) and Section c) below shall apply to claims or liability even if caused or contributed to by ACID SERVICES, LLC's negligence, strict liability, or operated, or furnished by ACID SERVICES, LLC or any defect in the data, products, supplies, materials, or equipment of ACID SERVICES, LLC whether the preparation, design, manufacture, distribution, or marketing thereof, or from a failure to warn any person of such defect. Such defense, indemnity, release and hold harmless obligations of Customer shall not apply where the claims or liability are caused by the gross negligence or willful misconduct of ACID SERVICES, LLC. The term "ACID SERVICES, LLC" as used in said Sections b) and c) shall mean ACID SERVICES, LLC, its divisions, subsidiaries, parent and affiliated companies, and the officers, directors, employees, agents and servants of all of them.
- c) That because of the uncertainty of variable well conditions and the necessity of relying on facts and supporting services furnished by others, ACID SERVICES, LLC is unable to guarantee the effectiveness of the products, supplies, or materials, nor the results of any treatment or service, nor the accuracy of any chart interpretation, research analysis, job recommendation or other data furnished by ACID SERVICES, LLC. ACID SERVICES, LLC personnel will use their best efforts in gathering such information and their best judgment in interpreting it, but Customer agrees that ACID SERVICES, LLC shall not be liable for and Customer shall indemnify ACID SERVICES, LLC against any damages from the use of such information.
- d) That ACID SERVICES, LLC warrants only title to the products, supplies, and materials and that the same are free from defects in workmanship and materials. THERE ARE NO WARRANTIES, EXPRESS OR IMPLIED OF MERCHANTABILITY, FITNESS OR OTHERWISE WHICH EXTEND BEYOND THOSE STATED IN THE IMMEDIATELY PRECEDING SENTENCE. Acid Services LLC's liability and Customer's exclusive remedy in and cause of action (whether in contract, tort, breach of warranty or otherwise) arising out of the sale or use of any products, supplies or materials is expressly limited to the replacement of such products, supplies or materials on their return to ACID SERVICES, LLC or, at ACID SERVICES, LLC's option, to the allowance to the Customer of credit for the cost of such items. In no event shall ACID SERVICES, LLC be liable for special, incidental, indirect, punitive or consequential damages.
- e) To waive the provisions of the Deceptive Trade Practices - Consumer Protection Act, to the extent permitted by law. We certify that the Fair Labor Standards Act of 1938, as amended, has been complied with in the production of goods and/or with respect to service furnished under this contract.
- f) That this contract shall be governed by the law of the state where services are performed or materials are furnished.
- g) That ACID SERVICES, LLC shall not be bound by any changes or modifications in this contract, except where such change or modification is made in writing by a duly authorized manager of ACID SERVICES, LLC.



TREATMENT REPORT 02568

Customer ID	Date
Customer Castelli Explor Inc	10-12-00
Lease Einsel	Lease No.
	Well # 1-11

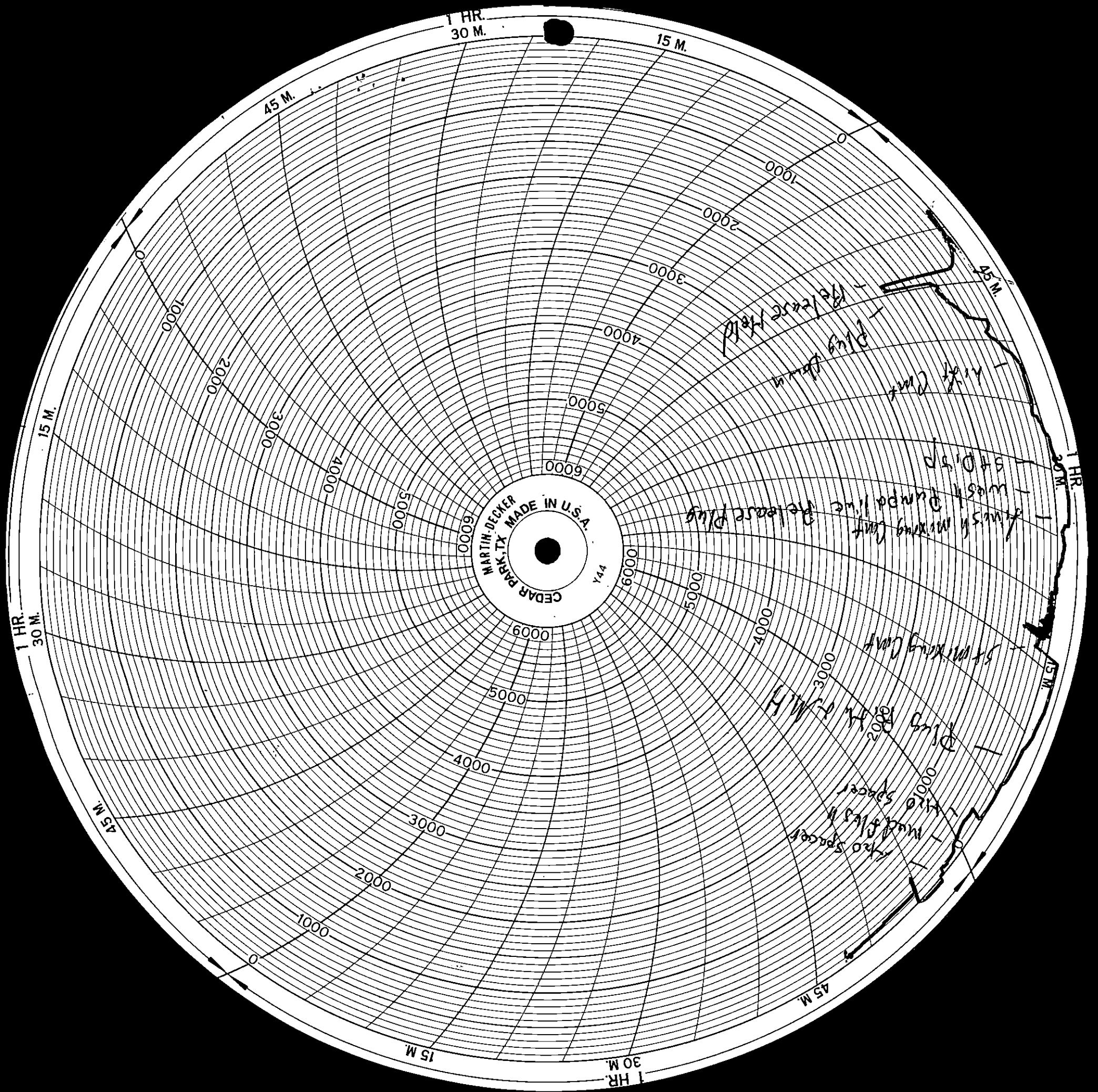
Field Order # 02832	Station Pratt KS	Casing 4 1/2 10.5pt	Depth 3217	County Comanche	State KS
Type Job Long String Oowoo Oldwell			Formation	Legal Description 11-33-17	

PIPE DATA		PERFORATING DATA		FLUID USED		TREATMENT RESUME		
Casing Size 4 1/2	Tubing Size	Shots/Ft		Acid 125sk's A-Con w/ Add	RATE	PRESS	ISIP	
Depth 3217-42 = 515	Depth 515	From	To	Pre-grad 13.5ppg 1.82 ft	Max	2500	5 Min.	
Volume 82.2	Volume	From	To	Prod 40.5 Bbl's SL	Min		10 Min.	
Max Press	Max Press	From	To	Frac	Avg		15 Min.	
Well Connection	Annulus Vol.	From	To		HHP Used		Annulus Pressure	
Plug Depth	Packer Depth	From	To	Flush 500 gal m.f.	Gas Volume		Total Load	

Customer Representative Tom Larson	Station Manager Dave Aury	Treater D Scott
---------------------------------------	------------------------------	--------------------

Service Units	106	35	57	32	70
---------------	-----	----	----	----	----

Time	Casing Pressure	Tubing Pressure	Bbls. Pumped	Rate	Service Log
2100					Called Out
2400					Dahoc w/ Trk's Safety wmg Co man Ranown F.E. Csg on Bottom Circ 2 hrs
0857	400		5	6	H2O Spacer
0858	400		12	6	St mud flush
0903	400		5	6	H2O Spacer
0916	400			6	St mixing Cmt @ 13.5ppg 125sk's
0926	0		40.5	0	Finish mixing Cmt
0928			10	5	wash Pump & line
0930	100			7	Release Plug & St Disp w/ H2O
0938	400		60	7	Lifting Cmt
0945	1500		82.2	0	Plug Down & psi Test Csg
0947	0				Release psi float Held
					Plug R.H. & M.H. w/ 125sk's 60/40 por
					Good Circ Durging Job
					Job Complete
					Thank you
					Scotty



- PRATT

Field Receipt 02832
Company Castelli Explor Inc
Lease-Well Einzel 1-11
Formation 4 1/2 long string
Date 10-12-00
Treater D Scott



TREATMENT REPORT 02649

Customer ID		Date	
Customer <i>Castelli Expl.</i>		<i>11-28-00</i>	
Lease <i>Einsel</i>		Lease No.	Well # <i>1-11-0WWD</i>
Field Order # <i>02993</i>	Station <i>Pratt</i>	Casing <i>4 1/2</i>	Depth <i>5002</i>
Type Job <i>Acid Old Well</i>	Formation <i>FT. Scott</i>	County <i>Comanche</i>	State <i>Ks.</i>
		Legal Description <i>Sec. 11-33-17W</i>	

PIPE DATA		PERFORATING DATA		FLUID USED		TREATMENT RESUME		
Casing Size <i>4 1/2</i>	Tubing Size <i>2 3/8</i>	Shots/Ft <i>4</i>		Acid <i>500gals. 15% DSFE</i>		RATE	PRESS	ISIP <i>650</i>
Depth <i>5002</i>	From <i>5030</i>	To <i>5036</i>		Pre Pad <i>F-1</i>	Max <i>1/2</i>	<i>700</i>	5 Min. <i>450</i>	
Volume <i>19</i>	From	To		Pad	Min <i>1/3</i>	<i>300</i>	10 Min. <i>400</i>	
Max Press	From	To		Frac	Avg		15 Min. <i>350</i>	
Well Connection	Annulus Vol.	From	To		HHP Used		Annulus Pressure	
Plug Depth	Packer Depth	From	To	Flush <i>19 Bbls. Kcl water</i>	Gas Volume		Total Load <i>30 Bbls.</i>	

Customer Representative <i>Tom Larson</i>	Station Manager <i>DAVE AUTRY</i>	Treater <i>Jim STRUNK</i>
--	--------------------------------------	------------------------------

Time	Casing Pressure	Tubing Pressure	Bbls. Pumped	Rate	Service Log
<i>8:45 AM</i>					<i>Arrive on location</i>
					<i>Hold SAFETY meeting</i>
<i>9:29</i>			<i>10</i>		<i>Tbg. @ 5032' Packer NOT SET</i>
					<i>Pump 10 Bbls. Acid down Tbg.</i>
					<i>LET FALL TO BOTTOM</i>
<i>9:51</i>					<i>Pull Tbg. up & SET Packer 5002'</i>
<i>9:52</i>			<i>12</i>		<i>START Pump Acid down Tbg.</i>
<i>9:56</i>	<i>100</i>		<i>20</i>		<i>500 Acid in, START Kcl WATER</i>
<i>10:03</i>	<i>0</i>				<i>Tbg. Loaded STOP, LET SET</i>
<i>10:06</i>	<i>400</i>				<i>START PUMP</i>
<i>10:14</i>	<i>300</i>		<i>21</i>	<i>1/3</i>	<i>STOP pump - 10:10:0, START Pump</i>
					<i>STOP pump, Close Tbg. in</i>
					<i>Hook to ANN.</i>
<i>10:19</i>					<i>START Pump Kcl WATER down ANN.</i>
<i>10:27</i>			<i>28</i>		<i>ANN. Loaded, STOP, Close ANN.</i>
<i>10:32</i>					<i>Hook to Tbg., START Pump</i>
<i>10:33</i>	<i>500</i>				<i>Hold Said Press. Pump OFF & ON</i>
<i>10:46</i>	<i>500</i>		<i>1</i>	<i>1/3</i>	<i>Feeding STEADY</i>
<i>10:00</i>	<i>500</i>		<i>6</i>		<i>Speed pump RATE</i>
<i>11:07</i>	<i>700</i>		<i>8</i>	<i>1/2</i>	<i>Feeding</i>
<i>11:07</i>	<i>700</i>		<i>11</i>	<i>1/2</i>	<i>19 Bbls. WATER down Tbg., STOP</i>

Job Complete

MARTIN-DECKER
CEDAR PARK, TX. MADE IN U.S.A.
Y44

15 M.

1 HR.
30 M.

45 M.

45 M.

1 HR.
30 M.

15 M.

15 M.

1 HR.
30 M.

45 M.

15 M.

1 HR.
30 M.

5000-36

5000

Close in
to
the
pump
station

Close in
to
the
pump
station

Close in
to
the
pump
station

Close in
to
the
pump
station

Close in
to
the
pump
station

Close in
to
the
pump
station

Close in
to
the
pump
station

9:00 AM

TXA @ 5032
Packer not set

Pump 36
Pump 36
Pump 36

Pump 36
Pump 36
Pump 36

Pump 36
Pump 36
Pump 36

Pump 36
Pump 36
Pump 36

Field Receipt 02993

Company Castelli Expl.

Lease-Well Finse / #1-11-0W40

Formation FT. Scott

Date 11-28-00

Operator Jim STRUNK



INVOICE NO.
Date 11-30-00
Customer ID

FIELD ORDER 02946

Subject to Correction

CHARGE

Castelli Exploration

Lease HERRINGTON	Well # 1-3	Legal 3-335-164
County Comanche	State KS	Station Pratt
Depth	Formation Miss	Shoe Joint
Casing	Casing Depth	TD
Customer Representative Tom Larsen	Treater Maurin Flemming	Job Type Acid New Well

AFE Number	PO Number
------------	-----------

Materials Received by **X** T.C. Janson

Product Code	QUANTITY	MATERIAL, EQUIPMENT and SERVICES USED	UNIT PRICE	AMOUNT	ACCOUNTING	
					CORRECTION	AMOUNT
A302	1000	gal 15% HCL				
A310	1000	gal MCA				
C110	2	gal Ahib-1 EP				
C170	50	Each 7/8" Balls				
E200	1 Ea	Acid Pump 0-3000"				
E701	1 Ea	Ball injector				
E100	75 m	UNITS 1 MILES 75				
		TONS MILES				
		EA. PUMP CHARGE				
		Discount Price		2331.00		
		Plus Tax				

04/20/18

As consideration, the Customer agrees:

a) To pay ACID SERVICES, LLC in accord with the rates and terms stated in ACID SERVICES, LLC's current price list. Invoices are payable NET 30 after date of invoice. Upon Customers' default payment of Customer's account by the last day of the month following the month in which the invoice is dated, Customer agrees to pay interest thereon after default at the highest lawful contract rate applicable but never to exceed 18% per annum. In the event it becomes necessary to employ attorneys to enforce collection of said account, Customer agrees to pay all collection cost and attorney fees in the amount of the unpaid account.

b) To defend, indemnify, release and hold harmless ACID SERVICES, LLC; its divisions, subsidiaries, parent and affiliated companies and the officers, directors, employees, agents and servants of all of them from and against any claims, liability, expenses, attorney's fees, and costs of defense to the extent permitted by law for:

1. Damage to property owned by, in the possession of, or leased by Customer, and/or the well owner (if different from Customer), including, but not limited to, surface and subsurface damage. The term "well owner" shall include working and royalty interest owners.
2. Reservoir, formation, or well loss or damage, subsurface trespass or any action in the nature thereof.
3. Personal injury of death or property damage (including, but not limited to, damage to the reservoir, formation or well), or any damages whatsoever, growing out of or in any way connected with or resulting from pollution, subsurface pressure, losing control of the well and/or a well blowout or the use of radioactive material. The amount of this invoice is due and payable at ACID SERVICES, LLC, Dept. No. 1131, Tulsa, Oklahoma 74182. All terms of the Service Order with customer are incorporated herein and made a part hereof by reference.

The defense, indemnity, release and hold harmless obligations of Customer provided for in this Section b) and Section c) below shall apply to claims or liability even if caused or contributed to by ACID SERVICES, LLC's negligence, strict liability, or operated, or furnished by ACID SERVICES, LLC or any defect in the data, products, supplies, materials, or equipment of ACID SERVICES, LLC whether the preparation, design, manufacture, distribution, or marketing thereof, or from a failure to warn any person of such defect. Such defense, indemnity, release and hold harmless obligations of Customer shall not apply where the claims or liability are caused by the gross negligence or willful misconduct of ACID SERVICES, LLC. The term "ACID SERVICES, LLC" as used in said Sections b) and c) shall mean ACID SERVICES, LLC, its divisions, subsidiaries, parent and affiliated companies, and the officers, directors, employees, agents and servants of all of them.

c) That because of the uncertainty of variable well conditions and the necessity of relying on facts and supporting services furnished by others, ACID SERVICES, LLC is unable to guarantee the effectiveness of the products, supplies, or materials, nor the results of any treatment or service, nor the accuracy of any chart interpretation, research analysis, job recommendation or other data furnished by ACID SERVICES, LLC. ACID SERVICES, LLC personnel will use their best efforts in gathering such information and their best judgment in interpreting it, but Customer agrees that ACID SERVICES, LLC shall not be liable for and Customer shall indemnify ACID SERVICES, LLC against any damages from the use of such information.

d) That ACID SERVICES, LLC warrants only title to the products, supplies, and materials and that the same are free from defects in workmanship and materials. THERE ARE NO WARRANTIES, EXPRESS OR IMPLIED OF MERCHANTABILITY, FITNESS OR OTHERWISE WHICH EXTEND BEYOND THOSE STATED IN THE IMMEDIATELY PRECEDING SENTENCE. Acid Services LLC's liability and Customer's exclusive remedy in and cause of action (whether in contract, tort, breach of warranty or otherwise) arising out of the sale or use of any products, supplies or materials is expressly limited to the replacement of such products, supplies or materials on their return to ACID SERVICES, LLC or, at ACID SERVICES, LLC's option, to the allowance to the Customer of credit for the cost of such items. In no event shall ACID SERVICES, LLC be liable for special, incidental, indirect, punitive or consequential damages.

e) To waive the provisions of the Deceptive Trade Practices - Consumer Protection Act, to the extent permitted by law. We certify that the Fair Labor Standards Act of 1938, as amended, has been complied with in the production of goods and/or with respect to service furnished under this contract.

f) That this contract shall be governed by the law of the state where services are performed or materials are furnished.

g) That ACID SERVICES, LLC shall not be bound by any changes or modifications in this contract, except where such change or modification is made in writing by a duly authorized manager of ACID SERVICES, LLC.



TREATMENT REPORT 02541

Customer ID	Date
Customer <i>Castelli Explor</i>	<i>11-30-00</i>
Lease <i>Herrington</i>	Lease No.
	Well # <i>1-3</i>

Field Order # <i>2946</i>	Station <i>Pratt</i>	Casing	Depth	County <i>Comanche</i>	State <i>KS</i>
Type Job <i>Acid New Well</i>			Formation <i>Miss</i>	Legal Description <i>3-335-16W</i>	

PIPE DATA		PERFORATING DATA		FLUID USED		TREATMENT RESUME		
Casing Size <i>4 1/2</i>	Tubing Size <i>2 3/8</i>	Shots/Ft <i>4</i>		Acid <i>100% 115% MCA</i>		RATE	PRESS	ISIP <i>Val</i>
Depth	Depth	From <i>4885</i>	To <i>4894</i>	Pre Pad		Max <i>3.6</i>	<i>1400</i>	5 Min.
Volume	Volume	From	To	Pad		Min		10 Min.
Max Press	Max Press	From	To	Frac		Avg		15 Min.
Well Connection	Annulus Vol.	From	To			HHP Used		Annulus Pressure
Plug Depth <i>4915</i>	Packer Depth <i>4834</i>	From	To	Flush <i>870 gal</i>		Gas Volume		Total Load <i>44 BL</i>

Customer Representative <i>Tom Larson</i>	Station Manager <i>D Antry</i>	Treater <i>McFlemming</i>
--	-----------------------------------	------------------------------

Service Units <i>23</i>	<i>104</i>							
----------------------------	------------	--	--	--	--	--	--	--

Time	Casing Pressure	Tubing Pressure	Bbls. Pumped	Rate	0900 ON LOCATION Service Log
<i>0930</i>					<i>SET up Hold Safety Meeting</i>
<i>0937</i>		<i>0</i>			<i>1000 4 BL Acid</i>
<i>0958</i>	<i>0</i>			<i>5</i>	<i>START Water to Load Ann</i>
<i>10 08</i>	<i>600</i>		<i>48.8</i>		<i>Ann Loaded</i>
<i>1014</i>		<i>0</i>			<i>START Acid</i>
<i>10 21</i>		<i>500</i>	<i>17.9</i>		<i>Loaded</i>
<i>1023</i>		<i>700</i>			<i>Inc Press</i>
<i>1027</i>		<i>950</i>			<i>11 11</i>
<i>1034</i>		<i>1200</i>			<i>11 11</i>
<i>1037</i>		<i>1400</i>			<i>11 11 - Brake</i>
<i>1038</i>		<i>1000</i>	<i>20</i>	<i>3</i>	<i>Balls in - START Flush</i>
<i>1044</i>		<i>950</i>	<i>40</i>	<i>3.6</i>	<i>Flush in</i>
<i>1044</i>		<i>Val</i>			<i>ISIP</i>

Thank You!



INVOICE NO.
Date 11-28-00
Customer ID

Subject to Correction

FIELD ORDER

02993

CHARGE

Lease <i>Einsel</i>	Well # <i>1-11-00w</i>	Legal <i>Sec. 11-33-17w</i>
County <i>Comanche</i>	State <i>Ks.</i>	Station <i>Pratt</i>
Depth <i>5030</i>	Formation <i>FT. Scott</i>	Shoe Joint
Casing <i>4 1/2</i>	Casing Depth	TD
Customer Representative <i>Tom Larson</i>	Treater <i>Jim Strunk</i>	Job Type <i>Acid old well</i>

AFE Number	PO Number
------------	-----------

Materials Received by **X** *T.C. Larson*

Product Code	QUANTITY	MATERIAL, EQUIPMENT and SERVICES USED	UNIT PRICE	AMOUNT	ACCOUNTING	
					CORRECTION	AMOUNT
<i>A302</i>	<i>500</i>	<i>gals. 15% Acid</i>				
<i>A313</i>	<i>500</i>	<i>gals. DSFE Acid Conv.</i>				
<i>C110</i>	<i>1</i>	<i>gal. AHIB-1</i>				
<i>C240</i>	<i>2</i>	<i>gals. F-1</i>				
<i>C141</i>	<i>4</i>	<i>gals. CC-1 (KCL)</i>				
<i>E100</i>	<i>1</i>	UNITS <i>60</i> MILES				
		TONS MILES				
<i>E200</i>	<i>1</i>	EA. <i>Acid</i> PUMP CHARGE				
		<i>Discounted Price</i>		<i># 1651.98</i>		
		<i>Plus TAX</i>				

10244 NE Hwy 61 • P. O. Box 8613 • Pratt, KS 67124-8613 • Phone (316) 672-1201 • FAX (316) 672-5383 TOTAL

As consideration, the Customer agrees:

a) To pay ACID SERVICES, LLC in accord with the rates and terms stated in ACID SERVICES, LLC's current price list. Invoices are payable NET 30 after date of invoice. Upon Customers' default payment of Customer's account by the last day of the month following the month in which the invoice is dated, Customer agrees to pay interest thereon after default at the highest lawful contract rate applicable but never to exceed 18% per annum. In the event it becomes necessary to employ attorneys to enforce collection of said account, Customer agrees to pay all collection cost and attorney fees in the amount of the unpaid account.

b) To defend, indemnify, release and hold harmless ACID SERVICES, LLC, its divisions, subsidiaries, parent and affiliated companies and the officers, directors, employees, agents and servants of all of them from and against any claims, liability, expenses, attorney's fees, and costs of defense to the extent permitted by law for:

1. Damage to property owned by, in the possession of, or leased by Customer, and/or the well owner (if different from Customer), including, but not limited to, surface and subsurface damage. The term "well owner" shall include working and royalty interest owners.
2. Reservoir, formation, or well loss or damage, subsurface trespass or any action in the nature thereof.
3. Personal injury of death or property damage (including, but not limited to, damage to the reservoir, formation or well), or any damages whatsoever, growing out of or in any way connected with or resulting from pollution, subsurface pressure, losing control of the well and/or a well blowout or the use of radioactive material. The amount of this invoice is due and payable at ACID SERVICES, LLC, Dept. No. 1131, Tulsa, Oklahoma 74182. All terms of the Service Order with customer are incorporated herein and made a part hereof by reference.

The defense, indemnity, release and hold harmless obligations of Customer provided for in this Section b) and Section c) below shall apply to claims or liability even if caused or contributed to by ACID SERVICES, LLC's negligence, strict liability, or operated, or furnished by ACID SERVICES, LLC or any defect in the data, products, supplies, materials, or equipment of ACID SERVICES, LLC whether the preparation, design, manufacture, distribution, or marketing thereof, or from a failure to warn any person of such defect. Such defense, indemnity, release and hold harmless obligations of Customer shall not apply where the claims or liability are caused by the gross negligence or willful misconduct of ACID SERVICES, LLC. The term "ACID SERVICES, LLC" as used in said Sections b) and c) shall mean ACID SERVICES, LLC, its divisions, subsidiaries, parent and affiliated companies, and the officers, directors, employees, agents and servants of all of them.

c) That because of the uncertainty of variable well conditions and the necessity of relying on facts and supporting services furnished by others, ACID SERVICES, LLC is unable to guarantee the effectiveness of the products, supplies, or materials, nor the results of any treatment or service, nor the accuracy of any chart interpretation, research analysis, job recommendation or other data furnished by ACID SERVICES, LLC. ACID SERVICES, LLC personnel will use their best efforts in gathering such information and their best judgment in interpreting it, but Customer agrees that ACID SERVICES, LLC shall not be liable for and Customer shall indemnify ACID SERVICES, LLC against any damages from the use of such information.

d) That ACID SERVICES, LLC warrants only title to the products, supplies, and materials and that the same are free from defects in workmanship and materials. THERE ARE NO WARRANTIES, EXPRESS OR IMPLIED OF MERCHANTABILITY, FITNESS OR OTHERWISE WHICH EXTEND BEYOND THOSE STATED IN THE IMMEDIATELY PRECEDING SENTENCE. Acid Services LLC's liability and Customer's exclusive remedy in and cause of action (whether in contract, tort, breach of warranty or otherwise) arising out of the sale or use of any products, supplies or materials is expressly limited to the replacement of such products, supplies or materials on their return to ACID SERVICES, LLC or, at ACID SERVICES, LLC's option, to the allowance to the Customer of credit for the cost of such items. In no event shall ACID SERVICES, LLC be liable for special, incidental, indirect, punitive or consequential damages.

e) To waive the provisions of the Deceptive Trade Practices - Consumer Protection Act, to the extent permitted by law. We certify that the Fair Labor Standards Act of 1938, as amended, has been complied with in the production of goods and/or with respect to service furnished under this contract.

f) That this contract shall be governed by the law of the state where services are performed or materials are furnished.

g) That ACID SERVICES, LLC shall not be bound by any changes or modifications in this contract, except where such change or modification is made in writing by a duly authorized manager of ACID SERVICES, LLC.

2946

Cestili Explor
Heering 1-3

MISS

11-30-00

McFlemming

1000 gal 15% MC 11

50 Balls

PRESSURE

10 9 8 7 6 5 4 3 2 1 0

Flush in 25-0

Start Flush - Estab Rate

PRESSURE

10 9 8 7 6 5 4 3 2 0

INC DATA 16 15 14 13 12 11 10 9 8 7 6 5 4 3 2 0

INC Feeding

INC

PRESSURE

10 9 8 7 6 5 4 3 2 0

INC

INC PSI

Note Loaded
Start Balls

PRESSURE

FLOW RATE

10 9 8 7 6 5 4 3 2 1 0

FLOW RATE

10 9 8 7 6 5 4 3 2 1 0

FLOW RATE

10 9 8 7 6 5 4 3 2 1 0

FLOW RATE

CHART NO. HDL PDU-1

PRINTED IN U.S.A.

10 9 8 7 6 5 4 3 2 1 0

START Acid

Ann Loaded

PRESSURE

10 9 8 7 6 5 4 3 2 1 0

START WATER FLOOD AND

DRIP 4 BL Acid

GRAPHIC CONTROLS CORPORATION BUFFALO, NEW YORK

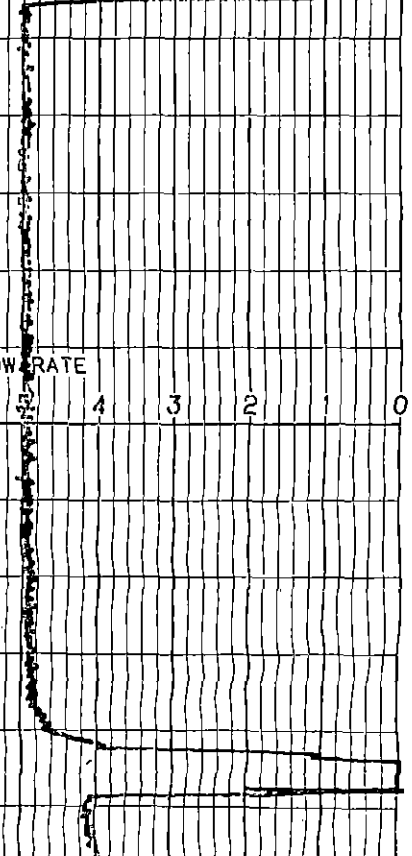
CHART NO. HDL PDU-1

10 9 8 7 6 5 4 3 2 1 0



FLOW RATE

10 9 8 7 6 5 4 3 2 1 0





INVOICE NO.
Date 11-28-00
Customer ID

FIELD ORDER

02994

Subject to Correction

CHARGE

Castelli Exploration

Lease Einsel	Well # 1-11-00WWS	Legal Sec. 11-33-17W
County Comanche	State KS	Station Pratt
Depth 5030	Formation FT. Scott	Shoe Joint
Casing 4 1/2	Casing Depth	TD
Customer Representative Tom Larson	Treater Jim Strunk	Job Type Acid old well

AFE Number	PO Number
------------	-----------

Materials Received by **X** T.C. Jarson

Product Code	QUANTITY	MATERIAL, EQUIPMENT and SERVICES USED	UNIT PRICE	AMOUNT	ACCOUNTING	
					CORRECTION	AMOUNT
A302	3000	gals. 15% Acid				
A312	3000	gals. FE Acid Conv.				
C110	6	gals. AH1B-1				
C240	12	gals. F-1				
C142	6	gals. CC-2				
C170	40	Ball Sealers				
E701	1	Ball Injector				
E100	1	UNITS 60 MILES				
		TONS MILES				
E200	1	EA. Acid PUMP CHARGE				
		Discounted Price		\$ 4760.25		
		Plus TAX				

49290

As consideration, the Customer agrees:

a) To pay ACID SERVICES, LLC in accord with the rates and terms stated in ACID SERVICES, LLC's current price list. Invoices are payable NET 30 after date of invoice. Upon Customer's default payment of Customer's account by the last day of the month following the month in which the invoice is dated, Customer agrees to pay interest thereon after default at the highest lawful contract rate applicable but never to exceed 18% per annum. In the event it becomes necessary to employ attorneys to enforce collection of said account, Customer agrees to pay all collection cost and attorney fees in the amount of the unpaid account.

b) To defend, indemnify, release and hold harmless ACID SERVICES, LLC, its divisions, subsidiaries, parent and affiliated companies and the officers, directors, employees, agents and servants of all of them from and against any claims, liability, expenses, attorney's fees, and costs of defense to the extent permitted by law for:

1. Damage to property owned by, in the possession of, or leased by Customer, and/or the well owner (if different from Customer), including, but not limited to, surface and subsurface damage. The term "well owner" shall include working and royalty interest owners.
2. Reservoir, formation, or well loss or damage, subsurface trespass or any action in the nature thereof.
3. Personal injury of death or property damage (including, but not limited to, damage to the reservoir, formation or well), or any damages whatsoever, growing out of or in any way connected with or resulting from pollution, subsurface pressure, losing control of the well and/or a well blowout or the use of radioactive material. The amount of this invoice is due and payable at ACID SERVICES, LLC, Dept. No. 1131, Tulsa, Oklahoma 74182. All terms of the Service Order with customer are incorporated herein and made a part hereof by reference.

The defense, indemnity, release and hold harmless obligations of Customer provided for in this Section b) and Section c) below shall apply to claims or liability even if caused or contributed to by ACID SERVICES, LLC's negligence, strict liability, or operated, or furnished by ACID SERVICES, LLC or any defect in the data, products, supplies, materials, or equipment of ACID SERVICES, LLC whether the preparation, design, manufacture, distribution, or marketing thereof, or from a failure to warn any person of such defect. Such defense, indemnity, release and hold harmless obligations of Customer shall not apply where the claims or liability are caused by the gross negligence or willful misconduct of ACID SERVICES, LLC. The term "ACID SERVICES, LLC" as used in said Sections b) and c) shall mean ACID SERVICES, LLC, its divisions, subsidiaries, parent and affiliated companies, and the officers, directors, employees, agents and servants of all of them.

c) That because of the uncertainty of variable well conditions and the necessity of relying on facts and supporting services furnished by others, ACID SERVICES, LLC is unable to guarantee the effectiveness of the products, supplies, or materials, nor the results of any treatment or service, nor the accuracy of any chart interpretation, research analysis, job recommendation or other data furnished by ACID SERVICES, LLC. ACID SERVICES, LLC personnel will use their best efforts in gathering such information and their best judgment in interpreting it, but Customer agrees that ACID SERVICES, LLC shall not be liable for and Customer shall indemnify ACID SERVICES, LLC against any damages from the use of such information.

d) That ACID SERVICES, LLC warrants only title to the products, supplies, and materials and that the same are free from defects in workmanship and materials. THERE ARE NO WARRANTIES, EXPRESS OR IMPLIED OF MERCHANTABILITY, FITNESS OR OTHERWISE WHICH EXTEND BEYOND THOSE STATED IN THE IMMEDIATELY PRECEDING SENTENCE. Acid Services LLC's liability and Customer's exclusive remedy in and cause of action (whether in contract, tort, breach of warranty or otherwise) arising out of the sale or use of any products, supplies or materials is expressly limited to the replacement of such products, supplies or materials on their return to ACID SERVICES, LLC or, at ACID SERVICES, LLC's option, to the allowance to the Customer of credit for the cost of such items. In no event shall ACID SERVICES, LLC be liable for special, incidental, indirect, punitive or consequential damages.

e) To waive the provisions of the Deceptive Trade Practices - Consumer Protection Act, to the extent permitted by law. We certify that the Fair Labor Standards Act of 1938, as amended, has been complied with in the production of goods and/or with respect to service furnished under this contract.

f) That this contract shall be governed by the law of the state where services are performed or materials are furnished.

g) That ACID SERVICES, LLC shall not be bound by any changes or modifications in this contract, except where such change or modification is made in writing by a duly authorized manager of ACID SERVICES, LLC.



TREATMENT REPORT 02650

Customer ID		Date	
Customer <i>CASTELL Exp.</i>		<i>11-28-00</i>	
Lease <i>Einzel</i>		Lease No.	Well # <i>1-11-0ww0</i>
Field Order # <i>02994</i>	Station <i>Pratt</i>	Casing <i>4 1/2</i>	Depth
Type Job <i>Acid Old Well</i>	Formation <i>FT. Scott</i>	County <i>Comanche</i>	State <i>Ks</i>
Legal Description <i>Sec. 11-33-17W</i>			

PIPE DATA		PERFORATING DATA		FLUID USED		TREATMENT RESUME		
Casing Size <i>4 1/2</i>	Tubing Size <i>2 3/8</i>	Shots/Ft <i>4</i>		Acid <i>3,000 gals. 15% FE</i>		RATE	PRESS	ISIP <i>1000</i>
Depth	Depth <i>5002</i>	From <i>5030</i>	To <i>5036</i>	Pfe Pad <i>F-1</i>		Max <i>3 1/2</i>	<i>1800</i>	5 Min.
Volume	Volume <i>19</i>	From	To	Pad <i>40 Ball Sealers</i>		Min <i>1</i>	<i>600</i>	10 Min.
Max Press	Max Press	From	To	Frac		Avg <i>2</i>	<i>1200</i>	15 Min.
Well Connection	Annulus Vol.	From	To			HHP Used		Annulus Pressure
Plug Depth	Packer Depth <i>5002</i>	From	To	Flush <i>19 Bbls.</i>		Gas Volume		Total Load <i>91 Bbls.</i>

Customer Representative <i>Tom Larson</i>	Station Manager <i>DAVE ATRY</i>	Treater <i>D.J. Brown & Jim Strunk</i>
--	-------------------------------------	---

Time	Casing Pressure	Tubing Pressure	Bbls. Pumped	Rate	Service Log
<i>4:15</i>					<i>Arrive on Location Hold SAFTY Meeting Packer Set</i>
<i>4:38</i>					<i>START WATER down ANN. To Re-load</i>
<i>4:49</i>	<i>500</i>		<i>23</i>		<i>ANN. Loaded & Press. up STOP standby - swab Tbg.</i>
<i>5:24</i>		<i>100</i>			<i>START Pump Acid down Tbg.</i>
<i>5:27</i>		<i>0</i>	<i>20</i>	<i>3</i>	<i>START INJECT BALLS</i>
<i>5:28</i>		<i>500</i>	<i>23 1/2</i>	<i>3 1/2</i>	<i>Press. Climb</i>
<i>5:32</i>		<i>1400</i>	<i>38</i>	<i>3</i>	<i>Press. Break</i>
<i>5:33</i>		<i>1200</i>	<i>41</i>	<i>3</i>	<i>Feeding BALLS to Bottom</i>
<i>5:41</i>		<i>1400</i>	<i>62</i>	<i>3</i>	<i>BALL ACTION</i>
<i>5:46</i>		<i>1700</i>	<i>72</i>	<i>2 1/2</i>	<i>BALL OFF, STOP 3000 Acid + 40 BALLS dv. Tbg.</i>
<i>5:51</i>		<i>600</i>			<i>START WATER</i>
<i>5:57</i>		<i>1100</i>	<i>80</i>	<i>1 3/4</i>	<i>Feeding</i>
<i>5:57</i>		<i>1800</i>	<i>85</i>		<i>BALL OFF STOP Bleed BACK to Release BALLS</i>
<i>6:08</i>		<i>500</i>			<i>START PUMP</i>
<i>6:10</i>		<i>1000</i>		<i>2</i>	<i>Feeding</i>
<i>6:15</i>		<i>1200</i>	<i>91</i>	<i>2</i>	<i>19 Bbls WATER dn. Tbg. STOP</i>

Job Complete

Field Receipt 02994
Company CASTELL Expl.
Lease-Well EINSEL #1-11-OWWO
Formation ETL
Date 11-28-00
Treater Jim STRUNK
D.J.



INVOICE NO.	Subject to Correction			FIELD ORDER	02949
Date 12-1-00	Lease Einsel	Well # 1-11	Legal 11-33-174		
Customer ID	County Comanche	State KS	Station PRATT		
C H A R G E Castelli Explor	Depth	Formation Ft Scott	Shoe Joint		
	Casing	Casing Depth	TD	Job Type Frac New Well	
Customer Representative Tom Larson		Treater M C Flemming			
AFE Number	PO Number	Materials Received by X T.C. Larson			

Product Code	QUANTITY	MATERIAL, EQUIPMENT and SERVICES USED	UNIT PRICE	AMOUNT	ACCOUNTING	
					CORRECTION	AMOUNT
C200	207	lbs A Gel				
C121	1	gal 13i O-3				
C164	1	gal BREAKER E				
C141	6	gal C(-)				
C230	6	gal S-1				
C240	13	gal F-1				
P105	10	WT 20/40 OTTOW				
P400	10	WT 20/40 Pump Chen				
E501	3 HR	TG 1000 Frac Pump Foam				
B100	3 HR	Blender 4 HR				
E601	1 Ea	chem inj Pump				
E100	15 mi	UNITS 3 MILES 5				
F104	375 TM	TONS 5.0 MILES 75				
		EA. PUMP CHARGE				
		Discount Price		5059.60		
		Plus Tax				

As consideration, the Customer agrees:

- a) To pay ACID SERVICES, LLC in accord with the rates and terms stated in ACID SERVICES, LLC's current price list. Invoices are payable NET 30 after date of invoice. Upon Customers' default payment of Customer's account by the last day of the month following the month in which the invoice is dated, Customer agrees to pay interest thereon after default at the highest lawful contract rate applicable but never to exceed 18% per annum. In the event it becomes necessary to employ attorneys to enforce collection of said account, Customer agrees to pay all collection cost and attorney fees in the amount of the unpaid account.
- b) To defend, indemnify, release and hold harmless ACID SERVICES, LLC, its divisions, subsidiaries, parent and affiliated companies and the officers, directors, employees, agents and servants of all of them from and against any claims, liability, expenses, attorney's fees, and costs of defense to the extent permitted by law for:
1. Damage to property owned by, in the possession of, or leased by Customer, and/or the well owner (if different from Customer), including, but not limited to, surface and subsurface damage. The term "well owner" shall include working and royalty interest owners.
 2. Reservoir, formation, or well loss or damage, subsurface trespass or any action in the nature thereof.
 3. Personal injury of death or property damage (including, but not limited to, damage to the reservoir, formation or well), or any damages whatsoever, growing out of or in any way connected with or resulting from pollution, subsurface pressure, losing control of the well and/or a well blowout or the use of radioactive material. The amount of this invoice is due and payable at ACID SERVICES, LLC, Dept. No. 1131, Tulsa, Oklahoma 74182. All terms of the Service Order with customer are incorporated herein and made a part hereof by reference.

The defense, indemnity, release and hold harmless obligations of Customer provided for in this Section b) and Section c) below shall apply to claims or liability even if caused or contributed to by ACID SERVICES, LLC's negligence, strict liability, or operated, or furnished by ACID SERVICES, LLC or any defect in the data, products, supplies, materials, or equipment of ACID SERVICES, LLC whether the preparation, design, manufacture, distribution, or marketing thereof, or from a failure to warn any person of such defect. Such defense, indemnity, release and hold harmless obligations of Customer shall not apply where the claims or liability are caused by the gross negligence or willful misconduct of ACID SERVICES, LLC. The term "ACID SERVICES, LLC" as used in said Sections b) and c) shall mean ACID SERVICES, LLC, its divisions, subsidiaries, parent and affiliated companies, and the officers, directors, employees, agents and servants of all of them.

c) That because of the uncertainty of variable well conditions and the necessity of relying on facts and supporting services furnished by others, ACID SERVICES, LLC is unable to guarantee the effectiveness of the products, supplies, or materials, nor the results of any treatment or service, nor the accuracy of any chart interpretation, research analysis, job recommendation or other data furnished by ACID SERVICES, LLC. ACID SERVICES, LLC personnel will use their best efforts in gathering such information and their best judgment in interpreting it, but Customer agrees that ACID SERVICES, LLC shall not be liable for and Customer shall indemnify ACID SERVICES, LLC against any damages from the use of such information.

d) That ACID SERVICES, LLC warrants only title to the products, supplies, and materials and that the same are free from defects in workmanship and materials. THERE ARE NO WARRANTIES, EXPRESS OR IMPLIED OF MERCHANTABILITY, FITNESS OR OTHERWISE WHICH EXTEND BEYOND THOSE STATED IN THE IMMEDIATELY PRECEDING SENTENCE. Acid Services LLC's liability and Customer's exclusive remedy in and cause of action (whether in contract, tort, breach of warranty or otherwise) arising out of the sale or use of any products, supplies or materials is expressly limited to the replacement of such products, supplies or materials on their return to ACID SERVICES, LLC or, at ACID SERVICES, LLC's option, to the allowance to the Customer of credit for the cost of such items. In no event shall ACID SERVICES, LLC be liable for special, incidental, indirect, punitive or consequential damages.

e) To waive the provisions of the Deceptive Trade Practices - Consumer Protection Act, to the extent permitted by law. We certify that the Fair Labor Standards Act of 1938, as amended, has been complied with in the production of goods and/or with respect to service furnished under this contract.

f) That this contract shall be governed by the law of the state where services are performed or materials are furnished.

g) That ACID SERVICES, LLC shall not be bound by any changes or modifications in this contract, except where such change or modification is made in writing by a duly authorized manager of ACID SERVICES, LLC.



TREATMENT REPORT 02544

Customer ID _____ Date _____
 Customer Castelli Explor
 Lease Pinsel Lease No. 12-1-00 Well # 1-11
 Field Order # 2949 Station Pratt Casing _____ Depth _____ County Comanche State KS
 Type Job Frac New Well Formation ~~Alton~~ FT Scott Legal Description 11-335-174

PIPE DATA		PERFORATING DATA		FLUID USED		TREATMENT RESUME		
Casing Size	Tubing Size	Shots/Ft		Acid	Rate	Press	ISIP	
<u>4 1/2</u>	<u>2 3/8</u>	<u>4</u>					<u>2700</u>	
Depth	Depth	From	To	Pre Pad	Max			5 Min.
		<u>5030</u>	<u>5036</u>		<u>5</u>	<u>3200</u>		
Volume	Volume	From	To	Pad	Min			10 Min.
	<u>19.6</u>			<u>5000 gal 70% Foam</u>	<u>5</u>			
Max Press	Max Press	From	To	Frac	Avg			15 Min.
	<u>3200</u>			<u>8000 gal 70% Foam</u>	<u>5</u>			
Well Connection	Annulus Vol.	From	To		HHP Used			Annulus Pressure
Plug Depth	Packer Depth	From	To	Flush	Gas Volume			Total Load
<u>5166</u>	<u>5012</u>			<u>9 gal 70% Foam</u>				<u>6136</u>

Customer Representative Tom Larson Station Manager D. Austry Treater McFlemming

Service Units: 40 36-53 33 104

Time	Casing Pressure	Tubing Pressure	Bbls. Pumped	Rate	Service Log
					1300 ON LOC
					Set up Hold Safety Meeting
					TEST LINE
1428		2400			
1429		200		1.5-5	START 5000 gal Foam Pad
1451		2900	36	1.5-5	START 2000 gal w/ 1/2" gal 2d180
1456		3000	43		Cut Sand 1/2" ON BOTTOM
1502		3100	53		Cut Sand
1507		3100	61	1.5-5	Flush in

Thank You!

2949
Castelli Explorer
Einsel 1-11
FT Scott
12-1-00
MCFleming

PRESSURE
10 9 8 7 6 5 4 3 2 1 0

FLOW RATE
10 9 8 7 6 5 4 3 2 1 0

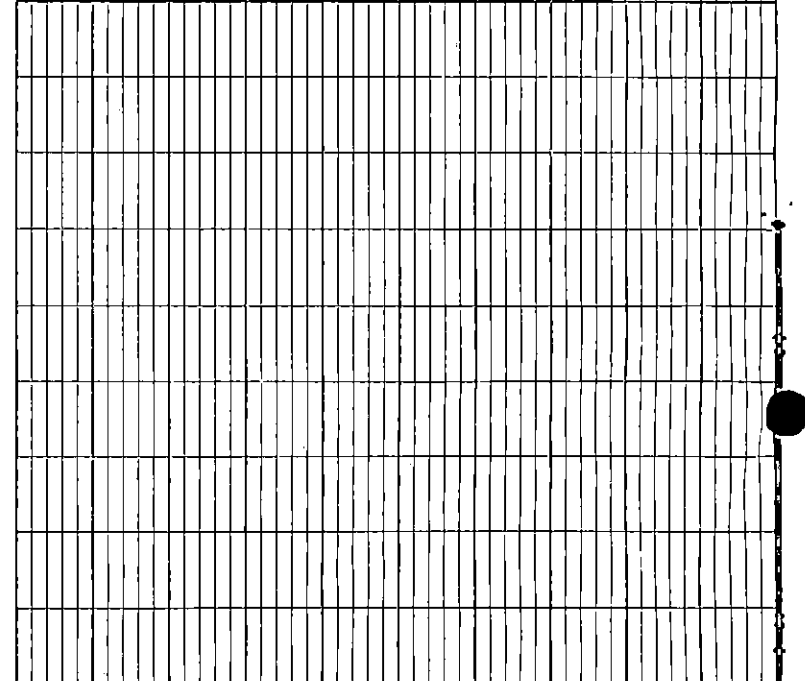
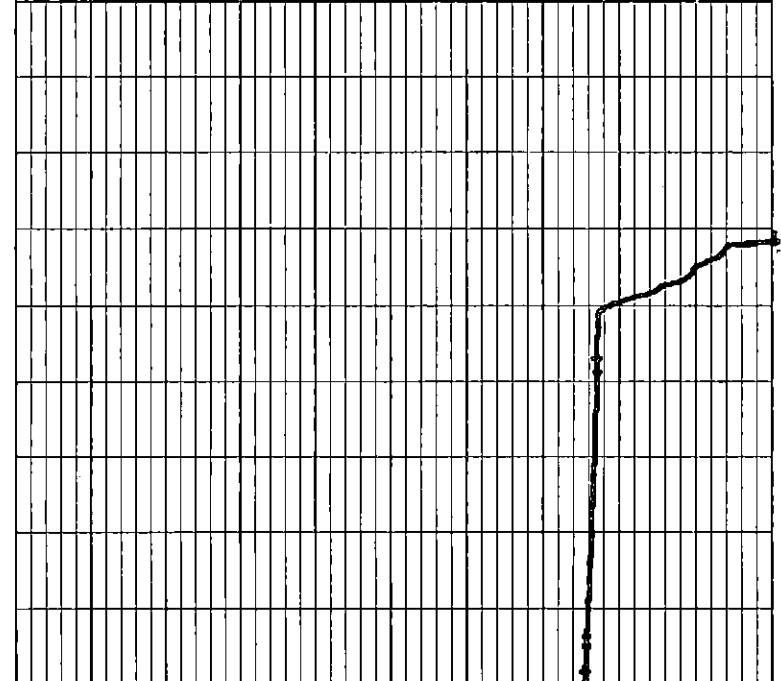
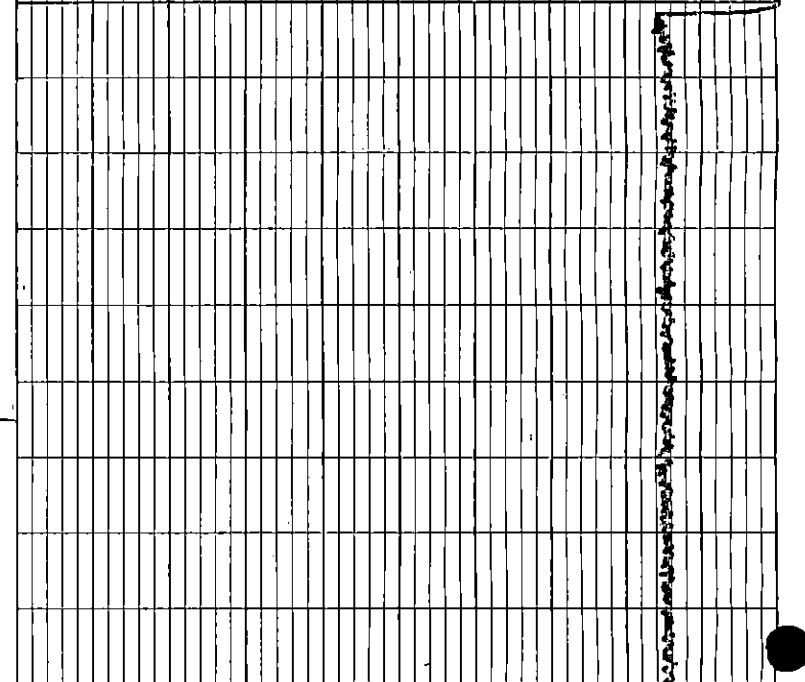
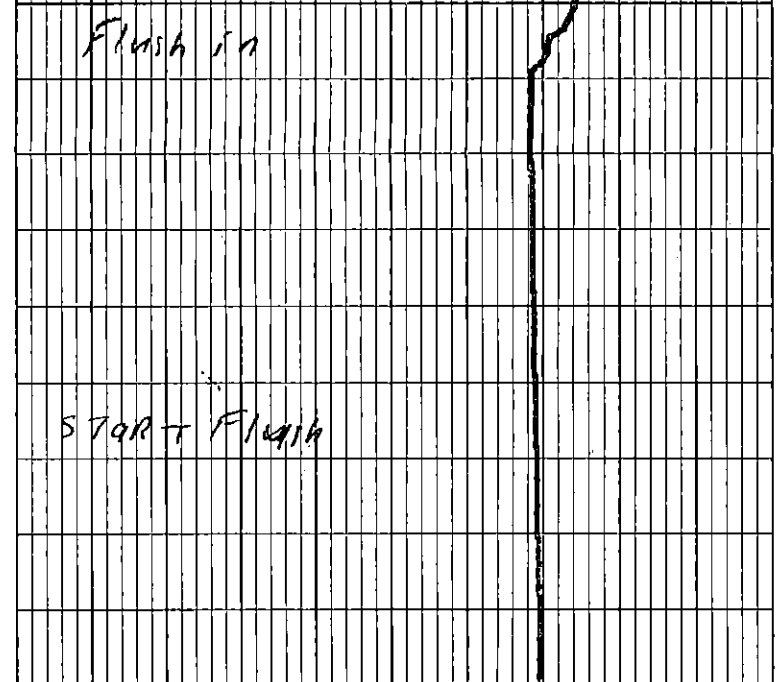


CHART NO. HDL PDU-1

PRESSURE
10 9 8 7 6 5 4 3 2 1 0

FLOW RATE
10 9 8 7 6 5 4 3 2 1 0

Flush in



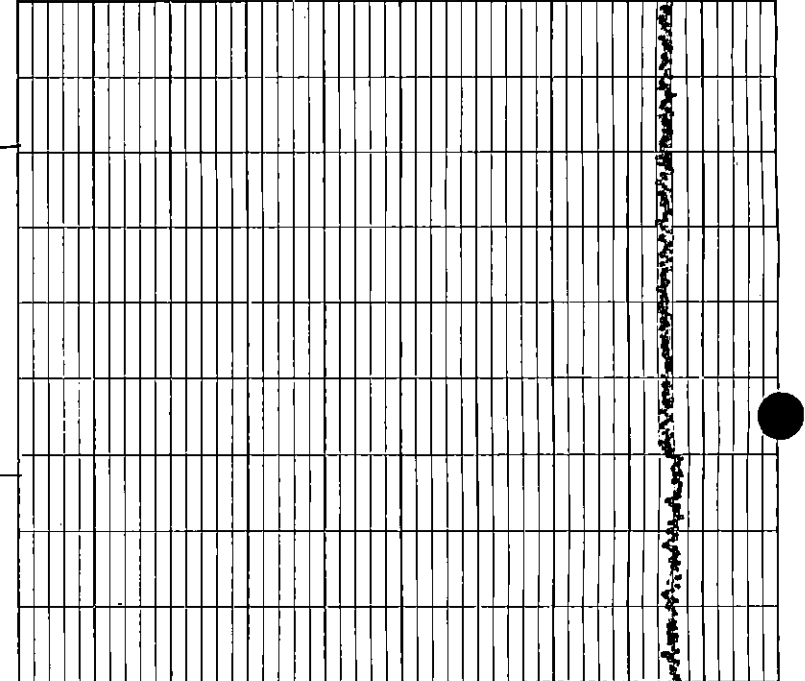
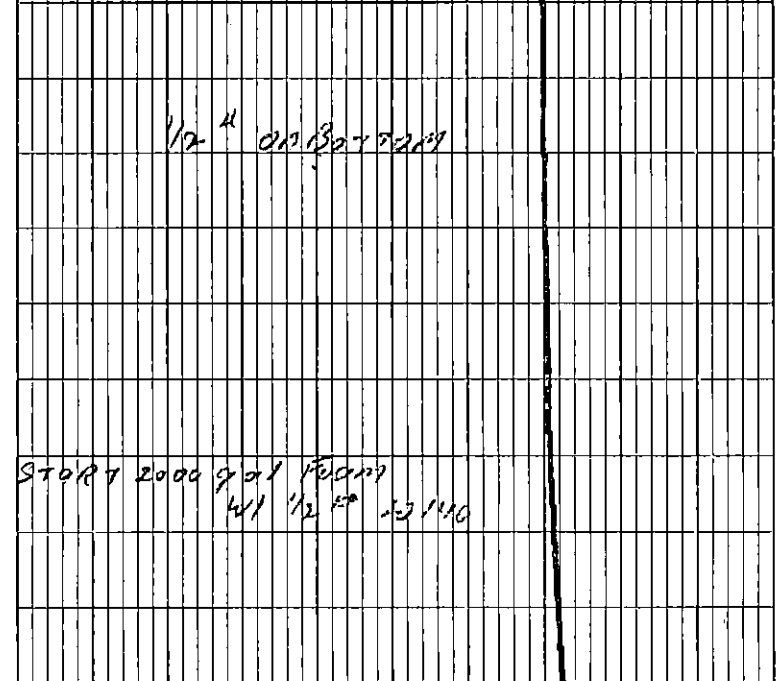
START Flush

PRINTED IN U.S.A.

PRESSURE
10 9 8 7 6 5 4 3 2 1 0

FLOW RATE
10 9 8 7 6 5 4 3 2 1 0

1/2" on bottom

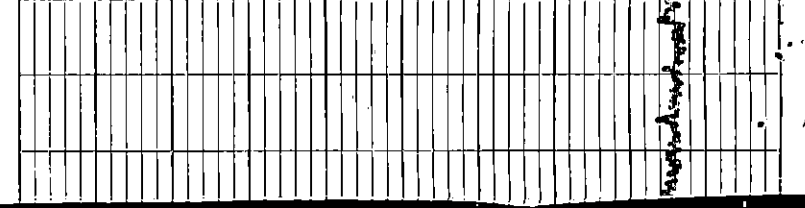
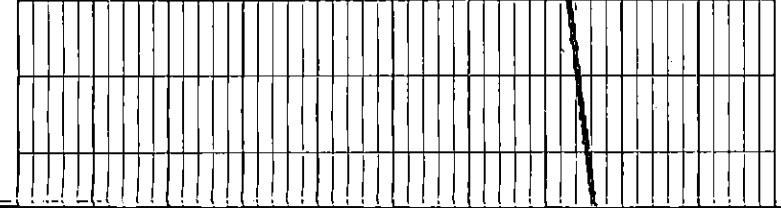


GRAPHIC CONTROLS CORPORATION BUFFALO, NEW YORK

START 2000 gal from
w/ 1/2" 12/1/00

PRESSURE
10 9 8 7 6 5 4 3 2 1 0

FLOW RATE
10 9 8 7 6 5 4 3 2 1 0

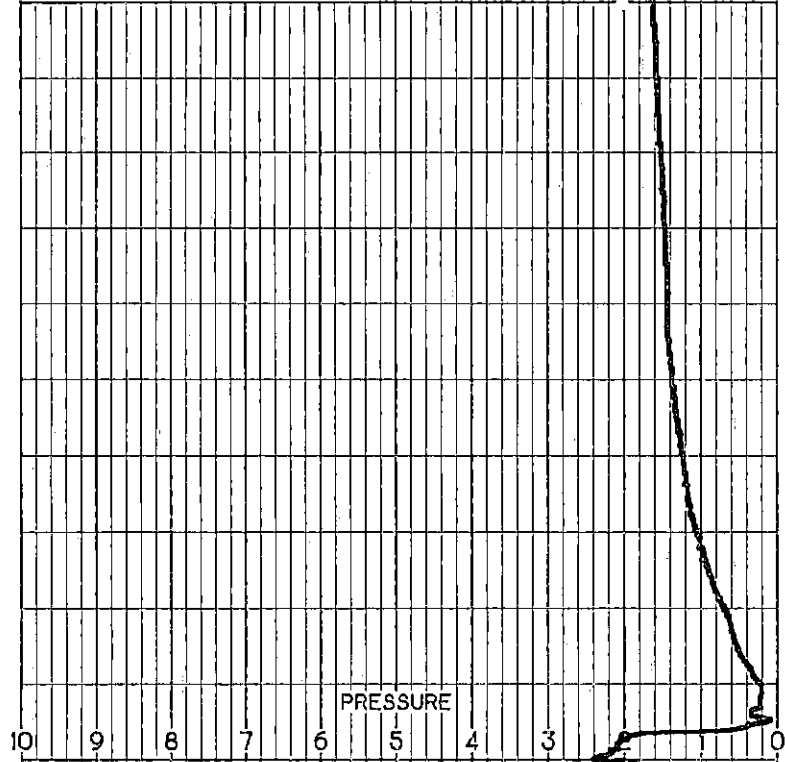


1/2"

CHART NO. HDL PDU-1

PRESSURE

10 9 8 7 6 5 4 3 2 1 0



Test 1

FLOW RATE

10 9 8 7 6 5 4 3 2 1 0

