

15-151-21868-0000
 STATE OF KANSAS - CORPORATION COMMISSION
 PRODUCTION TEST & GOR REPORT

Conservation Division Form C-5 Revised

TYPE TEST: (Initial) Annual Workover Reclassification TEST DATE: 2/18/88

Company Lease Well No.
 Texas Energies-Woods Petroleum Mardis "G" 1-35

County Location Section Township Range Acres
 Pratt C SE SE NW 35 26S 12W 20

Field Reservoir Pipeline Connection (future)
 Stead, South Mississippian Inland/Republic Natural Gas

Completion Date Type Completion(Describe) Plug Back T.D. Packer Set At
 2/4/88 acid & frac - tubing 4276' N/A

Production Method: Type Fluid Production API Gravity of Liquid/Oil
 Flowing Pumping Gas Lift oil & water 44.8 API at 66°F

Casing Size Weight I.D. Set At Perforations To
 4½" 10.5 #/FT 4358' 4136' 4166'

Tubing Size Weight I.D. Set At Perforations To
 2 3/8" 4/7 #/FT 4211 (S.N.) 4211

Pretest: Duration Hrs.
 Starting Date Time Ending Date Time

Test: Duration Hrs.
 Starting Date 2/17/88 Time 9:30 a.m. Ending Date 2/18/88 Time 9:30 a.m. 24

OIL PRODUCTION OBSERVED DATA

Producing Wellhead Pressure		Separator Pressure		Choke Size					
Casing:	140 psi	Tubing:	180 psi	66 psi					
Bbls./In.	Tank	Starting Gauge		Ending Gauge		Net Prod. Bbls.			
	Size Number	Feet	Inches	Barrels	Feet	Inches	Barrels	Water	Oil
Test:	300 3950	10	7½	212.53	14	7½	292.11		79.58
Test:	300 3951	5	11	118.37	7	9½	155.87	135	37.50
Test:									117.08 total

GAS PRODUCTION OBSERVED DATA

Orifice Meter Connections			Orifice Meter Range			Static Pressure:		
Pipe Taps:	Flange Taps:	Differential:						
Measuring Device	Run-Prover-Tester Size	Orifice Size	Meter-Prover-Tester Pressure		Diff. Press. (hw) or (hd)	Gravity Gas (Gg)	Flowing Temp. (t)	
Orifice Meter			In. Water	In. Merc.	Psig or (Pd)			
Critical Flow Prover							2-24-88	
Orifice Well Tester	2"	3/8"			22		7978	60°F

GAS FLOW RATE CALCULATIONS (R)

Coeff. (Fb)(Fp)(OWTC)	Meter-Prover Press. (Psa)(Pm)	Extension √hw x Pm	Gravity Factor (Fg)	Flowing Temp. Factor (Ft)	Deviation Factor (Fpv)	Chart Factor (Fd)
	34.4		.86722	1.000	1	1

Gas Prod. MCFD Oil Prod. Bbls./Day: 117.08 Gas/Oil Ratio (GOR) = 793 Cubic Ft. per Bbl.
 Flow Rate (R): 92.79

The undersigned authority, on behalf of the Company, states that he is duly authorized to make the above report and that he has knowledge of the facts stated therein, and that said report is true and correct. Executed this the 18th day of February 19 88

For Offset Operator *Stephen J. Geife* *Mark P. Stevenson*
 For State For Company

15-151-21868-0000

THURSDAY

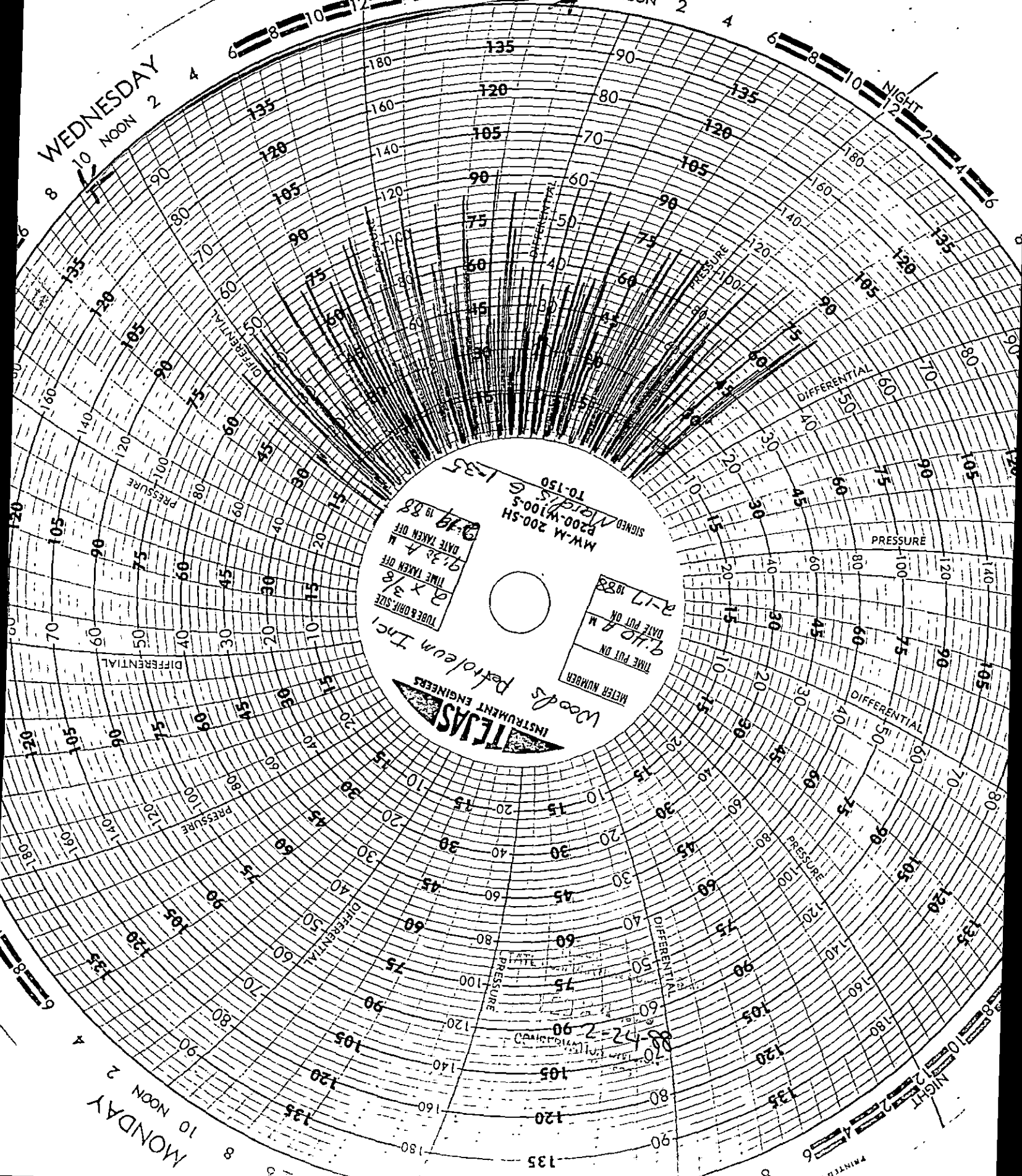
WEDNESDAY

NIGHT

NIGHT

NIGHT

MONDAY



METER NUMBER 9108 M
 DATE PUT ON 2-17-88
 WOODS Petroleum Inc.
 INSTRUMENT ENGINEERS
 TUBE & DIA. SIZE 2 x 3/8
 TIME TAKEN OFF 9:32 A
 DATE TAKEN OFF 9-19-88
 M.M.-M 200-SH
 200-W100-S
 SIGNED *M. J. S.*
 10-150
 6-135
 88-172-2-90
 88-172-2-90
 88-172-2-90

PRINTED IN U.S.A.