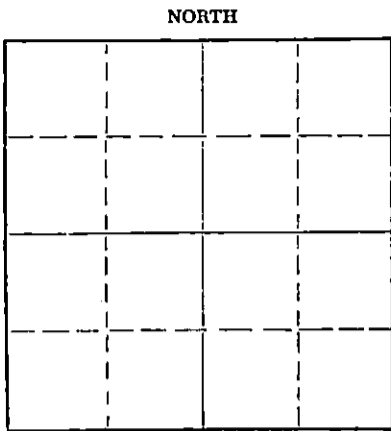


STATE OF KANSAS  
STATE CORPORATION COMMISSION

Form CP-4

Give All Information Completely  
Make Required Affidavit  
Mail or Deliver Report to:  
Conservation Division  
State Corporation Commission  
212 No. Market  
Wichita, Kansas

WELL PLUGGING RECORD



Locate well correctly on above  
Section Plat

Pratt County, Sec. 29 Twp. 26S Rge. (E) 14 (W)  
Location as "NE/CNW/SW" or footage from lines NE NW  
Lease Owner Strata Drilling, Inc. & Etal.  
Lease Name Schoonover Well No. 1  
Office Address P. O. Box 355, Great Bend, Kansas 67530  
Character of Well (completed as Oil, Gas or Dry Hole) Dry Hole  
Date well completed September 25 1967  
Application for plugging filed September 25 1967  
Application for plugging approved September 25 1967  
Plugging commenced September 25 1967  
Plugging completed September 25 1967  
Reason for abandonment of well or producing formation Dry Hole

If a producing well is abandoned, date of last production 19  
Was permission obtained from the Conservation Division or its agents before plugging was commenced? Yes

Name of Conservation Agent who supervised plugging of this well Archie Elving, Pratt, Kansas  
Producing formation Depth to top Bottom Total Depth of Well 4650 Feet  
Show depth and thickness of all water, oil and gas formations.

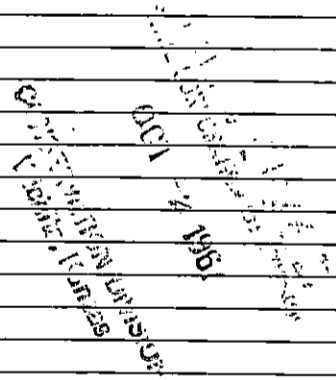
OIL, GAS OR WATER RECORDS

CASING RECORD

FORMATION	CONTENT	FROM	TO	SIZE	PUT IN	PULLED OUT
	8-5/8"	0	340'			

Describe in detail the manner in which the well was plugged, indicating where the mud fluid was placed and the method or methods used in introducing it into the hole. If cement or other plugs were used, state the character of same and depth placed, from feet to feet for each plug set.

Plugged hole as follows: plugged at 300' with 25 sacks of cement and mud to 40', plugged at 40' with 10 sacks of cement, two sacks of cement in rat hole and 2 sacks of cement in mouse hole. Plug down at 10:00 A. M. September 25, 1967.



(If additional description is necessary, use BACK of this sheet)

Name of Plugging Contractor Strata Drilling, Inc.  
Address P. O. Box 355, Great Bend, Kansas 67530

STATE OF KANSAS, COUNTY OF BARTON, ss.  
Jim B. McWilliams (employee of owner) or (owner/operator) of the above-described well, being first duly sworn on oath, says: That I have knowledge of the facts, statements, and matters herein contained and the log of the above-described well as filed and that the same are true and correct. So help me God.

(Signature) Jim B. McWilliams  
Jim B. McWilliams, Secy-Treas.  
P. O. Box 355, Great Bend, Kansas 67530  
(Address)

SUBSCRIBED AND SWORN TO before me this 27th day of September, 1967

My commission expires December 14, 1969

Elaine H. Taylor  
Elaine H. Taylor Notary Public.

D R I L L E R S   L O G

#1 Schoonover

CASING RECORD:  
340' of new 8-5/8"  
surface casing.

COMPANY:      Strata Drilling, Inc. Etal.  
CONTRACTOR:   Strata Drilling, Inc.

DESCRIPTION:   NE NW  
Section 29-26S-14W  
Pratt County, Kansas

TOTAL DEPTH:  
4650'

COMMENCED:   September 8, 1967  
COMPLETED:   September 25, 1967

ELEVATION: 2017' RB

D. & A.

<u>FORMATION</u>	<u>FROM</u>	<u>TO</u>	<u>REMARKS</u>
Surface Clay & Sand	0	70	Ran 340' of new 8-5/8" surface casing; set and cemented at 340' with 220 sacks of common cement. Plug down at 4:30 A. M. September 10, 1967.
Shale, Shells & Sand	70	775	
Shale & Shells	775	2110	
Shale & Lime	2110	2498	
Shale & Shells	2498	2660	
Shale	2660	3041	
Shale & Lime	3041	3908	
Lime	3908	4293	
Lime-Chert	4293	4373	
Cherty Lime & Shale	4373	4410	
Lime	4410	4490	
Lime & Shale	4490	4533	
Lime	4533	4650	

Total Depth 4650'

FILED  
 OCT - 2 1967  
 STATE OF KANSAS  
 COUNTY OF BARTON

D. & A.

Plugged hole as follows: plugged at 300' with 25 sacks of cement and mud to 40'; plugged at 40' with 10 sacks of cement, two sacks of cement in rat hole and two sacks of cement in mouse hole. Plug down at 10:00 A. M. September 25, 1967.

STATE OF KANSAS )  
                          ) ss.  
COUNTY OF BARTON)

I certify that this is a true and correct copy of the above log to the best of my knowledge.

STRATA DRILLING, INC.

*Jim B. McWilliams*  
 \_\_\_\_\_  
 Jim B. McWilliams, Secy-Treas.

Subscribed and sworn to before me this 27th day of September, 1967.

My Commission Expires:

December 14, 1969

*Elaine H. Taylor*  
 \_\_\_\_\_  
 Elaine H. Taylor, Notary Public