

1080244

To: STATE CORPORATION COMMISSION  
CONSERVATION DIVISION - PLUGGING SECTION  
200 COLORADO DERBY BUILDING  
WICHITA, KANSAS 67202

API NUMBER 15- 151-20,771-00-00

NW SE NW, SEC. 33, T 27 S, R 12 W/EK  
3630 feet from ~~XXXX~~ SE Corner of section line  
3630 feet from ~~XXXX~~ SE Corner of section line

TECHNICIAN'S PLUGGING REPORT

Operator License # 5228

Lease Name Bergner Well # 1

Operator: Parrish Corporation  
Name & Address: 110 North Market, Suite 201  
Wichita, KS 67202

County Pratt

Well Total Depth 4503 146.35 feet

Conductor Pipe: Size \_\_\_\_\_ feet

Surface Casing: Size 8 5/8 feet 450

Abandoned Oil Well  Gas Well \_\_\_\_\_ Input Well \_\_\_\_\_ SWD Well \_\_\_\_\_ O&A \_\_\_\_\_

Other well as hereinafter indicated \_\_\_\_\_

Plugging Contractor Kelso Casing Pulling License Number 6050

Address Box 347, Chase, KS 67524

Company to plug at: Hour: noon Day: 25 Month: October Year: 19 84

Plugging proposal received from Clay Duntz

(company name) Kelso (phone) 316-938-2457

were: 4 1/2" set at 3975' Perfs at 3922-27' Plug at 3850' Perfs at 3704-14'

1st plug sand back to 3650' and dump 4 sx cement on top of sand through bailer

2nd plug squeeze well with 3 sx hulls, 10 sx gel, 50 sx cement, 10 sx gel, 1 sack hulls,

release 8 5/8" rubber plug and pump 125 sx cement.

Plugging Proposal Received by J. H. Metz  
(TECHNICIAN)

Plugging Operations attended by Agent?: All  Part \_\_\_\_\_ None \_\_\_\_\_

Operations Completed: Hour: 3:15 pm Day: 25 Month: October Year: 19 84

ACTUAL PLUGGING REPORT 4 1/2" set at 3975' Perfs at 3922-27 & 3704-14' Plug at 3850'

1st plug sanded back to 3650' and dumped 4 sx cement on top of sand through bailer,

2nd plug squeezed well with 3 sx hulls, 10 sx gel, 50 sx cement, 10 sx gel, 1 sack hulls,

released 8 5/8" rubber plug and pumped an additional 125 sx cement.

RECEIVED STATE CORPORATION COMMISSION

Well on vacuum - Maximum pressure 0 and shut in pressure 0

OCT 31 1984

CONSERVATION DIVISION  
Wichita, Kansas

Remarks: Recovered 2802' of 4 1/2" casing. Cemented by Halliburton  
(If additional description is necessary, use BACK of this form.)

(If desired, observer this plugging.)

INVOICED

DATE 11-7-84

Signed J. H. Metz  
(TECHNICIAN)

INV. NO. 4684



LOGGING DATA

RUN NO	GENERAL DEPTHS		SPEED FT/MIN.	T.C. SEC.	GAMMA RAY			T.C. SEC.	SENS. SETTINGS	NEUTRON		
	FROM	TO			ZERO DIV. L OR R	API G.R. UNITS PER LOG DIV.	ZERO DIV. L OR R			API N PER LOG		
1	4498	3400	30	2	1 L	10	2	501	7 L	10		
1	3400	0	60	1	1 L	10	1	501	7 L	10		

Run No.	Bore Hole Record			Casing Record				PETRO-LOG T.D.
No.	Bit	From	To	Size	Wgt.	From	To	CUSTOMER T.D.
1	12 1/4	Surf		8 3/8		Surf	455	4498
1	7 7/8	455	4503					4503

REMARKS

5" - 100'

GAMMA RAY

10	110
110	210

GUARD  
RESISTIVITY OHMS M<sup>2</sup>/M

NEUTRON

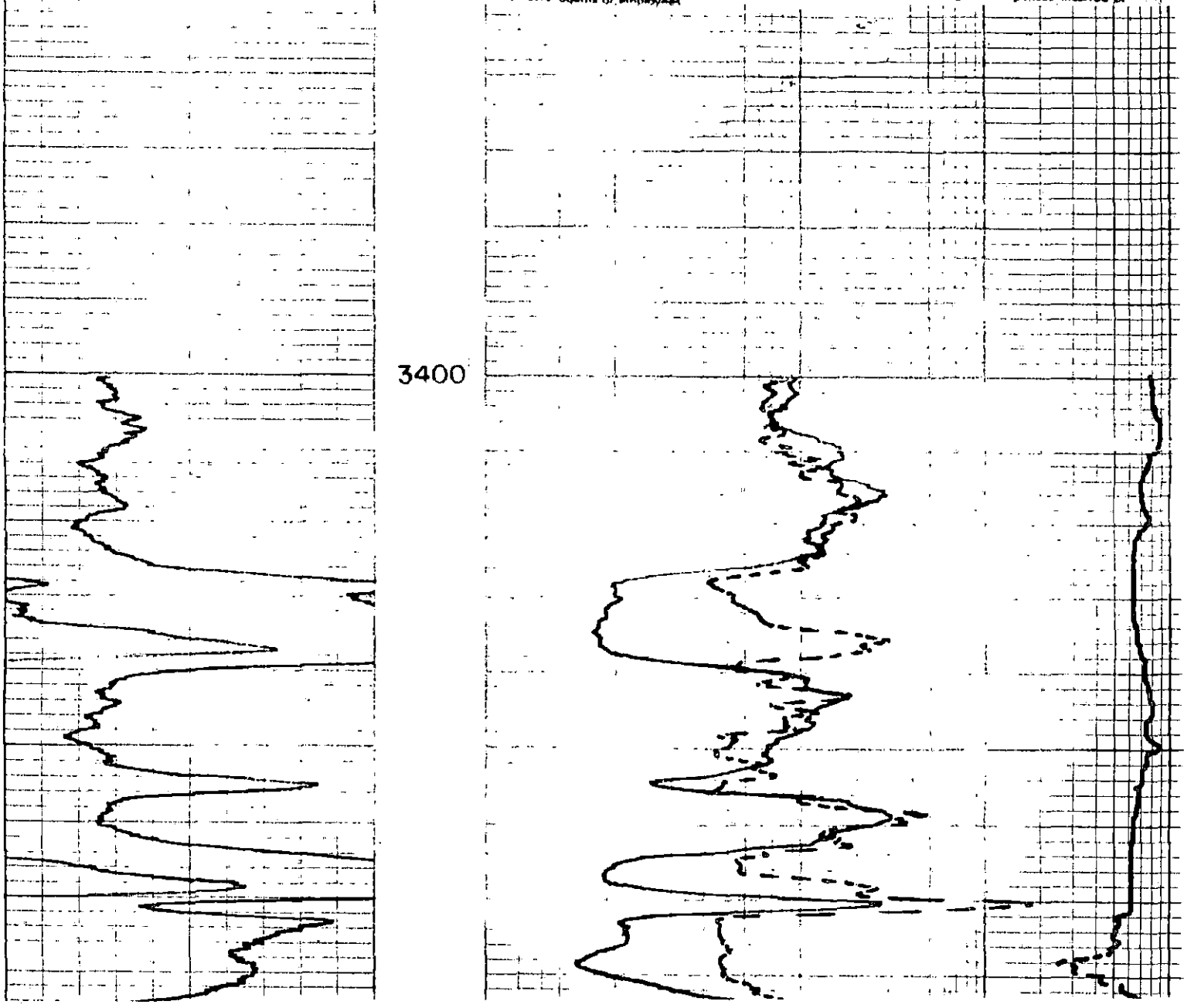
22.5

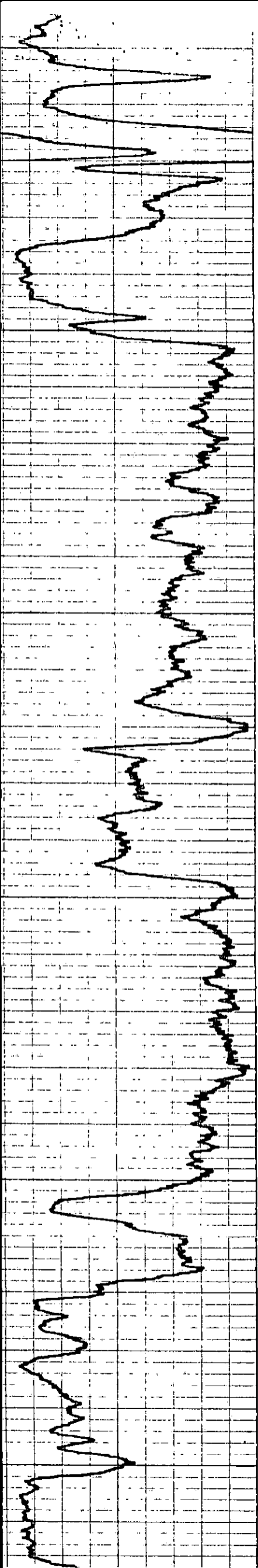
CALIPER  
AVERAGE DIAMETER INCHES

13" 14 13 12 11 10 9 8

All interpretations are opinions based on inferences from electrical or other measurements and we cannot, and do not guarantee the accuracy or correctness of any interpretations and we shall not except in the case of gross or willful negligence on our part, be liable or responsible for any loss, costs, damages or expenses incurred or sustained by anyone resulting from any interpretation made by one of our officers, agents or employees.

3400

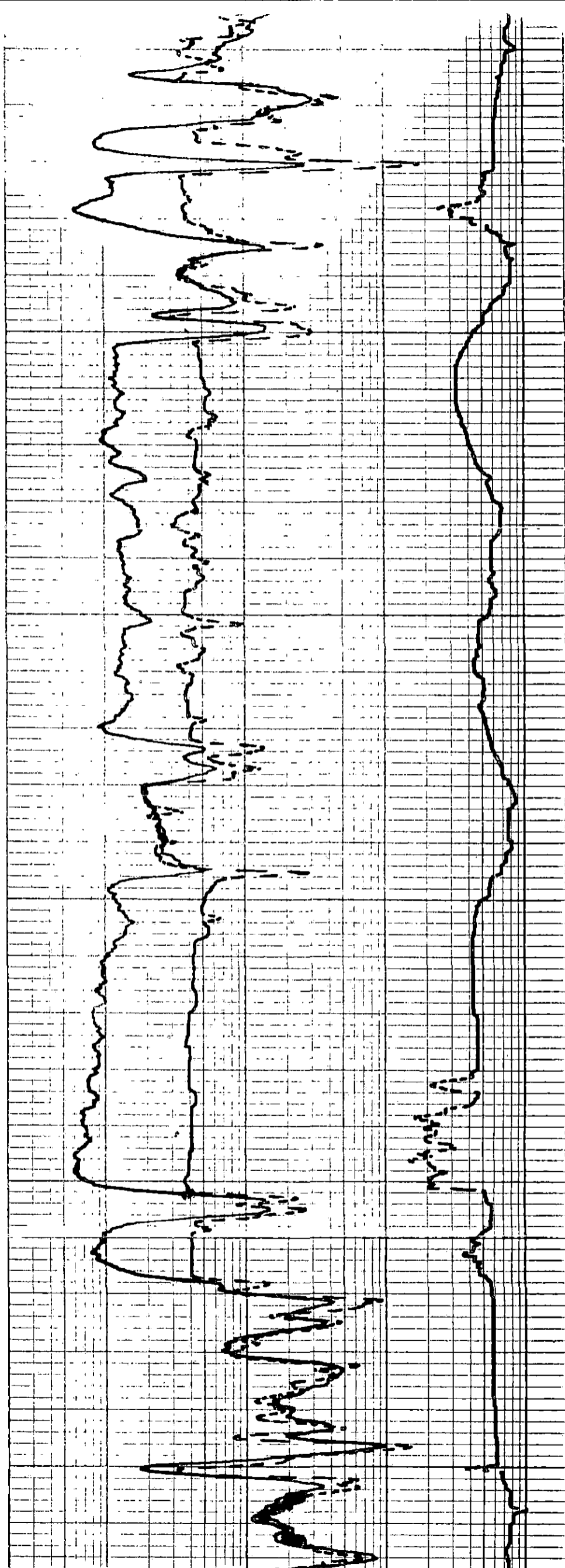


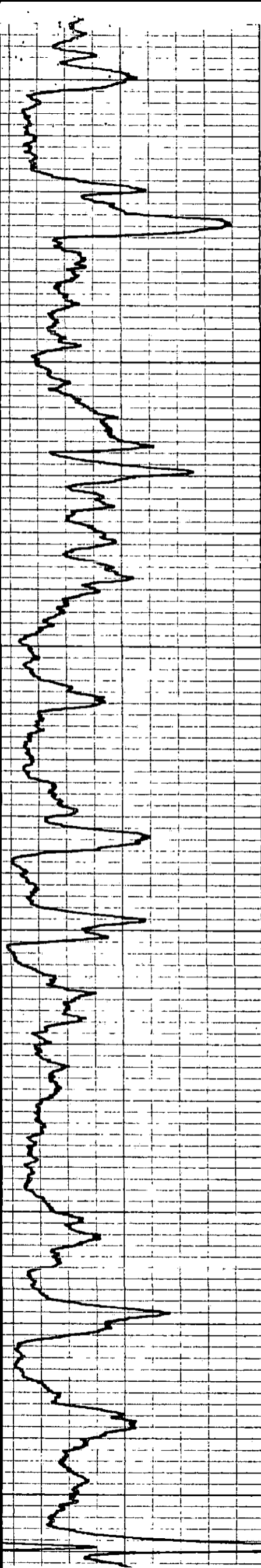


3500

3600

3700



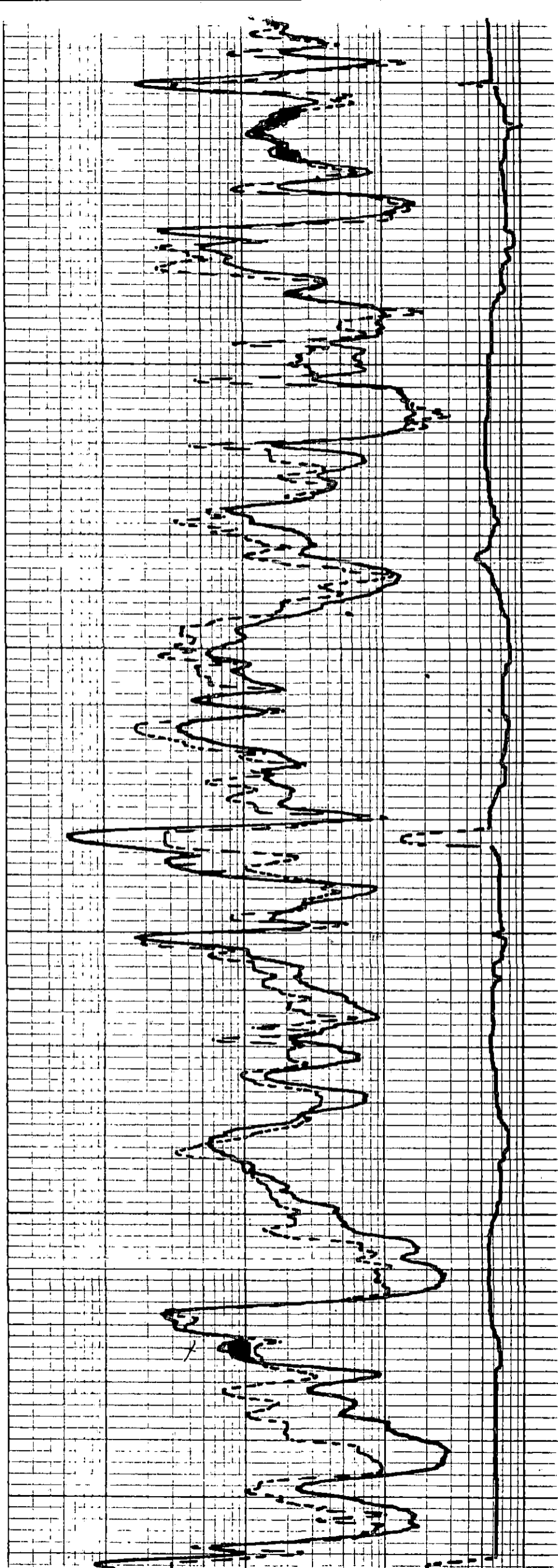


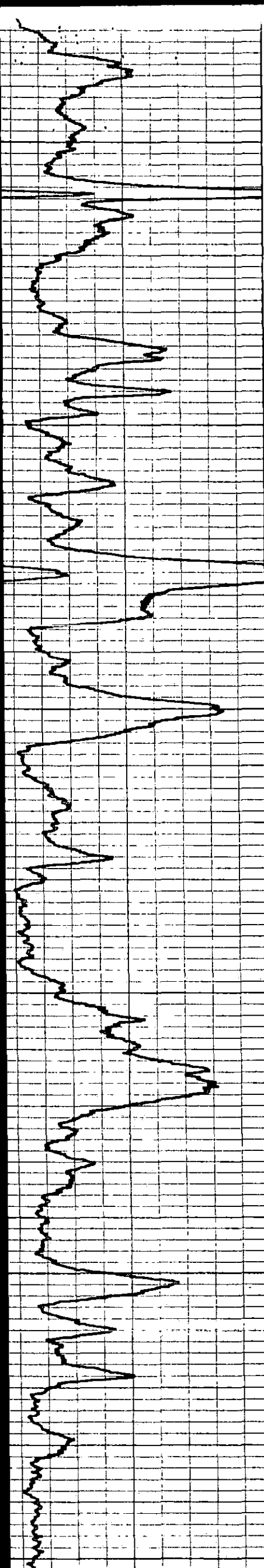
3700

+

3800

3900

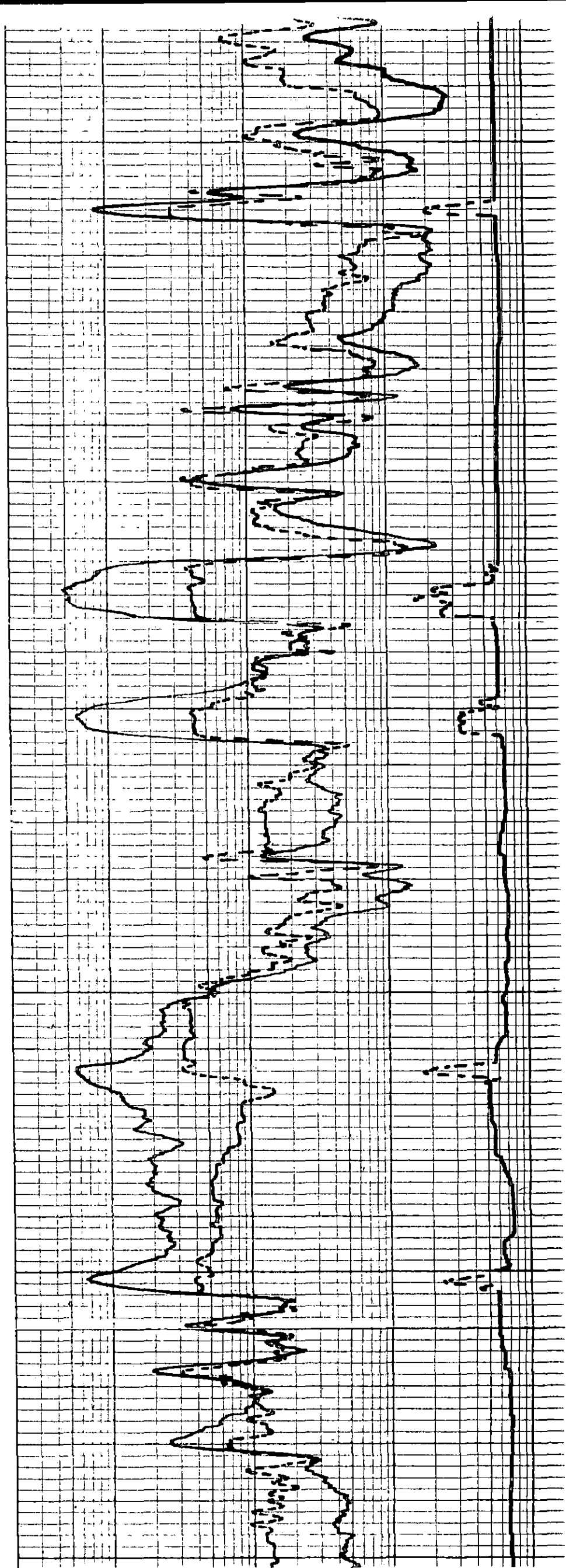


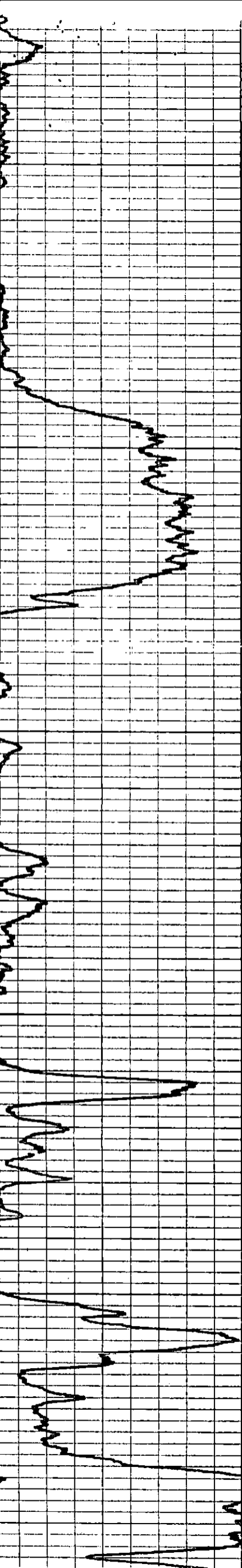


4000

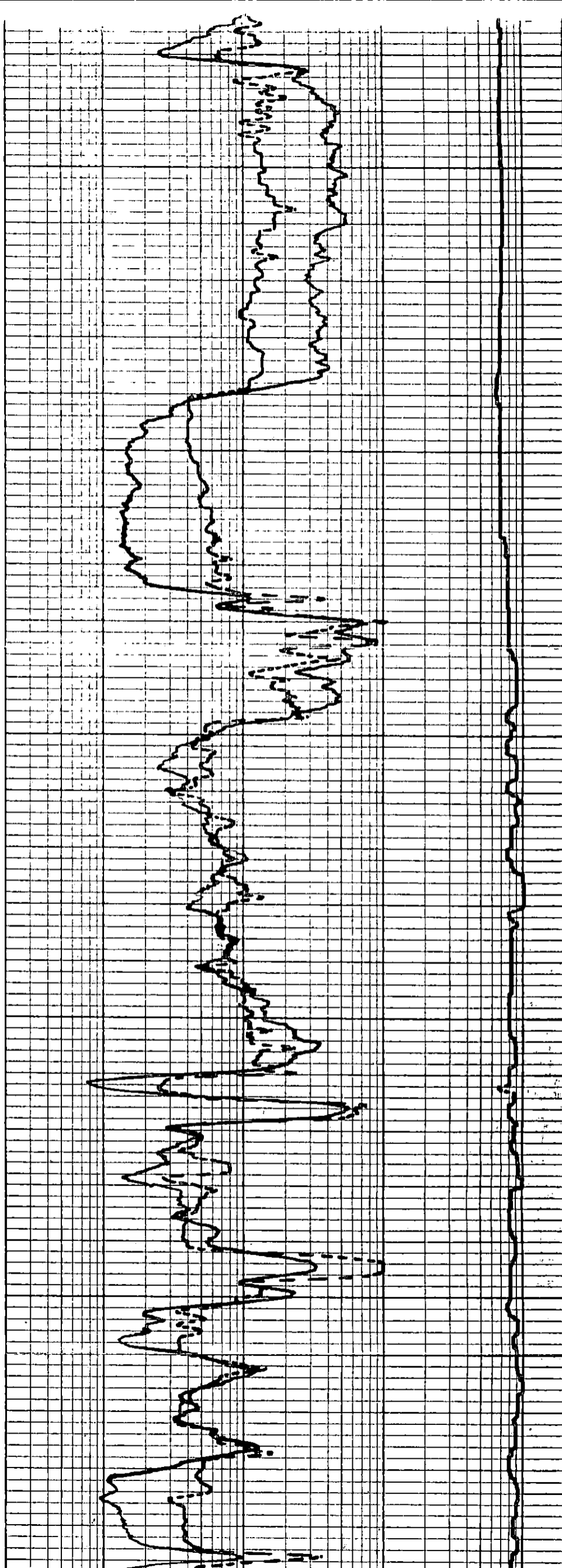
4100

4200



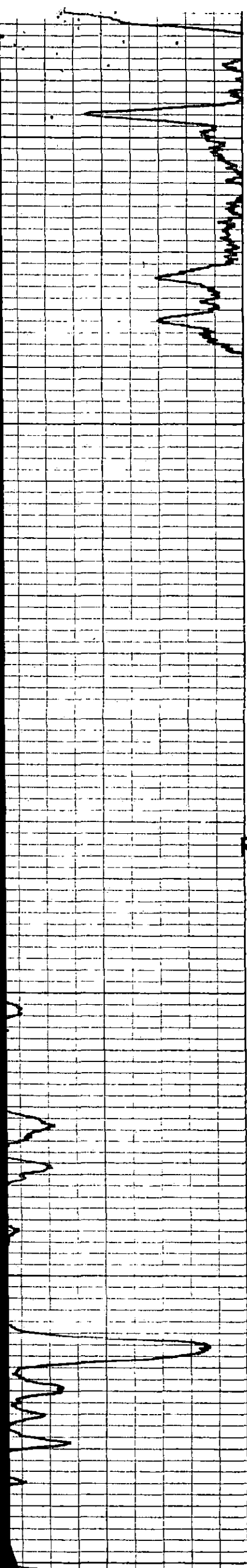


4200

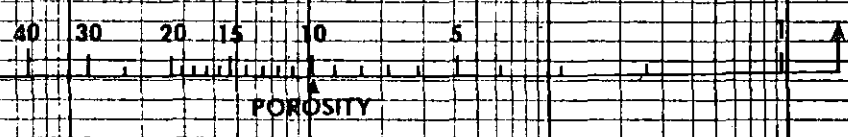
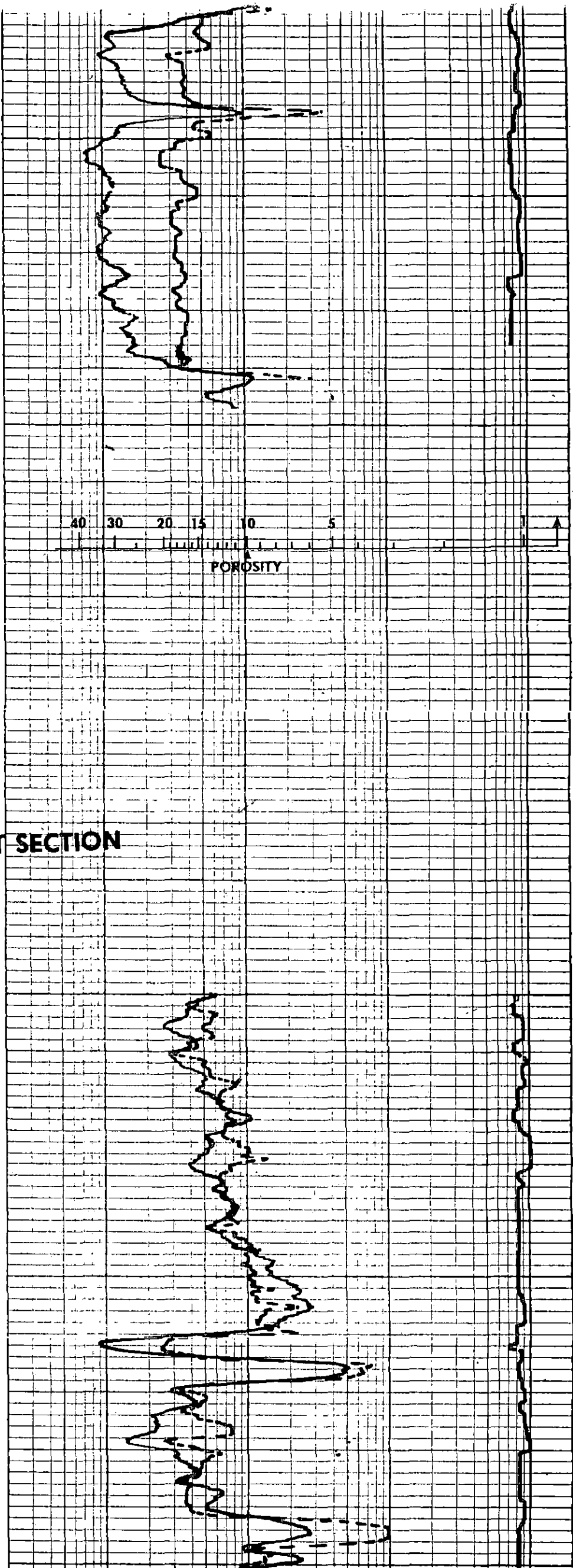


4300

4400



4500

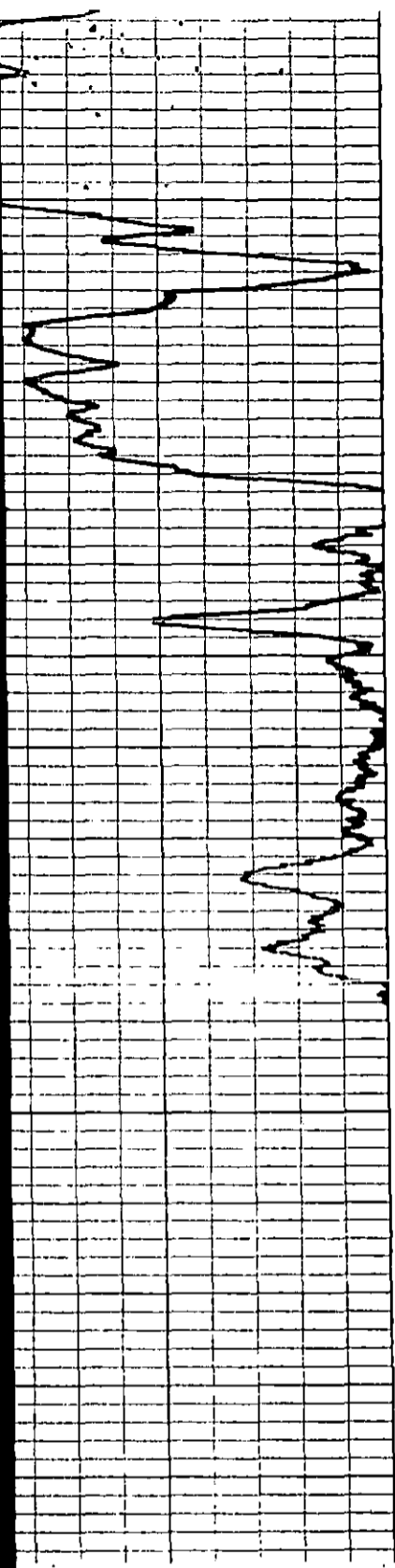


REPEAT SECTION

4300

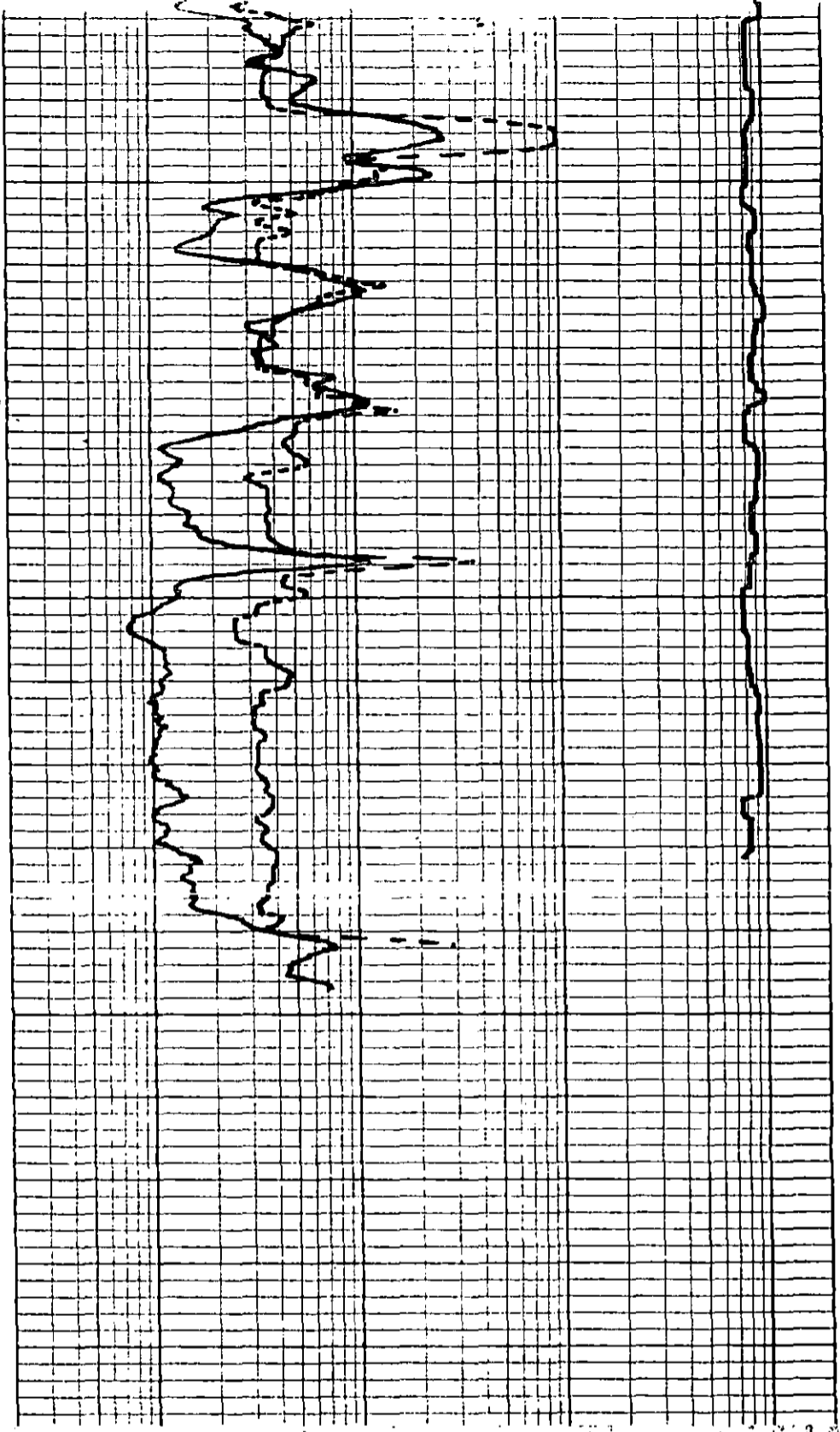
4400





4400

4500



110
210
<b>GAMMA RAY</b>

2	1	10	100	1000						
<b>GUARD</b> RESISTIVITY OHMS M <sup>2</sup> /M										
<b>NEUTRON</b>										
700				2250						
	15"	14	13	12	11	10	9	8	7	6
AVERAGE DIAMETER INCHES CALIPER										

5" - 100'

GAMMA RAY 4489

T. D. NEUTRON-GAMMA 4497

T. D. GUARD 4492

T. D. DRILLER 4503

T. D. PETRO-LOG 4498