

CONFIDENTIAL plugged 6/15/94

STATE CORPORATION COMMISSION OF KANSAS
OIL & GAS CONSERVATION DIVISION
WELL COMPLETION FORM
ACO-1 WELL HISTORY
DESCRIPTION OF WELL AND LEASE

API NO. 15- 119-20905-00-00
County Meade **ORIGINAL**
N/2 - NW - SE Sec. 7 Twp. 33S Rge. 30W ^E/_W

Operator: License # 30606

2310 Feet from S/N (circle one) Line of Section

Name: Murfin Drilling Co., Inc.

2100 Feet from E/W (circle one) Line of Section

Address: 250 N. Water, Suite 300

Footages Calculated from Nearest Outside Section Corner:
NE, SE NW or SW (circle one)

City/State/Zip Wichita, KS 67202

Lease Name Féiertag Well # 1-7

Purchaser: - N/A

Field Name Unknown

Operator Contact Person: Larry M. Jack

Producing Formation None

Phone () 267-3241

Elevation: Ground 2745 KB 2754

Contractor: Name: Murfin Drilling Co., Inc.

Total Depth 5960 PBDT

License: 30606

Amount of Surface Pipe Set and Cemented at 1528 Feet

Wellsite Geologist: Paul Godowic

Multiple Stage Cementing Collar Used? Yes No

Designate Type of Completion
 New Well Re-Entry Workover

If yes, show depth set Feet

Oil SWD SIGW Temp. Abd.
 Gas ENHR SIGW
 Dry Other (Core, WSW, Expl., Cathodic, etc)

If Alternate II completion, cement circulated from

feet depth to w/ sx cmt.

If Workover/Re-Entry: old well info as follows:

Drilling Fluid Management Plan D&A JH 11-2-94
(Data must be collected from the Reserve Pit)

Operator:

Chloride content 4500 ppm Fluid volume 2500 bbls

Well Name:

Dewatering method used evaporation

Comp. Date Old Total Depth

Location of fluid disposal if hauled offsite:

Deepening Re-perf. Conv. to Inj/SWD
 Plug Back PBDT
 Commingled Docket No.
 Dual Completion Docket No.
 Other (SWD or Inj?) Docket No.

Operator Name **RELEASED**

Lease Name License No.

5/28/94 6/15/94
Spud Date Date Reached TD Completion Date

Quarter Sec. Twp. S Rng. E/W
FROM CONFIDENTIAL CONFIDENTIAL
County Docket No.

INSTRUCTIONS: An original and two copies of this form shall be filed with the Kansas Corporation Commission, 200 Colorado Derby Building, Wichita, Kansas 67202, within 120 days of the spud date, recompletion, workover or conversion of a well. Rule 82-3-130, 82-3-106 and 82-3-107 apply. Information on side two of this form will be held confidential for a period of 12 months if requested in writing and submitted with the form (see rule 82-3-107 for confidentiality in excess of 12 months). One copy of all wireline logs and geologist well report shall be attached with this form. ALL CEMENTING TICKETS MUST BE ATTACHED. Submit CP-4 form with all plugged wells. Submit CP-111 form with all temporarily abandoned wells.

All requirements of the statutes, rules and regulations promulgated to regulate the oil and gas industry have been fully complied with and the statements herein are complete and correct to the best of my knowledge.

Signature By: Larry M. Jack

Title Larry M. Jack, Prod. Mgr. Date 6/23/94

Subscribed and sworn to before me this 23 day of June 19 94

Notary Public Kerran Redington
KERRAN REDINGTON
NOTARY PUBLIC
STATE OF KANSAS
Date Commission Expires 2/6/98
My Appl. Exp. 2/6/98

K.C.C. OFFICE USE ONLY
F Letter of Confidentiality Attached
C Wireline Log Received
C Geologist Report Received
Distribution KCC SWD/Rep
 KGS Plug Other
RECEIVED
KANSAS CORPORATION COMMISSION
JUN 24 1994
Wichita, Kansas

Operator Name Murfin Drilling Co., Inc. Lease Name Feiertag Well # 1-7
 Sec. 7 Twp. 33S Rge. 30W East West
 County Meade

INSTRUCTIONS: Show important tops and base of formations penetrated. Detail all cores. Report all drill stem tests giving interval tested, time tool open and closed, flowing and shut-in pressures, whether shut-in pressure reached static level, hydrostatic pressures, bottom hole temperature, fluid recovery, and flow rates if gas to surface during test. Attach extra sheet if more space is needed. Attach copy of log.

Drill Stem Tests Taken Yes No
 (Attach Additional Sheets.)
 Samples Sent to Geological Survey Yes No
 Cores Taken Yes No
 Electric Log Run Yes No
 (Submit Copy.)
 List All E.Logs Run:

See attached.

Log Formation (Top), Depth and Datum Sample
 Name Top Datum

See attached.

CASING RECORD <input type="checkbox"/> New <input type="checkbox"/> Used							
Report all strings set-conductor, surface, intermediate, production, etc.							
Purpose of String	Size Hole Drilled	Size Casing Set (In O.D.)	Weight Lbs./Ft.	Setting Depth	Type of Cement	# Sacks Used	Type and Percent Additives
Surface	12 1/4	8 5/8	24	1528	Common Lite	150 550	3% cc

ADDITIONAL CEMENTING/SQUEEZE RECORD				
Purpose:	Depth Top Bottom	Type of Cement	#Sacks Used	Type and Percent Additives
<input type="checkbox"/> Perforate				
<input type="checkbox"/> Protect Casing				
<input type="checkbox"/> Plug Back TD				
<input type="checkbox"/> Plug Off Zone				

Shots Per Foot	PERFORATION RECORD - Bridge Plugs Set/Type Specify Footage of Each Interval Perforated	Acid, Fracture, Shot, Cement Squeeze Record (Amount and Kind of Material Used)	Depth

TUBING RECORD Size Set At Packer At Liner Run Yes No

Date of First, Resumed Production, SWD or Inj. Producing Method Flowing Pumping Gas Lift Other (Explain)

Estimated Production Per 24 Hours Oil Bbls. Gas Mcf Water Bbls. Gas-Oil Ratio Gravity

Disposition of Gas: Vented Sold Used on Lease (If vented, submit ACO-18.) METHOD OF COMPLETION Open Hole Perf. Dually Comp. Commingled Other (Specify) _____ Production Interval _____

Murfin Drilling Company, Inc.
 Suite 300
 250 North Water Street
 Wichita, Kansas 67202

RELEASED
 CONFIDENTIAL
 JUL 26 1995

REC
 JUN 23

Gentlemen:

FROM CONFIDENTIAL CONFIDENTIAL

I have witnessed the drilling on the No. 1-7 Feiertag from 2520' to a total depth of 5960' in Ste. Genevieve (Mississippian) rocks. A sample log with lithological descriptions, two foot drilling time, gas detector readings and other pertinent data was plotted on a 5"=100' scale from 2400' to TD.

Samples on this test are being sent to the Kansas Geological Society Sample Library, 4150 Monroe Street, Wichita, Kansas 67209.

Geological tops corrected to the electrical survey and correlated with the Shamrock Oil & Gas Corporation - Collingwood No. A-1 (1390' FN&EL of section 7-T33S-R30W, Meade County, Kansas) a 1955 Chester test about 1/2 mile north-east, and the Source Petroleum - Langhofer No. 1 (NE SW of section 18-T33S-R30W, Meade County, Kansas) a 1986 Spergen (Mississippian) dry hole about one mile south, are as follows:

Formation (Elevation-Datum)	Murfin/Canyon No. 1-7 Feiertag 2753 KB	Shamrock No. A-1 Collingwood 2756 KB	Source No. 1 Langhofer 2743 KB
Base of Stone Corral	1604 +1149	Cased Off	1572 +1171
Wellington	2124 +629	Cased Off	2091 +652
Wolfcamp	2609 +144	2608 +108	2636 +107
Krider	2681 +72	2682 +74	2671 +72
Winfield	2736 +17	2736 +20	2722 +21
Council Grove	2995 -242	2997 -241	2973 -230
Base of Heebner	4353 -1600	4366 -1610	4350 -1607
Toronto	4368 -1615	4379 -1623	4363 -1617
Lansing	4480 -1727	4494 -1738	4480 -1737
Iola	4757 -2004	4772 -2016	4756 -2013
Base of Stark Shale	4963 -2210	4967 -2211	4959 -2216
Swope	4968 -2215	4973 -2217	4964 -2221
Hertha	5059 -2306	5060 -2304	5063 -2320
Marmaton	5111 -2358	5117 -2361	5109 -2366
Cherokee Shale	5268 -2515	5273 -2517	5265 -2522
Atoka	5452 -2699	5455 -2699	5457 -2714
Morrow	5612 -2859	5610 -2854	5617 -2874
Chester	5674 -2921	5660 -2904	5674 -2931
*Ste. Genevieve	5930 -3177	NDE	5914 -3171
St. Louis	NDE	NDE	5996 -3253
Spergen	NDE	NDE	6103 -3360
T.D. - E.S.	5960 -3207	5704 -2948	6130 -3387
T.D. - Driller	5960 -3207	5703 -2947	6130 -3380

*This correlates with industry top, but Ste. Genevieve lithology was high as 5896' (-3143)

RECEIVED
 STATE COMMISSION
 JUN 24 1994
 CONSERVATION DIVISION
 Wichita, Kansas

TRILOBITE TESTING, L.L.C.

P.O. Box 362 • Hays, Kansas 67601

CONFIDENTIAL

ORIGINAL

Drill-Stem Test Data

Well Name FEIERTAG #1-7 Test No. 1 Date 6/1/94
 Company MURFIN DRILLING CO INC/CANYON ENERGY I Zone _____
 Address 250 N WATER SWT #300 WICHITA KS 67202 Elevation 2754
 Co. Rep./Geo. PAUL GODOWIC Cont. MURFIN DRLG RIG #21 Est. Ft. of Pay _____
 Location: Sec. 7 Twp. 33S Rge. 30W Co. MEADE State KS

Interval Tested	<u>2649-2691</u>	Drill Pipe Size	<u>4.5" XH</u>
Anchor Length	<u>42</u>	Wt. Pipe I.D. - 2.7 Ft. Run	_____
Top Packer Depth	<u>2644</u>	Drill Collar - 2.25 Ft. Run	<u>525</u>
Bottom Packer Depth	<u>2649</u>	Mud Wt.	<u>8.8</u> lb/Gal.
Total Depth	<u>2691</u>	Viscosity	<u>44</u> Filtrate <u>12.8</u>

Tool Open @ 6:25 AM Initial Blow 1/2" BLOW - BUILT TO 6.5"
 ISI: NO BLOW BACK
 Final Blow 1/2" BLOW - BUILT TO 4"
 FSI: NO BLOW BACK

Recovery - Total Feet 30 Flush Tool? NO

Rec. <u>30</u>	Feet of	<u>DRILLING MUD</u>	<u>RELEASED</u>	<u>ACC</u>
Rec. _____	Feet of	_____	_____	_____
Rec. _____	Feet of	_____	<u>JUL 26 1995</u>	<u>JUN 23</u>
Rec. _____	Feet of	_____	_____	_____
Rec. _____	Feet of	_____	<u>FROM CONFIDENTIAL</u>	<u>CONFIDENTIAL</u>

BHT 91 °F Gravity _____ °API @ _____ °F Corrected Gravity _____ °API
 RW _____ @ _____ °F Chlorides _____ ppm Recovery Chlorides 4500 ppm System

(A) Initial Hydrostatic Mud 1260.3 PSI AK1 Recorder No. 5495 Range 4200

(B) First Initial Flow Pressure 25.1 PSI @ (depth) 2652 w / Clock No. 25813

(C) First Final Flow Pressure 25.1 PSI AK1 Recorder No. 11038 Range 5075

(D) Initial Shut-in Pressure 217.1 PSI @ (depth) 2688 w / Clock No. 25814

(E) Second Initial Flow Pressure 44.6 PSI AK1 Recorder No. _____ Range _____

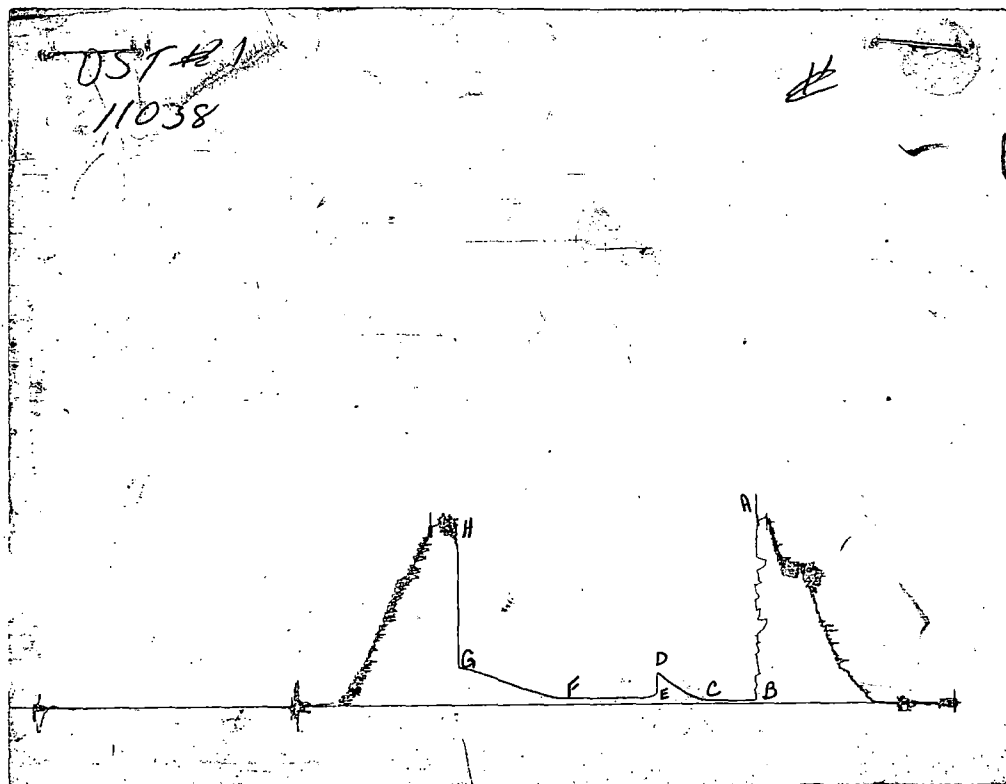
(F) Second Final Flow Pressure 44.6 PSI @ (depth) _____ w / Clock No. _____

(G) Final Shut-in Pressure 266.4 PSI Initial Opening 30 Final Flow 60

(H) Final Hydrostatic Mud 1242.7 PSI Initial Shut-in 45 Final Shut-in 90

Our Representative TOM HORACEK

CHART PAGE



ORIGINAL

This is an actual photograph of recorder chart #11038

RELEASED

JUL 26 1995

FIELD
READING

OFFICE
READING

FROM CONFIDENTIAL

	FIELD READING	OFFICE READING
(A) INITIAL HYDROSTATIC MUD	1260	1260.3
(B) FIRST INITIAL FLOW PRESSURE	27	25.1
(C) FIRST FINAL FLOW PRESSURE	27	25.1
(D) INITIAL CLOSED-IN PRESSURE	217	217.1
(E) SECOND INITIAL FLOW PRESSURE	41	44.6
(F) SECOND FINAL FLOW PRESSURE	41	44.6
(G) FINAL CLOSED-IN PRESSURE	257	266.4
(H) FINAL HYDROSTATIC MUD	1222	1242.7

NCC

JUN 23

CONFIDENTIAL

RECEIVED

STATE CONSERVATION COMMISSION

JUN 24 1994

CONSERVATION DIVISION
Wichita, Kansas

FLUID SAMPLER DATA

ORIGINAL

Ticket No.: 7012 Date: 6/1/94
 Company: MURFIN DRILLING CO INC/CANYON ENERGY INC
 Lease: FEIERTAG #1-7 Test No.: 1
 County: MEADE Sec.: 7 Twp.: 33S Rng.: 30W

SAMPLER RECOVERY

Gas
 Oil
 Mud 4000
 Water
 Other
 Pressure 40
 TOTAL 4000

SAMPLER ANALYSIS

Resistivity ohms@ F
 Chlorides ppm.
 Gravity corrected @60F

PIT MUD ANALYSIS

Chlorides 4500
 Resistivity ohms@ F
 Viscosity 44
 Mud Wt. 8.8
 Filtrate 12.8
 Other

PIPE RECOVERY

TOP
 Resistivity ohms@ F
 Chlorides ppm
 MIDDLE
 Resistivity ohms@ F
 Chlorides ppm
 BOTTOM
 Resistivity ohms@ F
 Chlorides ppm

KCC
 JUN 23
 CONFIDENTIAL

ORIGINAL

TRILOBITE TESTING L.L.C.

P.O. Box 362 - Hays, Kansas 67601

FLUID SAMPLER DATA

Ticket No. 7012 Date 6-1-94
 Company Name MDC Canyon Energy Inc.
 Lease Feiertag #1-7 Test No. #1
 County Meade KS. Sec. 7 Twp. 33 Rng. 30

SAMPLER RECOVERY

Gas _____ ML
 Oil _____ ML
 Mud 4000 ML
 Water _____ ML
 Other _____ ML
 Pressure 40 PSI
 Total 4000 ML

PIT MUD ANALYSIS

Chlorides _____ ppm.
 Resistivity _____ ohms @ _____ F
 Viscosity 44
 Mud Weight 8.8
 Filtrate 12.8 NCC
 Other JUN 23

CONFIDENTIAL

SAMPLER ANALYSIS

Resistivity _____ ohms @ _____ F
 Chlorides _____ ppm.
 Gravity _____ corrected @ 60 F

PIPE RECOVERY

TOP
 Resistivity _____ ohms @ _____ F
 Chlorides _____ ppm.

MIDDLE
 Resistivity _____ ohms @ _____ F
 Chlorides _____ ppm.

BOTTOM
 Resistivity _____ ohms @ _____ F
 Chlorides _____ ppm.

RECEIVED
 STATE COMMISSION
JUN 24 1994
 CONSERVATION DIVISION
 Wichita, Kansas

TRILOBITE TESTING, L.L.C.

P.O. Box 362 • Hays, Kansas 67601

Drill-Stem Test Data

CONFIDENTIAL

ORIGINAL

Well Name FEIERTAG #1-7 Test No. 2 Date 6/1/94
 Company MURFIN DRILLING CO INC/CANYON ENERGY Zone WINFIELD
 Address 250 N WATER SWT #300 WICHITA KS 67202 Elevation 2754
 Co. Rep./Geo. PAUL GODOWIC Cont. MURFIN DRLG RIG #21 Est. Ft. of Pay _____
 Location: Sec. 7 Twp. 33S Rge. 30W Co. MEADE State KS

Interval Tested 2740-2750 Drill Pipe Size 4.5" XH
 Anchor Length 10 Wt. Pipe I.D. - 2.7 Ft. Run _____
 Top Packer Depth 2735 Drill Collar - 2.25 Ft. Run 557
 Bottom Packer Depth 2740 Mud Wt. 8.8 lb/Gal.
 Total Depth 2750 Viscosity 45 Filtrate 13.6

Tool Open @ 10:03 PM ^{Initial} Blow VERY WEAK SURFACE BLOW THROUGHOUT

Final Blow VERY WEAK SURFACE BLOW THROUGHOUT

Recovery - Total Feet 65 Flush Tool? NO

Rec. 65 Feet of MUDDY WATER **RELEASED**
 Rec. _____ Feet of _____ **KCC**
 Rec. _____ Feet of _____ **JUL 26 1995**
 Rec. _____ Feet of _____ **JUN 23**
 Rec. _____ Feet of _____ **FROM CONFIDENTIAL** **CONFIDENTIAL**

BHT 94 °F Gravity _____ °API @ _____ °F Corrected Gravity _____ °API
 RW 0.37 @ 71.4 °F Chlorides 19000 ppm Recovery Chlorides 4000 ppm System

(A) Initial Hydrostatic Mud 1341.1 PSI AK1 Recorder No. 22150 Range 3050

(B) First Initial Flow Pressure 37.1 PSI @ (depth) 2742 w / Clock No. 25109

(C) First Final Flow Pressure 31.8 PSI AK1 Recorder No. 24174 Range 3925

(D) Initial Shut-in Pressure 534.3 PSI @ (depth) 2747 w / Clock No. 23839

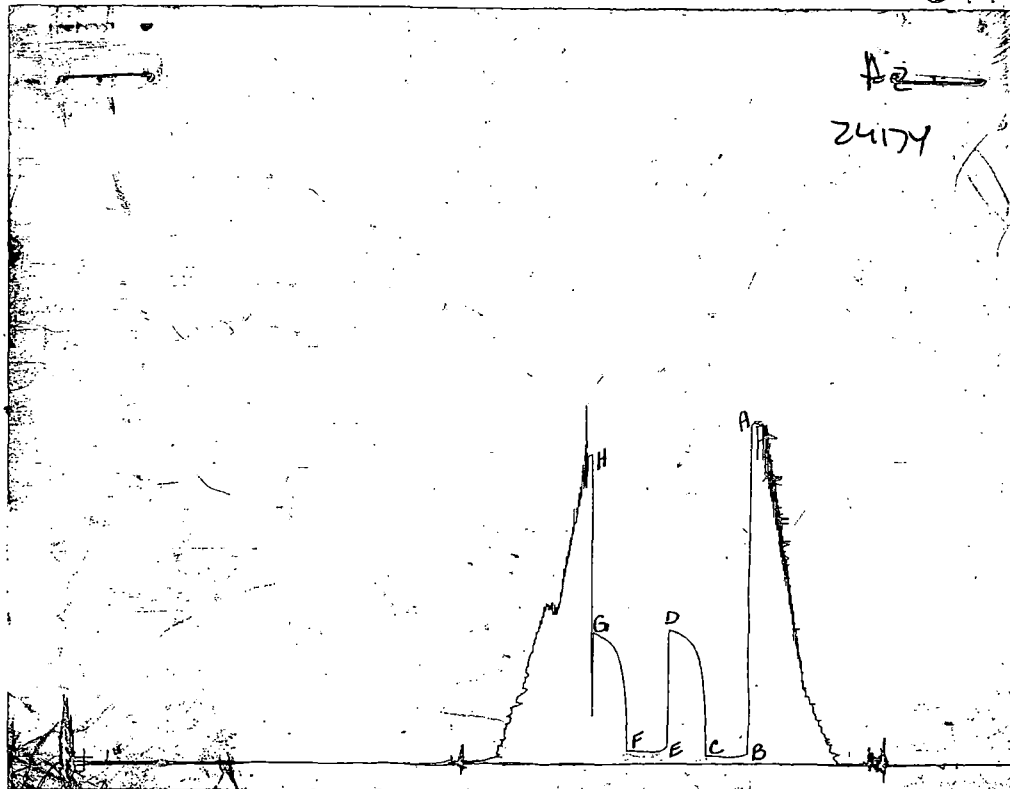
(E) Second Initial Flow Pressure 66.7 PSI AK1 Recorder No. _____ Range _____

(F) Second Final Flow Pressure 50.3 PSI @ (depth) _____ w / Clock No. _____

(G) Final Shut-in Pressure 522.1 PSI Initial Opening 30 Final Flow 30

(H) Final Hydrostatic Mud 1226.4 PSI Initial Shut-in 30 Final Shut-in 30

Our Representative PAUL SIMPSON



This is an actual photograph of recorder chart

#24174

KCC

JUN 23

CONFIDENTIAL

	FIELD READING	OFFICE READING
(A) INITIAL HYDROSTATIC MUD	1349	1341.1
(B) FIRST INITIAL FLOW PRESSURE	23	37.1
(C) FIRST FINAL FLOW PRESSURE	30	31.8
(D) INITIAL CLOSED-IN PRESSURE	530	534.3
(E) SECOND INITIAL FLOW PRESSURE	37	66.7
(F) SECOND FINAL FLOW PRESSURE	37	50.3
(G) FINAL CLOSED-IN PRESSURE	522	522.1
(H) FINAL HYDROSTATIC MUD	1228	1226.4

FLUID SAMPLER DATA

ORIGINAL

Ticket No.: 6599 Date: 6/1/94
 Company: MURFIN DRILLING CO INC/CANYON ENERGY
 Lease: FEIERTAG #1-7 Test No.: 2
 County: MEADE Sec.: 7 Twp.: 33S Rng.: 30W

SAMPLER RECOVERY

Gas
 Oil
 Mud 1800
 Water 2200
 Other
 Pressure 60
 TOTAL 4000

PIT MUD ANALYSIS

Chlorides 4000
 Resistivity ohms@ F
 Viscosity 45
 Mud Wt. 8.8
 Filtrate 13.6
 Other

KCC
 JUN 23
 CONFIDENTIAL

SAMPLER ANALYSIS

Resistivity 0.19 ohms@ 70 F
 Chlorides 38000 ppm.
 Gravity corrected @60F

PIPE RECOVERY

TOP
 Resistivity ohms@ F
 Chlorides ppm

MIDDLE

Resistivity ohms@ F
 Chlorides ppm

BOTTOM

Resistivity 0.37 ohms@ 71.4 F
 Chlorides 19000 ppm

TRILOBITE TESTING COMPANY

P.O. Box 362 - Hays, Kansas 67601

ORIGINAL

FLUID SAMPLER DATA

Ticket No. 6599 Date 6-1-94
Company Name Murphy Drilling / Canyon Energy
Lease Feiertag Test No. 2
County Meade Sec. 7 Twp. 33s Rng. 30w

SAMPLER RECOVERY

Gas _____ ML
Oil _____ ML
Mud 1800 ML
Water 2200 ML
Other _____ ML
Pressure 60 PSI
Total 4000 ML

PIT MUD ANALYSIS

Chlorides 4000 ppm.
Resistivity _____ ohms @ _____ F
Viscosity 45
Mud Weight 8.8
Filtrate 13.6
Other _____

KCC

JUN 23

~~CONFIDENTIAL~~

SAMPLER ANALYSIS

Resistivity .19 ohms @ 70 F
Chlorides 38,000 ppm.
Gravity _____ corrected @ 60 F

PIPE RECOVERY

TOP
Resistivity _____ ohms @ _____ F
Chlorides _____ ppm.
MIDDLE
Resistivity _____ ohms @ _____ F
Chlorides _____ ppm.
BOTTOM
Resistivity .37 ohms @ 71.4 F
Chlorides 19,000 ppm.

ORIGINAL

Test Ticket CONFIDENTIAL No. 6599

Well Name & No. 1-7 Feiertag Test No. 2 Date 6-1-94
 Company Murfin Drilling Co, Inc / Canyon Energy Zone Tested Winfield
 Address 250 N Water #300 Wichita KS 67202 Elevation 2754
 Co. Rep./Geo. Paul Godowic Cont. Murfin #21 Est. Ft. of Pay _____
 Location: Sec. 7 Twp. 33s Rge. 30w Co. Meade State Ks
 No. of Copies _____ Distribution Sheet _____ Yes _____ No _____ Turnkey _____ Yes _____ No _____ Evaluation _____

Interval Tested 2740-2750 Drill Pipe Size 4 1/2 YH
 Anchor Length 10 Top Choke — 1" _____ Bottom Choke — 3/4" _____
 Top Packer Depth 2735 Hole Size — 7 7/8" _____ Rubber Size — 6 3/4" _____
 Bottom Packer Depth 2740 Wt. Pipe I.D. — 2.7 Ft. Run _____
 Total Depth 2750 Drill Collar — 2.25 Ft. Run 557
 Mud Wt. 8.8 lb/gal. Viscosity 45 Filtrate 13.6
 Tool Open @ 10:05 PM Initial Blow 1/ weak surface blow through tool NOC
 Final Blow 1/ weak surface blow through out JUN 2 3

CONFIDENTIAL

Recovery — Total Feet	Feet of Gas In Pipe	Flush Tool?
Rec. <u>65</u> Feet Of <u>MW</u>	%gas _____ %oil _____ %water <u>70</u> %mud <u>30</u>	
Rec. _____ Feet Of _____	%gas _____ %oil _____ %water _____ %mud _____	
Rec. _____ Feet Of _____	%gas _____ %oil _____ %water _____ %mud _____	
Rec. _____ Feet Of _____	%gas _____ %oil _____ %water _____ %mud _____	
Rec. _____ Feet Of _____	%gas _____ %oil _____ %water _____ %mud _____	

BHT 94 °F Gravity _____ °API @ _____ °F Corrected Gravity _____ °API
 RW 37 @ 21.4 °F Chlorides 15,000 ppm Recovery Chlorides 400 ppm System

(A) Initial Hydrostatic Mud 1349 PSI AK1 Recorder No. 22150 Range 3050
 (B) First Initial Flow Pressure 23 PSI @ (depth) 2742 w/Clock No. 25109
 (C) First Final Flow Pressure 30 PSI AK1 Recorder No. 24174 Range 3925
 (D) Initial Shut-In Pressure 530 PSI @ (depth) 2747 w/Clock No. 23839
 (E) Second Initial Flow Pressure 37 PSI AK1 Recorder No. _____ Range _____
 (F) Second Final Flow Pressure 37 PSI @ (depth) _____ w/Clock No. _____
 (G) Final Shut-In Pressure 522 PSI Initial Opening 30 Test _____
 (H) Final Hydrostatic Mud 1228 PSI Initial Shut-In 30 Jars X _____

TRILOBITE TESTING L.L.C. SHALL NOT BE LIABLE FOR DAMAGE OF ANY KIND OF THE PROPERTY OR PERSONNEL OF THE ONE FOR WHOM A TEST IS MADE, OR FOR ANY LOSS SUFFERED OR SUSTAINED, DIRECTLY OR INDIRECTLY, THROUGH THE USE OF ITS EQUIPMENT, OR ITS STATEMENTS OR OPINION CONCERNING THE RESULTS OF ANY TEST. TOOLS LOST OR DAMAGED IN THE HOLE SHALL BE PAID FOR AT COST BY THE PARTY FOR WHOM THE TEST IS MADE.

Approved By Paul Godowic
 Our Representative Paul Simpson

Final Flow 30 Safety Joint X 50.00
 Final Shut-In 30 Straddle _____
 Circ. Sub _____
 Sampler X 200.00
 Extra Packer _____
 Other _____
 TOTAL PRICE \$ 1050.00

TRILOBITE TESTING, L.L.C.

P.O. Box 362 • Hays, Kansas 67601

Drill-Stem Test Data

CONFIDENTIAL

ORIGINAL

Well Name FEIERTAG #1-7 Test No. 3 Date 6/3/94
 Company MURFIN DRILLING CO INC/CANYON ENERGY Zone COUNCIL GROV
 Address 250 N WATER SWT #300 WICHITA KS 67202 Elevation 2754
 Co. Rep./Geo. PAUL GODOWIC Cont. MURFIN DRLG RIG #21 Est. Ft. of Pay _____
 Location: Sec. 7 Twp. 33S Rge. 30W Co. MEADE State KS

Interval Tested	<u>3230-3257</u>	Drill Pipe Size	<u>4.5" XH</u>
Anchor Length	<u>27</u>	Wt. Pipe I.D. - 2.7 Ft. Run	_____
Top Packer Depth	<u>3225</u>	Drill Collar - 2.25 Ft. Run	<u>556</u>
Bottom Packer Depth	<u>3230</u>	Mud Wt.	<u>8.8</u> lb/Gal.
Total Depth	<u>3257</u>	Viscosity	<u>52</u>
		Filtrate	<u>14.8</u>

Tool Open @ 3:30AM Initial Blow FAIR BLOW BUILT TO BOTTOM IN 20 MINUTES
ISI: BLEED OFF BLOW FOR 10 MINUTES - NO BLOW BACK
 Final Blow VERY WEAK BLOW BUILT TO BOTTOM IN 28 MINUTES
FSI: BLEED OFF BLOW NO BLOW BACK

Recovery - Total Feet 660 Flush Tool? NO

Rec. <u>60</u>	Feet of	<u>MUDDY WATER 60%WATER/40%MUD</u>
Rec. <u>600</u>	Feet of	<u>SALT WATER</u>
Rec. _____	Feet of	<u>RELEASED</u>
Rec. _____	Feet of	<u>JUL 26 1995</u>
Rec. _____	Feet of	<u>JUN 23</u>

FROM CONFIDENTIAL

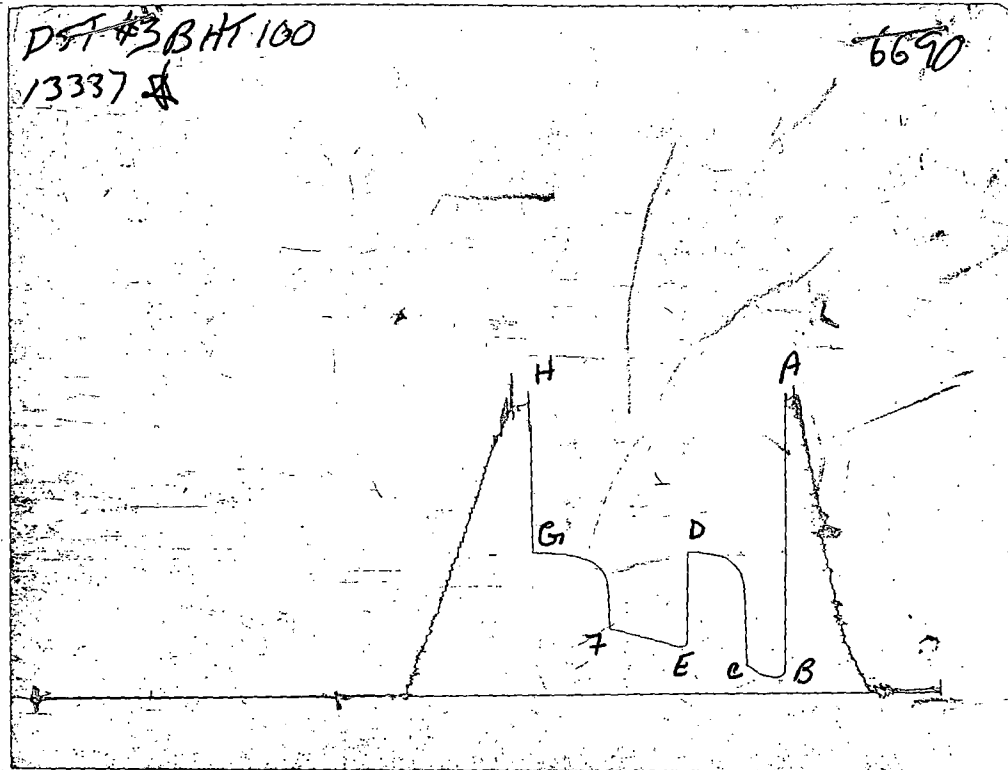
CONFIDENTIAL

BHT 100 °F Gravity _____ °API @ _____ °F Corrected Gravity _____ °API
 RW 0.108 @ 64 °F Chlorides 170000 ppm Recovery Chlorides 6000 ppm System

(A) Initial Hydrostatic Mud	<u>1551.8</u> PSI	AK1 Recorder No. <u>13337</u>	Range <u>3975</u>
(B) First Initial Flow Pressure	<u>79.1</u> PSI	@ (depth) <u>3233</u>	w / Clock No. <u>26191</u>
(C) First Final Flow Pressure	<u>143.3</u> PSI	AK1 Recorder No. <u>10323</u>	Range <u>4050</u>
(D) Initial Shut-in Pressure	<u>733.8</u> PSI	@ (depth) <u>3254</u>	w / Clock No. <u>14389</u>
(E) Second Initial Flow Pressure	<u>239.1</u> PSI	AK1 Recorder No. _____	Range _____
(F) Second Final Flow Pressure	<u>338.9</u> PSI	@ (depth) _____	w / Clock No. _____
(G) Final Shut-in Pressure	<u>736.7</u> PSI	Initial Opening <u>30</u>	Final Flow <u>60</u>
(H) Final Hydrostatic Mud	<u>1518.7</u> PSI	Initial Shut-in <u>45</u>	Final Shut-in <u>60</u>

Our Representative ROBERT COLLINS

CHART PAGE



ORIGINAL

This is an actual photograph of recorder chart

KCC

JUN 23

CONFIDENTIAL

	FIELD READING	OFFICE READING
(A) INITIAL HYDROSTATIC MUD	1533	1551.8
(B) FIRST INITIAL FLOW PRESSURE	69	79.1
(C) FIRST FINAL FLOW PRESSURE	148	143.3
(D) INITIAL CLOSED-IN PRESSURE	729	733.8
(E) SECOND INITIAL FLOW PRESSURE	237	239.1
(F) SECOND FINAL FLOW PRESSURE	345	338.9
(G) FINAL CLOSED-IN PRESSURE	729	736.7
(H) FINAL HYDROSTATIC MUD	1513	1518.7

FLUID SAMPLER DATA

ORIGINAL

Ticket No.: 6690 Date: 6/3/94
 Company: MURFIN DRILLING CO INC/CANYON ENERGY
 Lease: FEIERTAG #1-7 Test No.: 3
 County: MEADE Sec.: 7 Twp.: 33S Rng.: 30W

SAMPLER RECOVERY

Gas
 Oil
 Mud
 Water 4000
 Other
 Pressure 300
 TOTAL 4000

PIT MUD ANALYSIS

Chlorides 6000
 Resistivity ohms@ F
 Viscosity 52
 Mud Wt. 8.8
 Filtrate 14.8
 Other

KCC
 JUN 23
 CONFIDENTIAL

SAMPLER ANALYSIS

Resistivity 0.108 ohms@ 64 F
 Chlorides 170000 ppm.
 Gravity corrected @60F

PIPE RECOVERY

TOP

Resistivity 0.138 ohms@ 63 F
 Chlorides 80000 ppm

MIDDLE

Resistivity 0.1 ohms@ 64 F
 Chlorides 150000 ppm

BOTTOM

Resistivity 0.108 ohms@ 64 F
 Chlorides 170000 ppm

1638

TRILOBITE TESTING L.L.C.

P.O. Box 362 - Hays, Kansas 67601

ORIGINAL

FLUID SAMPLER DATA

Ticket No. 6690 Date 6-3-94
 Company Name Martin
 Lease Ferretas #1-7 Test No. 3
 County Meads KS Sec. 7 Twp. 33 Rng. 30

SAMPLER RECOVERY

Gas _____ ML
 Oil _____ ML
 Mud _____ ML
 Water 4000 ML
 Other _____ ML
 Pressure 300 PSI
 Total 4000 ML

PIT MUD ANALYSIS

Chlorides 6.000 ppm.
 Resistivity _____ ohms @ _____ F
 Viscosity 52
 Mud Weight 8.8
 Filtrate 14.8 NCL
 Other JUN 23

CONFIDENTIAL

SAMPLER ANALYSIS

Resistivity 108 ohms @ 64 F
 Chlorides 170,000 ppm.
 Gravity _____ corrected @ 60 F

PIPE RECOVERY

TOP
 Resistivity 138 ohms @ 63 F
 Chlorides 86,000 ppm.

MIDDLE
 Resistivity 100 ohms @ 64 F
 Chlorides 150,000 ppm.

BOTTOM
 Resistivity 108 ohms @ 64 F
 Chlorides 170,000 ppm.

RELEASED

JUL 26 1995

FROM CONFIDENTIAL

TRILOBITE TESTING L.L.C.

P.O. Box 362 • Hays, Kansas 67601

ORIGINAL

Test Ticket

No 6690

Well Name & No. <u>Feiertag #1-7</u>	Test No. <u>3</u>	Date <u>6-3-94</u>
Company <u>Murfin Drilling & Canyon Energy</u>	Zone Tested <u>Crown / Groove</u>	
Address <u>200 N Water Suite 300 Wichita KS 67202</u>	Elevation <u>2754 KB</u>	
Co. Rep./Geol <u>Paul Godowik</u>	Cont. <u>Murfin 21</u>	Est. Ft. of Pay _____
Location: Sec. <u>7</u>	Twp. <u>33</u>	Rge. <u>30</u>
	Co. <u>Meade</u>	State <u>KS</u>
No. of Copies _____	Distribution Sheet: Yes <input checked="" type="checkbox"/> No _____	Turnkey: Yes <input checked="" type="checkbox"/> No _____
		Evaluation _____

Interval Tested <u>3230-3257</u>	Drill Pipe Size <u>4 1/2" H</u>
Anchor Length <u>27</u>	Top Choke — 1" Bottom Choke — 3/4"
Top Packer Depth <u>3225</u>	Hole Size — 7 7/8" Rubber Size — 6 3/4"
Bottom Packer Depth <u>3230</u>	Wt. Pipe I.D. — 2.7 Ft. Run _____
Total Depth <u>3257</u>	Drill Collar — 2.25 Ft. Run <u>556" H</u>
Mud Wt. <u>8.8</u> lb/gal.	Viscosity <u>52</u> Filtrate <u>14.8</u>

Tool Open @ 3:30 AM Initial Blow Fair blow build bottom in 20 min NGL
FSN bleed off blow for 10 min no blow back
 Final Blow Very weak blow build to bottom in 28 min
FSI bleed off blow no blow back

JUN 23

CONFIDENTIAL

Recovery — Total Feet <u>660</u>	Feet of Gas in Pipe _____	Flush Tool? <u>NO</u>
Rec. <u>60</u> Feet Of <u>Muddy WTR</u>	%gas _____ %oil <u>60</u> %water <u>40</u> %mud _____	
Rec. _____ Feet Of _____	%gas _____ %oil _____ %water _____ %mud _____	
Rec. <u>600</u> Feet Of <u>salt water</u>	%gas _____ %oil <u>100</u> %water _____ %mud _____	
Rec. _____ Feet Of _____	%gas _____ %oil _____ %water _____ %mud _____	
Rec. _____ Feet Of _____	%gas _____ %oil _____ %water _____ %mud _____	

BHT 100 °F Gravity _____ °API @ _____ °F Corrected Gravity _____ °API
 RW 108 @ 64 °F Chlorides 110,000 ppm Recovery Chlorides 6,000 ppm System

- (A) Initial Hydrostatic Mud 1533 PSI AK1 Recorder No. 15337 Range 3975
- (B) First Initial Flow Pressure 69 PSI @ (depth) 3233 w/Clock No. 26191
- (C) First Final Flow Pressure 148 PSI AK1 Recorder No. 10333 Range 4050
- (D) Initial Shut-in Pressure 729 PSI @ (depth) 3254 w/Clock No. 14389
- (E) Second Initial Flow Pressure 237 PSI AK1 Recorder No. _____ Range _____
- (F) Second Final Flow Pressure 345 PSI @ (depth) _____ w/Clock No. _____
- (G) Final Shut-in Pressure 729 PSI Initial Opening 30 Test 600
- (H) Final Hydrostatic Mud 1513 PSI Initial Shut-in 45 Jars 200

Final Flow 60 Safety Joint 50
 Final Shut-in 60 Straddle _____
 Circ. Sub 7 N/E
 Sampler 200
 Extra Packer
 Other _____

TRIOBITE TESTING L.L.C. SHALL NOT BE LIABLE FOR DAMAGE OF ANY KIND OF THE PROPERTY OR PERSONNEL OF THE ONE FOR WHOM A TEST IS MADE, OR FOR ANY LOSS SUFFERED OR SUSTAINED, DIRECTLY OR INDIRECTLY, THROUGH THE USE OF ITS EQUIPMENT, OR ITS STATEMENTS OR OPINION CONCERNING THE RESULTS OF ANY TEST. TOOLS LOST OR DAMAGED IN THE HOLE SHALL BE PAID FOR AT COST BY THE PARTY FOR WHOM THE TEST IS MADE.

Approved By Paul F. Godowik
 Our Representative R. Colby

TRILOBITE TESTING, L.L.C.

P.O. Box 362 • Hays, Kansas 67601

CONFIDENTIAL

ORIGINAL

Drill-Stem Test Data

Well Name FEIERTAG #1-7 Test No. 4 Date 6/7/94
 Company MURFIN DRILLING CO INC/CANYON ENERGY Zone SWOPE
 Address 250 N WATER SWT #300 WICHITA KS 67202 Elevation 2754
 Co. Rep./Geo. PAUL GODOWIC Cont. MURFIN DRLG RIG #21 Est. Ft. of Pay _____
 Location: Sec. 7 Twp. 33S Rge. 30W Co. MEADE State KS

Interval Tested	<u>4925-4995</u>	Drill Pipe Size	<u>4.5" XH</u>
Anchor Length	<u>70</u>	Wt. Pipe I.D. - 2.7 Ft. Run	_____
Top Packer Depth	<u>4920</u>	Drill Collar - 2.25 Ft. Run	<u>556</u>
Bottom Packer Depth	<u>4925</u>	Mud Wt.	<u>9.3</u> lb/Gal.
Total Depth	<u>4995</u>	Viscosity	<u>50</u> Filtrate <u>10</u>

Tool Open @ 10:25PM Initial Blow FAIR BLOW BOTTOM OF BUCKET IN 7 MINUTES
 Final Blow WEAK BLOW BUILT TO BOTTOM OF BUCKET IN 25 MINUTES
NO BLOW BACK

Recovery - Total Feet 435 Flush Tool? NO

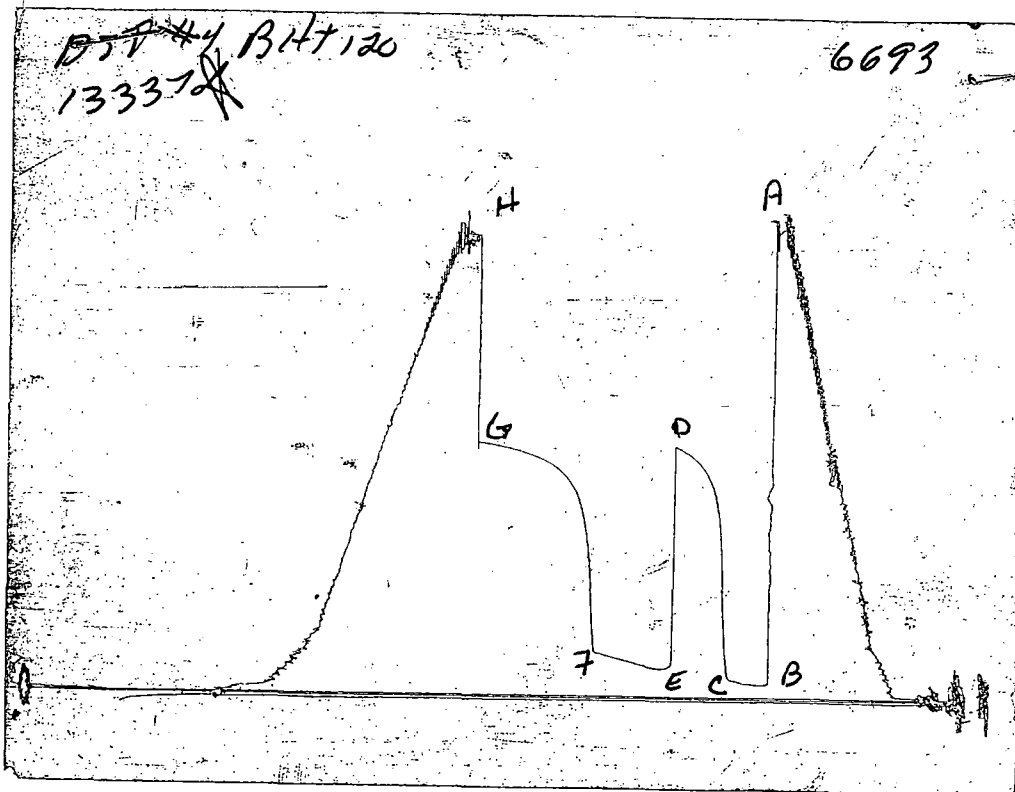
Rec. 135 Feet of DRILLING MUD
 Rec. 120 Feet of HEAVY GAS CUT EMULSION 60%GAS/40%EMULSION KCC
 Rec. 180 Feet of SALT WATER
 Rec. _____ Feet of _____
 Rec. _____ Feet of _____

JUN 23
CONFIDENTIAL

BHT 120 °F Gravity _____ °API @ _____ °F Corrected Gravity _____ °API
 RW 0.115 @ 66 °F Chlorides 95000 ppm Recovery Chlorides 3000 ppm System

(A) Initial Hydrostatic Mud 2464.4 PSI AK1 Recorder No. 13337 Range 3975
 (B) First Initial Flow Pressure 64.2 PSI @ (depth) 4928 w / Clock No. 26191
 (C) First Final Flow Pressure 96.8 PSI AK1 Recorder No. 10333 Range 4050
 (D) Initial Shut-in Pressure 1292.4 PSI @ (depth) 4992 w / Clock No. 14389
 (E) Second Initial Flow Pressure 145.3 PSI AK1 Recorder No. _____ Range _____
 (F) Second Final Flow Pressure 229.2 PSI @ (depth) _____ w / Clock No. _____
 (G) Final Shut-in Pressure 1302.4 PSI Initial Opening 30 Final Flow 60
 (H) Final Hydrostatic Mud 2365.6 PSI Initial Shut-in 45 Final Shut-in 90

Our Representative ROBERT COLLINS



This is an actual photograph of recorder chart

RELEASED

JUL 26 1995

FROM CONFIDENTIAL

FIELD
READING

OFFICE
READING

KCC

JUN 23

CONFIDENTIAL

(A) INITIAL HYDROSTATIC MUD	2496	2464.4
(B) FIRST INITIAL FLOW PRESSURE	59	64.2
(C) FIRST FINAL FLOW PRESSURE	98	96.8
(D) INITIAL CLOSED-IN PRESSURE	1274	1292.4
(E) SECOND INITIAL FLOW PRESSURE	128	145.3
(F) SECOND FINAL FLOW PRESSURE	227	229.2
(G) FINAL CLOSED-IN PRESSURE	1294	1302.4
(H) FINAL HYDROSTATIC MUD	2367	2365.6

FLUID SAMPLER DATA

ORIGINAL

Ticket No.: 6693 Date: 6/7/94
 Company: MURFIN DRILLING CO INC/CANYON ENERGY
 Lease: FEIERTAG #1-7 Test No.: 4
 County: MEADE Sec.: 7 Twp.: 33S Rng.: 30W

SAMPLER RECOVERY

Gas 2000
 Oil
 Mud
 Water 2000
 Other
 Pressure 500
 TOTAL 4000

PIT MUD ANALYSIS

Chlorides 3000
 Resistivity ohms@ F
 Viscosity 50
 Mud Wt. 9.3
 Filtrate 10
 Other

KCC
 JUN 23
 CONFIDENTIAL

SAMPLER ANALYSIS

Resistivity ohms@ F
 Chlorides ppm.
 Gravity corrected @60F

PIPE RECOVERY

TOP

Resistivity ohms@ F
 Chlorides ppm

MIDDLE

Resistivity ohms@ F
 Chlorides ppm

BOTTOM

Resistivity 0.115 ohms@ 66 F
 Chlorides 95000 ppm

TRILOBITE TESTING L.L.C.

P.O. Box 362 - Hays, Kansas 67601

1658
1662

ORIGINAL

FLUID SAMPLER DATA

Ticket No. 6693 Date 6-7-94
Company Name MDE
Lease Ceierkas 1-7 Test No. 4
County Meade Ks Sec. 7 Twp. 33 Rng. 30

SAMPLER RECOVERY

Gas 2000 4086 ML
Oil _____ ML
Mud _____ ML
Water 2000 ML
Other _____ ML
Pressure 500 PSI
Total 4060 ML

PIT MUD ANALYSIS

Chlorides 3000 ppm.
Resistivity _____ ohms @ _____ F
Viscosity 50
Mud Weight 9.3 NCL
Filtrate 10.0 JUN 23
Other _____ **CONFIDENTIAL**

SAMPLER ANALYSIS

Resistivity _____ ohms @ _____ F
Chlorides _____ ppm.
Gravity _____ corrected @ 60 F

PIPE RECOVERY

TOP
Resistivity _____ ohms @ _____ F
Chlorides _____ ppm.
MIDDLE
Resistivity _____ ohms @ _____ F
Chlorides _____ ppm.
BOTTOM
Resistivity 115 ohms @ 66 F
Chlorides 95,000 ppm.

RELEASED

JUL 26 1995

FROM CONFIDENTIAL

TRIOBITE TESTING L.L.C.

P.O. Box 362 • Hays, Kansas 67601

ORIGINAL

Test Ticket CONFIDENTIAL No 6693

Well Name & No. Ferietag 1-7 Test No. 4 Date 6-7-94
 Company Murphy Zone Tested SLop
 Address _____ Elevation 2754 KB
 Co. Rep./Geo. _____ Cont. Murphy 21 Est. Ft. of Pay 11
 Location: Sec. 7 Twp. 33 Rge. 30 Co. Meads State KS
 No. of Copies _____ Distribution Sheet _____ Yes No Turnkey _____ Yes No _____ Evaluation _____

Interval Tested 4925-4995 Drill Pipe Size 4 1/2 NH
 Anchor Length 70 Top Choke — 1" _____ Bottom Choke — 3/4" _____
 Top Packer Depth 4920 Hole Size — 7 7/8" _____ Rubber Size — 6 3/4" _____
 Bottom Packer Depth 4925 Wt. Pipe I.D. — 2.7 Ft. Run _____
 Total Depth 4995 Drill Collar — 2.25 Ft. Run 556 NH
 Mud Wt. 9.3 lb/gal. Viscosity 50 Filtrate 10.0
 Tool Open @ 10:25 PM Initial Blow Fair blow bottom of bucket in 7 min

Final Blow Weak blow b/w to bottom in 25 min
no blow back KCU

Recovery — Total Feet 435 Feet of Gas In Pipe _____ JUN 23 Flush Tool? NO

Rec.	Feet Of	% gas	% oil	% water	% mud
<u>135</u>	<u>DR 15 mud</u>			<u>100</u>	
<u>120</u>	<u>Heavy gas cap Emulsion</u>	<u>60</u>			
	<u>Emulsion 40%</u>				
<u>180</u>	<u>salt water</u>			<u>100</u>	

BHT 120 °F Gravity _____ °API @ _____ °F Corrected Gravity _____ °API
 RW 115 @ 66 °F Chlorides 95,000 ppm Recovery Chlorides 3,000 ppm System

(A) Initial Hydrostatic Mud 2496 PSI Ak1 Recorder No. 10337 Range 3975
 (B) First Initial Flow Pressure 59 PSI @ (depth) 4928 w/Clock No. 26191
 (C) First Final Flow Pressure 98 PSI Ak1 Recorder No. 10333 Range 4050
 (D) Initial Shut-In Pressure 1274 PSI @ (depth) 4992 w/Clock No. 14389
 (E) Second Initial Flow Pressure 128 PSI Ak1 Recorder No. _____ Range _____
 (F) Second Final Flow Pressure 227 PSI @ (depth) _____ w/Clock No. _____
 (G) Final Shut-In Pressure 1294 PSI Initial Opening 30 Test 600
 (H) Final Hydrostatic Mud 2367 PSI Initial Shut-In 45 Jars 200

Final Flow 60 Safety Joint 50
 Final Shut-In 90 Straddle _____
 Circ. Sub KAC
 Sampler 200
 Extra Packer _____
 Other _____

Approved By Paul F. Dodge
 Our Representative R. Callos

TRILOBITE TESTING, L.L.C.

P.O. Box 362 • Hays, Kansas 67601

Drill-Stem Test Data

CONFIDENTIAL
ORIGINAL

Well Name FEIERTAG #1-7 Test No. 5 Date 6/8/94
 Company MURFIN DRILLING CO INC/CANYON ENERGY Zone LOWER KC
 Address 250 N WATER SWT #300 WICHITA KS 67202 Elevation 2754
 Co. Rep./Geo. PAUL GODOWIC Cont. MURFIN DRLG RIG #21 Est. Ft. of Pay 19
 Location: Sec. 7 Twp. 33S Rge. 30W Co. MEADE State KS

Interval Tested 5005-5031 Drill Pipe Size 4.5" XH
 Anchor Length 26 Wt. Pipe I.D. - 2.7 Ft. Run _____
 Top Packer Depth 5000 Drill Collar - 2.25 Ft. Run 556
 Bottom Packer Depth 5005 Mud Wt. 9.1 lb/Gal.
 Total Depth 5031 Viscosity 62 Filtrate 9.6

Tool Open @ 5:35PM Initial Blow FAIR BLOW BUILT TO BOTTOM IN 12 MINUTES

Final Blow WEAK BLOW BOTTOM OF BUCKET IN 20 MINUTES
NO BLOW BACK

Recovery - Total Feet 960 Flush Tool? NO

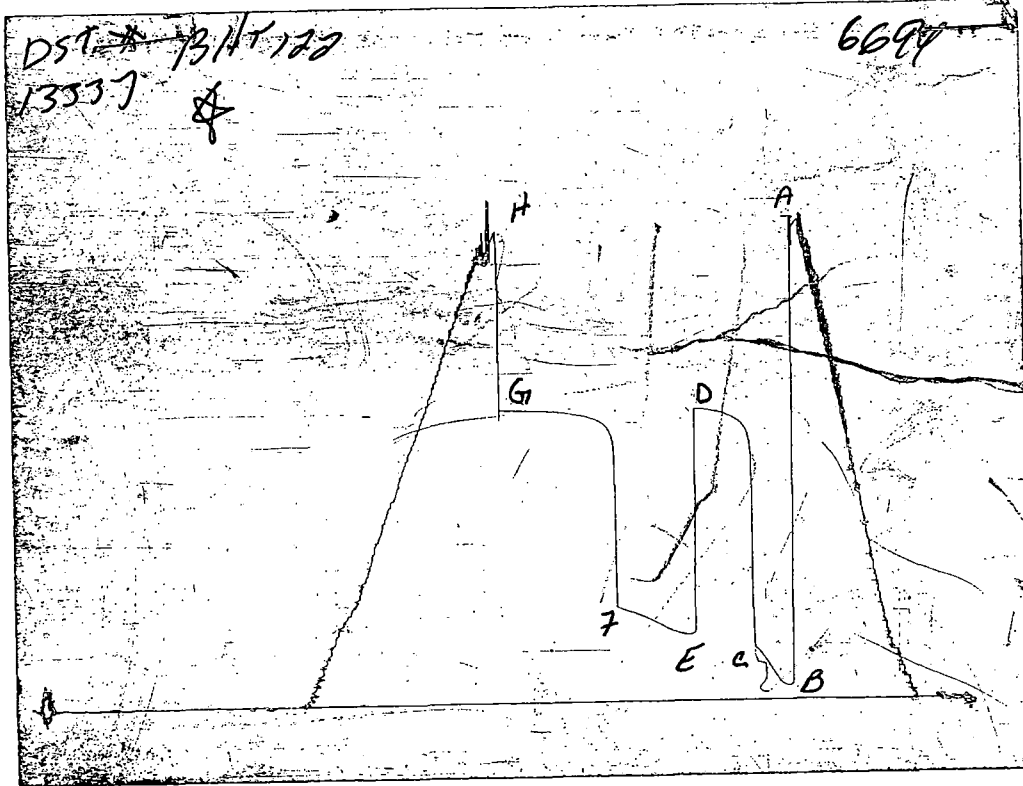
Rec. 60 Feet of MUDDY WATER 60%WATER/40%MUD
 Rec. 900 Feet of SALT WATER
 Rec. _____ Feet of _____
 Rec. _____ Feet of _____
 Rec. _____ Feet of _____

NO
JUN 23
CONFIDENTIAL

BHT 122 °F Gravity _____ °API @ _____ °F Corrected Gravity _____ °API
 RW 0.1 @ 70 °F Chlorides 130000 ppm Recovery Chlorides 45000 ppm System

(A) Initial Hydrostatic Mud 2481.2 PSI AK1 Recorder No. 13337 Range 3975
 (B) First Initial Flow Pressure 74.1 PSI @ (depth) 5008 w / Clock No. 26191
 (C) First Final Flow Pressure 272.7 PSI AK1 Recorder No. 10333 Range 4050
 (D) Initial Shut-in Pressure 1515.6 PSI @ (depth) 5028 w / Clock No. 14389
 (E) Second Initial Flow Pressure 341.9 PSI AK1 Recorder No. _____ Range _____
 (F) Second Final Flow Pressure 491.1 PSI @ (depth) _____ w / Clock No. _____
 (G) Final Shut-in Pressure 1523.4 PSI Initial Opening 30 Final Flow 60
 (H) Final Hydrostatic Mud 2436.7 PSI Initial Shut-in 45 Final Shut-in 90

Our Representative ROBERT COLLINS



This is an actual photograph of recorder chart

KCC

JUN 23

CONFIDENTIAL

	FIELD READING	OFFICE READING
(A) INITIAL HYDROSTATIC MUD	2417	2481.2
(B) FIRST INITIAL FLOW PRESSURE	59	74.1
(C) FIRST FINAL FLOW PRESSURE	256	272.7
(D) INITIAL CLOSED-IN PRESSURE	1503	1515.6
(E) SECOND INITIAL FLOW PRESSURE	336	341.9
(F) SECOND FINAL FLOW PRESSURE	474	491.1
(G) FINAL CLOSED-IN PRESSURE	1503	1523.4
(H) FINAL HYDROSTATIC MUD	2407	2436.7

FLUID SAMPLER DATA

ORIGINAL

Ticket No.: 6694 Date: 6/8/94
 Company: MURFIN DRILLING CO INC/CANYON ENERGY
 Lease: FEIERTAG #1-7 Test No.: 5
 County: MEADE Sec.: 7 Twp.: 33S Rng.: 30W

SAMPLER RECOVERY

Gas
 Oil
 Mud
 Water 4000
 Other
 Pressure
 TOTAL 4000

SAMPLER ANALYSIS

Resistivity 0.1 ohms@ 70 F
 Chlorides 130000 ppm.
 Gravity corrected @60F

PIT MUD ANALYSIS

Chlorides 45000
 Resistivity ohms@ F
 Viscosity 62
 Mud Wt. 9.1
 Filtrate 9.6
 Other

KCC
 JUN 23
 CONFIDENTIAL

PIPE RECOVERY

TOP

Resistivity 0.141 ohms@ 74 F
 Chlorides 80000 ppm

MIDDLE

Resistivity 0.09 ohms@ 72 F
 Chlorides 140000 ppm

BOTTOM

Resistivity 0.1 ohms@ 70 F
 Chlorides 130000 ppm

1662

TRILOBITE TESTING L.L.C.

P.O. Box 362 - Hays, Kansas 67601

ORIGINAL

FLUID SAMPLER DATA

Ticket No. 6694 Date 6-8-99
 Company Name MDC
 Lease ~~Fe:ertog~~ 1-7 Test No. 5
 County Meade KS Sec. 7 Twp. 33 Rng. 30

SAMPLER RECOVERY

Gas _____ ML
 Oil _____ ML
 Mud _____ ML
 Water 4000 ML
 Other _____ ML
 Pressure _____ PSI
 Total 4000 ML

PIT MUD ANALYSIS

Chlorides 45,00 ppm.
 Resistivity _____ ohms @ _____ F
 Viscosity 62
 Mud Weight 9.1 NCC
 Filtrate 9.6 JUN 23
 Other CONFIDENTIAL

SAMPLER ANALYSIS

Resistivity .100 ohms @ 70 F
 Chlorides 130,000 ppm.
 Gravity _____ corrected @ 60 F

PIPE RECOVERY

TOP
 Resistivity .141 ohms @ 74 F
 Chlorides 80,000 ppm.

MIDDLE
 Resistivity .090 ohms @ 72 F
 Chlorides 140,000 ppm.

BOTTOM
 Resistivity .100 ohms @ 70 F
 Chlorides 130,000 ppm.

Test Ticket CONFIDENTIAL No 6694

Well Name & No. Ferretas 1-87 Test No. 5 Date 6-8-94
 Company MDC Zone Tested Lower K-City
 Address _____ Elevation 2754 KB
 Co. Rep./Geo Paul Godarce Cont. Mar Em 21 Est. Ft. of Pay 19
 Location: Sec. 7 Twp. 33 Rge. 30 Co. Medco State KS
 No. of Copies _____ Distribution Sheet _____ Yes No Turnkey _____ Yes No _____ Evaluation _____

Interval Tested 5005-5031 Drill Pipe Size 4 1/2 NA
 Anchor Length 26 Top Choke — 1" _____ Bottom Choke — 3/4" _____
 Top Packer Depth 5000 Hole Size — 7 7/8" _____ Rubber Size — 6 3/4" _____
 Bottom Packer Depth 5005 Wt. Pipe I.D. — 2.7 Ft. Run _____
 Total Depth 5031 Drill Collar — 2.25 Ft. Run 556 NA
 Mud Wt. 9.1 lb/gal. Viscosity 62 Filtrate 9.6
 Tool Open @ 5:35 PM Initial Blow Fair blow back to bottom in 12 min in NCU

Final Blow Weak blow bottom in 20 min JUN 23
NO blow back CONFIDENTIAL

Recovery — Total Feet	Feet of Gas In Pipe	Flush Tool?
Rec. <u>60</u> Feet Of <u>M/WTR</u>	%gas _____ %oil <u>60</u> %water <u>40</u> %mud _____	<u>NO</u>
Rec. _____ Feet Of _____	%gas _____ %oil _____ %water _____ %mud _____	
Rec. <u>900</u> Feet Of <u>SALT WTR</u>	%gas _____ %oil <u>100</u> %water _____ %mud _____	
Rec. _____ Feet Of _____	%gas _____ %oil _____ %water _____ %mud _____	
Rec. _____ Feet Of _____	%gas _____ %oil _____ %water _____ %mud _____	

BHT 122 °F Gravity _____ °API @ _____ °F Corrected Gravity _____ °API
 RW 100 @ 70 °F Chlorides 130,000 ppm Recovery Chlorides 45,000 ppm System

(A) Initial Hydrostatic Mud 2417 PSI AK1 Recorder No. 13337 Range 3975
 (B) First Initial Flow Pressure 59 PSI @ (depth) 5008 w/Clock No. 26191
 (C) First Final Flow Pressure 256 PSI AK1 Recorder No. 40333 Range 4050
 (D) Initial Shut-In Pressure 1503 PSI @ (depth) 5078 w/Clock No. 24389
 (E) Second Initial Flow Pressure 336 PSI AK1 Recorder No. _____ Range _____
 (F) Second Final Flow Pressure 474 PSI @ (depth) _____ w/Clock No. _____
 (G) Final Shut-In Pressure 1503 PSI Initial Opening 30 Test 700
 (H) Final Hydrostatic Mud 2407 PSI Initial Shut-In 45 Jars 200

Final Flow 60 Safety Joint 50
 Final Shut-In 90 Straddle _____
 Circ. Sub 2 N/C
 Sampler 200
 Extra Packer _____
 Other _____

Approved By Paul F. Godarce
 Our Representative R. Collins

TRILOBITE TESTING, L.L.C.

P.O. Box 362 • Hays, Kansas 67601

Drill-Stem Test Data

CONFIDENTIAL

ORIGINAL

Well Name FEIERTAG #1-7 Test No. 6 Date 6/11/94
 Company MURFIN DRILLING CO INC/CANYON ENERGY Zone ATOKA
 Address 250 N WATER SWT #300 WICHITA KS 67202 Elevation 2754
 Co. Rep./Geo. PAUL GODOWIC Cont. MURFIN DRLG RIG #21 Est. Ft. of Pay 5
 Location: Sec. 7 Twp. 33S Rge. 30W Co. MEADE State KS

Interval Tested	<u>5590-5613</u>	Drill Pipe Size	<u>4.5" XH</u>
Anchor Length	<u>23</u>	Wt. Pipe I.D. - 2.7 Ft. Run	
Top Packer Depth	<u>5585</u>	Drill Collar - 2.25 Ft. Run	<u>556</u>
Bottom Packer Depth	<u>5590</u>	Mud Wt.	<u>9.2</u> lb/Gal.
Total Depth	<u>5613</u>	Viscosity	<u>50</u> Filtrate <u>9.6</u>

Tool Open @ _____ Initial Blow VERY WEAK SURFACE BLOW BUILT TO 1"

Final Blow NO BLOW

Recovery - Total Feet 60 Flush Tool? NO

Rec. <u>60</u>	Feet of	<u>DRILLING MUD</u>	KCC
Rec. _____	Feet of	_____	JUN 23
Rec. _____	Feet of	_____	CONFIDENTIAL
Rec. _____	Feet of	_____	
Rec. _____	Feet of	_____	

BHT 130 °F Gravity _____ °API @ _____ °F Corrected Gravity _____ °API
 RW _____ @ _____ °F Chlorides _____ ppm Recovery Chlorides 3500 ppm System

(A) Initial Hydrostatic Mud 2740.7 PSI AK1 Recorder No. 13337 Range 3975

(B) First Initial Flow Pressure 55.3 PSI @ (depth) 5593 w / Clock No. 26191

(C) First Final Flow Pressure 55.3 PSI AK1 Recorder No. 10333 Range 4050

(D) Initial Shut-in Pressure 1605.5 PSI @ (depth) 5610 w / Clock No. 14389

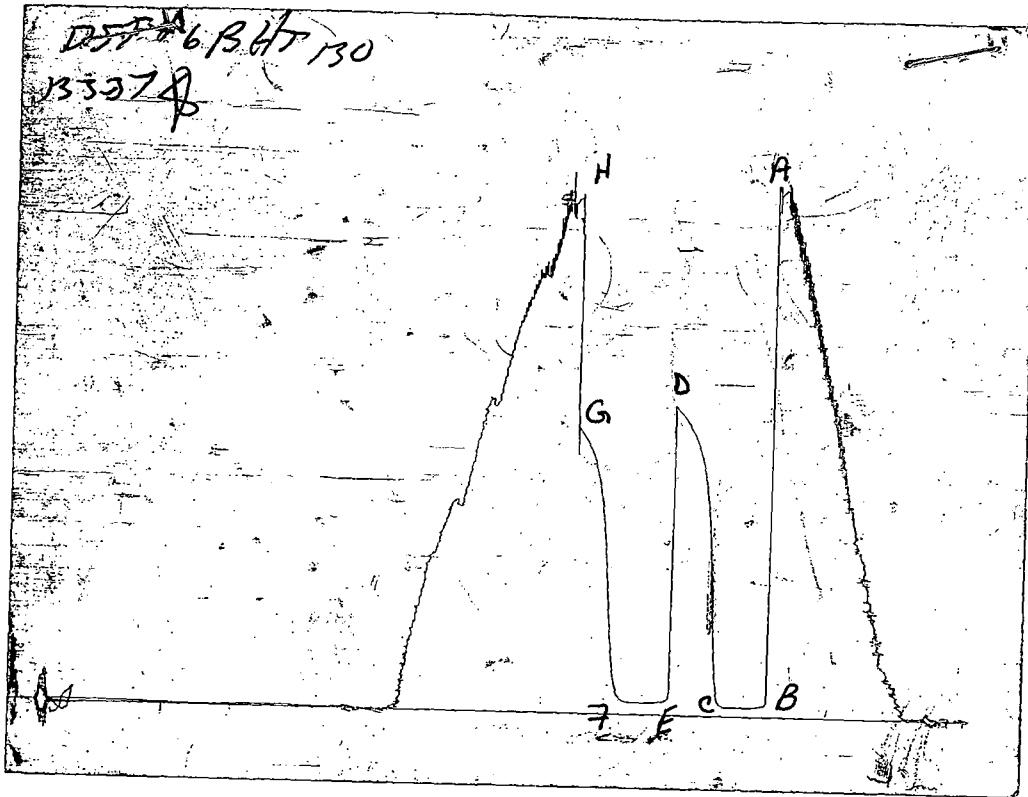
(E) Second Initial Flow Pressure 82.0 PSI AK1 Recorder No. _____ Range _____

(F) Second Final Flow Pressure 82.0 PSI @ (depth) _____ w / Clock No. _____

(G) Final Shut-in Pressure 1493.0 PSI Initial Opening 30 Final Flow 30

(H) Final Hydrostatic Mud 2682.0 PSI Initial Shut-in 45 Final Shut-in 45

Our Representative ROBERT COLLINS



This is an actual photograph of recorder chart

KCC

JUN 23

CONFIDENTIAL

RELEASED

JUL 26 1995

FROM CONFIDENTIAL

FIELD
READING

OFFICE
READING

(A) INITIAL HYDROSTATIC MUD	2682	2740.7
(B) FIRST INITIAL FLOW PRESSURE	49	55.3
(C) FIRST FINAL FLOW PRESSURE	49	55.3
(D) INITIAL CLOSED-IN PRESSURE	1601	1605.5
(E) SECOND INITIAL FLOW PRESSURE	59	82
(F) SECOND FINAL FLOW PRESSURE	59	82
(G) FINAL CLOSED-IN PRESSURE	1444	1493
(H) FINAL HYDROSTATIC MUD	2652	2682

FLUID SAMPLER DATA

ORIGINAL

Ticket No.: 6695 Date: 6/11/94
 Company: MURFIN DRILLING CO INC/CANYON ENERGY
 Lease: FEIERTAG #1-7 Test No.: 6
 County: MEADE Sec.: 7 Twp.: 33S Rng.: 30W

SAMPLER RECOVERY

Gas
 Oil
 Mud 4000
 Water
 Other
 Pressure
 TOTAL 4000

SAMPLER ANALYSIS

Resistivity ohms@ F
 Chlorides ppm.
 Gravity corrected @60F

PIT MUD ANALYSIS

Chlorides 3500
 Resistivity ohms@ F
 Viscosity 50
 Mud Wt. 9.2
 Filtrate 9.6
 Other

KCC
 JUN 23
 CONFIDENTIAL

PIPE RECOVERY

TOP

Resistivity ohms@ F
 Chlorides ppm

MIDDLE

Resistivity ohms@ F
 Chlorides ppm

BOTTOM

Resistivity ohms@ F
 Chlorides ppm

TRILOBITE TESTING L.L.C.

P.O. Box 362 - Hays, Kansas 67601

ORIGINAL

FLUID SAMPLER DATA

Ticket No. 6695 Date 6-11-94
Company Name MDC
Lease Feiertag 1-7 Test No. 6
County Meade Ks Sec. 7 Twp. 33 Rng. 30

SAMPLER RECOVERY

Gas _____ ML
Oil _____ ML
Mud 4000 ML
Water _____ ML
Other _____ ML
Pressure — PSI
Total 4000 ML

PIT MUD ANALYSIS

Chlorides 3500 ppm.
Resistivity _____ ohms @ _____ F
Viscosity 50
Mud Weight 9.2
Filtrate 9.6 NCC
Other _____ JUN 23

CONFIDENTIAL

SAMPLER ANALYSIS

Resistivity _____ ohms @ _____ F
Chlorides _____ ppm.
Gravity _____ corrected @ 60 F

PIPE RECOVERY

TOP
Resistivity _____ ohms @ _____ F
Chlorides _____ ppm.
MIDDLE
Resistivity _____ ohms @ _____ F
Chlorides _____ ppm.
BOTTOM
Resistivity _____ ohms @ _____ F
Chlorides _____ ppm.

RELEASED

JUL 26 1995

FROM CONFIDENTIAL

TRILOBITE TESTING L.L.C.

P.O. Box 362 • Hays, Kansas 67601

CONFIDENTIAL Test Ticket

ORIGINAL

No. 6695

Well Name & No. Feiertag 1-7 Test No. 6 Date 6-11-94
 Company MDC Zone Tested MOKA
 Address Wichita ks 67202 Elevation 2754 KB
 Co. Rep./Geo Paul Godwin cont. Murphy 21 Est. Ft. of Pay 5
 Location: Sec. 7 Twp. 33 Rge. 30 Co. meade State KS
 No. of Copies _____ Distribution Sheet _____ Yes No Turnkey _____ Yes No _____ Evaluation _____

Interval Tested 5590-5613 Drill Pipe Size 4 1/2 in
 Anchor Length 2.3 Top Choke — 1" Bottom Choke — 3/4"
 Top Packer Depth 5585 Hole Size — 7 7/8" Rubber Size — 6 3/4"
 Bottom Packer Depth 5590 Wt. Pipe I.D. — 2.7 Ft. Run _____
 Total Depth 5613 Drill Collar — 2.25 Ft. Run 5562A
 Mud Wt. 9.2 lb/gal. Viscosity 50 Filtrate 9.6
 Tool Open @ _____ Initial Blow Vary weak surface blow build control
 Final Blow NO blow JUN 23

CONFIDENTIAL

Recovery — Total Feet 60 Feet of Gas In Pipe _____ Flush Tool? NO

Rec.	Feet Of	%gas	%oil	%water	%mud
<u>60</u>	<u>DRIS Mud</u>			<u>100</u>	
Rec.	Feet Of	%gas	%oil	%water	%mud
Rec.	Feet Of	%gas	%oil	%water	%mud
Rec.	Feet Of	%gas	%oil	%water	%mud

BHT 130 °F Gravity _____ °API @ _____ °F Corrected Gravity _____ °API
 RW _____ @ _____ °F Chlorides _____ ppm Recovery Chlorides 3500 ppm System

(A) Initial Hydrostatic Mud 2682 PSI AK1 Recorder No. 13337 Range 3975
 (B) First Initial Flow Pressure 49 PSI @ (depth) 5593 w/Clock No. 26191
 (C) First Final Flow Pressure 49 PSI AK1 Recorder No. 10333 Range 4050
 (D) Initial Shut-In Pressure 1601 PSI @ (depth) 5610 w/Clock No. 14389
 (E) Second Initial Flow Pressure 59 PSI AK1 Recorder No. _____ Range _____
 (F) Second Final Flow Pressure 59 PSI @ (depth) _____ w/Clock No. _____
 (G) Final Shut-In Pressure 1444 PSI Initial Opening 30 Test 700
 (H) Final Hydrostatic Mud 2652 PSI Initial Shut-In 45 Jars 200

Final Flow 30 Safety Joint 50
 Final Shut-In 45 Straddle _____
 Circ. Sub 7 in
 Sampler 200
 Extra Packer _____
 Other _____

Approved By Paul F. [Signature]
 Our Representative [Signature]

TOTAL PRICE \$ 1150

TRILOBITE TESTING, L.L.C.

P.O. Box 362 • Hays, Kansas 67601

CONFIDENTIAL

ORIGINAL

Drill-Stem Test Data

Well Name FEIERTAG #1-7 Test No. 7 Date 6/12/94
 Company MURFIN DRILLING CO INC/CANYON ENERGY Zone MORROW
 Address 250 N WATER SWT #300 WICHITA KS 67202 Elevation 2754
 Co. Rep./Geo. PAUL GODOWIC Cont. MURFIN DRLG RIG #21 Est. Ft. of Pay 9
 Location: Sec. 7 Twp. 33S Rge. 30W Co. MEADE State KS

Interval Tested 5606-5643 Drill Pipe Size 4.5" XH
 Anchor Length 37 Wt. Pipe I.D. - 2.7 Ft. Run _____
 Top Packer Depth 5601 Drill Collar - 2.25 Ft. Run 556
 Bottom Packer Depth 5606 Mud Wt. 9.2 lb/Gal.
 Total Depth 5643 Viscosity 50 Filtrate 9.6

Tool Open @ _____ Initial Blow WEAK SURFACE BLOW BUILT TO 2 1/2"

Final Blow 1/2" BLOW THROUGHOUT

Recovery - Total Feet 10 Flush Tool? NO

Rec. 10 Feet of DRILLING MUD
 Rec. _____ Feet of _____
 Rec. _____ Feet of _____
 Rec. _____ Feet of _____
 Rec. _____ Feet of _____

KCC

JUN 23

CONFIDENTIAL

BHT 130 °F Gravity _____ °API @ _____ °F Corrected Gravity _____ °API
 RW _____ @ _____ °F Chlorides _____ ppm Recovery Chlorides 3500 ppm System

(A) Initial Hydrostatic Mud 2727.0 PSI AK1 Recorder No. 13337 Range 3975

(B) First Initial Flow Pressure 37.5 PSI @ (depth) 5609 w / Clock No. 26191

(C) First Final Flow Pressure 37.5 PSI AK1 Recorder No. 10333 Range 4050

(D) Initial Shut-in Pressure 58.3 PSI @ (depth) 5640 w / Clock No. 14389

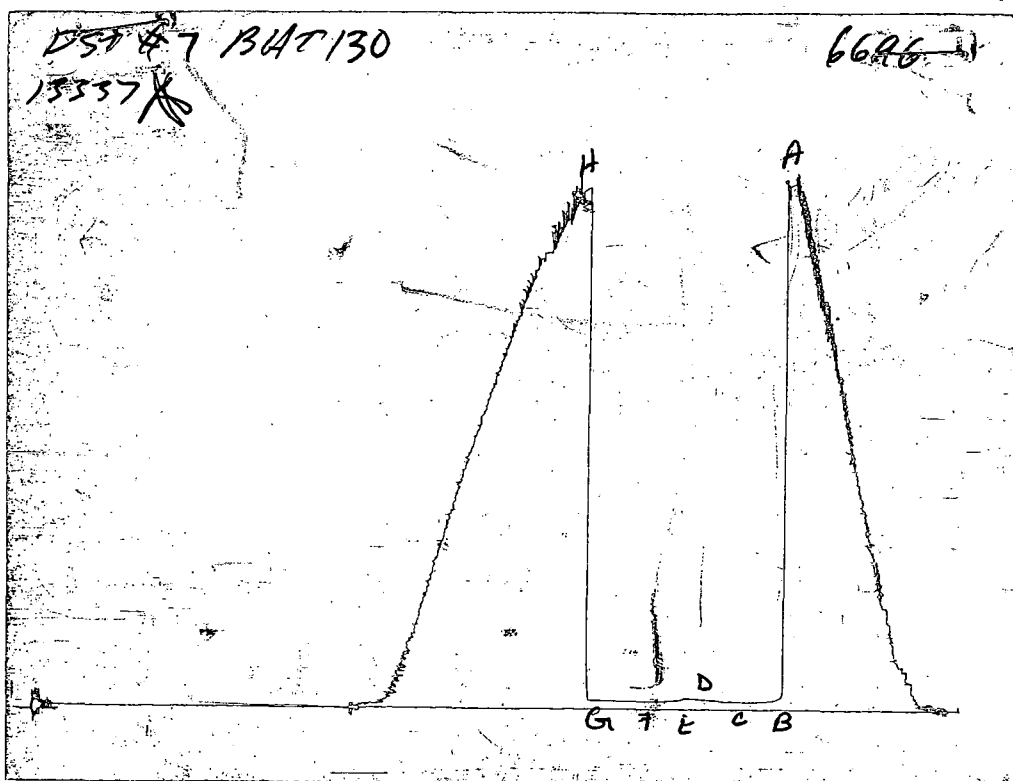
(E) Second Initial Flow Pressure 39.5 PSI AK1 Recorder No. _____ Range _____

(F) Second Final Flow Pressure 39.5 PSI @ (depth) _____ w / Clock No. _____

(G) Final Shut-in Pressure 39.5 PSI Initial Opening 30 Final Flow 30

(H) Final Hydrostatic Mud 2681.0 PSI Initial Shut-in 45 Final Shut-in 45

Our Representative ROBERT COLLINS



This is an actual photograph of recorder chart

KCC

JUN 23

CONFIDENTIAL

	FIELD READING	OFFICE READING
(A) INITIAL HYDROSTATIC MUD	2682	2727
(B) FIRST INITIAL FLOW PRESSURE	39	37.5
(C) FIRST FINAL FLOW PRESSURE	39	37.5
(D) INITIAL CLOSED-IN PRESSURE	59	58.3
(E) SECOND INITIAL FLOW PRESSURE	39	39.5
(F) SECOND FINAL FLOW PRESSURE	39	39.5
(G) FINAL CLOSED-IN PRESSURE	39	39.5
(H) FINAL HYDROSTATIC MUD	2652	2681

FLUID SAMPLER DATA

ORIGINAL

Ticket No.: 6696 Date: 6/12/94
 Company: MURFIN DRILLING CO INC/CANYON ENERGY
 Lease: FEIERTAG #1-7 Test No.: 7
 County: MEADE Sec.: 7 Twp.: 33S Rng.: 30W

SAMPLER RECOVERY

Gas
 Oil
 Mud 4000
 Water
 Other
 Pressure
 TOTAL 4000

PIT MUD ANALYSIS

Chlorides 3500
 Resistivity ohms@ F
 Viscosity 50
 Mud Wt. 9.2
 Filtrate 9.6
 Other

NCC
 JUN 23
 CONFIDENTIAL

SAMPLER ANALYSIS

Resistivity ohms@ F
 Chlorides ppm.
 Gravity corrected @60F

PIPE RECOVERY

TOP

Resistivity ohms@ F
 Chlorides ppm

MIDDLE

Resistivity ohms@ F
 Chlorides ppm

BOTTOM

Resistivity ohms@ F
 Chlorides ppm

RELEASED
 JUL 26 1995
 FROM CONFIDENTIAL

TRILOBITE TESTING L.L.C.

P.O. Box 362 - Hays, Kansas 67601

ORIGINAL

FLUID SAMPLER DATA

Ticket No. 6696 Date 6-12-99

Company Name MDC

Lease Ferretas 1-7 Test No. 7

County Meade KS Sec. 7 Twp. 33 Rng. 30

SAMPLER RECOVERY

Gas _____ ML

Oil _____ ML

Mud 4000 ML

Water _____ ML

Other _____ ML

Pressure 0 PSI

Total 4000 ML

PIT MUD ANALYSIS

Chlorides 3500 ppm.

Resistivity _____ ohms @ _____ F

Viscosity 50

Mud Weight 9.2

Filtrate 9.6

Other _____

NO
JUN 23
CONFIDENTIAL

SAMPLER ANALYSIS

Resistivity _____ ohms @ _____ F

Chlorides _____ ppm.

Gravity _____ corrected @ 60 F

PIPE RECOVERY

TOP

Resistivity _____ ohms @ _____ F

Chlorides _____ ppm.

MIDDLE

Resistivity _____ ohms @ _____ F

Chlorides _____ ppm.

BOTTOM

Resistivity _____ ohms @ _____ F

Chlorides _____ ppm.

ORIGINAL

CONFIDENTIAL

Test Ticket

No 6696

Well Name & No. Feiertag 1-7 Test No. 7 Date 6-12-94
 Company MOC Zone Tested Marrow
 Address Wichita ks 67202 Elevation 2754 KS
 Co. Rep./Geo. Paul Godwin Cont. Martin Est. Ft. of Pay 9
 Location: Sec. 7 Twp. 33 Rge. 30 Co. Meade State KS
 No. of Copies _____ Distribution Sheet _____ Yes X No _____ Turnkey _____ Yes X No _____ Evaluation _____

Interval Tested 5606-5643 Drill Pipe Size 4 7/8 NH
 Anchor Length 37 Top Choke — 1" _____ Bottom Choke — 1/4" _____
 Top Packer Depth 5601 Hole Size — 7 7/8" _____ Rubber Size — 6 3/4" _____
 Bottom Packer Depth 5606 Wt. Pipe I.D. — 2.7 Ft. Run _____
 Total Depth 5643 Drill Collar — 2.25 Ft. Run 556 NH
 Mud Wt. 9.2 lb/gal. Viscosity 50 Filtrate 9.6
 Tool Open @ _____ Initial Blow Weak surface blow build to 2000
 Final Blow 1/2 blow through cut

JUN 23

CONFIDENTIAL

Recovery — Total Feet 10 Feet of Gas In Pipe _____ Flush Tool? NO

Rec. _____	Feet Of _____	%gas _____	%oil _____	%water _____	%mud _____
Rec. <u>10</u>	Feet Of <u>DRIS mud</u>	%gas _____	%oil _____	%water <u>100</u>	%mud _____
Rec. _____	Feet Of _____	%gas _____	%oil _____	%water _____	%mud _____
Rec. _____	Feet Of _____	%gas _____	%oil _____	%water _____	%mud _____
Rec. _____	Feet Of _____	%gas _____	%oil _____	%water _____	%mud _____

BHT 130 °F Gravity _____ °API @ _____ °F Corrected Gravity _____ °API

RW _____ @ _____ °F Chlorides _____ ppm Recovery Chlorides 3500 ppm System

RELEASED

JUL 26 1995

FROM CONFIDENTIAL

(A) Initial Hydrostatic Mud 2682 PSI AK1 Recorder No. 13337 Range 3975
 (B) First Initial Flow Pressure 39 PSI @ (depth) 5609 w/Clock No. 26191
 (C) First Final Flow Pressure 39 PSI AK1 Recorder No. 10333 Range 4050
 (D) Initial Shut-In Pressure 59 PSI @ (depth) 5640 w/Clock No. 14389
 (E) Second Initial Flow Pressure 39 PSI AK1 Recorder No. _____ Range _____
 (F) Second Final Flow Pressure 39 PSI @ (depth) _____ w/Clock No. _____
 (G) Final Shut-In Pressure 39 PSI Initial Opening 30 Test X 700
 (H) Final Hydrostatic Mud 2652 PSI Initial Shut-In 45 Jars X 200

TRIOBITE TESTING L.L.C. SHALL NOT BE LIABLE FOR DAMAGE OF ANY KIND OF THE PROPERTY OR PERSONNEL OF THE ONE FOR WHOM A TEST IS MADE, OR FOR ANY LOSS SUFFERED OR SUSTAINED, DIRECTLY OR INDIRECTLY, THROUGH THE USE OF ITS EQUIPMENT, OR ITS STATEMENTS OR OPINION CONCERNING THE RESULTS OF ANY TEST. TOOLS LOST OR DAMAGED IN THE HOLE SHALL BE PAID FOR AT COST BY THE PARTY FOR WHOM THE TEST IS MADE.

Final Flow 30 Safety Joint X 30
 Final Shut-In 45 Straddle _____
 Circ. Sub X W/C
 Sampler X 200
 Extra Packer _____
 Other _____

Approved By Paul F. Godwin
 Our Representative [Signature]

TOTAL PRICE \$ 1150

TRILOBITE TESTING L.L.C. CONFIDENTIAL

P.O. Box 362 • Hays, Kansas 67601

ORIGINAL

Test Ticket

No 6697

Well Name & No. <u>Ferretag 117</u>		Test No. <u>8</u>	Date <u>6-13-94</u>
Company <u>MPC</u>		Zone Tested <u>Chester</u>	
Address <u>W. Chik ks 67202</u>		Elevation <u>2754 KB</u>	
Co. Rep./Geo. <u>Paul Bodowic</u>	Cont. <u>Marvin 21</u>	Est. Ft. of Pay <u>8</u>	
Location: Sec. <u>7</u>	Twp. <u>33</u>	Rge. <u>30</u>	Co. <u>Meade</u> State <u>ks</u>
No. of Copies _____	Distribution Sheet _____	Yes <input checked="" type="checkbox"/> No _____	Turnkey _____ Yes <input checked="" type="checkbox"/> No _____
		Yes <input checked="" type="checkbox"/> No _____	Evaluation _____

Interval Tested <u>5881-5900</u>	Drill Pipe Size <u>4-1/2 V41</u>
Anchor Length <u>19</u>	Top Choke — 1" _____ Bottom Choke — 3/4" _____
Top Packer Depth <u>5876</u>	Hole Size — 7 7/8" _____ Rubber Size — 6 3/4" _____
Bottom Packer Depth <u>5881</u>	Wt. Pipe I.D. — 2.7 Ft. Run _____
Total Depth <u>5900</u>	Drill Collar — 2.25 Ft. Run <u>556 V41</u>
Mud Wt. <u>9.2</u> lb/gal.	Viscosity <u>51</u> Filtrate <u>8.0</u>
Tool Open @ <u>12:25 AM</u>	Initial Blow <u>Good blow bottom of bucket in 5 min</u>
	<u>no blow back</u> KCC
Final Blow <u>Weak blow build to 1 1/2 through out</u>	JUN 23

Recovery — Total Feet 10 Feet of Gas in Pipe _____ CONFIDENTIAL
 Flush Tool NO

Rec. _____	Feet Of _____	%gas _____	%oil _____	%water _____	%mud _____
Rec. <u>10</u>	Feet Of <u>DRUG MUD</u>	%gas _____	%oil _____	%water <u>100</u>	%mud _____
Rec. _____	Feet Of <u>w. the some spots</u>	%gas _____	%oil _____	%water _____	%mud _____
Rec. _____	Feet Of <u>OF oil on top of tool</u>	%gas _____	%oil _____	%water _____	%mud _____
Rec. _____	Feet Of _____	%gas _____	%oil _____	%water _____	%mud _____

BHT 132 °F Gravity _____ °API @ _____ °F Corrected Gravity _____ °API

RW _____ @ _____ °F Chlorides _____ ppm Recovery Chlorides 3000 ppm System

(A) Initial Hydrostatic Mud <u>2838</u>	PSI	Ak1 Recorder No. <u>13337</u>	Range <u>3975</u>
(B) First Initial Flow Pressure <u>39</u>	PSI	@ (depth) <u>5884</u>	w/Clock No. <u>26191</u>
(C) First Final Flow Pressure <u>49</u>	PSI	Ak1 Recorder No. <u>10333</u>	Range <u>4050</u>
(D) Initial Shut-In Pressure <u>59</u>	PSI	@ (depth) <u>5887</u>	w/Clock No. <u>14389</u>
(E) Second Initial Flow Pressure <u>39</u>	PSI	Ak1 Recorder No. _____	Range _____
(F) Second Final Flow Pressure <u>49</u>	PSI	@ (depth) _____	w/Clock No. _____
(G) Final Shut-In Pressure <u>69</u>	PSI	Initial Opening <u>30</u>	Test <u>7</u> <u>900</u>
(H) Final Hydrostatic Mud <u>2809</u>	PSI	Initial Shut-in <u>45</u>	Jars <input checked="" type="checkbox"/> <u>200</u>

Final Flow <u>60</u>	Safety Joint <input checked="" type="checkbox"/> <u>50</u>
Final Shut-in <u>90</u>	Straddle _____
	Circ. Sub <input checked="" type="checkbox"/> <u>200</u>
	Sampler <input checked="" type="checkbox"/> <u>200</u>
	Extra Packer _____
	Other _____

Approved By Paul F. Bodowic
 Our Representative R. Collins

CONFIDENTIAL

TRILOBITE TESTING, L.L.C.

P.O. Box 362 • Hays, Kansas 67601

Drill-Stem Test Data

ORIGINAL

Well Name FEIERTAG #1-7 Test No. 8 Date 6/13/94
 Company MURFIN DRILLING CO INC/CANYON ENERGY Zone CHESTER
 Address 250 N WATER SWT #300 WICHITA KS 67202 Elevation 2754
 Co. Rep./Geo. PAUL GODOWIC Cont. MURFIN DRLG RIG #21 Est. Ft. of Pay 8
 Location: Sec. 7 Twp. 33S Rge. 30W Co. MEADE State KS

Interval Tested 5881-5900 Drill Pipe Size 4.5" XH
 Anchor Length 19 Wt. Pipe I.D. - 2.7 Ft. Run _____
 Top Packer Depth 5876 Drill Collar - 2.25 Ft. Run 556
 Bottom Packer Depth 5881 Mud Wt. 9.2 lb/Gal.
 Total Depth 5900 Viscosity 51 Filtrate 8.0

Tool Open @ 12:25AM Initial Blow GOOD BLOW - BOTTOM OF BUCKET IN 5 MINUTES
NO BLOW BACK

Final Blow WEAK BLOW BUILT TO 1 1/2" THROUGHOUT

Recovery - Total Feet 10 Flush Tool? NO

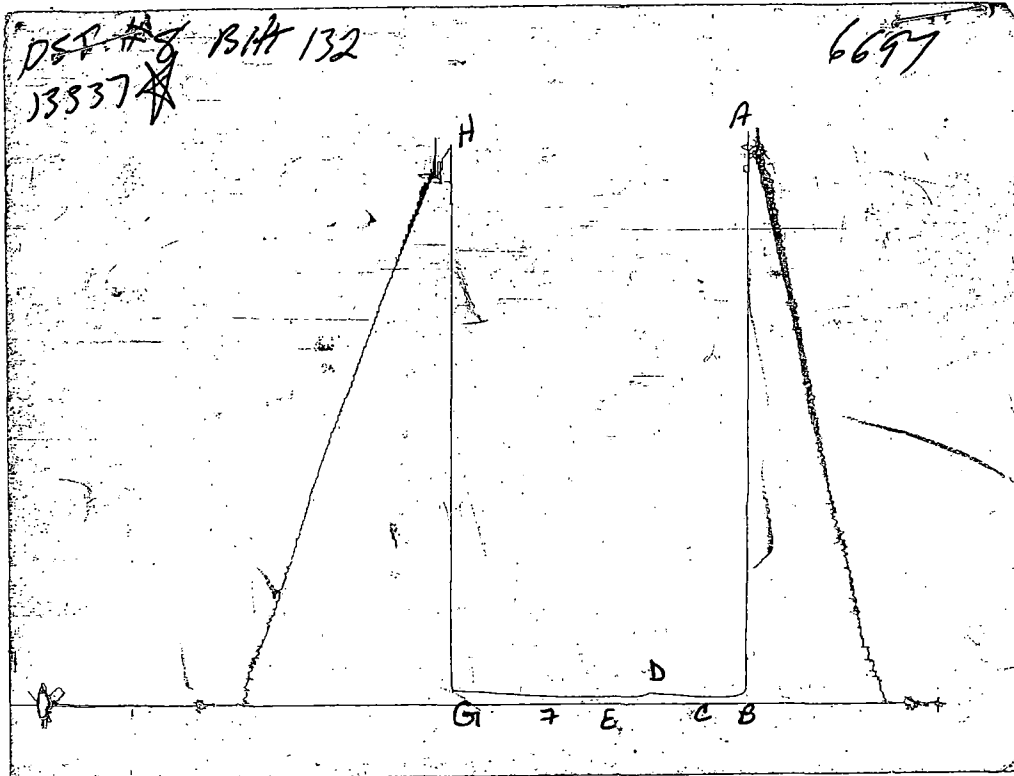
Rec. 10 Feet of DRILLING MUD
 Rec. _____ Feet of WITH SOME SPOTS OF OIL ON TOP OF TOOL
 Rec. _____ Feet of RELEASED
 Rec. _____ Feet of _____
 Rec. _____ Feet of JUL 2 6 1995

ncc
JUN 23
CONFIDENTIAL

BHT 132 °F Gravity FROM CONFIDENTIAL °F Corrected Gravity _____ °API
 RW _____ @ _____ °F Chlorides _____ ppm Recovery Chlorides 3000 ppm System

(A) Initial Hydrostatic Mud 2955.0 PSI AK1 Recorder No. 13337 Range 3975
 (B) First Initial Flow Pressure 44.5 PSI @ (depth) 5884 w / Clock No. 26191
 (C) First Final Flow Pressure 44.5 PSI AK1 Recorder No. 10333 Range 4050
 (D) Initial Shut-in Pressure 64.2 PSI @ (depth) 5887 w / Clock No. 14389
 (E) Second Initial Flow Pressure 46.5 PSI AK1 Recorder No. _____ Range _____
 (F) Second Final Flow Pressure 51.4 PSI @ (depth) _____ w / Clock No. _____
 (G) Final Shut-in Pressure 79.1 PSI Initial Opening 30 Final Flow 60
 (H) Final Hydrostatic Mud 2886.5 PSI Initial Shut-in 45 Final Shut-in 90

Our Representative ROBERT COLLINS



This is an actual photograph of recorder chart

RCC

JUN 23

CONFIDENTIAL

	FIELD READING	OFFICE READING
(A) INITIAL HYDROSTATIC MUD	2838	2955
(B) FIRST INITIAL FLOW PRESSURE	39	44.5
(C) FIRST FINAL FLOW PRESSURE	49	44.5
(D) INITIAL CLOSED-IN PRESSURE	59	64.2
(E) SECOND INITIAL FLOW PRESSURE	39	46.5
(F) SECOND FINAL FLOW PRESSURE	49	51.4
(G) FINAL CLOSED-IN PRESSURE	69	79.1
(H) FINAL HYDROSTATIC MUD	2809	2886.5

FLUID SAMPLER DATA

ORIGINAL

Ticket No.: 6697 Date: 6/13/94
 Company: MURFIN DRILLING CO INC/CANYON ENERGY
 Lease: FEIERTAG #1-7 Test No.: 8
 County: MEADE Sec.: 7 Twp.: 33S Rng.: 30W

SAMPLER RECOVERY

Gas
 Oil
 Mud 4000
 Water
 Other
 Pressure
 TOTAL 4000

PIT MUD ANALYSIS

Chlorides 3000
 Resistivity ohms@ F
 Viscosity 51
 Mud Wt. 9.2
 Filtrate 8.0
 Other

NCC
 JUN 23
 CONFIDENTIAL

SAMPLER ANALYSIS

Resistivity ohms@ F
 Chlorides ppm.
 Gravity corrected @60F

PIPE RECOVERY

TOP
 Resistivity ohms@ F
 Chlorides ppm
 MIDDLE
 Resistivity ohms@ F
 Chlorides ppm
 BOTTOM
 Resistivity ohms@ F
 Chlorides ppm

RELEASED
 JUL 26 1995
 FROM CONFIDENTIAL

TRILOBITE TESTING L.L.C.

P.O. Box 362 - Hays, Kansas 67601

ORIGINAL

FLUID SAMPLER DATA

Ticket No. 6697 Date 6-13-99
Company Name MDC
Lease Ferretas 1-7 Test No. 8
County Meado ks Sec. 7 Twp. 33 Rng. 30

SAMPLER RECOVERY

Gas _____ ML
Oil _____ ML
Mud 4000 ML
Water _____ ML
Other _____ ML
Pressure PSI
Total 4000 ML

PIT MUD ANALYSIS

Chlorides 3,000 ppm.
Resistivity _____ ohms @ _____ F
Viscosity 51
Mud Weight 9.0 n/c
Filtrate 8.0 JUN 23
Other CCM #3 **CONFIDENTIAL**

SAMPLER ANALYSIS

Resistivity _____ ohms @ _____ F
Chlorides _____ ppm.
Gravity _____ corrected @ 60 F

PIPE RECOVERY

TOP
Resistivity _____ ohms @ _____ F
Chlorides _____ ppm.
MIDDLE
Resistivity _____ ohms @ _____ F
Chlorides _____ ppm.
BOTTOM
Resistivity _____ ohms @ _____ F
Chlorides _____ ppm.

RELEASED

JUL 26 1995

FROM CONFIDENTIAL

TRILOBITE TESTING L.L.C.

P.O. Box 362 • Hays, Kansas 67601

ORIGINAL

Test Ticket CONFIDENTIAL No 6697

Well Name & No. Feiertag 117 Test No. 8 Date 6-13-94
 Company MPC Zone Tested Chester
 Address Wichita ks 67202 Elevation 2754 KB
 Co. Rep./Geo. Paul Cadowne Cont. Mur Em 21 Est. Ft. of Pay 8
 Location: Sec. 7 Twp. 33 Rge. 30 Co. Meade State ks
 No. of Copies _____ Distribution Sheet _____ Yes No Turnkey _____ Yes No _____ Evaluation _____

Interval Tested 5881-5900 Drill Pipe Size 4 1/2 x 11
 Anchor Length 19 Top Choke — 1" _____ Bottom Choke — 3/4" _____
 Top Packer Depth 5876 Hole Size — 7 7/8" _____ Rubber Size — 6 3/4" _____
 Bottom Packer Depth 5881 Wt. Pipe I.D. — 2.7 Ft. Run _____
 Total Depth 5900 Drill Collar — 2.25 Ft. Run 556 x 11
 Mud Wt. 9.2 lb/gal. Viscosity 51 Filtrate 8.0
 Tool Open @ 12:25 AM Initial Blow Good blow bottom of bucket in 5 min
no blow back
 Final Blow Weak blow build to 1 1/2 through **RELEASED** NO
JUN 23

Recovery — Total Feet 10 Feet of Gas In Pipe _____ **JUL 26 1995** **CONFIDENTIAL**

Rec.	Feet Of	% gas	% oil	% water	% mud
<u>10</u>	<u>DRIS Mud</u>			<u>100</u>	
	<u>w/lt some spots</u>				
	<u>of oil on top of tool</u>				

BHT 132 °F Gravity _____ °API @ _____ °F Corrected Gravity _____ °API

RW _____ @ _____ °F Chlorides _____ ppm Recovery Chlorides 3000 ppm System

(A) Initial Hydrostatic Mud 2838 PSI Ak1 Recorder No. 13337 Range 3975
 (B) First Initial Flow Pressure 39 PSI @ (depth) 5884 w/Clock No. 26191
 (C) First Final Flow Pressure 49 PSI AK1 Recorder No. 10333 Range 4050
 (D) Initial Shut-in Pressure 59 PSI @ (depth) 5887 w/Clock No. 14389
 (E) Second Initial Flow Pressure 39 PSI AK1 Recorder No. _____ Range _____
 (F) Second Final Flow Pressure 49 PSI @ (depth) _____ w/Clock No. _____
 (G) Final Shut-in Pressure 69 PSI Initial Opening 30 Test 7 900
 (H) Final Hydrostatic Mud 2809 PSI Initial Shut-in 45 Jars X 200

Final Flow 60 Safety Joint X 50
 Final Shut-in 90 Straddle _____
 Circ. Sub KAIC
 Sampler X 200
 Extra Packer _____
 Other _____

Approved By Paul F. Adde
 Our Representative R. Collins

ORIGINAL

Phone 913-483-2627, Russell, KS
Phone 316-793-5861, Great Bend, KS

Phone 913-625-5516, Hays, KS
Phone 913-672-3471, Oakley, KS

Phone 316-886-5926, Medicine Lodge, KS
Phone 913-798-3843, Ness City, KS

ALLIED CEMENTING CO., INC.

Home Office P. O. Box 31

Russell, Kansas 67665

7644
CONFIDENTIAL

new

5-29-94

Date	5-30-94	Sec.	7	Twp.	33	Range	30	Called Out	8:30 PM	On Location	12:45 AM	Job Start	5:45 AM	Finish	7:00 AM
Lease	Feiertag	Well No.	1-7	Location	Plains	45-1W-125-6W		County	Meade	State	Kan				
Contractor	MURFIN Drilling Co. #21														
Type Job	SURFACE														
Hole Size	12 1/4	T.D.	1530'												
Csg.	8 5/8	Depth	1528'												
Tbg. Size		Depth													
Drill Pipe		Depth													
Tool		Depth													
Cement Left in Csg.	41'	Shoe Joint	41.77'												
Press Max.		Minimum													
Meas Line		Displace	✓ 94 3/4												
Perf.															

Owner Same
To Allied Cementing Co., Inc.
You are hereby requested to rent cementing equipment and furnish cementer and helper to assist owner or contractor to do work as listed.

Charge To MURFIN Drilling Co.
Street
City State
The above was done to satisfaction and supervision of owner agent or contractor.

Purchase Order No.
X *[Signature]*
CEMENT

EQUIPMENT

Pumptrk	No. 300	Cementer	Walt
		Helper	Terry
Pumptrk	No.	Cementer	
		Helper	
Bulktrk	303	Driver	Wayne
Bulktrk	309	Driver	Robert

Amount Ordered 150 SKS COM, 3% CC - 2% bel - 1/4 lbs ^{FLO} seal
Consisting of 550 SKS 2 ltr, 3% CC 1/4 lbs ^{FLO} seal

Common
Poz. Mix RELEASED
Gel.
Chloride IIII 2 6 1995
Quickset

FROM CONFIDENTIAL

Handling	1.00 per SK	Sales Tax	
Mileage	.40 per SK/mile	Sub Total	
		Total	

DEPTH of Job

Reference:	Pumptruck	
	8 5/8 Rubber Plus	
	2.25 per mile	
	Sub Total	
	Tax	
	Total	

Remarks: Cement Die Circ

Floating Equipment 8 5/8
1 - Regular Guide Shoe
1 - AFU insert
1 - Basket
3 - Centralizers

NOC

JUN 23

CONFIDENTIAL

Phone 913-483-2627, Russell, KS
 Phone 316-793-5861, Great Bend, KS

Phone 913-625-5516, Hays, KS
 Phone 913-672-3471, Oakley, KS

Phone 316-886-5926, Medicine Lodge, KS
 Phone 913-798-3843, Ness City, KS

ALLIED CEMENTING CO., INC. 0007662

Home Office P. O. Box 31

Russell, Kansas 67665

CONFIDENTIAL

new

Date	6-15-94	Sec.	7	Twp.	33	Range	30	Called Out	3:00 PM	On Location	8:15 AM	Job Start	10:30 pm	Finish	1:15 AM
Lease	Foerter	Well No.	1-7	Location	Plains	45-14-1/2S-14W		County	Meade	State	Kan				
Contractor	MurFin Dels Co #24 ^{W.D. 9} 31														
Type Job	PTA														
Hole Size	7 7/8			T.D.	5960'										
Csg.				Depth											
Tbg. Size				Depth											
Drill Pipe				Depth											
Tool				Depth											
Cement Left in Csg.				Shoe Joint											
Press Max.				Minimum											
Meas Line				Displace											
Perf.															

EQUIPMENT

Pumptrk	No.	Cementer	Walt
	191	Helper	R.G.
Pumptrk	No.	Cementer	
		Helper	
Bulktrk	69	Driver	Bill
		Driver	

DEPTH of Job

Reference:	Pumptruck	
	8 5/8 D.H. Plus	
	2 25 per mile	
		Sub Total
		Tax
		Total

Remarks:

50	SKS	2	1560'
25	SKS	2	600'
10	SKS	2	40'
15	SKS	in	R.H.
10	SKS	in	W.H.

Owner
 To Allied Cementing Co., Inc.
 You are hereby requested to rent cementing equipment and furnish cementer and helper to assist owner or contractor to do work as listed.

Charge To MurFin Dels Co.
Street
City **State**
 The above was done to satisfaction and supervision of owner agent or contractor.

Purchase Order No.
 X *[Signature]*
CEMENT

Amount Ordered 110 SKS 6 1/4" 2002, 6 1/2" 601 1/4 1/2 500

Consisting of
 Common
 Poz. Mix
 Gel.
 Chloride
 Quickset

Handling 1.00 per SK
Mileage 4¢ per SK mile
Sales Tax
Sub Total
Total

Floating Equipment

RELEASED

KCC

JUL 26 1995

JUN 23

FROM CONFIDENTIAL CONFIDENTIAL

that you