

15-189-21840-0000

Catholic Protection Services  
Liberal, Kansas

ORIGINAL

3189

DATA SHEET

COMPANY MOBIL E+P JOB No. 80100370 DATE: 1-10-95  
 WELL: SHAFFER 1-3 PIPELINE:  
 LOCATION: SEC. 5 TWP. 33 RGE. 38 CO. STEVENS STATE KS  
 ANODE TYPE LIDA ONE FT: ROTARY 90 FT: CASING \_\_\_\_\_ FT.

DEEP GROUND BED LOGGING DATA

by:	DRILL. DEPTH LOG (FT)	ANODE TO			DRILL DEPTH LOG (FT)	ANODE TO			
		STRUCTURE		ANODES		STRUCTURE		ANODES	
		EXPLOR	FINAL			EXPLOR	FINAL		
		OHM	OHM	NO		OHM	OHM	NO	TOP DEPTH
	5				205				
	HOLE PLUG 10				210				3'-13'
	EARTH FILL 15				215				13'-30'
	20				220				
	25				225				
	HOLE PLUG 30	.250			230				30'-32'
	35	.260			235				
	40	.410			240				
	45	.180			245				
	50	.180			250				
	55	.390		3	255				
	60	.380			260				
	65	.390		2	265				
	70	.280			270				
	75	.210			275				
	80	.330			280				
	85	.450			285				
	90	.440		1	290				
	95				295				
	100				300				
	105				305				
	110				310				
	115				315				
	120				320				
	125				325				
	130				330				
	135				335				
	140				340				
	145				345				
	150				350				
	155				355				
	160				360				
	165				365				
	170				370				
	175				375				
	180				380				
	185				385				
	190				390				
	195				395				
	200				400				

PIT CLOSED 1-10-95 HOLE PLUG SET 1-10-95

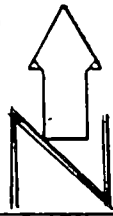
GROUND BED RESISTANCE: (1) VOLTS \_\_\_\_\_ ÷ AMPS \_\_\_\_\_ = \_\_\_\_\_ OHMS (2) VIBROGROUND \_\_\_\_\_ OHMS

SHAPE 13 5-13-38 Stevens  
307 PSL 3927EL  
Elec? y Crop Wood st

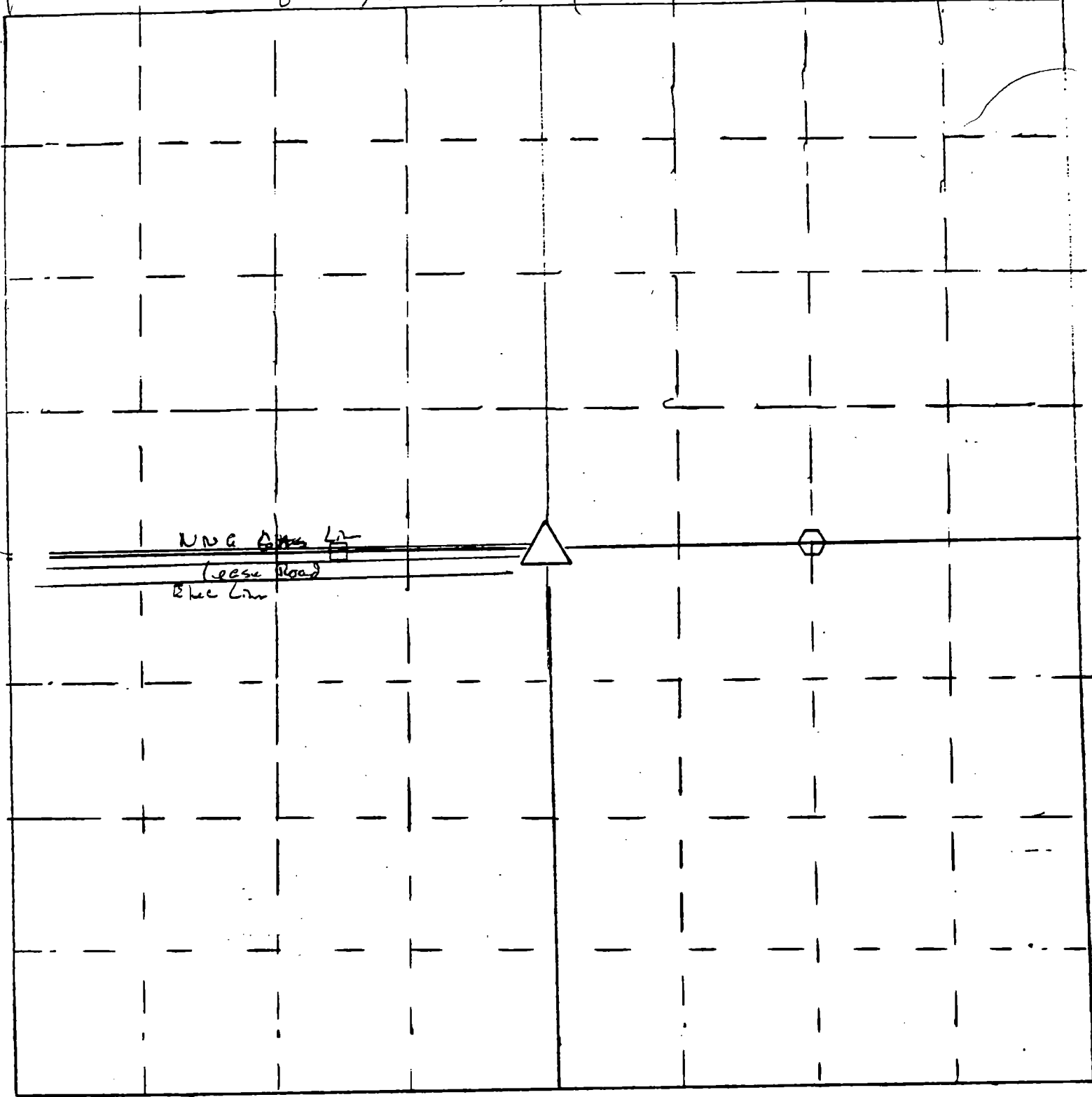
0-20 Brown clay 15-189-21840

20-40 BROWN SAND  
40-80 SAND clay mix  
80-90-SAND

ORIGINAL



1095  
24



- △ = gas well location
- = cathodic deep well location

Scale = 1" = 50'  
□ = Meter house