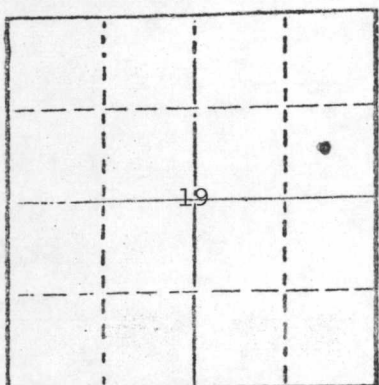


STATE OF KANSAS  
STATE CORPORATION COMMISSION

WELL PLUGGING RECORD

Give All Information Completely  
Make Required Affidavit  
Mail or Deliver Report to  
Conservation Division  
State Corporation Comm.  
245 North Water  
Wichita, KS 67202

Seward County, Sec. 19 Twp. 33S Rge. 34  W  
Location as "NE/CNW 1/4 SW 1/4" or footage from lines  
SE/4 NE/4  
Lease Owner ANADARKO PRODUCTION COMPANY  
Lease Name GUTTRIDGE C Well No. 1  
Office Address P. O. Box 351, Libera  
Character of Well (Completed as Oil, Gas or Dry Hole)  
Dry Hole  
Date Well completed 4/4 1978  
Application for plugging filed verbally 4/4 1978  
Application for plugging approved verbally 4/4 1978  
Plugging commenced 4/4 1978  
Plugging completed 4/4 1978  
Reason for abandonment of well or producing formation  
Dry Hole  
If a producing well is abandoned, date of last production 19



Locate well correctly on above  
Section Plot

Was permission obtained from the Conservation Division or  
its agents before plugging was commenced?

Name of Conservation Agent who supervised plugging of this well Clarence Thomas  
Producing formation \_\_\_\_\_ Depth to top \_\_\_\_\_ Bottom \_\_\_\_\_ Total Depth of Well 6518'  
Show depth and thickness of all water, oil and gas formations.

OIL, GAS OR WATER RECORDS

CASING RECORD

FORMATION	CONTENT	FROM	TO	SIZE	PUT IN	PULLED OUT
				8-5/8"	1710'	None
				4-1/2"	4400'	None

Describe in detail the manner in which the well was plugged, indicating where the mud fluid  
was placed and the method or methods used in introducing it into the hold. If cement or other  
plugs were used, state the character of same and depth placed, from \_\_\_\_\_ feet to  
\_\_\_\_\_ feet for each plug set.

Spotted 50 sxs cmt 6300'.  
Spotted 50 sxs cmt 4600'.  
Pumped 200 sxs Common, filled 4-1/2" csg 3028' to surface.

RECEIVED  
STATE CORPORATION COMMISSION  
MAY 26 1978

(If additional description is necessary, use BACK of this sheet)  
Name of Plugging Contractor Halliburton, P. O. Drawer 1431, Duncan, Okla. 73533

STATE OF KANSAS COUNTY OF SEWARD, ss.  
Paul Campbell (employee of owner) or (XXXXXXXXXXXXXXXXXX)  
of the above-described well, being first duly sworn on oath, says: That I have knowledge of  
the facts, statements, and matters herein contained and the log of the above-described well  
as filed and that the same are true and correct. So help me God.

LEONA FERNE CORNELSEN  
STATE NOTARY PUBLIC  
Seward County, Kansas  
My Appointment Expires  
SUBSCRIBED AND SWORN TO before me this 24th day of May, 1978

(Signature) *Paul Campbell*  
Paul Campbell, Division Production Manager  
Box 351, Liberal, Ks. 67901 (Address)  
*Leona Ferne Cornelisen*  
Notary Public.

My commission expires June 23, 1980

**KANSAS DRILLERS LOG**

S. 19 T. 33S R. 34  $\frac{E}{W}$

API No. 15 — 175 — 20,345  
 County Number

Loc. C SE NE

County SEWARD

Operator  
 ANADARKO PRODUCTION COMPANY

Address  
 P. O. BOX 351, LIBERAL, KANSAS 67901

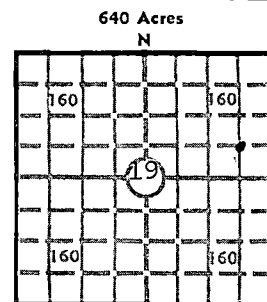
Well No. 1 Lease Name GUTTRIDGE "C"

Footage Location  
 1980 feet from (N) line 660 feet from (E) (W) line

Principal Contractor Lohmann-Johnson Drlg Co., Inc. Geologist Joe Blair

Spud Date February 10, 1978 Total Depth 6518' P.B.T.D. 3042'

Date Completed April 3, 1978 Oil Purchaser



Elev.: Gr. 2941.8'

DF KB

**CASING RECORD**

Report of all strings set— surface, intermediate, production, etc.

Purpose of string	Size hole drilled	Size casing set (in O.D.)	Weight lbs/ft.	Setting depth	Type cement	Sacks	Type and percent additives
Surface	12-1/4"	8-5/8"	24#	1710'	Pozmix Common	600 200	4% gel, 2% cc 2% cc
Production	7-7/8"	4-1/2"	10.5#	4400'	Lite Wate Pozmix	350 400	10# gil/sx 5% CFR-2, 1/4 Tuff Fiber/sx

**LINER RECORD**

**PERFORATION RECORD**

Top, ft.	Bottom, ft.	Sacks cement	Shots per ft.	Size & type	Depth interval
			2		4285-65'
			2		3150-60'
			4		3100-05 & 3092-96'
			2		3073-81'
			2		3046-63'
			2		3016-28 & 2986-96'

**ACID, FRACTURE, SHOT, CEMENT SQUEEZE RECORD**

Amount and kind of material used	Depth interval treated
Acidized perms 4258-65 w/1000 gals 15% MCA, Acidized 3150-60 w/1500 gals 15%. Acidized perms 3073-81 w/800 gals 15%, acidized perms 3046-63 w/1500 gals 15%. Acidized perms 3016-28 & 2986-96 w/2000 gals 15% HCL. Perfs squeezed: 3100-05', 3092-96', 3073-81', 3046-63.	

**INITIAL PRODUCTION**

MAY 26 1978

Date of first production	Producing method (flowing, pumping, gas lift, etc.)				
RATE OF PRODUCTION PER 24 HOURS	Oil	Gas	Water	Gas-oil ratio	CFPB
	bbls.	MCF	bbls.		
Disposition of gas (vented, used on lease or sold)			Producing interval (s)		

INSTRUCTIONS: As provided in KCC Rule 82-2-125, within 90 days after completion of a well, one completed copy of this Drillers Log shall be transmitted to the State Geological Survey of Kansas, 4150 Monroe Street, Wichita, Kansas 67209. Copies of this form are available from the Conservation Division, State Corporation Commission, 3830 So. Meridian (P.O. Box 17027), Wichita, Kansas 66217. Phone AC 316-522-2206. If confidential custody is desired, please note Rule 82-2-125. Drillers Logs will be on open file in the Oil and Gas Division, State Geological Survey of Kansas, Lawrence, Kansas 66044.

Operator  
ANADARKO PRODUCTION COMPANY

DESIGNATE TYPE OF COMP.: OIL, GAS,  
DRY HOLE, SWDW, ETC.:  
DRY HOLE

Well No. 1 Lease Name GUTTRIDGE "C"

S 19 T 33SR 34 <sup>E</sup>/<sub>W</sub>

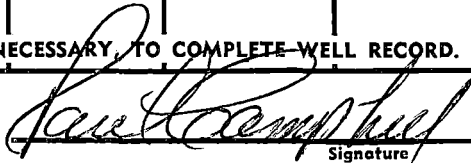
**WELL LOG**

Show all important zones of porosity and contents thereof; cored intervals, and all drill-stem tests, including depth interval tested, cushion used, time tool open, flowing and shut-in pressures, and recoveries.

SHOW GEOLOGICAL MARKERS, LOGS RUN, OR OTHER DESCRIPTIVE INFORMATION.

FORMATION DESCRIPTION, CONTENTS, ETC.	TOP	BOTTOM	NAME	DEPTH
Sand	0'	40'		
Sand	40'	1056'		
Redbed	1056'	1151'		
Glorietta	1151'	1372'		
Redbed	1372'	1550'		
Redbed & Dolo	1550'	1711'		
Redbed	1711'	2478'		
Redbed & Shale	2478'	2694'		
Lime & Shale	2694'	6518'		
TOTAL DEPTH		6518'		
PBTD		3042'		
DST #1 6265-6300 B/Chester op on PF w/wk blow, 30-60-45-120 w/wk blow for 20 min, died, no blo, 2nd open rec 100' DM, NS, IF 44-52, ISIP 52, FFP 52-71, FSP 209, HP 3087-3061.				
Core#1 6243-6300 (57') rec 52'=16' shale, 36' sd & lmy sd.				

USE ADDITIONAL SHEETS, IF NECESSARY, TO COMPLETE WELL RECORD.

Date Received	
	Signature
	Paul Campbell, Division Production Manager
	Title
	May 23, 1978
	Date