

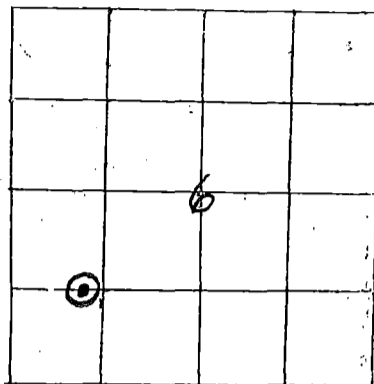
STATE OF KANSAS
STATE CORPORATION COMMISSION
200 Colorado Derby Bldg.
Wichita, Kansas 67202

RECEIVED
STATE CORPORATION COMMISSION
Rev. 12-28-81
APR 26 1982
RECEIVED
CONSERVATION DIVISION
Wichita, Kansas

WELL PLUGGING RECORD

Give All Information Completely
Make Required Affidavit

COUNTY Meade SEC. 6 TWP. 33S RGE. 30W E/W
Location as in quarters or footage from lines:
150' W of C - SW



Lease Owner Irex Corporation
Lease Name Dimmett Well No. 1-6
Office Address 1670 Broadway Suite 3301 Denver, Colorado
Character of Well (Completed as Oil, Gas or Dry Hole): Dry Hole
Date Well Completed 3-20-82
Application for plugging filed 1-15-82
Plugging commenced 3-17-82
Plugging completed 3-20-82
Reason for abandonment of well or producing formation Dry Hole

Locate Well
correctly on above
Section Platt.

Was permission obtained from the Conservation Division or it's
Agent's before plugging was commenced? Yes

Name of Conservation Agent who supervised plugging of this well Paul Luthi

Producing formation N/A - Dry Hole Depth to top _____ bottom T.D. 6200

Show depth and thickness of all water, oil and gas formations.

OIL, GAS OR WATER RECORDS

Casing Record

Formation	Content	From	To	Size	Put in	Pulled Out
				8 5/8	1519	none
				4 1/2	5972	3007

Describe in detail the manner in which the well was plugged, indicating where the mud fluid was placed and the method or methods used in introducing it into the hold. If cement or other plugs were used, state the character of same and depth placed, from _____ feet to _____ feet for each plug set.

Pump 25 sks. of cement & 2 sks. of hull's @ 5636 to 5200
Pump 35 sks. of cement @ 1515 to 1415
Put 10 sks. of cement @ 40 to 0
Cut off & Cap 8 5/8 3' below ground level.

(If additional description is necessary, use BACK of this sheet)

Name of Plugging Contractor Sargents Casing Pulling Service Box 506 Liberal, Kansas 67901

STATE OF Colorado COUNTY OF Denver, ss.

IREX Corp. ~~(employee of owner)~~ or ~~(owner or operator)~~ of the above-described well, being first duly sworn on oath, says: That I have knowledge of the facts, statements, and matters herein contained and the log of the above-described well as filed and that the same are true and correct. So help me God.

(Signature) DW Brown, V.P., Operations
1670 Broadway, Suite 3301, Denver, CO
(Address)

SUBSCRIBED AND SWORN TO before me this 27th day of April, 19 82

My Commission expires: June 9, 1985

Mary J. Warren
Notary Public.

COUNTY MEADE FIELD WILDCAT LOCATION SEC. 6-33S-30W WELL DEMMITT NO. 1-6 COMPANY IREX CORPORATION

COMPANY IREX CORPORATION

RECEIVED
DEC 22 1980
IREX Corp.

WELL DEMMITT NO. 1-6

FIELD WILDCAT

COUNTY MEADE STATE KANSAS

LOCATION 150' W OF C-SW

Other Services:
CNL/FDC-GR

API SERIAL NO.	SEC.	TWP	RANGE
	6	33S	30W

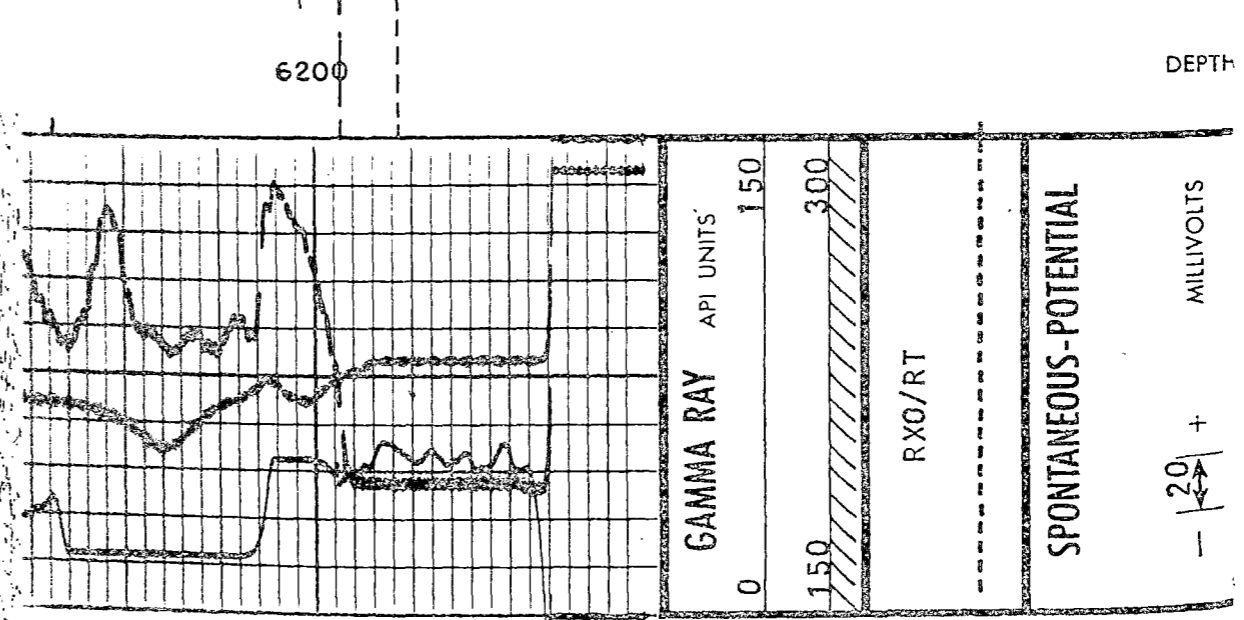
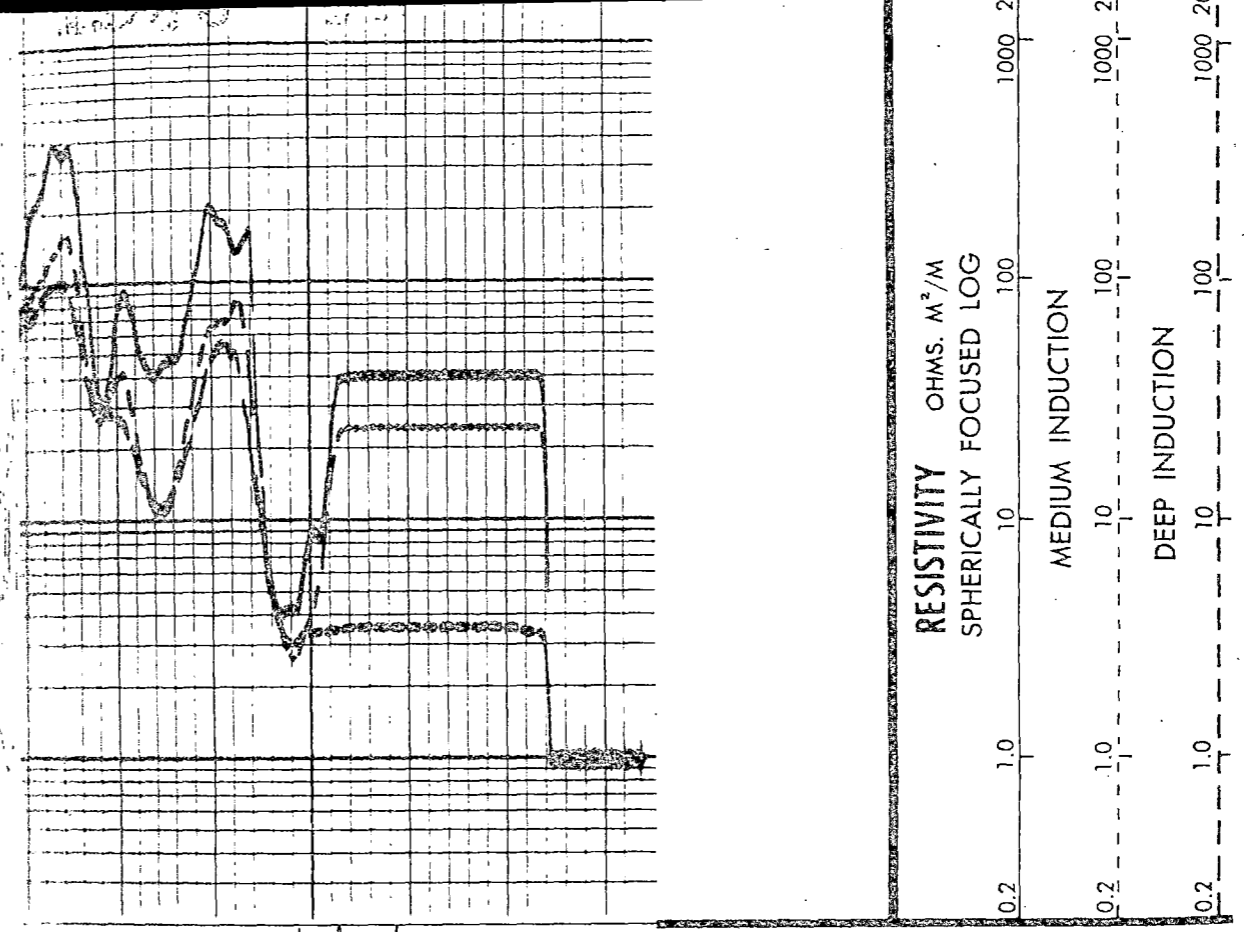
Permanent Datum: GROUND LEVEL; Elev.: 2754

Log Measured From K.B. 10 Ft. Above Perm. Datum

Drilling Measured From K.B.

Elev.: K.B. 2764
D.F.
G.L. 2754

Date	11-6-80			
Run No.	ONE			
Depth-Driller	6200			
Depth-Logger (Schl.)	6209			
Btm. Log Interval	6203			
Top Log Interval	1520			
Casing-Driller	8 5/8 @ 1519	@	@	@
Casing-Logger	1520			
Bit Size	7 7/8			
Type Fluid in Hole	FGM			
Dens.	9.2	Visc.	47	
pH	10	Fluid Loss	7.6 ml	
Source of Sample	MUD PIT			
Rm @ Meas. Temp.	1.07 @ 67 °F	@	°F	
Rmf @ Meas. Temp.	.76 @ 69 °F	@	°F	
Rmc @ Meas. Temp.	@ °F	@	°F	
Source: Rmf	Rmc	M		
Rm @ BHT	.58 @ 128F	@	°F	
Circulation Stopped	0230 11-6			
Logger on Bottom	0730 11-6			
Max. Rec. Temp.	128 °F		°F	
Equip.	7780 COLBY			
Recorded By	POOLE			
Witnessed By Mr.	HARVEY			



RECEIVED
STATE CORPORATION COMMISSION
JAN 22 1982
CONSERVATION DIVISION
Wichita, Kansas

15-119-20423-0000