

SIDE ONE

STATE CORPORATION COMMISSION OF KANSAS
OIL & GAS CONSERVATION DIVISION
WELL COMPLETION OR RECOMPLETION FORM
ACO-1 WELL HISTORY
DESCRIPTION OF WELL AND LEASE

API NO. 15-175-21,042-0000
County Seward
C. NW SW Sec. 34 Twp. 33S Rge. 33 East
X West

Operator: License # 5598
Name APX Corporation
Address P. O. Box 351
City/State/Zip Liberal, Kansas 67905-0351

1980 Ft North from Southeast Corner of Section
4620 Ft West from Southeast Corner of Section
(Note: Locate well in section plat below)

Purchaser Anticipated: Panhandle Eastern
Pipe Line Co.

Lease Name Priefert "C" Well # 1H
Field Name Hugoton

Operator Contact Person M. L. Pease
Phone (316) 624-6253

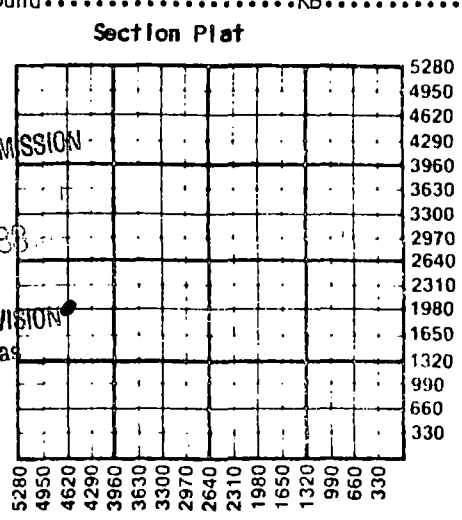
Producing Formation Chase
Elevation: Ground 2834.7 KB

Contractor: License # 5842
Name Gabbert-Jones, Inc.

Wellsite Geologist Keith Brown
Phone NA

Designate Type of Completion
X New Well Re-Entry Workover
Oil SWD Temp Abd
Gas Inj X Delayed Comp.
Dry Other (Core, Water Supply etc.)
If OWNO: old well Info as follows:
Operator
Well Name
Comp. Date Old Total Depth

RECEIVED
STATE CORPORATION COMMISSION
DEC 21 1988
CONSERVATION DIVISION
Wichita, Kansas



WATER SUPPLY INFORMATION
Disposition of Produced Water: Disposal
Docket # Repressuring

Questions on this portion of the ACO-1 call:
Water Resources Board (913) 296-3717
Source of Water:
Division of Water Resources Permit #
Groundwater Ft North from Southeast Corner
(Well) Ft West from Southeast Corner of
Sec Twp Rge East West
Surface Water Ft North from Southeast Corner
(Stream, pond etc) Ft West from Southeast Corner
Sec Twp Rge East West
X Other (explain) Contractor provided water
(purchased from city, R.W.D. #)

WELL HISTORY
Drilling Method:
X Mud Rotary Air Rotary Cable
9/7/88 9/20/88 NA
Spud Date Date Reached TD Completion Date
6520 3060
Total Depth PBD
Amount of Surface Pipe Set and Cemented at 1564 feet
Multiple Stage Cementing Collar Used? Yes X No
If yes, show depth set feet
If alternate 2 completion, cement circulated
from feet depth to w/ SX cmt
Cement Company Name Western Co.
Invoice # 87226
at I

INSTRUCTIONS: This form shall be completed in triplicate and filed with the Kansas Corporation Commission, 200 Colorado Derby Building, Wichita, Kansas 67202, within 120 days of the spud date of any well. Rule 82-3-130, 82-3-107 and 82-3-106 apply. Information on side two of this form will be held confidential for a period of 12 months if requested in writing and submitted with the form. See rule 82-3-107 for confidentiality in excess of 12 months. One copy of all wireline logs and drillers time log shall be attached with this form. Submit CP-4 form with all plugged wells. Submit CP-111 form with all temporarily abandoned wells.

All requirements of the statutes, rules and regulations promulgated to regulate the oil and gas industry have been fully complied with and the statements herein are complete and correct to the best of my knowledge.

Signature M. L. Pease
Title Division Production Manager Date 12/19/88

Subscribed and sworn to before me this 19th day of Dec.
1988
Notary Public Glenn S. Salley

Date Commission Expires
GLENN S. SALLEY
NOTARY PUBLIC
STATE OF KANSAS
MY APPT. EXPIRES 1-6-91

K.C.C. OFFICE USE ONLY
F Letter of Confidentiality Attached
C Wireline Log Received
C Drillers Timelog Received
Distribution
KCC SWD/Rep NGPA
KGS Plug Other
(Specify)
12-21-88
Form ACO-1 (5-86)

Sec 34 Twp. 33S Rge. 33W

Operator Name APX Corporation Lease Name Priefert "C" Well # 1H

Sec. 34 Twp. 33S Rge. 33 East West County Seward

WELL LOG

INSTRUCTIONS: Show important tops and base of formations penetrated. Detail all cores. Report all drill stem tests giving interval tested, time tool open and closed, flowing and shut-in pressures, whether shut-in pressure reached static level, hydrostatic pressures, bottom hole temperature, fluid recovery, and flow rates if gas to surface during test. Attach extra sheet if more space is needed. Attach copy of log.

Drill Stem Tests Taken Yes No
 Samples Sent to Geological Survey Yes No
 Cores Taken Yes No

Formation Description
 Log Sample

Name	Top	Bottom
Sand	0'	368'
Redbed	368	1420
Redbed, Anhy	1420	1570
Redbed	1570	2308
Redbed, Shale	2308	2950
Lime, Shale	2950	3595
Shale, Lime	3595	3835
Lime, Shale	3835	4350
Shale, Lime	4350	4518
Lime, Shale	4518	4826
Shale, Lime	4826	4990
Lime, Shale	4990	5156
Shale, Lime	5156	5280
Lime, Shale	5280	5845
Shale	5845	5950
Lime, Shale	5950	6205
Shale	6205	6315
Lime, Shale	6315	6425
Shale	6425	6520

CASING RECORD New Used
 Report all strings set-conductor, surface, intermediate, production, etc.

Purpose of String	Size Hole Drilled	Size Casing Set (in O.D.)	Weight Lbs/Ft.	Setting Depth	Type of Cement	#Sacks Used	Type and Percent Additives
Surface	12-1/4"	8-5/8"	24.0	1564	50/50 Poz Common	550	4% gel + 2% CC
Production	7-7/8"	4-1/2"	11.6	6067	65/35 Poz	75	6% gel + 1/2#/sxs
					50/50 Poz	200	10% salt + 1/4#/sxs

PERFORATION RECORD		Acid, Fracture, Shot, Cement Squeeze Record	
Shots Per Foot	Specify Footage of Each Interval Perforated	(Amount and Kind of Material Used)	Depth

TUBING RECORD Size NA Set At Packer at Liner Run Yes No

Date of First Production SI WO Comp Producing Method Flowing Pumping Gas Lift Other (explain).....

Estimated Production Per 24 Hours	Oil Bbls	Gas MCF	Water Bbls	Gas-Oil Ratio	Gravity

METHOD OF COMPLETION Production Interval

Disposition of gas: Vented Open Hole Perforation
 Sold Other (Specify) Delayed
 Used on Lease Dually Completed
 Commingled



DUPLICATE

INVOICE

The Western Company of North America

*** P.O. BOX 94480 TULSA, OKLAHOMA 74194

TO ANADARKO PRODUCTION
BOX 351
LIBERAL, KANSAS 67901

TERMS
NET CASH DUE ON OR
BEFORE 30 DAYS
AFTER DATE OF INVOICE

FEDERAL I.D. NO. C 75-0763484

INVOICE NO.
87226

PLEASE DISREGARD THIS INFORMATION
02800 12 25 15 1 20 9

DATE			OUR RECEIPT NO.	SERVICES FROM OUR STATION AT	OUR ENGINEER	SIGNED FOR YOU BY
MO.	DAY	YR.				
09	08	8	885196	FERRYTON CMT	ARRINGTON	GATLIN
FOR SERVICING WELL NAME				COUNTY	STATE	YOUR ORDER NO.
FERIFERT #C-1				SEWARD	KANSAS	93200

UNITS	CODE	DEPTH AND DESCRIPTION	UNIT PRICE	AMOUNT
10.0	K1005	MILEAGE CHARGE, PER UNIT, PER MILE		
10.0	K1025	MILEAGE AUTO/PICK-UP/TREATING VAN		
1.0	K2025	CEMENT PUMP TRUCK 1500-3000 FT		
3.0	K2105	ADDL. 4 HRS. OR FRACTION, PER PUMP		
814.8	M1005	SERVICE CHARGE LAND JOBS PER CU FT		
341.0	M2305	DELIVERY CHARGE PER TON MILE		
17.0	P0527	CALCIUM CHLORIDE-TEXAS PANHANDLE		
924.0	P2495	BENTONITE, PER LB.		
1.0	P3625	B-5/8 INCH RUBBER PLUG		
475.0	P402N	STANDARD CMT, PER SK HUGOTON, KS		
275.0	P422N	POZA CMT PER SK HUGOTON, KS		
		SUB TOTAL		

90000 AS PER AGREEMENT 5,290.12

2083-2041

FINAL APPROVAL	
AFE #	LOCATION
LIBERAL OPERATIONS RECEIVED	
SEP 20 1988	
APPROVED	IDC
DATE	TAXID
CODED BY	OPERATIONS

PAY THIS AMOUNT →

5,290.12

GABBERT-JONES
DRILLERS WELL LOG

PRIEFERT C-1
SEC. 34-33S-33W
SEWARD COUNTY, KS

Commenced: 9-7-88
Completed: 9-22-88
Operator: ANADARKO PETROLEUM CORPORATION

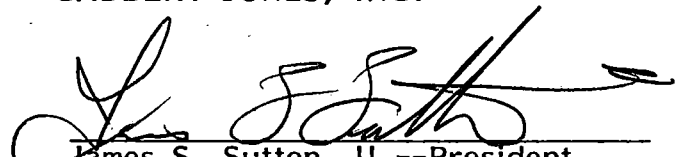
Depth		Formation	Remarks
From	To		
0	368	Sand	Ran 36 jts of 24# 8 5/8"
368	1420	Redbed	csg LD @ 1564' w/550 sks
1420	1570	Redbed-Anhy	Posmix 4% Gel - 2% CC
1570	2308	Redbed	200 sks Common - 2% CC
2308	2950	Redbed-Shale	PD @ 9:30 PM 9-8-88
2950	3595	Lime-Shale	1" to 50' w/100 sks Class. H
3595	3835	Shale-Lime	2% CC - CC @ 12:45 AM
3835	4350	Lime-Shale	9-9-88.
4350	4518	Shale-Lime	
4518	4826	Lime-Shale	Ran 148 jts of 11.6#
4826	4990	Shale-Lime	4 1/2" csg LD @ 6067' w/
4990	5156	Lime-Shale	75 sks 65/35 Posmix - 6%
5156	5280	Shale-Lime	Gel - 1/2# CF - 225 sks
5280	5845	Lime-Shale	50/50 Posmix - 10% Salt - 1/4#CF
5845	5950	Shale	5% Gilsonite.
5950	6205	Lime-Shale	PD @ 12:00 AM 9-22-88
6205	6315	Shale	RR @ 1:00 AM 9-22-88.
6315	6425	Lime-Shale	
6425	6520	Shale	

6520 TD

RECEIVED
STATE CORPORATION COMMISSION
DEC 21 1988
CONSERVATION DIVISION
Wichita, Kansas

State of Kansas)
County of Sedgwick) I, the undersigned, being duly sworn on oath, state
that the above Drillers ' Well Log is true and correct
to the best of my knowledge and belief and according
to the records of this office.

GABBERT-JONES, INC.


James S. Sutton, II --President

Subscribed & sworn to before me this
27th day of September 1988


Lola Lenore Costa

My Commission expires Nov. 21, 1988