

LEASE NAME Lawrence "M"

TYPE OR PRINT

NOTICE: Fill out completely
and return to Cons. Div.
office within 30 days.

WELL NUMBER 1

510 Ft. from N Section Line

810 Ft. from E Section Line

LEASE OPERATOR MARATHON OIL COMPANY

SEC. 3 TWP. 31S RGE. 10W (E) or (W)

ADDRESS P.O. Box 689, Oklahoma City, OK-73101-0689

COUNTY Barber

PHONE# (405) 720-7373 OPERATORS LICENSE NO. 5171

Date Well Completed 5-4-77

Character of Well SWD

Plugging Commenced 6-4-93

(Oil, Gas, O&A, SWD, Input, Water Supply Well)

Plugging Completed 6-9-93

The plugging proposal was approved on 6-4-93 (date)

by Steve (KCC District Agent's Name).

Is ACO-1 filled? YES If not, is well log attached? _____

Producing Formation na Depth to Top _____ Bottom _____ T.D. 4518

Show depth and thickness of all water, oil and gas formations.

OIL, GAS OR WATER RECORDS

CASING RECORD

Formation	Content	From	To	Size	Put In	Pulled out
				8 5/8	279	0
				5 1/2	4110	3514

Describe in detail the manner in which the well was plugged, indicating where the mud fluid was placed and the method or methods used in introducing it into the hole. If cement or other plug were used, state the character of same and depth placed, from ___ feet to ___ feet each set
CIBP @ 3900 Pump 20 sks. of cement from 3785 to 3650

Pump 50 sks. of cement from 600 to 500

Pump 40 sks. of cement from 300 to 200

Put 10 sks. of cement from 40 to 0 cut off & cap 8 5/8 4' below ground level

(If additional description is necessary, use BACK of this form.)

Name of Plugging Contractor Sargent's Casing Pulling Service License No. 6547

Address P.O. Box 506 Liberal, Kansas 67905-0506

RECEIVED
STATE CORPORATION COMMISSION

NAME OF PARTY RESPONSIBLE FOR PLUGGING FEES: Marathon Oil Company

STATE OF Oklahoma COUNTY OF Oklahoma, ss.

JUL 21 1993

Raymond J. Steppe, III

(Employee of Operator or Notary Public) or
Wichita, Kansas

above-described well, being first duly sworn on oath, says: that I have knowledge of the facts statements, and matters herein contained and the log of the above-described well as filed that the same are true and correct, so help me God.

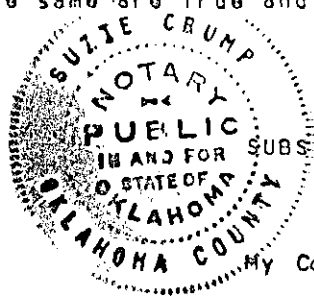
(Signature) Raymond J. Steppe III

(Address) P.O. Box 689, Okla. City, OK 73101

SUBSCRIBED AND SWORN TO before me this 16th day of July, 19 93

Suzie Crump
Notary Public

My Commission Expires: May 17, 1995



Alma Field

KANSAS DRILLERS LOG

API No. 15 — 007 — 20,474
County Number

Operator
Texas Oil & Gas Corp.

Address
200 W. Douglas, Suite 300, Wichita, Kansas 67202

Well No. 1 Lease Name Lawrence "M"

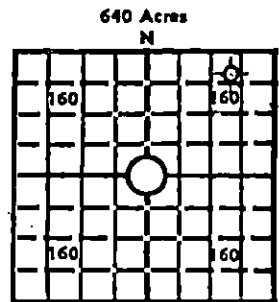
Footage Location
510 feet from (N) (S) line 810 feet from (E) (W) line

Principal Contractor Xplor Drilling Company Geologist High Plains Consulting Ltd.

Spud Date 1-23-77 Total Depth 4518' P.B.T.D. 4480'

Date Completed 5-4-77 Oil Purchaser N/A

S. 3 T. 31S R. 10 E W
Loc. 510' FNL & 810' FEL
County Barber



Locate well correctly
Elev.: Gr. 1724'
DF KB 1729'

CASING RECORD

Report of all strings set—surface, intermediate, production, etc.

Purpose of string	Size hole drilled	Size casing set (in O.D.)	Weight lbs/ft.	Setting depth	Type cement	Sacks	Type and percent additives
Surface	12-1/4"	8-5/8"	24#	279'	Common	250	2% Gel, 3% CaCl
Intermediate		5-1/2"	14#	4110'	Thixotropic	150	
Production		4"	11.34#	4504'	Common	50	2% Gel, 3% CaCl

LINER RECORD

PERFORATION RECORD

Top, ft.	Bottom, ft.	Sacks cement	Shots per ft.	Size & type	Depth interval
N/A	N/A	N/A			
TUBING RECORD			4	Deep Penet.	4434-37'
Size	Setting depth	Packer set at			
N/A	N/A	N/A			

ACID, FRACTURE, SHOT, CEMENT SQUEEZE RECORD

Amount and kind of material used	Depth interval treated
10,250 gal. acid; 7500# sand	4434-37'
RECEIVED KANSAS CORPORATION COMMISSION APR 29 1993 CONSERVATION DIVISION WICHITA, KS	

INITIAL PRODUCTION

Date of first production N/A	Producing method (flowing, pumping, gas lift, etc.) N/A
RATE OF PRODUCTION PER 24 HOURS	Oil N/A bbls. Gas N/A MCF Water N/A bbls. Gas-oil ratio N/A CFPB
Disposition of gas (vented, used on lease or sold) N/A	Producing interval(s) N/A

INSTRUCTIONS: As provided in KCC Rule 82-2-125, within 90 days after completion of a well, one completed copy of this Drillers Log shall be transmitted to the State Geological Survey of Kansas, 4150 Monroe Street, Wichita, Kansas 67209. Copies of this form are available from the Conservation Division, State Corporation Commission, 3830 So. Meridian (P.O. Box 17027), Wichita, Kansas 66217. Phone AC 316-522-2206. If confidential custody is desired, please note Rule 82-2-125. Drillers Logs will be on open file in the Oil and Gas Division, State Geological Survey of Kansas, Lawrence, Kansas 66044.

Operator Texas Oil & Gas Corp.		DESIGNATE TYPE OF COMP.: OIL, GAS, DRY HOLE, SWDW, ETC.:
Well No. 1	Lease Name Lawrence "M"	Dry Hole
S 3 T 31S R 10 E (W)		

WELL LOG

Show all important zones of porosity and contents thereof; cored intervals, and all drill-stem tests, including depth interval tested, cushion used, time tool open, flowing and shut-in pressures, and recoveries.

SHOW GEOLOGICAL MARKERS, LOGS RUN, OR OTHER DESCRIPTIVE INFORMATION.


FORMATION DESCRIPTION, CONTENTS, ETC.	TOP	BOTTOM	NAME	DEPTH
Winfield	1886	-157		
Towanda	1950	-221		
Fort Riley	2110	-381		
Heebner	3598	-1863		
Lansing	3792	-2063		
Base/Kansas City	4271	-2542		
Mississippi	4434	-2705		
TD	4518	-2789		
PBTD	4480	-2751		
DST #1, 2617-64', (Indian Cave), w/results as follows: IFP/30": 348-859#; ISIP/60": 1006#; FFP/45": 912-1006#; FSIP/90": 1006#; Rec 1100' salt water.				
DST #2, 4439-68', (Mississippi) w/results as follows: IFP/30": 120-301#, GTS in 6" @ 15,900 CFG; ISIP/60": 1021#; FFP/45": 341-531#, gauged 8950 CFG; FSIP/90": 1031#; Rec 180' GCM, 300' GCM, slight trace of oil, 860' GCW.				

RECEIVED
KANSAS CORPORATION COMMISSION

APR 29 1993

CONSERVATION DIVISION
WICHITA, KS

USE ADDITIONAL SHEETS, IF NECESSARY, TO COMPLETE WELL RECORD.

Date Received	
	HAROLD A. BROWN District Geologist
	November 22, 1977

Signature

Title

Date

Schlumberger

DUAL INDUCTION - LATEROLOG

COUNTY FIELD PRINT

FIELD LOCATION

WELL

COMPANY

COMPANY TEXAS OIL & GAS CO
Geo. Well File

WELL LAWRENCE M-1

FIELD ALMA
GEOLOGICAL FILE
COUNTY BARBER STATE KANSAS

LOCATION 510' FNL 810' FBL NEA
API SERIAL NO. 3 SEC. 3 TWP 315 RANGE 10W

Other Services:
CNL-GR
BHC

Permanent Datum: GROUND LEVEL; Elev.: 1724
Log Measured From KB 5 Ft. Above Perm. Datum
Drilling Measured From KB

Elev.: K.B. 1729
D.F. _____
G.L. 1724

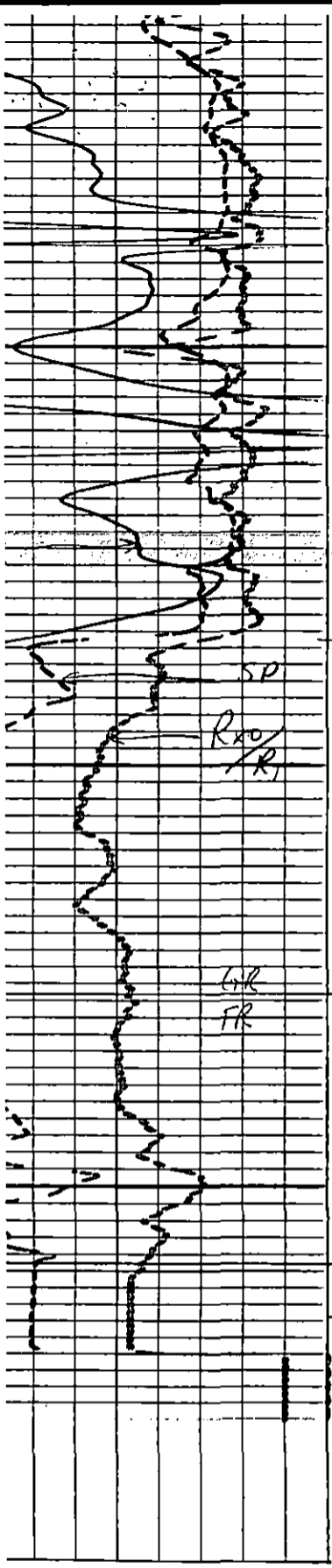
Date	4/1/77						
Run No.	ONE						
Depth-Driller	4518						
Depth-Logger (Schl.)	4525 1/2						
Btm. Log Interval	4509 1/2						
Top Log Interval	4108						
Casing-Driller	5 1/2	@	4110	@	@	@	@
Casing-Logger	4108						
Bit Size	4 3/4						
Type Fluid in Hole	FGM						
Dens.	8 1/2	31					
Visc.							
pH	70	13 1/2 ml		ml		ml	ml
Fluid Loss							
Source of Sample	MUD PIT						
Rm @ Meas. Temp.	4.97 @ 68 °F	2.93 @ 113 °F	@ °F	@ °F	@ °F	@ °F	@ °F
Rmf @ Meas. Temp.	3.33 @ 75 °F	2.21 @ 113 °F	@ °F	@ °F	@ °F	@ °F	@ °F
Rmc @ Meas. Temp.	- @ - °F	@ °F	@ °F	@ °F	@ °F	@ °F	@ °F
Source: Rmf	M	-					
Rmc							
Rm @ BHT	2.93 @ 113 °F	@ °F	@ °F	@ °F	@ °F	@ °F	@ °F
Circulation Stopped	4/1-0330						
Logger on Bottom	4/1-0545						
Max. Rec. Temp.	113 °F	°F	°F	°F	°F	°F	°F
Equip.	7749	WICH					
Location							
Recorded By	JACKSON						
Witnessed By Mr.	DAHLBERG						

RECEIVED

KANSAS CORPORATION COMMISSION

APR 29 1993

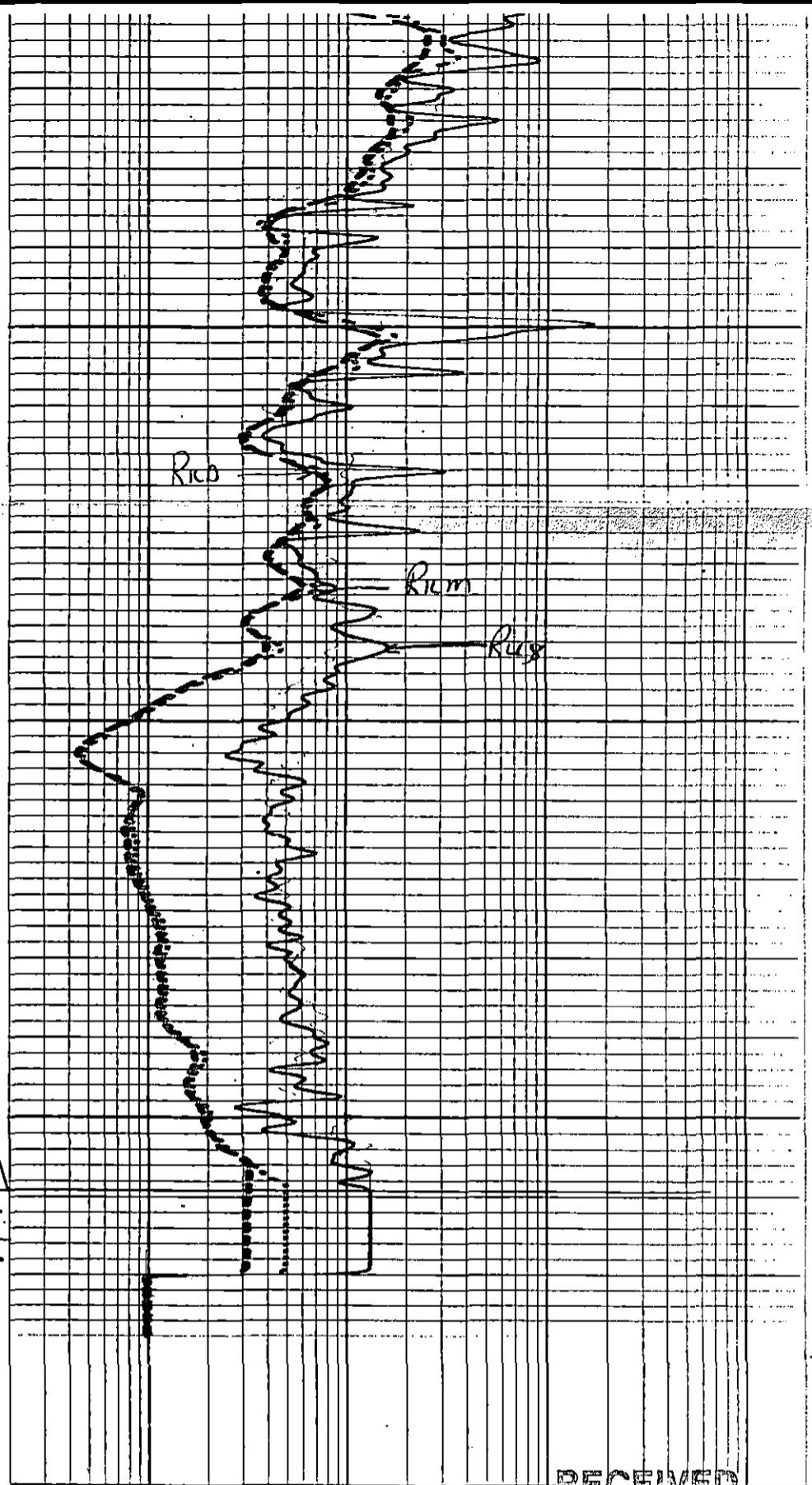
CONSERVATION DIVISION
WICHITA, KS



4400

4500

Log F. R.
Log T. D.

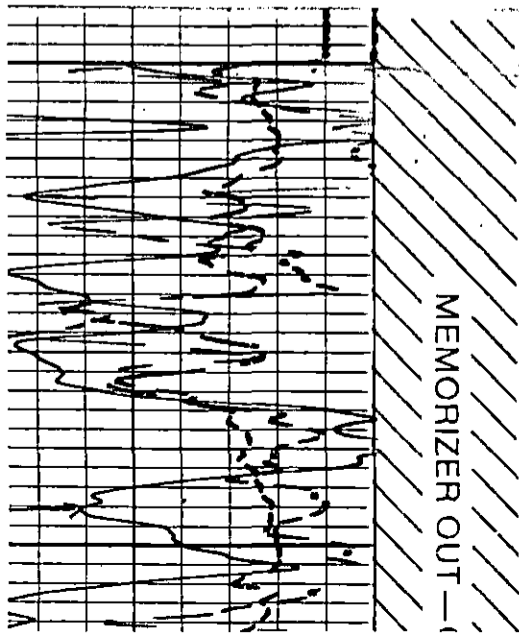


RECEIVED

KANSAS CORPORATION COMMISSION

APR 29 1993

CONSERVATION DIVISION
WICHITA, KS



MEMORIZER OUT

