

TYPE

NOTICE OF INTENTION TO DRILL

C-1

TO BE FILED WITH THE STATE CORPORATION COMMISSION
PRIOR TO COMMENCEMENT OF WELL

API Number 15-151-20,384
(For office use only) 0000

1. Operator Petric Enterprises, Inc.

Starting Date 4-18-77

Address R. R. # 1 Pratt, Kansas 67124

County Pratt

2. Contractor Damac Drilling Co., Inc.

Sec 16 Twp 28 S Rge 13 ~~W~~

Address Box 1164 Great Bend, Kansas 67530

Spot Location C SW 1/4 1W

3. Type of Equipment: Rotary X Cable Tool _____

Nearest Lease Line 990 ft.

4. Well to be Drilled for: Oil X Gas X

Lease Name Farmer # 1

Disposal _____ Input _____ Other _____

5. Depth of Deepest Fresh Water within 1 mile 150 ft.

Well No. # 1

6. Depth of Municipal Water Well within 3 miles 137 ft.

7. Depth to Protect all Fresh Water 200 ft.

8. Amount of Surface Casing to be set 250 ft.

Est. Total Depth 3300 ft.

9. Alternate No. 1 _____ No. 2 X

REMARKS:

OPERATOR STATES THAT HE WILL COMPLY WITH K. S. A. 55-128

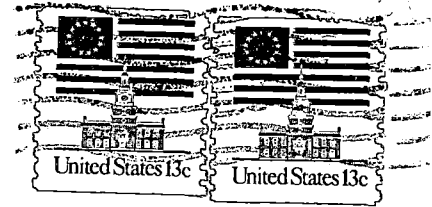
Signature of Operator Stanley D. Petric, Inc.



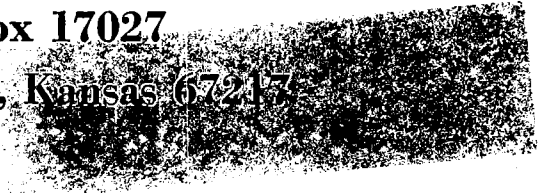
RECEIVED
CONSERVATION DIVISION

APR 23 1977

CONSERVATION DIVISION
Wichita, Kansas



State Corporation Commission of Kansas
Conservation Division
P. O. Box 17027
Wichita, Kansas 67217



APR 18 1977
4-18-77
CONSERVATION DIVISION
Wichita, Kansas

(IF PREFERRED, MAIL IN ENVELOPE)