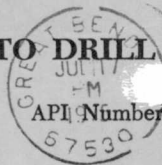


TYPE

NOTICE OF INTENTION TO DRILL

* CORRECTION

C.1



15-151-20,293

(For office use only)

0000

TO BE FILED WITH THE STATE CORPORATION COMMISSION
PRIOR TO COMMENCEMENT OF WELL

1. Operator Petrie Exploration Company, Inc.

Starting Date August 1, 1975

Address Route 1, Pratt, Kansas 67124

County Pratt

2. Contractor DaMac Drilling Company, Inc.

Sec 16 Twp 28S S Rge 13W E
W

Address Box 1164, Great Bend, Kansas 67530

* Spot Location SE SE SW

3. Type of Equipment: Rotary Cable Tool _____

Nearest Lease Line 330 ft ± or -100 ft.

4. Well to be Drilled for: Oil Gas

Lease Name Richard Smith

Disposal _____ Input _____ Other _____

Well No. 1

5. Depth of Deepest Fresh Water within 1 mile 150 ft.

6. Depth of Municipal Water Well within 3 miles 150 ft.

7. Depth to Protect all Fresh Water 250 ft.

8. Amount of Surface Casing to be set 300-900 ft.

Est. Total Depth 3500 ft.

9. Alternate No. 1 _____ No. 2

REMARKS:

* Was: S/2

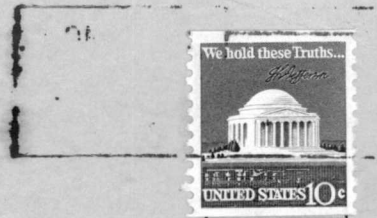
OPERATOR STATES THAT HE WILL COMPLY WITH K. S. A. 55-128
Petrie Exploration Company, Inc.

Signature of Operator By _____

Stanley D. Petrie
President



672-3954



**State Corporation Commission of Kansas
Conservation Division
P. O. Box 17027
Wichita, Kansas 67217**

**RECEIVED
STATE CORPORATION COMMISSION**

JUL 18 1975

**CONSERVATION DIVISION
Wichita, Kansas**

(IF PREFERRED, MAIL IN ENVELOPE)