

STATE OF KANSAS  
STATE CORPORATION COMMISSION

WELL PLUGGING RECORD

Give All Information Completely  
Make Required Affidavit  
Mail or Deliver Report to  
Conservation Division  
State Corporation Comm.  
245 North Water  
Wichita, KS 67202

Stevens County, Sec. 35 Twp. 34 Rge. 35 E/W  
Location as "NE/CNW $\frac{1}{4}$ SW $\frac{1}{4}$ " or footage from lines  
C SW/4 NE/4

Lease Owner Cities Service Company  
Lease Name Albright A Well No. 1  
Office Address 3545 N.W. 58th St., Okla. City, OK 73112

Character of Well (Completed as Oil, Gas or Dry Hole)  
Dry hole - well was completed as small oil well but

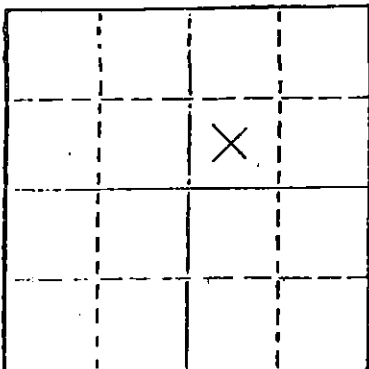
was never produced.  
Date Well completed 9-23 1981  
Application for plugging filed 6-16 1982  
Application for plugging approved 6-23 1982  
Plugging commenced 8-10 1982  
Plugging completed 8-11 1982

Reason for abandonment of well or producing formation  
Dry Hole

If a producing well is abandoned, date of last production  
19

Was permission obtained from the Conservation Division or  
its agents before plugging was commenced? Yes

Name of Conservation Agent who supervised plugging of this well Paul Luthi  
Producing formation None Depth to top Bottom Total Depth of Well 6781'  
Show depth and thickness of all water, oil and gas formations.



Locate well correctly on above  
Section Plot

OIL, GAS OR WATER RECORDS

CASING RECORD

FORMATION	CONTENT	FROM	TO	SIZE	PUT IN	PULLED OUT
				8-5/8"	1640'	None
				5-1/2"	6830'	3210'

Describe in detail the manner in which the well was plugged, indicating where the mud fluid  
was placed and the method or methods used in introducing it into the hold. If cement or other  
plugs were used, state the character of same and depth placed, from feet to  
feet for each plug set.

Set cast iron bridge plug at 6250', capped with 1 sx cmt. Shot off 5-1/2" casing at 3210'.

Spotted cmt plugs as follows: 2640-2840' 70 sx; 1580-1680' 25 sx; 4-34' 10 sx 9.5# mud  
between plugs. Cut off 5-1/2" casing 4' below ground level and welded on cap.

(If additional description is necessary, use BACK of this sheet)

Name of Plugging Contractor Daco, Inc.

STATE OF Oklahoma COUNTY OF Oklahoma, ss.  
Verlin Meier (employee of owner) or (owner or operator)

of the above-described well, being first duly sworn on oath, says: That I have knowledge of  
the facts, statements, and matters herein contained and the log of the above-described well  
as filed and that the same are true and correct. So help me God.

Verlin Meier - Production Region Manager

(Signature) *Verlin Meier*

3545 N.W. 58th St., Okla. City, OK 73112  
(Address)

SUBSCRIBED AND SWORN TO before me this 34 day of August, 19 82

*Olive E. Meneo*  
Notary Public.

My commission expires July 12, 1984

RECEIVED  
STATE CORPORATION COMMISSION

AUG 25 1982

CONSERVATION DIVISION  
Wichita, Kansas

15-189-20532-0000

*Beaver*

KANSAS RECEIVED  
STATE CORPORATION COMMISSION

**WELL COMPLETION REPORT AND  
DRILLER'S LOG**

JUN 28 1982

S. 35 T. 34S R. 35 <sup>XX</sup><sub>W</sub>  
Loc. C SW NE

County Stevens

API No. 15 — 189 — 20532  
County Number CONSERVATION DIVISION

Operator Cities Service Company  
Wichita Kansas

Address 3545 N.W. 58th Street Oklahoma City, Oklahoma 73112

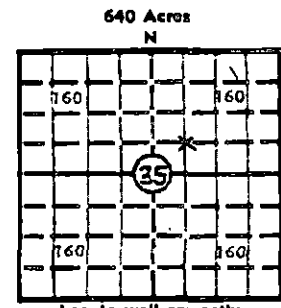
Well No. 1 Lease Name Albright "A"

Footage Location 1980 feet from (N) XX line 1980 feet from (E) XX line

Principal Contractor Johnson Drilling Co. Geologist

Spud Date 7-11-81 Date Completed 9-23-81 Total Depth 6842' P.B.T.D. 6781'

Directional Deviation Oil and/or Gas Purchaser Oil - Koch



Elev.: Gr. 2964'  
DF 2975' KB

**CASING RECORD**

Report of all strings set — surface, intermediate, production, etc.

Purpose of string	Size hole drilled	Size casing set (in O.D.)	Weight lbs/ft.	Setting depth	Type cement	Socks	Type and percent additives
Surface	12-1/4"	8-5/8"	24#	1640'	HOWCO Light	650	2% CaCl, 1/2# Flocele
					Class H	200	3% CaCl, 1/4# Flocele
Production	7-7/8"	5-1/2"	15.5# 14#	6830'	50/50 Pozmix	250	2% Gel, 18% Salt 1/4# Flocele .8% CFR-2

**LINER RECORD**

**PERFORATION RECORD**

Top, ft.	Bottom, ft.	Socks cement	Shots per ft.	Size & type	Depth interval
TUBING RECORD			1	DP Jets	6480 - 6491' 6498 - 6501'
Size	Setting depth	Packer set at			
2-3/8"	6507'				

**ACID, FRACTURE, SHOT, CEMENT SQUEEZE RECORD**

Amount and kind of material used	Depth interval treated
Treated with 1500 gal. Diesel containing 5 gal. Hi-Flo III per 1000 gal. flushed with 1600 gal Diesel	6480 - 6491', 6498 - 6501'
Frac with 28,000 gal. 75% quality foam diesel with 25,000# 20/40 sand	6480 - 6491', 6498 - 6501'

**INITIAL PRODUCTION**

Date of first production <u>8-22-81</u>	Producing method (flowing, pumping, gas lift, etc.) <u>Pumping</u>
RATE OF PRODUCTION PER 24 HOURS	Oil <u>5</u> bbls. Gas <u>139</u> MCF Water <u>10</u> bbls. Gas-oil ratio <u>27,800</u> CFPB
Disposition of gas (vented, used on lease or sold) <u>To be sold</u>	Producing interval(s) <u>6480 - 6491'; 6498 - 6501'</u>

INSTRUCTIONS: As provided in KCC Rule 82-2-125, within 90 days after completion of a well, one completed copy of this Drillers Log shall be transmitted to the State Geological Survey of Kansas, 4150 Monroe Street, Wichita, Kansas 67209. Copies of this form are available from the Conservation Division, State Corporation Commission, 245 No. Water, Wichita, Kansas 67202. Phone AC 316-522-2206. If confidential custody is desired, please note Rule 82-2-125. Drillers Logs will be on an open file in the Oil and Gas Division, State Geological Survey of Kansas, Lawrence, Kansas 66044.

Operator Cities Service Company		DESIGNATE TYPE OF COMP.: OIL, GAS, DRY HOLE, SWDW, ETC.:
Well No. 1	Lease Name Albright "A"	Oil
S 35 T 34S R 35 <sup>XV</sup> W		

**WELL LOG**

Show all important zones of porosity and contents thereof; cored intervals, and all drill-stem tests, including depth interval tested, cushion used, time tool open, flowing and shut-in pressures, and recoveries.

SHOW GEOLOGICAL MARKERS, LOGS RUN, OR OTHER DESCRIPTIVE INFORMATION.

FORMATION DESCRIPTION, CONTENTS, ETC.	TOP	BOTTOM	NAME	DEPTH
Surface, Clay, and Sand	0'	320'		
Redbed, Sand, & Sandy Shale	320'	1640'	Ran Dual Induction SFL with linear correlation log and Compensated Neutron-Formation Density log and Compensated Density Log	
Anhydrite	1640'	1650'		
Shale	1650'	3535'		
Lime and Shale	3535'	6469'		
Sand and Shale	6469'	6514'		
Shale	6514'	6524'		
Lime and Shale	6524'	6842'		
P.B.T.D.		6781'		
T.D.		6842'		

USE ADDITIONAL SHEETS, IF NECESSARY, TO COMPLETE WELL RECORD.

Date Received	<p align="right"><i>W. A. Givens</i> Signature W. A. Givens Production Region Manager, KAN-O-TEC N.E. Title October 15, 1981 Date</p>
---------------	---