

STATE OF KANSAS  
STATE CORPORATION COMMISSION  
200 Colorado Derby Building  
Wichita, Kansas 67202

WELL PLUGGING RECORD  
K.A.R.-82-3-117

API NUMBER 15-189-20726 -0000

LEASE NAME COULTER #1 UNIT

WELL NUMBER 3

4620 Ft. from S Section Line

660 Ft. from E Section Line

SEC. 22 TWP. 33S RGE. 38W(E) or (W)

COUNTY STEVENS

Date Well Completed 9/15/84

Plugging Commenced 9/26/91

Plugging Completed 10/2/91

LEASE OPERATOR MOBIL OIL CORPORATION

ADDRESS 2319 NORTH KANSAS, LIBERAL, KS 67901

PHONE# (316) 626-1160 OPERATORS LICENSE NO. 5208

Character of Well GAS

(Oil, Gas, D&A, SWD, Input, Water Supply Well)

The plugging proposal was approved on 9/27/91 (date)

by RICHARD LACEY (KCC District Agent's Name).

Is ACO-1 filed? YES If not, is well log attached? NA

Producing Formation LOWER MORROW Depth to Top 6080' Bottom 6087' T.D. 6216'

Show depth and thickness of all water, oil and gas formations.

RECEIVED  
STATE CORPORATION COMMISSION

OIL, GAS OR WATER RECORDS

CASING RECORD

Formation	Content	From	To	Size	Put In	Pulled out
LOWER MORROW	GAS	SURFACE	1739'	9 5/8"	1739'	0
		SURFACE	6215'	5 1/2"	6215'	1805'

DEC 04 1991

Describe in detail the manner in which the well was plugged, indicating where the mud fluid was placed and the method or methods used in introducing it into the hole. If cement or other plugs were used, state the character of same and depth placed, from \_\_\_ feet to \_\_\_ feet each set.

SEE ATTACHED

(If additional description is necessary, use BACK of this form.)

Name of Plugging Contractor HALLIBURTON License No. \_\_\_\_\_

Address LIBERAL, KS 67901

NAME OF PARTY RESPONSIBLE FOR PLUGGING FEES: MOBIL OIL CORPORATION

STATE OF KANSAS COUNTY OF SEWARD, ss.

R. KELLY, ENGINEERING TECHNICAL (Employee of Operator) or (Operator) of above-described well, being first duly sworn on oath, says: That I have knowledge of the facts, statements, and matters herein contained and the log of the above-described well as filed that the same are true and correct, so help me God.

(Signature) R. Kelly

(Address) 2319 NORTH KANSAS, LIBERAL, KS 67901



SUBSCRIBED AND SWORN TO before me this 3rd day of DECEMBER, 19 91

Sharon A. Cook  
Notary Public

My Commission Expires: 10-1-94

## PLUGGING REPORT

COULTER 1-3  
 LOC 22-33-38  
 STEVENS CO. KAN  
 LOC CODE 25544  
 PLUG AND ABANDONMENT

KCC WITNESSED BY: GLEN BARLOW

## PROCEDURE

9/26/91 MOVED IN PATRICK WELL SERVICE AND RIG UP. WENT TO UNSEAT PUMP, PUMP STUCK, BACK OFF RODS AND LAID DOWN. RELEASED POLE.

9/27/91 CALL KCC., WENT OVER PLUGGING PROCEEDURE AND GOT PERMISSION TO OPEN WORKING PIT.

9/28/91 MOVED IN PATRICK WELL SERVICE AND RIG UP DERRICK. SION

9/30/91 BLEW WELL DOWN, PUMP IN APOX. 150 BBLs OF LEASE WATER, MADE SURE WELL DIDN'T COME BACK ON US. UNFLANGED TBG. HEAD, RELEASED TA, POOH W/ 192 JTS OF 2 7/8. ROSEL ON LOC., RAN IN W/CIBF., SET AT 5950' KB., PLACED 2 SX CMT ON TOP. RAN BACK IN W/190 JTS OF TBG AND LAND AT 6023+-, CIR. GELL SPACER TO 3202+-, POOH W/89 JTS, LEAVING 101 JTS STILL IN HOLE, OPEN END AT 3202'+-, SION

10/1/91 HALLIBURTON ON LOC. PUMPED IN 8.8 BELS OF GEL, FOLLOWED W/110 SX OF 50/50 POZMIX., DISPLACED W/GEL AND H2O. SHOULD HAVE CMT PLUG FROM 2165-3202' (ACROSS CHASE) AND GEL SPACER 1805-2165'+-, POOH AND LAID DOWN TBG. ROSEL ON LOC., RAN IN W/JET CUTTER, CUT OFF 5.5 CSN AT 1805' KB. HOMCO ON LOC. RAN IN W/CENTER SPEAR, PULL 5.5 CSN OFF CSN SLIPS, PULLED TOP 18' CUT OFF, SET CSN IN SLIP BOWL, REMOVED CUT OFF. HALLIBURTON HOOK UP TO CSN STRING, PUMPED IN 80 BBLs OF GEL, 50 SX 50/50 POZMIZ, FLUSHED W/36 BBLs GELL, 2 BELS H2O. SHOULD HAVE CMT 50' BELOW SURFACE AND 98' INTO SURFACE. HOLE CIR. W/GEL. POOH W/24 JTS OF 5.5, 16 JTS LEFT IN HOLE, AT 718+-, BALANCE IN 75 SX PLUG. PULLED OUT OF HOLE W/15 JT OF 5.5, HAVE 1 JT PLUS 16' CUTOFF STILL IN HOLE, 60'. CIRCULATED IN 25 SX OF 50/50 POZMIX. WELL CMT'ED IN. JOB WITNESS BY KCC: GLEN BARLOW. FINISHED AT 6:30 PM. SION

PAGE 1

RECEIVED  
 STATE CORPORATION COMMISSION

DEC 04 1991

CONSERVATION DIVISION  
 Wichita, Kansas

PAGE 2 OF 1

10/2/91 CLEANED LOC. RIG DOWN AND RELEASED PATRICK WELL SERVICE. F&O AND RED WELDING, CAME OUT, DUG DOWN TO TOP OF CONDUCTOR PIPE, APPROX. 5' BELOW GL. CUT OFF SURFACE AND WELDED ON CAP AND BACK FILLED. WELL PLUGGED!

SEE ATTACHMENTS

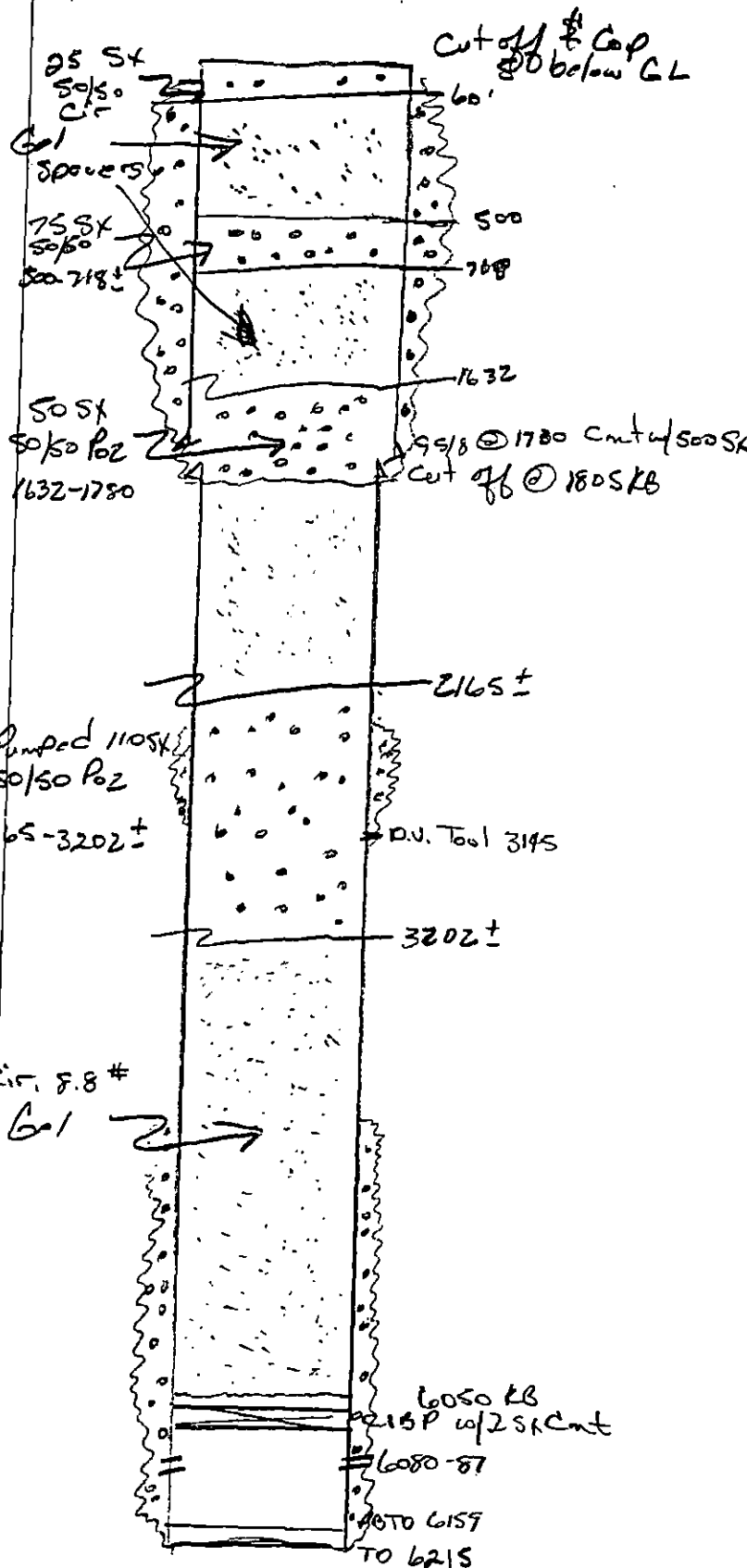
TOM ROMERO  
PRODUCTION TECH 111

CC. FILE  
ENGINEER STAFF  
REGULATORY

RECEIVED  
STATE COMMISSION COMMISSION

DEC 04 1991

42-381 100 SHEETS 3 SQUARE  
 42-382 100 SHEETS 3 SQUARE  
 42-383 200 SHEETS 3 SQUARE  
 NATIONAL  
 MADE IN U.S.A.



Coultor 1-3  
 22-33-38

Surface 9 5/8 36# 1730  
 Cnt w/ 500 SX

Production 5 1/2 15.5# 6215  
 Cnt w/  
 525 SX - 5300-6216  
 190 SX - 2350-3145 DU  
 Tool

RECEIVED  
 STATE CORPORATION COMMISSION

DEC 04 1991

CONSERVATION DIVISION



SEP 17 1991

CONSERVATION DIVISION  
Wichita, KansasProcedure:

1. MIRU workover rig. Breakdown wellhead.
2. Dig out 9-5/8" surface casing.
3. Pull +/- 6088' of 7/8" & 3/4" rods. Pull 188 jts tbg then remove TBG Anchor -5973. Pull 4 jts tbg, SN and MA.
4. Run bit and scraper on 2-7/8" tbg. Run a gauge ring to check for obstructions down hole. If an obstruction is found it would be up to the foreman to decide how to handle the problem.
5. RIH w/ and set CIBP -6070' and drop 2 sx 50/50 Pozmix. RIH w/ 2-7/8" tbg to TOC -6055. Fill to surface w/ 150 bbls 36 viscosity, 9#/gal mud.
6. POOH 2-7/8" tbg. Salvage 5-1/2" csg -1800' & POOH. While removing csg keep hole filled with mud.
7. MIRU cmt mixer.
8. RIH w/ 2-7/8" tbg -3210'. Spot cmt plug from -3210' to 2400' by balancing 110 sx (includes 10% excess) of 50/50 Pozmix by pumping 14 bbls mud after spotting cmt. Pull 28 jts tbg. Flush w/ 5 bbls mud. WOC 4 hrs. Tag TOC w/ tbg to confirm -2400'.
9. Set 2-7/8" tbg -1800'. This cmt spot begins in Open Hole (1800') and ends in Surface Csg (1600'). Spot cmt plug from 1800' to 1600' by balancing 100 sx (includes 28% excess) of 50/50 Pozmix by pumping 9 bbls mud after spotting cmt. Pull 10 jts tbg. Flush w/ 3 bbls of mud. WOC 4 hrs. Tag TOC w/ tbg to confirm -1600'.
10. Set 2-7/8" tbg -700'. Spot cmt plug from 700' to 400' by balancing 140 sx (includes 11% excess) of 50/50 Pozmix by pumping 2 bbls mud after spotting cmt. Pull 12 jts tbg. Flush w/ 1 bbls of mud. WOC 4 hrs. Tag TOC w/ tbg to confirm -400'.
11. Set 2-7/8" tbg -50'. Spot cmt plug from 50' to 5' by pumping 20 sx (includes 10% excess) of 50/50 Pozmix. POOH and lay down 2-7/8" tbg. Top off w/ cmt to 5'. WOC 4 hrs.
12. Cut 9-5/8" csg to 5' below surface and weld steel cap across csg stub stating well name, number, and date of plugging.
13. RDMO. Level and clean location.

*A. R. Benavides*A. R. Benavides  
Summer Engineer

CURRENT COMP. COULTER #1-3

GENTZLER FIELD

22-T33S-38W

STEVENS COUNTY, KANSAS

KB ELEV: 3177'

Datum Level is K.B. 17' above G.L. (3160')  
TCG 8-15-91

0 - 1730' Cement W/ 500 sx Class H

0 - 1730' 52 jts 9.625" OD 36#/ft K55 LT&C Casing

TOC 5300 CBL 9/13/84

3145 - 3150' Dvtool

3195 - 3196' Basket

2350 - 3145' Cement w/ 250 sx Class H

0 - 4050' 7/8" Rods

5300 - 6216' Cement w/ 250 sx Class H

RECEIVED  
STATE OF KANSAS OIL AND GAS COMMISSION

SEP 17 1991

REGISTRATION DIVISION  
Topeka, Kansas

5970 - 5973' Anchor 12 Point

6104 - 6105' Nipple

6105 - 6135' Mudanchor

6171 - 6172' Flcollar

6215 - 6216' Floatshoe

0 - 6104' 192 jts 2.875" OD 6.5#/ft J 55 Upset Tubing

4050 - 6088' 3/4" Rods

6080 - 6087' Perfs 2 SPF

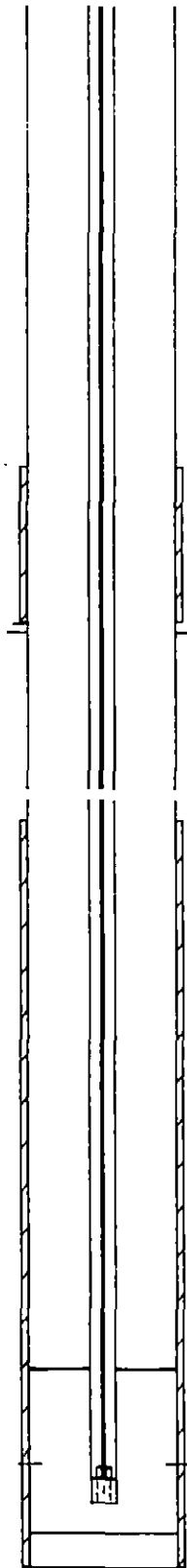
6088 - 6104' Pump 2-1/2 X 1-1/2 X 16 RWBC

0 - 6215' 194 jts 5.5" OD 15.5#/ft K55 LT&C Casing

Mobil - PRISM

PBTD: 6159'

TD: 6216'



PROPOSED COMP. COULTER #1-3

GENTZLER FIELD

22-T33S-38W

STEVENS COUNTY, KANSAS

KB ELEV: 3177'

5 - 1730' Cement W/ 500 sx Class H

TOC 5300 CBL 9/13/84

1730 - 1800' 8.750" OD Openhole

3145 - 3150' Dvtool

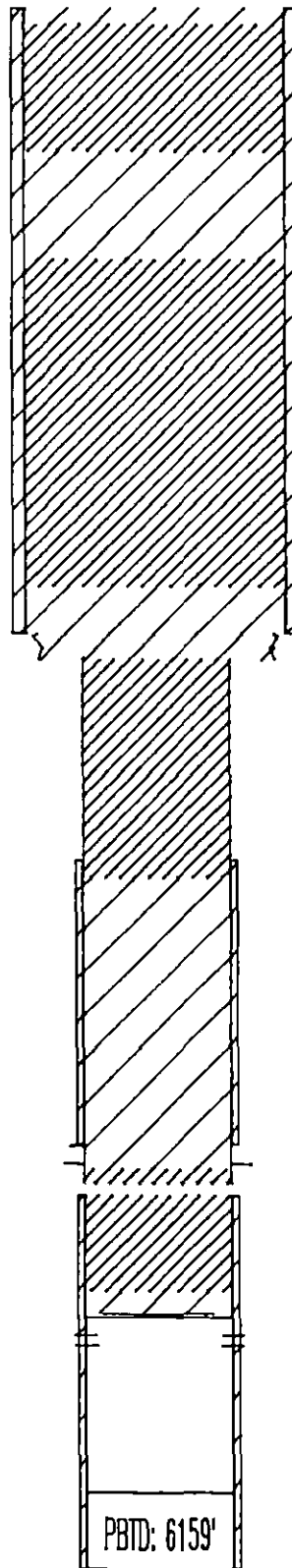
3195 - 3196' Basket

6067 - 6070' CIBP

6215 - 6216' Floatshoe

6171 - 6172' Fcollar

A. R. Benavides / Summer Engineer



PBTD: 6159'

TD: 6216'

5 - 50' Cement Plug 20 SX

50 - 400' Fill 9#/gal, 36 visc mud

400 - 700' Cement Plug 140 SX

700 - 1600' Fill 9#/gal, 36 visc mud

1800 - 6215' 194 jts 5.5" OD 15.5#/ft K55 LT&C Casing

1600 - 1730' Cement Plug 65 SX

1730 - 1800' Cement Plug 35 SX

1800 - 2400' Fill 9#/gal, 36 visc mud

2350 - 3145' Cement w/ 250 sx Class H

2400 - 3210' Cement Plug 110 SX

5300 - 6216' Cement w/ 250 sx Class H

3210 - 6055' Fill 9#/gal, 36 visc mud

6055 - 6067' Cement Plug 2 SX

6080 - 6087' Perfs 2 SPF

5 - 1730' 52 jts 9.625" OD 36#/ft K55 LT&C Casing

RECEIVED  
STATE OCCUPATION COMMISSION

SEP 17 1991

DIVISION  
Wichita, Kansas

Mobil - PRISM