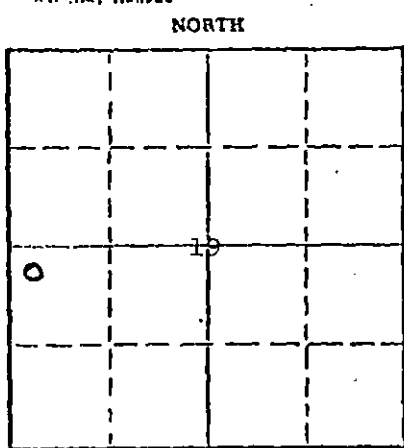


WELL PLUGGING RECORD

Give All Information Completely
Make Required Affidavit
Well or Driller Report to:
Conservation Division
State Corporation Commission
212 No. Market
Wichita, Kansas

Seward County, Sec. 19 Twp. 34S Rge. (E) 32 (W)

Location as "NE/CNW/SW" or footage from lines 2126' FSL & 139' FWL
Lease Owner Anadarko Production Company
Lease Name Condit Waterflood Unit Well No Test Hole 1-B
Office Address P. O. Box 351 Liberal, Kansas 67901
Character of Well (completed as Oil, Gas or Dry Hole) Test Hole
Date well completed November 17, 1977
Application for plugging filed January 4, 1978
Application for plugging approved January 5, 1978
Plugging commenced March 2, 1978
Plugging completed March 2, 1978
Reason for abandonment of well or producing formation Required information obtained-no intention to complete as producer
If a producing well is abandoned, date of last production None 19
Was permission obtained from the Conservation Division or its agents before plugging was commenced? Yes



Locate well correctly on above Section Plat

Name of Conservation Agent who supervised plugging of this well none present
Producing formation none Depth to top Bottom Total Depth of Well 610 Feet
Show depth and thickness of all water, oil and gas formations.

OIL, GAS OR WATER RECORDS

CASING RECORD

FORMATION	CONTENT	FROM	TO	SIZE	PUT IN	PULLED OUT
SEE ATTACHED SHEET				1 1/2" Plastic	610	None

Describe in detail the manner in which the well was plugged, indicating where the mud fluid was placed and the method or methods used in introducing it into the hole. If cement or other plugs were used, state the character of same and depth placed, from 610 feet to -0- feet for each plug set.

Connected to 1 1/2" plastic pipe in hole and pumped into it. Pumped in total of 70 sacks of Halliburton Light cement and circulated cement to surface. Hole filled from TD to surface with cement.

RECEIVED
STATE CORPORATION COMMISSION
MAR 13 1978
CONSERVATION DIVISION
WICHITA, KANSAS

(If additional description is necessary, use BACK of this sheet)
Name of Plugging Contractor Carlile Water Well Service, Inc.
Address P. O. Box 275, Liberal, Kansas 67901

STATE OF KANSAS COUNTY OF SEWARD, ss.
Anadarko Production Company (employee-of-owner) or (owner or operator) of the above-described

well, being first duly sworn on oath, says: That I have knowledge of the facts, statements, and matters herein contained and the log of the above-described well as filed and that the same are true and correct. So help me God.

LEONA FERNE CORNELSEN
STATE NOTARY PUBLIC
Seward County, Kansas
My Appointment Expires June 23, 1980
SUBSCRIBED AND SWORN to before me this 8th day of March, 1978

(Signature) Paul Gatlin
Paul Gatlin, Division Drilling Supervisor
P. O. Box 351 Liberal, Kansas 67901
(Address)

My commission expires June 23, 1980
Leona Ferne Cornelsen
Notary Public.

15-175-2034-0000

TEST HOLE REPORT

Layne-Western Company, Inc.



WATER SUPPLY SERVICES SINCE 1924
TEST DRILLING • WATER WELLS • PUMPS

Contract Name Anadarko Production Co.

TEST HOLE
No. 1-B

Job No. K-802 Date 11-17-77

City Liberal State Kansas

Driller Joe Van Bauls

Location of Test Hole 521' South & 139' East
of NW corner of

Elevation of Test Hole _____

Static Water Level 185' Approx.

1/4 SW 1/4 Sec. 19 of T 34S
R 32W Seward Co., Kansas

Measured _____ Hours After Completion

From	To	Description of Strata	Water Bearing
0	8	Top soil	
8	22	Fine sand	
22	40	Fine sand, clay streaks	
40	50	Brown clay, caliche streaks	
50	60	Fine sand	
60	120	Tan clay	
120	141	Fine to medium sand (firm)	
141	188	Fine to medium sand (loose)	
188	207	Tan clay	
207	320	Fine to medium sand	
320	362	Mixed colored clay	
362	496	Blue clay, (sticky)	
496	525	Fine sand, blue clay streaks (dirty)	
525	608	Fine sand, dirty (loose)	
608	610	Red Bed	

RECEIVED
STATE CORPORATION COMMISSION

JAN 05 1978

CONSERVATION DIVISION
Wichita, Kansas

Remarks:

ANADARKO

0

277

10-100

20

40

60

80

100

120

140

160

180

200

220

240

260

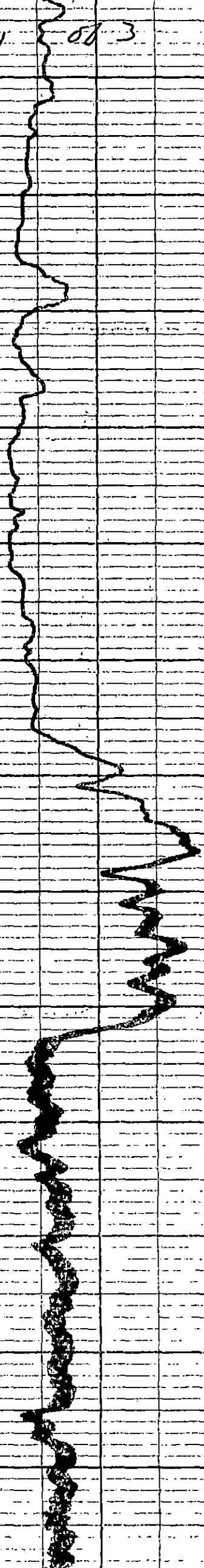
TEST HOLE 1-B

Pg 1 of 3

RECEIVED
STATE CORPORATION COMMISSION

JAN 05 1978

CONSERVATION DIVISION
Wichita, Kansas



TEST HOLE 1-B

Pg 2 of 3

280

300

320

340

360

380

400

420

440

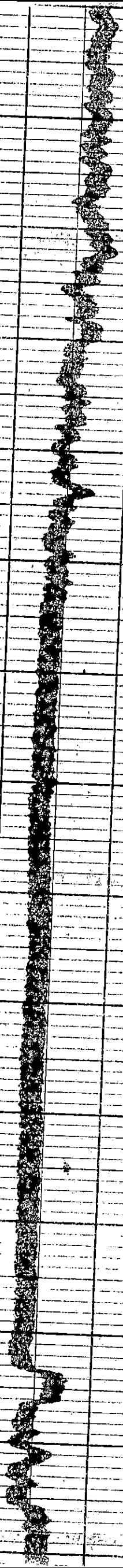
460

480

500

520

540



540

560

580

600

610

TEST HOLE 1-B

Pg 3 063

