

MAP SCALE: 1" = 2000'

Contour Interval: 5'

0522

15-175-20,983-00.00

WELL ELEVATION REPORT

SANTA FE MINERALS

Operator

J.T. Hacker #2

Lease

1320'FNL-1320'FWL Section 21 34S-34W

Location

SEWARD KANSAS

County

ELEVATION: _____ Kelly Bushing

_____ Derrick Floor

2949' Ground

October 22, 1987

Date Yes No

Left at Rig

Run by RO

NOTE: If there is any any possible discrepancy in this elevation information, call Topographic Land Surveyors of Oklahoma Company (405) 843-4847

RECEIVED
STATE CORPORATION COMMISSION

OCT 30 1987

CONSERVATION DIVISION
Wichita Kansas

TOPOGRAPHIC LAND SURVEYORS

OF OKLAHOMA COMPANY
Surveying and Mapping for the Oil & Gas Industries
6709 N. Classen Blvd.
Oklahoma City, Oklahoma 73116
Phone (405) 843-4847

TOPOGRAPHIC LAND SURVEYORS

Surveying and Mapping for the Energy Industry

1008 E 17TH ST • HAYS, KANSAS 67601

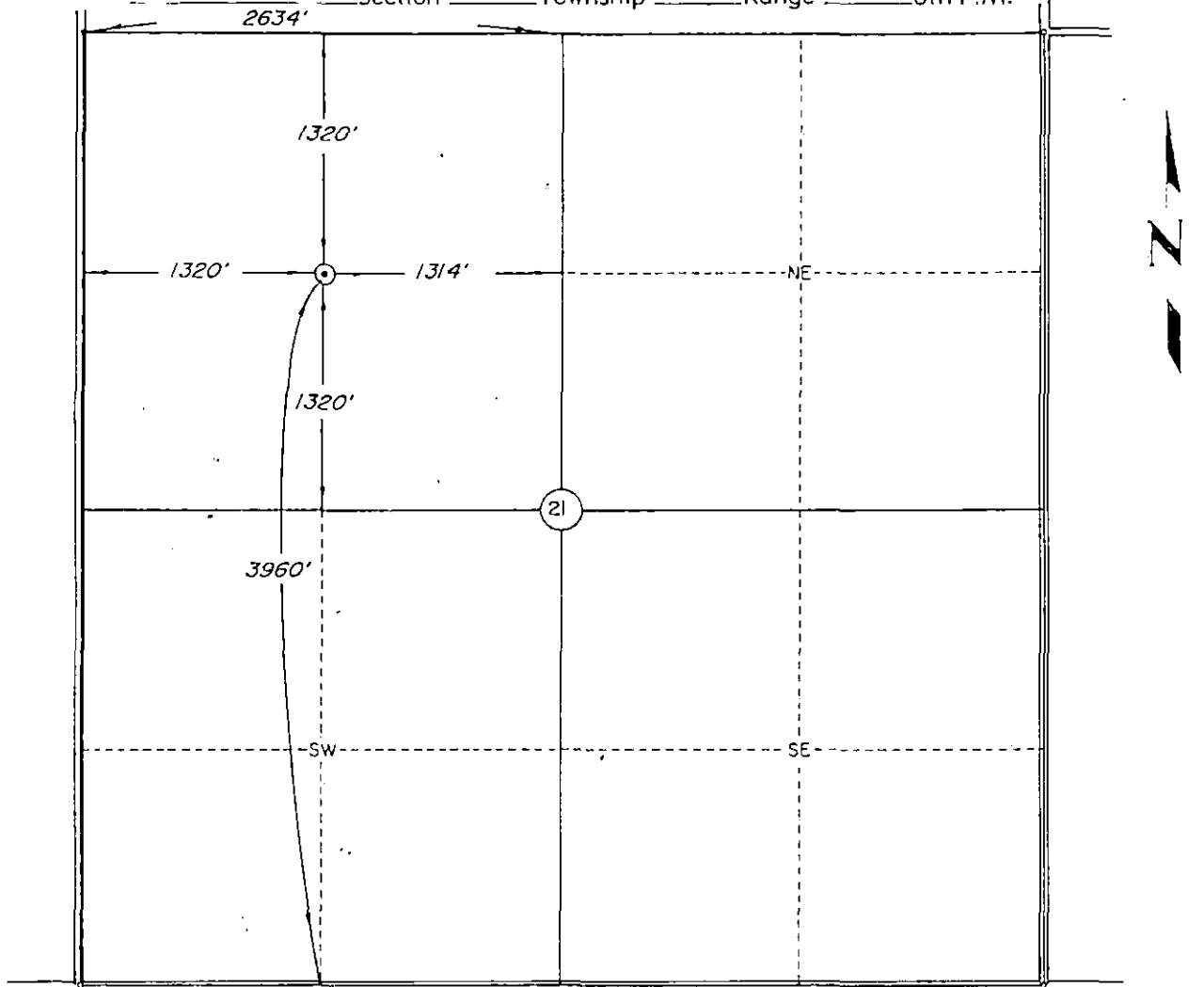
TELEPHONES: LOCAL (913) 625-2663 • OKLA. WATS (800) 522-4273 • OUT OF STATE WATS (800) 654-3219

15-175-20,983

SEWARD

County, Kansas

1320' FSL-1314' FEL Section 21 Township 34S Range 34W 6th P.M.



Scale: 1" = 1000'

Date Staked October 10, 1987

This location has been very carefully staked on the ground according to the best official survey records, maps, and photographs available to us, but its accuracy is not guaranteed.

Review this plat and notify us immediately of any possible discrepancy.

Operator: SANTA FE MINERALS

ELEVATION:

2949' Gr. at Stake

Lease Name: _____ J.T. Hacker Well No 2

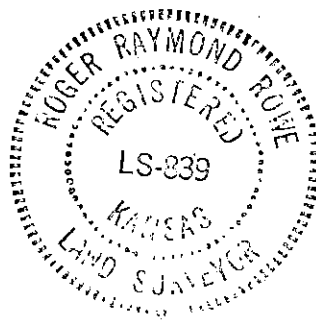
Topography & Vegetation Location fell in planted milo.

Reference Stakes or Alternate Location
 Good Drill Site? Yes Stakes Set none

Best Accessibility to Location From West.

Distance & Direction
 from Hwy Jct or Town From Jct. US 83 & US 270 & Tucker Road (North of Liberal),

go 6 miles West on Tucker Road & 1 mile North to the Northwest Corner of Section 21, T34S-R34W.



CERTIFICATE:

I, Roger R. Rowe a Registered Land Surveyor and an authorized agent of Topographic Land Surveyors, do hereby certify that the above described well location was surveyed and staked on the ground as shown herein.

RECEIVED
 STATE CORPORATION COMMISSION

OCT 30 1987

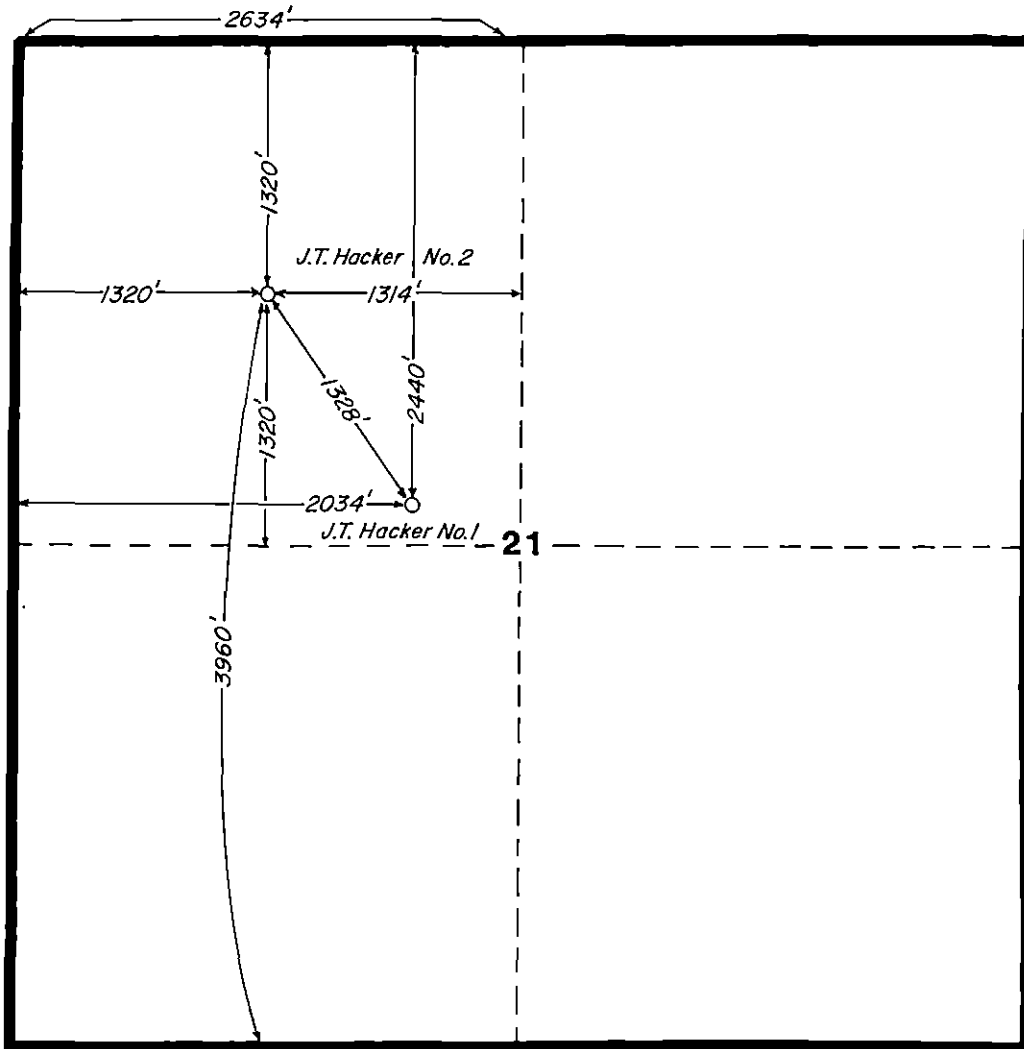
Roger R. Rowe
 Kansas Reg. No. 839

CONSERVATION DIVISION
 Wichita, Kansas

County SEWARD State KANSAS

Township 34S Range 34W Section 21

15-175-20,983



ST Santa Fe Minerals, Inc. <small>A DIVISION OF SANTA FE INTERNATIONAL CORPORATION 1000 East 10th Street • 66101 • Kansas City, MO 64108 • Dallas, Texas 75201</small>	
LOCATION PLAT	
DALLAS	
Drawn By:	Date:
GEOL.	GEOP.
DATE:	DATUM:
CONTOUR INT.:	SCALE: 1" = 1000'
FILE NO.	



RECEIVED
STATE CORPORATION COMMISSION

OCT 30 1987

CONSERVATION DIVISION
Wichita, Kansas