

COOK

TOPOGRAPHIC LAND SURVEYORS

Surveying and Mapping for the Energy Industry

1008 E 1/TH ST. • HAYS, KANSAS 67601

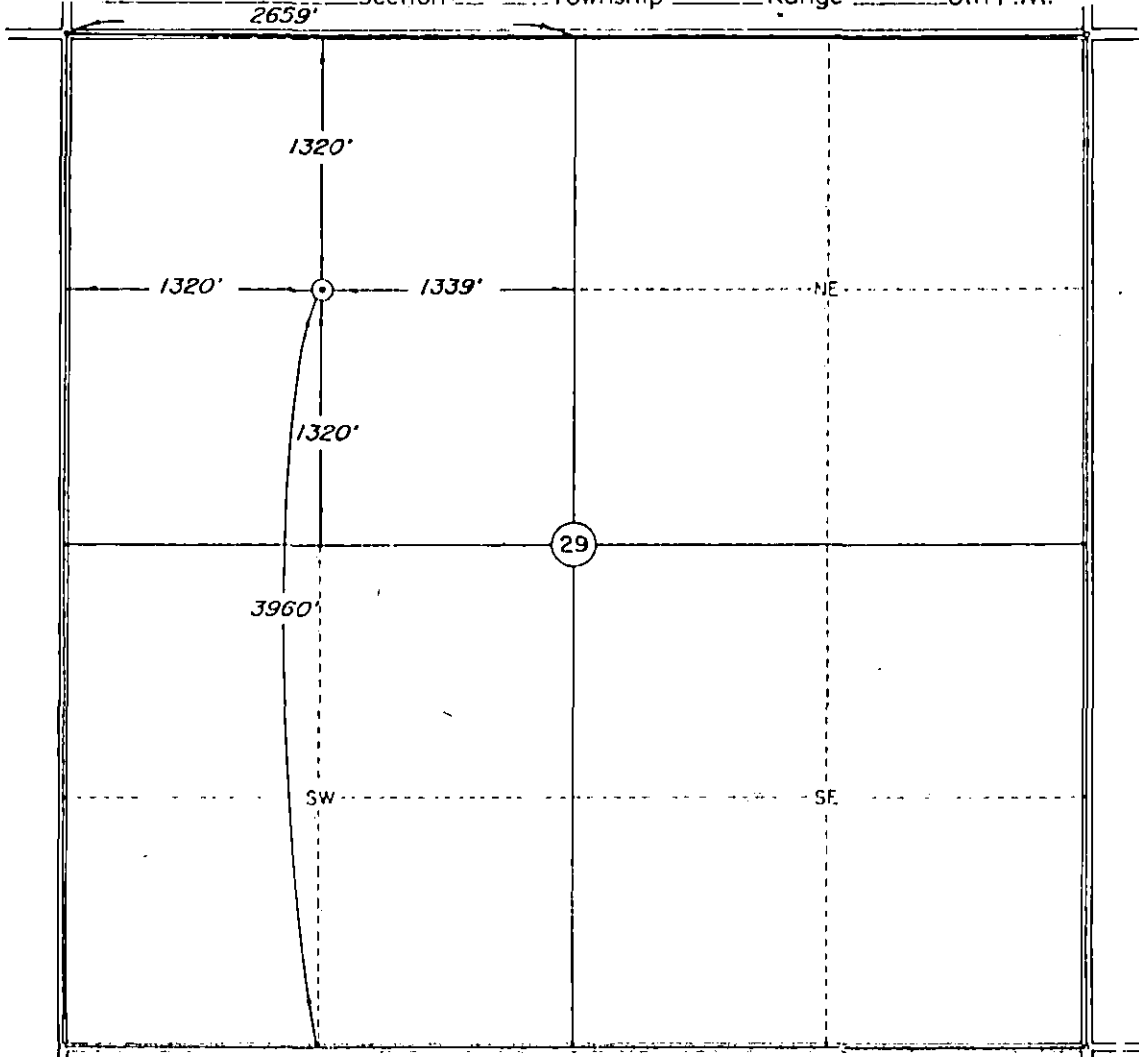
TELEPHONES LOCAL (913) 625-2683 • OKLA. WATS (800) 522-4273 • OUT OF STATE WATS (800) 654-3219

15-175-20,982-00-00

SEWARD

County, Kansas

1320'FSL-1339'FEL Section 29 Township 34S Range 34W 6th P.M.



Scale 1" = 1000'

Date Staked October 10, 1987

This location has been very carefully staked on the ground according to the best official survey records, maps, and photographs available to us, but its accuracy is not guaranteed.

Review this plat and notify us immediately of any possible discrepancy.

Operator: SANTA FE MINERALS

ELEVATION:
2940' Gr. at Stake

Lease Name D.T. Gammell Well No 2

Topography & Vegetation Location fell in planted milo.

Reference Stakes or Alternate Location

Good Drill Site? Yes Stakes Set none

Best Accessibility to Location From West.

Distance & Direction

from Hwy Jct or Town From Jct. US 83 & US 270 & Tucker Road (North of Liberal), go 7 miles West to the Northwest Corner of Section 29, T34S-R34W.

CERTIFICATE:

I, Roger R. Rowe a Registered Land Surveyor and an authorized agent of Topographic Land Surveyors, do hereby certify that the above described well location was surveyed and staked on the ground as shown herein.

RECEIVED
STATE CORPORATION COMMISSION

Roger R. Rowe

OCT 30 1987

Kansas Reg. No. 839

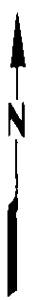
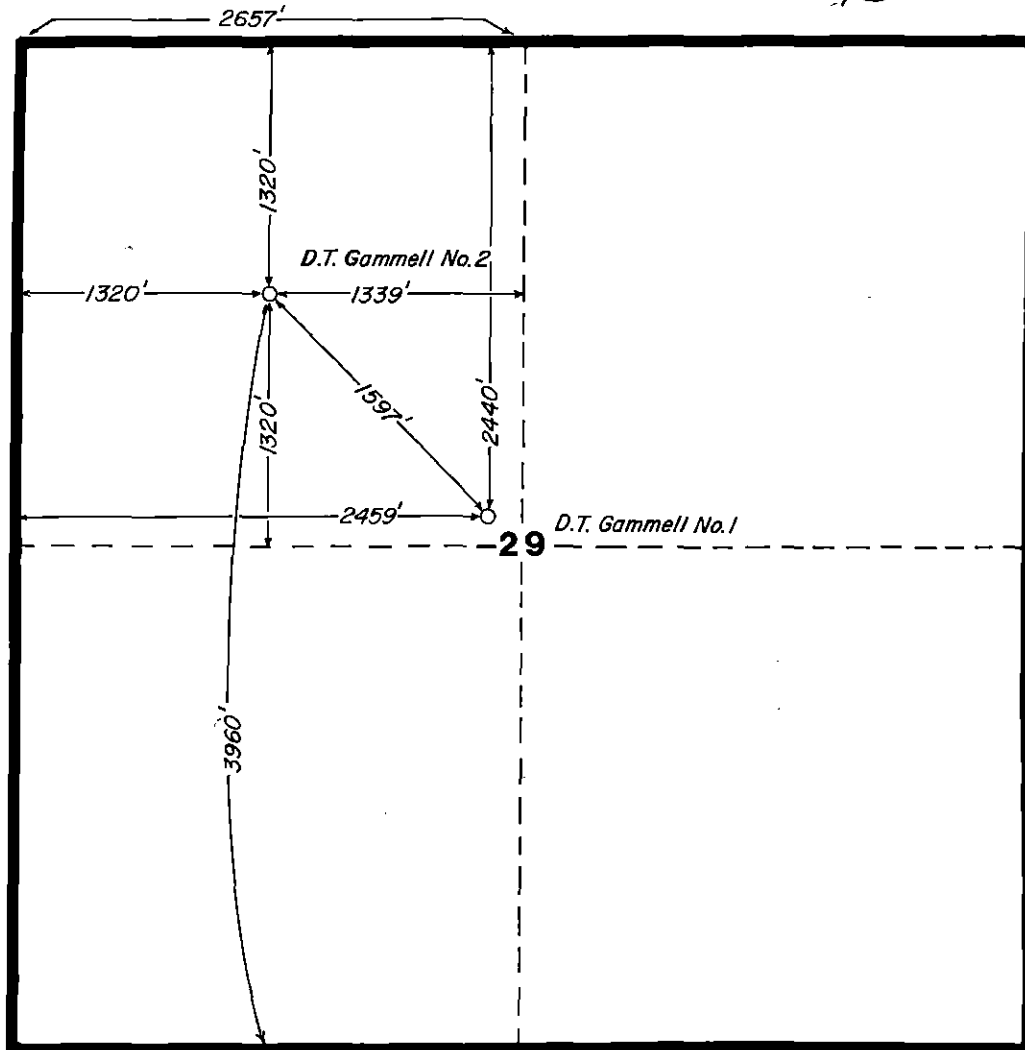
CONSERVATION DIVISION
Wichita, Kansas



County SEWARD State KANSAS

Township 34S Range 34W Section 29

15-175-20,982

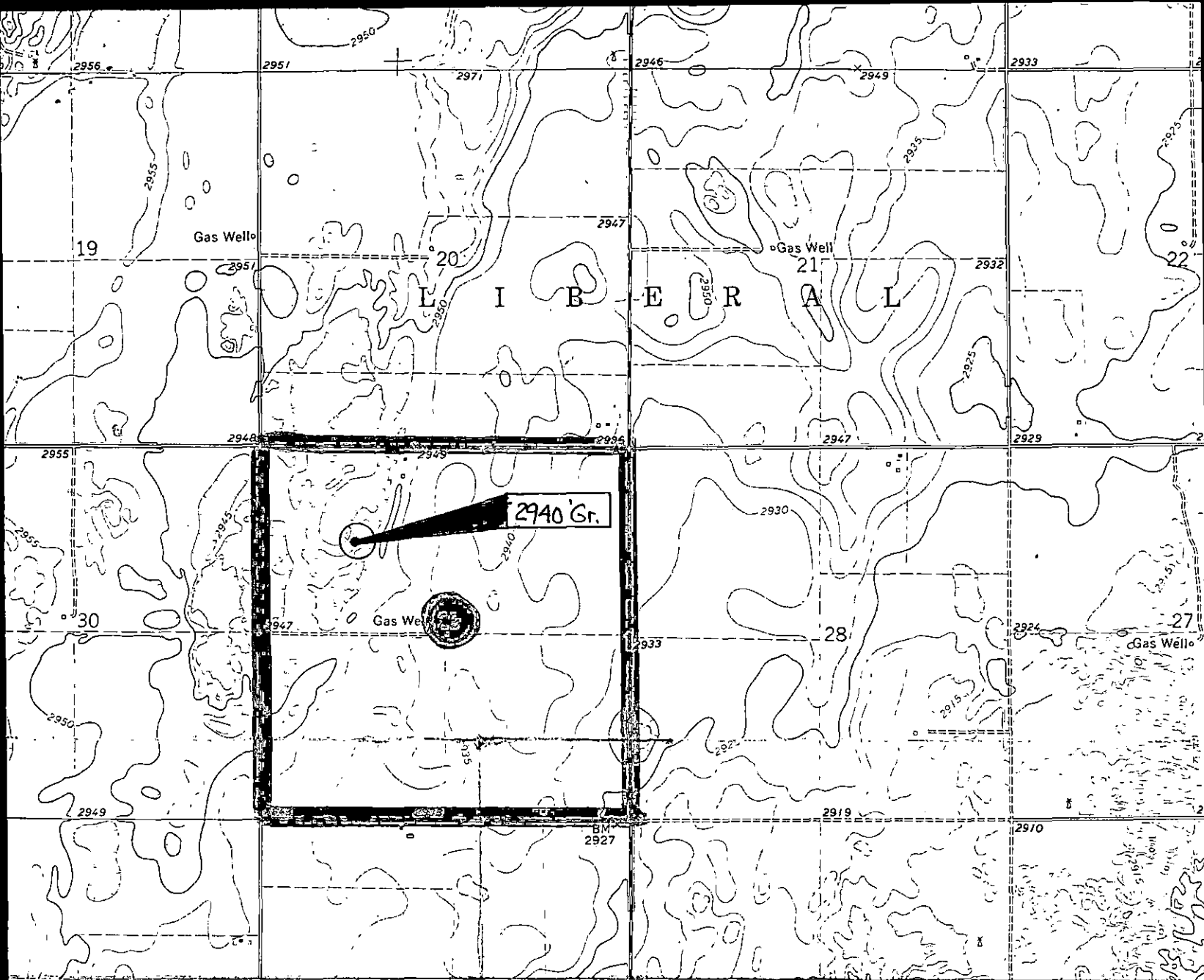


SF Santa Fe Minerals, Inc. <small>A DIVISION OF SANTA FE INTERNATIONAL CORPORATION Two California Towers • 1500 West 84 • Suite 1100 • Dallas, Texas 75208</small>	
LOCATION PLAT	
DALLAS	Drawn By: _____ Date: _____
GEOL. _____	GEOP. _____
DATE: _____	DATUM: _____
CONTOUR INT.: _____	SCALE: 1" = 1000'
	FILE NO. _____

RECEIVED
STATE CORPORATION COMMISSION

OCT 30 1987

CONSERVATION DIVISION
Wichita, Kansas



MAP SCALE: 1" = 2000'

Contour Interval: 5'

15-175-20,982

NOTE: If there is any any possible discrepancy in this elevation information, call Topographic Land Surveyors of Oklahoma Company (405) 843-4847

RECEIVED
STATE CORPORATION COMMISSION

OCT 30 1987

CONSERVATION DIVISION
Wichita, Kansas

TOPOGRAPHIC LAND SURVEYORS

OF OKLAHOMA COMPANY
Surveying and Mapping for the Oil & Gas Industries
6709 N. Classen Blvd.
Oklahoma City, Oklahoma 73116
Phone (405) 843-4847

WELL ELEVATION REPORT

SANTA FE MINERALS

Operator

D.T. Gammell #2

Lease

Well No.

1320'FNL-1320'FWL Section 29 34S-34W

Location

SEWARD

KANSAS

County

State

ELEVATION: _____ Kelly Bushing
 _____ Derrick Floor
 _____ 2940' Ground

October 22, 1987

Date

Yes No

Left at Rig

Run by RO