

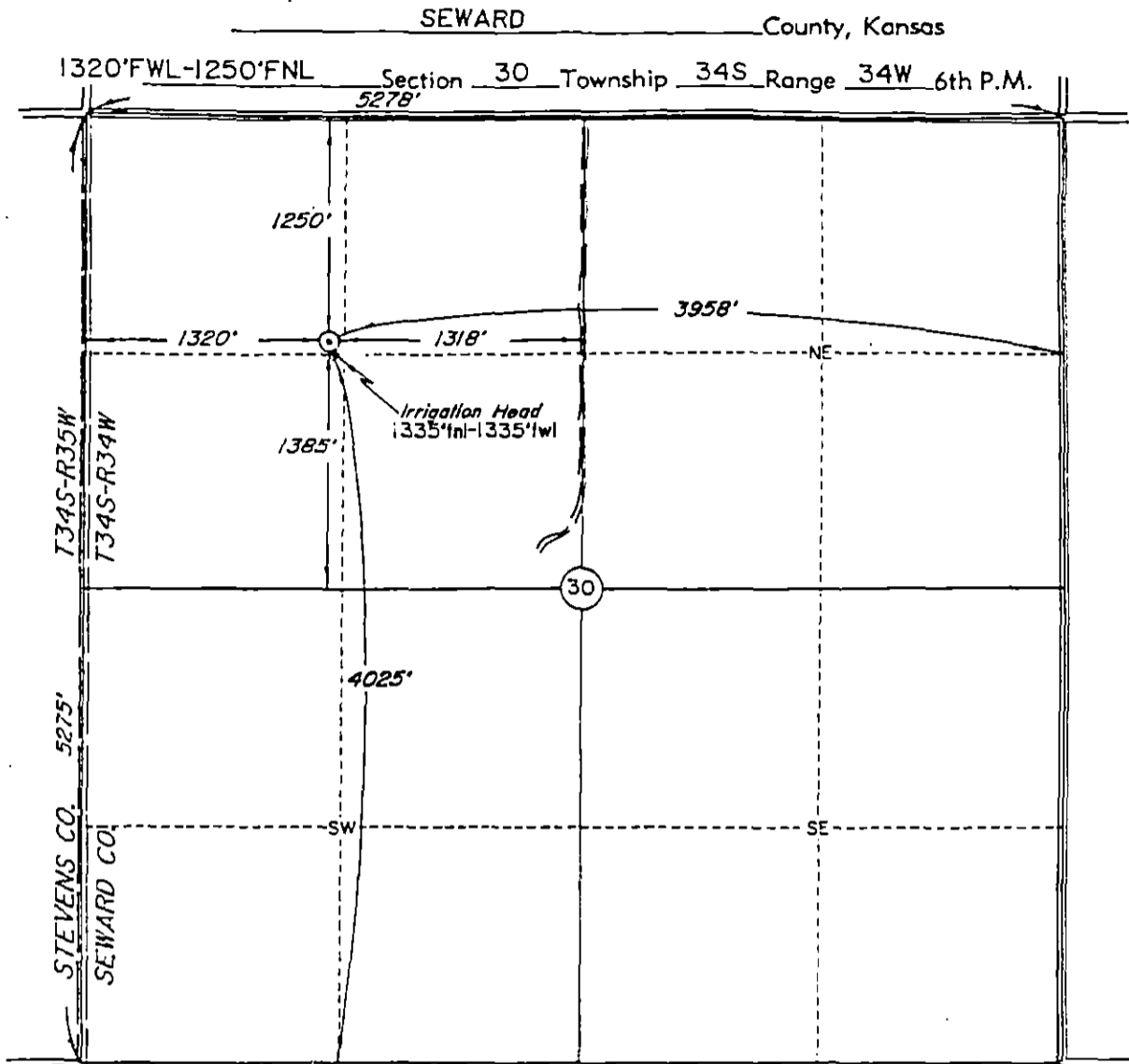
TOPOGRAPHIC LAND SURVEYORS

Surveying and Mapping for the Energy Industry

1006 E. 17TH ST. • HAYS, KANSAS 67601

TELEPHONES: LOCAL (913) 625-2683 • OKLA WATS (800) 522-4273 • OUT OF STATE WATS (800) 654-3219

API # **15-175-20,986** ⁰⁰⁻⁰⁰



Scale: 1" = 1000'

Date Staked October 28, 1987

This location has been very carefully staked on the ground according to the best official survey records, maps, and photographs available to us, but its accuracy is not guaranteed.

Review this plat and notify us immediately of any possible discrepancy.

Operator: SANTA FE MINERALS

ELEVATION:

2957' Gr. at Stake

Lease Name: ALBERTA Mueller Well No.: 2

Topography & Vegetation Location fell in alfalfa.

Reference Stakes or Alternate Location
Good Drill Site? Yes Stakes Set none

Best Accessibility to Location From West.

Distance & Direction
from Hwy Jct or Town From Jct. US 83 & US 270 & Tucker Road (North of Liberal),
go 8 miles West on Tucker Road to the Northwest Corner of Section 30, T34S-R34W.

CERTIFICATE:

I, Roger R. Rowe a Registered Land Surveyor and an authorized agent of Topographic Land Surveyors, do hereby certify that the above described well location was surveyed and staked on the ground as shown herein.

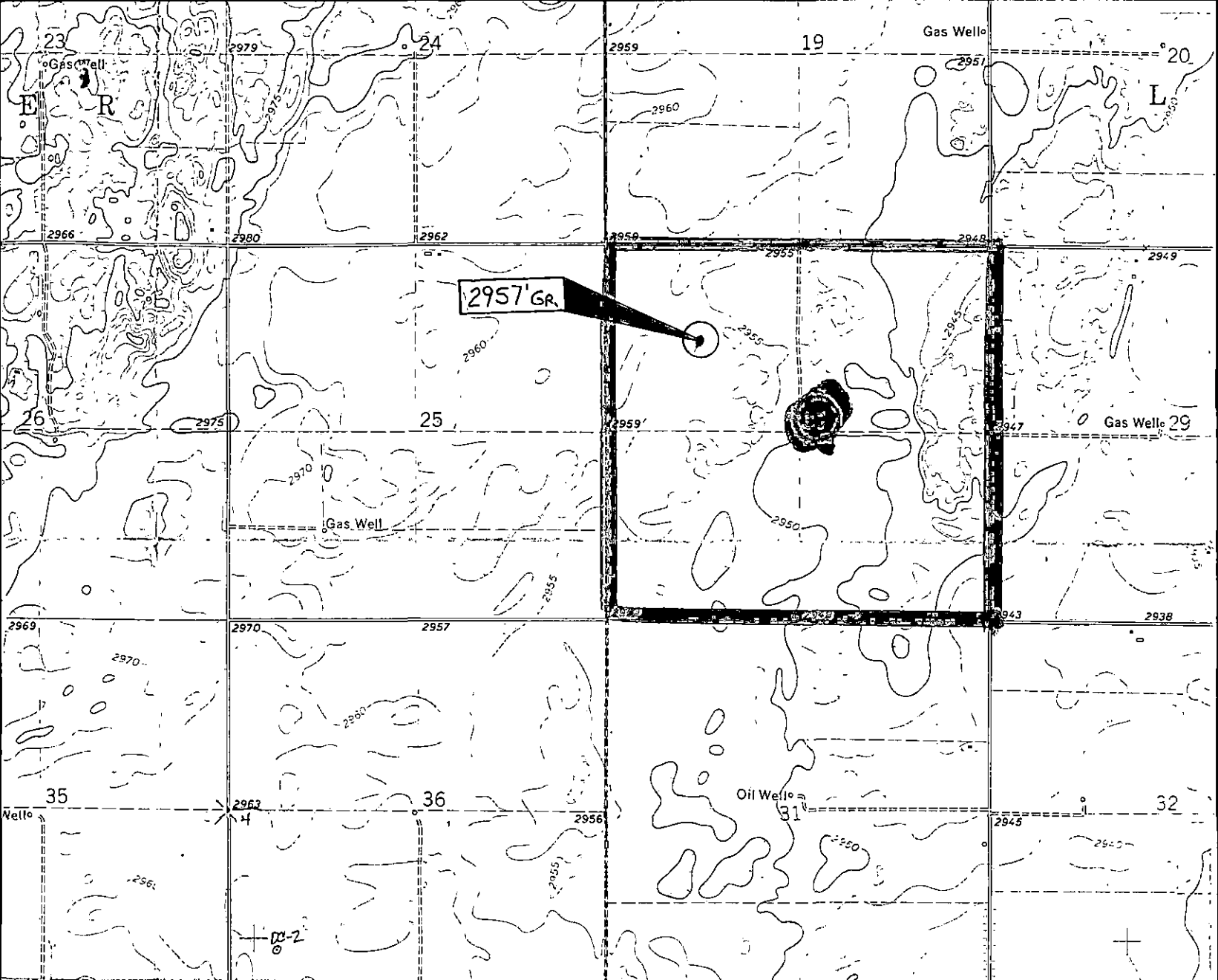
RECEIVED
STATE CORPORATION COMMISSION

Roger R. Rowe

NOV 3 1987

Kansas Reg. No. 839





API # 15-175-20,986

MAP SCALE: 1" = 2000'

Contour Interval: 5'

NOTE: If there is any any possible discrepancy in this elevation information, call **TOPOGRA** graphic Land Surveyors of Oklahoma STATE SURVEY COMMISSION Company (405) 843-4847

NOV 3 1987

CONSERVATION DIVISION
Wichita, Kansas

WELL ELEVATION REPORT

SANTA FE MINERALS

Operator

Alberta Mueller #2

Lease 1320'FNL-1320'FWL Section 30 Well No. 34S-34W

Location

SEWARD KANSAS

County

State

ELEVATION: _____ Kelly Bushing
 _____ Derrick Floor
2957' Ground

October 22, 1987

Date

Yes No

Left at Rig

Run by RO

TOPOGRAPHIC LAND SURVEYORS

OF OKLAHOMA COMPANY
Surveying and Mapping for the Oil & Gas Industries

6709 N. Classen Blvd.

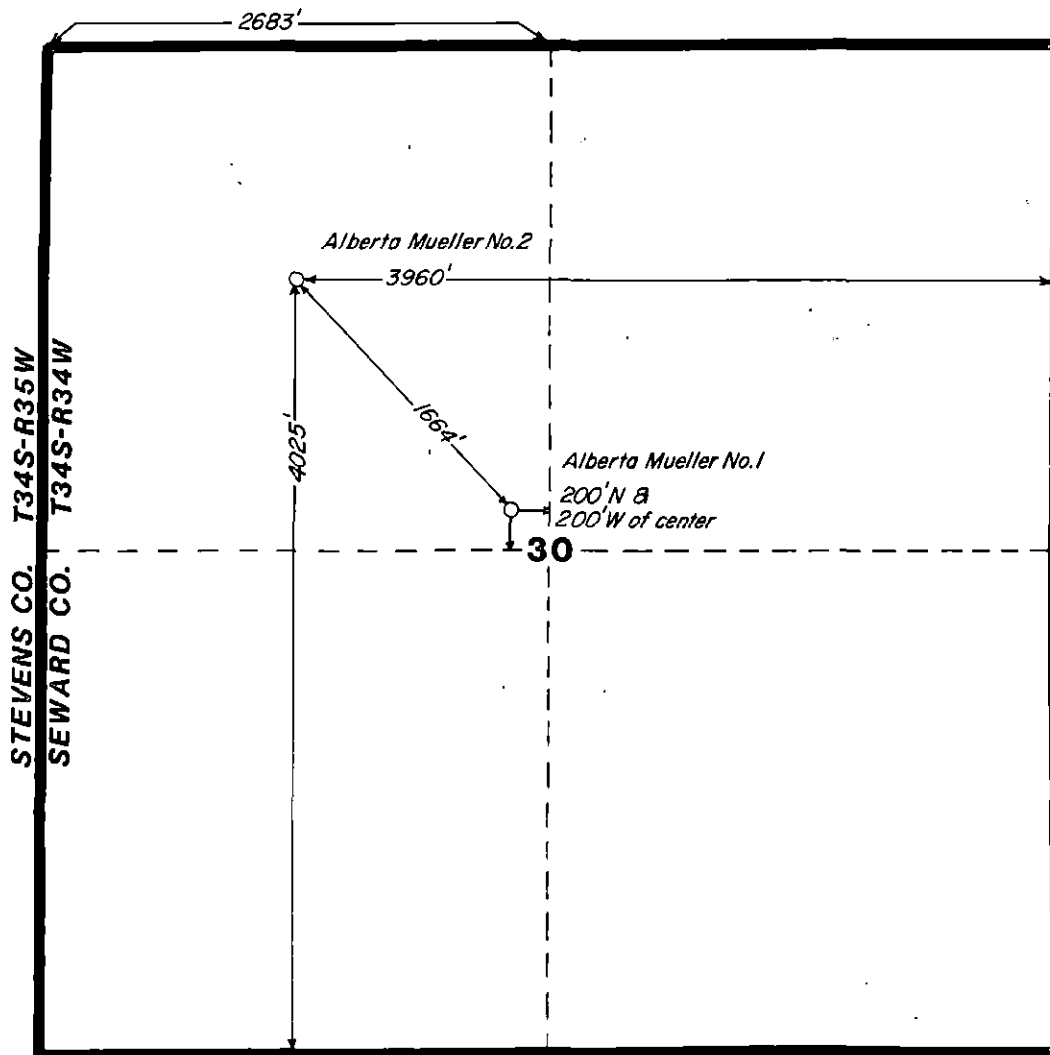
Oklahoma City, Oklahoma 73116

Phone 843-4847

API #
15-175-20,986

County SEWARD State KANSAS

Township 34S Range 34W Section 30



SF Santa Fe Minerals, Inc.	
A DIVISION OF SANTA FE INTERNATIONAL CORPORATION	
<p style="font-size: small;">(City: Dallas, Texas 75244) (Phone: 972-346-1100) (Telex: 346100)</p>	
LOCATION PLAT	
DALLAS	Drawn By _____ Date _____
DATE _____	DATE _____
CONTOUR INT. _____	FILE NO. _____
SCALE 1" = 1000'	

RECEIVED
STATE CORPORATION COMMISSION

NOV 3 1987

CONSERVATION DIVISION
Wichita, Kansas