

STATE OF KANSAS
STATE CORPORATION COMMISSION
CONSERVATION DIVISION
200 Colorado Derby Building
Wichita, Kansas 67202

FORM CP-1
Rev. 2/89
RECEIVED
STATE CORPORATION COMMISSION

SEP 17 1991

WELL PLUGGING APPLICATION FORM
(File One Copy)

CONSERVATION DIVISION
Wichita, Kansas

API NUMBER 15-189-20746 - 0000 (of this well).

(This must be listed; if no API# was issued, please note drilling completion date.)

WELL OWNER/OPERATOR MOBIL OIL CORPORATION OPERATOR'S LICENSE NO. 5208 7-92

ADDRESS 2319 NORTH KANSAS, LIBERAL, KS 67901 PHONE # (316) 6626-1160

LEASE (FARM) COULTER #3 UNIT WELL NO. 5 WELL LOCATION C SE COUNTY Stevens

SEC. 19 TWP. 33S RGE. 37W (E) or (W) TOTAL DEPTH 6267' PLUG BACK TD 6205'

Check One:

OIL WELL GAS WELL D & A SWD or INJ WELL DOCKET NO. _____

SURFACE CASING SIZE 9-5/8" SET AT 1737' CEMENTED WITH 925 SACKS

CASING SIZE 5-1/2" SET AT 6265' CEMENTED WITH 525 SACKS

PERFORATED AT 6030' - 6128'

CONDITION OF WELL: GOOD POOR CASING LEAK JUNK IN HOLE

PROPOSED METHOD OF PLUGGING SEE ATTACHED PLUGGING PROCEDURE

(If additional space is needed use back of form.)

IS WELL LOG ATTACHED TO THIS APPLICATION AS REQUIRED? NO* IS ACO-1 FILED? YES
(If not explain.) *Log on file at the KCC.

DATE AND HOUR PLUGGING IS DESIRED TO BEGIN UPON APPROVAL

PLUGGING OF THIS WELL WILL BE DONE IN ACCORDANCE WITH K.S.A. 55-101 et. seq. AND THE RULES AND REGULATIONS OF THE STATE CORPORATION COMMISSION.

NAME OF REPRESENTATIVE AUTHORIZED TO BE IN CHARGE OF PLUGGING OPERATIONS:

MIKE SCHECHTER PHONE # (316) 544-5528

ADDRESS P. O. BOX 400, HUGOTON, KS 67951

PLUGGING CONTRACTOR HALLIBURTON LICENSE NO. _____

ADDRESS LIBERAL, KS 67905 PHONE # (316) 624-3879

PAYMENT OF THE PLUGGING FEE (K.A.R. 82-3-118) WILL BE GUARANTEED BY OPERATOR OR AGENT.

SIGNED: R. Kelly
(Operator or Agent)

DATE: 9/14/91

①

Procedure:

RECEIVED
STATE CORPORATION COMMISSION

SEP 17 1991

REGISTRATION DIVISION
Wichita, Kansas

1. MIRU workover rig. Breakdown wellhead.
2. Dig out 9-5/8" surface casing.
3. Pull +/- 5950' of 7/8" & 3/4" rods. Pull 186 jts tbg then remove TBG Anchor ~5954. Pull 6 jts tbg, SN and MA.
4. Run bit and scraper on 2-3/8" tbg. Run a gauge ring to check for obstructions down hole. If an obstruction is found it would be up to the foreman to decide how to handle the problem.
5. RIH w/ and set CIBP ~6010' and drop 2 sx 50/50 Pozmix. RIH w/ 2-3/8" tbg to TOC ~5998. Fill to surface w/ 150 bbls 36 viscosity, 9#/gal mud.
6. POOH tbg. Salvage 5-1/2" csg ~1800' & POOH. While removing csg keep hole filled with mud.
7. MIRU cmt mixer.
8. RIH w/ 2-3/8" tbg ~3210'. Spot cmt plug from ~3210' to 2600' by balancing 80 sx (includes 10% excess) of 50/50 Pozmix by pumping 10 bbls mud after spotting cmt. Pull 22 jts tbg. Flush w/ 5 bbls mud. WOC 4 hrs. Tag TOC w/ tbg to confirm ~2600'.
9. Set 2-3/8" tbg ~1800'. This cmt spot begins in Open Hole (1800') and ends in Surface Csg (1650'). Spot cmt plug from 1800' to 1650' by balancing 70 sx (includes 25% excess) of 50/50 Pozmix by pumping 6.5 bbls mud after spotting cmt. Pull 10 jts tbg. Flush w/ 3 bbls of mud. WOC 4 hrs. Tag TOC w/ tbg to confirm ~1650'.
10. Set 2-3/8" tbg ~700'. Spot cmt plug from 700' to 400' by balancing 140 sx (includes 11% excess) of 50/50 Pozmix by pumping 1.5 bbls mud after spotting cmt. Pull 12 jts tbg. Flush w/ 1 bbls of mud. WOC 4 hrs. Tag TOC w/ tbg to confirm ~400'.
11. Set 2-3/8" tbg ~50'. Spot cmt plug from 50' to 5' by pumping 20 sx (includes 10% excess) of 50/50 Pozmix. POOH and lay down 2-3/8" tbg. Top off w/ cmt. WOC 4 hrs.
12. Cut 9-5/8" csg and 20" conductor pipe to 5' below surface and weld steel cap across csg stub stating well name, number, and date of plugging.
13. RDMO. Level and clean location.

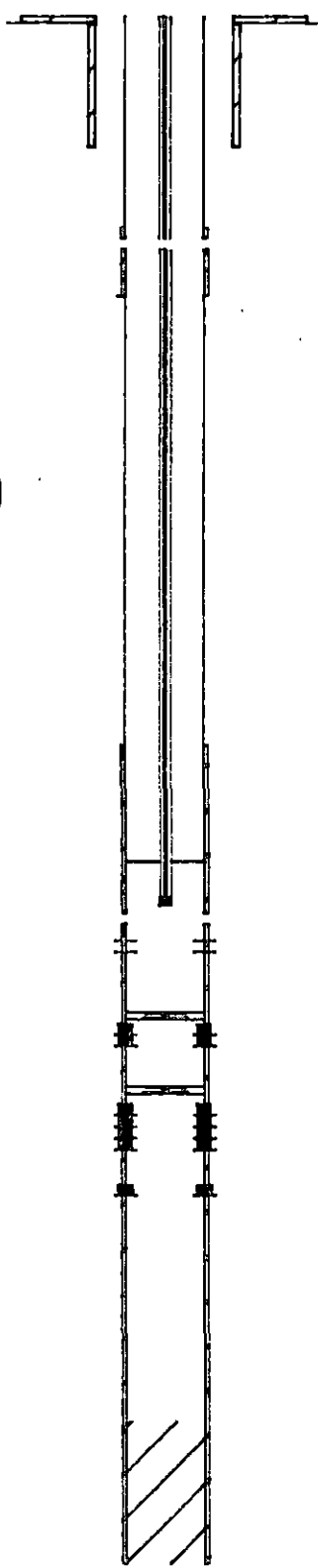
A. R. Benavides
A. R. Benavides
Summer Engineer

Coulter 3-5
 GENTZLER/MORROW FIELD
 STEVENS COUNTY, KANSAS

S19-T33S-R37W

CURRENT COMPLETION

KB ELEV: 3160'
 0 - 95' Cement 300 SX W/ 1" pipe
 95 - 1737' Cement 625 SX CMT
 2820 - 3207' Cement 190 SX
 3207 - 3210' Dvtool



0 - 80' 20" OD Casing Conductor
 0 - 1737' 9-5/8" OD 36#/ft K 55 Casing
 0 - 2950' 7/8" Rods

RECEIVED
 STATE CORPORATION COMMISSION

SEP 17 1991

COLUMBIANA COUNTY, MISSOURI
 Winona, Kansas

Initial Completion 09/26/84
 Acidized w/ 2600 gal MSR water
 Frac'd w/ 44M gals (75 Q) & 62M# 20/40
 Lower Morrow Completion

5257 - 6267' Cement 525 SX
 5786 - 5788' Anchor
 5954 - 5955' Seating Nipple
 5955 - 5985' Mudanchor

0 - 5985' 2.375" OD 4.6#/ft J 55 Tubing, Not All Tbg
 2950 - 5954' 3/4" Rods
 6030 - 6036' Perfs L. MORROW 3 SPF
 6064 - 6072' Abandoned Perfs L. MORROW 4 SPF
 6094 - 6111' Abandoned Perfs L. MORROW 2 SPF
 6124 - 6128' Abandoned Perfs L. MORROW 2 SPF

6059 - 6062' CIBP NO CMT PLUG

6087 - 6090' CIBP 1/2 SX, TOC 6086'

6214 - 6267' Cement Plug

0 - 6265' 5-1/2" OD 15.5#/ft K 55 Casing

ARB/ Summer Engineer

PBTD: 6205'
 TD: 6267'

Mobil - PRISM

Coulter 3-5
GENTZLER/MORROW FIELD
STEVENS COUNTY, KANSAS

S19-T33S-R37W

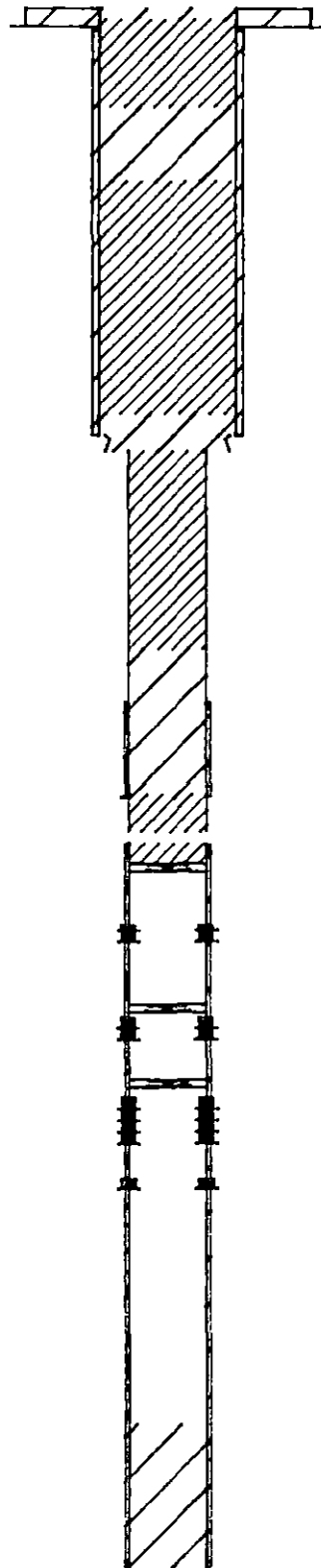
RECEIVED
STATE CORPORATION COMMISSION

PROPOSED COMPLETION

SEP 17 1991

KB ELEV: 3160'

- 5 - 80' 20" OD Casing Conductor
- 5 - 95' Cement 300 SX W/ 1" pipe
- 95 - 1737' Cement 625 SX CMT



- 5 - 50' Cement Plug 20 SX
- 50 - 400' Fill 9#/gal, 36 visc mud
- 400 - 700' Cement Plug 140 SX

700 - 1650' Fill 9#/gal, 36 visc mud

- 5 - 1737' 9-5/8" OD 36#/ft K 55 Casing
- 1650 - 1737' Cement Plug 40 SX
- 1737 - 1800' Cement Plug 30 SX
- 1800 - 2600' Fill 9#/gal, 36 visc mud

1737 - 1800' 8.750" OD Openhole

2600 - 3210' Cement Plug 80 SX

- 2820 - 3207' Cement 190 SX
- 3207 - 3210' Dvtool
- 3200 - 6007' Fill 9#/gal, 36 visc mud
- 5257 - 6267' Cement 525 SX
- 6007 - 6010' CIBP 2 SX CMT
- 6059 - 6062' CIBP NO CMT PLUG
- 6087 - 6090' CIBP 1/2 SX, TOC 6086'

6030 - 6036' Abandoned Perfs L. MORROW 3 SPF

6064 - 6072' Abandoned Perfs L. MORROW 4 SPF

6094 - 6111' Abandoned Perfs L. MORROW 2 SPF

6124 - 6128' Abandoned Perfs L. MORROW 2 SPF

6214 - 6267' Cement Plug

1800 - 6265' 5-1/2" OD 15.5#/ft K 55 Casing

ARB/ Summer Engineer

PBTD: 6205'
TD: 6267'

Mobil - PRISM

Joan Finney
Governor

Jim Robinson
Chairman

Keith R. Henley
Commissioner

Rachel C. Lipman
Commissioner

Judith McConnell
Executive Director

Brian J. Moline
General Counsel



Kansas Corporation Commission

NOTICE OF RECEIPT OF WELL PLUGGING APPLICATION

September 17, 1991

Mobil Oil Corporation
2319 N Kansas
Liberal KS 67901

Coulter 3 Unit 5
API 15-189-20,746
C SE
Sec. 19-33-37W
Stevens County

Dear Operator:

This letter is to notify you that the Conservation Division is in receipt of your plugging proposal, form CP-1, for the above-captioned well.

Your CP-1 has been reviewed by the Conservation Division central office for completeness and to verify license numbers. The plugging proposal will now be forwarded to the district office listed below for review of your proposed method of plugging. Please contact the district office for approval of your proposed plugging method at least at five (5) days before plugging the well, pursuant to K.A.R. 82-3-113 (b). Failure to do so it punishable by an administrative penalty of up to \$1000.

It has recently come to my attention that the form CP-1 has been filed by operators other than the owner or operator of the well and without the consent of the owner or operator. The Conservation Division's review of form CP-1, either in the central or district office, does not include an inquiry into well ownership or the filing operator's legal right to plug the well.

This notice in no way constitutes authorization to plug the above-captioned well by persons not having legal rights of ownership or interest in the well. This notice is void after ninety (90) days from the above date.

Sincerely,

A handwritten signature in cursive script, appearing to read "David P. Williams".

David P. Williams
Production Supervisor

District: #1 304 W. McArtor
Dodge City, KS 67801
(316) 225-6760

Conservation Division
William R. Bryson
Director
200 Colorado Derby Bldg.
202 W. 1st Street
Wichita, Kansas 67202-1286
Telephone (316) 263-3238

Coulter 3-5
19-33-37
Stevens Co.

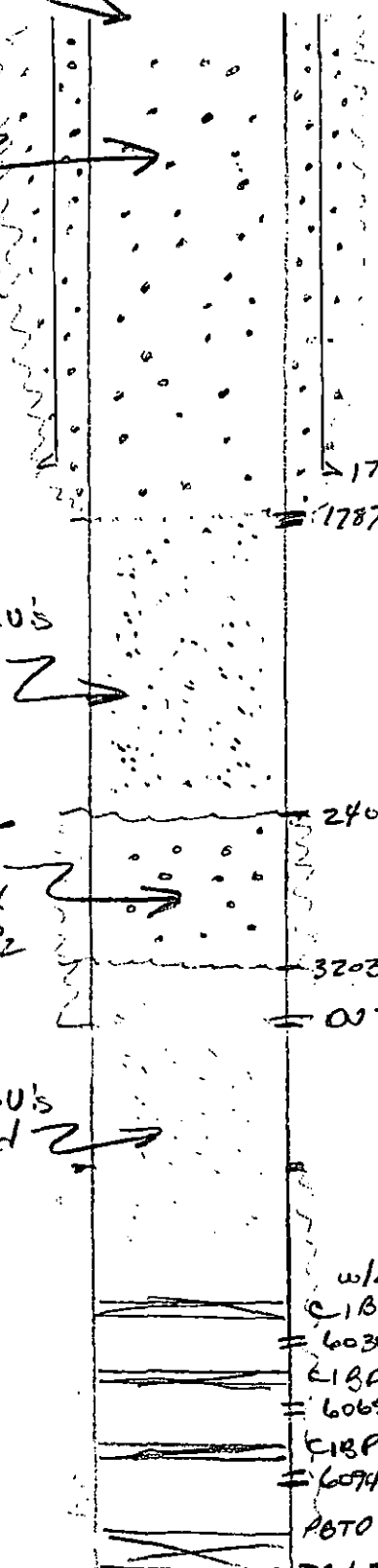
cut off of capped
Approx 5-6' below GL

Cin to
surface
60/40
Poz w/
80% G-1
450 SX

Surface 9 5/8 36# 1737
Cmt w/ 925 SX

Production 5 1/2 155# 6265
Cmt w/ 335 SX
190 SX

42-381 50 SHEETS 5 SQUARE
42-382 100 SHEETS 5 SQUARE
42-383 200 SHEETS 5 SQUARE



1737
1787 450 SX

9# 36U's
Mud

Balance
1/2
85 SX
50/50 RZ

2400
3203
03265

9# 36U's
Mud

w/ 25X Cmt
C1BP @ 6000
= 6030-6036
C1BP @ 6062
= 6065-6073
C1BP @ 6090 4/21/91
= 6074-6128
POTO 6205
TO 6290