

STATE OF KANSAS - CORPORATION COMMISSION
 PRODUCTION TEST & GOR REPORT

5-175-20769-00-00

Conservation Division

Form C-5 Revised

TYPE TEST: Initial **XX** Annual Workover Reclassification TEST DATE: 3-16-94

Company Charter Production Lease Haas Well No. 1/24

County Seward Location Location Section 24 Township 34S Range 32W Acres

Field Reservoir Tronto Pipeline Connection None

Completion Date 8-13-93 Type Completion(Describe) Oil Bridge Plate 4800 Plug Back T.D. Packer Set At

Production Method: Flowing Pumping **XX** Gas Lift Type Fluid Production Oil API Gravity of Liquid/Oil

Casing Size	Weight	I.D.	Set At	Perforations	To
5 1/2	15.5		5262	4405	4410

Tubing Size	Weight	I.D.	Set At	Perforations	To
2 7/8	6.5		4421		

Pretest: Starting Date 3-13-94 Time 10:30 Ending Date 3-15-94 Time 10:30 Duration Hrs. 48

Test: Starting Date 3-15-94 Time 10:30 Ending Date 3-16-94 Time 10:45 Duration Hrs. 24.25

OIL PRODUCTION OBSERVED DATA

Producing Wellhead Pressure Casing: 32 Tubing: Pump Separator Pressure 27 Choke Size Wide Open

Bbls./In.	Tank		Starting Gauge			Ending Gauge			Net Prod. Bbls.	
	Size	Number	Feet	Inches	Barrels	Feet	Inches	Barrels	Water	Oil
Pretest:	210	181439	2	2	43.42	2	8	53.44	1.67	10.02
Test:	210	181439	2	8	53.44	3	2	63.44		10.02
Test:	210	181439	3	2	63.46	3	8	73.48	1.67	10.02

GAS PRODUCTION OBSERVED DATA

Orifice Meter Connections Orifice Meter Range

Measuring Device	Run-Prover-Tester Size	Orifice Size	Meter-Prover		Differential: Psig or (Pd)	Static Pressure: Diff. Press. (hw) or (hd)	Gravity Gas (Gg)	Flowing Temp. (t)
			In. Water	In. Merc.				
Orifice Meter								
Critical Flow Prover								
Orifice Well Tester	2"	.125			8			

GAS FLOW RATE CALCULATIONS (R)

Coeff. MCFD (Fb)(Fp)(OWTC)	Meter-Prover Press. (Psia)(Pm)	Extension $\sqrt{hw \times Pm}$	Gravity Factor (Fg)	Flowing Temp. Factor (Ft)	Deviation Factor (Fpv)	Chart Factor (Pd)
			1.000	1.000		8.3

Gas Prod. MCFD Flow Rate (R): 8.3 Oil Prod. Bbls./Day: 10.02 Gas/Oil Ratio (GOR) = 813 Cubic Ft. per Bbl.

The undersigned authority, on behalf of the Company, states that he is duly authorized to make the above report and that he has knowledge of the facts stated therein, and that said report is true and correct. Executed this the 16th day of March 19 94

For Offset Operator

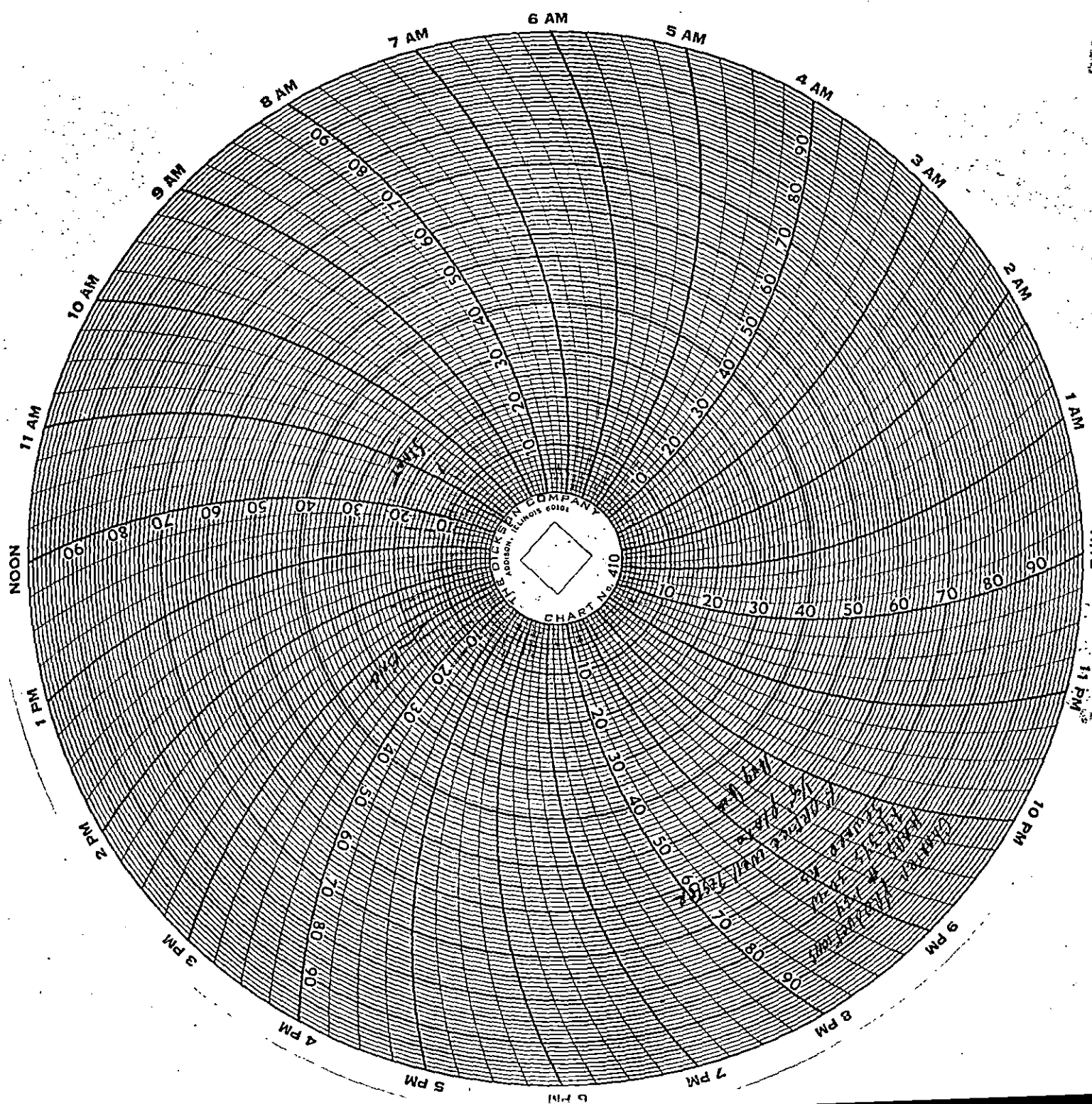
For State

Hosco Testing & Measurement

For Company

Richard [Signature] 11 1994

CONSERVATION DIVISION
 Wichita, Kansas



RECEIVED
STATE CORPORATION COMMISSION

MAY 11 1994

CONSERVATION DIVISION
Wichita, Kansas

HOSCO Testing and Measurement
 P. O Box 252
 Liberal, KS 67905-0252
 316-624-5636 or
 316-624-6258 - Unit 9328

Producer Charter Production
 Well Name Haas # 1-24
 Location 24-34S32W
 State Kansas County Seward

Csg _____ Wt _____ Set @ _____ TD _____ PB _____
 Tbg _____ Wt _____ Set @ _____ SN _____ Pkr _____
 Perfs. _____ to _____ to _____ to _____ to _____
 _____ Meter _____ Taps _____ Orifice 0.125 Pcr _____ Tcr _____
 Gg _____ API _____ @ _____ GM _____ Reservoir _____

RECEIVED
 CORPORATION COMMISSION
 MAY 11 1994
 CONSERVATION DIVISION
 Wichita, Kansas

Date Time of Reading	Elap Time Hours	Wellhead Pressure Data						Measurement Data				Liquids		Type Test:	Initial Annual	Special Retest	Ending Date
		Csg Psig	Δ P Csg	Tbg Psig	Δ P Tbg	BHP Psig	Δ P BHP	Press. Psig	Diff	Temp.	Q mcf/D	Cond bbbls	Water bbbls	GOR	XX		3-16-94
															Remarks Pertinent to Test Data Quality		
															2" Orifice Well Tester		
Sunday		3-13-94													210 Tank # 181438	210 H ² O Tank # 181439	H ² O
															9' 5"	2' 2"	3' 5"
Monday		3-14-94															
															9' 5"	2' 8"	3' 6"
Tuesday		3-15-94															
1045		34		Pumping				Not venting							Separator Pressure 25#		
1100		34						11			10.0						
1115		34						17			13.1				Separator Pressure 28#		
Wednesday		3-16-94															
1445	28.0	32		Pumping				2			3.92			Separator Pressure 25# 3' 8" 3" 7"			
1500		32						8			8.3	1.67	10.02	Separator Pressure 27#			