

STATE CORPORATION COMMISSION OF KANSAS
OIL & GAS CONSERVATION DIVISION
WELL COMPLETION FORM
ACO-1 WELL HISTORY
DESCRIPTION OF WELL AND LEASE

ORIGINAL

API NO. 15- 119-20,834-00-00 JUN 1 7 1992
County Meade **CONFIDENTIAL**
NE-SW FROM **CONFIDENTIAL** Rge. 28W ^E _{X W}

Operator: License # 30129
Name: Eagle Creek Corporation
Address 107 N. Market
Suite 509
City/State/Zip Wichita, KS 67202

1980' Feet from SM (circle one) Line of Section
3300' Feet from SM (circle one) Line of Section
Footages Calculated from Nearest Outside Section Corner:
NE, SE, NW or SW (circle one)
Lease Name Ross Well # 5-17
Field Name Irish Flats

Purchaser: _____
Operator Contact Person: William D. Harrison
Phone (316) 264-8044

Producing Formation _____
Elevation: Ground 2458 KB 2469
Total Depth RTD 6500' PBD 5686 KB

Contractor: Name: Cheyenne Drilling
License: 5382

Amount of Surface Pipe Set and Cemented at 1624 Feet
Multiple Stage Cementing Collar Used? X Yes _____ No
If yes, show depth set 3441 Feet

Wellsite Geologist: Dave Callewaert

If Alternate II completion, cement circulated from 3441
feet depth to 2578 w/ 135 c1 "h" sx cat.

Designate Type of Completion
New Well _____ Re-Entry _____ Workover _____
Deeping
 Oil _____ SWD _____ SIGW _____ Temp. Abd.
 Gas _____ ENHR _____ SIGW _____
_____ Dry Other (Corp. MSW, Expl., Cathodic, etc)
Delayed Comp.

Drilling Fluid Management Plan
(Data must be collected from the Reserve Pit)
Chloride content 2500 ppm Fluid volume 800 bbls
Dewatering method used dry naturally

If Workover/Re-Entry: old well info as follows:
Deeping
Operator: Ensign Operating Co.
Well Name: same
Comp. Date 6/24/91 Old Total Depth 5450

Location of fluid disposal if hauled offsite: _____

Deepening _____ Re-perf. _____ Conv. to Inj/SWD
_____ Plug Back _____ PBDT
_____ Commingled _____ Docket No. _____
_____ Dual Completion _____ Docket No. _____
_____ Other (SWD or Inj?) _____ Docket No. _____

Operator Name RECEIVED
KANSAS CORPORATION COMMISSION
Lease Name _____ License No. _____
Quarter JAN 31 1992p. S Rng. _____ E/W

Took over 6/25/91

6/17/91 6/30/91 delayed
Spud Date Date Reached TD Completion Date

County _____ Docket No. _____
CONSERVATION DIVISION
WICHITA, KS

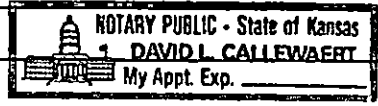
INSTRUCTIONS: An original and two copies of this form shall be filed with the Kansas Corporation Commission, 200 Colorado Derby Building, Wichita, Kansas 67202, within 120 days of the spud date, recompletion, workover or conversion of a well. Rule 82-3-130, 82-3-106 and 82-3-107 apply. Information on side two of this form will be held confidential for a period of 12 months if requested in writing and submitted with the form (see rule 82-3-107 for confidentiality in excess of 12 months). One copy of all wireline logs and geologist well report shall be attached with this form. ALL CEMENTING TICKETS MUST BE ATTACHED. Submit CP-4 form with all plugged wells. Submit CP-111 form with all temporarily abandoned wells.

All requirements of the statutes, rules and regulations promulgated to regulate the oil and gas industry have been fully complied with and the statements herein are complete and correct to the best of my knowledge.

Signature William D. Harrison
Title President Date 1/28/92

Subscribed and sworn to before me this 28th day of JANUARY 1992.

Notary Public Dave Callewaert
Date Commission Expires 6/27/93



K.C.C. OFFICE USE ONLY
F _____ Letter of Confidentiality Attached
C _____ Wireline Log Received
C _____ Geologist Report Received
Distribution
 KCC _____ SWD/Rep _____ NGPA
 KGS _____ Plug _____ Other (Specify) _____

P1

Operator Name Eagle Creek

Lease Name ROSS

Well # 5-17

Sec. 17 Twp. 34S Rge. 28W

East

County Meade

West

INSTRUCTIONS: Show important tops and base of formations penetrated. Detail all cores. Report all drill stem tests giving interval tested, time tool open and closed, flowing and shut-in pressures, whether shut-in pressure reached static level, hydrostatic pressures, bottom hole temperature, fluid recovery, and flow rates if gas to surface during test. Attach extra sheet if more space is needed. Attach copy of log.

Drill Stem Tests Taken Yes No
 (Attach Additional Sheets.)

Samples Sent to Geological Survey Yes No

Cores Taken Yes No

Electric Log Run Yes No
 (Submit Copy.)

Log Formation (Top), Depth and Datum Sample

Name	Top	Datum
see Ensign ACO-1 For their tops		
MORROW SHALE	5788	-3319
MORROW SAND	5830	-3361
CHESTER LIME	5874	-3405
CHESTER SHALE	6007	-3538
ST. GEN.	6238	-3769
ST. LOUISE	6354	-3885

List All E.Logs Run: See Ensign's ACO-1 for
 Logs they ran
 Microresistivity Dual Compensated
 Compensated Sonic Porosity
 Dual Induction

CASING RECORD New Used

Report all strings set-conductor, surface, intermediate, production, etc.

Purpose of String	Size Hole Drilled	Size Casing Set (In O.D.)	Weight Lbs./Ft.	Setting Depth	Type of Cement	# Sacks Used	Type and Percent Additives
See Ensign ACO-1							
production	7 7/8"	5 1/2"	14#	5686 KB	CL"C"	275	4% d20 25# D-29
					CL"H"	135	4% D20 5# d-42

ADDITIONAL CEMENTING/SQUEEZE RECORD

Purpose:	Depth Top Bottom	Type of Cement	#Sacks Used	Type and Percent Additives
<input type="checkbox"/> Perforate				
<input type="checkbox"/> Protect Casing				
<input type="checkbox"/> Plug Back TD				
<input type="checkbox"/> Plug Off Zone				

Shots Per Foot	PERFORATION RECORD - Bridge Plugs Set/Type Specify Footage of Each Interval Perforated	Acid, Fracture, Shot, Cement Squeeze Record (Amount and Kind of Material Used)	Depth
4	4874'-4879'	500 gal 15% fe acid + 3gal	4879'
4	5602'- 5605' see completion report attached	Morflo II, 1 gal 1osurf 300 & 1 gal HAI60	
	3000gal 15% fe, 10gal Morflo, 3 gal Penn 88, 3gal 1osurf300		

TUBING RECORD	Size	Set At	Packer At	Liner Run
	2 7/8"	4878		<input type="checkbox"/> Yes <input checked="" type="checkbox"/> No

Date of First, Resumed Production, SWD or Inj. Abandoned KC zone Delay com. Council Grove Producing Method Flowing Pumping Gas Lift Other (Explain)

Estimated Production Per 24 Hours	Oil Bbls.	Gas Mcf	Water Bbls.	Gas-Oil Ratio	Gravity

Disposition of Gas:
 Vented Sold Used on Lease
 (If vented, submit ACO-18.)

METHOD OF COMPLETION
 Open Hole Perf. Dually Comp. Commingled
 Other (Specify) _____

Production Interval _____

ORIGINAL

JUN 17

CONFIDENTIAL

ROSS # 5-17

API # 15-119-20,831

N 1/2 NE SW SECTION 17-T34S-R28W
MEADE COUNTY, KANSAS

RELEASED

OPERATOR: Eagle Creek Corporation

JUL 01 1992

CONTRACTOR: CHEYENNE DRILLING, INC.

FROM CONFIDENTIAL

ELEVATION: GL 2458'

KB 2469'

DST #1 WAS RUN BY ENSIGN OPERATING CO. SEE COPY OF THEIR
ACO-1

DST #2, 5577'-5610', 45-60 75-90, STRONG BLOW IN 4 MINUTES
CONTINUED THROUGH TEST, RECOVERED 1430' GAS IN PIPE, 70'
SO&GCM (GAS 30% OIL 5% MUD 65%), 70' O&GCM(GAS 60% OIL 20%
MUD15% FILTRATE 5%), IFP 63-78, FFP 110-138, SIP 786-1117,
TEMP 128^oF.

DST #3 6370'-6793', 30-30 30-30, VERY WEAK BLOW IN 18
MINUTES IFP NO BLOW FFP, RECOVERED 20' MUD, IFP 25-25,
FFP 36-36, SIP 1644-1476, TEMP 137^o.

RECEIVED
KANSAS CORPORATION COMMISSION

JAN 31 1992

CONSERVATION DIVISION
WICHITA, KS

ORIGINAL

KCC

RELEASED

JUN 17

JUL 01 1992

CONFIDENTIAL AEROM CONFIDENTIAL

Eagle Creek Corp.
Ross #5-17
NE SW
Sec. 17-348-28W
Meade Co., Ks.

KB 2469
GL 2450
RECEIVED
KANSAS CORPORATION COMMISSION

JAN 31 1992

- 7-10-91 Move in Braden-Daem, Inc. double drum.
- 7-11-91 Unloaded tubing and rods. Ran 4-7/8" bit on tubing. Tagged bridge plug. Shut down.
- 7-12-91 Rigged up power swivel and pump. Drilled bridge plug and circulated hole clean. Pulled tubing and bit. Ran Gamma Ray-Correlation-Bond log. Top of 1st stage cement at 3644'. Top of 2nd stage cement @ 2578'. Swabbed hole to 3000'. Perforated Kansas City 4874'-4879' w/4 shots/ft. 20 holes. Shut down.
- 7-13-91 No pressure. Fluid at 2100' from surface. Approximately 75' of oil on top. Swabbed to 5000' with shows of gas on each pull. 40 minute test 7 Bbls., 1 hour tests 4.1 Bbls.; 3.51 bbls. Oil is in a gassy emulsion w/ less than 6% oil. Shut down.
- 7-15-91 3000' of fluid above perfs. Swabbed down 69 barrels with less than 3% oil. Oil is fairly clean and breaking out. Measurement of percentage is accurate. Rigged up perforators and perforated Atoka 5602'-5605'. Ran tubing and Baker Model R packer. Set packer at 5593'. Swabbed down. Had gas shows but no oil. Swabbed 1 hour 7.02 barrels with no oil show.
- 7-16-91 800' of fluid in hole. Swabbed down 4.6 barrels @ 6% heavily oil cut mud. 1-1/2 hour swabbed 3.48 barrels w/ no show of oil. 1 hour swabbed .1 barrel w/ no show of oil. No fluid on next hourly swab. Halliburton acidized with 500 gallons 15% FE acid plus 3 gallons Morflo II 1 gallon Losurf 300 and 1 gallon HAI 60. Break down 1300 psi. Average treating pressure 875 psi @ 3.5 BPM. Overflushed 5 barrels. ISIP 230 psi, 5 minute 50 psi, 15 minute 0 psi. Load 49 barrels. Swabbed down 37 barrels w/ no show. 1 hour tests 2.32 barrels w/ 10% oil, 2.03 barrels w/ 10% oil, 2.03 barrels w/ 13% oil. 6 barrels of load to recover. Shut down.
- 7-17-91 1120' of fluid in hole. Swabbed down 6.5 barrels w/ 10% oil. Halliburton acidized w/ 3000 gallons 15% FE-88 acid plus 10 gallons Morflo II, 3 gallons Penn 88, 3 gallons Losurf 300. Pressure started at 750 psi and increased throughout job to 980 psi at 4 BPM. ISIP 400 psi, 5 minute 270 psi, 10 minute 230 psi, 15 minute 190 psi. Shut in wellhead and rigged down Halliburton. Waited 15 minutes and released remaining pressure. Load 119 barrels. Swabbed down 53.6 barrels. 1 hour swabbed 7.2 barrels w/ 20% oil. 58.2 barrels load to

CONSERVATION DIVISION
WICHITA, KS

ORIGINAL

RECEIVED
KANSAS CORPORATION COMMISSION
RELEASED

JAN 31 1992

JAN 01 1992

CONSERVATION DIVISION
WICHITA, KS
CONFIDENTIAL

recover.

7-18-91 1500' of fluid in hole. Swabbed down 9 barrels w/ 20% oil. 1 hour swabbing 6.09 barrels 20% oil, 4.06 barrels 18% oil, 2.90 barrels 21% oil, .87 barrel 20% oil, 2.03 barrels 19% oil, 1.45 barrels 22% oil, 1.16 barrels 28% oil, 1.16 barrels 24% oil. 29.48 barrels of load to recover.

7-19-91 800' of fluid in hole. Swabbed down 3 barrels w/ 25% oil. 26.48 barrels of load to recover. Released packer and pulled tubing. Installed 5-1/2" x 2" swaged nipple and valve in casing. Well is shut-in.

7-22-91 Rigged down double drum.

COPY
ORIGINAL

RECEIVED
KANSAS CORPORATION COMMISSION

KCC

JUN 17

CONFIDENTIAL

Eagle Creek Corp.
 Box 95-17
 NE 94
 Box 17-348-20W
 Wood Co., Ka.

JAN 31 1992

KB 2469'
GL 2458'

CONSERVATION DIVISION
WICHITA, KS

RELEASED

JUL 01 1992

12-12-91 Moved in Patrick Well Service double drum.

FROM CONFIDENTIAL

12-13-91 Rigged up double drum. Great Guns set cast iron bridge plug at 3330' (All depths per Dual Compensated Porosity log run 10/30/91). Fluid level @ 1700'. Perforated Council Grove 3254'-3259', 3177'-3179', 3158'-3162', 3136'-3141', 3119'-3121'. All intervals perforated w/2 shots per foot. Ran in hole with 2-3/8" tubing and Halliburton PPI packer set with 14' spacing between packer elements. Set packer above all perfs and swabbed down tubing.

12-14-91 25 psi tubing pressure. Fluid @ 1100'. Set packer above perfs @ 3254'-3259'. Swabbed down. Made two swab runs with no show of fluid or gas. Set packer above perfs @ 3177'-3179'. Swabbed down. Made two swab runs with no show of fluid or gas. Set above perfs @ 3158'-3162'. Swabbed down. Had 400' of fluid on 1st pull. Had 300' of fluid on second pull. Went to bottom with PPI packer. Tagged CIBP @ 3331' by tubing tally. Set packer and tested tubing and packer to 2500 psi. Dropped standing and RFC valves. Move packer across perfs @ 3254'-3259'. Spotted acid. Set packer. Acidized with 750 gallons 15% Fe @ 2.9 BPM 1220 psi. Set packer across perfs @ 3136'-3141'. Acidized with 750 gallons 15% FE @ 2.7 BPM @ 1100 psi. Set packer across perfs @ 3119'-3121'. Acidized with 300 gallons 15% Fe @ 2 BPM @ 1300 psi. Set packer above perfs @ 3254'-3259' and fished RFC and standing valves. Made 1 swab run. Well kicked off flowing gas and water to pit. Flowed for two hours. Making a full 2" stream of gas and water. Shut-in.

12-15-91 620 psi tubing pressure. Opened valve and started to blow down. Started making water as per yesterday. Hooked up Halliburton pump truck and pumped in 13 barrels of KCL water to kill well. Pulled PPI packer. Ran tubing in hole with EZ drill bridge plug and RTTS packer to 3232'. Set BP. Set packer and pressured plug to 2000 psi. Held OK. Pulled tubing and packer. Ran tubing with EZ SV cement retainer and RTTS packer. Set retainer @ 3156'. Set RTTS @ 3144' and pressured retainer to 2000 psi. Set RTTS @ 3134' to test perfs 3136'-3141'. Swabbed down. Made 18 swab runs. Fluid @ 1300'-1700' on each run. No show of gas. Shut down.

COPY ORIGINAL

12-16-91 4 psi tubing pressure. No gas. Fluid level @ 1300'.
Set RTTS @ 3099' to swab perfs @ 3119'-3121' and
3136'-3141'. Made 5 runs hitting fluid @ 1300'-1700'.
Still no show of gas. Pulled tubing and RTTS.
Shut well in. Released rig.

RECEIVED

KANSAS CORPORATION COMMISSION

JAN 31 1992

CONSERVATION DIVISION
WICHITA, KS

Not Prorated

CO-7

PLAT AND CERTIFICATION OF ACREAGE ATTRIBUTABLE TO AN OIL WELL

State Corporation Commission, Conservation Division
200 Colorado Derby Bldg. Wichita, Kansas 67202

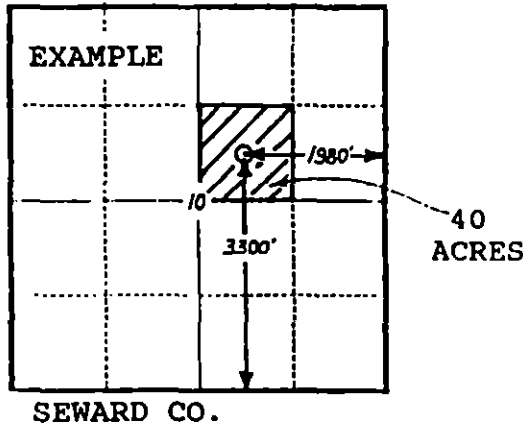
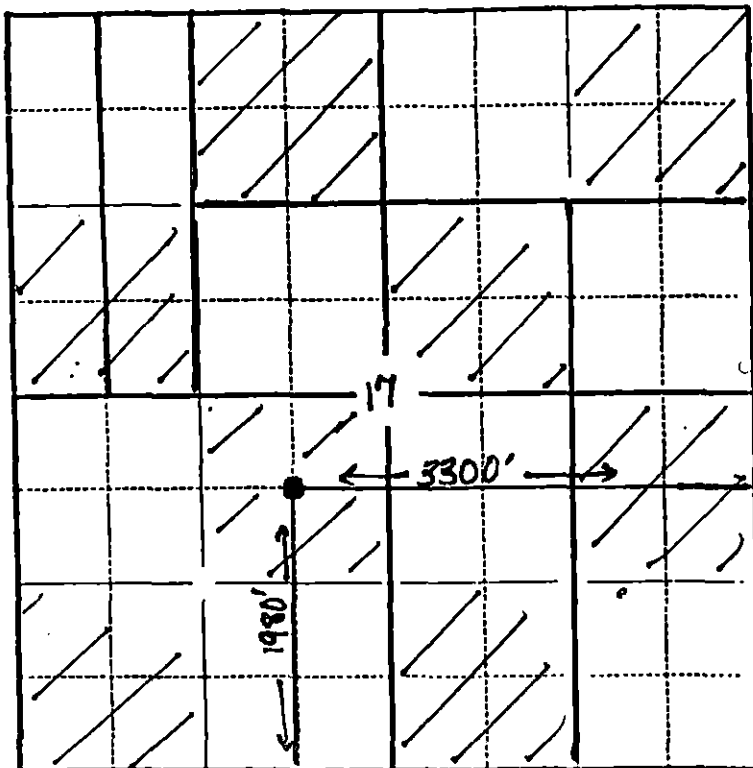
OPERATOR Ensign Operating Co.
LEASE NAME Ross
WELL NUMBER 5-17
FIELD Irish Flats
NUMBER OF ACRES ATTRIBUTED TO WELL 160

LOCATION OF WELL:

1980 feet north of SE corner
3300 feet west of SE corner
17 Sec. 34S T. 28W R.
COUNTY Meade

PLAT

(Show location of well and shade attributable acreage)
(Show footage to nearest lease or unit boundary line)



The undersigned hereby certifies that he is Susanne Goldsberry
for Ensign Operating Co. (Co.), a duly authorized agent, that all
information shown hereon is true and correct to the best of his knowledge and
belief, and that all acreage claimed as attributable to the well named herein
is held by production from that well.

Subscribed and sworn to before me on this 21st day of May 19 91
Susanne Goldsberry
Janet A. Campbell
Notary Public

My Commission expires 9/30/94
RECEIVED
STATE CORPORATION COMMISSION
WICHITA, KANSAS

(6-1989)

MAY 23 1991
CONSERVATION DIVISION
Wichita, Kansas