

TYPE

AFFIDAVIT OF COMPLETION FORM

ACO-1 WELL HISTORY

SIDE ONE

Two (2) copies of this form shall be filed with the Kansas Corporation Commission, 200 Colorado Derby Building, Wichita, Kansas 67202, within thirty (30) days after the completion of a well, regardless of how the well was completed.

Attach separate letter of request if the information is to be held confidential. If confidential, only file one copy. Information on Side One will be of public record and Side Two will then be held confidential.

Applications must be made on dual completion, commingling, salt water disposal, injection and temporarily abandoned wells.

X Attach one copy only wireline logs (i.e. electrical log, sonic log, gamma ray neutron log, etc.). (Rules 82-2-105 & 82-2-125) KCC# (316) 263-3238.

LICENSE # 5576 EXPIRATION DATE July 1983

OPERATOR MTS Limited Partnership API NO. 15-119-20592-00-00

ADDRESS P.O. Box 2009 COUNTY Meade

Amarillo, Texas 79189 FIELD Unspaced (640 acres) HORACE

\*\* CONTACT PERSON R. E. Mathis PROD. FORMATION Morrow

PHONE (806) 378-4886

PURCHASER Undetermined LEASE Adams

ADDRESS WELL NO. 1-9

DRILLING TMBR Drilling, Inc #6714 950 Ft. from North Line and

CONTRACTOR P.O. Drawer 10970 2100 Ft. from West Line of

ADDRESS Midland, Texas 79702-7970 the NW (Qtr.) SEC 9 TWP34S RGE 29W.

PLUGGING WELL PLAT

CONTRACTOR ADDRESS (Office Use Only)

KCC [checked]

KGS [checked]

TOTAL DEPTH 6530' PBD 6446'

SPUD DATE 12-15-82 DATE COMPLETED 2-10-83

ELEV: GR 2520' DF 2533' KB 2535'

DRILLED WITH (CABLE) (ROTARY) (AIR) TOOLS.

DOCKET NO. OF DISPOSAL OR REPRESSURING WELL BEING USED TO DISPOSE OF WATER FROM THIS LEASE

Amount of surface pipe set and cemented 1500 DV Tool Used? No

THIS AFFIDAVIT APPLIES TO: (Circle ONE) - Oil, (Gas) Shut-in Gas, Dry, Disposal, Injection, Temporarily Abandoned, OWWO. Other

ALL REQUIREMENTS OF THE STATUTES, RULES AND REGULATIONS PROMULGATED TO REGULATE THE OIL AND GAS INDUSTRY HAVE BEEN FULLY COMPLIED WITH.

A F F I D A V I T

Richard Erle Mathis, being of lawful age, hereby certifies that:

I am the Affiant, and I am familiar with the contents of the foregoing Affidavit. The statements and allegations contained therein are true and correct.

Richard Erle Mathis (Name)

SUBSCRIBED AND SWORN TO BEFORE ME this 16th day of February, 19 83.

MY COMMISSION EXPIRES: 4/13/85

Jan Rogers (NOTARY PUBLIC)

RECEIVED STATE CORPORATION COMMISSION

\*\* The person who can be reached by phone regarding any questions concerning this information.

FEB 22 1983

CONSERVATION DIVISION

XC: KCC (O+L), CEN RCDS, ACCTG, GAS CONT, RES ENG, MAT CONT, OPS (FILE), MID CON, ROSWELL, PARTNERS, D&M

SIDE TWO

ACO-1 WELL HISTORY

OPERATOR MTS Limited

LEASE Adams

SEC. 9 TWP. 34S RGE. 29W

**FILL IN WELL LOG AS REQUIRED:**

FORMATION DESCRIPTION, CONTENTS, ETC.	TOP	BOTTOM	NAME	DEPTH
<p><i>Show all important zones of porosity and contents thereof; cored intervals, and all drill-stem tests, including depth interval tested, cushion used, time tool open, flowing and shut-in pressures, and recoveries.</i></p>				
<p>DST #1 5751' - 5800' (Morrow)</p> <p>IHP 2741 IFP 58.9 30 min FFP 88.3 60 min ISIP 1852.6 IFIP 58.9 60 min FFP 88.3 120 min ISIP 2000 FHP 2741 BHT 130° REC 5711' of gas plus 90' mud</p>			<p>Wreford Council Grove Heebner Toronto Lansing KC Hodges Marmaton Cherokee Morrow Morrow SS Chester St Genevieve St Louis</p>	<p>2982' 3036' 4394' 4428' 4544' 5026' 5190' 5392' 5713' 5748' 5812' 6174' 6286'</p>
<p>DST #2 6106' - 6177' (Chester)</p> <p>IHP 2930.7 IFP 28.8 30 min FFP 28.8 60 min ISIP 43.2 IFP 28.8 60 min FFP 28.8 120 min ISIP 43.2 FHP 2930.7 BHT 135° Rec 10' drlg mud</p>				

**Report of all strings set — surface, intermediate, production, etc. CASING RECORD (New) or (Used)**

Purpose of string	Size hole drilled	Size casing set (in O.D.)	Weight lbs/ft.	Setting depth	Type cement	Sacks	Type and percent additives
Surface	17 1/4"	8 5/8"	24#	1500'	LT/H	750/200	2% CaCl/3% CaCl
Production	7 7/8"	5 1/2"	15.5#	6520'	H	300	5% KCL, 6# Gilsonite

**LINER RECORD**

**PERFORATION RECORD**

Top, ft.	Bottom, ft.	Sacks cement	Shots per ft.	Size & type	Depth interval
			1	3 1/8" Gun .35" entry	5748' - 5778'

Size	Setting depth	Packer set at
2 3/8"	5664'	None

**ACID, FRACTURE, SHOT, CEMENT SQUEEZE RECORD**

Amount and kind of material used	Depth interval treated
A/2400 gal 7% NE-FE + 32 BS	5748' - - 5778'
F/21,924 gal Versagel 1400 + 22,000 gals CO <sub>2</sub> + 54,000# 20/40 SD	5748' - - 5778'

Date of first production	Producing method (flowing, pumping, gas lift, etc.)	Gravity
WOPLC	Flowing	-
<b>RATE OF PRODUCTION PER 24 HOURS:</b>	Gas	Water
Oil	CAOF 21 M MCF	%
Trace	bbls.	bbls.
		TSTM CFPB
Disposition of gas (vented, used on lease or sold)	Perforations	
Vented	5748' - - 5778'	

PROGRAM  
FILE NO:  
22.24  
SERVICE  
SER NO:  
383681

PI SERIAL NO:  
82-205

OTHER SERVICES-  
DIL-SFL-GR  
LDT-CNT-GR  
ML-GR  
CST  
CYBERLOOK

TYPE FLUID IN HOLE: FRESH  
DENSITY: 9.2 LB/G  
VISCOSITY: 46.0 S  
PH: 9.5  
FLUID LOSS: 6.0 C3  
SOURCE OF SAMPLE: FLOWLINE  
RM: 0.852 DHMM AT 59.0 DEGF  
RMF: 0.579 DHMM AT 67.0 DEGF  
RMC: 0.967 DHMM AT 65.0 DEGF  
SOURCE RMF/RMC: PRESS /PRESS  
RM AT BHT: 0.410 DHMM AT 130. DEGF  
RMF AT BHT: 0.312 DHMM AT 130. DEGF  
RMC AT BHT: 0.508 DHMM AT 130. DEGF  
  
TIME CIRC. STOPPED: 1900 12/29  
TIME LOGGER ON BTM.: 0300 12/30  
  
MAX. REC. TEMP: 130.0 DEGF  
  
LOGGING UNIT NO: 8357  
LOGGING UNIT LOC: GREAT BEND  
RECORDED BY: INGRAHAM  
WITNESSED BY: ED NICHOLS/JOHNNY JAMES

REMARKS:  
  
CHLORIDES = 3400 PPM  
SONDE ECCENTERED BOWSPRING USED  
FILM SPLICE DUE TO RUNNING OUT OF DATA TAPE

EQUIPMENT NUMBERS-

IS 1069	IC 1026	LDS 1844	CNC 80
CNB 1428	PCD	CST	CCCA
CIM 149	IEM 1389	NSM 2876	SHM 1457

ALL INTERPRETATIONS ARE OPINIONS BASED ON INFERENCES FROM ELECTRICAL OR OTHER MEASUREMENTS AND WE CANNOT, AND DO NOT GUARANTEE THE ACCURACY OR CORRECTNESS OF ANY INTERPRETATIONS, AND WE SHALL NOT, EXCEPT IN THE CASE OF GROSS OR WILLFUL NEGLIGENCE ON OUR PART, BE LIABLE OR RESPONSIBLE FOR ANY LOSS, COSTS, DAMAGES OR EXPENSES INCURRED OR SUSTAINED BY ANYONE RESULTING FROM ANY INTERPRETATION MADE BY ANY OF OUR OFFICERS, AGENTS OR EMPLOYEES. THESE INTERPRETATIONS ARE ALSO SUBJECT TO OUR GENERAL TERMS AND CONDITIONS AS SET OUT IN OUR CURRENT PRICE SCHEDULE.

FILE

11

AFTER SURVEY TOOL CHECK SUMMARY

PERFORMED: 82/12/29  
PROGRAM FILE: LEP18 (VERSION 22.24 00/35/00)

JIG

	BEFORE	AFTER
NRAT	2.084	2.071

POROSITY CHANGE (LIME): -0.001

LDTL TOOL CHECK

LDT TOOL SERIAL NUMBER : 1844

BACKGROUND MEASURED

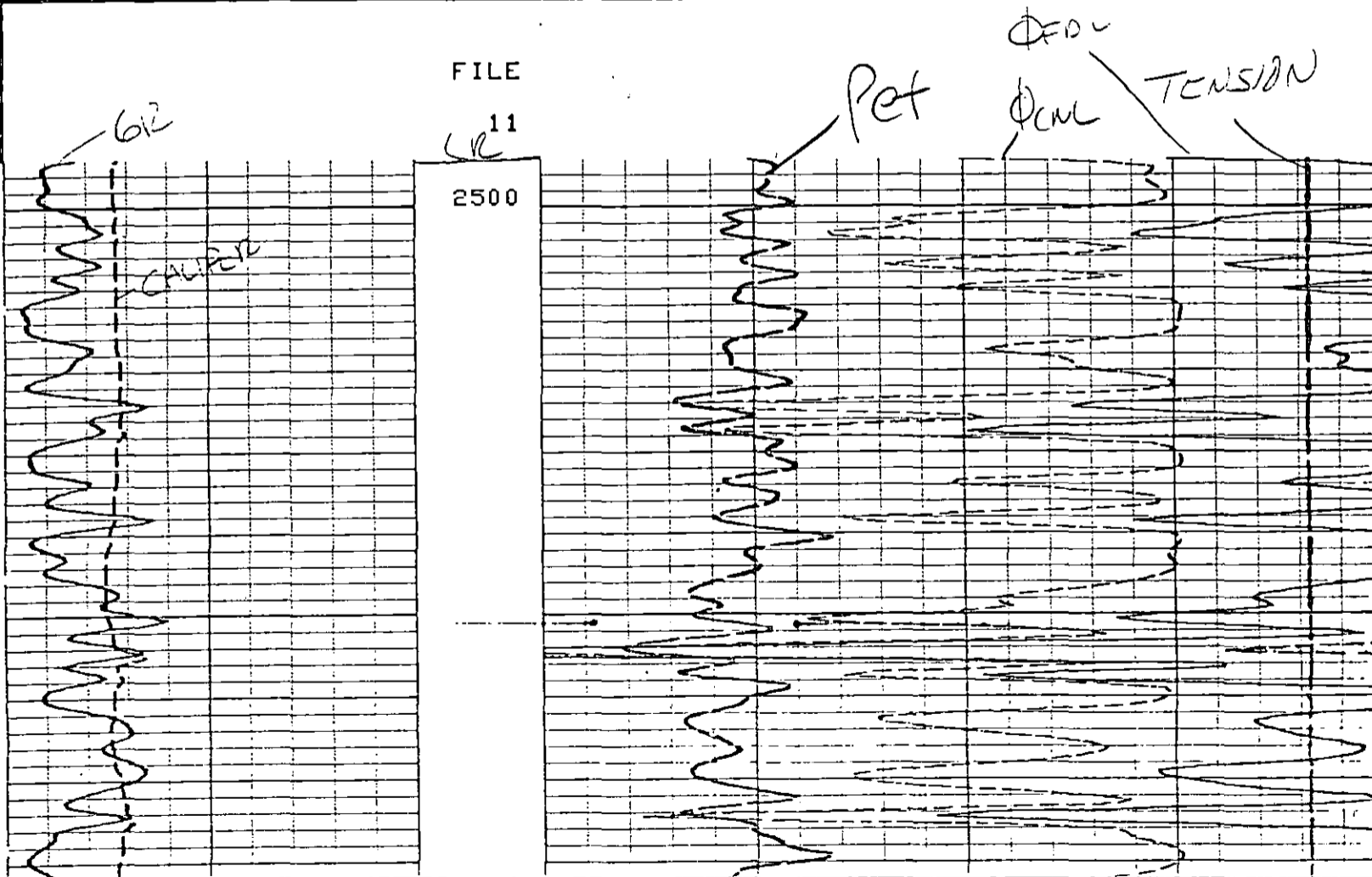
	BEFORE	AFTER	UNITS
LL	20.10	20.20	CPS
LU	79.68	78.93	CPS
LS	59.96	59.68	CPS
LITH	6.246	6.23	CPS
SS1	14.13	14.17	CPS
SS2	9.507	9.58	CPS

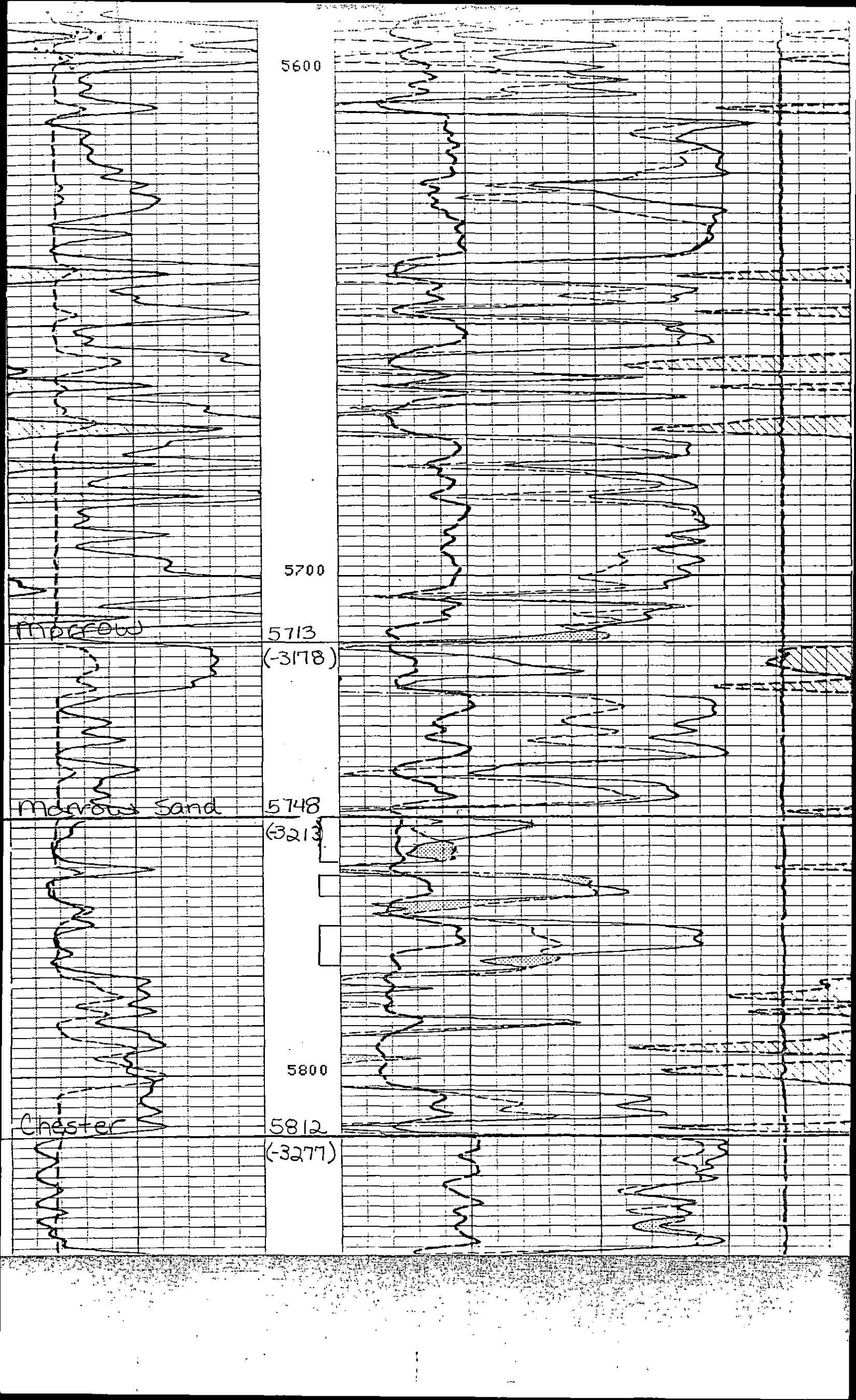
PCDB TOOL CHECK

	ZERO		PLUS		UNITS
	BEFORE	AFTER	BEFORE	AFTER	
MINV	0.0	0.0	5.0	5.0	OHMM
MNDR	0.0	0.0	5.0	5.1	OHMM

FILE  
13

		PEF ( )	TENS(LB )
		0.0	10.000   10000. 0.0
CALI(IN )			DPHI( )
6.0000	16.000	0.3000	-0.100
GR (GAPI)			NPHI( )
0.0	150.00	0.3000	-0.100
GR (GAPI)			NPHI( )
150.00	300.00	0.7000	0.3000





5600

5700

Inflow

5713  
(3178)

Marrow Sand

5748  
(3213)

5800

Chester

5812  
(3277)