

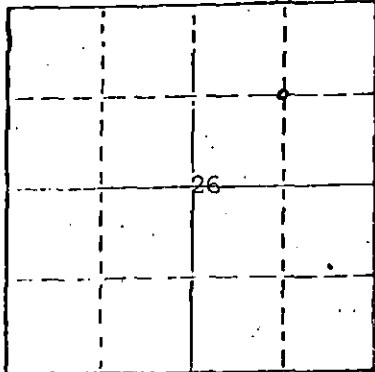
STATE OF KANSAS
STATE CORPORATION COMMISSION

WELL PLUGGING RECORD

Give All Information Completely
Make Required Affidavit
Mail or Deliver Report to
Conservation Division
State Corporation Comm.
245 North Water
Wichita, KS 67202

Seward County. Sec. 26 Twp. 34S Rge. 32 E/W
Location as "NE/CNW $\frac{1}{4}$ SW $\frac{1}{4}$ " or footage from lines
1320' FN & EL

Lease Owner Anadarko Production Company
Lease Name NOTT "A" Well No. 1
Office Address P. O. Box 351, Liberal, Kansas 67901
Character of Well (Completed as Oil, Gas or Dry Hole)
DRY HOLE



Locate well correctly on above
Section Plat

Date Well completed October 18 1980
Application for plugging filed November 25 1980
Application for plugging approved verbal October 17 1980
Plugging commenced October 17 1980
Plugging completed October 18 1980
Reason for abandonment of well or producing formation
DRY HOLE

If a producing well is abandoned, date of last production
19

Was permission obtained from the Conservation Division or
its agents before plugging was commenced? yes

Name of Conservation Agent who supervised plugging of this well Gil Balthazor
Producing formation _____ Depth to top _____ Bottom _____ Total Depth of Well 6400'
Show depth and thickness of all water, oil and gas formations.

OIL, GAS OR WATER RECORDS

CASING RECORD

FORMATION	CONTENT	FROM	TO	SIZE	PUT IN	PULLED OUT
				8-5/8"	1525	-0-

Describe in detail the manner in which the well was plugged, indicating where the mud fluid
was placed and the method or methods used in introducing it into the hold. If cement or other
plugs were used, state the character of same and depth placed, from _____ feet to
_____ feet for each plug set.

Spotted 50 sxs cmt plug 6000' to 5900', spotted 50 sxs cmt plug 4800'-4700'; spotted
50 sxs cmt plug 1525' to 1425'; filled hole w/heavy drilling mud, spotted 10 sxs cmt
from 40' to 0', 5 sxs cmt in rathole and mousehole.

(If additional description is necessary, use BACK of this sheet)

Name of Plugging Contractor Johnson Drilling Company

RECEIVED
CONSERVATION DIVISION
Wichita, Kansas, ss.
DEC - 3 1980 12-3-80

STATE OF KANSAS COUNTY OF SEWARD
Paul Campbell (employee of owner) or (owner or operator)

of the above-described well, being first duly sworn on oath, says: That I have knowledge of
the facts, statements, and matters herein contained and the log of the above-described well
as filed and that the same are true and correct. So help me God.

(Signature) Paul Campbell
P. O. Box 351, Liberal, Kansas 67901
(Address)

SUBSCRIBED AND SWORN TO before me this 1st day of December, 1980

STATE NOTARY PUBLIC
BEVERLY J. WILLIAMS
Seward County, Kansas
My Appt. Exp. 11/21/82

Beverly J. Williams
Notary Public.

My commission expires November 21, 1982

KANSAS

**WELL COMPLETION REPORT AND
DRILLER'S LOG**

S. 26 T. 34S R. 32 ~~SE~~ ^{SW}

Loc. 1320' FN & EL

County Seward

API No. 15 — 175 — 20,486-00-00
County Number

Operator
Anadarko Production Company

Address
P. O. Box 351, Liberal, Kansas 67901

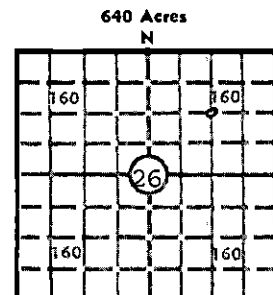
Well No. 1 Lease Name NOTT "A"

Footage Location
1320 feet from (N) ~~SE~~ line 1320 feet from (E) ~~SW~~ line

Principal Contractor Johnson Drilling Co. Geologist Mark Harvey

Spud Date 10/1/80 Date Completed 10/18/80 Total Depth 6400' P.B.T.D.

Directional Deviation not applicable Oil and/or Gas Purchaser DRY HOLE



Elev.: Gr. 2742'

DF 2750' KB 2751'

CASING RECORD

Report of all strings set — surface, intermediate, production, etc.

Purpose of string	Size hole drilled	Size casing set (in O.D.)	Weight lbs/ft.	Setting depth	Type cement	Sacks	Type and percent additives
Surface	12-1/4"	8-5/8"	24#	1525	Pozmix Common	600 200	4% gel 2% CaCl 3% CaCl

LINER RECORD

PERFORATION RECORD

Top, ft.	Bottom, ft.	Sacks cement	Shots per ft.	Size & type	Depth interval

TUBING RECORD

Size	Setting depth	Packer set at

ACID, FRACTURE, SHOT, CEMENT SQUEEZE RECORD

Amount and kind of material used	Depth interval treated

INITIAL PRODUCTION

Date of first production DRY HOLE	Producing method (flowing, pumping, gas lift, etc.)
RATE OF PRODUCTION PER 24 HOURS	Oil bbls. Gas MCF Water bbls. CFPB
Disposition of gas (vented, used on lease or sold)	Producing interval (s)

STATE RECEIVED
COMMISSION
DEC 5 1980
CONSERVATION DIVISION
Wichita, Kansas

INSTRUCTIONS: As provided in KCC Rule 82-2-125, within 90 days after completion of a well, one completed copy of this Drillers Log shall be transmitted to the State Geological Survey of Kansas, 4150 Monroe Street, Wichita, Kansas 67209. Copies of this form are available from the Conservation Division, State Corporation Commission, 245 No. Water, Wichita, Kansas 67202. Phone AC 316-522-2206. If confidential custody is desired, please note Rule 82-2-125. Drillers Logs will be on open file in the Oil and Gas Division, State Geological Survey of Kansas, Lawrence, Kansas 66044.

Operator Anadarko Production Company DESIGNATE TYPE OF COMP.: OIL, GAS, DRY HOLE, SWDW, ETC.:

Well No. 1 Lease Name NOTT "A" DRY HOLE

S 26 T 34S R 32W^E_W

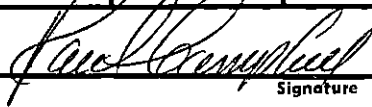
WELL LOG

Show all important zones of porosity and contents thereof; cored intervals, and all drill-stem tests, including depth interval tested, cushion used, time tool open, flowing and shut-in pressures, and recoveries.

SHOW GEOLOGICAL MARKERS, LOGS RUN, OR OTHER DESCRIPTIVE INFORMATION.

FORMATION DESCRIPTION, CONTENTS, ETC.	TOP	BOTTOM	NAME	DEPTH
Clay and Sand	0'	436'	LOGS: Schlumberger Dual Induction-SFL Compensated Neutron- Formation Density	
Redbed and Sand	436'	1517'		
Anhydrite	1517'	1527'		
Shale	1527'	2365'		
Lime and Shale	2365'	6400'		

USE ADDITIONAL SHEETS, IF NECESSARY, TO COMPLETE WELL RECORD.

Date Received	 Signature
	Paul Campbell, Division Production Manager Title
	November 25, 1980 Date