

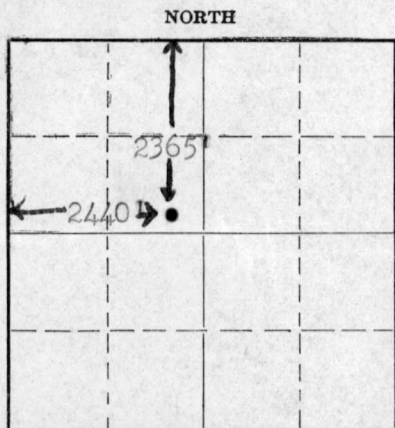
STATE OF KANSAS
STATE CORPORATION COMMISSION

WELL PLUGGING RECORD

Give All Information Completely
Make Required Affidavit
Mail or Deliver Report to:
Conservation Division
State Corporation Commission
800 Biting Building
Wichita, Kansas

Morton County. Sec. 35 Twp. 34 Rge. 43 (E) (W)

Location as "NE/CNW $\frac{1}{4}$ SW $\frac{1}{4}$ " or footage from lines 2440' fr W & 2365' fr N
Lease Owner Panhandle Eastern Pipe Line Company
Lease Name Leewe Well No. 1-35
Office Address Box 351, Liberal, Kansas
Character of Well (completed as Oil, Gas or Dry Hole) Dry Hole
Date well completed September 1, 19 55
Application for plugging filed September 14, 19 55
Application for plugging approved 19
Plugging commenced September 21, 19 55
Plugging completed September 22, 19 55
Reason for abandonment of well or producing formation Dry Hole



Locate well correctly on above
Section Plat

If a producing well is abandoned, date of last production 19
Was permission obtained from the Conservation Division or its agents before plugging was commenced? Yes

Name of Conservation Agent who supervised plugging of this well R. J. Phillippe
Producing formation None Depth to top Bottom Total Depth of Well 3085 Feet
Show depth and thickness of all water, oil and gas formations.

OIL, GAS OR WATER RECORDS

CASING RECORD

Formation	Content	From	To	Size	Put In	Pulled Out
Topeka	Water & gas	2798	2993'	10-3/4" OD	593	None
Lansing	Not perforated			7" OD	3066	995
Wabaunsee	Not perforated					

Describe in detail the manner in which the well was plugged, indicating where the mud fluid was placed and the method or methods used in introducing it into the hole. If cement or other plugs were used, state the character of same and depth placed, from feet to feet for each plug set.

Fifty sacks of cement pumped by Halliburton from 2957' to 2900' covered all open perforations not squeezed off during completion. The 7" OD casing was shot off at 995' and pulled. The hole filled with drilling mud and a cement plug pumped in the surface casing to a depth of 578', plug checked with SIM. The remaining pipe filled with mud 10 sacks of cement placed in top of surface casing which had been cut off 4 feet below ground level.

(If additional description is necessary, use BACK of this sheet)

Correspondence regarding this well should be addressed to L. W. Phillips, Panhandle Eastern Pipe Line Co.
Address Box 351, Liberal, Kansas

STATE OF Kansas, COUNTY OF Seward, ss.
L. W. Phillips (employee of owner) or (owner or operator) of the above-described well,

being first duly sworn on oath, says: That I have knowledge of the facts, statements, and matters herein contained and the log of the above-described well as filed and that the same are true and correct. So help me God.

(Signature) L. W. Phillips

(Address)

SUBSCRIBED AND SWORN to before me this 18th day of October, 1955.

My commission expires MY COMMISSION EXPIRES DEC. 9, 1957

22-5133-s 9-48-10M

PLUGGING
FILE SEC 35 Twp 34 R 43W
BOOK PAGE 150 LINE 1

RECEIVED
S. G. Blair
Notary Public.
STATE CORPORATION COMMISSION
OCT 19 1955 10-19-55
CONSERVATION DIVISION
Wichita, Kansas

DRILLER'S LOG

WELL NAME Leave # 1-35
 WELL LOCATION 2440' fr W & 2365'
fr N lines of
Sec. 35-34-43
 COUNTY Morton STATE Kansas
 72/20 OF AFTER ACID None MCF
 ROCK PRESSURE None LBS
 SOURCE OF DATA Driller's Report

COMPANY Panhandle Eastern Pipeline Co.
 CONTRACTOR Falcon-Seaboard Drlg. Co.
 ELEVATION 2527'
 DRILLING COMMENCED 8-5-55
 DRILLING COMPLETED 8-15-55
 WELL COMPLETED D&A
 WELL CONNECTED D&A

ROTARY LOG

<u>DESCRIPTION OF FORMATION</u>	<u>TOP</u>	<u>BOTTOM</u>
Surface Sand	0	41
Surface soil and Red Bed	41	650
Set 10-3/4" OD Casing at 650 feet with 350 sacks of Pozmix cement. Cement was circulated.		
Red Bed	650	700
Lime	700	740
Shale	740	810
Shale and Lime	810	1282
Lime	1282	1292
Shale	1292	1532
Lime and Shale	1532	1805
Shale, Lime and Sand	1805	1961
Lime and Shale	1961	2464
Lime	2464	2518
Lime and Shale	2518	3080
Lime	3080	3085
Set 7" OD Casing at 3074 feet with 300 sacks of pozmix cement.		

FORMATION TOPS

Wabaunsee 2593
 Topeka 2795
 Lansing 3029

PERFORATIONS

Perforated: 2985-93, 2977-82, 2961-68,
 2939-48, 2931-35, 2919-27, 2908-15,
 2902-06, 2868-76, 2832-42, 2820-26,
 and 2798-2803.

WELL TREATMENT RECORD

Acidized on 8-19-55 with 1000 gallons of 15% acid.
 Acidized on 8-22-55 with 2000 gallons of 15% acid.
 Acidized on 8-25-55 with 1000 gallons of 15% acid.
 Acidized on 8-30-55 with 1000 gallons of 15% acid.

PLUGGING
 WEL SEC 35 T 24 R 43 W
 ROCK PAGE 59 LINE 1

RECEIVED
 STATE CORPORATION COMMISSION
 SEP 15 1955
 CONSERVATION DIVISION
 Wichita, Kansas