

STATE OF KANSAS
STATE CORPORATION COMMISSION

WELL PLUGGING RECORD

Give All Information Completely
Make Required Affidavit
Mail or Deliver Report to:
Conservation Division
State Corporation Commission
800 Biting Building
Wichita, Kansas

Meads County, Sec. 12 Twp. 35 Rge. 30 (S) (W)

Location as "NE/CNW/SW" or footage from lines Center of SE/4 of NW/4

Lease Owner Columbian Fuel Corporation

Lease Name A. W. Adams Well No. K-2

Office Address P.O. Box 994, Liberal, Kansas.

Character of Well (completed as Oil, Gas or Dry Hole) Dry Hole

Date well completed August 29, 1953

Application for plugging filed August 31, 1953

Application for plugging approved September 1, 1953

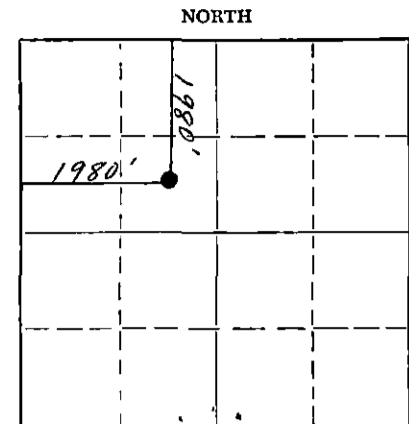
Plugging commenced September 14, 1953

Plugging completed September 24, 1953

Reason for abandonment of well or producing formation Dry

If a producing well is abandoned, date of last production None 19

Was permission obtained from the Conservation Division or its agents before plugging was commenced? Yes



Locate well correctly on above Section Plat

Name of Conservation Agent who supervised plugging of this well M. A. Rives

Producing formation None Depth to top Bottom Total Depth of Well 5930 Feet

Show depth and thickness of all water, oil and gas formations.

OIL, GAS OR WATER RECORDS

CASING RECORD

FORMATION	CONTENT	FROM	TO	SIZE	PUT IN	PULLED OUT
				13 3/8	584.00	None
				8 5/8	2497.17	943.80
				5 1/2	5886.00*	2530.40

Describe in detail the manner in which the well was plugged, indicating where the mud fluid was placed and the method or methods used in introducing it into the hole. If cement or other plugs were used, state the character of same and depth placed, from feet to feet for each plug set.

Perforations - 5851'-5862' -- squeezed with plastic
Perforations - 5817'-5844' -- squeezed with plastic
Perforations - 5798'-5804' -- squeezed with plastic
Perforations - 5769'-5782' --
5785'-5082' -- filled with mud
5082' -- Baker Bridge Plug
Perforations - 5082'-5022' -- filled with mud
5022' -- Baker Bridge Plug
Perforations - 5001'-5006' -- squeezed with 100 sks cement
4447' -- Top of cement
Perforations - 4383'-4388' --
4447'-4375' -- filled with sand
4375'-4335' -- Squeezed with 30 sks cement
4335'- 550' -- filled with mud
550'- 540' -- Rock bridge
540'- 509' -- filled with 25 sks cement
509'- 20' -- filled with mud
20'- 0' -- filled with 20 sks cement

(If additional description is necessary, use BACK of this sheet)

Name of Plugging Contractor Barnes & Son
Address Russell, Kansas

STATE OF Kansas COUNTY OF Seward ss.
I, Robert Grady, Supt. (employee of owner) of the above-described

well, being first duly sworn on oath, says: That I have knowledge of the facts, statements and matters herein contained and the log of the above-described well as filed and that the same are true and correct. So help me God.

(Signature) Robert Grady
Robert Grady
P.O. Box 994, Liberal, Kansas
(Address)

SUBSCRIBED AND SWORN TO before me this 25th day of September, 1953

Wallace B. Pedigo
Wallace B. Pedigo Notary Public.

My commission expires June 4, 1955

RECEIVED
STATE CORPORATION COMMISSION

SEP 26 1953
9-26-53

PLUGGING
FILE SEC 12 T 35 R 304
BOOK PAGE 126 LINE 1

LOG OF WELL

CODE GW 2044 Columbian Fuel Corp SHEET _____
(COMPANY)

STATE Kansas DISTRICT 72 COUNTY Meade

LEASE A.W. Adams WELL NO. 2-K SEC. 12 TWP. 35 R. 30

DATE OF LOG 9-28-53 LOCATION IN SEC. 1980' From North & 1980' From West Line

LOCATION MADE 5-18-53 COMM. RIGGING UP 5-22-53 COMM. DRILLING 5-22-53 COMP. DRILLING 7-5-53

TOTAL DEPTH 5930' ELEVATION 2461.4' Ground STATE PERMIT NO. _____

DAY DRILLER Abe Hillsberry NIGHT DRILLER L.E. Gaberdial CONTRACTOR Helmerich & Payne Inc.

CABLE TOOLS FROM _____ TO _____ ROTARY TOOLS FROM _____ TO 5930'

OPEN FLOW CAPACITY _____ M. CU. FT. ROCK PRESSURE _____ GASOLINE CONTENT PER M. CU. FT. _____

DEPTH IN SAND Thru PRODUCING SANDS AND THICKNESS OF EACH None

PRODUCTION FIRST 24 HOURS _____ SETTLED PRODUCTION _____ STARTED PRODUCTION _____

DATE TUBED None SYPHON SET _____ SIZE _____ FEET _____

CASING RECORD

SIZE	WEIGHT	PUT IN WELL		PULLED OUT		LEFT IN WELL		SHOES		PACKERS		
		FEET	IN.	FEET	IN.	FEET	IN.	LENGTH	MAKE	KIND	LENGTH	SET AT
13 3/8"	48#	584'		None		584'						
8 5/8"	24#	2497.17'		944'		1553'						
5 1/2"	15.5#	5886'		2530'		3356'						

LINER: STATE SIZE AND WEIGHT _____ WHERE SET _____ FT. AND INS. BLANK _____ FT. AND INS. PERFORATED _____

HOW PUT TOGETHER _____ COUPLING _____ FLUSH-JOINT _____ INSERTED _____

REMARKS _____

EQUIPMENT RECORD

TUBING				SUCKER RODS			PUMPING OUTFIT
SIZE	WEIGHT	FEET	IN.	FEET	IN.	SIZE AND KIND	DESCRIPTION, KIND, SIZE, ETC.

KIND OF SHOT _____ SIZE OF SHOT QUARTS _____ NUMBER OF SHOTS _____

NUMBER OF SHELLS _____ SIZE OF SHELLS _____ INCHES, DIAMETER _____

LENGTH OF SHELLS _____ FT. _____ INS. SHOT FURNISHED BY _____ TOP OF SHOT _____

BOTTOM OF SHOT _____ ANCHOR _____ WELL BRIDGED TO _____

PRODUCTION BEFORE SHOT _____ PRODUCTION AFTER SHOT _____

NAME OF SHOOTER _____ SHOT INSPECTED _____ BY _____ (COMPANY EMPLOYEE)

COMMENCED DRILLING DEEPER _____ COMPLETED DRILLING DEEPER _____

TOTAL DEPTH _____ PRODUCTION FIRST 24 HOURS _____ SETTLED PRODUCTION _____

REMARKS: Dry Hole..Non Productive..Plugging Commenced 9-14-53 & CEIVED
Completed 9-24-53. STATE CORPORATION COMMISSION
 SEP 30 1953
 CONSERVATION DIVISION
 WICHITA, KANSAS

NOTE: IF WELL WAS DRY, STATE UNDER REMARKS, WHEN, HOW, AND BY WHOM PLUGGED. STATE UNDER REMARKS ANYTHING OF INTEREST NOT COVERED IN LOG. IF SPACE PROVIDED FOR REMARKS IS NOT SUFFICIENT WRITE ON BOTTOM OF LAST SHEET OF LOG.

A. W. ADAMS "K" WELL No. 2
SE NW SECTION 12-35S-30W
MEADE COUNTY, KANSAS
COLUMBIAN FUEL CORPORATION

CASING RECORD

SET 13-3/8" CASING @ 584' WITH 500 SACKS.
SET 8-5/8" CASING @ 2506' WITH 800 SACKS.
SET 5-1/2" CASING @ 5886' WITH 400 SACKS.

COMMENCED: MAY 22, 1953
COMPLETED: JULY 4, 1953

SAND, SHALE	0	155	CHERTY LIME, SHALE	5371	5398
SAND, SHALE, RED BED	155	668	LIME, SHALE	5398	5403
RED BED, SHALE, SAND, ANHYDRITE	668	1224	BROKEN LIME, SHALE	5403	5440
ANHYDRITE, SHALE	1224	1349	LIME, SHALE	5440	5559
ANHYDRITE, SHALE, SALT	1349	1518	BROKEN LIME, SHALE	5559	5642
SHALE, ANHYDRITE	1518	1558	LIME, SHALE	5642	5930
SANDY SHALE, ANHYDRITE	1558	1792			
ANHYDRITE, SHALE	1792	1887	TOTAL DEPTH	5930	
ANHYDRITE, SHALE, SALT STREAKS	1887	2002			
ANHYDRITE, SAND, SHALE	2002	2007			
ANHYDRITE, SHALE	2007	2247			
ANHYDRITE, SHALE, SALT	2247	2354			
ANHYDRITE, LIME	2354	2455			
SHALE, ANHYDRITE	2455	2496			
LIME, CHERT	2496	2511			
ANHYDRITE, LIME, SHALE	2511	2533			
ANHYDRITE, CHERTY LIME	2533	2548			
LIME, CHERT, SHALE	2548	2554			
LIME, SHALE, ANHYDRITE	2554	2678			
BROKEN CHERTY LIME, SHALE	2678	2747			
CHERTY LIME, SHALE	2747	2830			
LIME, SHALE, SOME CHERT	2830	2910			
LIME, SHALE	2910	3069			
LIME, SHALE, CHERT	3069	3188			
LIME, SOME SHALE STREAKS	3188	3453			
LIME, SHALE	3453	3671			
SHALE, LIME STREAKS	3671	3769			
SHALE, LIME	3769	3923			
SHALE, LIME, SHELLS	3923	3981			
SHALE, LIME	3981	3987			
SHALE	3987	3991			
SHALE, LIME, SHELLS	3991	4251			
SHALE	4251	4277			
SHALE, LIME	4277	4326			
SHALE, LIME, SHELLS	4326	4351			
LIME	4351	4357			
LIME (CHALKY)	4357	4370			
LIME, SHALE	4370	4456			
LIME	4456	4494			
LIME, SHALE	4494	4567			
LIME, SHALE, CHERT	4567	4611			
LIME, CHALK, SHALE	4611	4636			
LIME, SHALE, SOME CHERT	4636	4652			
LIME, SHALE	4652	4754			
LIME (SOME CHERT)	4754	4851			
HARD SANDY LIME, CHERT	4851	4901			
CHERTY LIME, SHALE	4901	5111			
LIME, SHALE STREAKS, CHERT	5111	5302			
LIME, SHALE	5302	5327			
CHERTY LIME, SHALE	5327	5352			
CHERTY LIME	5352	5371			

STATE OF OKLAHOMA)
) SS
COUNTY OF TULSA)

PLUGGING
FILE SEC 12 T 35 R 30W
BOOK PAGE 26 LINE 7

I HEREBY AFFIRM THAT THE ABOVE AND FOREGOING IS A TRUE AND CORRECT COPY OF THE LOG OF THE A. W. ADAMS "K" No. 2 WELL LOCATED IN THE SOUTHEAST QUARTER OF THE NORTHWEST QUARTER OF SECTION 12, TOWNSHIP 35 SOUTH, RANGE 30 WEST, MEADE COUNTY, KANSAS.

RECEIVED HELMERICH & PAYNE, INC.
STATE CORPORATION COMMISSION
SEP 30 1953
VICE PRESIDENT

CONSERVATION DIVISION
SUBSCRIBED AND SWORN TO BEFORE ME A NOTARY PUBLIC THIS 10TH DAY OF JULY, 1953.
NOTARY PUBLIC
COMMISSION EXPIRES MARCH 13, 1954.