

Give All Information Completely
Make Required Affidavit
Mail or Deliver Report to:
Conservation Division
State Corporation Commission
212 No. Market
Wichita, Kansas

WELL PLUGGING RECORD

Meade County. Sec. 20 Twp. 34S Rge. ----(E) 30 (W)

Location as "NE/CNW/SW" or footage from lines. C NW/4 NE/4

Lease Owner W. C. Pickens

Lease Name RAYMOND ADAMS Well No. L

Office Address 2000 Fidelity Union Tower - Dallas, Texas 75201

Character of Well (completed as Oil, Gas or Dry Hole) Dryhole

Date well completed November 23 19 67

Application for plugging filed November 30 19 67

Application for plugging approved Verbal Approval - November 23 19 67

Plugging commenced November 23 19 67

Plugging completed 5:30 pm November 23 19 67

Reason for abandonment of well or producing formation Dry Hole

If a producing well is abandoned, date of last production. --- 19 ---

Was permission obtained from the Conservation Division or its agents before plugging was commenced? Yes

NORTH

		XX	

Locate well correctly on above Section Plat

Name of Conservation Agent who supervised plugging of this well Eddie Eves - Sublete, Kansas

Producing formation None Depth to top Bottom Total Depth of Well 6602 Feet

Show depth and thickness of all water, oil and gas formations.

OIL, GAS OR WATER RECORDS

CASING RECORD

FORMATION	CONTENT	FROM	TO	SIZE	PUT IN	PULLED OUT
Morrow	Gas	5923	5928	8 5/8"	1497'	None

Describe in detail the manner in which the well was plugged, indicating where the mud fluid was placed and the method or methods used in introducing it into the hole. If cement or other plugs were used, state the character of same and depth placed, from feet to feet for each plug set.

Cement applied by pump truck. 35 sack plug 700-600'
15 sack plug 45-0'
10 sack plug in rat hole and mouse hole.

Surface pipe cut off below plow depth and plate welded over top.

STATE CORPORATION COMMISSION
WICHITA, KANSAS
DEC 4 1967

(If additional description is necessary, use BACK of this sheet)

Name of Plugging Contractor Sun Oilwell Cementing, Inc.

Address P. O. Box 169 - Great Bend, Kansas

STATE OF TEXAS, COUNTY OF DALLAS, ss.

John C. Roberts (employee of owner) of the above-described well, being first duly sworn on oath, says: That I have knowledge of the facts, statements, and matters herein contained and the log of the above-described well as filed and that the same are true and correct. So help me God.

(Signature) John C. Roberts

2000 Fidelity Union Tower - Dallas, Texas (Address)

SUBSCRIBED AND SWORN to before me this 30th day of November, 19 67

Bonita Pierson Notary Public.

My commission expires June 1, 1969

SCHLUMBERGER

DUAL INDUCTION - LATEROLOG

COUNTY MEADE
 FIELD or LOCATION SEC. 20-34S-30W
 WELL RAYMOND ADAMS NO. 1
 COMPANY W. C. PICKENS
 COMPANY W. C. PICKENS
 WELL RAYMOND ADAMS NO. 1
 FIELD WILDCAT
 COUNTY MEADE STATE KANSAS
 LOCATION C NW NE
 Sec. 20 Twp. 34S Rge. 30W
 Other Services: FDC-GR
 Permanent Datum: GL Elev. 2686
 Log Measured From KB 12 Ft. Above Perm. Datum Elev.: K.B. 2698
 Drilling Measured From KB G.L. 2686

Date 11-22-67
 Run No. ONE
 Depth—Driller 6602
 Depth—Logger 6605
 Btm. Log Interval 6601
 Top Log Interval 1497
 Casing—Driller 8 5/8 @ 1497
 Casing—Logger 1497
 Bit Size 7 7/8
 Type Fluid in Hole SALT GEL
 Dens. 9.2 Visc. 43
 PH 6.8 Fluid Loss 10.8ml
 Source of Sample CIRCULATED
 R_m @ Meas. Temp. .50 @ 84 °F
 R_{mf} @ Meas. Temp. .36 @ 67 °F
 R_{mc} @ Meas. Temp. -- @ -- °F
 Sources: R_{mf} R_{mc} FP --
 R_m @ BHT .33 @ 126 °F
 Time Since Circ. 3 HRS.
 Max. Rec. Temp. 126 °F

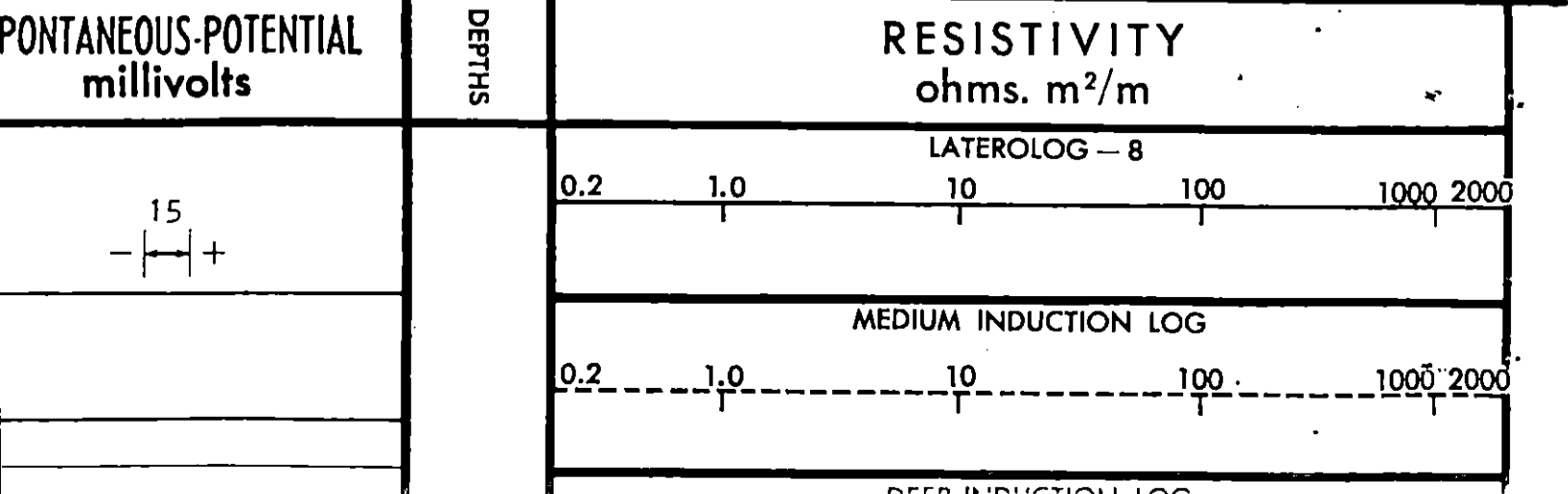
The well name, location and borehole reference data were furnished by the customer.

S. O. NO. 94309

in Mud Type or Additional Samples		Type Log	Depth	Scale Changes	
Sample No.				Scale Up Hole	Scale Down Hole
Driller					
Fluid in Hole					
Visc.					
Fluid Loss	ml				
Temp. of Sample					
R _{mf} @ Meas. Temp.	@ °F	@ °F	Run No.	Tool Type	Tool Position
R _{mc} @ Meas. Temp.	@ °F	@ °F			Other
R _m @ Meas. Temp.	@ °F	@ °F			
R _{mf} @ BHT	@ °F	@ °F			
R _{mc} @ BHT	@ °F	@ °F			
R _m @ BHT	@ °F	@ °F			

USED S.O. 1 1/2" RO DATA
 Used Cart. No. DIC-A-35 PG= 2.71 2600-TD
 Panel No. DIP-A-34 RW= .04 2600-6000
 Sonde No. DIS-A-21 RW= .035 6000-TD
 IAP No. MMP-A-34
 SBR = 2

Check one, filling in blanks where applicable:
 Surface determined sonde errors used for ILM and ILD.
 ILM and ILD sonde errors corrected for 7 7/8 inch borehole signal at R_m = .33
 ILM and ILD zeros set in hole at depth of _____ feet.



MEDIUM INDUCTION LOG

0.2 1.0 10 100 1000 2000

DEEP INDUCTION LOG

0.2 1.0 10 100 1000 2000

1500

1600

1700

1800

1900

2000

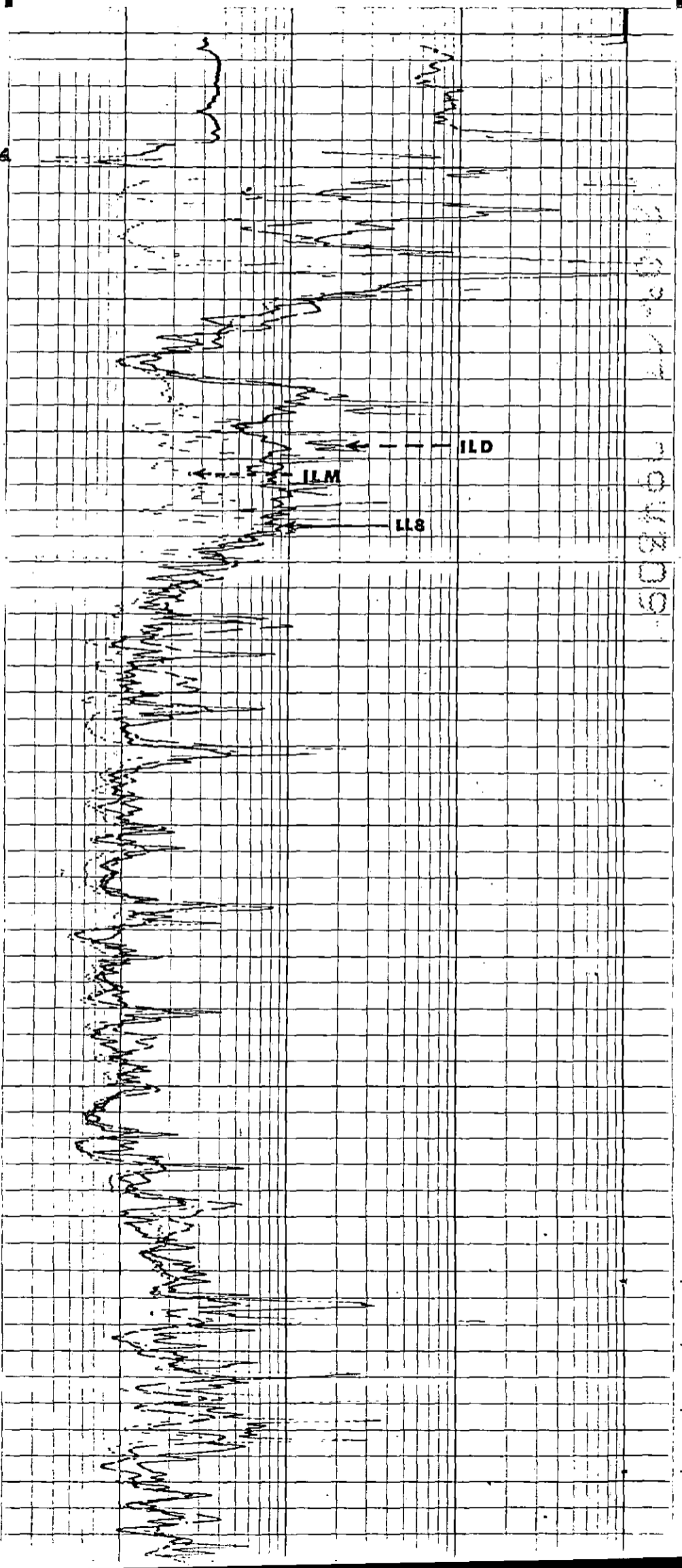
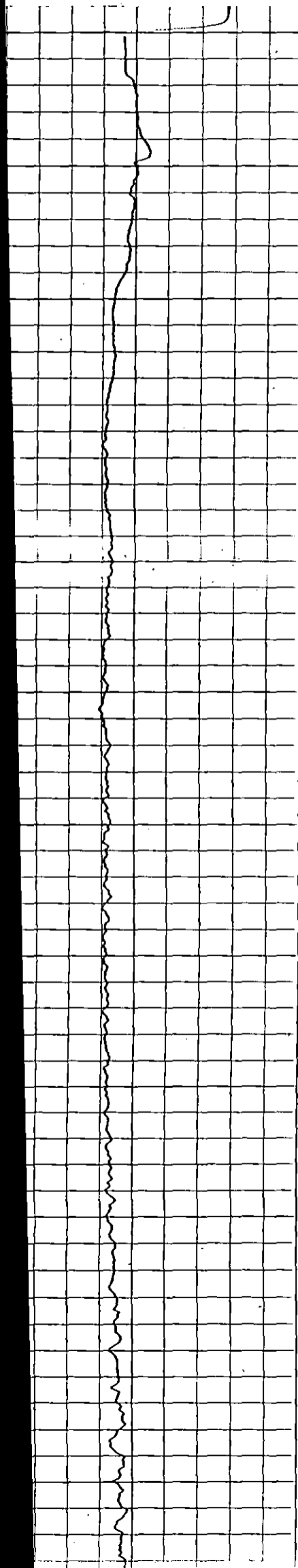
W

ILD

ILM

LLS

104209



00

COMPANY

W. C. PICKENS

RAYMOND ADAMS NO. 1

FIELD

WILDCAT

COUNTY

MEADE

PLOT NO.	DEPTH	LT OR P _s	LOG DATA		FORMATION OR RESERVOIR DATA		
			RESISTIVITY (R _t)	RESISTIVITY (R _{so})	POROSITY (%)	WATER SATURATION (S _w)	REMARKS
	3198-3204	R _w = .045			20	60	
	3247-50				11	65	
	3314-18		12		7	90	
	3318-22		6.5		14	55	SW/SXO = .74
	4718-20		15		11	49	
	5142-46		9.6		13	50	= .84
	5149-53		9.6		11	60	= .80
	5159-62		4.5		15	60	= .85
	5414-21		6.8		12	65	= 1.0
	5923-28	.035	1.8		20	61	
	5949-54	.035	16		6-7	60	
	5966-70		18		6	72	
	5970-74		12		10	50	
	5977-80		18		6	72	
	6196-6200		90		5	40	
	6200-08		30		10	32	
	6208-12		40		6	50	
	6390-6420				6-11	70-100	
	6536-42				9	100	
	6547-50				5	65	

"This interpretation represents our best judgment. Nevertheless, since all interpretations are opinions based solely on inferences from electrical or other measurements, we cannot and do not guarantee the accuracy or correctness of any interpretation and shall not, except in the case of willful negligence on our part, be liable or responsible for any loss, damages, or expenses that may be incurred or sustained resulting from this or any other interpretations."

DATE

11-22-67

SCHLUMBERGER LOCATION

LIBERAL

ENGINEER

STREETER & VOHS

SWSC-1229-A

00

1400

5000

Calibration before Survey

CALIBRATION DATA

COMPANY W. C. PICKENS

WELL RAYMOND ADAMS NO. 1

FIELD WILDCAT

COUNTY MEADE STATE KANSAS

SCHL. FR 6601

SCHL. TD 6605

DRLR TD 6602

Elev: KB 2698

DF 2696

GL 2686

