

H

STATE OF KANSAS  
STATE CORPORATION COMMISSION

WELL PLUGGING RECORD

FORMATION PLUGGING RECORD

Give All Information Completely  
Make Required Affidavit  
Mail or Deliver Report to:  
Conservation Division  
State Corporation Commission  
800 Bittling Building  
Wichita, Kansas

OR

Strike out upper line  
when reporting plug-  
ging of formations.

Clark County Sec 2 Twp 35S Rge (E) 21 (W)

Location as "NE 1/4 NW 1/4 SW 1/4" or footage from lines G NE SW

Lease Owner The Pure Oil Company

Lease Name C. H. Tuttle "G"

Office Address Box 9545 - Oklahoma City 18, Oklahoma

Character of Well (completed as Oil, Gas or Dry Hole) Dry Hole

Date well completed 7-19-59 19

Application for plugging filed 2-3-61 19

Application for plugging approved 2-8-61 19

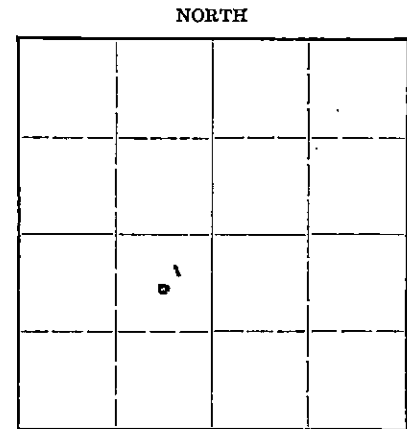
Plugging commenced 3-6-61 19

Plugging completed 3-16-61 19

Reason for abandonment of well or producing formation Dry Hole

If a producing well is abandoned, date of last production 19

Was permission obtained from the Conservation Division or its agents before plugging was commenced? Yes



Locate well correctly on above  
Section Flat

Name of Conservation Agent who supervised plugging of this well W. L. Lackamp, Jr.

Producing formation Dry Hole Depth to top Bottom Total Depth of Well Feet

Show depth and thickness of all water, oil and gas formations.

OIL, GAS OR WATER RECORDS

CASING RECORD

Formation	Content	From	To	Size	Put In	Pulled Out
				13-3/8"	532'	-
				5 1/2"	5702'	3211'

Describe in detail the manner in which the well was plugged, indicating where the mud fluid was placed and the method or methods used in introducing it into the hold. If cement or other plugs were used, state the character of same and depth placed, from feet to feet for each plug set.

Mudded hole 5633-5570; dumped 10' crushed rock 5570-5560 and 5 sacks cement 5560-5525. Shot 5 1/2" casing at 4010, 3811, 3688 & 3329 - no results. Shot off 5 1/2" casing at 3200 and pulled 99 fts (3211'). Mudded hole 5525-550; dumped 10' crushed rock 550-540; 30 sacks cement 540-510; mudded 510-30; 10' crushed rock 30-20 and 20 sacks cement 20' to bottom of cellar. Screwed steel cap on 13-3/8" casing and filled cellar with soil.

3-20-61

(If additional description is necessary, use BACK of this sheet)

Correspondence regarding this well should be addressed to J. E. Seigler  
Address Box 9545 - Oklahoma City 18, Oklahoma

STATE OF Oklahoma COUNTY OF Oklahoma, ss.

J. E. Seigler (employee of owner) or (owner or operator) of the above-described well, being first duly sworn on oath, says: That I have knowledge of the facts, statements, and matters herein contained and the log of the above-described well as filed and that the same are true and correct. So help me God.

(Signature) J. E. Seigler  
Box 9545 - Oklahoma City 18, Oklahoma (Address)

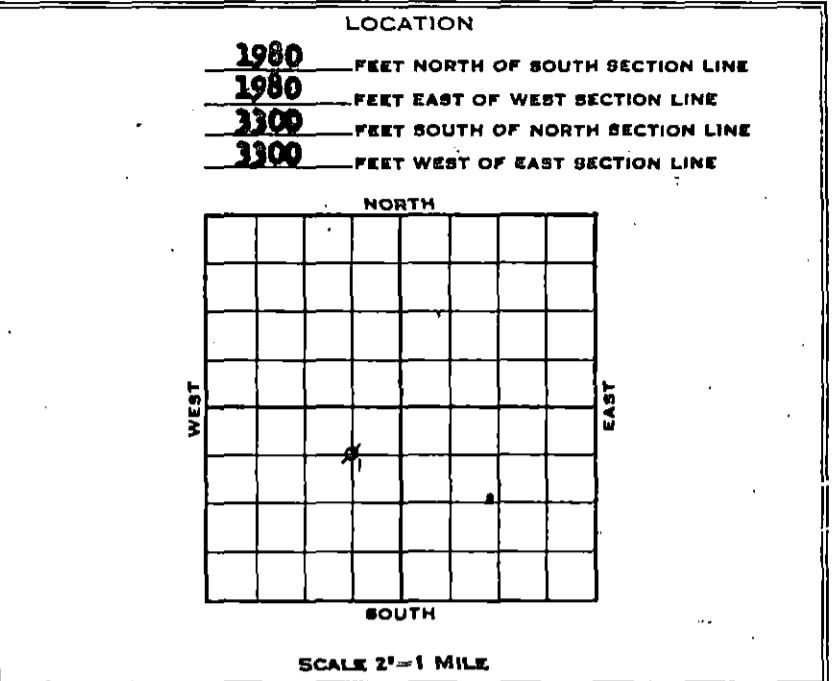
SUBSCRIBED AND SWORN to before me this 17 day of March 1961

My commission expires 4-14-64 Notary Public.

WELL LOG AND RELATED DATA

DIVISION **S. W. Producing** DISTRICT **Buffalo (Kansas)** LEASE **Tuttle, C. H. "E"**  
 ACRES **640 (Pt. 14, 645, 08) Pt. 11847** AFE No. **2641** ELEVATION **Ord. 1845'; D.F. 1853'** WELL No. **1**  
 TWP. **35S** RGE. **21W** PRCT.-DIST.-TWP. **(Chester Prospect)**  
 SURVEY **Clark** COUNTY **Clark** STATE **Kansas**

LOG			
FROM	TO	TOTAL	FORMATION
0	35	35	Surface soil & Sand
35	470	435	Red Beds
470	561	91	Red Beds, Gyp & Shells
561	780	219	Shale & Shells w/salt
780	1155	375	Shale & Lime Shells w/salt
1155	1525	370	Red Beds, Shale & Shells
1525	1575	50	Shale & Shells
1575	1687	112	Shale & Anhydrite
1687	2475	788	Lime & Shale
2475	2560	85	Lime
2560	3739	1179	Shale & Lime
3739	3764	25	Lime
3764	4195	431	Lime & Shale
4195	4262	67	Shale
4262	<b>ELGIN (E.L.Top)</b>		
4262	4280	18	Shale & Sand
4280	4353	73	Lime & Shale, sandy
4353	<b>HREBNER (E.L.Top)</b>		
4353	4500	147	Lime & Shale
4500	4574	74	Shale, gray
4574	<b>LANSING-KANSAS CITY (E.L.Top)</b>		
4574	4680	106	Lime, white, crystalline, porous locally
4680	4727	47	Lime & Shale
4727	4850	123	Lime, gray
4850	4950	100	Lime, gray, crystalline to dense
4950	5234	284	Lime, gray
5234	<b>MARMATON (E.L.Top)</b>		
5234	5342	108	Lime, gray
5342	5379	37	Lime, cherty, w/Shale, gray & green
5379	5406	27	Lime & Shale
5406	<b>CHEROKEE (E.L.Top)</b>		
5406	5450	44	Lime & Shale
5450	5536	86	Shale, gray & Lime, dense to crystalline
5536	<b>MORROW FORMATION (E.L.Top)</b>		
5536	5552	16	Shale, green, w/Lime streaks
5552	5572	20	Lime & Shale (See Core Record starting at 5552')
5572	<b>MORROW "A" ZONE (E.L.Top)</b>		
5572	5600	28	Shale & Sand
5600	<b>MORROW "B" ZONE (E.L.Top)</b>		
5600	5633	33	Sand & Shale
5633	5636	3	Shale, greenish gray
5636	<b>MORROW "C" ZONE (E.L.Top)</b>		
5636	5656	20	Sand, med. to coarse grained, free oil in samples
5656	5660	4	Shale, greenish-gray
5660	<b>MISS. (E.L.Top)</b>		
5660	5670	10	Lime, tan, fossiliferous, crystalline
5670	<b>TOTAL DEPTH</b>		



CASING AND CEMENTING RECORD

SIZE CASING	5-1/2"	5-1/2"
THREAD	8 Rd.	8 Rd.
WEIGHT	48#	11.5#
GRADE	H-40	J-55
CONDITION	C/A	C/A
SET AT	541'	5666'
BACKS CEMENT	500	300
SIZE OF HOLE	17-1/4"	7-7/8"

(Temp. survey indicated top cement behind 5-1/2" cas. at 4285')

LINER RECORD

SIZE	WT.	COND.	LENGTH	BLANK	PERF.	SET AT

GUN PERFORATING RECORD

DATE	CASING	FROM	TO	SIZE SHOTS	NO. SHOTS
7-23-59	5-1/2"	5600	5608	Jet	32

SHOT OR ACID RECORD

DATE	TOP	BOTTOM	SHOT-ACID	REMARKS
7-25-59	5600	5608	250	Mud Acid
7-26-59	5600	5608		Water-Fract 18,000 G. 3% Acid Water, 21,000# Sand

DRILLING: COMMENCED **6-22-59** COMPLETED **7-19-59**  
 ELECTRICAL SURVEY **Schlumberger (Lansing & Co.)** DATE **7-19-59(1)**  
 DRILLED WITH **(Patton Drilling Co., Inc.) Rotary** TOOLS  
 DRILLED IN WITH **(Patton Drilling Co., Inc.) Rotary** TOOLS  
 FIRST PROD. - NAT. DATE **Dry Hole** HRS. \_\_\_\_\_ BBLs. \_\_\_\_\_ OIL  
 WATER \_\_\_\_\_ M CU. FT. GAS \_\_\_\_\_ LBS. ROCK PRESS.  
 FIRST PROD. AFTER ACID - DATE **Dry Hole** HRS. \_\_\_\_\_ BBLs. \_\_\_\_\_ OIL  
 WATER \_\_\_\_\_ M CU. FT. GAS \_\_\_\_\_ LBS. ROCK PRESS.  
 GAS/OIL RATIO \_\_\_\_\_ POTENTIAL **Dry Hole** BBLs. \_\_\_\_\_  
 GRAVITY \_\_\_\_\_ TEMP. \_\_\_\_\_ GRADE \_\_\_\_\_

(1) Lane-Wells (Correlation Log) 7/23/59.

DATE ABANDONED - SOLD \_\_\_\_\_

FROM	TO	TOTAL	FORMATION
			<b>PLUGGED BACK</b>
5670	5633	37	Cement in 5 1/2" casing
5633			TOTAL DEPTH-PB
(All measurements taken from top of rotary bushing which is 3' above derrick floor.)			

FROM	TO	TOTAL	FORMATION
<b>ADDITIONAL WELL DATA:</b>			
<b>ANGULAR DEVIATIONS (Eastman)</b>			
	Degrees		Degrees
<u>Depth</u>	<u>Off Vertical</u>	<u>Depth</u>	<u>Off Vertical</u>
136	1	2500	1/2
192	1/4	2850	1/4
300	1/4	3250	1/8
435	1/4	3500	1/4
750	1/2	3800	1/4
1030	0	4050	1-1/8
1280	1/2	4190	1-1/2
1500	3/4	4350	3/4
1750	3/4	4500	1/2
2025	3/4	4950	Miss run
2250	3/4	5050	1/8
<b>CORE RECORD:</b>			
<u>Core No.</u>	<u>Depth</u>	<u>Rec.</u>	<u>Description</u>
1	5552-5580	24'	2' Lime, brown crystalline with thin shale breaks @ 3' Shale, gray scattered lime inclusions - 1' Lime, brown crystalline - 2' Shale green-gray - 4' Lime brown - 3' Shale greenish - 2' Lime, tan crystalline - 2' Shale greenish - 5' Sand, fine grained argillaceous, tight greenish scattered vertical fractures, scattered pinpoint fluorescence.
2	5580-5633	53'	2' Shale, green, rotten - 2' Sand, greenish, fine grained, tight w/limestone inclusions - 10' Sand, greenish, fine grained, tight, w/abundant shale laminations - No visible show - 7' Shale, dark gray, w/thin greenish sand laminations - 4' Sand, greenish, fine, tight, w/shale laminations - 1' Sand, greenish, fine, tight, w/scattered staining & fluorescence, w/slight bleeding oil & gas - 4' 6" Sand, greenish, bleeding oil & gas, tight, w/staining & fluorescence, & scattered shale flakes - 1' 6" Shale, dark gray, dense, slightly calcareous - 21' Shale, dark gray, slightly calcareous & dense.
<b>DRILL STEM TESTS:</b>			
7/19/59	5591-5633	(Morrow)	(Double packers) Tool open 1 hr. - Slight air blow at surface immediately & continued throughout test - Recovered 175' gas-out mud w/occasional trace oil - 30 minute Initial SI BHP 1015# - IFP & FFP 85# - 30 minute Final SI BHP 155#.
7/20/59	5608-5670	(Morrow)	Tool open 1 hr. - Good air blow at surface immediately, remained good throughout test - Recovered 186' mud & 270' muddy salt water - 30 minute Initial SI BHP 2132# - IFP 1112# FFP 2103# - 30 minute Final SI BHP 2118#.
<b>P.B. &amp; PERFORATE 7/21/59 - 7/23/59</b>			
Set 5-1/2" casing at 5666 with 300 ex. Foamix - Top cement inside casing at 5633, now plugged back total depth - Lane-Wells ran correlation log, then perforated 5-1/2" casing in Morrow 5600-5608 with 32 jet shots, 4 shots/ft.			

FROM	TO	TOTAL	FORMATION	FROM	TO	TOTAL	FORMATION
<b>ADDITIONAL WELL DATA: (Continued)</b>							
<b>ACID &amp; WATER-FRAC: 7/25/59</b>							
<p>Dowell attempted to treat Morrow through perforations in 5-1/2" casing 5600-5608 as follows: Spotted 250 gals. acid on perforations and displaced acid into formation over a period of 3 hrs. CP 3000#, TP 3500#. Formation would not break down under 3500# pressure - Bled off pressure and pulled tubing - Reran tubing with Halliburton KTB packer and set at 5578 - Dowell broke down formation with 40 bbls. water at 5700# pressure decreasing to 3200# as water entered formation. Filled packer and reran tubing open-ended and set at 5592 - Dowell treated Morrow through perforations 5600-5608 with 18,000 gals. 3% acid water and 21,000# Sand - Maximum treating pressure 3350#, minimum 2000# - Flushed casing with 120 bbls. water ending flush at 3350#. Pressure after 1 minute 1500# after 10 minutes 1000# and after 2 hrs. were scrubbed on test with negative results.</p>							