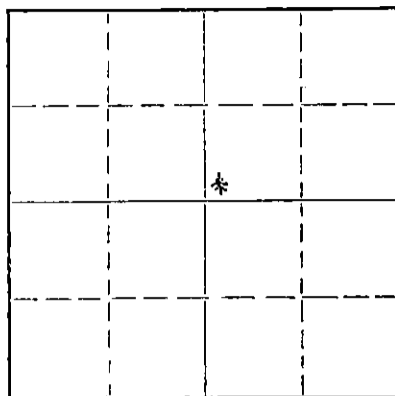


STATE OF KANSAS  
 STATE CORPORATION COMMISSION  
 Give All Information Completely  
 Make Required Affidavit  
 Mail or Deliver Report to:  
 Conservation Division  
 State Corporation Commission  
 212 No. Market  
 Wichita, Kansas

WELL PLUGGING RECORD

NORTH



Locate well correctly on above Section Plat

Stevens County, Sec. 28 Twp. 34S Rge. (E) 36 (W)  
 Location as "NE/CNW/SW" or footage from lines 2532' From E Line & 2481' From N Line  
 Lease Owner Mobil Oil Corporation  
 Lease Name Parker Estate # 3 Well No. 4  
 Office Address P. O. BOX 5444, Denver, CO 80217  
 Character of Well (completed as Oil, Gas or Dry Hole) Dry Hole  
 Date well completed March 22 19 79  
 Application for plugging filed March 29 19 79  
 Application for plugging approved 19  
 Plugging commenced March 22 19 79  
 Plugging completed March 22 19 79  
 Reason for abandonment of well or producing formation Dry Hole

If a producing well is abandoned, date of last production 19  
 Was permission obtained from the Conservation Division or its agents before plugging was commenced? Yes Clarence Thomas

Name of Conservation Agent who supervised plugging of this well  
 Producing formation Depth to top Bottom Total Depth of Well 6900 Feet  
 Show depth and thickness of all water, oil and gas formations.

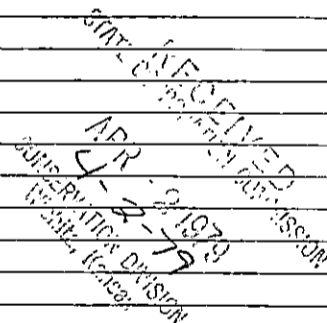
OIL, GAS OR WATER RECORDS

CASING RECORD

FORMATION	CONTENT	FROM	TO	SIZE	PUT IN	PULLED OUT
Glorietta	Sand	0	1750	8-5/8"	1750	5' casing cemented

Describe in detail the manner in which the well was plugged, indicating where the mud fluid was placed and the method or methods used in introducing it into the hole. If cement or other plugs were used, state the character of same and depth placed, from feet to feet for each plug set.

1 St plug 25 sacks Class H Cement 2920-3000'  
 2 Nd plug 50 " " " 2740-2800'  
 3 RD plug 35 " " " 1640-1750'  
 4th plug 10 " " " 0- 40'  
 5 sacks class H cement in mouse hole



(If additional description is necessary, use BACK of this sheet)

Name of Plugging Contractor Zenith Drilling Co., Inc.  
 Address 200 W. Douglas, Wichita, Kansas 67202

STATE OF Colorado, COUNTY OF Denver, ss.  
 C.J. PARK (employee of owner) or (owner or operator) of the above-described well, being first duly sworn on oath, says: That I have knowledge of the facts, statements, and matters herein contained and the log of the above-described well as filed and that the same are true and correct. So help me God.

(Signature) *C.J. Park*  
 P.O. BOX 5444, Denver, Colorado 80217  
 (Address)

SUBSCRIBED AND SWORN to before me this 30th day of March, 1979

My commission expires Sept. 28, 1979  
*Michelle Jajdelaki* Notary Public.

**IMPORTANT**  
 Kans. Geo. Survey request  
 samples on this well.

15-189-20442-0000

**KANSAS DRILLERS LOG**

S. 28 T. 34 R. 36 <sup>X</sup> W  
 Loc. SW SW SW NE  
 County Stevens

API No. 15 — 189 — 20,442  
County Number

Operator  
 Mobil Oil Corp.

Address  
 Box 5444 Denver, Colo 80217

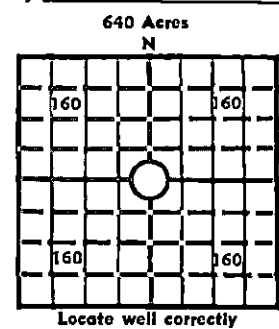
Well No. #4 Lease Name Parker Estate #3 Farm

Footage Location  
feet from (N) (S) line feet from (E) (W) line

Principal Contractor Zenith Drilling Geologist G. F. Chavez

Spud Date 3/2/79 Total Depth 6900 P.B.T.D. -

Date Completed 3/22/79 Oil Purchaser -



Elev.: Gr. 3067  
 DF \_\_\_\_\_ KB \_\_\_\_\_

**CASING RECORD**

Report of all strings set—surface, intermediate, production, etc.

Purpose of string	Size hole drilled	Size casing set (in O.D.)	Weight lbs/ft.	Setting depth	Type cement	Sacks	Type and percent additives
Surface Casing	12-1/4"	8-5/8"	24#	1750	Class H Reg Howco Lite	150 600	3% CACL2 1/4# Sx. Flocele + 2% CACL2

**LINER RECORD**

**PERFORATION RECORD**

Top, ft.	Bottom, ft.	Sacks cement	Shots per ft.	Size & type	Depth interval

**TUBING RECORD**

Size	Setting depth	Packer set at

**ACID, FRACTURE, SHOT, CEMENT SQUEEZE RECORD**

Amount and kind of material used	Depth interval treated
WELL PLUGGED AND ABANDONED	
25 sax @ 2920' 35 sax @ 1640'	
50 sax @ 2740' 10 sax @ 0-40'	

**INITIAL PRODUCTION**

Date of first production \_\_\_\_\_ Producing method (flowing, pumping, gas lift, etc.)  
 DRY HOLE

RATE OF PRODUCTION PER 24 HOURS	Oil	Gas	Water	Gas-oil ratio
	bbls.	bbls.	MCF	bbls.

Disposition of gas (vented, used on lease or sold) \_\_\_\_\_ Producing interval (s) \_\_\_\_\_

STATE DEPARTMENT OF REVENUE  
 CONSERVATION DIVISION  
 WICHITA, KANSAS  
 APR - 2 1979

**INSTRUCTIONS:** As provided in KCC Rule 82-2-125, within 90 days after completion of a well, one completed copy of this Drillers Log shall be transmitted to the State Geological Survey of Kansas, 4150 Monroe Street, Wichita, Kansas 67209. Copies of this form are available from the Conservation Division, State Corporation Commission, 3830 So. Meridian (P.O. Box 17027), Wichita, Kansas 66217. Phone AC 316-522-2206. If confidential custody is desired, please note Rule 82-2-125. Drillers Logs will be on open file in the Oil and Gas Division, State Geological Survey of Kansas, Lawrence, Kansas 66044.

Operator Mobil Oil Corporation DESIGNATE TYPE OF COMP.: OIL, GAS, DRY HOLE, SWDW, ETC.:

Well No. 4 Lease Name Parker Estate 3 Farm DRY HOLE

S 28 T 34 R 36 E W

**WELL LOG**  
 Show all important zones of porosity and contents thereof; cored intervals, and all drill-stem tests, including depth interval tested, cushion used, time tool open, flowing and shut-in pressures, and recoveries. SHOW GEOLOGICAL MARKERS, LOGS RUN, OR OTHER DESCRIPTIVE INFORMATION.

FORMATION DESCRIPTION, CONTENTS, ETC.	TOP	BOTTOM	NAME	DEPTH
Anhydrite + Shale	1750'	2600'	Chase	2686'
Dolomite + Shale	2600'	3100'	Winfield	2768'
Limestone + Shale	3100'	5920'	Council Grove	3013'
Shale + Limestone	5920'	6220'	Admire	3280'
Sandstone + Shale	6220'	6264'	Penn	3410'
Limestone + Shale	6264'	6900'	Lansing	4344'
TD		6900'	Marmaton	5140'
			Cherokee	5405'
			Morrow Sh.	5907'
			Morrow S.S.	6220'
			Chester	6264'
			St. Gen.	6504'
			St. Louis	6604'

USE ADDITIONAL SHEETS, IF NECESSARY, TO COMPLETE WELL RECORD.

Date Received \_\_\_\_\_  
 Signature: C. J. Park  
 Title: Producing Accounting Supervisor  
 Date: March 29, 1979