

STATE OF KANSAS - CORPORATION COMMISSION  
 PRODUCTION TEST & GOR REPORT

Form C-5 Revised

Conservation Division

TYPE TEST: Initial XX Annual Workover Reclassification TEST DATE: 5-16-92

Company Charter Productions Lease Good 15-175-21206-500 Well No. A-1

County Seward Location Location Section 20 Township 34S Range 31W Acres

Field Wildcat Reservoir Drum Pipeline Connection None

Completion Date 11-13-91 Type Completion(Describe) Plug Back T.D. 5906 Packer Set At

Production Method: Flowing PumpingXX Gas Lift Type Fluid Production Oil API Gravity of Liquid/Oil 41.8 @ 82 = 40.1 = .825

Casing Size 5 1/2 Weight 15.5 I.D. 4.950 Set At 5950 Perforations 4854 - 4864 To

Tubing Size 2 7/8 Weight 6.5 I.D. 2.441 Set At 4896 Perforations To

Pretest: Starting Date 5-13-92 Time 12:00 p.m. Ending Date 5-14-92 Time 12:00 p.m. Duration Hrs. 24

Test: Starting Date 5-14-92 Time 12:00 p.m. Ending Date 5-16-92 Time 12:00 p.m. Duration Hrs. 48

OIL PRODUCTION OBSERVED DATA

Producing Wellhead Pressure Casing: 39# Tubing: Pump Separator Pressure 25# Choke Size 23/64

Bbls./In.	Tank		Starting Gauge			Ending Gauge			Net Prod. Bbls.	
	Size	Number	Feet	Inches	Barrels	Feet	Inches	Barrels	Water	Oil
Pretest:	12X15	197029	2	1	41.75	8	3	165.33	26.72	123.58
Test:	12X15	196029	8	3	165.33	14	4	287.24	28.39	121.91
Test:	12X15	196028	1	11	38.41	8	1	161.99	41.75	123.58

GAS PRODUCTION OBSERVED DATA

Orifice Meter Connections Orifice Meter Range Pipe Taps: Flange Taps: Differential: 5 rts. Static Pressure: 25#

Measuring Device	Run-Prover-Tester Size	Orifice Size	Meter-Prover-Tester Pressure		Diff. Press. (hw) or (hd)	Gravity Gas (Gg)	Flowing Temp. (t)
			In.Water	In.Merc. Psig or (Pd)			
Orifice Meter							
Critical Flow Prover							
Orifice Well Tester	2"	0.250		25.0		.991	60

GAS FLOW RATE CALCULATIONS (R)

Coeff. (Fb)(Fp)(OWTC)	Meter-Prover Press. (Psia) (Pm)	Extension $\sqrt{hw \times Pm}$	Gravity Factor (Fg)	Flowing Temp. Factor (Ft)	Deviation Factor (Fpv)	Chart Factor (Fd)
54.7	25.0		.812	1.000		

Gas Prod. MCFD Flow Rate (R): 44 Oil Prod. Bbls./Day: 123.58 Gas/Oil Ratio (GOR) = 356 Cubic Ft. per Bbl.

The undersigned authority, on behalf of the Company, states that he is duly authorized to make the above report and that he has knowledge of the facts stated therein, and that said report is true and correct. Executed this the 22nd day of May 1992

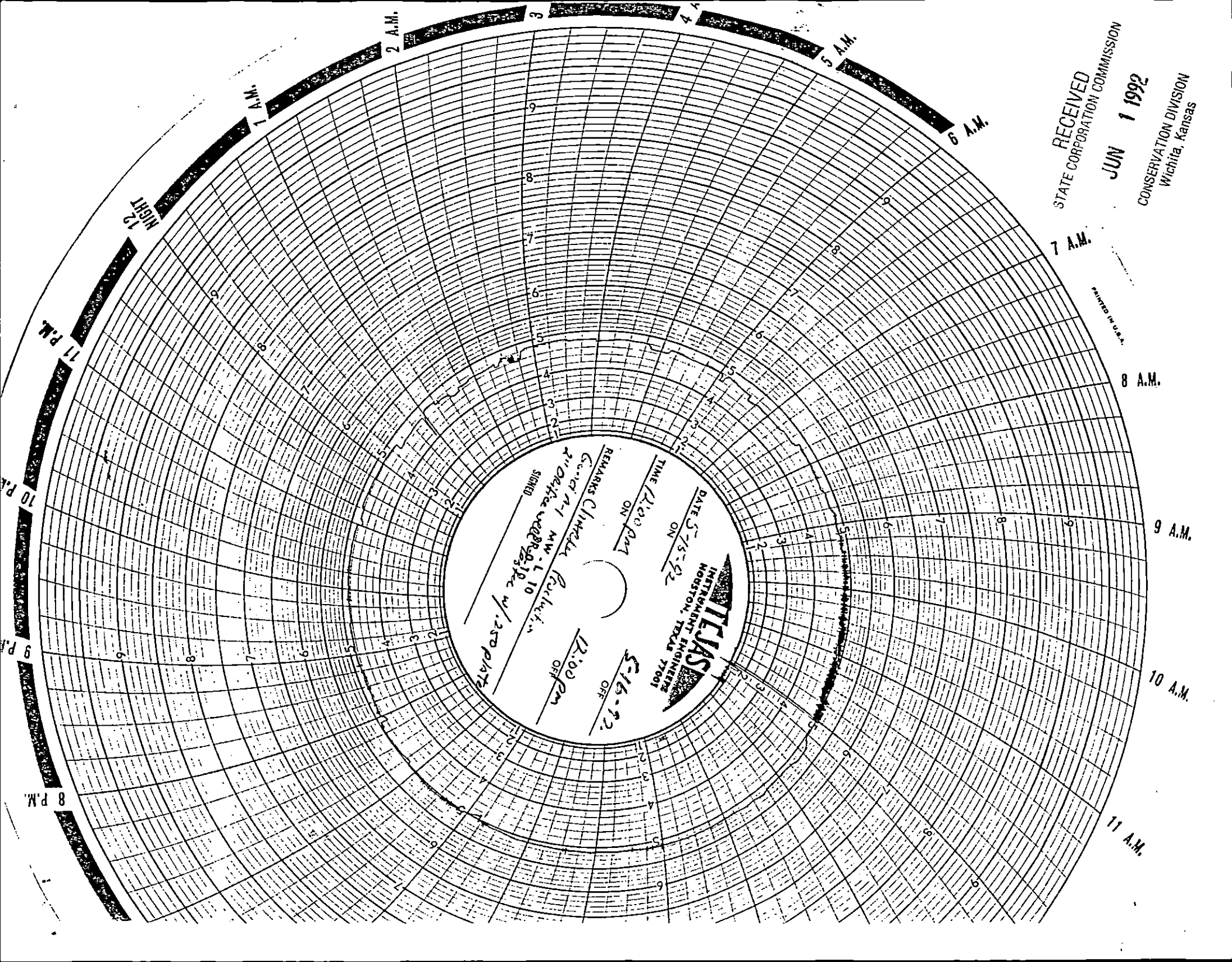
*James R. [Signature]*  
 For State

*Paul [Signature]*  
 HOSCO Operating, Inc.  
 For Company

For Offset Operator

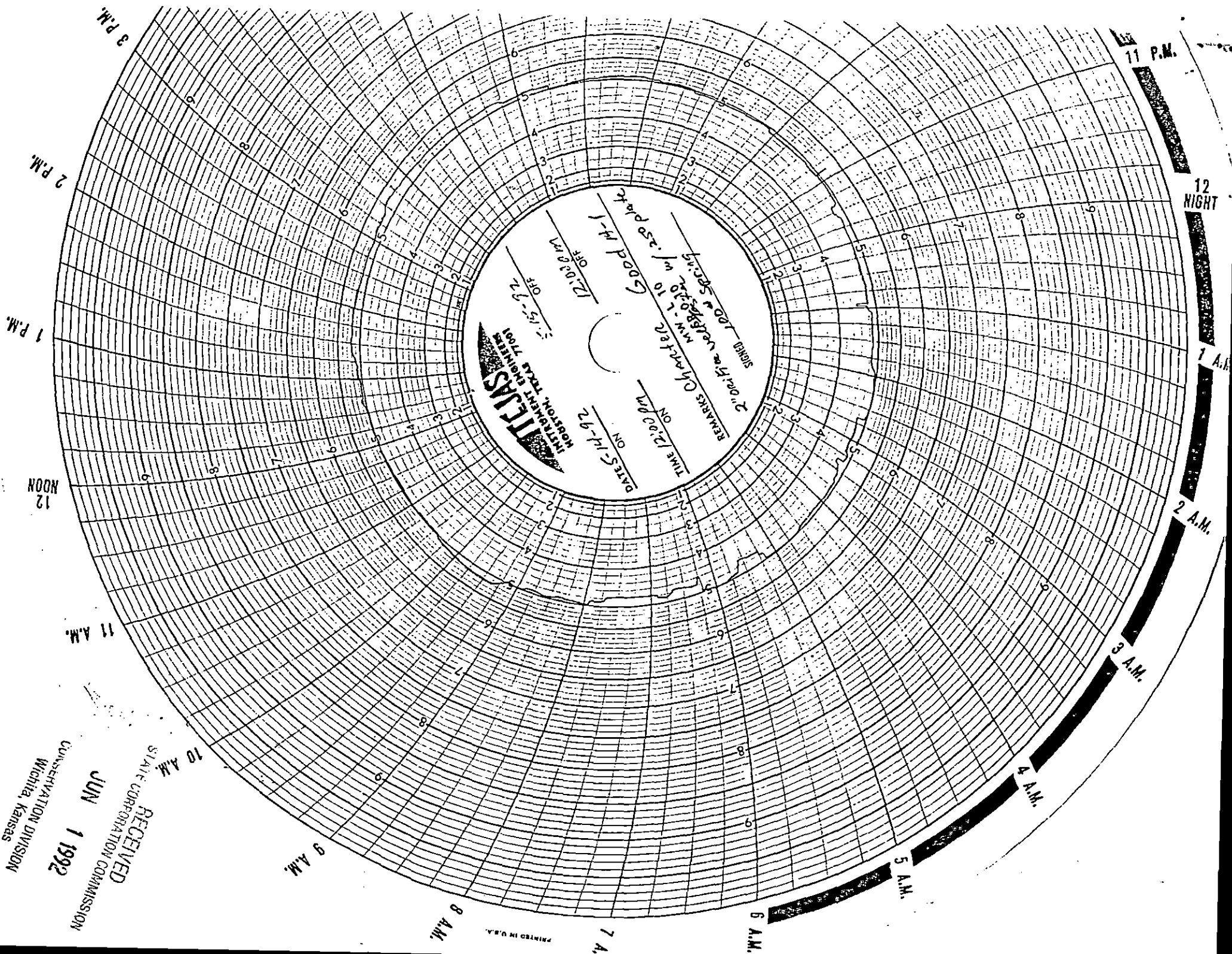
1992  
 CONSERVATION DIVISION  
 Wichita, Kansas

06-01-92

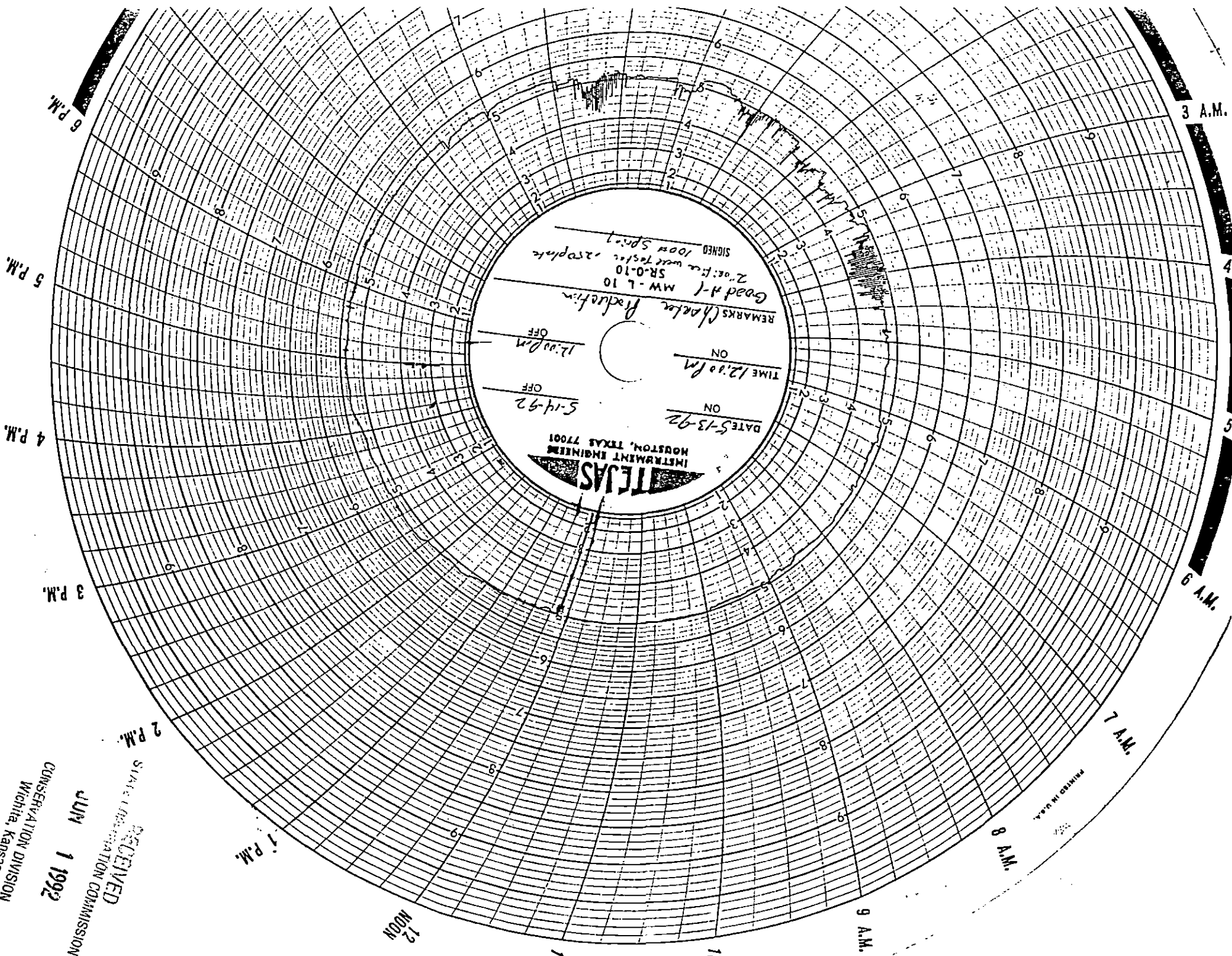


RECEIVED  
 STATE CORPORATION COMMISSION  
 JUN 1 1992  
 CONSERVATION DIVISION  
 Wichita, Kansas

MADE IN U.S.A.



RECEIVED  
 STATE CORPORATION COMMISSION  
 JUN 1 1992  
 CONSERVATION DIVISION  
 Wichita, Kansas



**TEXAS**  
 INSTRUMENT ENGINEERS  
 HOUSTON, TEXAS 77001

DATES 5-13-92  
 ON  
 TIME 12:00 PM  
 ON  
 5-14-92  
 OFF

REMARKS (Notes) Production  
 Good #1 MW-L 10  
 SR-0-10  
 2" of P. wave Test. 220 plate  
 SIGNED 100% Sp. 1

RECEIVED  
 STATE INFORMATION COMMISSION  
 CONSERVATION DIVISION  
 WICHITA, KANSAS  
 JUN 1 1992

PRINTED IN U.S.A.

XX

Sample Number: 92-151

HOSCO OPERATING, INC.  
NATURAL GAS ANALYSIS REPORT  
316-624-5636

Operator: Charter Production Co.      Analysis Date: 05-21-92  
Well Name: Good A-1                      Sample Date: 05-20-92  
Location: sec    -twp    -rge              Sample Pressure: 6 psig  
County: Seward                              Sample Temperature:  
State: Kansas

Sample Source: D/S of separator  
Formation:

Requested By: Charter Production Co.  
Sampled By: Les Moss

XX  
XX

NATURAL GAS ANALYSIS

NAME	MOLE %
HELIUM	0.04
HYDROGEN	0.00
OXYGEN	0.00
HEXANES +	1.12
NITROGEN	6.57
METHANE	52.19
CARBON DIOXIDE	0.06
ETHANE	13.74
PROPANE	17.27
ISOBUTANE	2.09
N-BUTANE	5.03
ISOPENTANE	1.00
N-PENTANE	0.89
TOTALS	100.00

Specific Gravity: 0.9914

BTU/cu.ft. (saturated, 60 F. 14.73 psia): 1555.6

GPM - 11.879

XX

RECEIVED  
STATE CORPORATION COMMISSION  
JUN 1 1992  
CONSERVATION DIVISION  
Wichita, Kansas

Sample Number: 92-148

HOSCO OPERATING, INC.  
NATURAL GAS ANALYSIS REPORT  
316-624-5636

Operator: Charter Production Co.      Analysis Date: 05-19-92  
Well Name: Good A-1A-1                  Sample Date: 05-16-92  
Location: sec 20-twp 34-rge 31      Sample Pressure: 25 psig  
County: Seward                          Sample Temperature: 70 F  
State: Kansas

Sample Source: D/S of separator  
Formation:

Requested By: Charter Production Co.  
Sampled By: Les Moss

XX  
XX

NATURAL GAS ANALYSIS

NAME	MOLE %
HELIUM	0.04
HYDROGEN	0.00
OXYGEN	0.00
HEXANES +	1.05
NITROGEN	6.39
METHANE	51.51
CARBON DIOXIDE	0.07
ETHANE	14.10
PROPANE	17.76
ISOBUTANE	2.13
N-BUTANE	5.08
ISOPENTANE	0.96
N-PENTANE	0.91
TOTALS	100.00

Specific Gravity: .9962

BTU/cu.ft. (saturated, 60 F. 14.73 psia): 1566.5

GPM - 12.102

RECEIVED  
STATE CORPORATION COMMISSION  
JUN 1 1992  
CONSERVATION DIVISION  
Wichita, Kansas

HOSCO Operating, Inc.  
P.O. Box 252  
Liberal, Kansas 67901  
316-624-5636 or  
316-624-6258 - Unit 190

Producer Charter Productions  
Well Name Good A-1  
Location 20-34S-31W  
State Kansas County Seward

Csg 5 1/2 Wt 15.5 Set @ 5950 TD \_\_\_\_\_ PB 5906  
Tbg 2 7/8 Wt 6.5 Set @ 4896 SN \_\_\_\_\_ Pkr \_\_\_\_\_  
Perfs. 4854 to 4864 to \_\_\_\_\_ to \_\_\_\_\_  
Prover \_\_\_\_\_ Meter \_\_\_\_\_ Taps \_\_\_\_\_ Orifice \_\_\_\_\_ Pcr \_\_\_\_\_ Tcr \_\_\_\_\_  
Gg .991 API 41.8 @ 82 GM .825 Reservoir \_\_\_\_\_ Drum \_\_\_\_\_

Date Time of Reading	Elap Time Hours	Wellhead Pressure Data						Measurement Data				Liquids		Type Test:	Initial Annual	Special Retest	Ending Date	
		Csg Psig	Δ P Csg	Tbg Psig	Δ P Tbg	BHP Psig	Δ P BHP	Press. Psig	Dif	Temp.	O mct/D	Cond bbls	Water bbls					
Wednesday		5-13-92																5-16-92
1145																		Arrived on location - Install equipment on separator = 2" orifice well tester with 0.250 plate
1200		39		Pumping				25				44						Begin test - Stock tank #196029 12 X 15 2'1" beginning gauge
Thursday		5-14-92																
1200	24	39		Pumping				25				44	123.58	26.72				Stock tank #196029 8'3"
Friday		5-15-92																
1200	48	39		Pumping				25				44	121.91	28.39				Stock tank # 196029 14'4" Switch to stock tank #196028 Beginning gauge - 1'11"
Saturday		5-16-92																
1145	71.75	39		Pumping				25				44						Gas sample taken @ orifice well tester
1200	72	39		Pumping				25				44	123.58	41.75				Stock tank # 196028 8'1"