

SIDE ONE

Two (2) copies of this form shall be filed with the Kansas Corporation Commission, 200 Colorado Derby Building, Wichita, Kansas 67202, within thirty (30) days after the completion of a well, regardless of how the well was completed.

Attach separate letter of request if the information is to be held confidential. If confidential, only file one copy. Information on Side One will be of public record and Side Two will then be held confidential.

Applications must be made on dual completion, commingling, salt water disposal, injection and temporarily abandoned wells.

Attach one copy only wireline logs (i.e. electrical log, sonic log, gamma ray neutron log, etc.). (Rules 82-2-105 & 82-2-125) KCC# (316) 263-3238.

LICENSE # 6878 EXPIRATION DATE 6/30/83
OPERATOR Northern Natural Gas Prod. Company for API NO. 15-189-20602-0000
ADDRESS P. O. Box 5444 Mobil Oil Corporation COUNTY Stevens
Denver, CO 80217 FIELD Panoma
** CONTACT PERSON C. J. Park, Prod. Acctg. Supv. PROD. FORMATION Council Grove
PHONE 303/572-2696

PURCHASER Northern Natural Gas Company LEASE Dudley #2 Unit
ADDRESS 2223 Dodge Street WELL NO. 3
Omaha, Nebraska 68102 WELL LOCATION SW NW SE
DRILLING Earl F. Wakefield, Inc. 1650 Ft. from South Line and
CONTRACTOR ADDRESS 300 West Douglas, Suite 500 2310 Ft. from East Line of
Wichita, Kansas 67202 the (Qtr.) SEC 12 TWP 32 S RGE 36 W.

PLUGGING -
CONTRACTOR ADDRESS

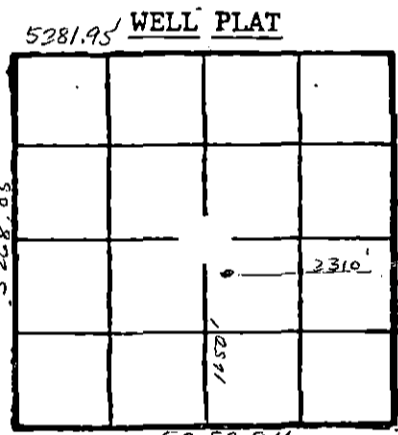
TOTAL DEPTH 3170' PBTD 3158'
SPUD DATE 9/28/82 DATE COMPLETED 10/26/82
ELEV: GR 3036' DF KB 3044'

DRILLED WITH (CABLE) (ROTARY) (AIR) TOOLS.
DOCKET NO. OF DISPOSAL OR REPRESSURING WELL BEING USED TO DISPOSE OF WATER FROM THIS LEASE CD-82408-C (C-13, 821)

Amount of surface pipe set and cemented 740' DV Tool Used? No

THIS AFFIDAVIT APPLIES TO: (Circle ONE) - Oil, Gas, Shut-in Gas, Dry, Disposal, Injection, Temporarily Abandoned, OWWO. Other

ALL REQUIREMENTS OF THE STATUTES, RULES AND REGULATIONS PROMULGATED TO REGULATE THE OIL AND GAS INDUSTRY HAVE BEEN FULLY COMPLIED WITH.



(Office Use Only)
KCC [checked]
KGS [checked]
SWD/REP
PLG.

A F F I D A V I T

C. J. Park, being of lawful age, hereby certifies that:

I am the Affiant, and I am familiar with the contents of the foregoing Affidavit. The statements and allegations contained therein are true and correct.

(Signature of C. J. Park)
(Name)

SUBSCRIBED AND SWORN TO BEFORE ME this 2nd day of December, 1982.

(Signature of Notary)
STATE OF KANSAS
(NOTARY PUBLIC)
DEC 12 1982
WICHITA DIVISION
Wichita, Kansas

MY COMMISSION EXPIRES: 11-28-84

** The person who can be reached by phone regarding any questions concerning this information.

OPERATOR Mobil Oil Corporation LEASE Dudley #2 Unit 3SEC.12 TWP.32S RGE.36W

FILL IN WELL LOG AS REQUIRED:

Show all important zones of porosity and contents thereof; cased intervals, and all drill-stem tests, including depth interval tested, cushion used, time tool open, flowing and shut-in pressures, and recoveries.

SHOW GEOLOGICAL MARKERS, LOGS RUN, OR OTHER DESCRIPTIVE INFORMATION.

FORMATION DESCRIPTION, CONTENTS, ETC.	TOP	BOTTOM	NAME	DEPTH
Surface Sand - Clay	0	610	Chase	2597
Red Bed	610	1080	Council Grove	2938
Shale	1080	1265		
Sand	1265	1460		
Shale	1460	1475		
Shale & Gyp (Anhydrite @ 1775')	1475	1995		
Shale	1995	2690		
Lime & Shale	2690	3170		
R.T.D.	3170			

Report of all strings set — surface, intermediate, production, etc. **CASING RECORD** (New) or (Used)

Purpose of string	Size hole drilled	Size casing set (in O.D.)	Weight lbs/ft.	Setting depth	Type cement	Sacks	Type and percent additives
Surface	12 1/4"	8 5/8"	24#	740'	Class H	165	12% gel + 3% CaCl ₂
					Class H	125	3% CaCl ₂
Production	7 7/8"	5 1/2"	14#	3170'	Class H	550	65/35 Poz + 6% gel + 1/4#
					Class H	125	cellophane; 8% salt + .2% D-46.

LINER RECORD

PERFORATION RECORD

Top, ft.	Bottom, ft.	Sacks cement	Shots per ft.	Size & type	Depth interval
			2 shots/ft.		2941-2943, 2945-2952, 2954-2956, 2971-2981, 2985-2991,
					3009-3011, 3014-3017

TUBING RECORD

Size	Setting depth	Packer set at
2 3/8"	3158'	

ACID, FRACTURE, SHOT, CEMENT SQUEEZE RECORD

Amount and kind of material used	Depth interval treated
Acidized down 5 1/2" csg. with 924 gal. L401 acid and additives with 99 ball sealers.	2941-3017'
Date of first production	Producing method (flowing, pumping, gas lift, etc.)
Awaiting pipeline connection	Gravity Awaiting pipeline connection
RATE OF PRODUCTION PER 24 HOURS	Gas all ratio
Oil	Gas
Water	Gas
Disposition of gas (vented, used on lease or sold)	Perforations
Awaiting pipeline connection	2941-3017