

15-119-10138-0000

STATE OF KANSAS  
STATE CORPORATION COMMISSION

WELL PLUGGING RECORD

Give All Information Completely  
Make Required Affidavit  
Mail or Deliver Report to:  
Conservation Division  
State Corporation Commission  
211 No. Broadway  
Wichita, Kansas

Meade County, Sec. 33 Twp. 32S Rge. 30 (E) W (W)

Location as "NE/CNW'SW" or footage from lines 660' from South & 1980' from East.

Lease Owner Phillips Petroleum Company

Lease Name Vail B Well No. 1

Office Address Box 241, Guymon, Oklahoma

Character of Well (completed as Oil, Gas or Dry Hole) Oil

Date well completed February 17, 1957

Application for plugging filed October 17, 1957

Application for plugging approved October 21, 1957

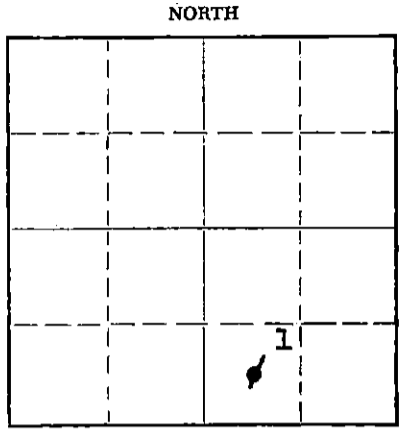
Plugging commenced October 24, 1957

Plugging completed October 25, 1957

Reason for abandonment of well or producing formation Insufficient production; unprofitable to operate.

If a producing well is abandoned, date of last production September 28, 1957

Was permission obtained from the Conservation Division or its agents before plugging was commenced? Yes



Locate well correctly on above Section Plat

Name of Conservation Agent who supervised plugging of this well M. A. Rives

Producing formation Mississippian Depth to top 5671 Bottom 5777 Total Depth of Well 5777 Feet

Show depth and thickness of all water, oil and gas formations. PBDT - 5724 feet.

OIL, GAS OR WATER RECORDS

CASING RECORD

FORMATION	CONTENT	FROM	TO	SIZE	PUT IN	PULLED OUT
Lansing - Kansas City	Salt Water	4973	4997	8 5/8"	1804'	None
Keyes Sand	Oil Stain	5592	5656	5 1/2"	5759'	3214'
Mississippian	Oil Show	5709	5714			
"	25% Water	5726	5732			
"	40% Water	5756	5773			

Describe in detail the manner in which the well was plugged, indicating where the mud fluid was placed and the method or methods used in introducing it into the hole. If cement or other plugs were used, state the character of same and depth placed, from \_\_\_\_\_ feet to \_\_\_\_\_ feet for each plug set.

Pumped in 50 sack cement plug 5200' to 5600'. Shot off 5 1/2" casing coil string at 3210'; pulled 79 joints 3214' overall measurement. Pumped in mud, 13#-40 vis. Silverton Clay, to 545'. Set Halliburton wood plug at 545' and filled with rock and 20 sacks cement to 490'. Pumped in mud, 13#-40 vis. Silverton Clay, to 31'. Set Halliburton wood plug at 31' and filled up to bottom of cellar with rock and 10 sacks cement. Cut off 8 5/8" surface casing 3' below ground level and welded on steel cap. Cement circulated to top outside of surface casing when casing set.

RECEIVED  
STATE CORPORATION COMMISSION

NOV 4 1957

CONSERVATION DIVISION  
Wichita, Kansas

(If additional description is necessary, use BACK of this sheet)

Name of Plugging Contractor Gibson Machine & Tool Company

Address Box 1111, Borger, Texas.

STATE OF Oklahoma, COUNTY OF Texas, ss.

F. R. Holtzapple (employee of owner) of the above-described well, being first duly sworn on oath, says: That I have knowledge of the facts, statements, and matters herein contained and the log of the above-described well as filed and that the same are true and correct. So help me God.

(Signature) F. R. Holtzapple  
Box 241, Guymon, Oklahoma (Address)

SUBSCRIBED AND SWORN TO before me this 1 day of November, 19 57

[Signature] Notary Public.

My commission expires September 10, 1960

PLUGGING  
FILE SEC 33 T. 32 R. 30 W  
BOOK PAGE 57 LINE 32

LOG OF WELL

Vail B #1

<u>FORMATION NAME</u>	<u>TOP</u>	<u>BASE</u>	<u>REMARKS</u>
Heebner	4374	4395	
Toronto	4395	4504	
Lansing-Kansas City	4504	4747	
Drum	4747	5063	
Base-Kansas City	5063	5091	
Marmaton	5091	5301	
Cherokee	5301	5592	
Keyes Sand	5592	5671	
Mississippian	5671	5777 TD. PBD 5724'.	

Perforations 5670 to 5714'.

PLUGGING  
 FILE NO. 33 132 R 30w  
 BOOK PAGE 54 L 32

STATE OF OKLAHOMA  
 COMMISSION

OCT 19 1917

CON. DIVISION  
 OKAS