

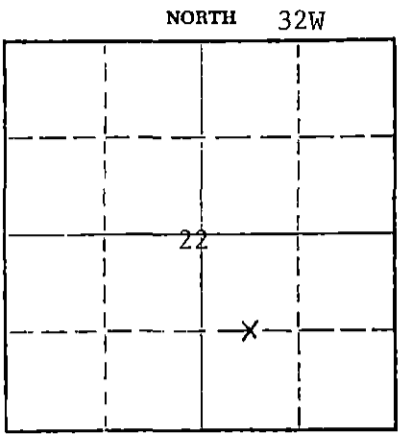
15-175-20354-0000

STATE OF KANSAS
STATE CORPORATION COMMISSION

Form CP-4

Give All Information Completely
Make Required Affidavit
Mail or Deliver Report to:
Conservation Division
State Corporation Commission
212 No. Market
Wichita, Kansas 67202

WELL PLUGGING RECORD



Locate well correctly on above Section Plat

Seward County, Sec 22 Twp. 32S Rge. 32 (W)
Location as "NE/CNWxSWx" or footage from lines 1320' FSL, 1980' FEL of SE/4
Lease Owner Cities Service Company
Lease Name Alexander J Well No. 1
Office Address 3545 N. W. 58th St., Oklahoma City, OK 73112
Character of Well (completed as Oil, Gas or Dry Hole) Dry Hole
Date well completed 10
32 Application for plugging filed 4-4 1978
S Application for plugging approved 4-4 1978
Plugging commenced 4-4 1978
Plugging completed 4-5 1978
Reason for abandonment of well or producing formation Dry Hole

If a producing well is abandoned, date of last production N/A 19
Was permission obtained from the Conservation Division or its agents before plugging was commenced? Yes

Name of Conservation Agent who supervised plugging of this well Clarence Thomas
Producing formation N/A Depth to top N/A Bottom N/A Total Depth of Well 4475 Feet
Show depth and thickness of all water, oil and gas formations.

OIL, GAS OR WATER RECORDS

CASING RECORD

FORMATION	CONTENT	FROM	TO	SIZE	PUT IN	PULLED OUT
N/A	-	-	-	8-5/8"	1689'	0

Describe in detail the manner in which the well was plugged, indicating where the mud fluid was placed and the method or methods used in introducing it into the hole. If cement or other plugs were used, state the character of same and depth placed, from feet to feet for each plug set.

4-4-1978: Ran OEDP & spotted the following cement plugs through DP:
65 sx 4400-4250' Lansing
70 sx 2800-2600' Hugoton
35 sx 1742-1642' Base Surface
10 sx 35-4' Top Hole
10 sx rat, &
10 sx mouse hole
Cut off the 8-5/8" casing 4' below surface to which point a steel cap with the well name and date was welded.

RECEIVED
STATE CORPORATION COMMISSION
APR 17 1978
CONSERVATION DIVISION
Wichita, Kansas

(If additional description is necessary, use BACK of this sheet)
Name of Plugging Contractor E. F. Wakefield Drilling, Inc.
Address 300 W. Douglas, Suite 500, Wichita, Kansas 67202

STATE OF OKLAHOMA, COUNTY OF OKLAHOMA, ss.
H. E. Massey (employee of owner) or (owner or operator) of the above-described well, being first duly sworn on oath, says: That I have knowledge of the facts, statements, and matters herein contained and the log of the above-described well as filed and that the same are true and correct. So help me God.

(Signature) H. E. Massey H. E. Massey
3545 N. W. 58th Street, Oklahoma City, OK 73112
(Address)

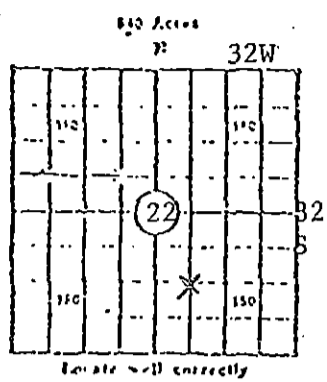
SUBSCRIBED AND SWORN to before me this 11th day of April, 1978

My commission expires 10-3-81
Diana S. Gary Notary Public.

KANSAS CORPORATION COMMISSION

WELL RECORD

(Mail to Kansas Geological Survey, 4150 Monroe Street, Wichita, Kansas 67209)



Lease Name: Alexander J Well No. 1
 Well Located: 1320' FSL, 1980' FEL of SE/4
S1C 22 TWP 32S R1E 32W
 Operator: Cities Service Company
 Address: 3545 N. W. 58th Street, Oklahoma City, OK 73112
 Elevation: Ground 2820' D.P. 2827' K.B. 2828'
 Type Well: (Oil, gas, dry hole) Dry Hole

Drilling Commenced: 3-24 1978 Drilling Completed: 4-4-1978
 Well ~~Completed~~ P&A 4-4 1978 Total Depth 4475'
 Initial Production: N/A

Casing Record

Size: 8-5/8" Set at 1689' Size: Set at
 Size: Set at Size: Set at

Liner Record

Size: Set from To

Cementing

<u>Casing Size</u>	<u>Sacks</u>	<u>Type Cement and Additives</u>
<u>8-5/8"</u>	<u>850</u>	<u>Class H. Cemented w/750 sx 50/50 pozmix, w/3% added gel, 2% CaCl, 1/2# Flocele, followed by 100 sx 60/40 Pozmix, 3% CaCl, 1/4# Flocele. Cement circulated to surface.</u>
<u> </u>	<u> </u>	<u> </u>
<u> </u>	<u> </u>	<u> </u>

Perforations

<u>Formation</u>	<u>Perforated Interval and Number Shots</u>
<u> </u>	<u>N/A</u>
<u> </u>	<u> </u>
<u> </u>	<u> </u>
<u> </u>	<u> </u>

Electric Log Run. (Show type log and depths covered)

Ran Schlumberger Dual Induction Laterolog, Compensated Formation Density, Borehole Compensated Sonic w/GR & Caliper

(Fill in formation and related information on reverse side)

FORMATION, TESTING AND COMPLETION RECORD

Show Drill Stem Tests,
Well Stimulation and
Production Tests

Formation	Top	Bottom
Clay & Sand	0	465
Red Bed & Gypsum	465	1144
Sand	1144	1285
Red Bed	1285	1505
Red Bed & Anhydrite	1505	1690
Shale	1690	1990
Shale & Lime	1990	2670
Lime & Shale	2670	4475
TD		4475

Ran DST # 1 Lansing 4280-4338' (58')

RECEIVED
STATE CORPORATION COMMISSION

APR 17 1978

CONSERVATION DIVISION
Wichita, Kansas