

To: 1 020673
STATE CORPORATION COMMISSION
CONSERVATION DIVISION - PLUGGING SECTION
200 COLORADO DERBY BUILDING
WICHITA, KANSAS 67202

S-14

API NUMBER 15-119-00064-0000
Reentered 5/76

NE NE SW, SEC. 36, T. 34 S, R. 29 W X
2310 feet from S section line
2310 feet from W X section line

TECHNICIAN'S PLUGGING REPORT
Operator License # 30151
Operator: Eason Drilling Co.
Name:
Address Two W. 2nd St.
Tulsa, OK 74103

Lease Name Adams Unit Well # 1-36
County Meade 153.04
Well Total Depth 4709 feet
Conductor Pipe: Size _____ feet
Surface Casing: Size 8 5/8 feet 2460

Abandoned Oil Well _____ Gas Well X Input Well _____ SWD Well _____ D&A _____
Other well as hereinafter indicated _____

Plugging Contractor Sargent's Casing Pullers License Number 6547
Address P.O. Box 506, Liberal, KS 67901

Company to plug at: Hour: _____ Day: 3 Month: 5 Year: 19 93

Plugging proposal received from Kirby Lillard
(company name) Sargent's Casing Pullers (phone) 316-624-7455

were: 4 1/2" at 4709' w/200 sx cement, TOC 3986', PBSD 4662', Perfs at 4532-50'
1st plug pump 2 sx hulls and 20 sx cement to 4400',
2nd plug pump 50 sx cement at 2490',
3rd plug pump 50 sx cement at 1150',
4th plug pump 40 sx cement at 500', 5th plug pump 10 sx cement at 40'.

Plugging Proposal Received by Richard Lacey
(TECHNICIAN)

Plugging Operations attended by Agent?: All _____ Part X None _____
Operations Completed: Hour: 3 p.m. Day: 14 Month: 5 Year: 1993

ACTUAL PLUGGING REPORT 1st plug pumped 1 sx hulls and 20 sx cement at perfs, displaced with heavy mud,
2nd plug pumped 50 sx cement at 2500',
3rd plug pumped 50 sx cement at 1150',
4th plug pumped 40 sx cement at 500',
5th plug pumped 10 sx cement at 40-0'. All plugs displaced with mud.

Remarks: Used common cement by Sargent's. Recovered 3025' of 4 1/2" casing.
(If additional description is necessary, use BACK of this form.)

RECEIVED
STATE CORPORATION COMMISSION
MAY 19 1993
CONSERVATION DIVISION

Signed Glenn R. Barlow
(TECHNICIAN)

INVOICED
DATE 5-26-93
INV. NO. 37760
S-14

15-119-00074-000

CONSERVATION DIVISION
Wichita, Kansas

FEB 8 1993

STATE CORPORATION COMMISSION

SCHUMBERGER WELL SURVEYING CORPORATION

COUNTY _____
FIELD # _____
LOCATION _____
WELL _____
COMPANY _____

COMPANY THE CARTER OIL
CONTRACT _____
WELL ADAMS UNIT NO. 1
FIELD _____
LOCATION SEC. 16-34-29N
COUNTY HEADS NE NE NW
STATE KANSAS

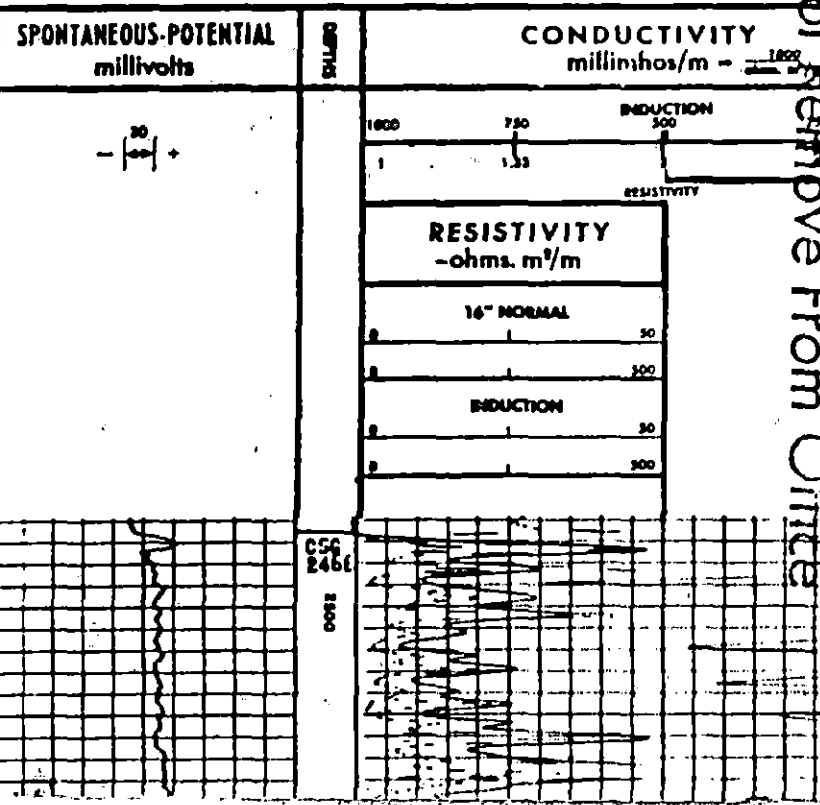
Other Surveys
M.I. _____
Location of Well _____

Division D-1-2507
K.A. 2507
W.O.L. 2511
PLANS NO. 26, 217
W.L.B. _____

Run No.	One	Two	Three	Four	Five	Six	Seven	Eight	Nine	Ten	Eleven	Twelve	Thirteen	Fourteen	Fifteen	Sixteen	Seventeen	Eighteen	Nineteen	Twenty
6105	6106	6107	6108	6109	6110	6111	6112	6113	6114	6115	6116	6117	6118	6119	6120	6121	6122	6123	6124	6125

REMARKS _____

Cartridge No. _____
Panel No. _____
Sonde No. _____



Do Not Remove From Office

"Well File"