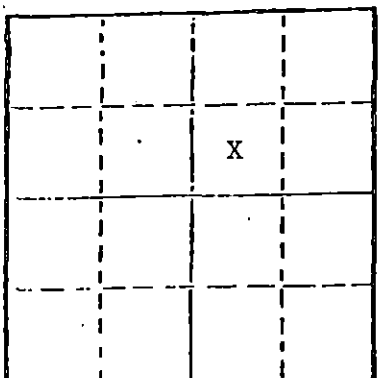


STATE OF KANSAS  
STATE CORPORATION COMMISSION

WELL PLUGGING RECORD

Give All Information Completely  
Make Required Affidavit  
Mail or Deliver Report to  
Conservation Division  
State Corporation Comm.  
245 North Water  
Wichita, KS 67202

Morton County, Sec. 13 Twp. 32S Rge. 40  
Location as "NE/CNW $\frac{1}{4}$ SW $\frac{1}{4}$ " or footage from lines  
1980' FNL x 1980 FEL  
Lease Owner Amoco Production Company  
Lease Name Fidelity Savings Gas Unit "B" Well No. 1  
Office Address P. O. Box 432 Liberal, KS 67901  
Character of Well (Completed as Oil, Gas or Dry Hole)



Gas  
Date Well completed 11-10 1960  
Application for plugging filed 11-9 1981  
Application for plugging approved 11-10 1981  
Plugging commenced 11-10 1981  
Plugging completed 11-13 1981  
Reason for abandonment of well or producing formation  
Well lost production  
If a producing well is abandoned, date of last production  
June 19 81

Was permission obtained from the Conservation Division or its agents before plugging was commenced? Yes  
Name of Conservation Agent who supervised plugging of this well Clarence Thomas  
Producing formation Morrow Depth to top 5415 Bottom 6200 Total Depth of Well 6200  
Show depth and thickness of all water, oil and gas formations.

OIL, GAS OR WATER RECORDS

CASING RECORD

FORMATION	CONTENT	FROM	TO	SIZE	PUT IN	PULLED OUT
Morrow	Gas	5415	6200	8-5/8	701	0
				4-1/2	5975	875

Describe in detail the manner in which the well was plugged, indicating where the mud fluid was placed and the method or methods used in introducing it into the hold. If cement or other plugs were used, state the character of same and depth placed, from feet to feet for each plug set.

Set CIBP at 5650' and cap with 2 sacks of cement. Shot pipe at 3830', 3224', 2444', 2018', 1742', 1294', 1114', and 875'. Set cement plug from 645' to 845'. Set bridge from 34' to 6' with 19 sacks of cement. Cut off 8-5/8" casing 5' below surface.

(If additional description is necessary, use BACK of this sheet)

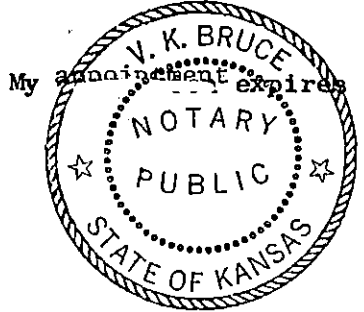
Name of Plugging Contractor Midwest Casing Pullers

STATE OF Kansas COUNTY OF Seward, ss.  
Gale McCord (employee of owner) or (owner or operator)  
of the above-described well, being first duly sworn on oath, says: That I have knowledge of the facts, statements, and matters herein contained and the log of the above-described well as filed and that the same are true and correct. So help me God.

(Signature) Gale McCord  
P. O. Box 432 Liberal, KS 67901  
(Address)

SUBSCRIBED AND SWORN TO before me this 26th day of July, 19 82

V. K. Bruce V. K. Bruce  
Notary Public.



RECEIVED  
STATE CORPORATION COMMISSION

JUL 28 1982

CONSERVATION DIVISION  
Wichita, Kansas

**KANSAS DRILLERS LOG**

S. 13 T. 32S R. 40 W  
 Loc. 1980' FNL & 1980 FEL  
 County Morton

API No. 15 — N/A —                       
 County                      Number                     

Operator Amoco Production Company

Address P. O. Box 432 Liberal, KS 67901

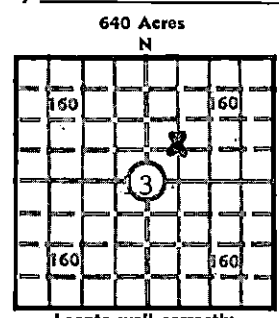
Well No. 1 Lease Name Fidelity Savings "B"

Footage Location 1980 feet from (N) line 1980 feet from (E) line

Principal Contractor                      Geologist                     

Spud Date 10-16-60 Total Depth 6200 P.B.T.D. 5916

Date Completed 12-8-60 Oil Purchaser                     



640 Acres  
N  
Locate well correctly  
Elev.: Gr. 3293  
DF 3299 KB 3301

**CASING RECORD**

Report of all strings set— surface, intermediate, production, etc.

Purpose of string	Size hole drilled	Size casing set (in O.D.)	Weight lbs/ft.	Setting depth	Type cement	Sacks	Type and percent additives
Surface		8-5/8	24#	701	Pozmix	450	Unknown
Production		4-1/2	9-1/2#	5950	Pozmix	250	Unknown

**LINER RECORD**

**PERFORATION RECORD**

Top, ft.	Bottom, ft.	Sacks cement	Shots per ft.	Size & type	Depth interval
			8	JET	5688-90, 5696-98, 5780-82, 5796-98 5814-16, 5844-46

Size	Setting depth	Packer set at
2-3/8	5786	

**ACID, FRACTURE, SHOT, CEMENT SQUEEZE RECORD**

Amount and kind of material used	Depth interval treated
Acidize w/500 gal 15%. Frac w/30,000 gal treated wtr & 21,000# sand in 3 stages w/20 ball sealers between each stage.	5780-5846
Acidize w/500 gal 15%. Frac w/16,000 gal trt wtr & 12,000# sand in two stages w/20 ball sealers between each stage.	5688-5900

**INITIAL PRODUCTION**

Date of first production                      Producing method (flowing, pumping, gas lift, etc.) Well PXA

RATE OF PRODUCTION PER 24 HOURS	Oil	Gas	Water	Gas:oil ratio
	bbls.	bbls.	MCF	bbls.

Disposition of gas (vented, used on lease or sold)                      Producing interval (s)                     

STATE RECEIVED  
 NGW 12 1961  
 CONSERVATION DIVISION  
 WICHITA, KANSAS  
 CFPB

INSTRUCTIONS: As provided in KCC Rule 82-2-125, within 90 days after completion of a well, one completed copy of this Drillers Log shall be transmitted to the State Geological Survey of Kansas, 4150 Monroe Street, Wichita, Kansas 67209. Copies of this form are available from the Conservation Division, State Corporation Commission, 3830 So. Meridian (P.O. Box 17027), Wichita, Kansas 66217. Phone AC 316-522-2206. If confidential custody is desired, please note Rule 82-2-125. Drillers Logs will be on open file in the Oil and Gas Division, State Geological Survey of Kansas, Lawrence, Kansas 66044.

Operator Amoco Production Company DESIGNATE TYPE OF COMP.: OIL, GAS, DRY HOLE, SWDW, ETC.:

Well No. 1 Lease Name Fidelity Savings "B" PXA - Gas


S. 13 T. 32 S. R. 40 W

**WELL LOG**

Show all important zones of porosity and contents thereof; cored intervals, and all drill-stem tests, including depth interval tested, cushion used, time-tool open, flowing and shut-in pressures, and recoveries. SHOW GEOLOGICAL MARKERS, LOGS RUN, OR OTHER DESCRIPTIVE INFORMATION.

FORMATION DESCRIPTION, CONTENTS, ETC.	TOP	BOTTOM	NAME	DEPTH
Sand, Clay	0	440		
RedBed, Shale	440	705		
RedBed, Anhydrite	705	1270		
Sand	1270	1450		
RedBed, Anhydrite	1450	1982		
Lime, Shale	1982	3998		
Lime	3998	4080		
Lime, Shale	4080	4212		
Sandy Lime	4212	4343		
Lime, Shale	4313	4792		
Lime	4792	4877		
Lime, Shale	4877	4918		
Lime	4918	4980		
Shale	4980	5015		
Lime, Shale	5015	5411		
Shale	5411	5451		
Lime, Shale	5451	5865		
Lime	5865	5955		
Lime, Chert	5955	5981		
Lime	5981	6200		
		6200	TD	
		5916	PBD	

USE ADDITIONAL SHEETS, IF NECESSARY, TO COMPLETE WELL RECORD.

Date Received		 R. C. CARLSON Signature Admn. Supv. Title 11-9-81 Date
---------------	--	---

11-9-81